



 JURALCO

**JURALCO LOUVRELITE<sup>®</sup>**  
**GABLE SUN SHADE**

ISSUE 11-22 v1

# Juralco Louvrelite® Gable Sun Shade - Specifications, Powder Coating

## Juralco Aluminium Building Products Ltd (JABP)

### Specifications for Juralco Louvrelite® Gable Sun Shade

#### 1. Scope

- This specification details the documents the Juralco Louvrelite® Gable Sun Shade refers to in relation to the New Zealand Building Code, the manufacturer's documents, products used in the System, requirements in relation to fixing and surface finishings.

#### 2. NZBC Compliance

- The Juralco Louvrelite® Gable Sun Shade has been reviewed by Lautrec Technology Group Ltd to demonstrate compliance with the structural requirements of the New Zealand Building Code and AS/NZS 1170 : 2002 occupancy A, A Other and C3, NZS 3604 Low, Medium, High and Very High Wind Zones
- The Structural Engineering design includes the requirements of B1 Structure, B2 Durability, F2 Hazardous material all from the Building Code.
- Verification Method B1 / VM1, B2/AS1.
- Complies with NZS 4223.3.2016

#### 3. Manufacturer's Documents

- The Juralco Louvrelite® Gable Sun Shade manual details all extrusions and components used for the fabrication and installation/fixing of the system.
- A Producer Statement 1(Design) is available.  
Copies of the above documents are available from:  
Juralco Aluminium Building Products Ltd  
48 Bruce McLaren Rd, Henderson, Auckland  
Phone 09 478 8018 Fax 09 478 7883 Email specify@juralco.co.nz
- Any deviation from the standard fabrication or installation/fixing must be accompanied by a site specific PS1 with site specific calculations and drawings

#### 4. Products

- Only extrusions, components and hardware supplied by or specified by JABP may be used in the Juralco Louvrelite® Gable Sun Shade
- Aluminium extrusions, components and hardware – unless specified are manufactured to 6060 T5 specifications
- Stainless Steel components, hardware, fixings – all components to 316 grade

#### 5. Surface Finishing

- Juralco Aluminium Building Products Ltd is a Dulux Registered Applicator site, registration number 2101.  
JABP uses only Dulux branded powder coating materials
- Unless specified otherwise, Dulux Duralloy® powder coating systems are used for properties greater than 100 metres from high tide level where AAMA 2603 performance is required
- Dulux Duratec® powder coating systems must be used for all properties greater than 10 metres and up to 100 metres from high tide level where AAMA 2604 performance is required
- Dulux Duralloy® has a 10 year film and colour integrity warranty, Dulux Duratec® has a 20 year film and colour integrity warranty

#### 6. Installation and Fixing

- The Juralco Louvrelite® Gable Sun Shade must only be installed in accordance with its Manual
- Any deviation from that specified in the Juralco Louvrelite® Gable Sun Shade manual must only be in accordance with the site specific PS1 with site specific calculations and drawings listing the non standard details
- The Juralco Louvrelite® Gable Sun Shade must only be fabricated/installed by a Juralco approved fabricator
- Upon completion of the installation the fabricator must supply the owner with a PS3 (Construction)

#### **Important instructions for Powder Coatings near Salt Water**

The standard Dulux powder coating system used by Juralco is Duralloy® and is suitable for installations greater than 100 metres from high tide level and for buildings up to 3 stories above ground. Use Duratec® for installations between 10 and 100 metres from high tide level and for prestigious residential and commercial developments. For all other applications contact Juralco for alternative systems.

Note - Powder coated prices listed in Juralco price books are for the standard Duralloy® system. If the Duratec® system is required it must be specified upon placement of the order and will incur a surcharge – Duratec® prices on application.

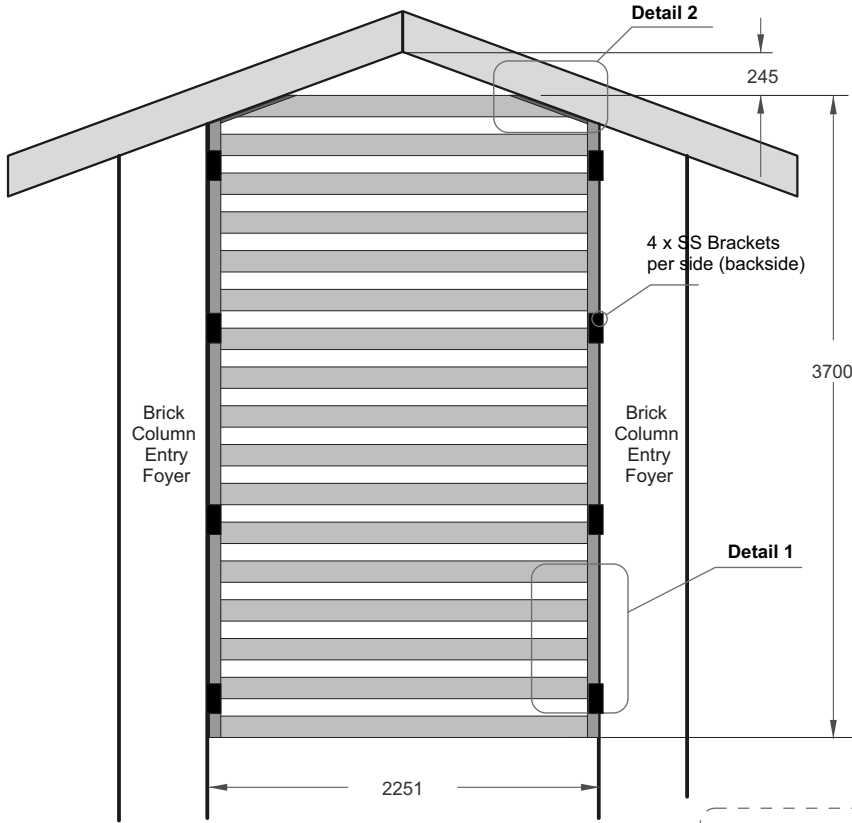
#### **Important instructions for Powder Coating - Attachment to structures**

An EPDM or similar material spacer must be used to separate powder coated aluminium items from all timber, concrete and steel structures. Failure to do so can lead to the chemicals in the structure affecting the powder coating layer on the aluminium.

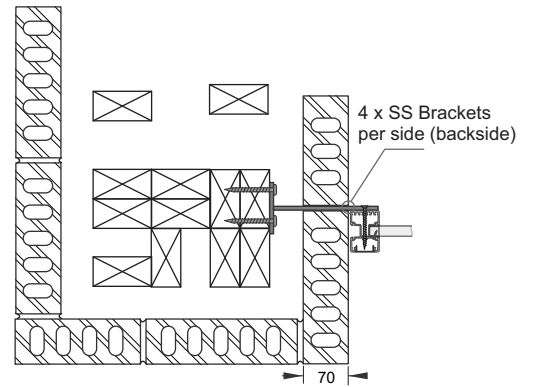
#### **Powder Coating Warranty**

The Dulux powder coating warranty period is conditional upon being maintained in accordance with the Dulux 'Care and Maintenance Instructions'. Contact your installer for a copy (or download from Dulux) of the Care and Maintenance instructions or refer to the back page of this manual.

Juralco Louvrelite® Gable Sun Shade - Typical Construction Details



**Entry Foyer Sunshade  
Brick Columns**

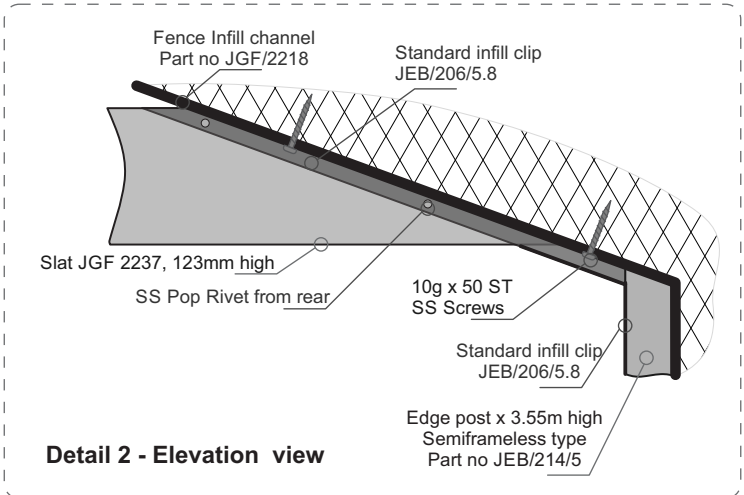


**Brick Columns. Entry Foyer**

Sun Shade: JFG 2237 123mm wide Slats with 100mm gaps. 16 x Full width, 1 x Angled

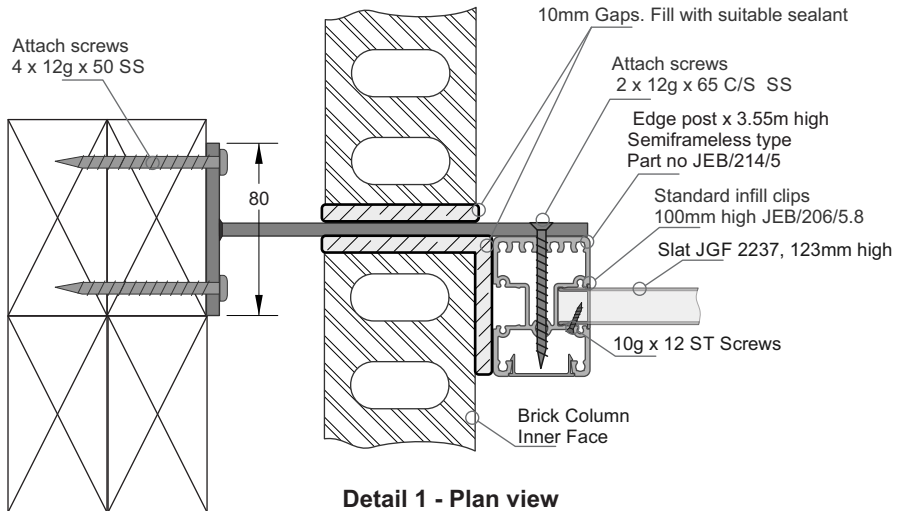
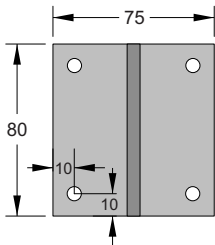
- 1 - Design of connections through Wall to resist external moisture ingress - by others
- 2 - Design is based on Columns being able to resist imposed Wind loads.

**Sun Shade - Entry Foyer.**



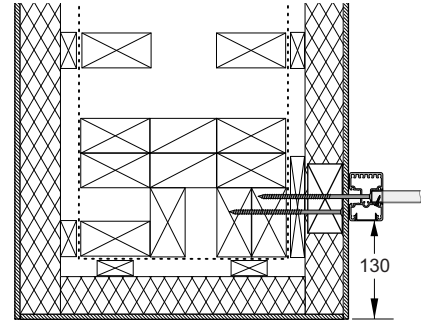
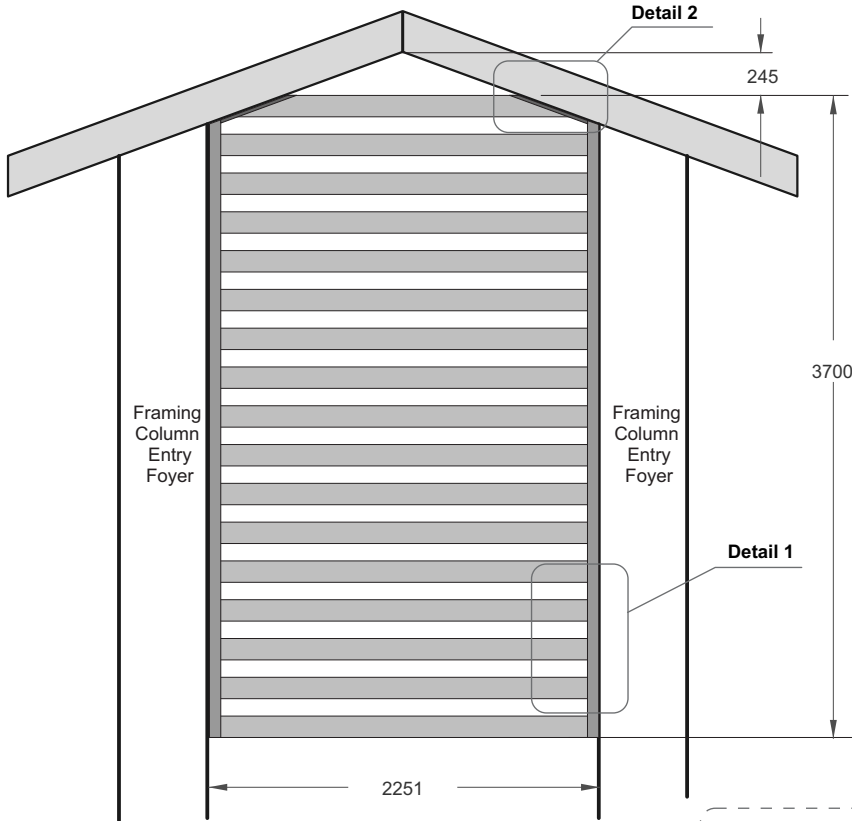
**Detail 2 - Elevation view**

4 off SS Baseplates, ex 75mm x 6mm Flat SS Bar Base, 1 x 80 long, 4 x 6dia hole for attach screws  
Web, 1 x approx 165 long (confirm on site)  
2 x 6dia C/s holes to suit SS Screws



**Detail 1 - Plan view**

**Entry Foyer Sun Shade Framing + Cladding**

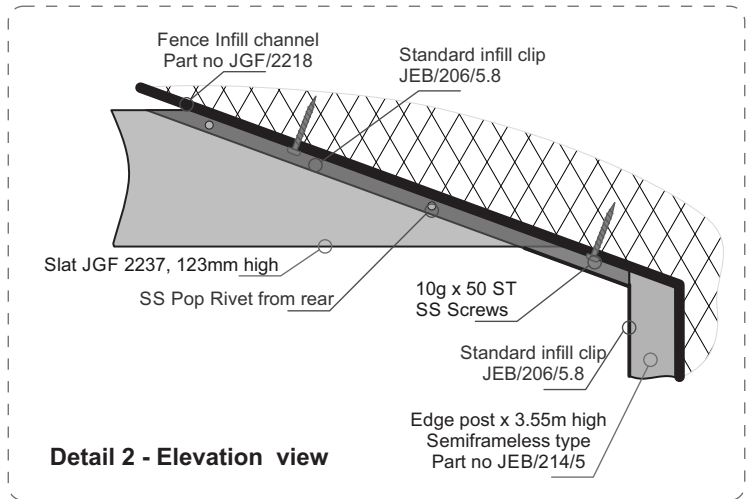


**Framing + Cladding. Entry Foyer**

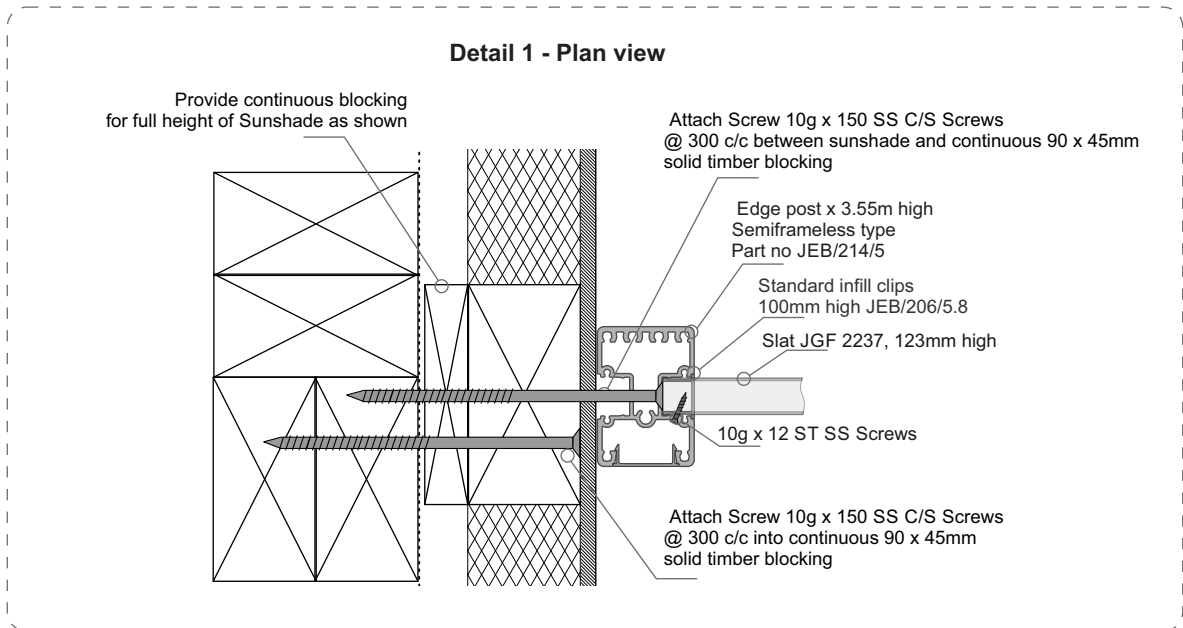
Sun Shade: JGF 2237 123mm wide Slats with 100mm gaps. 16 x Full width, 1 x Angled

- 1 - Design of connections through Wall to resist external moisture ingress - by others
- 2 - Design is based on Columns being able to resist imposed Wind loads.

**Sun Shade - Entry Foyer.**

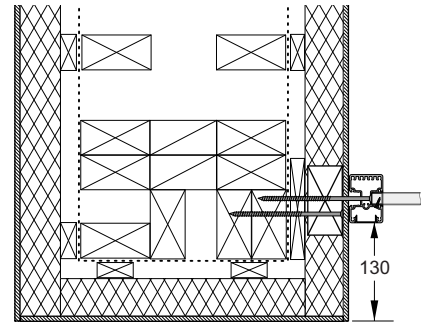
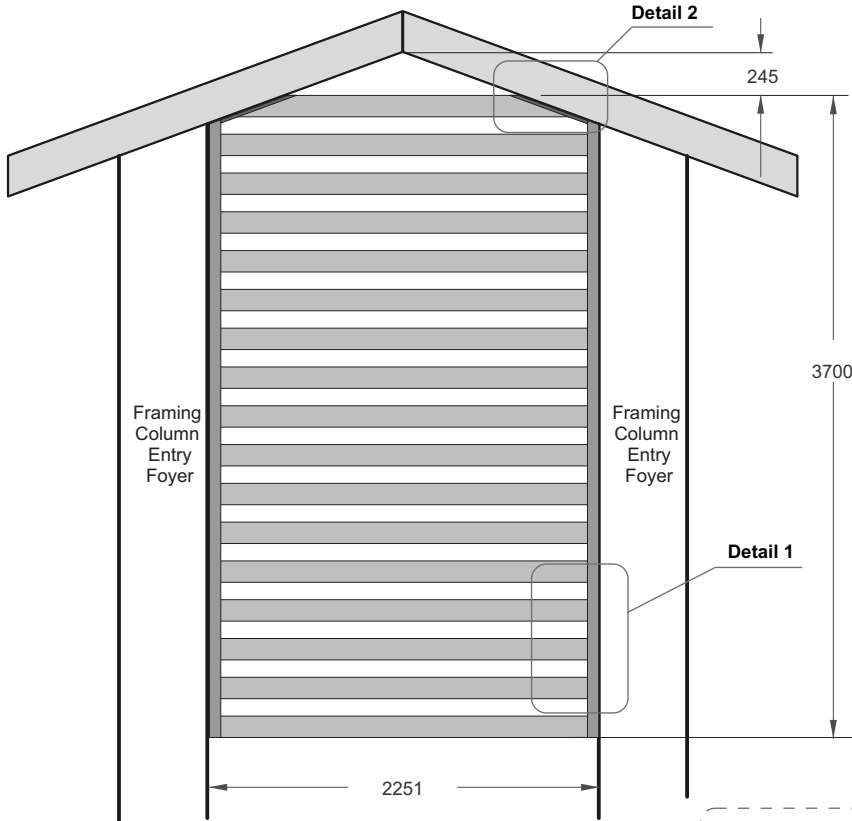


**Detail 2 - Elevation view**



**Detail 1 - Plan view**

**Entry Foyer Sun Shade  
Framing + Rockcote Plaster**

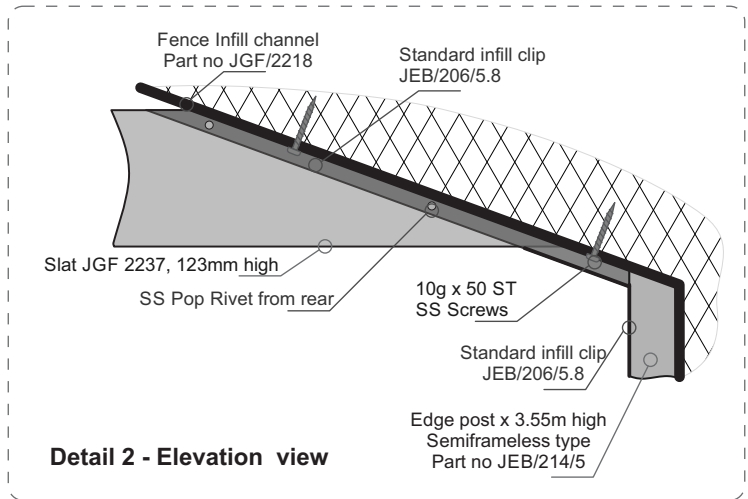


**Framing + Rockcote Cladding.  
Entry Foyer**

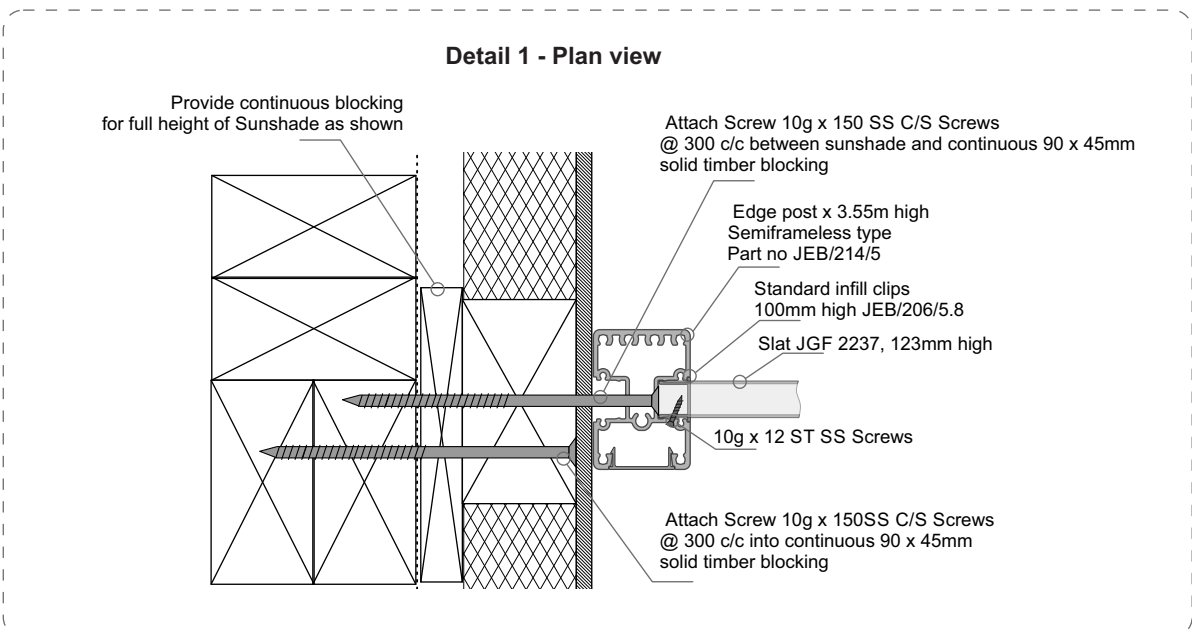
Sun Shade: JGF 2237 123mm wide Slats with 100mm gaps. 16 x Full width, 1 x Angled

- 1 - Design of connections through Wall to resist external moisture ingress - by others
- 2 - Design is based on Columns being able to resist imposed Wind loads.

**Sun Shade - Entry Foyer.**



**Detail 2 - Elevation view**



**Detail 1 - Plan view**

Provide continuous blocking for full height of Sunshade as shown

Attach Screw 10g x 150 SS C/S Screws @ 300 c/c between sunshade and continuous 90 x 45mm solid timber blocking

Edge post x 3.55m high Semiframeless type Part no JEB/214/5

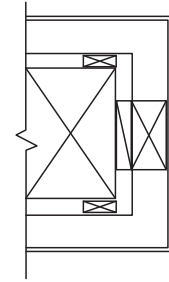
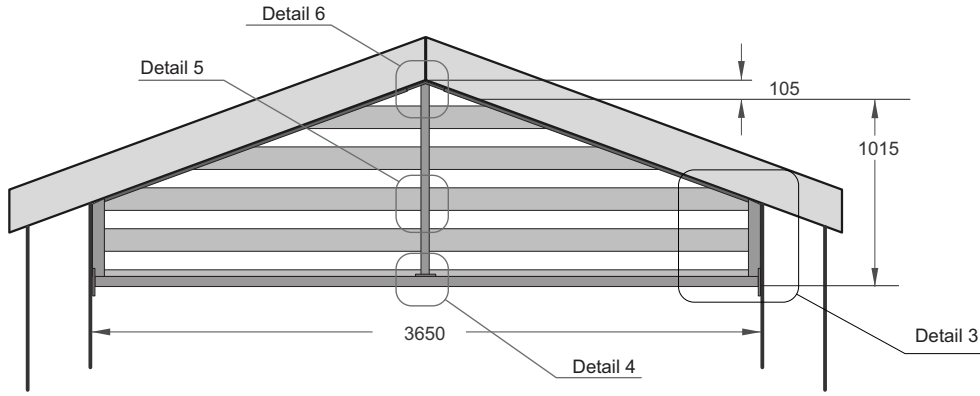
Standard infill clips 100mm high JEB/206/5.8

Slat JGF 2237, 123mm high

10g x 12 ST SS Screws

Attach Screw 10g x 150SS C/S Screws @ 300 c/c into continuous 90 x 45mm solid timber blocking

**Juralco Louvrelite® Gable Sun Shade - Typical Construction Details**

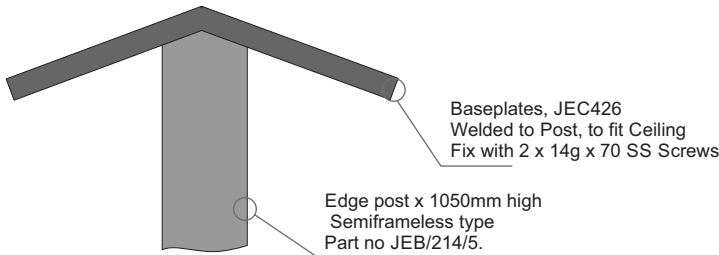


**Columns - Balcony**

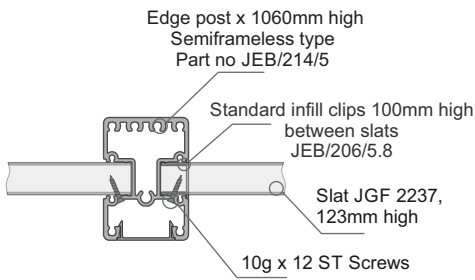
Sun Shade: JFG 2237 123mm wide Slats with 100mm gaps. 2 x Full width, 3 x Angled

- 1 - Design of connections through Wall to resist external moisture ingress - by others
- 2 - Design is based on Columns being able to resist imposed Wind loads.

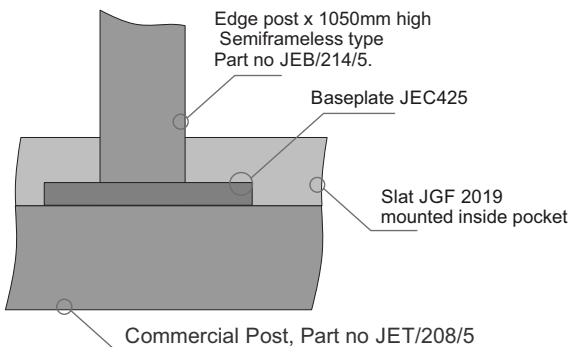
**Sun Shade - Balcony.**



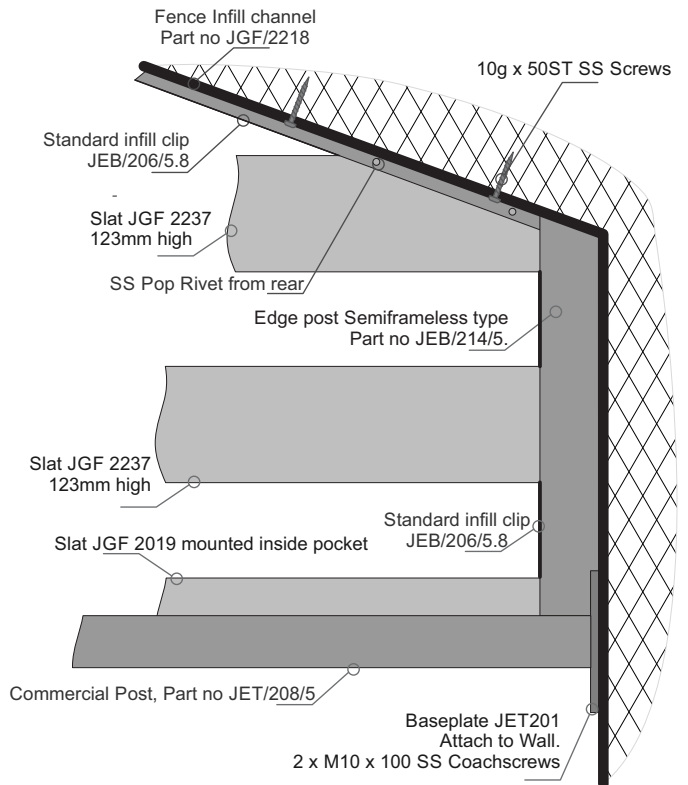
**Detail 6 - Elevation view**



**Detail 5 - Plan view**

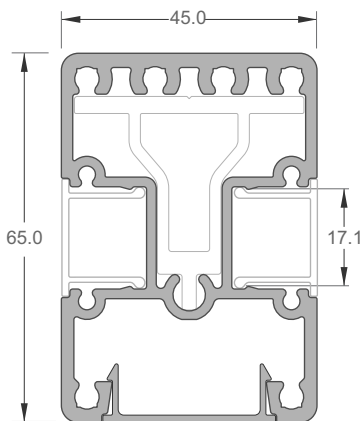


**Detail 4 - Elevation view**

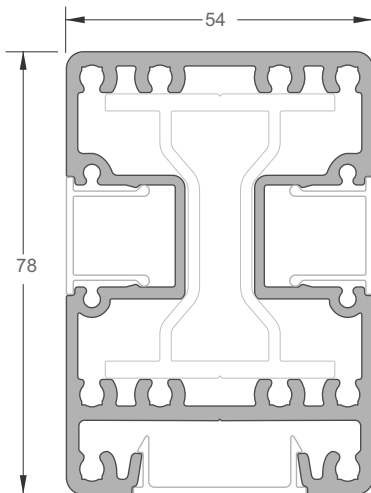


**Detail 3 - Elevation view**

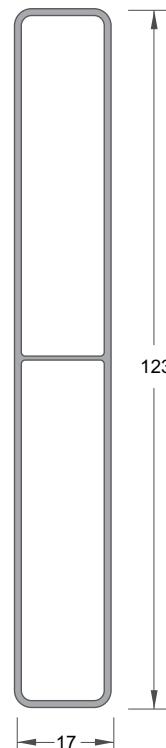
Juralco Louvrelite® Gable Sun Shade - Extrusions, Components



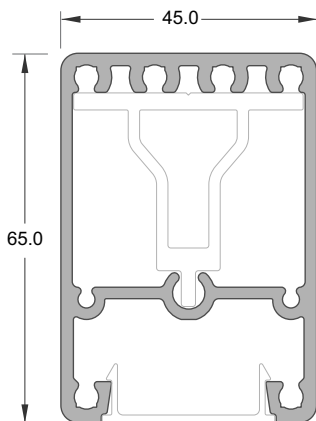
FACE FIX EDGE POST  
SEMIFRAMELESS  
Part No JEB/214/5



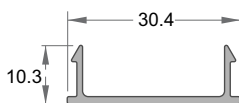
POST  
Part No JET/208/5



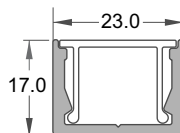
INFILL  
LIGHT 123mm SLAT  
Part No JGF 2237



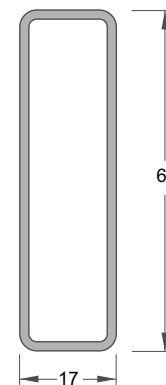
FACE FIX EDGE POST  
Part No JEB/208/5



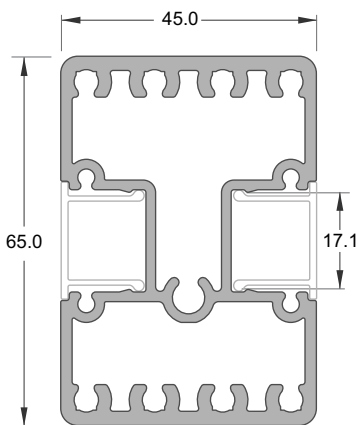
FACE FIX INFILL CLIP  
Part No JEB/203/5



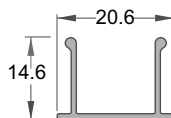
FENCE INFILL CHANNEL  
Part No JGF/2218



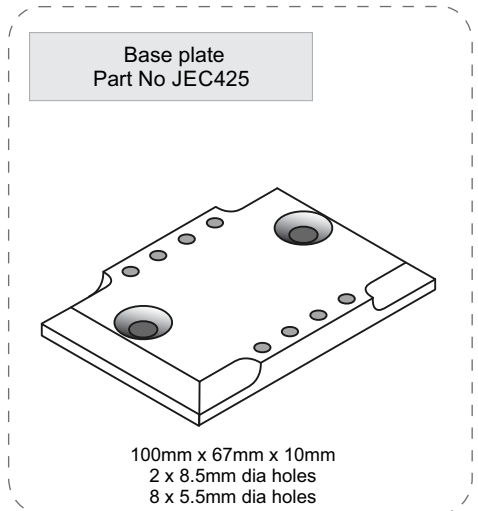
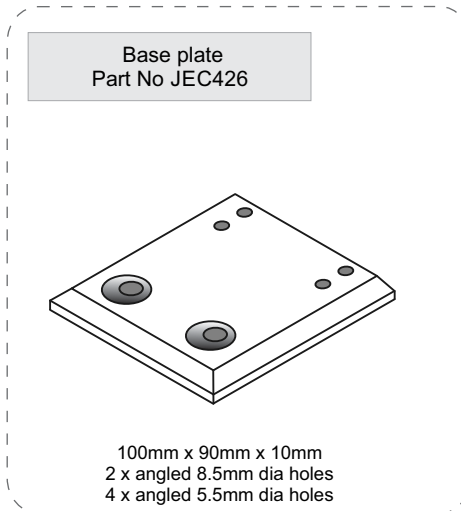
INFILL  
LIGHT 60mm SLAT  
Part No JGF 2019



TOP FIX EDGE POST  
SEMIFRAMELESS  
Part No JEB/212/5



STANDARD INFILL CLIP  
Part No JEB/206/5.8



## Powder Coating Installation Care

### Warning re use of solvents:

- In some cases strong solvents are recommended for thinning various types of paints and also for cleaning up mastics and sealants.
- These can be harmful to the extended life of the powder coated surface, and must not be used for cleaning purposes.
- It is important to note that the damage will not be visible immediately and may take up to 12 months to develop.

If paint splashes or sealants and mastics need to be removed then the following may be safely used:  
Methylated Spirits, Ethyl Alcohol, Isopropanol or preferably a mild detergent in warm water.

### Joinery Protection during Installation:

All the activity on a construction site means that your powder coated items may get knocked or scratched, splattered with mortar, plaster, textured coating or paint during the later stages of construction.

Please ensure that all powder coated articles are masked or covered at this time. It is far easier to prevent accidents than to try and correct them. Should your joinery receive mortar or paint splashes see that these are removed before cure and follow the instructions contained in this brochure.

Typical sticker used to warn other trades of the need to protect and mask off powder coated joinery (applies to anodised joinery also)

**"IMPORTANT ALL TRADES"**  
This valuable aluminium joinery will suffer permanent damage from: plaster, mortar and paint splashes - Protect if splashes occur - Immediately wash down joinery with water or meths - Do not allow splashes to harden! ~ Do not use solvents! - Do not remove this label until final clean completed.

This photograph displays damage that has occurred on site, post installation. The photo of the masked joinery displays clear signs of damage that could have occurred were it not masked. Please ensure that your joinery is protected right through the entire construction process.



## Powder Coating Maintenance

### External - Maintenance Program:

To extend the life of external powder coated articles and to comply with warranty requirements for powder coated aluminium joinery, a simple, regular maintenance program must be implemented.

The effects of ultra violet light, atmospheric pollution, dirt, grime and airborne salt deposits will all accumulate over time and must be removed or surface staining and weathering will occur, leading to an unsightly appearance.

For external coatings, cleaning should take place every six months. In areas where pollutants are more prevalent, such as beachfront houses and industrial or geothermal areas, then a cleaning program should be carried out on a more frequent basis ie. every one to three months.

Fences or Balustrades in close proximity to swimming pools must be washed down every six months, to clean off chlorine and salt deposits.

### Cleaning your powder coating:

1. Carefully remove any loose surface deposits with a wet sponge.
2. Use a soft brush (non abrasive) and a mild household detergent (do not use solvents) in warm water, remove dust, salt and other deposits.
3. Rinse off with clean fresh water.

### Restoring weathered or scratched surfaces:

Repair of Scuffed or Scratched surfaces  
Dulux Spray Cans are available in all colour card colours.

Repair of Small Scratches or Chips.  
Dulux Dabsticks are ideally suited for the repair of small scratches.  
Dabsticks may not be available in all colour card colours.

Repair of Weathered areas .  
Dulux Gloss Up is a light to medium cutting cream ideally suited for gloss restoration and has been specifically designed for this purpose.  
Gloss Up contains no waxes or silicone and is a one step system.



Contact Dulux Powder Coatings , ph 0064 9 441 8244

All pages© Copyright Juralco Aluminium Building Products Ltd, 2022