



 JURALCO

JURALCO TRIDENT SHOWER DOOR SYSTEM

ISSUE 1/17

Juralco Aluminium Building Products Ltd designs and distributes specialist aluminium joinery systems through a national network of franchised fabricators and agents.

For more than 25 years we have been at the forefront of specialist aluminium door and window products suitable for New Zealand joinery and building methods.

Our wide product range includes security and insect screens, balustrades and gates, shutters and awnings, shower screens, wardrobe doors and organisers and internal doors.

The Juralco Trident Shower Door System is ideal for any bathroom. Doors slide easily from top hung tracks. The design can cope with installations on floor, on shower trays or over baths.

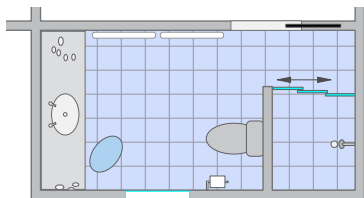
Doors can be framed, or frameless for a more contemporary styling. The Shower doors are custom made to your specifications, as a three door system for small spaces or a two door for larger units. Its space saving layout optimizes the room available while maintaining a generous entry width.

The stacking Doors can be set up as right or left hand opening.

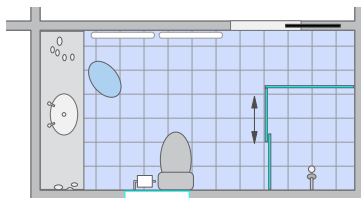
This Guide is intended for use by Architects, Specifiers and Fabricators
 Pages 2-3 cover areas of general interest. Pages 4 onwards are intended for Fabricators

Typical Layouts

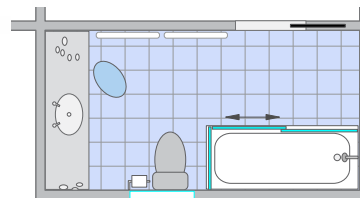
Shown below are some layout possibilities for the Trident Shower Door System - see next page for fuller explanations



Juralco Trident Shower Door System
 For Shower Tray or direct on Floor
 Shown, 3 door, between walls
 2 x Sliding, 1 x Fixed

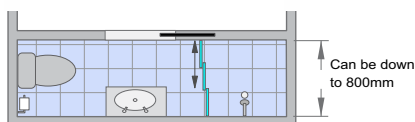


Juralco Trident Shower Door System
 For Shower Tray or direct on Floor
 Shown, 2 door and 90deg return
 2 x Sliding, 1 x Fixed Return

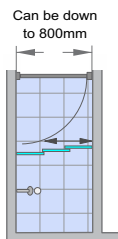


Juralco Trident Shower Door System
 For Over bath
 Shown, 2 door and 90deg return
 2 x Sliding, 1 x Fixed Return

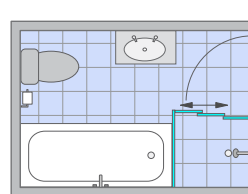
Typical Applications



Trident 3 x Door
 in a typical compact en-suite



Trident 3 x Door
 in a typical older house



Trident 3 x Door
 behind Bathroom door

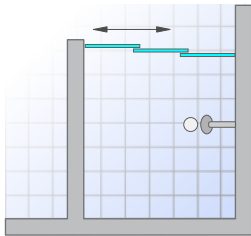
Juralco Trident Shower Door System

General Description

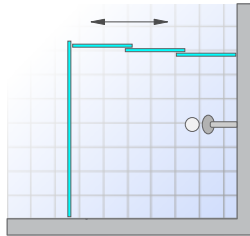
- The Trident Shower Door system is designed to provide a range of easily installed doors to suit any opening.
- Designed for installation with standard Shower trays, direct on to suitable flooring or over bath.
- There are two sliding door configurations. Three door for compact situations and Two door for wider doors.
- For compact situations, shower openings as small as 750mm wide can be accommodated with the three door system.
- Minimizes water dripping to floor.
- Doors normally supplied as frameless (no stiles), but available as framed (including Stiles) .
- All doors are constructed from our propriety range of aluminium extrusions.
- Framed Doors, Fixed Panels and Returns are 4mm toughened glass, while Frameless Doors and Fixed Panels are 6mm toughened glass, both to NZS 4233 Part 3 for human impact requirements
- Infill panels are Glass, either Clear, Frosted or Patterned.
- Easy Door adjustments on site.
- Extrusion frames available in White or Anodised polished bright or natural .
- All doors and returns are custom made to your specifications
- For Shower tray or Floor mounting the standard heights are 1830mm and 1930mm respectively.

Typical Layouts

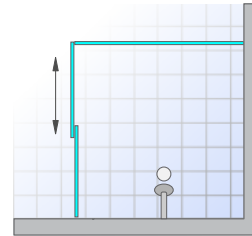
- For best results the Shower Rose should not point directly at the sliding doors.



Three Door - 2 x sliding, 1 x fixed

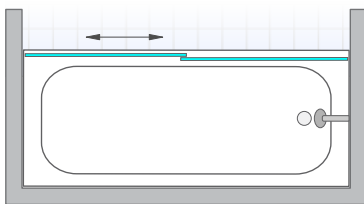


Three Door - 2 x sliding, 1 x fixed and 90deg return

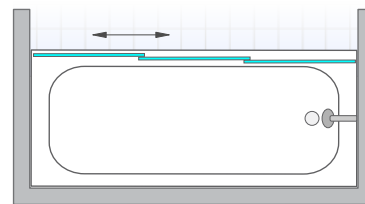


Two Door - 2 x sliding and 90deg return

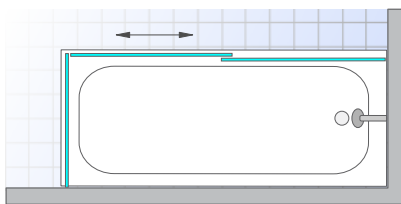
Juralco Trident Shower Door System For Shower Tray or direct on Floor



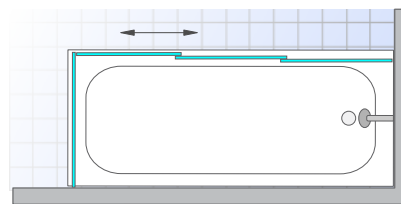
Two Door - Both Sliding
or 1 x Sliding, 1 x Fixed



Three Door - 2 x sliding, 1 x fixed



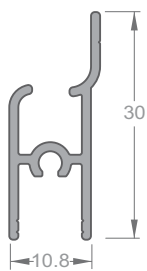
Two Door - Both Sliding
or 1 x Sliding, 1 x Fixed
and a 90deg return



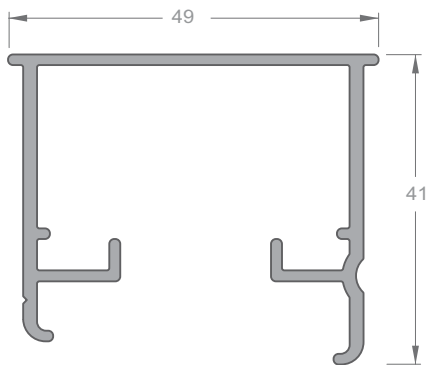
Three Door - 2 x sliding, 1 x fixed
and a 90deg return

Juralco Trident Shower Door System For Over bath

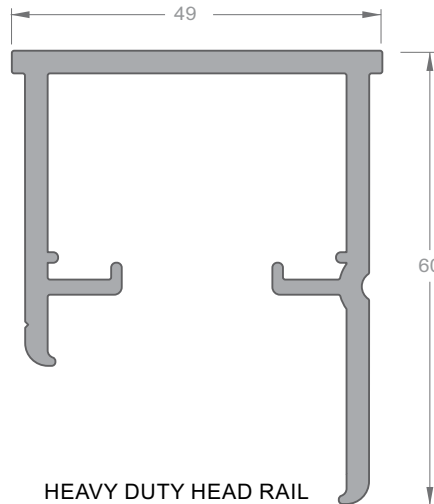
Juralco Trident Shower Door System - Extrusions



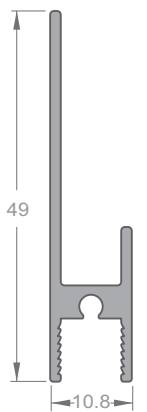
**FRONT RAIL
FIXED PANEL**
Part No 3844



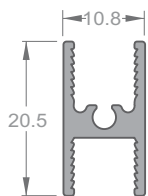
HEAD RAIL
Part No 3836



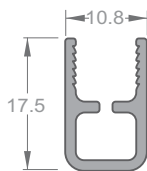
HEAVY DUTY HEAD RAIL
Part No 3842



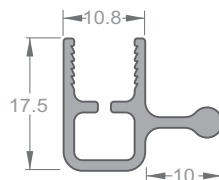
TOP RAIL
Part No 3833



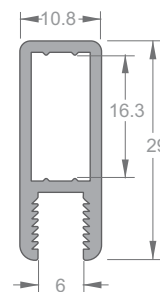
BOTTOM RAIL
Part No 3832



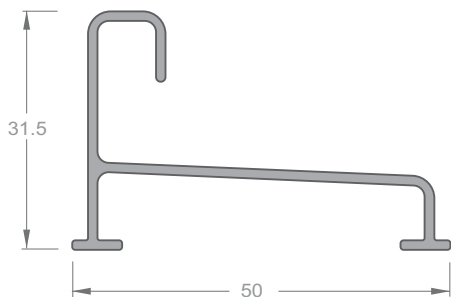
STILE
Part No 3831



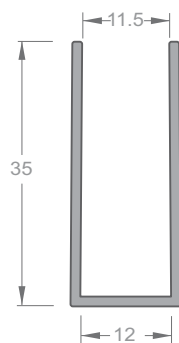
HANDLE STILE
Part No 3834



RETURN FRAME
Part No 6679



SILL
Part No 3835



MAXI CHANNEL
Part No 3838



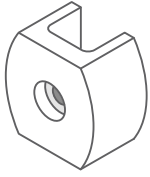
JAMB
Part No 3830



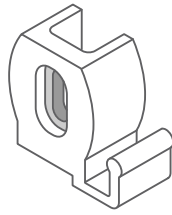
90 deg RETURN JAMB
Part No 3837

Juralco Trident Shower Door System - Components

Pickup Block
Part No SU 10



Hook
(Shown LH)

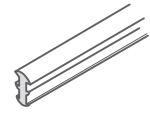


LH - Part No SU 12
RH - Part No SU 13

Peg (or Stop Block)
Part No SU 11

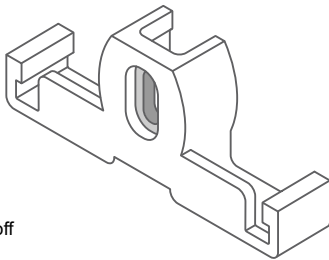


Glazing Wedge, clear
Part No 31



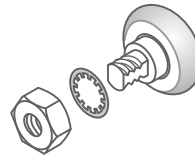
60mt reels

Double Hook
Part No SU 14



One hook to be cut off
depending on hand.

Shower Wheel



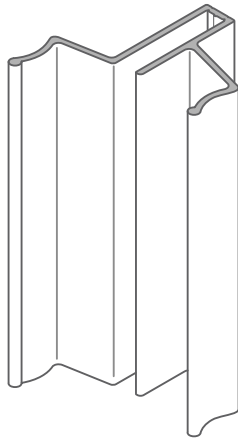
Wheel - Part No 69
Washer - Part No 70
Nut - Part No 71

Fasteners



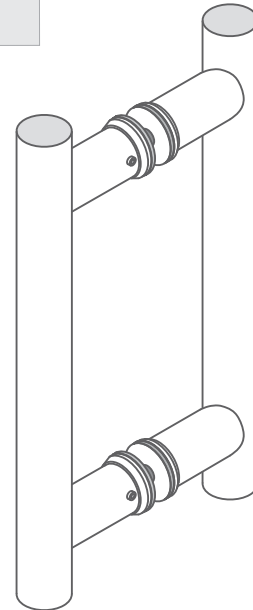
Frame/ Corners - Pop 73AS44
Door Corners - 6 x 25 Pan
Peg attach - 6 x 25 C/S

Door Handle
Part No 96



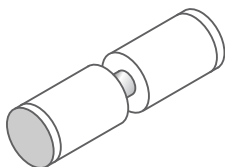
Optional for Frameless Glass

Door Handle
Part No 77



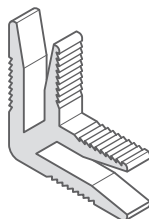
Standard for Frameless Glass

Knob Set
Part No KN 306



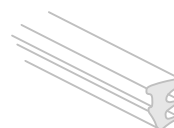
Optional for Frameless Glass

Corner Stake
Part No 04



For 6679 Return

Glazing Wedge
Part No H/22/100/CLE



Clear Glazing Wedge

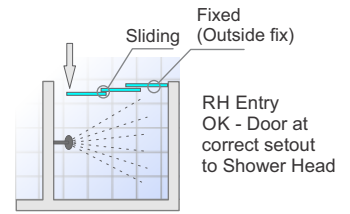
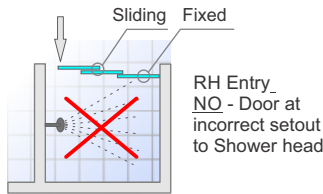
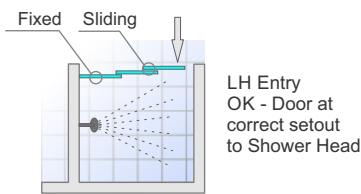
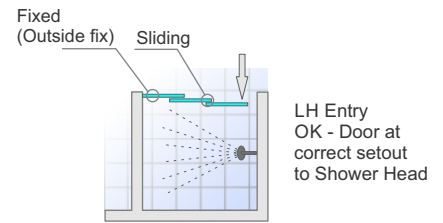
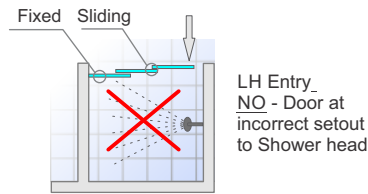
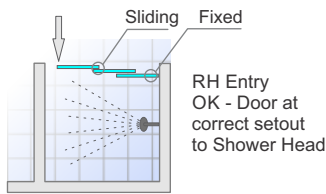
Juralco Trident Shower Door System - Typical Cross Sections

Trident Door Shower System Door Measuring

- Measure width at top and bottom of the shower Door Frame. Check for out of square walls. Frames must be built out of square if (if more than 5mm out) necessary to reflect actual site measurements.
- Double check all measurements.
- Check position of shower head and entry point for correct door set out.
- For shower enclosures with return panels establish points at corners where outside line of screen will finish (approx 10mm in from edge of Tray) Measure to these points. Small samples of corner sections are useful to assist in determining where shower enclosure is to finish.
- Decide on your fitting allowances to give Door Frame Width and Height, then use the appropriate Cutting formula sheets.
- Heights normally 1830mm for Shower tray or 1930mm for level floor installations.

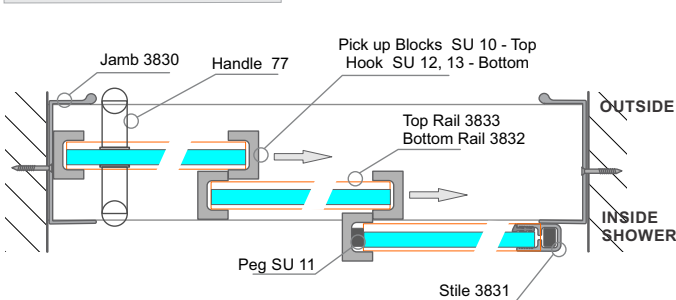
Trident Door Shower System Door Set Out

- Notes on Door set out, Shower head and Entry side. (Fixed Panel is normally to Inside)
- Same applies to all Two Door systems
- Shower rose not to point at Door.

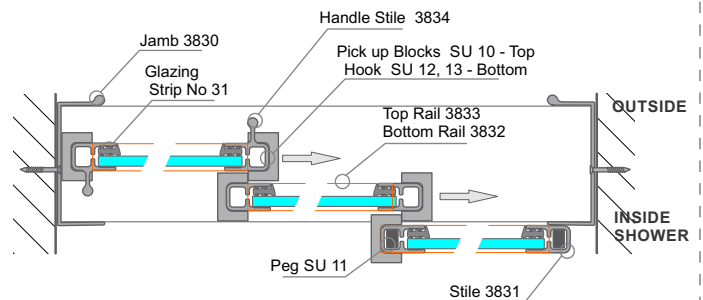


Three Door Typical Horizontal Cross Sections

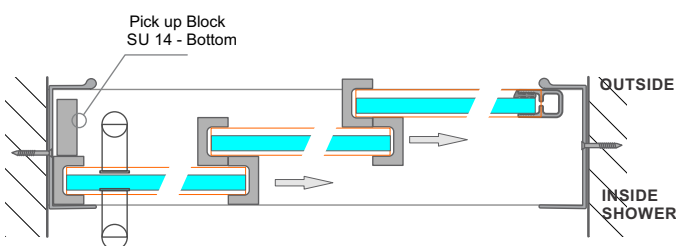
- Available as Framed or Framless Doors (no stiles)
- Fixed Panel can either be Outside or Inside mounted
- All available with 90 deg return



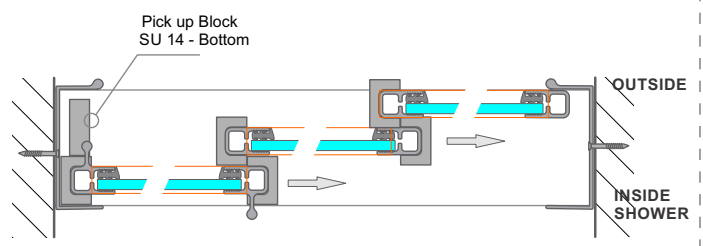
Frameless, Back mounted Fixed Panel
Three Door - 2 x sliding, 1 x fixed, 6mm Glass



Framed, Back mounted Fixed Panel
Three Door - 2 x sliding, 1 x fixed, 4mm Glass



Frameless, Front mounted Fixed Panel
Three Door - 2 x sliding, 1 x fixed, 6mm Glass

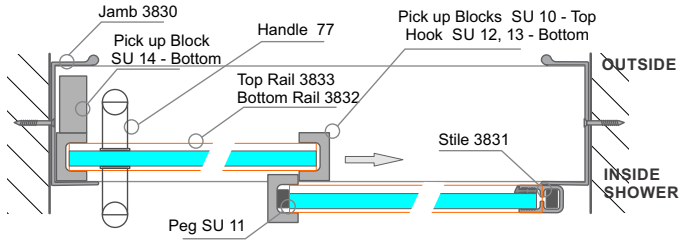


Framed, Front mounted Fixed Panel
Three Door - 2 x sliding, 1 x fixed, 4mm Glass

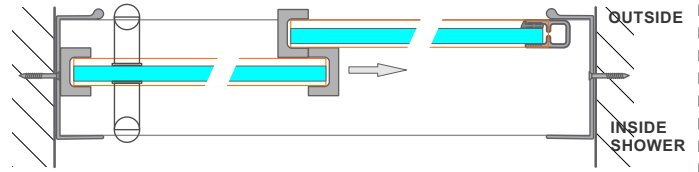
Juralco Trident Shower Door System - Typical Cross Sections

Two Door Typical Horizontal Cross Sections

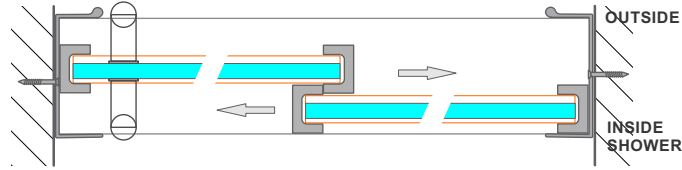
- Available as Framed or Frameless Doors (no stiles)
- Fixed Panel can either be Outside or Inside mounted
- All available with 90 deg return



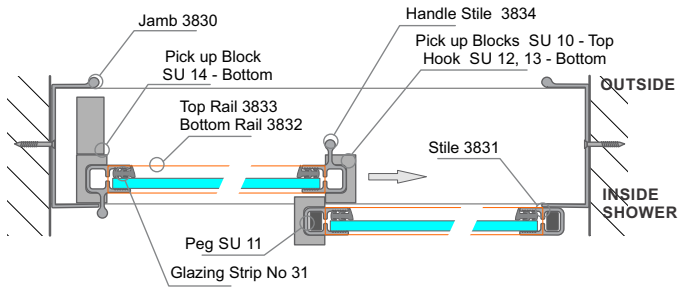
Frameless, Back mounted Fixed Panel
Two Door - 2 x sliding, 1 x fixed, 6mm Glass



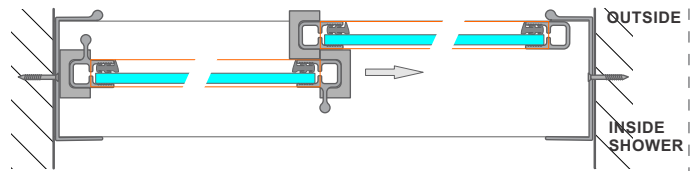
Frameless, Front mounted Fixed Panel
Two Door - 2 x sliding, 1 x fixed, 6mm Glass



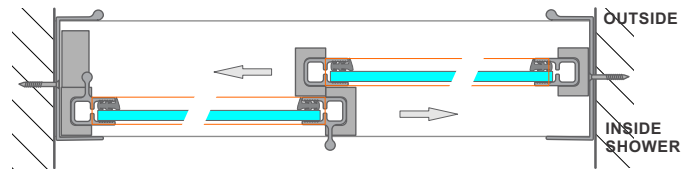
Frameless, Two Door - Both sliding, 6mm Glass



Framed, Back mounted Fixed Panel
Two Door - 2 x sliding, 1 x fixed, 4mm Glass

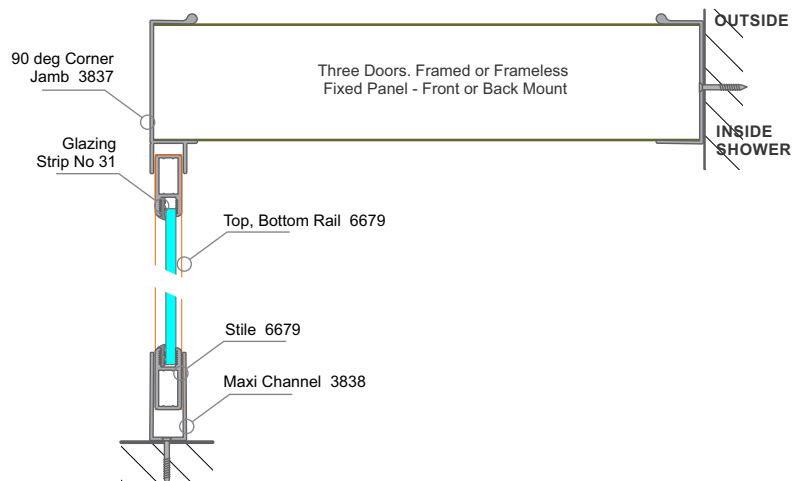


Framed, Front mounted Fixed Panel
Two Door - 2 x sliding, 1 x fixed, 4mm Glass



Framed, Two Door - Both sliding, 4mm Glass

Return Typical Horizontal Cross Sections



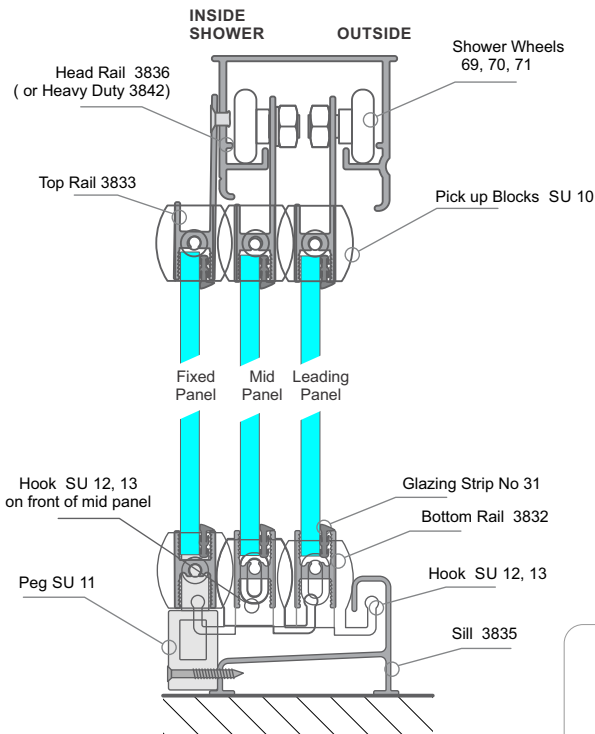
Return Panel, framed, 4mm Glass



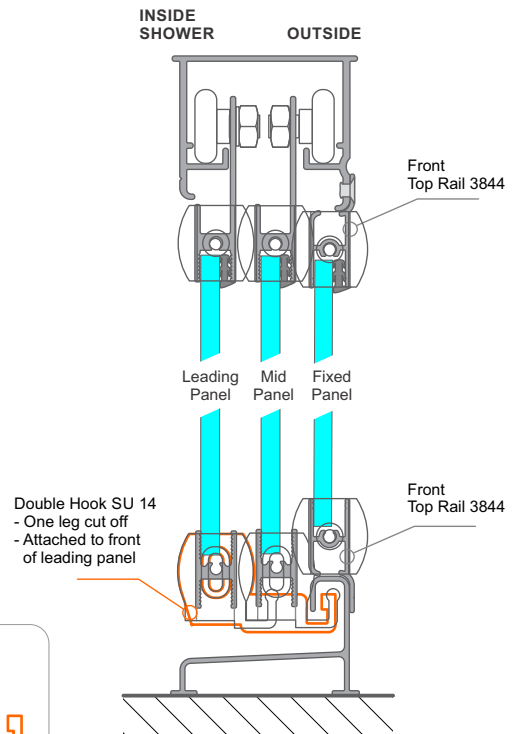
Juralco Trident Shower Door System - Typical Cross Sections

Three and Two Door
Typical Vertical
Cross Sections

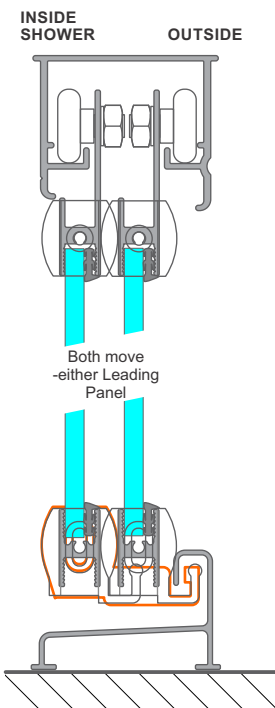
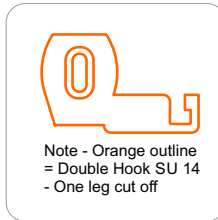
- These sections apply to both Framed or Framless Doors (no stiles)
- Glass 4mm for Framed, 6mm for Frameless Doors. Always 4mm for Returns.



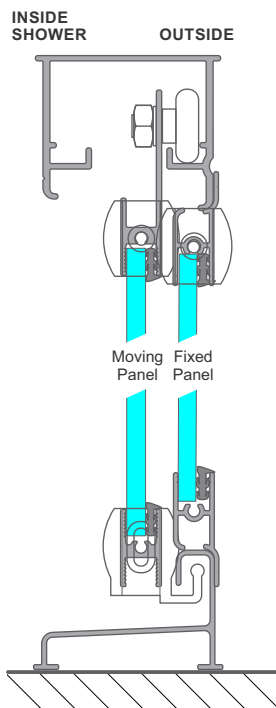
**Three Door
Back mounted Fixed Panel
2 x Sliding, 1 x Fixed**



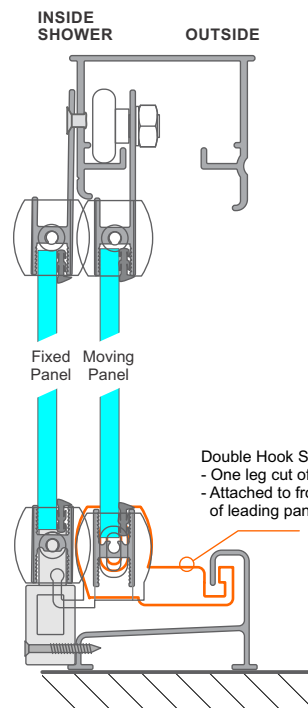
**Three Door
Front mounted Fixed Panel
2 x Sliding, 1 x Fixed**



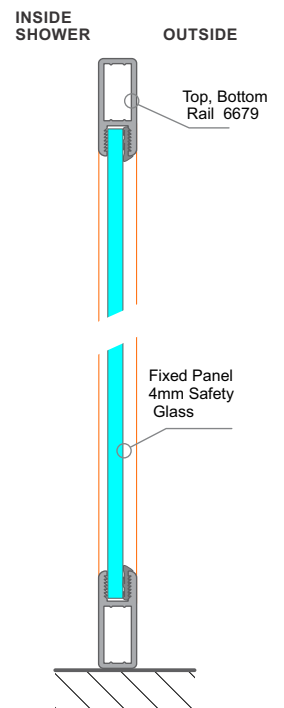
**Two Door
No Fixed Panel
2 x Sliding**



**Two Door
Front mounted Fixed Panel
1 x Sliding, 1 x Fixed**



**Two Door
Back mounted Fixed Panel
1 x Sliding, 1 x Fixed**



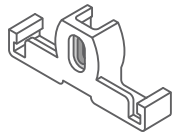
Return Panel

Note - Two door systems use exactly same components as per Three Door

Juralco Trident Shower Door System - Hook, Block Arrangements

Hook, Block Arrangements

Note - Only Fixed Panel Stiles shown
 - Framed / Framless Stiles not shown
 - Sill not to scale
 - All shown as RH entry.



Double Hook
SU 14
One hook to be cut off
depending on hand.



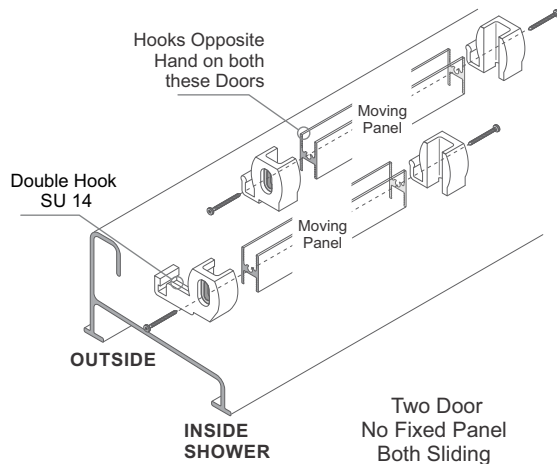
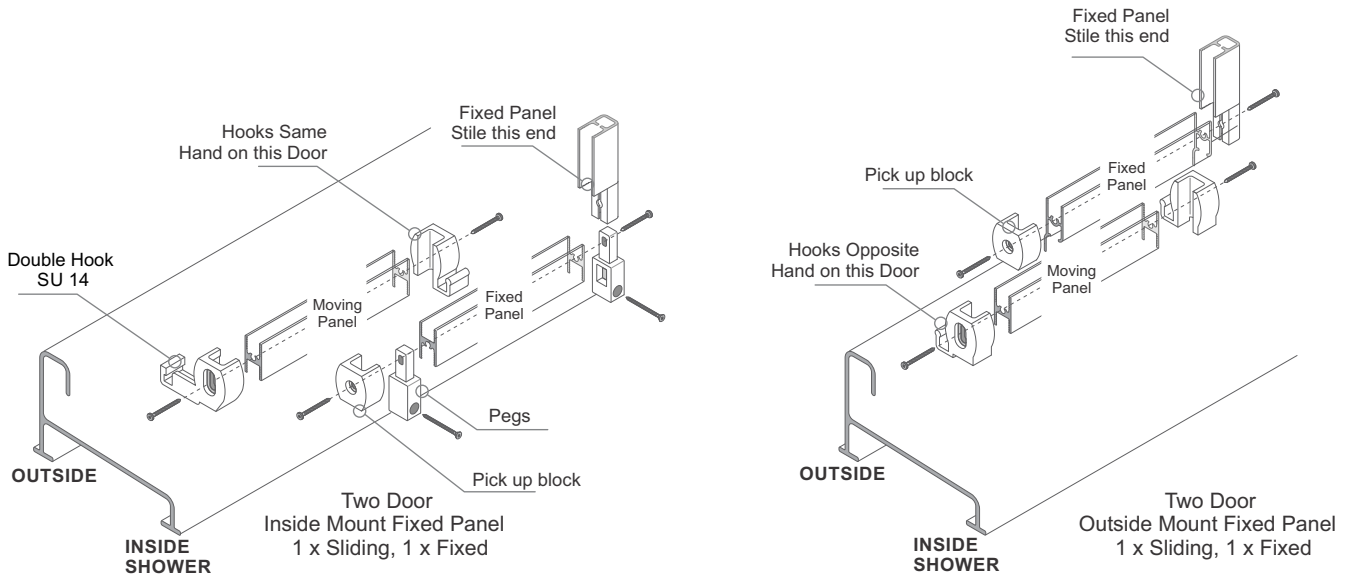
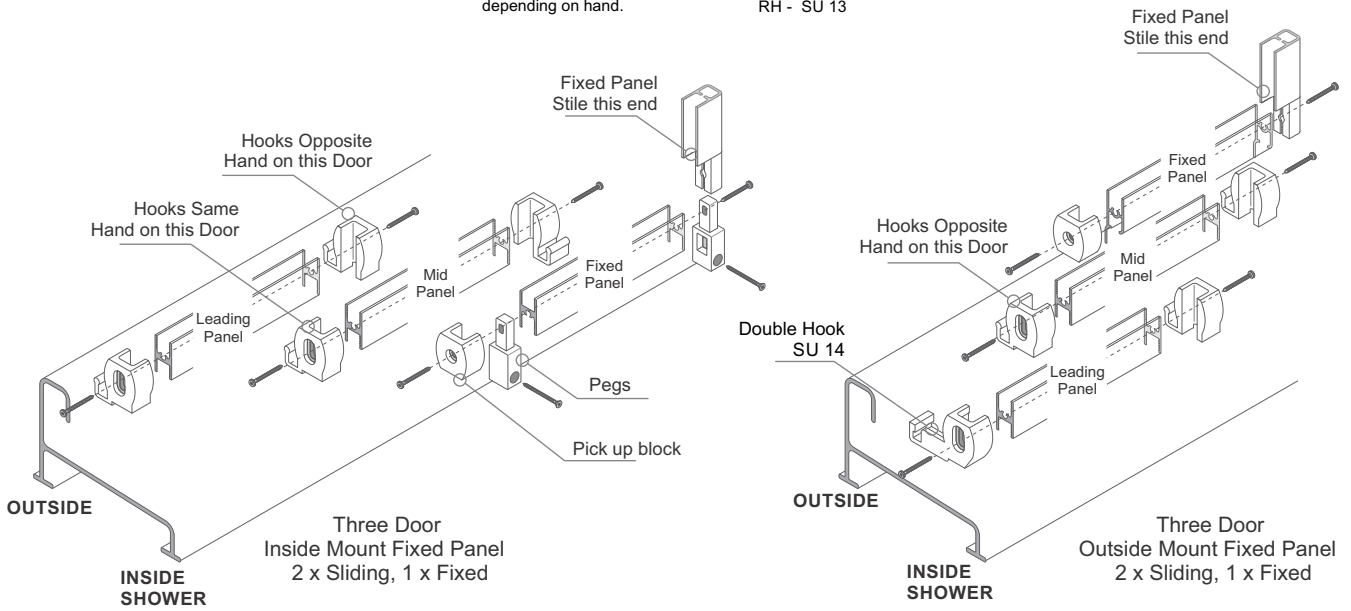
Hook
(Shown LH)
LH - SU 12
RH - SU 13



Pickup Block
SU 10



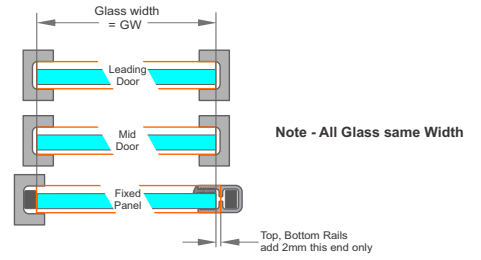
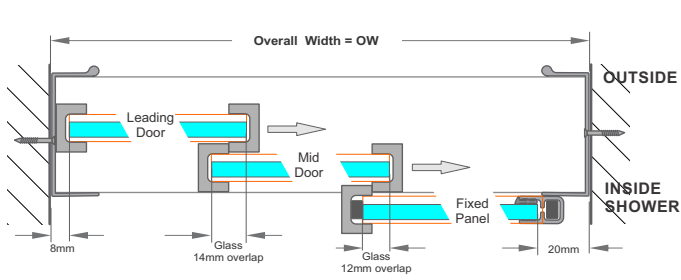
Peg
SU 11



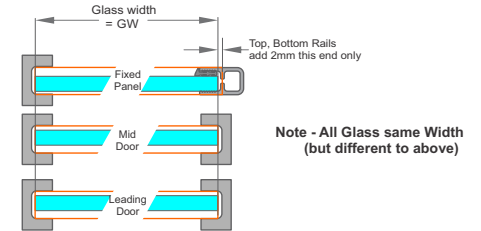
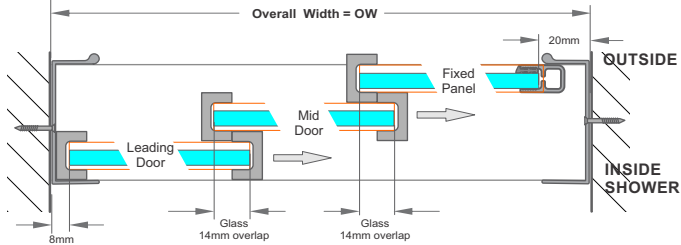
Juralco Trident Shower Door System - Cutting Allowances

Three Door Width Allowances

Frameless Three Door
Back mounted Fixed Panel

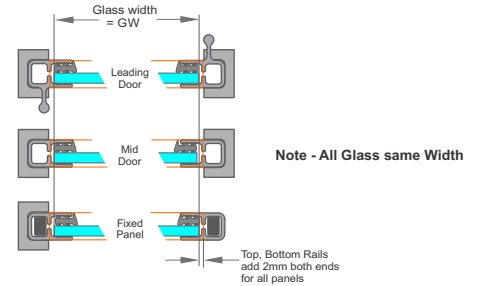
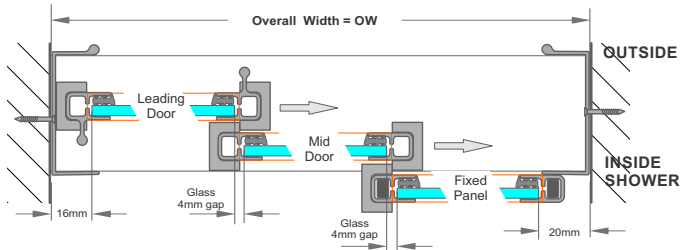


Frameless Three Door
Front mounted Fixed Panel

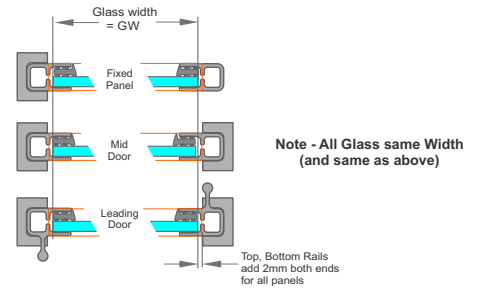
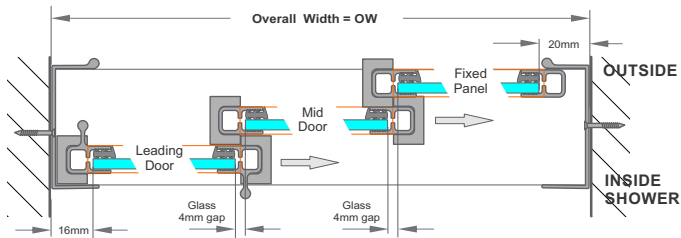


Note - Glass Widths for the above two configurations are different. Glass all 6mm.

Framed, Three Door
Back mounted Fixed Panel

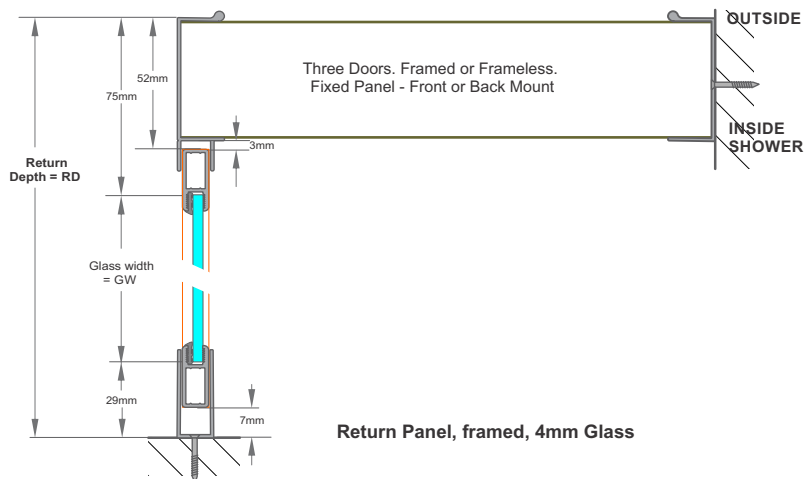


Framed Three Door
Front mounted Fixed Panel



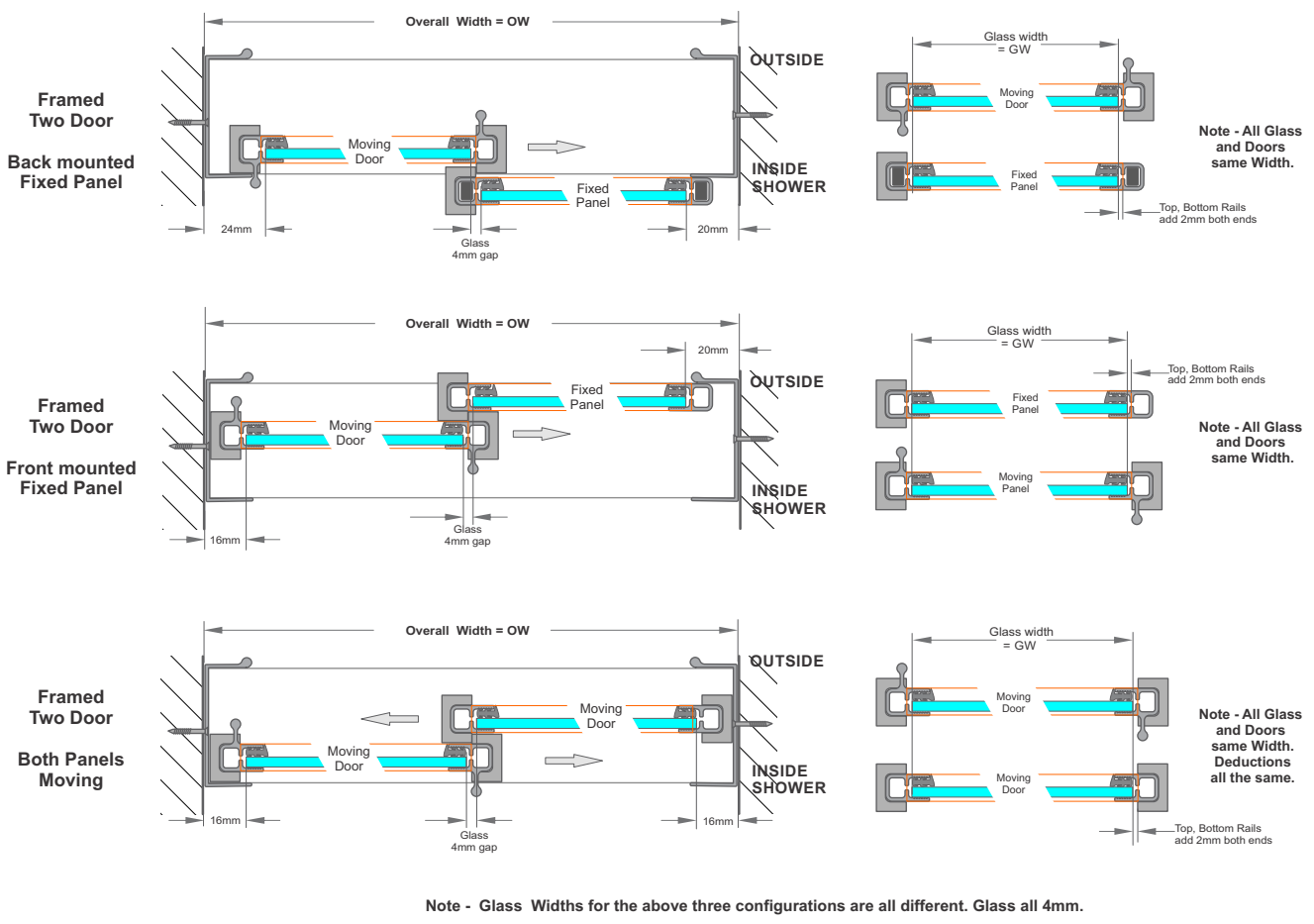
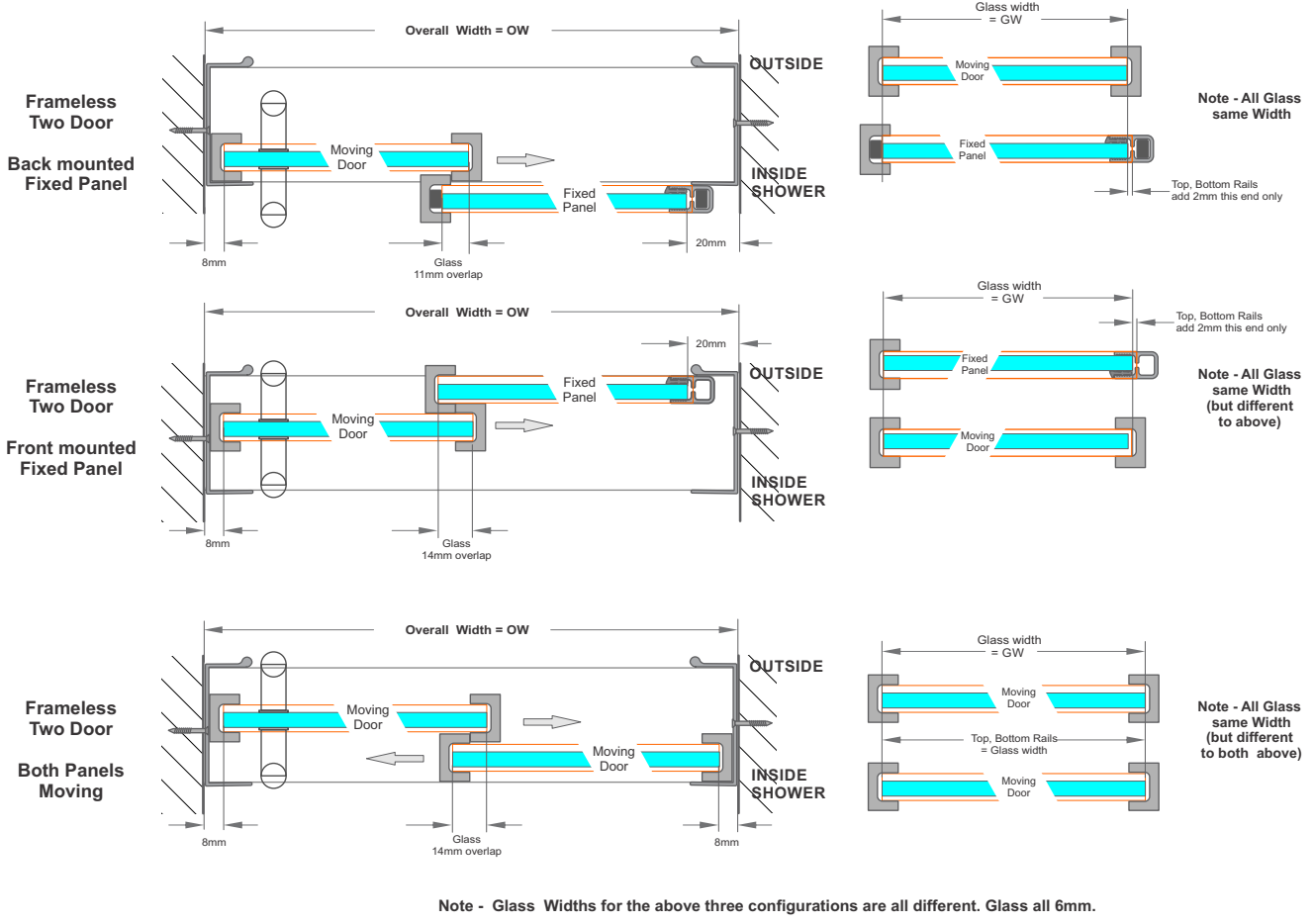
Note - Glass Widths for the above two configurations are the same. Glass all 4mm.

Return Depth Allowances



Juralco Trident Shower Door System - Cutting Allowances

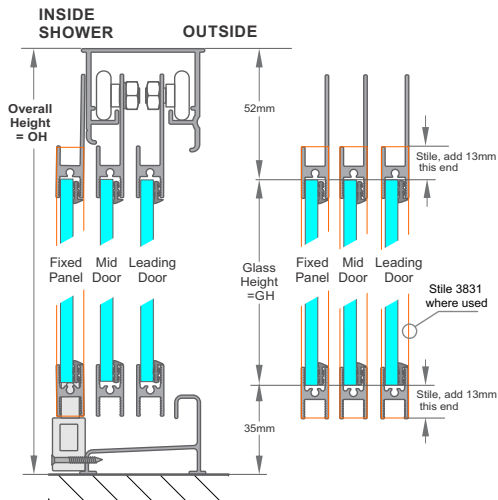
Two Door Width Allowances



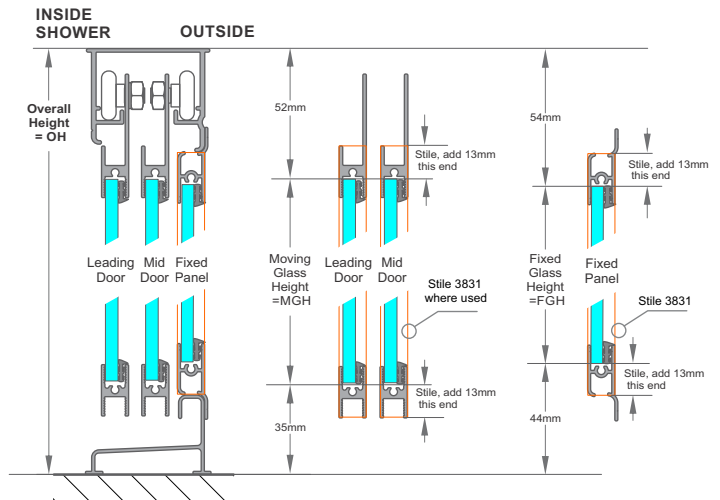
Juralco Trident Shower Door System - Cutting Allowances

Three, Two Door and Return Height Allowances

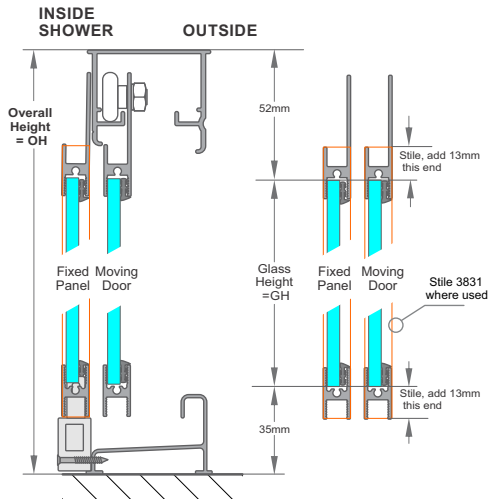
- Height considerations apply to both Framed or Framless Doors (no stiles) equally
- Glass 4mm for Framed, 6mm for Frameless Doors. Always 4mm for Returns.
- Stiles on all edges if Framed. 1 x Stile on back edge of fixed panel only if Frameless



**Three Door
Back mounted Fixed Panel
2 x Sliding, 1 x Fixed**

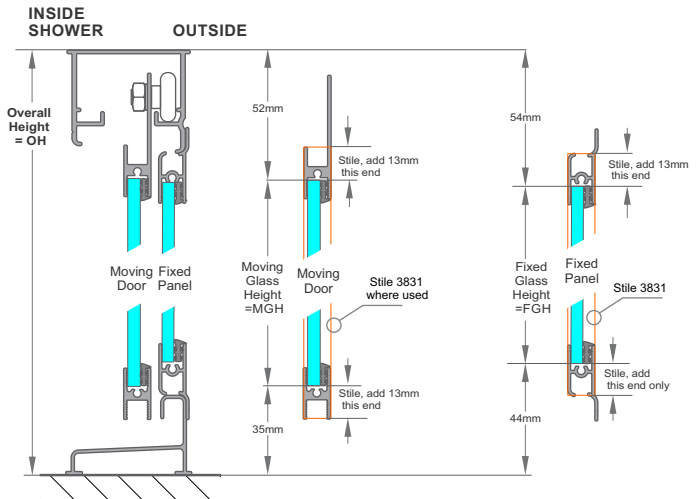


**Three Door
Front mounted Fixed Panel
2 x Sliding, 1 x Fixed**

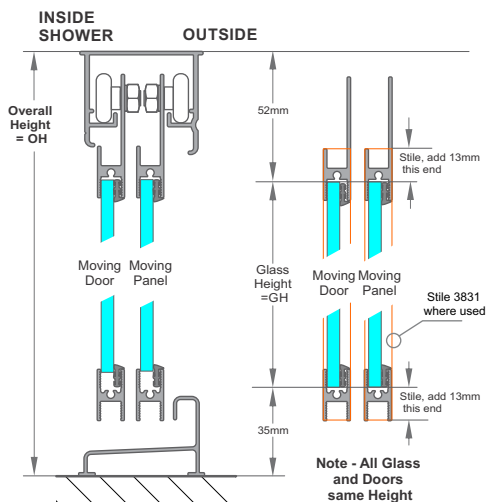


**Two Door
Back mounted Fixed Panel
1 x Sliding, 1 x Fixed**

Note - For 90 deg Twin door Shower the Leading edge of the Moving Door has a Corner Stile.

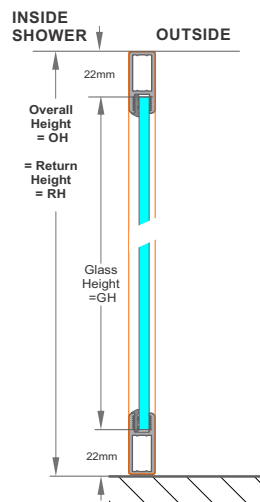


**Two Door
Front mounted Fixed Panel
1 x Sliding, 1 x Fixed**



**Two Door
No Fixed Panel
2 x Sliding**

Note - All Glass and Doors same Height



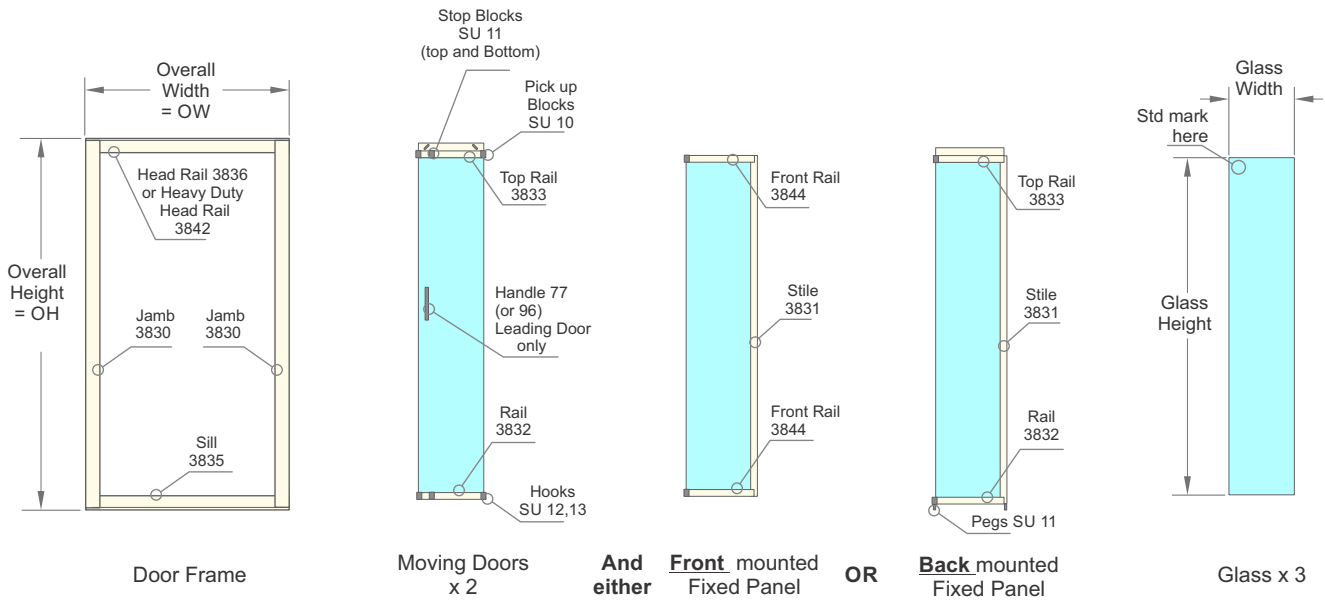
Return Panel



Juralco Trident Shower Door System - Cutting

**Frameless, Three Door
Back or Front
Fixed Panel**

- Glass all toughened 6mm, Polish all edges
- Use Heavy Duty Head Rail 3842 if width greater than 1200mm
- If frame out of square and DFW is different at top and bottom, use the smaller DFW in cutting below



Note - For front fix panel option only, Moving Door glass height (MGH) and Fixed Panel glass height (FGH) are different. Widths all the same

Applies to all Door Frames

	ITEM	PART	Formula, mm
1	Width Door Frame Width = OW		OW
2	Width Door Frame, Head Rail, Heavy Duty or normal	3842, 3836	OW - 3
3	Width Door Frame, Sill	3835	OW - 3

1	Height Door Frame Height = OH		OH
2	Height Door Frame, Jambs	3830	OH - 3

Frameless, Three Door, Front Fixed Panel

1	Width Moving Doors and Fixed Panel, Glass width = GW	6mm	OW / 3 = All GW
2	Width Moving and Mid Door - Top, Bottom Rails	3833, 3832	GW
3	Width Front Fixed Panel - Top, Bottom Rails	3844	GW + 2

1	Height Moving Doors, Glass height = MGH	6mm	OH - 87 = MGH
2	Height Fixed Panel, Glass height = FGH	6mm	OH - 98 = FGH
3	Height Fixed Panel, Stile (one only)	3831	FGH + 26

Frameless, Three Door, Back Fixed Panel

1	Width Moving Doors and Fixed Panel, Glass width = GW	6mm	(OW - 2) / 3 = All GW
2	Width Moving and Mid Door - Top, Bottom Rails	3833, 3832	GW
3	Width Back Fixed Panel -Top, Bottom Rails	3833, 3832	GW + 2

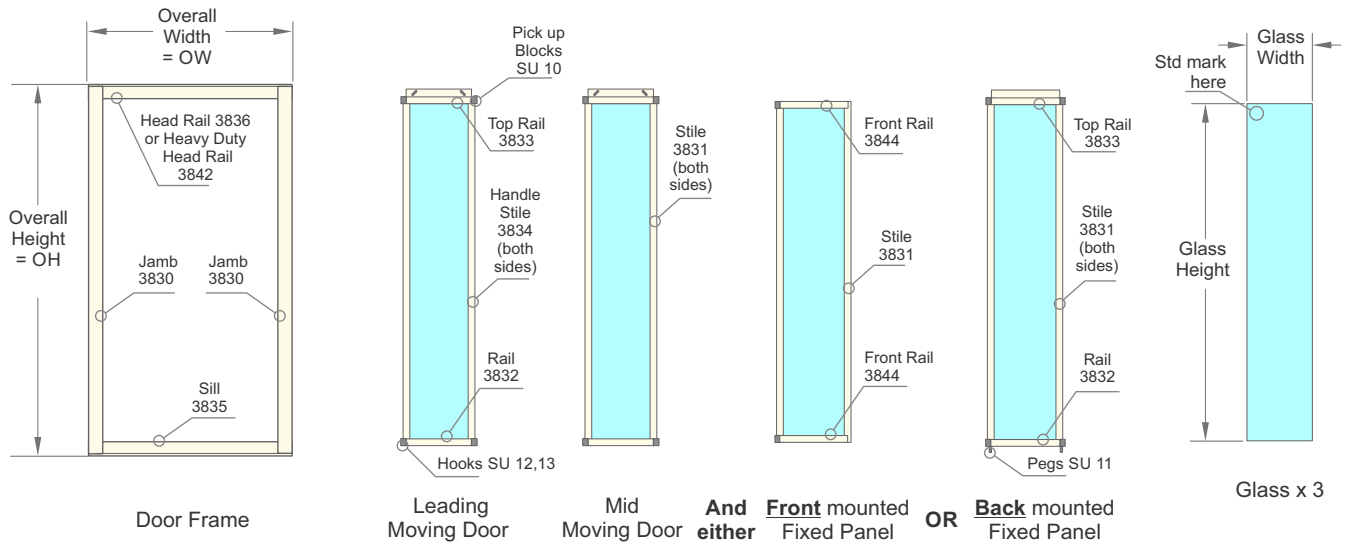
1	Height Moving Doors and Fixed Panel, Glass height = GH	6mm	OH - 87 = All GH
2	Height Fixed Panel, Stile (one only)	3831	GH + 26

Note - Alternative approach. Applies to Widths 830mm to 905mm.
Use 3 x 300mm wide glass panels. Overlap varies but OK in practice.

Juralco Trident Shower Door System - Cutting

**Framed, Three Door,
Back or Front
Fixed Panel**

- Glass all toughened 4mm, Rough arris all edges
- Use Heavy Duty Head Rail 3842 if width greater than 1200mm
- If frame out of square and DFW is different at top and bottom, use the smaller DFW in cutting below.



Note - For front fix panel option only, Moving Door glass height (MGH) and Fixed Panel glass height (FGH) are different. Widths all the same

Applies to all Door Frames				
		ITEM	PART	Formula, mm
1	Width	Door Frame Width = OW		OW
2	Width	Door Frame, Head Rail, Heavy Duty or normal	3842, 3836	OW - 3
3	Width	Door Frame, Sill	3835	OW - 3

1	Height	Door Frame Height = OH		OH
2	Height	Door Frame, Jamb	3830	OH - 3

Framed, Three Door, <u>Front</u> Fixed Panel				
1	Width	Moving Doors and Fixed Panel, Glass width = GW	4mm	(OW - 44) / 3 = All GW
2	Width	Moving and Mid Door - Top, Bottom Rails	3833, 3832	GW + 4
3	Width	Front Fixed Panel - Top, Bottom Rails	3844	GW + 4
1	Height	Moving Doors, Glass height = MGH	4mm	OH - 87 = MGH
2	Height	Leading Moving Door, Handle Stiles	3834	MGH + 26
3	Height	Mid Door, Stiles	3831	MGH + 26
4	Height	Fixed Panel, Glass height = FGH	4mm	OH - 98 = FGH
5	Height	Fixed Panel, Stile	3831	FGH + 26

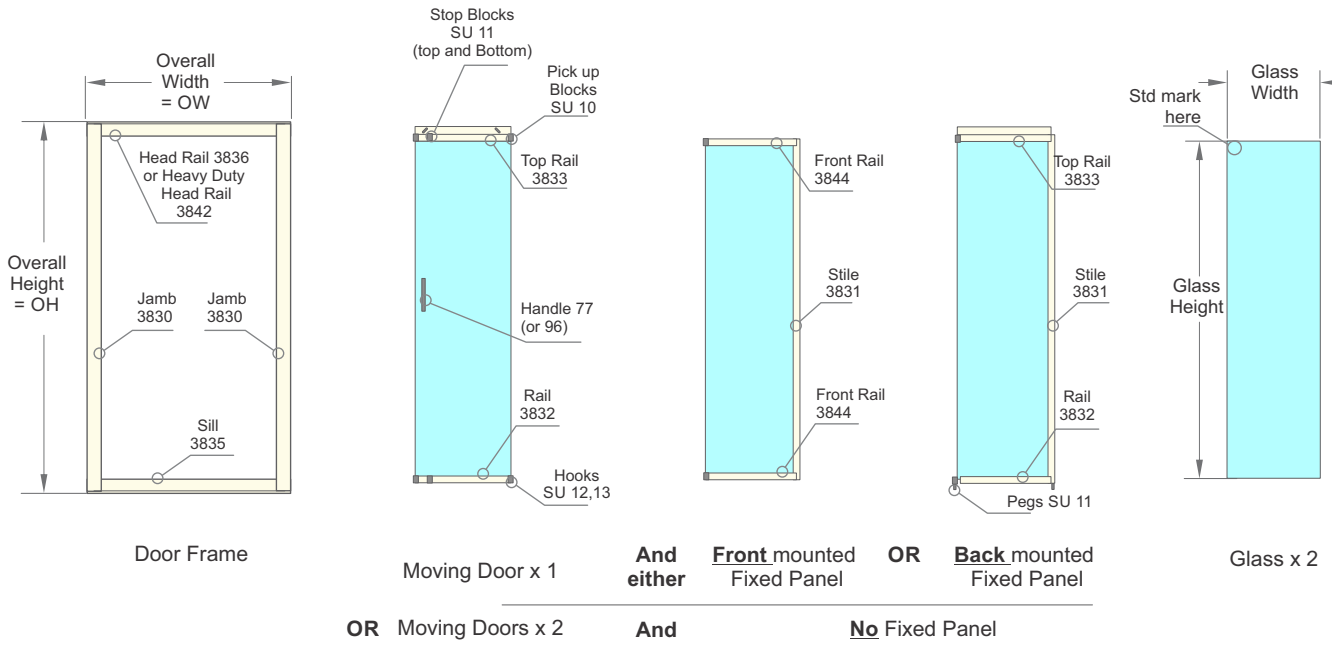
Framed, Three Door, <u>Back</u> Fixed Panel				
1	Width	Moving Doors and Fixed Panel, Glass width = GW	4mm	(OW - 44) / 3 = All GW
2	Width	Moving Doors and Fixed Panel, Top, Bottom Rails	3833, 3832	GW + 4

1	Height	Moving Doors and Fixed Panel, Glass height = GH	4mm	OH - 87 = All GH
2	Height	Leading Moving Door, Handle Stiles	3834	GH + 26
3	Height	Mid Door and Fixed Panel, Stiles	3831	GH + 26

Juralco Trident Shower Door System - Cutting

Frameless, Two Door, Back, Front or No Fixed Panel

- Glass all toughened 6mm, Polish all edges
- Use Heavy Duty Head Rail 3842 if width greater than 1200mm
- If frame out of square and DFW is different at top and bottom, use the smaller DFW in cutting below.



Note - For front fix panel option only, Moving Door glass height (MGH) and Fixed Panel glass height (FGH) are different. Widths all the same

Applies to all Door Frames				
		ITEM	PART	Formula, mm
1	Width	Door Frame Width = OW		OW
2	Width	Door Frame, Head Rail, Heavy Duty or normal	3842, 3836	OW - 3
3	Width	Door Frame, Sill	3835	OW - 3

1	Height	Door Frame Height = OH		OH
2	Height	Door Frame, Jamb	3830	OH - 3

Frameless, Two Door, Front Fixed Panel				
1	Width	Moving Door and Fixed Panel, Glass width = GW	6mm	(OW - 14) / 2 = All GW
2	Width	Moving Door - Top, Bottom Rails	3833, 3832	GW
3	Width	Front Fixed Panel - Top, Bottom Rails	3844	GW + 2

1	Height	Moving Door, Glass height = MGH	6mm	OH - 87 = MGH
2	Height	Fixed Panel, Glass height = FGH	6mm	OH - 98 = FGH
3	Height	Fixed Panel, Stile (one only)	3831	FGH + 26

Frameless, Two Door, Back Fixed Panel				
1	Width	Moving Door and Fixed Panel, Glass width = GW	6mm	(OW - 19) / 2 = All GW
2	Width	Moving Door - Top, Bottom Rails	3833, 3832	GW
3	Width	Back Fixed Panel - Top, Bottom Rails	3833, 3832	GW + 2

1	Height	Moving Door and Fixed Panel, Glass height = GH	6mm	OH - 87 = All GH
2	Height	Fixed Panel, Stile (one only)	3831	GH + 26

Frameless, Two Door, NO Fixed Panel				
1	Width	Moving Doors, Glass width = GW	6mm	(OW - 2) / 2 = All GW
2	Width	Moving Doors - Top, Bottom Rails	3833, 3832	GW

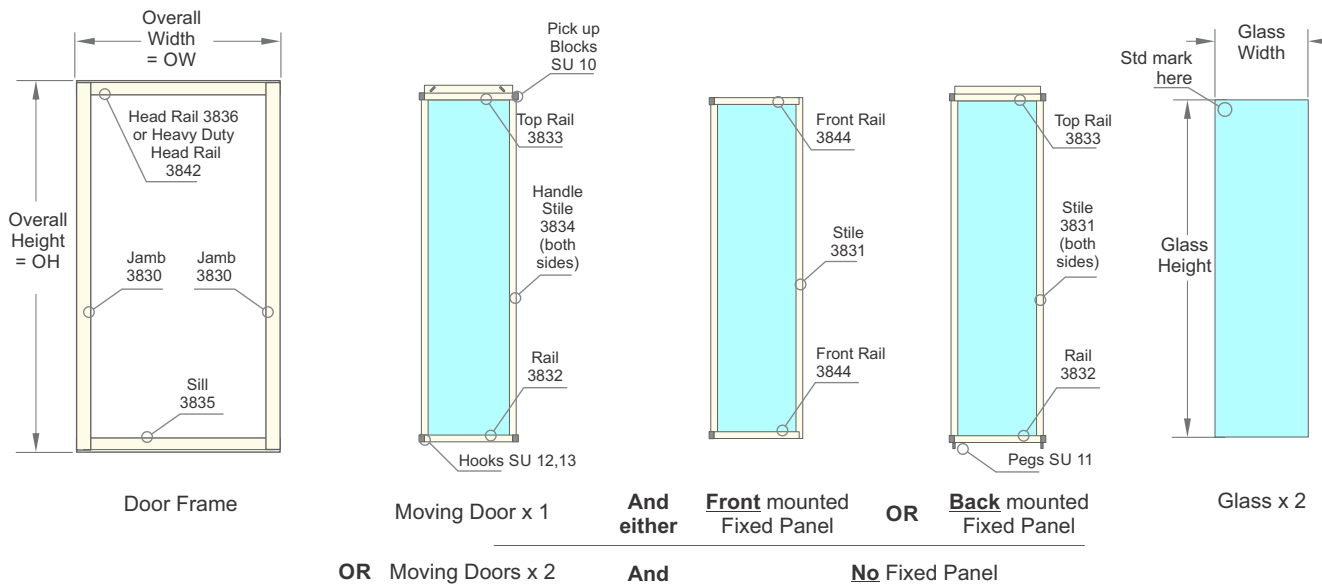
1	Height	Moving Doors, Glass height = GH	6mm	OH - 87 = All GH
---	--------	---------------------------------	-----	-------------------------



Juralco Trident Shower Door System - Cutting

**Framed, Two Door,
Back, Front or No
Fixed Panel**

- Glass all toughened 4mm, Rough arris all edges
- Use Heavy Duty Head Rail 3842 if width greater than 1200mm
- If frame out of square and DFW is different at top and bottom, use the smaller DFW in cutting below.



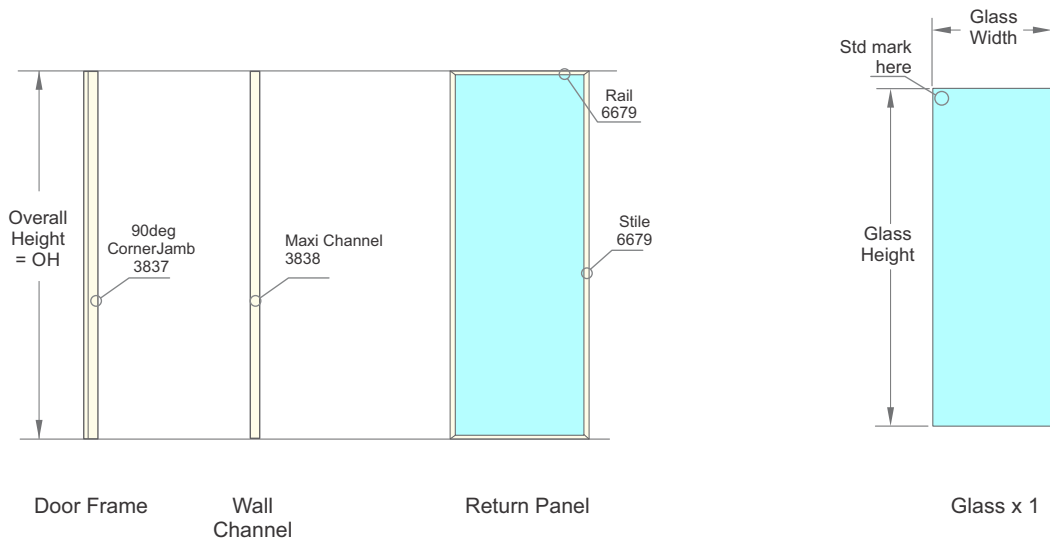
Note - For front fix panel option only, Moving Door glass height (MGH) and Fixed Panel glass height (FGH) are different. Widths all the same

Applies to all Door Frames				
		ITEM	PART	Formula, mm
1	Width	Door Frame Width = OW		OW
2	Width	Door Frame, Head Rail, Heavy Duty or normal	3842, 3836	OW - 3
3	Width	Door Frame, Sill	3835	OW - 3
1	Height	Door Frame Height = OH		OH
2	Height	Door Frame, Jamb	3830	OH - 3
Framed, Two Door, Front Fixed Panel				
1	Width	Moving Door and Fixed Panel, Glass width = GW	4mm	(OW - 40) / 2 = All GW
2	Width	Moving Door - Top, Bottom Rails	3833, 3832	GW + 4
3	Width	Front Fixed Panel - Top, Bottom Rails	3844	GW + 4
1	Height	Moving Door, Glass height = MGH	4mm	OH - 87 = MGH
2	Height	Moving Door, Handle Stile	3834	MGH + 26
3	Height	Fixed Panel, Glass height = FGH	4mm	OH - 98 = FGH
4	Height	Fixed Panel, Stiles	3831	FGH + 26
Framed, Two Door, Back Fixed Panel				
1	Width	Moving Door and Fixed Panel, Glass width = GW	4mm	(OW - 48) / 2 = All GW
2	Width	Moving Doors and Fixed Panel, Top, Bottom Rails	3833, 3832	GW + 4
3	Height	Moving Door and Fixed Panel, Glass height = GH	4mm	OH - 87 = All GH
4	Height	Moving Door, Handle Stiles	3834	GH + 26
5	Height	Fixed Panel, Stiles	3831	GH + 26
Framed, Two Door, No Fixed Panel				
1	Width	Moving Doors, Glass width = GW	4mm	(OW - 36) / 2 = All GW
2	Width	Moving Doors, Top, Bottom Rails	3833, 3832	GW + 4
1	Height	Moving Doors, Glass height = GH	4mm	OH - 87 = All GH
2	Height	Moving Doors, Handle Stiles	3834	GH + 26

Juralco Trident Shower Door System - Cutting

90deg Return Panel

- Framed - Glass all toughened 4mm, Rough arris all edges
- If measurements out of square, will be taken up in Maxi channel



90 deg Return Panel				
		ITEM	PART	Formula, mm
1	Width	Return Depth = RD		RD
2	Width	Return Panel, Glass width = GW	4mm	RD - 108 = GW
3	Width	Return Panel, Top, Bottom Rails	6679	RD - 60
1	Height	Return Height = Door Frame Height = OH		OH
2	Height	Return Panel, Glass height = GH	4mm	OH - 48 = GH
3	Height	Maxi Channel	3838	OH
4	Height	Return Panel, Stiles	6679	OH
5	Height	Return Jamb (part of Door Frame)	3837	OH

Juralco Trident Shower Door System - Machining

Door Frame and Corner Sections Machining

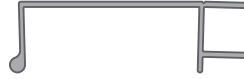
- All cut square, no machining



Bottom Rail
3832



Front Rail
3844



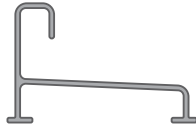
90 deg Corner Jamb
3837



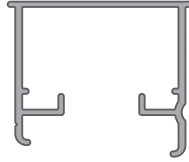
Maxi Channel
3838



Jamb
3830

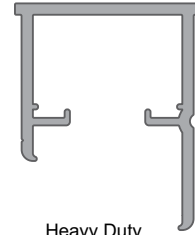


Sill 3835



Head Rail
3836

Use for 3 x panel
up to 1490mm
or for 2 x Panel
up to 1190mm

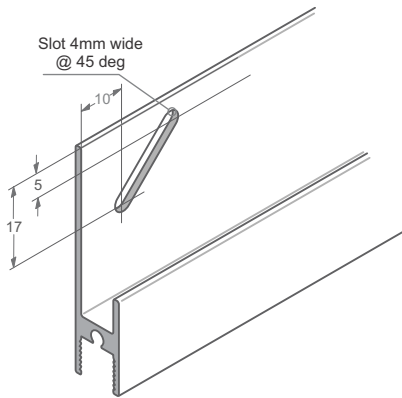


Heavy Duty
Head Rail
3842

Use for 3 x panel
over 1500mm
or for 2 x Panel
over 1200mm

Machining Extrusions

Machining Top Rail 3833
for Shower wheels
- Cut square, 2 x slots



Top Rail
3833



Slot 4mm wide @ 45 deg at each end of Top Rail 3833

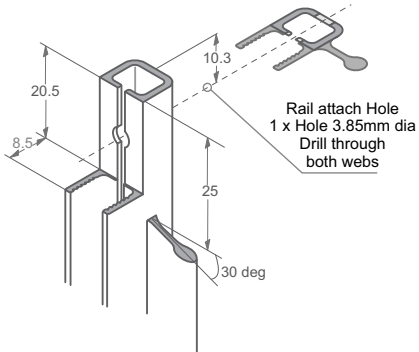
Machining ends of Stile
extrusions
- Cut square, mill recess
drill hole, rebate handle



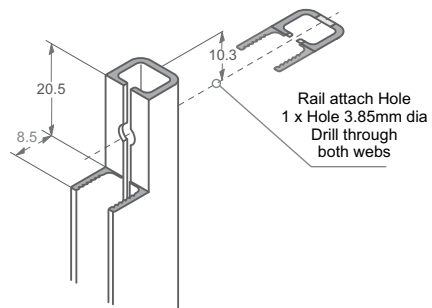
Handle Stile
3834



Stile
3831



Handle Stile 3834
Identical machining
each end



Stile 3831
Identical machining
each end



JURALCO

www.juralco.co.nz ph (09) 478 8018

Juralco Trident Shower Door System

Issue 1/17
Page 18

Juralco Trident Shower Door System - Assembly

Manufacture
Three Door Framed
Back Fixed Panel

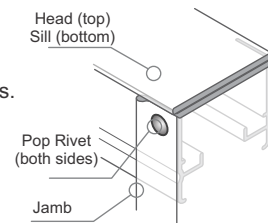
Note: Prior to delivering to site, unpack and check all items

- 1 - Inspect all extrusions for damage, surface defects. Assemble all necessary components. Ensure workplace is clean.
- 2 - Cut all aluminium extrusions to size as per cutting formula schedule. Machine stiles to drawings.

Frame:

- 1 - Fit jambs to head and sill sections riveting into position as illustrated using colour matched rivets.
Make sure frame matches site measurements incl any out of square.

Four corners x 2 = 8 rivets



A - Door Panels:

- 1 - **Fixed Panel** assembly requires 2 x 3831 stiles, 1 x 3832 bottom rail and 1 x 3833 un-punched top rail.
Place 1 x SU 10 pick up block on the top panel stile opposite the jamb side of the door frame secure through the block and to the top rail using a 6g x 25 pan stainless steel screw. Secure opposite (jamb side) by screwing direct through the stile into the top rail.
Push 2 x SU 11 pegs up into the bottom of each stile and screw into the stile through each peg and into bottom rail.
Note: Before final assembly of bottom rail insert 4mm Glass.
- 2 - **Trailing Panel** assembly requires 2 x 3831 plain styles, 1 x 3832 bottom rail and 1 x 3833 punched top rail. Place the 2 x SU 10 pickup blocks on the top of each stile and secure through each SU 10 and stile into top rail using 6g x 25 stainless steel screws.
Note: The flat surface of the 3833 profile always faces the front of the shower unit. Using the appropriate bottom hooks (SU 12/13) screw through, into the bottom rail 3832. Note: insert 4mm Glass into door frame before fitting bottom rail into place.
Fit wheel assemblies to the rear of the 3833 section securing in approximately middle of each slot.
- 3 - **Leading Panel** assembly requires 2 x Handle stiles 3834, 1 x 3832 bottom rail and 1 x 3833 punched top rail. The 3834 handle stile must be fitted to the top and bottom rails so as the leading handle section of this stile will face into the shower enclosure. The rear handle of the leading door panel faces outwards from the shower enclosure. Assemble panel as in 2 above using 2 x bottom hooks which face outwards to front of the shower sill 3835. Fit wheels to the 3833 top rail with wheels secured to the flat front side.
- 4 - **Glass** - With each panel facing upwards representing the front outside of the shower enclosure wedge into place using clear 31 wedge. Ensure the glass is fitted in frame as a 'loose' fit and is not binding on the inner extrusion ribs. Ensure each panel is true and square after glazing.
- 5 - Clean up, pack securely, ready for transport to site.

Manufacture
Other Configurations

B - Three Door, Frameless, Back mounted Fixed Panel

All as (A) above, but delete reference to stiles, apart from the one on the back of the Fixed Panel. Attach 6mm Glass to top and bottom rails with clear Rhodorsil V-60 and the 31 Glazing strip on the outside. Clean off all excess V-60 and wait 24 hrs to harden.

C - Three Door, Framed, Front mounted Fixed Panel

All as (A) above, but delete reference to Back Panel. **Front Panel** assembly requires 2 x 3831 stiles and 2 x 3844 front rails. Make up panel, including 4mm Glass, then attach to Head and Sill, leaving a 10mm gap between stile and jamb.

D - Three Door, Frameless, Front mounted Fixed Panel

All as (A) above, but delete reference to Back Panel. **Front Panel** assembly requires 1 x 3831 stile and 2 x 3844 front rails. Attach 6mm Glass to top and bottom rails with clear Rhodorsil V-60 and the 31 Glazing strip on the outside. Clean off all excess V-60 and wait 24 hrs to harden. Attach to Head and Sill, leaving a 10mm gap between stile and jamb.

E - All Two Door Configurations.

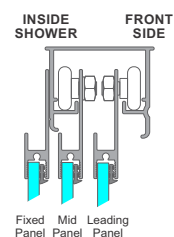
All as above. Fixed panel references the same. Only one moving panel.

Juralco Trident Shower Door System - Assembly, Installation

Assembly Three Door Framed Back Fixed

A - Assembly

- 1 - Assemble the three panels on a large flat table taking care that the flat fins of the 3833 top rail are facing Upwards on both doors.
- 2 - Check that the wheels assemblies are facing the correct way. Also check bottom hooks have been correctly selected as an alternative placement is required for right and left hand fixed panel fittings. Both hooks face front of sill.



- 3 - Place door outer frame on the bench with the inside of the frame facing upwards. Rest the fixed panel on the frame so that the 3833 top rail flat leaf is hard against the jamb and the bottom pegs SU 11 sit neatly on the sill 3835 recess. The fixed panel stile 3831 nearest the outer frame jamb will overlap the jamb.
- 4 - Rivet the 3833 top rail to the head 3836 with the stile 10mm in from the end
- 5 - Drill and screw through the bottom pegs SU 11 to the sill 3835.
- 6 - Fit the leading door panel wheel assembly into the front track of the head 3836. Cup the bottom hooks into the lip of the sill 3835.
- 7 - Fit the trailing door wheels into the rear track of the head section 3836. Tilt panel away from the leading panel to allow the SU 10 pick up blocks to cross each other including the fixed panel SU 10.
- 8 - Adjust the wheel assemblies of each door so as to have each top pick up block SU 11 and bottom hook striking simultaneously those of the other panel. The leading panel should also be adjusted so that the closing edge evenly strikes the jamb 3830 when closed.
- 9 - Nip up wheel nuts after all adjustments made.
- 10 - Adjust each bottom hook by slackening off the screws and raising or lowering each hook so as to allow approximately a 2 mm gap between the top of the hook and the extrusion in which its runs. Tighten up screws until door runs smoothly in tracks.

Installation

Note: Prior to delivering to site, unpack and check all items

- The Frame (Sill, Jamb and Head rail + fixed panel are all made up / ex factory.
- The completed Doors are supplied separately.

- 1 - Unpack Frame and Doors, inspect for damage.
- 2 - Present frame to opening, and attach jamb to wall with 4 off 6 x 35 SS screws each side.
- 3 - Insert moving doors, temporarily removing/loosening pick up blocks or pegs as necessary.
- 4 - Adjust all rollers so doors hang square, and move freely with correct pick up block action.
- 5 - Apply a bead of [Rhodorsil V-60](#) on the outside only of both the Jamb and Sill.
- 6 - Clean off all fingermarks. Leave site clean and tidy.