



 JURALCO

JURALCO MAGNA SHOWER DOOR SYSTEMS

ISSUE 1/17

Juralco Magna Shower Door Systems

Juralco Aluminium Building Products Ltd designs and distributes specialist aluminium joinery systems through a national network of franchised fabricators and agents.

For more than 25 years we have been at the forefront of specialist aluminium door and window products suitable for New Zealand joinery and building methods. Our comprehensive product range includes security and insect screens, balustrades and gates, shutters and awnings, shower screens, wardrobe doors and organisers and internal doors.

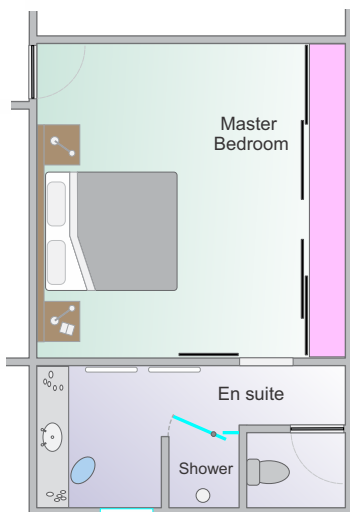
available as either a mid or end pivot system. The mid pivot door is suited for larger bathrooms, the end pivot door for more compact situations. Ideal for any sized bathroom; the Magna frame provides colour as well as the practicality of a watertight seal. Even the most out-of plumb walls can be effectively compensated for fitting comfortably into your bathroom's specifications.

The door panel is fully framed, including both a full length handle extrusion and magnetic strips for a watertight seal. The Magna Shower Door system is custom made to your specifications. Also available are 45 and 90 degree returns.

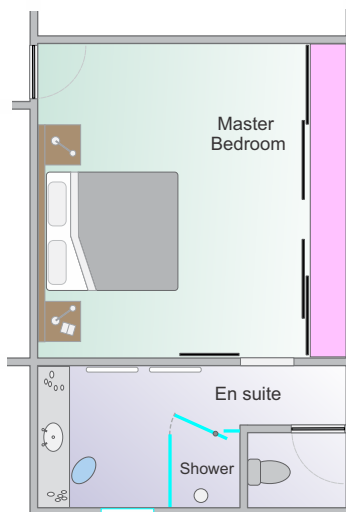
This Guide is intended for use by Architects, Specifiers and Fabricators
 Pages 2-3 cover areas of general interest. Pages 4 onwards are intended for Fabricators.
 Pages 4-20, Mid Pivot doors. Pages 21-32, End Pivot doors.

Layouts

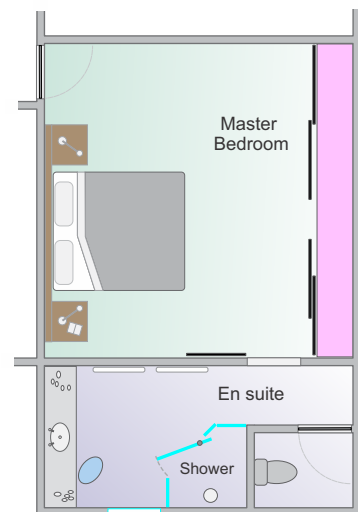
Shown below are the three layout possibilities for the Magna Shower Door System



Juralco Magna Shower Door System
 Mid Pivot Door with or without fixed Panel.



Juralco Magna Shower Door System
 Mid Pivot Door with or without fixed Panel and 90 deg glass Return



Juralco Magna Shower Door System
 Mid Pivot Door with or without fixed Panel and 2 x 45 deg glass Returns

All these configurations are available as an End pivot Door - see over

Juralco Magna Shower Door System

General Description

- The Magna Shower Pivot Door system is designed to provide a range of easily installed doors to suit any opening.
- All doors and returns are custom made to your specifications.
- All doors are constructed from our propriety range of aluminium extrusions.
- Pivot Doors, Fixed Panels and Returns are all 4mm toughened glass, to NZS 4233 Part 3 for human impact requirements.
- Infill panels are Glass, either Clear, Frosted or Patterned.
- Installation system copes with out of plumb walls.
- Extrusion frames available in White or Almond powdercoat.
- Designed for installation with standard Shower trays, or direct on to suitable flooring.

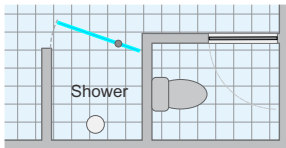
Size Range

MID PIVOT DOOR

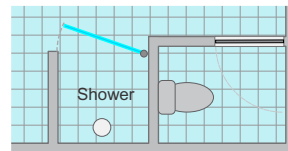
- 1 - Standard heights are 1830mm and 1930mm.
- 2 - Door only - no fixed panel - max width 910mm to give entry width of 760mm.
- 3 - Door and fixed panel - max width 1600mm to give max entry width of 760mm.
- 4 - Returns custom made to your specifications

END PIVOT DOOR

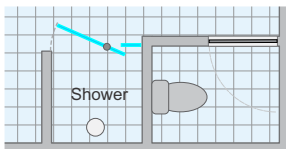
- 1 - Standard heights are 1830mm and 1930mm.
- 2 - Door only max width 792mm to give entry width of 760mm.
- 3 - Returns custom made to your specifications



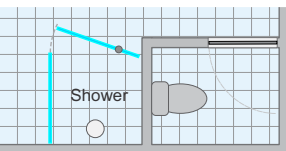
Juralco Magna Shower Door
Mid Pivot Door - no fixed panel



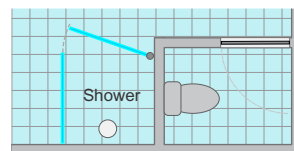
Juralco Magna Shower Door
End Pivot Door



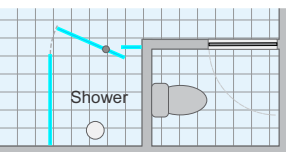
Juralco Magna Shower Door
Mid Pivot Door and fixed panel



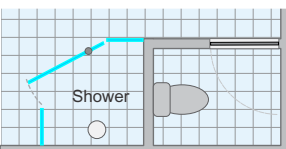
Juralco Magna Shower Door
Mid Pivot Door, no fixed panel
and 90 deg Return



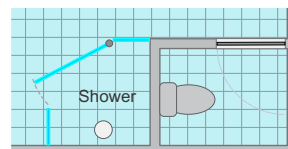
Juralco Magna Shower Door
End Pivot Door
and 90 deg Return



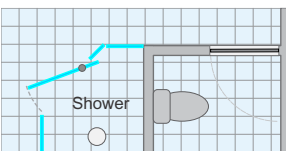
Juralco Magna Shower Door
Mid Pivot Door and fixed panel
and 90 deg Return



Juralco Magna Shower Door
Mid Pivot Door, no fixed panel and
2 x 45 deg Returns

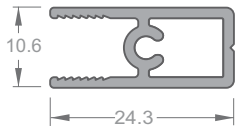


Juralco Magna Shower Door
End Pivot Door and
2 x 45 deg Returns

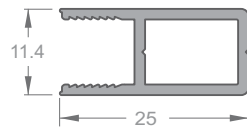


Juralco Magna Shower Door
Mid Pivot Door and fixed panel and
2 x 45 deg Returns

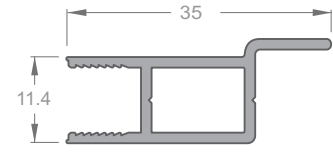
Juralco Magna Shower Door System - Mid Pivot Type - Extrusions



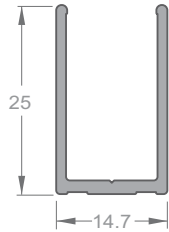
PANEL RAIL
Part No 4753



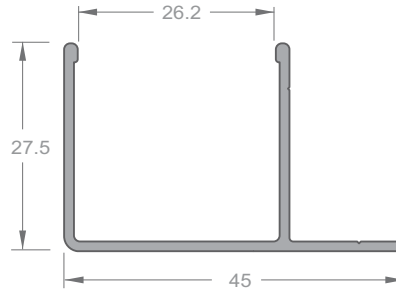
PANEL STILE
Part No 4754



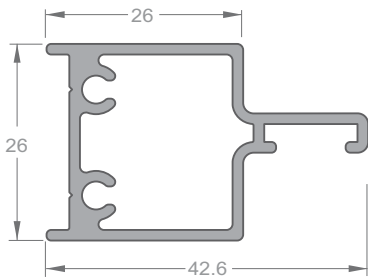
CENTRE STILE
Part No 4719



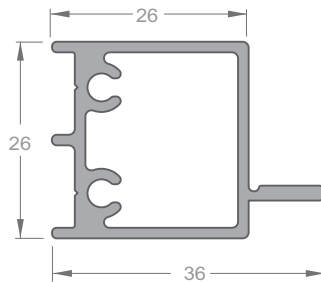
RETURN WALL CHANNEL
Part No 4755



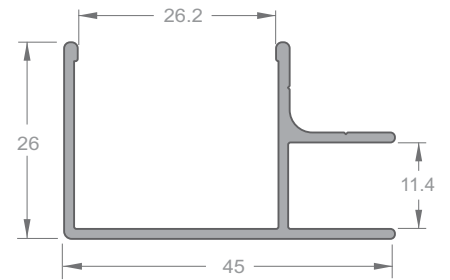
WALL CHANNEL
Part No 4720



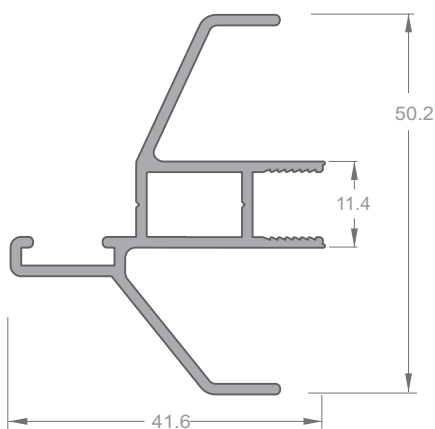
HANDLE JAMB
Part No 4716



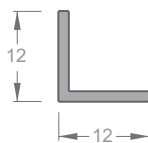
PIVOT JAMB
Part No 4715



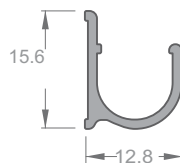
90 DEG CORNER CHANNEL
Part No 4723



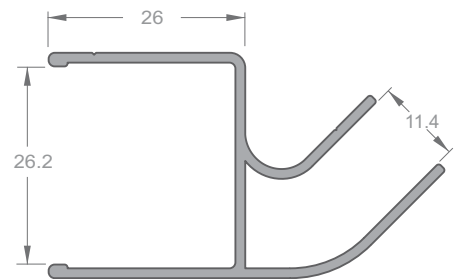
HANDLE STILE
Part No 4717



FIXED PANEL ANGLE
Part No JA 110



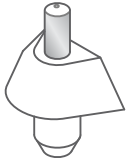
DRIP RAIL
Part No 4740



45 DEG CORNER CHANNEL
Part No 4718

Juralco Magna Shower Door System - Mid Pivot Type - Components

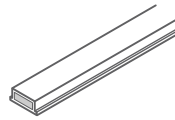
Pivot Block
Part No M 01



Pivot Bush
Part No M 02



Magnetic Strip



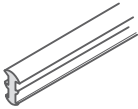
Part No M03/100 - 100mt reels
Part No M03/50 - 50mt reels
Part No M03/50 - H/Duty 50mt

Gasket Set
Part No M 04



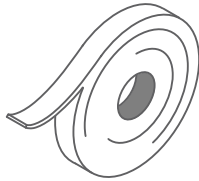
Pair, LH + RH

Glazing Wedge, clear
Part No 22



60mt reels

Double sided Foam Tape
Part No X 01



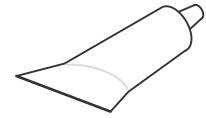
60mt reels
12.7mm wide x 1mm

Fasteners



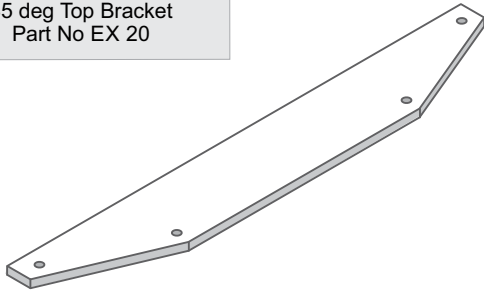
Frame/Pivot Corners - 8 x 38 Pan
Frame/Handle End - 8 x 38 C/S
Door/Pivot Corners - 6 x 25 Pan
Door/Handle End - 6 x 38 C/S
Return Frame - 6 x 38 C/S
Return to Door Frame - Pop 73AS44

Pivot Lube
Part No J/LUBEWT90



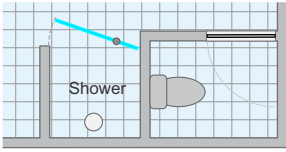
Lubricate all Pivots with WT90

45 deg Top Bracket
Part No EX 20

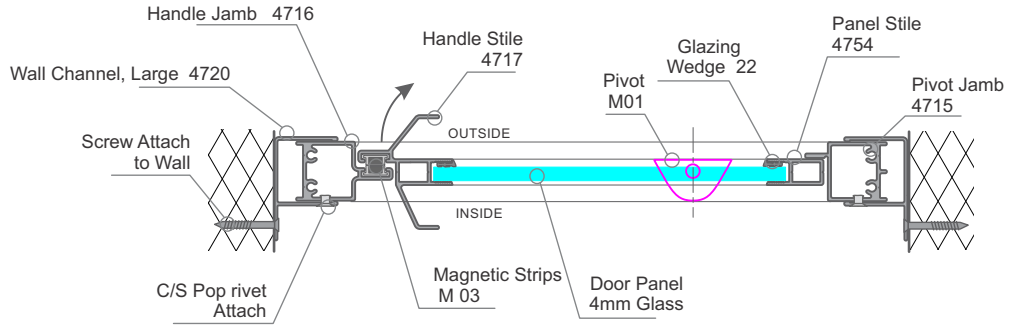


Juralco Magna Shower Door System - Mid Pivot Type - Typical Sections

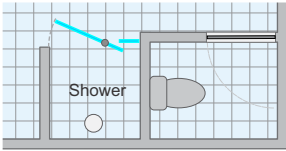
Typical Horizontal Cross Sections - Door only



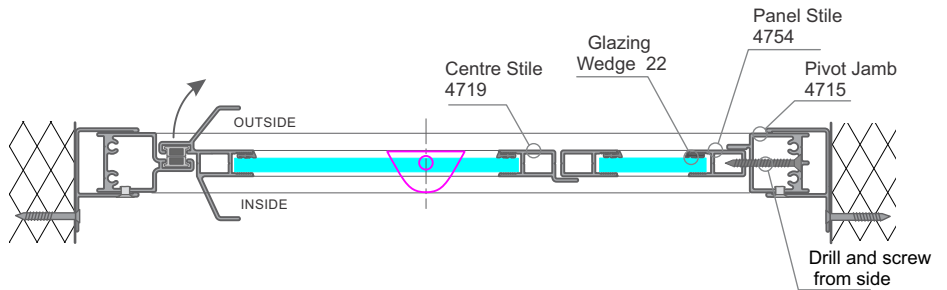
Juralco Magna Shower Door
Mid Pivot Door - no fixed panel



Door only - no Fixed Panel

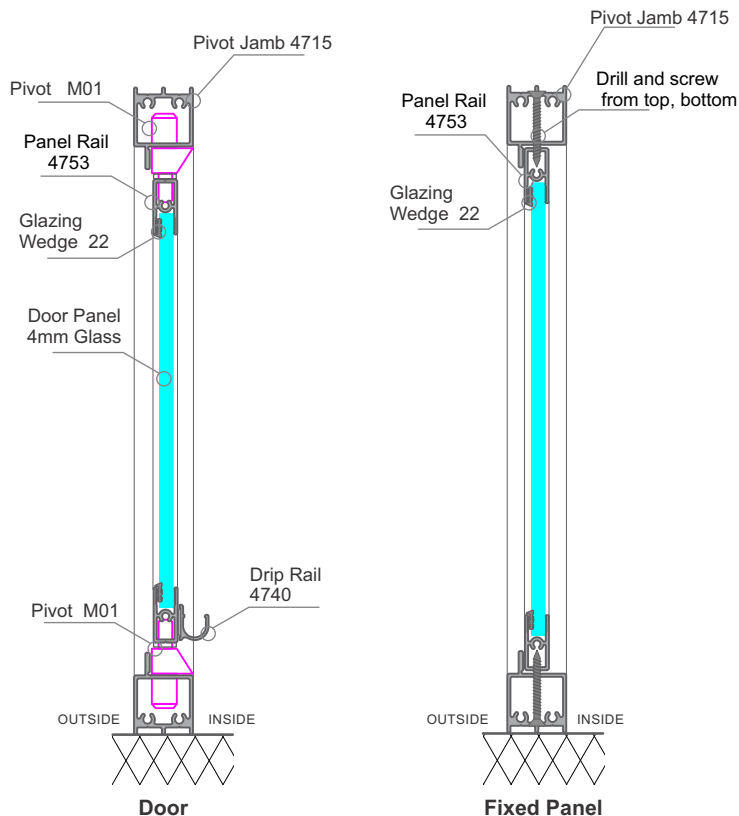


Juralco Magna Shower Door
Mid Pivot Door and fixed panel



Door and Fixed Panel

Typical Vertical Cross Section - Door only



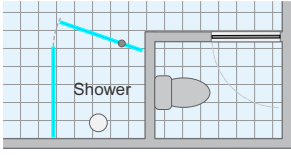
Door

Fixed Panel

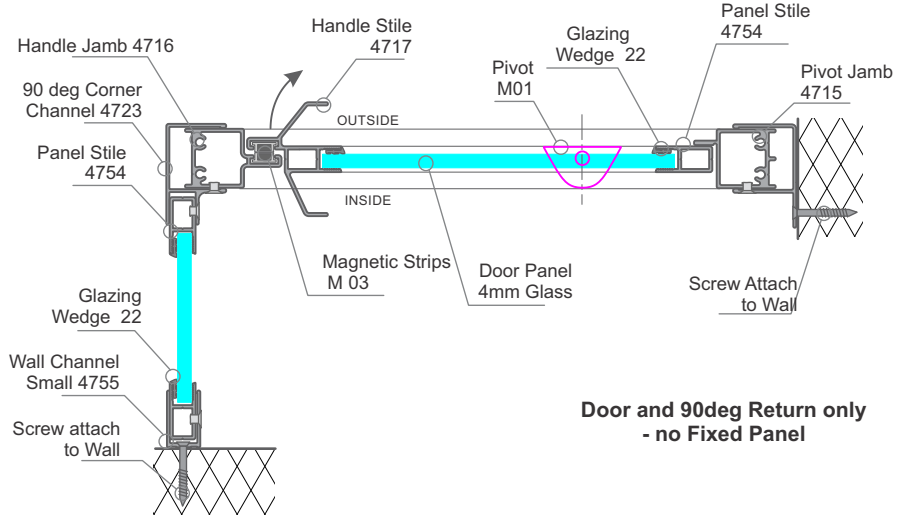


Juralco Magna Shower Door System - Mid Pivot Type - Typical Sections

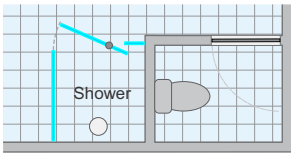
Typical Horizontal Cross Sections - Door + 90 deg Return



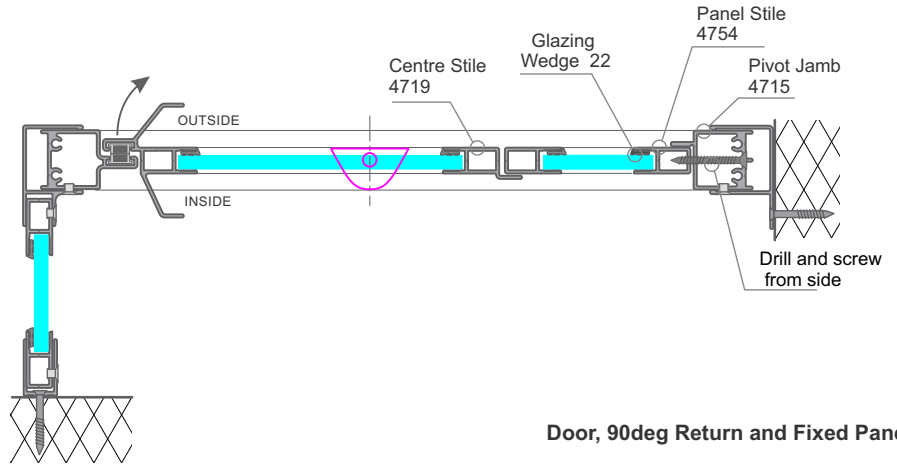
Juralco Magna Shower Door Mid Pivot Door, no fixed panel and 90 deg Return



Door and 90deg Return only - no Fixed Panel

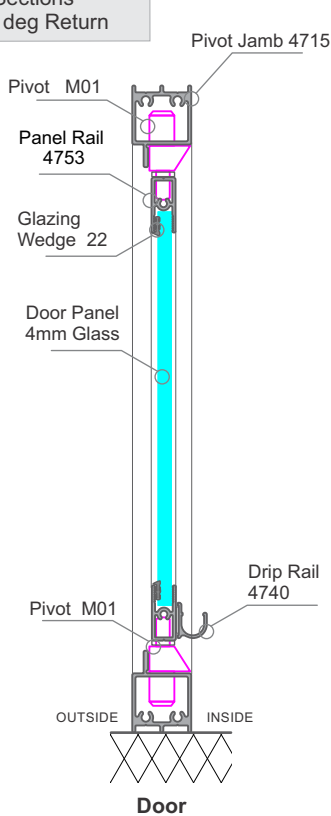


Juralco Magna Shower Door Mid Pivot Door and fixed panel and 90 deg Return

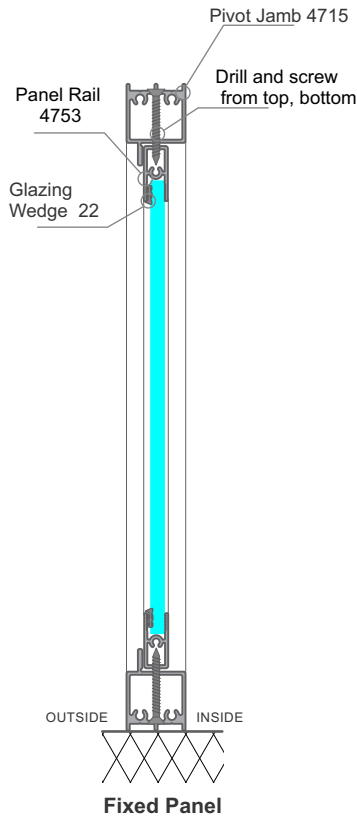


Door, 90deg Return and Fixed Panel

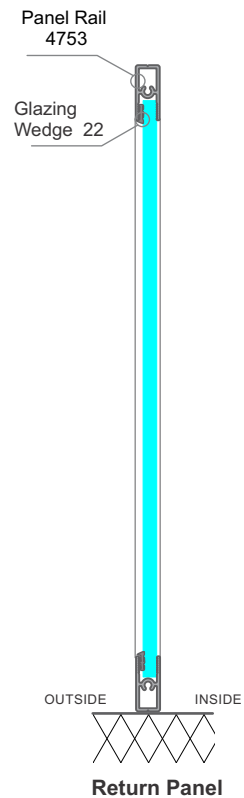
Typical Vertical Cross Sections - Door + 90 deg Return



Door



Fixed Panel

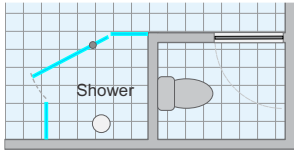


Return Panel

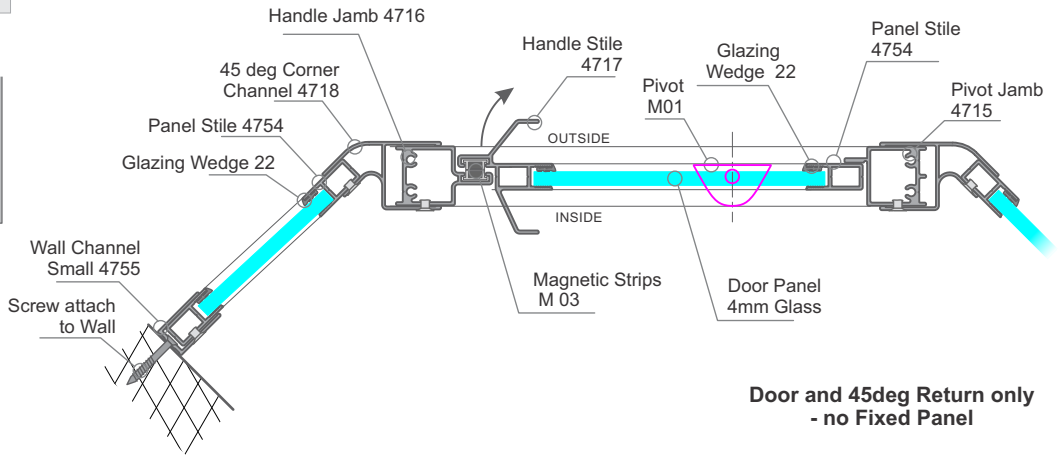


Juralco Magna Shower Door System - Mid Pivot Type - Typical Sections

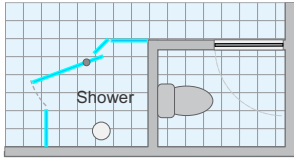
Typical Horizontal Cross Sections - Door + 45 deg Return



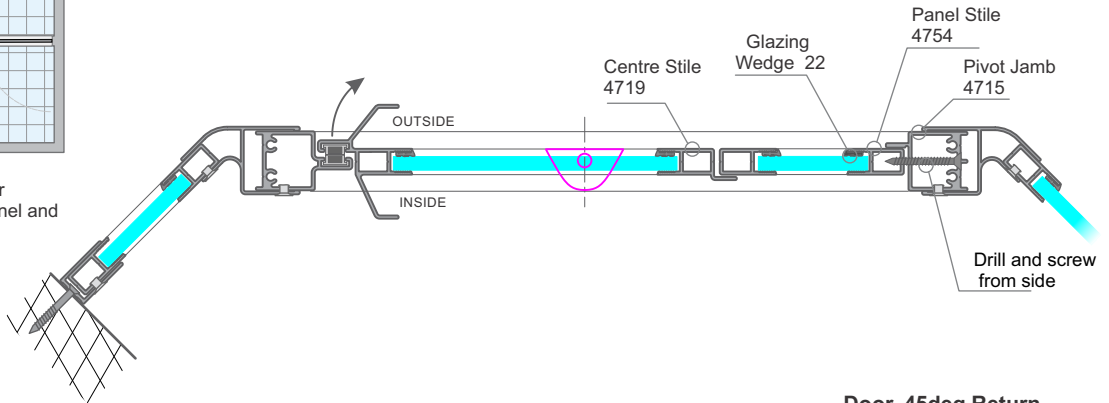
Juralco Magna Shower Door
Mid Pivot Door, no fixed panel and
2 x 45 deg Returns



Door and 45deg Return only
- no Fixed Panel

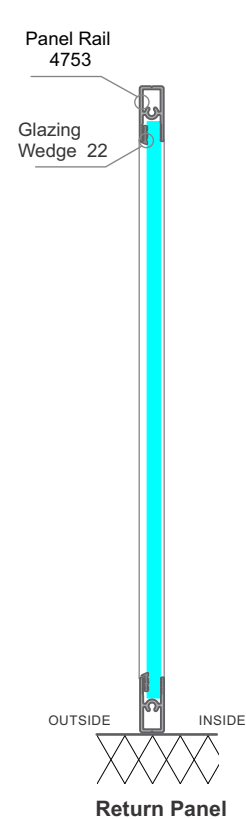
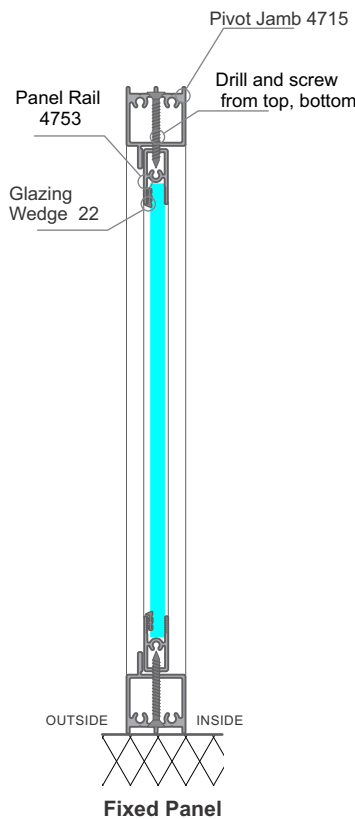
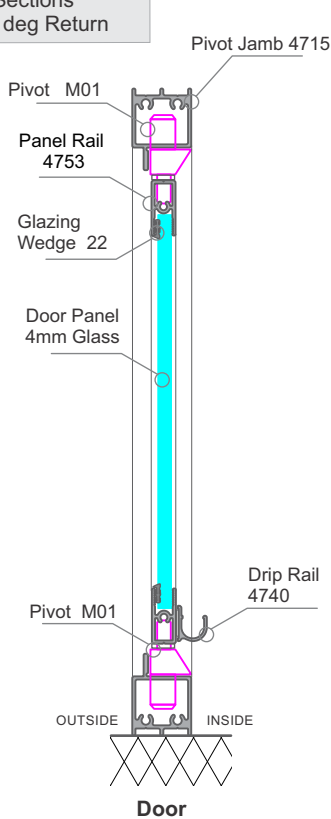


Juralco Magna Shower Door
Mid Pivot Door and fixed panel and
2 x 45 deg Returns



Door, 45deg Return
and Fixed Panel

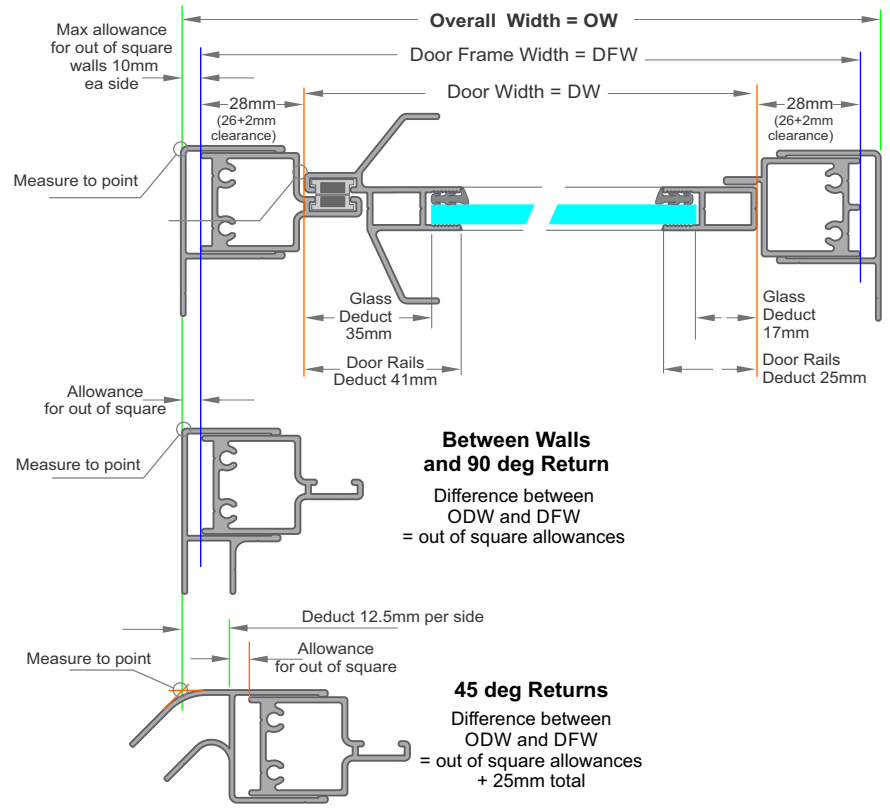
Typical Vertical Cross Sections - Door + 45 deg Return



Juralco Magna Shower Door System - Mid Pivot Type - Width Cutting Considerations

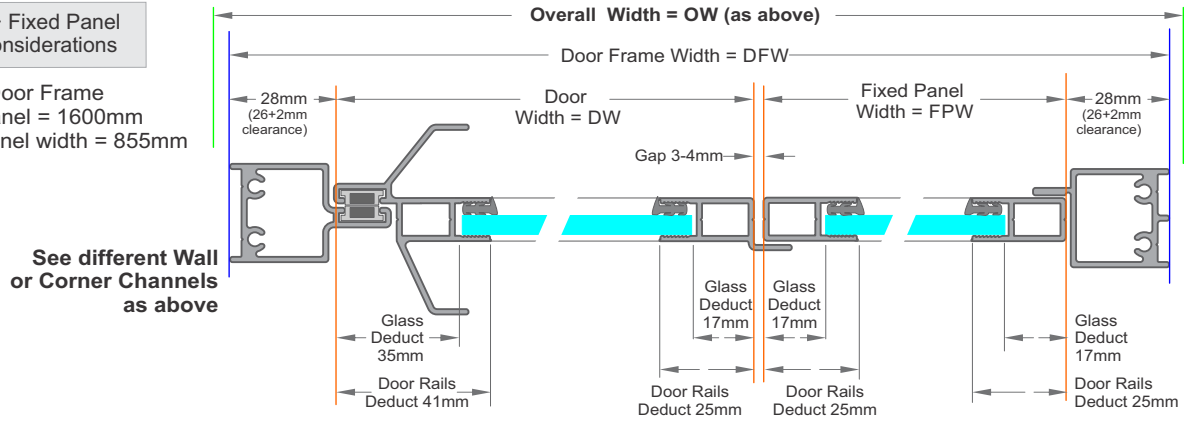
Mid Pivot Door only Width Cutting Considerations

Note - Maximum Door Frame width - no Fixed Panel = 910mm
= maximum Door Panel width of 855mm

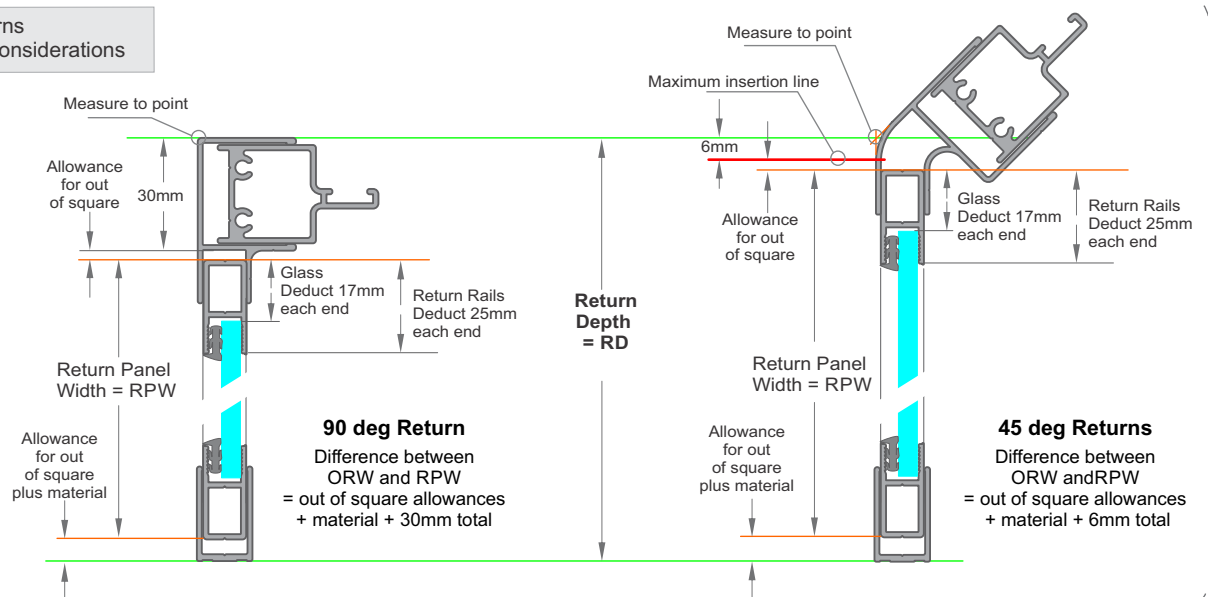


Mid Pivot Door + Fixed Panel Width Cutting Considerations

Note - Maximum Door Frame width incl Fixed Panel = 1600mm
Maximum Door Panel width = 855mm

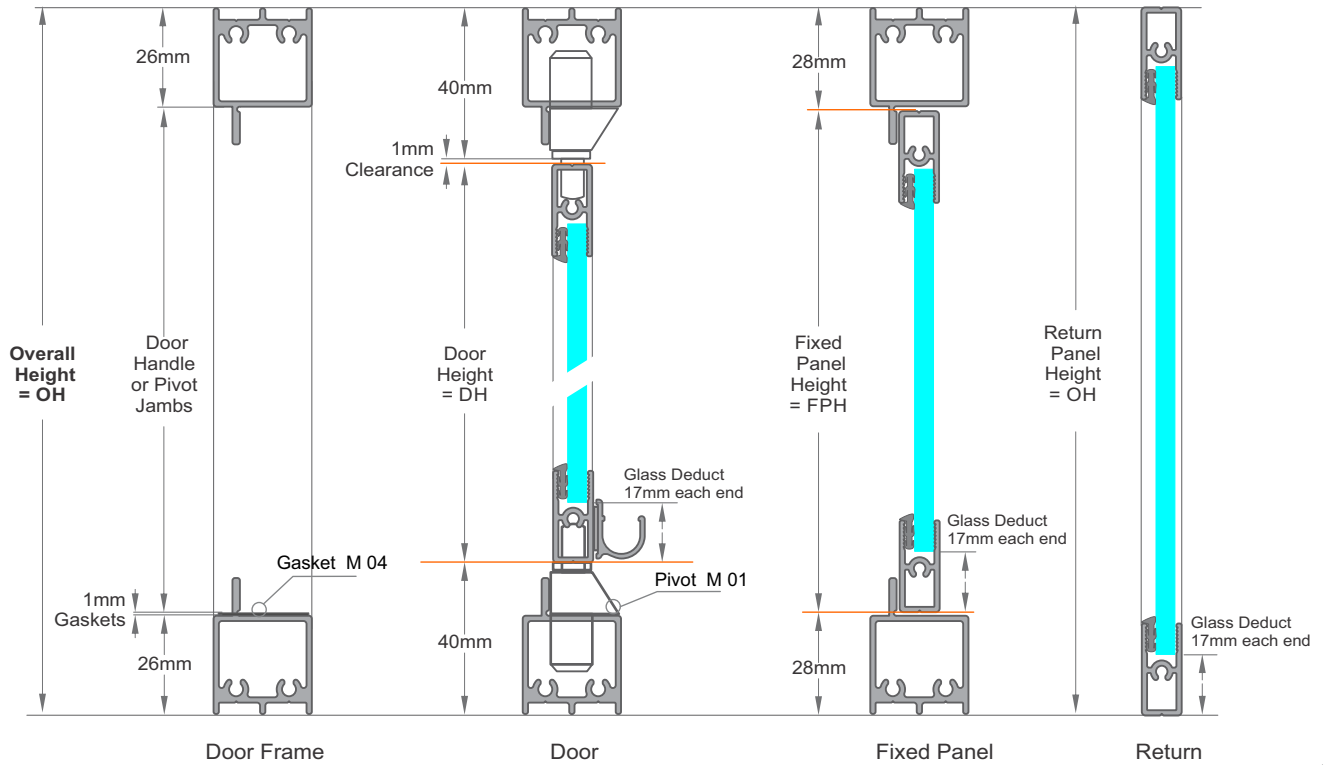


Returns Width Cutting Considerations



Juralco Magna Shower Door System - Mid Pivot Type - Height Cutting Considerations, Measuring

Mid Pivot - Panels Height Cutting Considerations



Magna Shower System Measuring

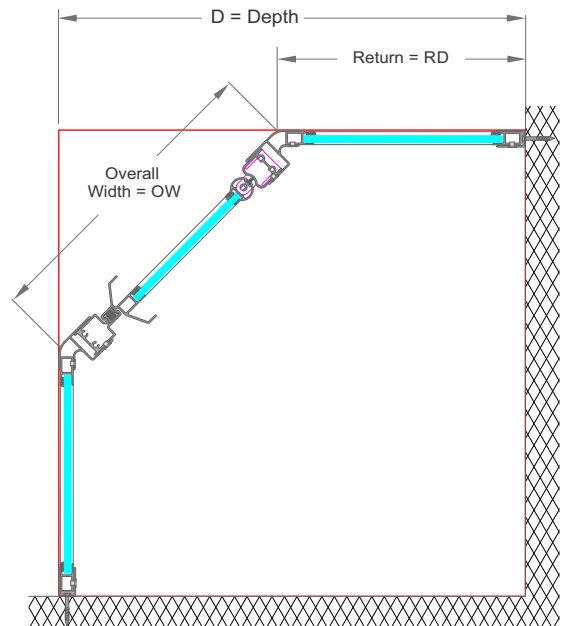
- Measure width top and bottom of the shower screen. Check for out of square walls and note the out of plumb measurements.
- Double check of measurements is recommended.
- Check position of taps and other fittings within shower recess for clearance. For shower enclosures with return panels establish points at corners where outside line of screen will finish. Measure to these points. Small off-cuts of corner sections are useful to assist in determining where shower enclosure is to finish.
- Out of plumb walls are accommodated within the adjustable wall channels.
- Decide on your Overall Widths and allowances then use the Cutting formula sheets.

Measuring, Selection 2 x 45 deg Returns

Table giving Return Depth RD, given Depth and Overall Width

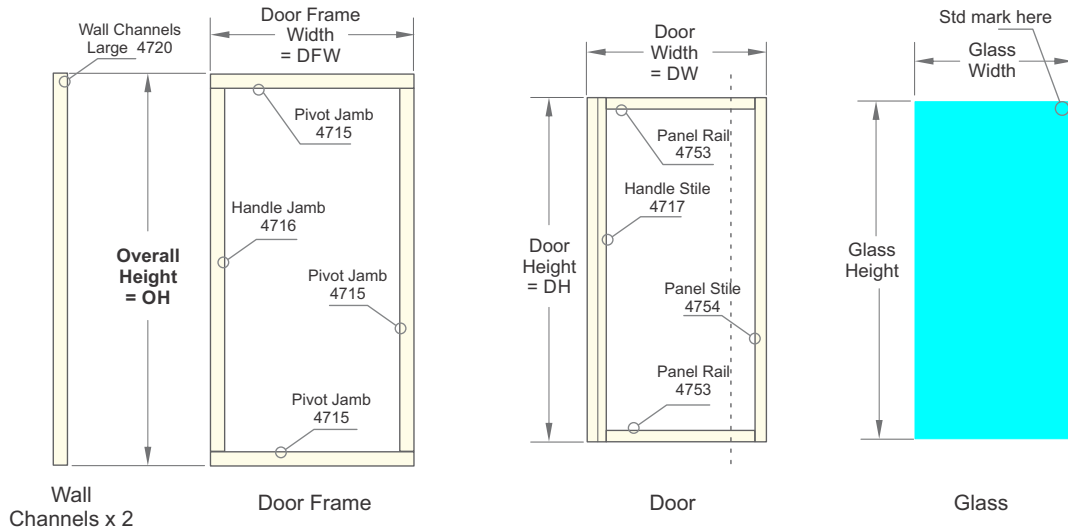
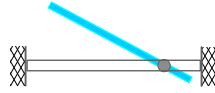
Note - If returns unequal calculate each return separately.

Depth mm	Overall Width = OW, mm								
	800	900	1000	1100	1200	1300	1400	1500	1600
1000	434	364	293	222	NA	NA	NA	NA	NA
1100	534	464	393	322	252	181	NA	NA	NA
1200	634	564	493	422	352	281	210	NA	NA
1300	734	664	593	522	452	381	310	240	NA
1400	834	764	693	622	552	481	410	340	269
1500	934	864	793	722	652	581	510	440	369
1600	1034	964	893	822	752	681	610	540	469
1700	1134	1064	993	922	852	781	710	640	569
1800	1234	1164	1093	1022	952	881	810	740	669
1900	1334	1264	1193	1122	1052	981	910	840	769
2000	1434	1364	1293	1222	1152	1081	1010	940	869



Juralco Magna Shower Door System - Mid Pivot Type - Cutting

Between Walls, Door only



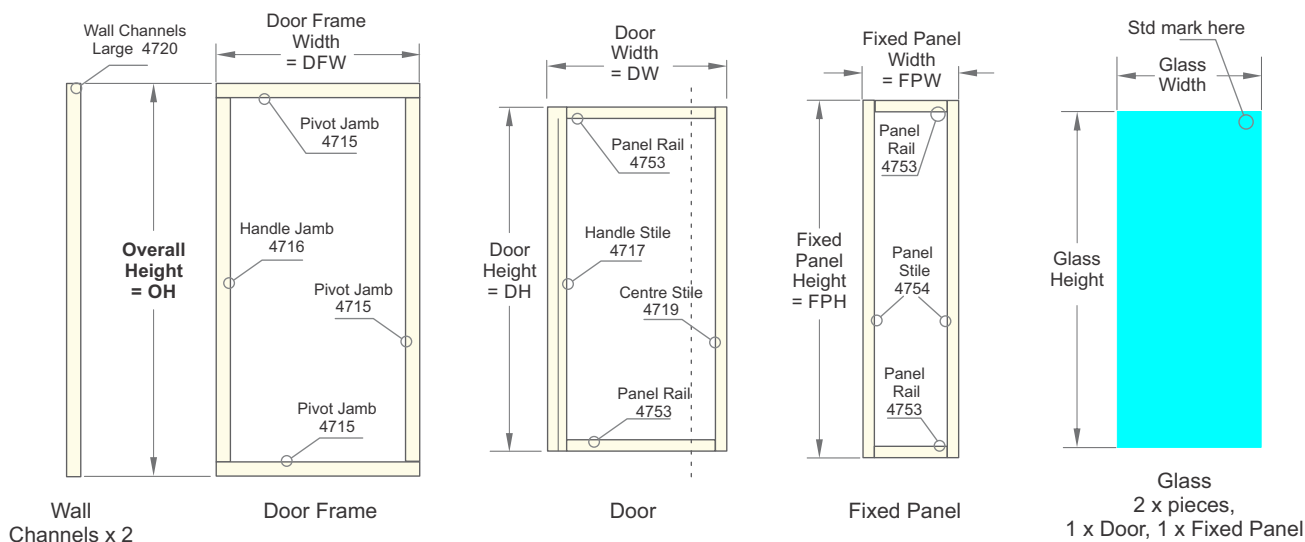
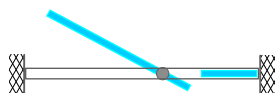
- 1 - After site measuring decide on the Overall width.
- 2 - Then allowances for out of plumb. Minimum total (incl both sides) = 3mm, maximum total = 20mm
- 3 - This will give the Door Frame Width as in 1 below
- 4 - Overall Height normally 1830mm or 1930mm

Between Walls - Mid Pivot Door only - No Fixed Panel. DFW maximum 910mm

		ITEM	PART	Formula, mm
1	Width	Door Frame Width - deduct allowances from the Overall Width		OH - 15 = DFW
2	Width	Door Frame - Pivot Jamb top and bottom	4715	DFW
3	Width	Door width = DW		DFW - 56 = DW
4	Width	Door - Panel Rails top and bottom	4753	DW - 66
5	Width	Door - Glass	4mm	DW - 52
<hr/>				
1	Height	Door Frame Height = Overall Door Height		OH
2	Height	Wall Channel, large	4720	OH
3	Height	Door Frame - Handle Jamb	4716	OH - 53
4	Height	Door Frame - Pivot Jamb	4715	OH - 53
5	Height	Door height = DH		OH - 81 = DH
6	Height	Door - Handle Stile	4717	DH
7	Height	Door - Panel Stile	4754	DH
8	Height	Door - Glass	4mm	DH - 34

Juralco Magna Shower Door System - Mid Pivot Type - Cutting

Between Walls, Door and Fixed Panel



- Table giving suggested Door Widths (DW) and Fixed Panel Widths (FPW) for various Door Frame Widths.
- Added together they must be 60mm less than the Door Frame Width

- 1 - After site measuring decide on the Overall width,
- 2 - Then allowances for out of plumb.
Minimum total (incl both sides) = 3mm,
Maximum total = 20mm
- 3 - This will give the Door Frame Width as in 1 below.
- 4 - Then decide on the appropriate Door and Fixed Panel widths using the table opposite
- 5 - Overall Height normally 1830mm or 1930mm

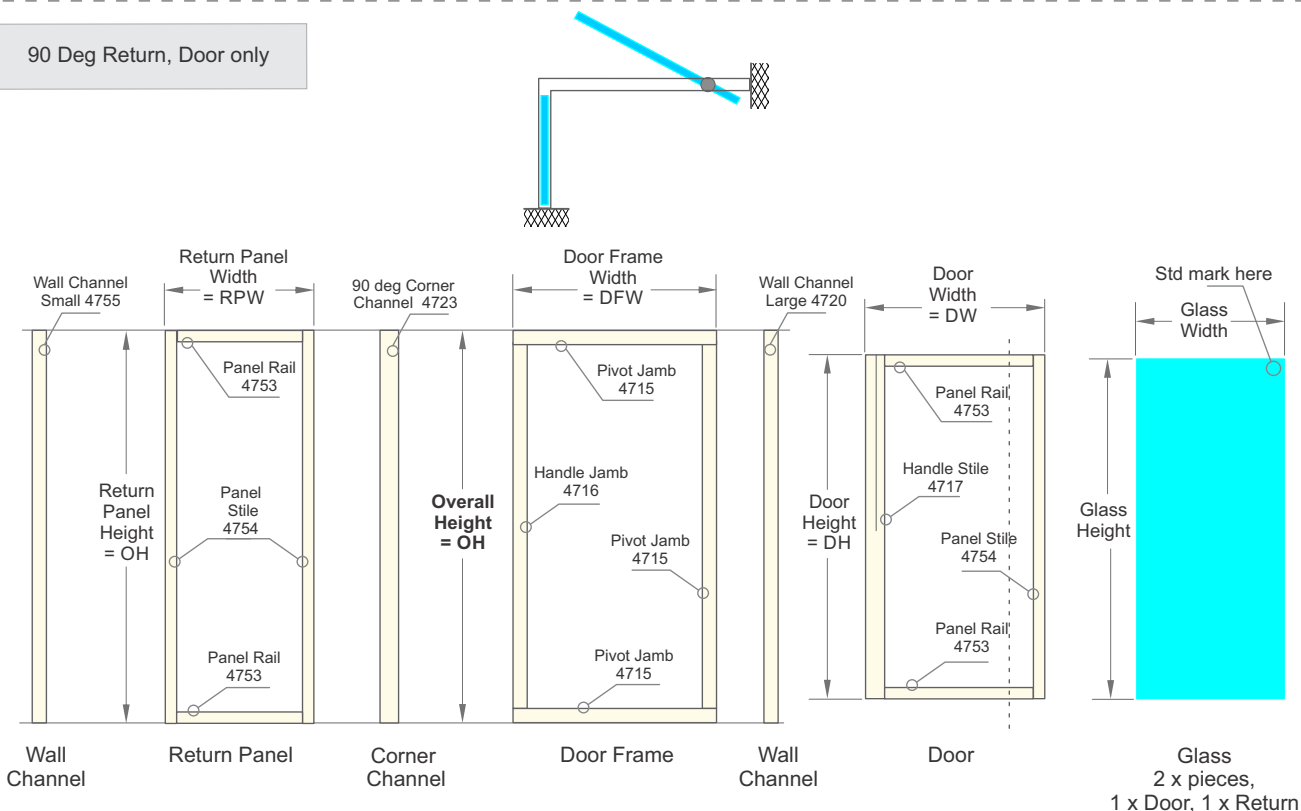
		Door Frame Width = DFW, mm								
Panels	DW	800	900	1000	1100	1200	1300	1400	1500	1600
	DW	740	840	740	840	840	840	840	840	840
	FPW	NA	NA	200	200	300	400	500	600	700
	Total	740	840	940	1040	1140	1240	1340	1440	1540

Between Walls - Mid Pivot Door and Fixed Panel. DFW maximum 1600mm

ITEM		PART	Formula, mm
1	Width	Door Frame Width - deduct allowances from the Overall Width	$OH - 15 = DFW$
2	Width	Door Frame - Pivot Jamb top and bottom	DFW
3	Width	Door width = DW. Choose a value from table - say 840mm	$840 = DW$
4	Width	Door - Panel Rails top and bottom	$DW - 66$
5	Width	Door - Glass	$DW - 52$
6	Width	Fixed Panel width = FPW	$DFW - DW - 59 = FPW$
7	Width	Fixed Panel - Panel Rails top and bottom	$FPW - 50$
8	Width	Fixed Panel Glass	$FPW - 34$
1	Height	Door Frame Height = Overall Height	OH
2	Height	Wall Channel, large	4720
3	Height	Door Frame - Handle Jamb	4716
4	Height	Door Frame - Pivot Jamb	4715
5	Height	Door height = DH	$OH - 81 = DH$
6	Height	Door - Handle Stile	4717
7	Height	Door - Centre Stile	4719
8	Height	Door - Glass	4mm
9	Height	Fixed Panel height = FPH	$OH - 56 = FPH$
10	Height	Fixed Panel - Panel Stile	4753
11	Height	Fixed Panel Glass	4mm

Juralco Magna Shower Door System - Mid Pivot Type - Cutting

90 Deg Return, Door only



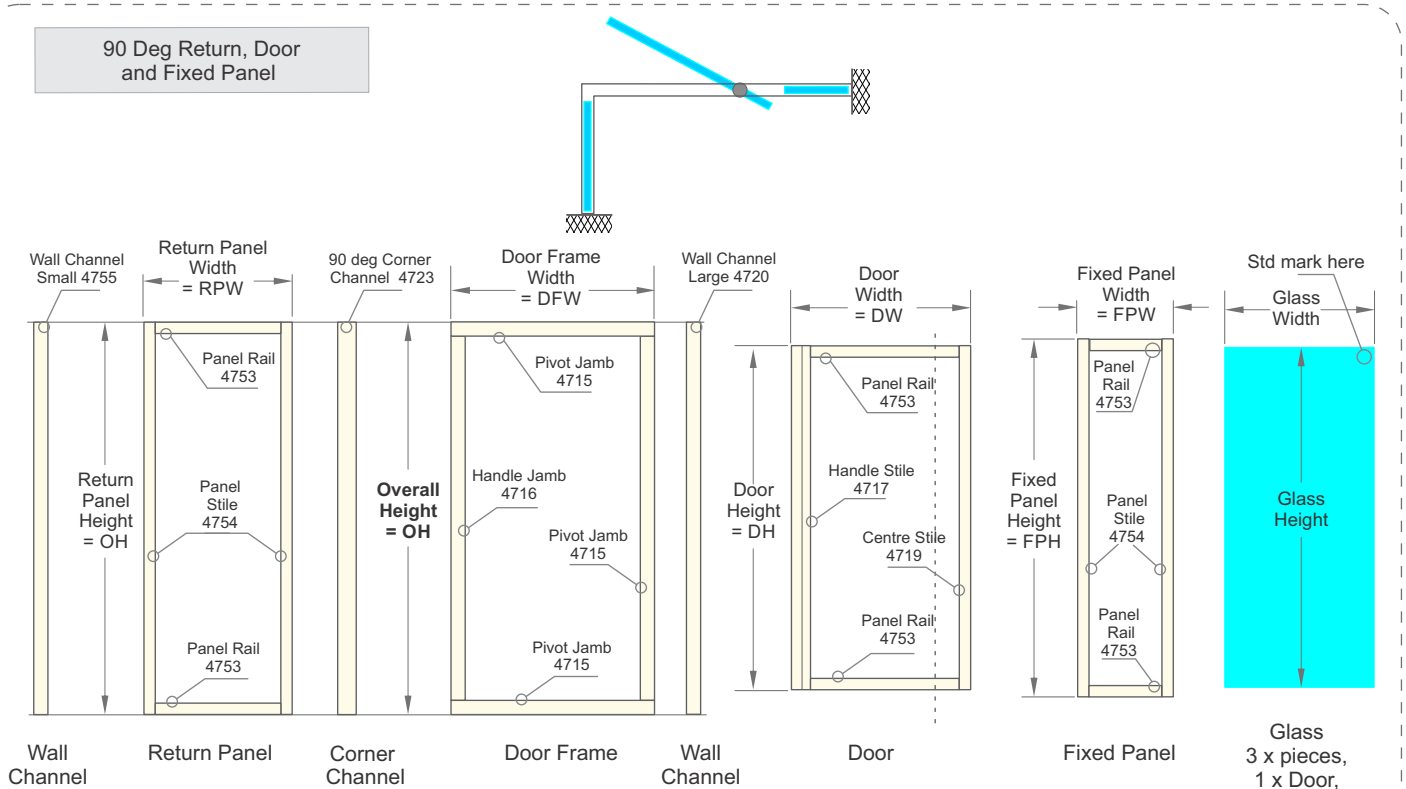
- 1 - After site measuring decide on the Overall width.
- 2 - Then allowances for out of plumb. Minimum total (incl both sides) = 3mm, maximum total = 20mm
- 3 - This will give the Door Frame Width as in 1 below
- 4 - Same procedure for Return panel
- 5 - Overall Height normally 1830mm or 1930mm

90 Deg Return - Mid Pivot Door only - No Fixed Panel. DFW maximum 910mm

	ITEM	PART	Formula, mm
1	Width	Door Frame Width - deduct allowances from the Overall Width	OW - 15 = DFW
2	Width	Door Frame - Pivot Jamb top and bottom	DFW
3	Width	Door width = DW	DFW - 56 = DW
4	Width	Door - Panel Rails top and bottom	DW - 66
5	Width	Door - Glass	DW - 52
6	Width	Return Panel Width - deduct allowances from the Return Depth	RD - 40 = RPW
7	Width	Return Panel - Rails top and bottom	RPW - 50
8	Width	Return Panel - Glass	RPW - 34

1	Height	Door Frame Height = Overall Height	OH
2	Height	Wall Channels, large, small	4720, 4755 OH
3	Height	90 deg Corner Channel	4723 OH
4	Height	Door Frame - Handle Jamb	4716 OH - 53
5	Height	Door Frame - Pivot Jamb	4715 OH - 53
6	Height	Door height = DH	OH - 81 = DH
7	Height	Door - Handle Stile	4717 DH
8	Height	Door - Panel Stile	4754 DH
9	Height	Door - Glass	4mm DH - 34
10	Height	Return Panel - Panel Stile	4754 OH
11	Height	Return Panel - Glass	4mm OH - 34

Juralco Magna Shower Door System - Mid Pivot Type - Cutting



Glass
3 x pieces,
1 x Door,
1 x Fixed panel
1 x Return

- 1 - After site measuring decide on the Overall width,
- 2 - Then allowances for out of plumb.
Minimum total (incl both sides) = 3mm,
Maximum total = 20mm
- 3 - This will give the Door Frame Width as in 1 below.
- 4 - Then decide on the appropriate Door
and Fixed Panel widths using the table opposite
- 5 - Same procedure for Return Panel
- 6 - Overall Height normally 1830mm or 1930mm

- Table giving suggested Door Widths (DW)
and Fixed Panel Widths (FPW) for various Door Frame Widths.
- Added together they must be 60mm less than the Door Frame Width

		Door Frame Width = DFW, mm								
Panels		800	900	1000	1100	1200	1300	1400	1500	1600
DW		740	840	740	840	840	840	840	840	840
FPW		NA	NA	200	200	300	400	500	600	700
Total		740	840	940	1040	1140	1240	1340	1440	1540

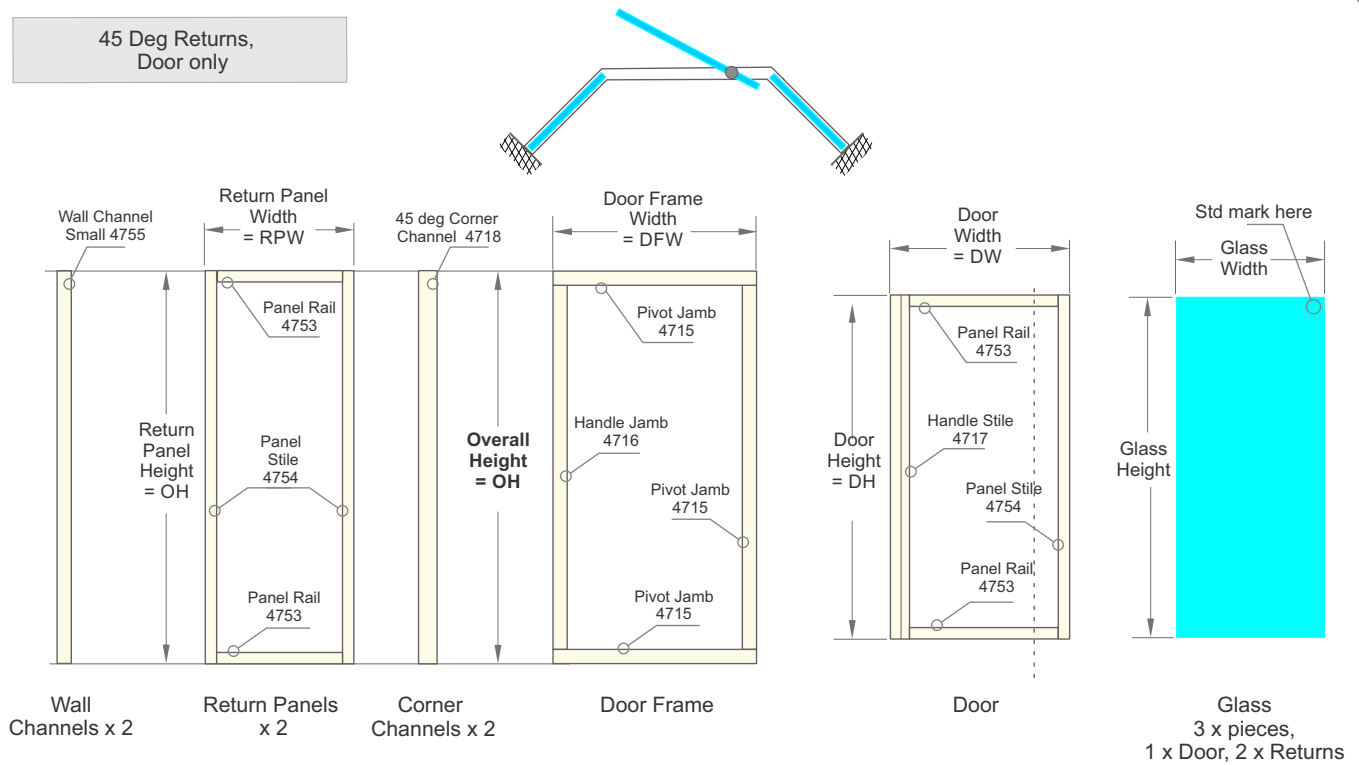
90 Deg Return - Mid Pivot Door and Fixed Panel. DFW maximum 1600mm

ITEM		PART	Formula, mm
1	Width Door Frame Width - deduct allowances from the Overall Width		$OW - 15 = DFW$
2	Width Door Frame - Pivot Jamb top and bottom	4715	DFW
3	Width Door width = DW. Choose a value from table - say 840mm		$840 = DW$
4	Width Door - Panel Rails top and bottom	4753	$DW - 66$
5	Width Door - Glass	4mm	$DW - 52$
6	Width Fixed Panel width = FPW		$DFW - DW - 59 = FPW$
7	Width Fixed Panel - Panel Rails top and bottom	4753	$FPW - 50$
8	Width Fixed Panel - Glass	4mm	$FPW - 34$
9	Width Return Panel Width - deduct allowances from the Return Depth		$RD - 40 = RPW$
10	Width Return Panel - Rails top and bottom	4753	$RPW - 50$
11	Width Return Panel - Glass	4mm	$RPW - 34$

1	Height Door Frame Height = Overall Height		OH
2	Height Wall Channels, large, small	4720, 4755	OH
3	Height 90 deg Corner Channel	4723	OH
4	Height Door Frame - Handle Jamb	4716	$OH - 53$
5	Height Door Frame - Pivot Jamb	4715	$OH - 53$
6	Height Door height = DH		$OH - 81 = DH$
7	Height Door - Handle Stile	4717	DH
8	Height Door - Centre Stile	4719	DH
9	Height Door - Glass	4mm	$DH - 34$
10	Height Fixed Panel height = FPH		$OH - 56 = FPH$
11	Height Fixed Panel - Panel Stile	4753	FPH
12	Height Fixed Panel - Glass	4mm	$FPH - 34$
13	Height Return - Panel stile	4754	OH
14	Height Return - Panel Glass	4mm	$OH - 34$

Juralco Magna Shower Door System - Mid Pivot Type - Cutting

45 Deg Returns,
Door only



- 1 - After site measuring decide on the Overall width.
- 2 - Then allowances for out of plumb. Minimum total (incl both sides) = 3mm, maximum total = 20mm
- 3 - This will give the Door Frame Width as in 1 below
- 4 - Same procedure for Return panel
- 5 - Overall Height normally 1830mm or 1930mm

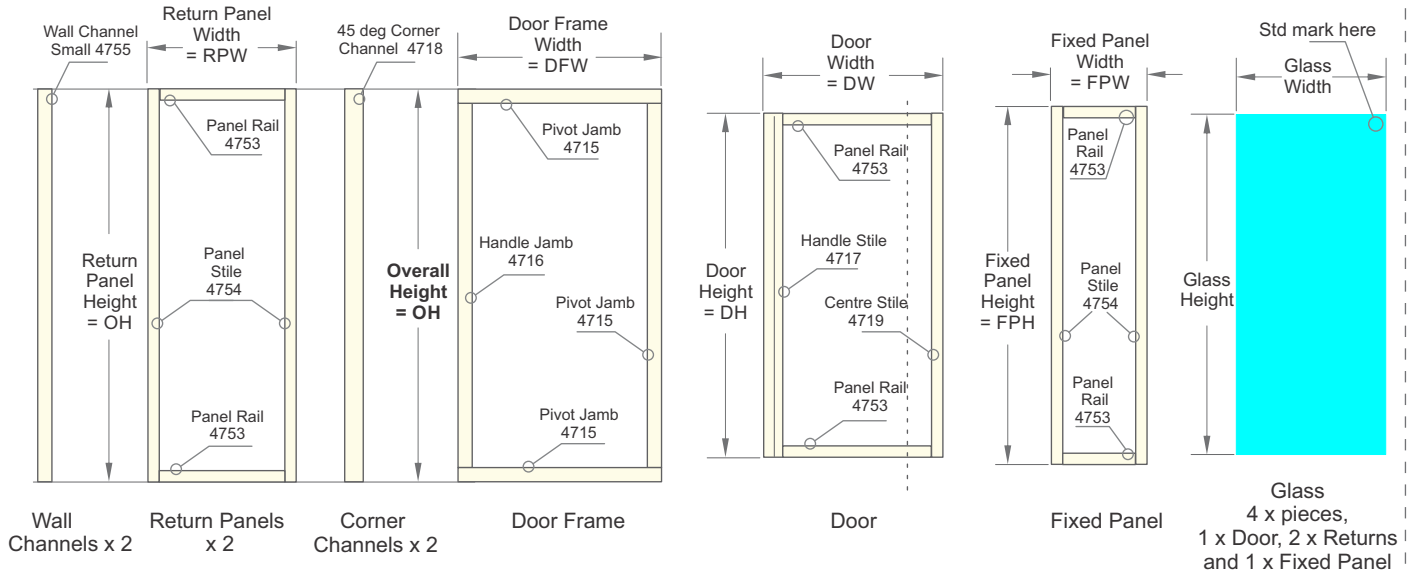
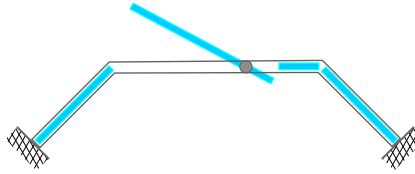
45 Deg Returns - Mid Pivot Door only - No Fixed Panel. DFW maximum 910mm

	ITEM	PART	Formula, mm
1	Width Door Frame Width - deduct allowances from the Overall Width		OW - 65 = DFW
2	Width Door Frame - Pivot Jamb top and bottom	4715	DFW
3	Width Door width = DW		DFW - 56 = DW
4	Width Door - Panel Rails top and bottom	4753	DW - 66
5	Width Door - Glass	4mm	DW - 52
6	Width Return Panel Width - deduct allowances from the Return Depth		RD - 15 = RPW
7	Width Return Panel - Rails top and bottom	4753	RPW - 50
8	Width Return Panel - Glass	4mm	RPW - 34

1	Height Door Frame Height = Overall Height		OH
2	Height Wall Channels, small	4755	OH
3	Height 45 deg Corner Channel	4718	OH
4	Height Door Frame - Handle Jamb	4716	OH - 53
5	Height Door Frame - Pivot Jamb	4715	OH - 53
6	Height Door height = DH		OH - 81 = DH
7	Height Door - Handle Stile	4717	DH
8	Height Door - Panel Stile	4754	DH
9	Height Door - Glass	4mm	DH - 34
10	Height Return Panel - Panel Stile	4754	OH
11	Height Return Panel - Glass	4mm	OH - 34

Juralco Magna Shower Door System - Mid Pivot Type - Cutting

45 Deg Returns, Door and Fixed Panel



Glass
4 x pieces,
1 x Door, 2 x Returns
and 1 x Fixed Panel

- 1 - After site measuring decide on the Overall width,
- 2 - Then allowances for out of plumb.
Minimum total (incl both sides) = 3mm,
Maximum total = 20mm
- 3 - This will give the Door Frame Width as in 1 below.
- 4 - Then decide on the appropriate Door
and Fixed Panel widths using the table opposite
- 5 - Same procedure for Return Panel
- 6 - Overall Height normally 1830mm or 1930mm

- Table giving suggested Door Widths (DW)
and Fixed Panel Widths (FPW) for various Door Frame Widths.
- Added together they must be 60mm less than the Door Frame Width

Panels	Door Frame Width = DFW, mm								
	800	900	1000	1100	1200	1300	1400	1500	1600
DW	740	840	740	840	840	840	840	840	840
FPW	NA	NA	200	200	300	400	500	600	700
Total	740	840	940	1040	1140	1240	1340	1440	1540

45 Deg Returns - Mid Pivot Door and Fixed Panel. DFW maximum 1600mm

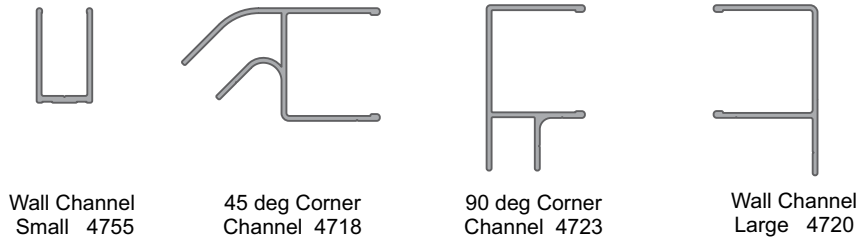
	ITEM	PART	Formula, mm
1	Width Door Frame Width - deduct allowances from the Overall Width		$OW - 65 = DFW$
2	Width Door Frame - Pivot Jamb top and bottom	4715	DFW
3	Width Door width = DW. Choose a value from table - say 840mm		$840 = DW$
4	Width Door - Panel Rails top and bottom	4753	$DW - 66$
5	Width Door - Glass	4mm	$DW - 52$
6	Width Fixed Panel width = FPW		$DFW - DPW - 59 = FPW$
7	Width Fixed Panel - Panel Rails top and bottom	4753	$FPW - 50$
8	Width Fixed Panel Glass	4mm	$FPW - 34$
9	Width Return Panel Width - deduct allowances from the Return Depth		$RD - 15 = RPW$
10	Width Return Panel - Rails top and bottom	4753	$RPW - 50$
11	Width Return Panel - Glass	4mm	$RPW - 34$

1	Height Door Frame Height = Overall Height		OH
2	Height Wall Channels, small	4755	OH
3	Height 45 deg Corner Channel	4718	OH
4	Height Door Frame - Handle Jamb	4716	$OH - 53$
5	Height Door Frame - Pivot Jamb	4715	$OH - 53$
6	Height Door height = DH		$OH - 81 = DH$
7	Height Door - Handle Stile	4717	DH
8	Height Door - Centre Stile	4719	DH
9	Height Door - Glass	4mm	$DH - 34$
10	Height Fixed Panel height = FPH		$OH - 56 = FPH$
11	Height Fixed Panel - Panel Stile	4753	FPH
12	Height Fixed Panel - Glass	4mm	$FPH - 34$
13	Height Return Panel - Panel Stile	4754	OH
14	Height Return Panel - Glass	4mm	$OH - 34$

Juralco Magna Shower Door System - Mid Pivot Type - Machining

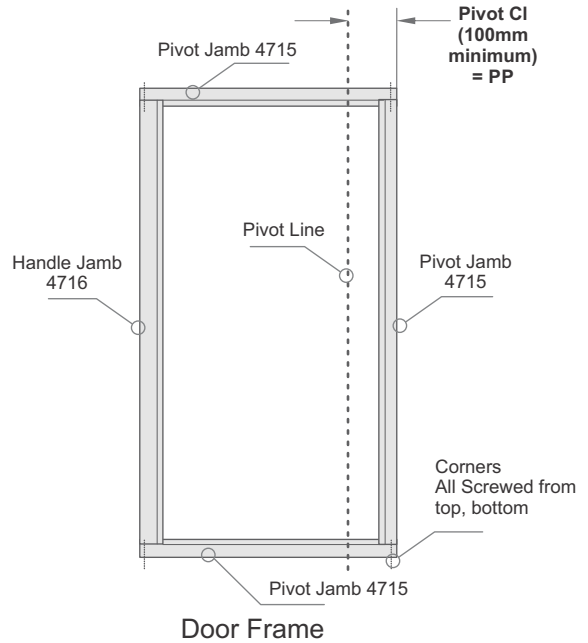
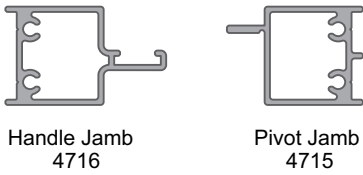
Wall and Corner Sections Machining

- All cut square
- All drilled to suit on site
- Screw to wall - 5mm holes
- Pop rivet countersunk 44 - 3.2 dia holes



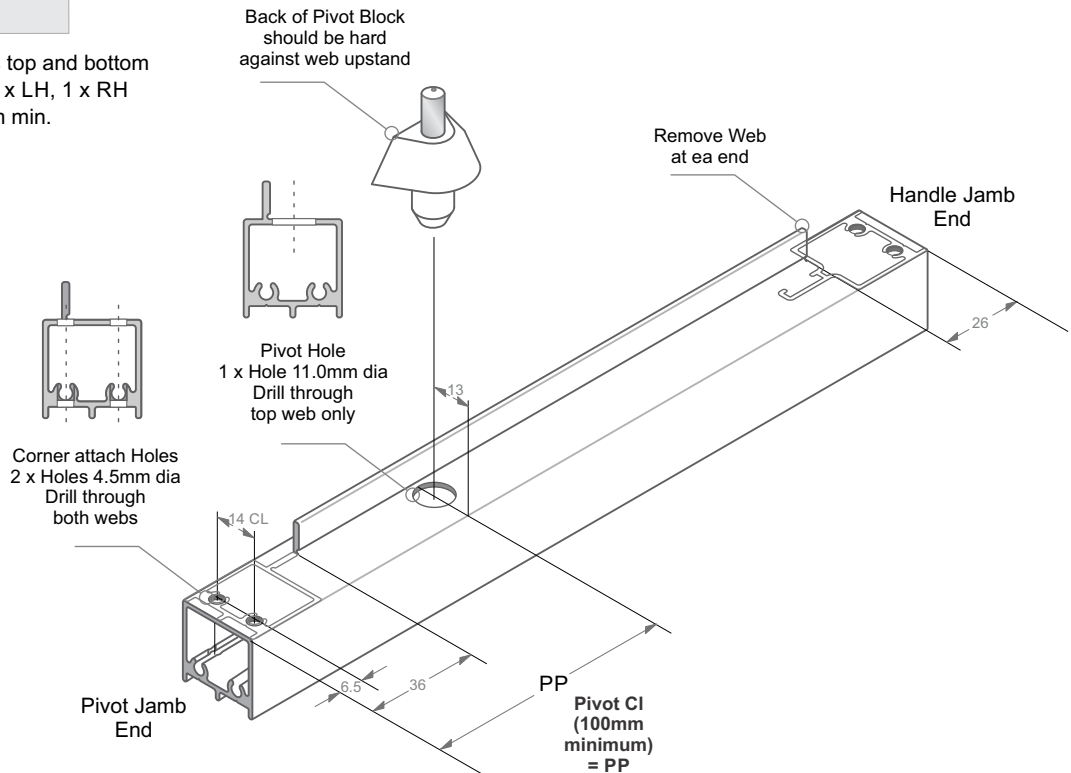
Door Frame Machining

- All cut square
- No Machining for Handle Jamb and Vertical Pivot Jamb
- Machining for Horizontal Pivot Jamb as below



Door Frame - Top, Bottom Jamb Machining

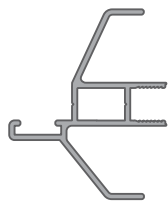
- Machining for Pivot Jamb top and bottom
- Identical machining, but 1 x LH, 1 x RH
- Choose PP to suit, 100mm min.



Juralco Magna Shower Door System - Mid Pivot Type - Machining

Door Machining

- All cut square
- Machining for all extrusions below



Handle Stile
4717



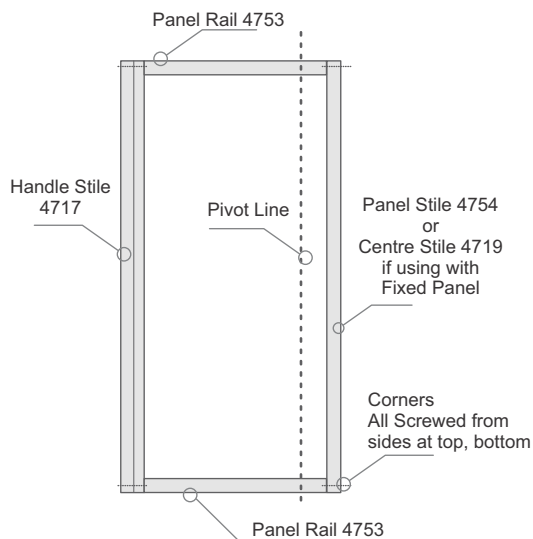
Panel Rail
4753



Panel Stile
4754



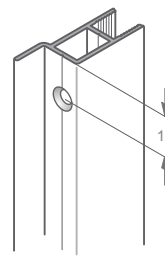
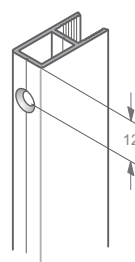
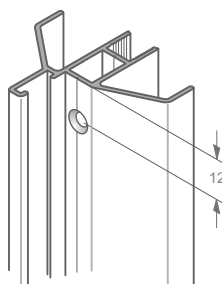
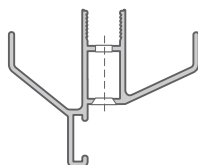
Centre Stile
Part no 4719



Door Panel

Door - Stiles Machining

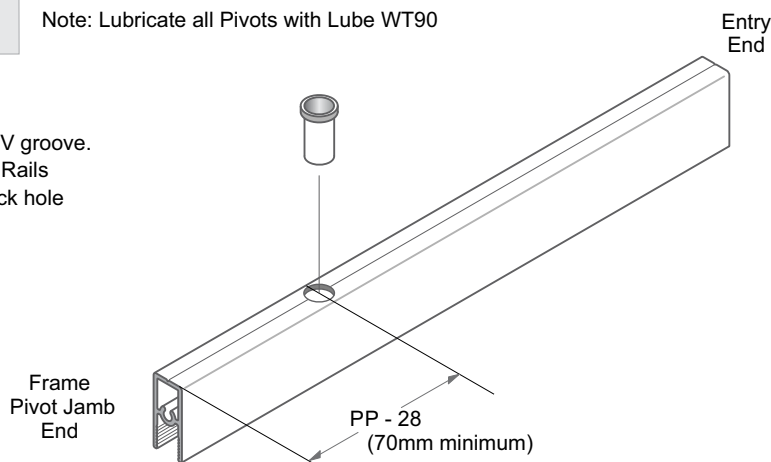
- All Corner attach Holes
- 2 x Holes 4.5mm dia, Outer one C/sink
- Drill through both webs. Drill to V groove
- Identical holes Top and Bottom of Stiles



Door - Rails Machining

Note: Lubricate all Pivots with Lube WT90

- Pivot Bush Hole
- Hole 8.1mm dia
- Drill through both webs. Drill to V groove.
- Identical holes Top and Bottom Rails
- This hole must match Pivot Block hole



JURALCO

www.juralco.co.nz ph (09) 478 8018

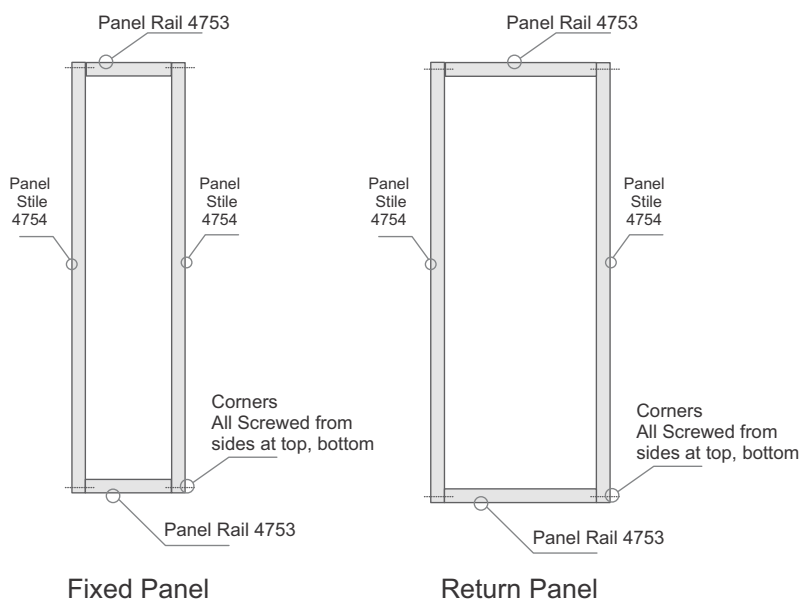
Juralco Magna Shower Door Systems

Issue 1/17
Page 18

Juralco Magna Shower Door System - Mid Pivot Type - Machining

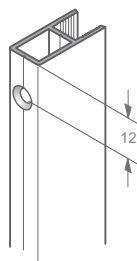
Fixed, Return Panel - Rails

- All cut square
- Both Panels identical construction
- No Machining for Panel Rails
- Machining for Panel Stiles as below



Fixed, Return Panel - Stiles Machining

- All Corner attach Holes
- 2 x Holes 4.5mm dia, Outer one C/sink
- Drill through both webs. Drill to V groove
- Identical holes Top and Bottom of Stiles



Juralco Magna Shower Door System - Mid Pivot Type - Assembly, Installation

Manufacturing

Note: Lubricate all Pivots with Lube WT90

- 1 - Inspect all extrusions for damage, surface defects. Assemble all necessary components. Ensure workplace is clean.
- 2 - Cut all aluminium sections to the correct lengths. Machine head and sill members of pivot frame using the press tooling.
- 3 - Drill Door Frame (top and bottom) Jamb 4715 accurately for pivot block. Drill attach holes and machine web.
- 4 - Drill Door Panel stiles. Drill Door Panel top and bottom rails 4753 for pivot bush MO 2.
- 5 - Determine that pivot is located at the correct end of the frame and that position of pivot is in accordance with site dimensions to ensure that pivot end of the door will not interfere with taps and other projections within the shower area.
- 6 - Slide magnetic strip MO3 into Handle Jamb 4716. Slide magnetic strip MO3 into Door Handle stile 4717 making sure that the strip is inserted in the right way so that the magnetic strips attract each other. If inserted the wrong way magnetic strips will repel each other. Crimp end of pivot door stile to secure magnetic strip in place.
- 7 - Glaze door and panels, on appropriate workbench. Use glazing wedge 22 on the outside of all panels.
- 8 - After glazing, attach pivot door blocks MO1 to Door Frame (top and bottom rails).
- 9 - Assemble Door Frame around Door Panel. Ensure gasket set MO4 is positioned between the Door Frame bottom Pivot Jamb and the vertical Handle /Pivot Jamb. Align pivot pins into pivot assemblies. Fasten frame together with 8 gauge screws. Seal bottom joints with silicone, screw up tightly.
- 10 - Assemble the Fixed Panel (if needed) and screw attach to Door Frame.
- 11 - Assemble Return Panels (if needed).
- 12 - Assemble in factory the total unit before delivery to site. The fit and operation of the pivot door should be checked before leaving the factory to ensure correct operation.
- 13 - Ensure that the appropriate wall and corner channels for installation are fitted loose onto the frame jambs.
- 14 - Return panels on 90 degree and 45 degree shower enclosures are glazed in the standard format as for the pivot door panel.
- 15 - Clean off all fingermarks, wrap and pack all components.
- 16 - Strap assembly together to prevent door opening during transport.

Installation

Note: Prior to delivering to site, unpack and check all items

Note: Lubricate all Pivots with Lube WT90

General

- 1 - Unpack, inspect for damage. Check Door (and Returns) are correct ones for this job. Assemble tools.
- 2 - To reduce any risk of damage to the door assembly it is advisable to carry the pivot door assembly on its edge with pivot end at the top.
- 3 - Use a colour co-ordinated NG Silicone sealant for sealing of shower enclosures.
- 4 - The wall channel system used in the Magna shower screen allows for some degree of out of square openings.
- 5 - Fixing to wall to be 25mm x 6g stainless steel screws or wall toggles where appropriate. Use Screw cap covers to cover seen screws.

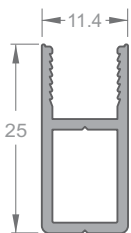
Installation of shower enclosure between two walls

- 1 - Align the first Wall Channel 4720 against the wall and plumb to ensure that it is vertical. Fasten to wall. Fix at top, bottom and center. Seal behind wall channel before fastening.
- 2 - Loose fit Wall Channel 4720 to the other Door Frame jamb and fit the door and frame into fitted wall channel. Check for correct operation of pivot door. Seal under the Bottom Pivot jamb. Slide the second Wall Channel to wall (seal behind), align door assembly centrally between Wall Channels before plumbing and fastening.
- 3 - Align Door Frame centrally between the Wall Channels. Check for correct door operation. Fasten the Wall Channel to the Door Frame (top and bottom on inside only) using coloured rivets.

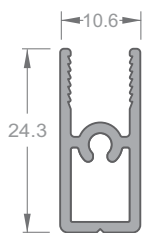
Installation of shower enclosure with return panels.

- 1 - Align the first Wall Channel 4720 against the wall and plumb to ensure that it is vertical. Fasten to wall. Fix at top, bottom and center. Seal behind wall channel before fastening.
- 2 - Align, plumb and fit the return panel Wall Channel 4755 to the other wall after ensuring the correct position. Seal behind before fastening to wall. Fit return panel into wall channel.
- 3 - Fit Corner Channel (90 or 45) section onto the Door Frame jamb and insert door assembly into Wall Channel. Fit corner section onto the return panel.
- 4 - Align door assembly evenly between Wall Channel and Corner Channel. Seal under the Bottom Pivot jam. Check for correct door operation, likewise for return panel. Plumb corner section before fixing the door frame assembly and return panel in position. Fix from inside using coloured rivets. Seal across bottom of return panel.
- 5 - Full height return panels on both sides may require bracing at corners using EX 20 plate to ensure that the shower enclosure is stable.
- 6 - Clean off all fingermarks, leave site tidy and clean

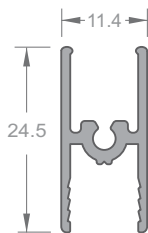
Juralco Magna Shower Door System - End Pivot Type - Extrusions



PANEL STILE
Part No 4754



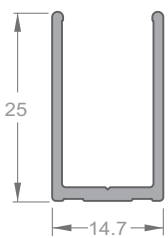
PANEL RAIL
Part No 4753



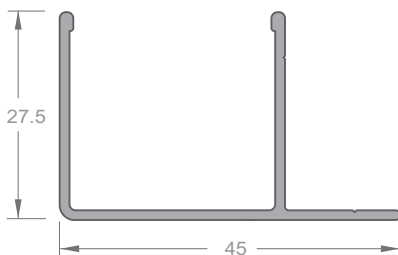
DOOR RAIL
Part No 4759



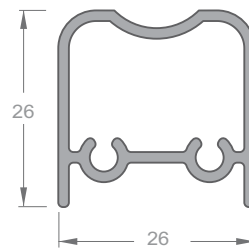
DOOR PIVOT STILE
Part No 4757



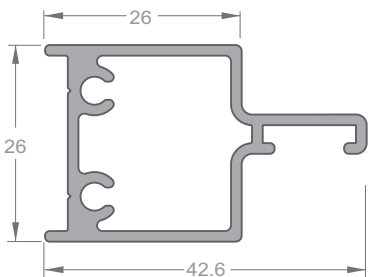
RETURN WALL CHANNEL
Part No 4755



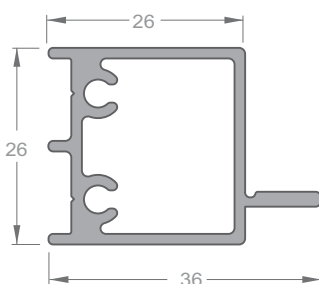
WALL CHANNEL
Part No 4720



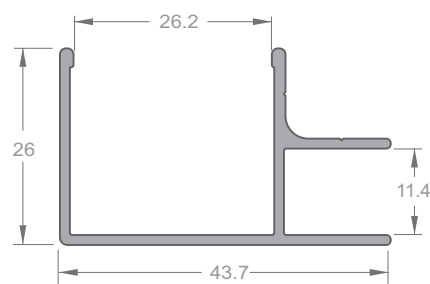
END PIVOT JAMB
Part No 4758



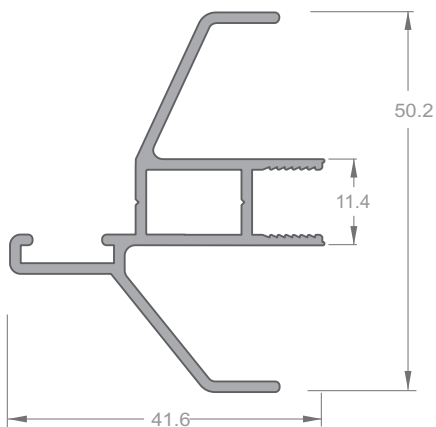
HANDLE JAMB
Part No 4716



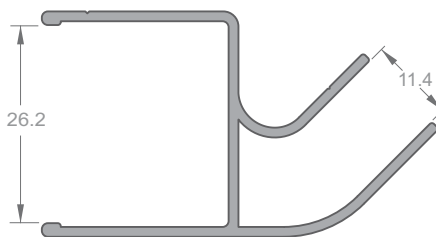
PIVOT JAMB
Part No 4715



90 DEG CORNER CHANNEL
Part No 4723



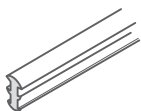
HANDLE STILE
Part No 4717



45 DEG CORNER CHANNEL
Part No 4718

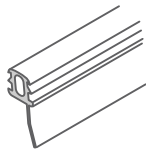
Juralco Magna Shower Door System - End Pivot Type - Components

Glazing Wedge, clear
Part No 22

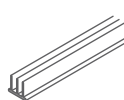


60mt reels

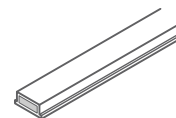
Sill Spray Flap, clear
Part No N 10



Door Pivot Stile seal, clear
Part No H 132

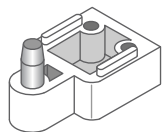


Magnetic Strip



Part No M03/100 - 100mt reels
Part No M03/50 - 50mt reels
Part No M03/50 - H/Duty 50mt

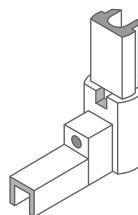
Pivot
Part No M 057



Cover Cap
Part No M 053



Pivot Inner Bracket
Part No M 05

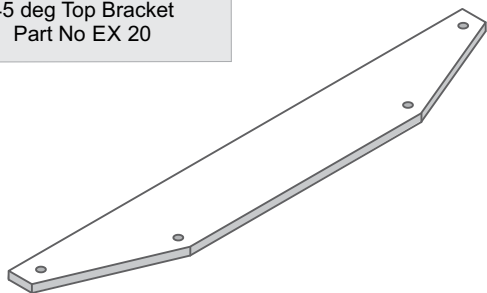


Fasteners

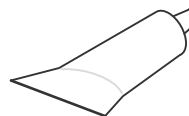


Frame/Pivot Corners - 8 x 38 Pan
Frame/Handle End - 8 x 38 C/S
Door/Pivot Corners - 6 x 25 Pan
Door/Handle End - 6 x 38 C/S
Return Frame - 6 x 38 C/S
Return to Door Frame - Pop 73AS44

45 deg Top Bracket
Part No EX 20



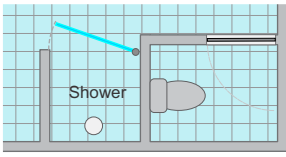
Pivot Lube
Part No J/LUBEWT90



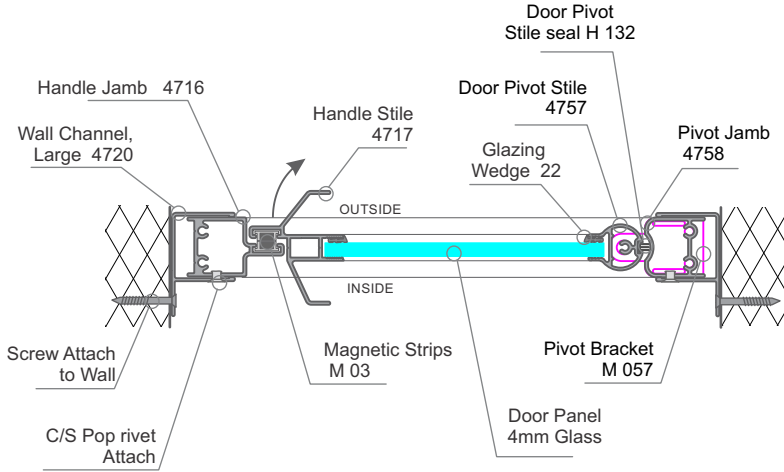
Lubricate all Pivots with WT90

Juralco Magna Shower Door System - End Pivot Type - Typical Sections

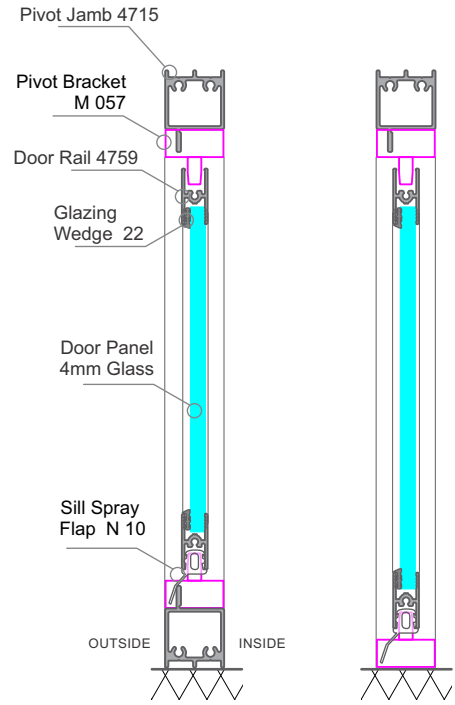
Typical Cross Sections Between Walls - Door only



Juralco Magna Shower Door End Pivot Door



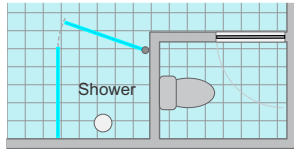
Horizontal Section - Door



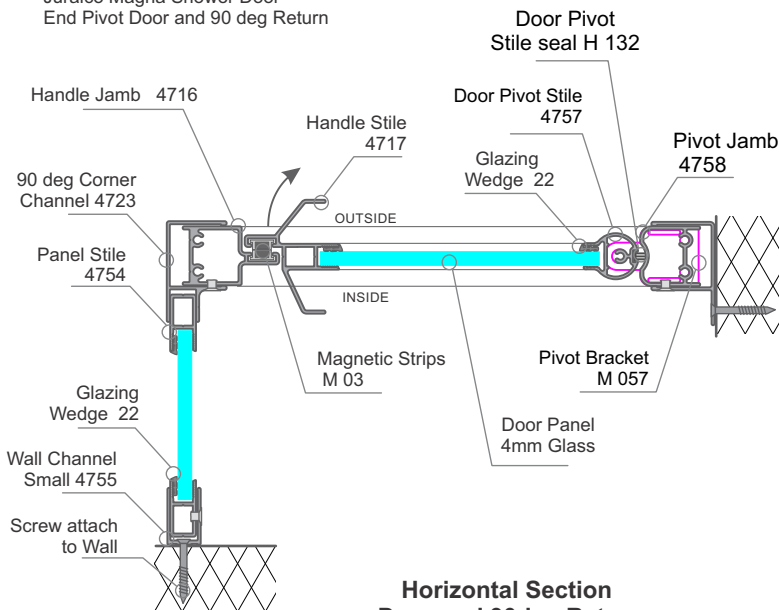
Vertical Section - Door Incl Sill

Vertical Section - Door, no Sill

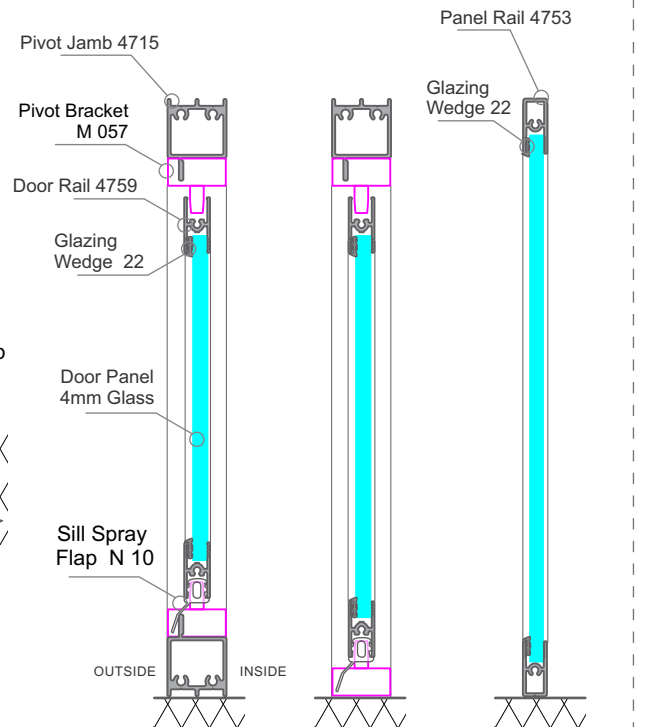
Typical Cross Sections - Door and 90 deg Return



Juralco Magna Shower Door End Pivot Door and 90 deg Return



Horizontal Section - Door and 90deg Return



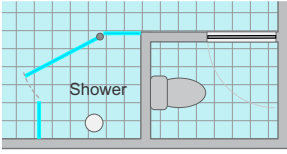
Vertical Section - Door Incl Sill

Vertical Section - Door, no Sill

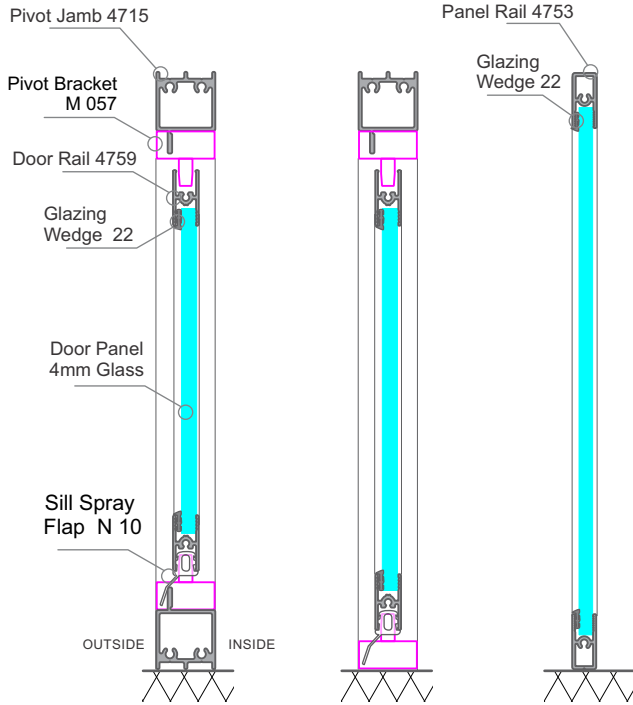
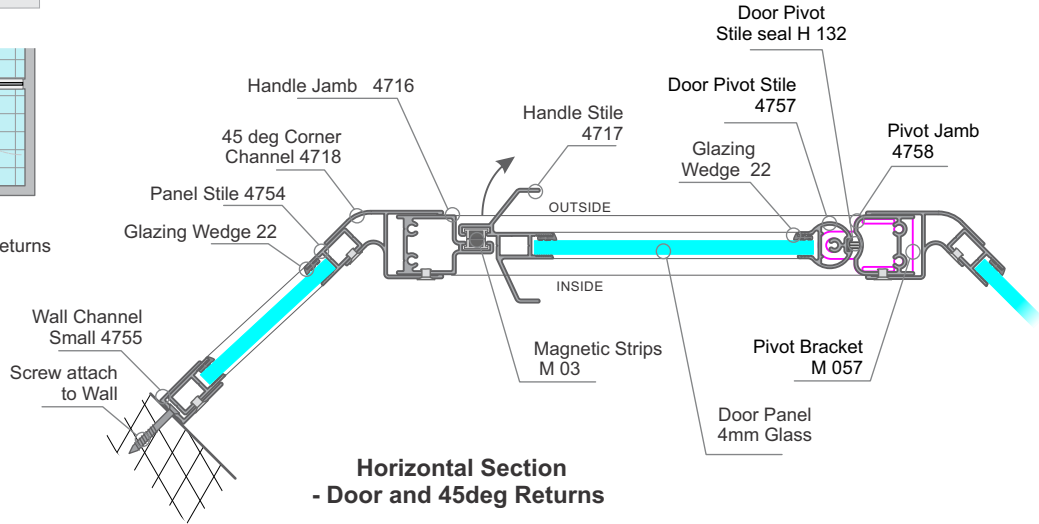
Vertical Section - Return Panel

Juralco Magna Shower Door System - End Pivot Type - Typical Sections

Typical Cross Sections
- Door and 45 deg Returns



Juralco Magna Shower Door
End Pivot Door and 2 x 45 deg Returns



Vertical Section
- Door Incl Sill

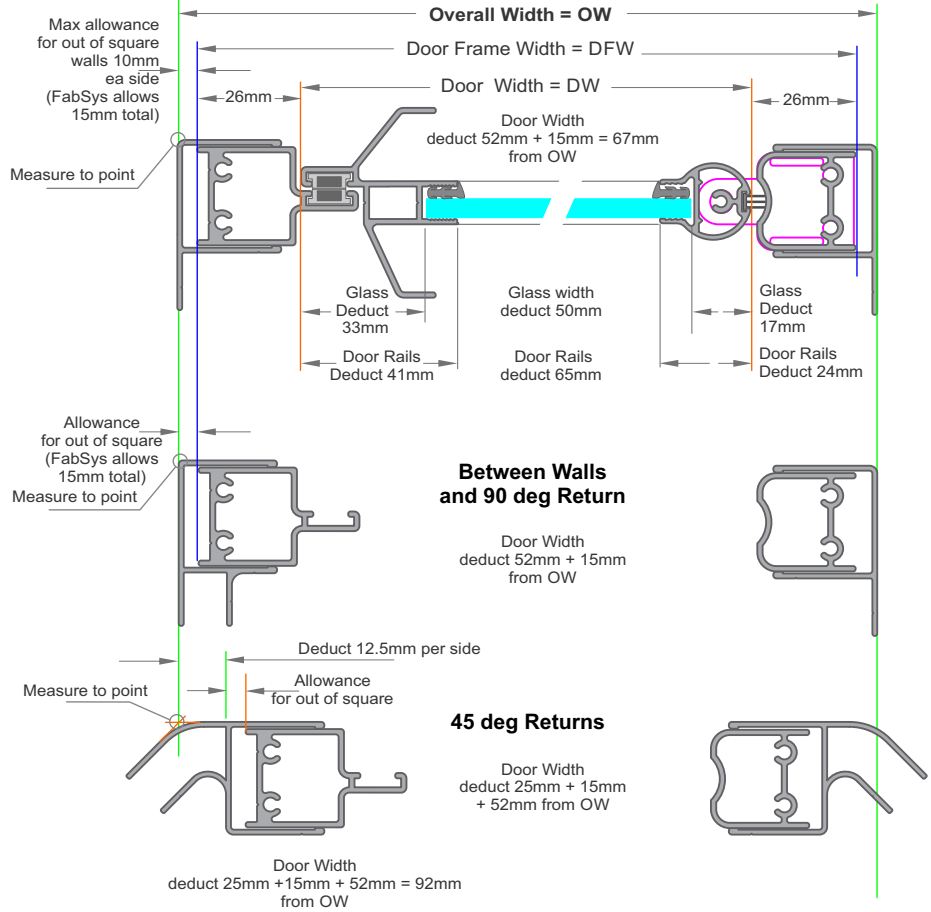
Vertical Section
- Door, no Sill

Vertical Section
- Return Panel

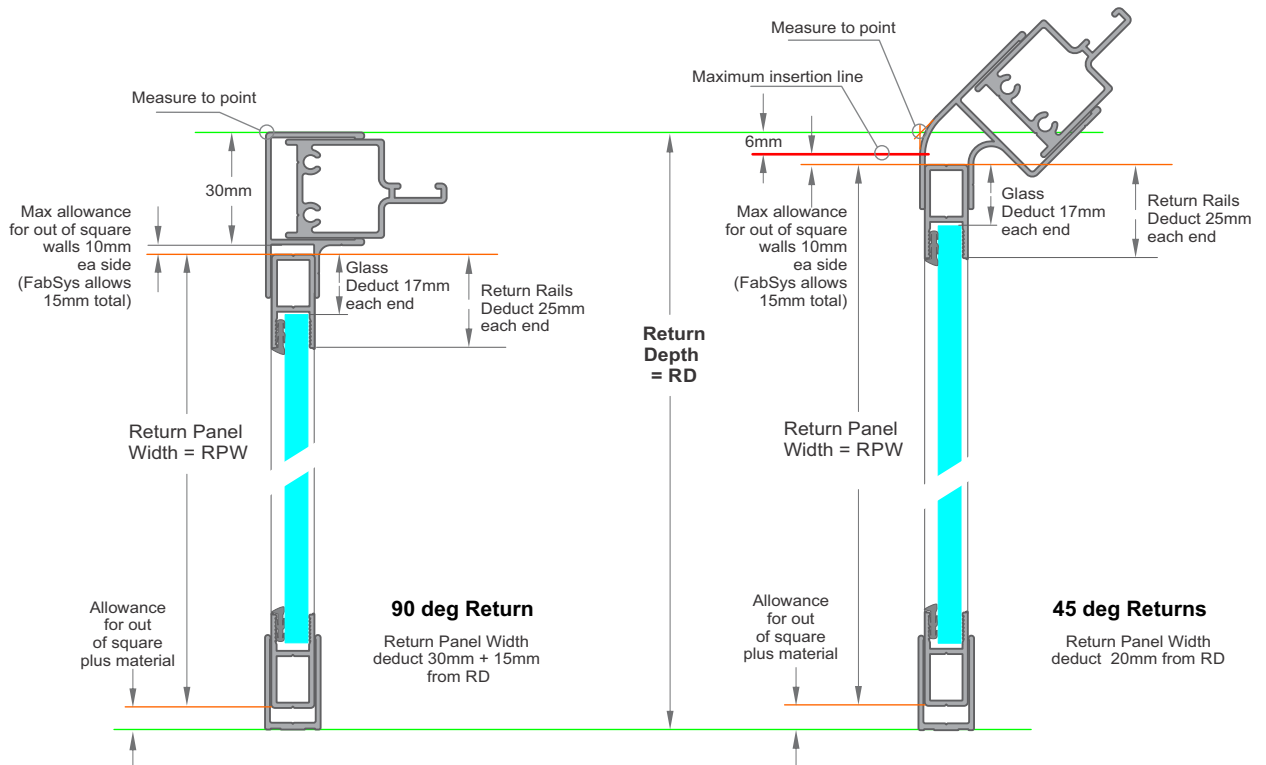
Juralco Magna Shower Door System - End Pivot Type - Width Cutting Considerations

End Pivot Door only Width Cutting Considerations

Note - Maximum Door Panel width = 792mm

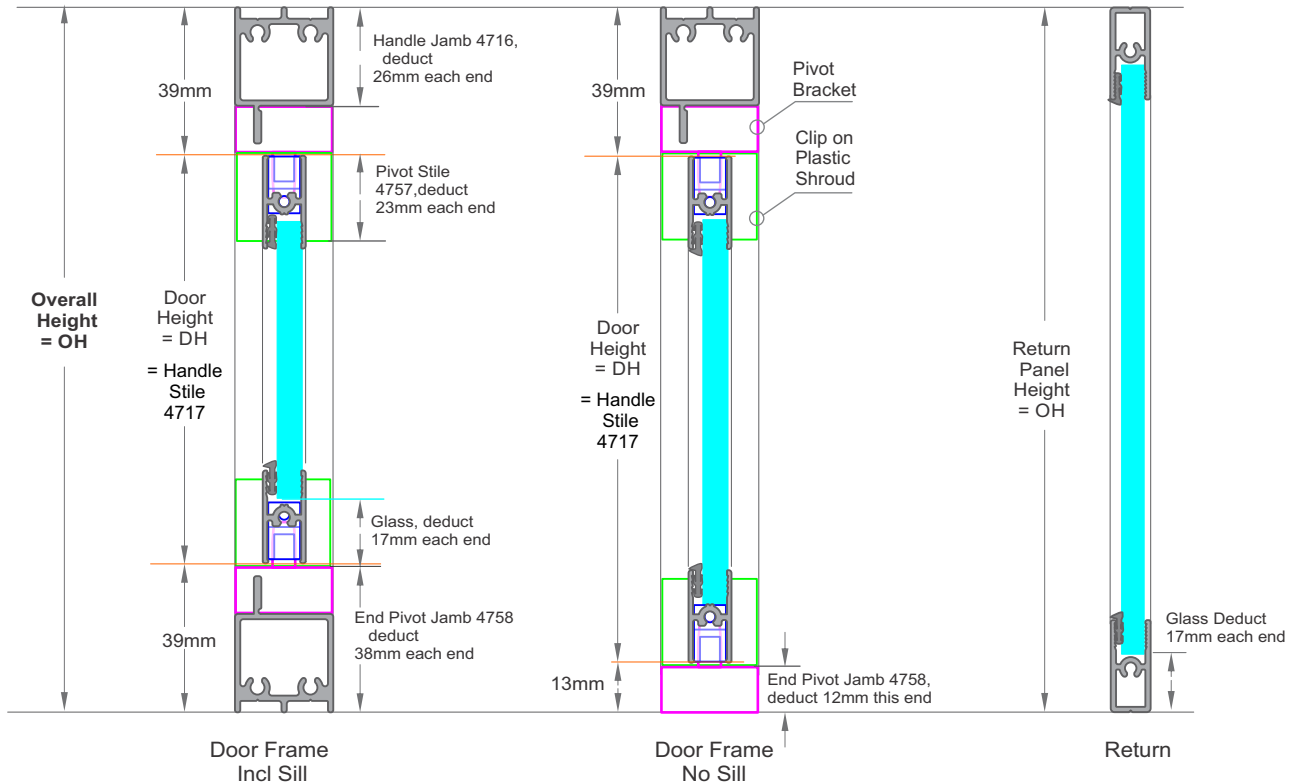


Returns Width Cutting Considerations



Juralco Magna Shower Door System - End Pivot Type - Height Cutting Considerations, Measuring

End Pivot - Panels Height Cutting Considerations



Magna Shower System Measuring

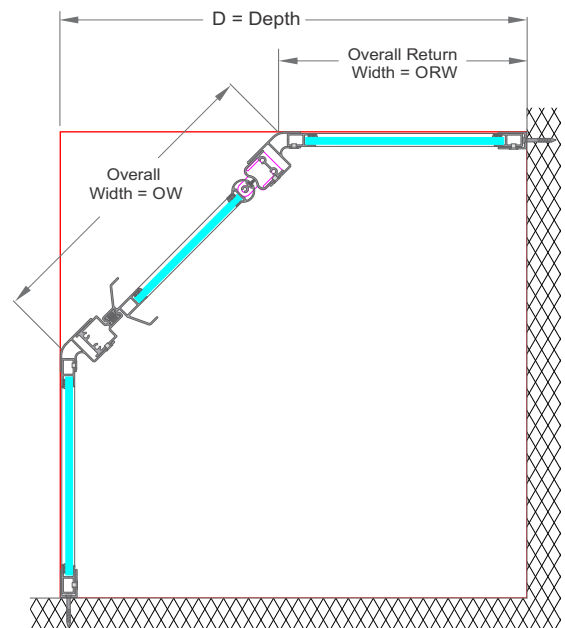
- Measure width top and bottom of the shower screen. Check for out of square walls and note the out of plumb measurements.
- Double check of measurements is recommended.
- Check position of taps and other fittings within shower recess for clearance. For shower enclosures with return panels establish points at corners where outside line of screen will finish. Measure to these points. Small off-cuts of corner sections are useful to assist in determining where shower enclosure is to finish.
- Out of plumb walls are accommodated within the adjustable wall channels.
- Decide on your Overall Widths and allowances then use the Cutting formula sheets.

Measuring, Selection 2 x 45 deg Returns

Table giving Overall Return Width ORW, given Depth and Overall Width

Note - If returns unequal calculate each return separately.

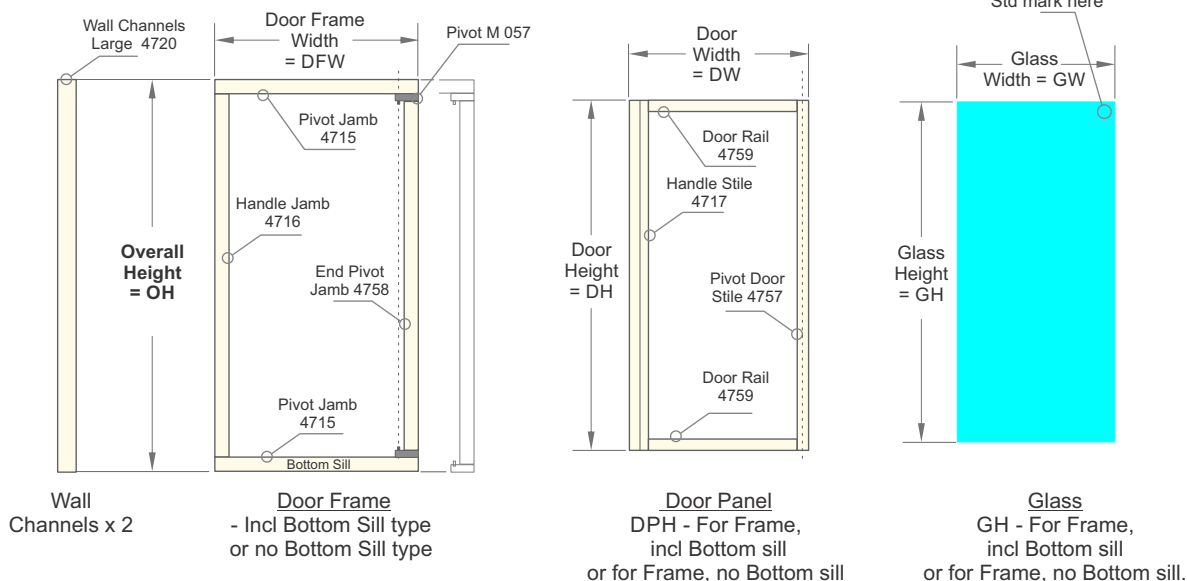
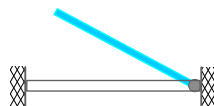
Depth mm	Overall Width = OW, mm								
	800	900	1000	1100	1200	1300	1400	1500	1600
1000	434	364	293	222	NA	NA	NA	NA	NA
1100	534	464	393	322	252	181	NA	NA	NA
1200	634	564	493	422	352	281	210	NA	NA
1300	734	664	593	522	452	381	310	240	NA
1400	834	764	693	622	552	481	410	340	269
1500	934	864	793	722	652	581	510	440	369
1600	1034	964	893	822	752	681	610	540	469
1700	1134	1064	993	922	852	781	710	640	569
1800	1234	1164	1093	1022	952	881	810	740	669
1900	1334	1264	1193	1122	1052	981	910	840	769
2000	1434	1364	1293	1222	1152	1081	1010	940	869



Juralco Magna Shower Door System - End Pivot Type - Cutting

Between Walls, Door only

Door Frame (and associated Door/Glass) available as either; Including or No Bottom Sill types



- 1 - After site measuring decide on the Overall width.
- 2 - Then allowances for out of plumb. Minimum total (incl both sides) = 3mm, maximum total = 20mm
- 3 - This will give the Door Frame Width as in 1 below

Between Walls - End Pivot Door only - DFW maximum 792mm

	ITEM	PART	Formula, mm
1	Width Door Frame Width - deduct allowances from the Overall Width		OH - 15 = DFW
2	Width Door Frame - Pivot Jamb top (and bottom if Bottom sill)	4715	DFW
3	Width Door width = DW		DFW - 52 = DW
4	Width Door - Door Rails top and bottom	4759	DW - 65
5	Width Door - Glass = GW	4mm	DW - 50

Heights, Including Bottom Sill type.

1	Height Door Frame Height = Overall Height		OH
2	Height Wall Channel, large	4720	OH
3	Height Door Frame - Handle Jamb	4716	OH - 52
4	Height Door Frame - End Pivot Jamb	4758	OH - 76
5	Height Door height = DH		OH - 78 = DH
6	Height Door - Handle Stile	4717	DH
7	Height Door - Pivot Stile	4757	DH - 46
8	Height Door - Glass = GH	4mm	DH - 34

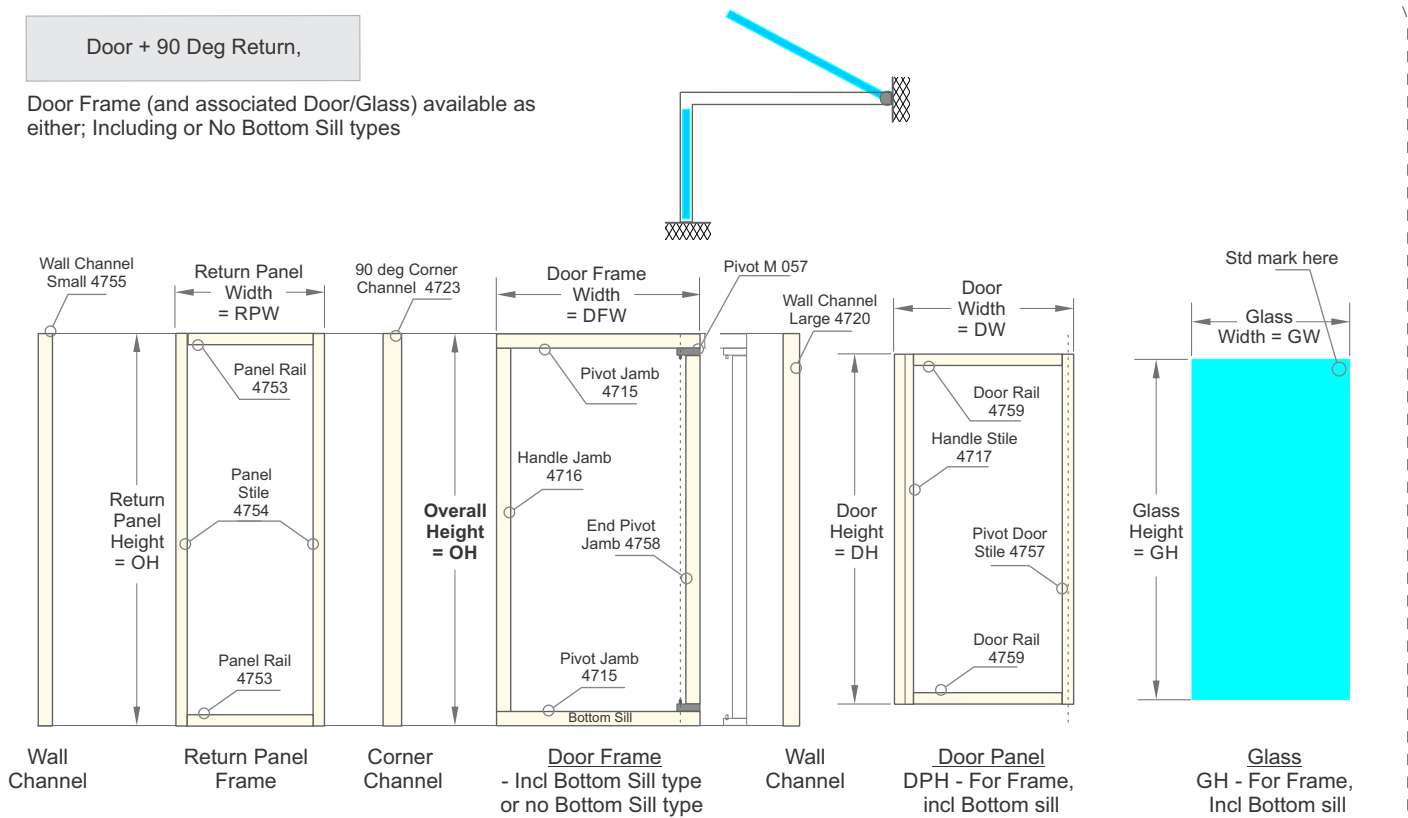
Heights, No Bottom Sill type.

1	Height Door Frame Height = Overall Height		OH
2	Height Wall Channel, large	4720	OH
3	Height Door Frame - Handle Jamb	4716	OH - 26
4	Height Door Frame - End Pivot Jamb	4758	OH - 50
5	Height Door height = DH		OH - 52 = DH
6	Height Door - Handle Stile	4717	DH
7	Height Door - Pivot Stile	4757	DH - 46
8	Height Door - Glass = GH	4mm	DH - 34

Juralco Magna Shower Door System - End Pivot Type - Cutting

Door + 90 Deg Return,

Door Frame (and associated Door/Glass) available as either; Including or No Bottom Sill types



- 1 - After site measuring decide on the Overall width.
- 2 - Then allowances for out of plumb. Minimum total (incl both sides) = 3mm, maximum total = 20mm
- 3 - This will give the Door Frame Width as in 1 below
- 4 - Same procedure for Return panel. 5 - Overall Height normally 1830mm or 1930mm

90 Deg Return - End Pivot Door. DFW maximum 792mm

	ITEM	PART	Formula, mm
1	Width Door Frame Width - deduct allowances from the Overall Width		OW - 15 = DFW
2	Width Door Frame - Pivot Jamb top (and bottom if Bottom sill)	4715	DFW
3	Width Door width = DW		DFW - 52 = DW
4	Width Door - Door Rails top and bottom	4759	DW - 65
5	Width Door - Glass = GW	4mm	DW - 50
6	Width Return Panel Width - deduct allowances from the Return Depth		RD - 45 = RPW
7	Width Return Panel - Rails top and bottom	4753	RPW - 50
8	Width Return Panel - Glass	4mm	RPW - 34

Heights, Including Bottom Sill type.

1	Height Door Frame Height = Overall Door Height		OH
2	Height Wall Channels, large, small	4720, 4755	OH
3	Height 90 deg Corner Channel	4723	OH
4	Height Door Frame - Handle Jamb	4716	OH - 52
5	Height Door Frame - End Pivot Jamb	4758	OH - 76
6	Height Door height = DH		OH - 78 = DH
7	Height Door - Handle Stile	4717	DH
8	Height Door - Panel Stile	4757	DH - 46
9	Height Door - Glass	4mm	DH - 34
10	Height Return Panel - Panel Stile	4754	OH
11	Height Return Panel - Glass = GH	4mm	OH - 34

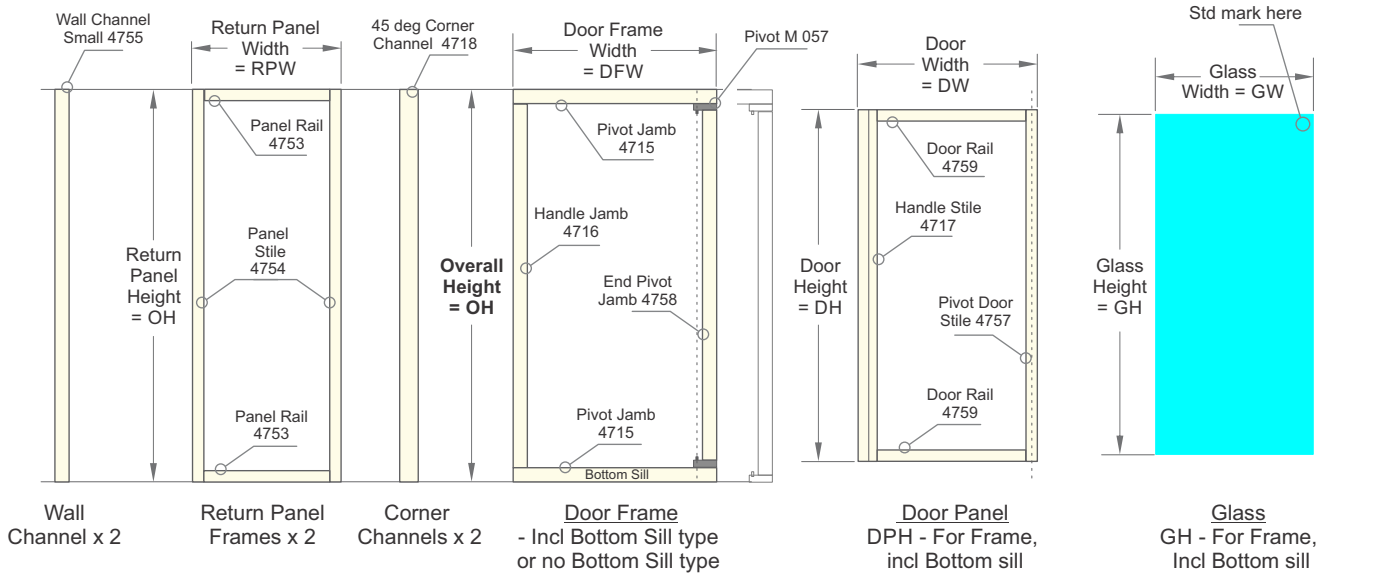
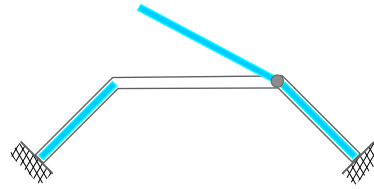
Heights, No Bottom Sill type.

1	Height Door Frame Height = Overall Door Height		OH
2	Height Wall Channels, large, small	4720, 4755	OH
3	Height 90 deg Corner Channel	4723	OH
4	Height Door Frame - Handle Jamb	4716	OH - 26
5	Height Door Frame - End Pivot Jamb	4758	OH - 50
6	Height Door height = DH		OH - 52 = DH
7	Height Door - Handle Stile	4717	DH
8	Height Door - Pivot Stile	4757	DH - 46
9	Height Door - Glass = GH	4mm	DH - 34
10	Height Return Panel - Panel Stile	4754	OH
11	Height Return Panel - Glass = GH	4mm	OH - 34

Juralco Magna Shower Door System - End Pivot Type - Cutting

Door + 2 x 45 Deg Returns

Door Frame (and associated Door/Glass) available as either; Including or No Bottom Sill types



Wall Channel x 2
Return Panel Frames x 2
Corner Channels x 2
Door Frame - Incl Bottom Sill type or no Bottom Sill type
Door Panel DPH - For Frame, incl Bottom sill or for Frame, no Bottom sill
Glass GH - For Frame, Incl Bottom sill or for Frame, No Bottom sill.

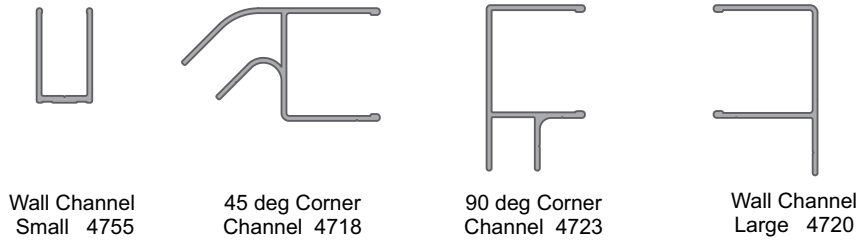
- 1 - After site measuring decide on the Overall width.
- 2 - Then allowances for out of plumb. Minimum total (incl both sides) = 3mm, maximum total = 20mm
- 3 - This will give the Door Frame Width as in 1 below
- 4 - Same procedure for Return panel. 5 - Overall Height normally 1830mm or 1930mm

45 Deg Returns - End Pivot Door. DFW maximum 910mm				
		ITEM	PART	Formula, mm
1	Width	Door Frame Width - deduct allowances from the Overall Width		OW - 40 = DFW
2	Width	Door Frame - Pivot Jamb top (and bottom if Bottom sill)	4715	DFW
3	Width	Door width = DW		DFW - 52 = DW
4	Width	Door - Door Rails top and bottom	4759	DW - 65
5	Width	Door - Glass	4mm	DW - 50
6	Width	Return Panel Width - deduct allowances from the Return Depth		RD - 20 = RPW
7	Width	Return Panel - Rails top and bottom	4753	RPW - 50
8	Width	Return Panel - Glass	4mm	RPW - 34
Heights, Including Bottom Sill type.				
1	Height	Door Frame Height = Overall Height		OH
2	Height	Wall Channels, small	4755	OH
3	Height	45 deg Corner Channel	4718	OH
4	Height	Door Frame - Handle Jamb	4716	OH - 52
5	Height	Door Frame - End Pivot Jamb	4758	OH - 76
6	Height	Door height = DH		OH - 78 = DH
7	Height	Door - Handle Stile	4717	DH
8	Height	Door - Panel Stile	4757	DH - 46
9	Height	Door - Glass	4mm	DH - 34
10	Height	Return Panel - Panel Stile	4754	OH
11	Height	Return Panel - Glass = GH	4mm	OH - 34
Heights, No Bottom Sill type.				
1	Height	Door Frame Height = Overall Height		OH
2	Height	Wall Channel, small	4755	OH
3	Height	45 deg Corner Channel	4718	OH
4	Height	Door Frame - Handle Jamb	4716	OH - 26
5	Height	Door Frame - End Pivot Jamb	4758	OH - 50
6	Height	Door height = DH		OH - 52 = DH
7	Height	Door - Handle Stile	4717	DH
8	Height	Door - Pivot Stile	4757	DH - 46
9	Height	Door - Glass = GH	4mm	DH - 34
10	Height	Return Panel - Panel Stile	4754	OH
11	Height	Return Panel - Glass = GH	4mm	OH - 34

Juralco Magna Shower Door System - End Pivot Type - Machining

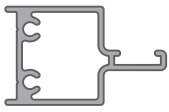
Wall and Corner Sections Machining

- All cut square
- All drilled to suit on site
- Screw to wall - 5mm holes
- Pop rivet countersunk 44 - 3.2 dia holes

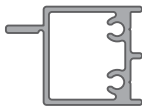


Door Frame Machining

- All cut square
- No Machining for Handle Jamb and End Pivot Jamb
- Machining for Horizontal Pivot Jamb as below



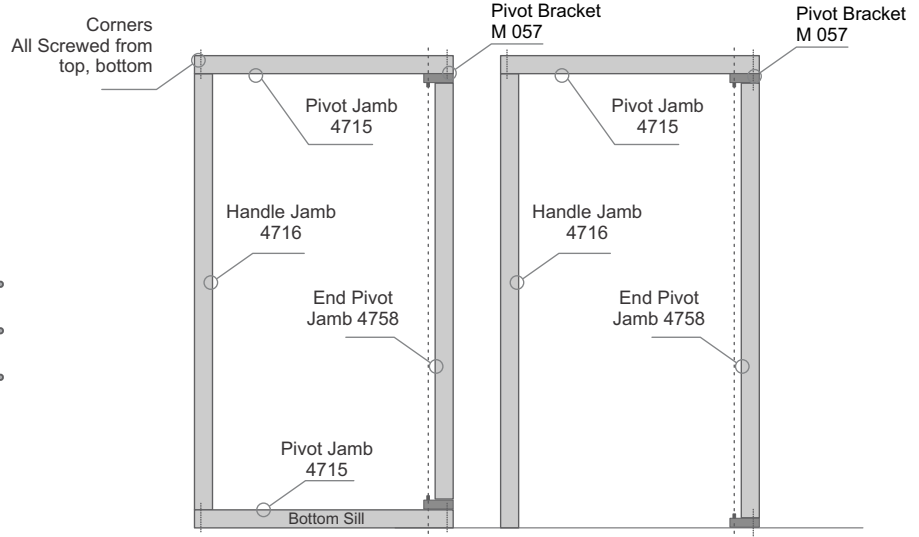
Handle Jamb 4716



Pivot Jamb 4715



End Pivot Jamb 4758

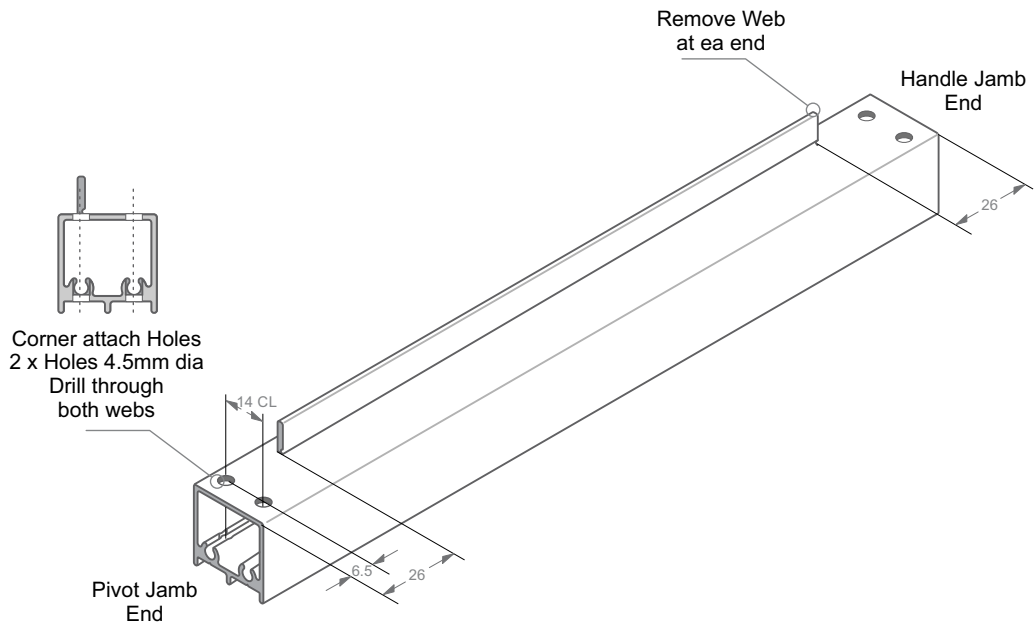


Door Frame Incl Bottom Sill type

Door Frame No Bottom Sill type

Door Frame - Top, Bottom Pivot Jamb, Machining

- Machining for Pivot Jamb top and bottom
- Identical machining
- If no Sill, Top only



Juralco Magna Shower Door System - End Pivot Type - Machining

Door Machining

- All cut square
- No machining
- Dimensions to cutting formula



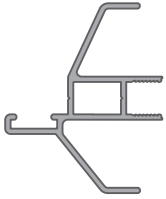
Door Rail 4759



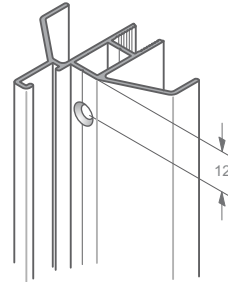
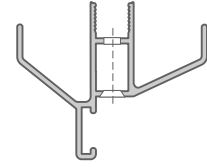
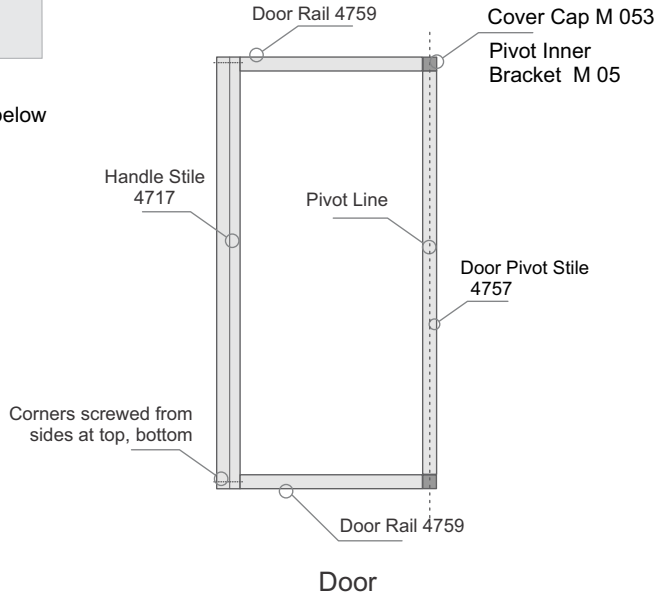
Door Pivot Stile 4757

Door Machining

- All cut square
- Machining for Handle Stile below



Handle Stile 4717



Handle Stile 4717

- All Corner attach Holes
- 2 x Holes 4.5mm dia, Outer one C/sink
- Drill through both webs. Drill to V groove
- Identical holes Top and Bottom of Stile

Return Panel Machining

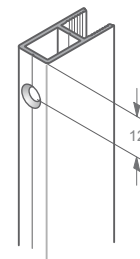
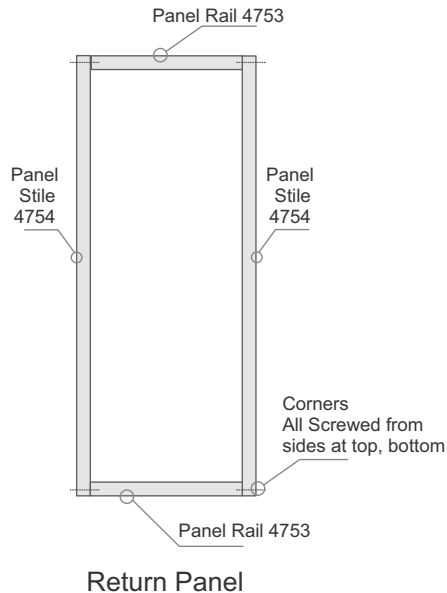
- All cut square
- No Machining for Panel Rails
- Machining for Panel Stiles as below



Panel Rail 4753



Panel Stile 4754



Panel Stile 4754

- All Corner attach Holes
- 2 x Holes 4.5mm dia, Outer one C/sink
- Drill through both webs. Drill to V groove
- Identical holes Top and Bottom of Stiles

Juralco Magna Shower Door System - End Pivot Type - Assembly, Installation

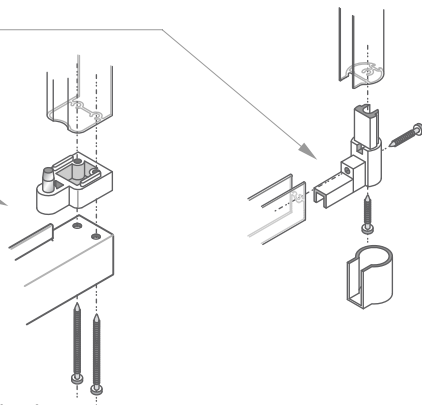
Manufacturing

Note: Lubricate all Pivots with Lube WT90

- 1 - Inspect all extrusions for damage, surface defects. Assemble all necessary components. Ensure workplace is clean.
- 2 - Cut all aluminium sections to the correct lengths. Machine head and sill members of pivot frame using the press tooling.
- 3 - Drill Pivot Jambs 4715 accurately for attach holes and machine web.
- 4 - Start to assemble Door Panel - determine that pivot is located at the correct end of the Panel.
- 5 - Assemble Door pivot end - Door Pivot Stile

- 6 - Glaze Door panel using Glazing wedge 22 to outside, then attach Handle Stile.
- 7 - Then assemble Frame around Door Panel, starting with Pivot End.

Align pivot pins into pivot assemblies.
Fasten frame together with 6 gauge screws.
Seal bottom joints with NG Silicone, screw up tightly.



- 8 - Slide magnetic strip MO3 into Handle Jamb 4716.
Slide magnetic strip MO3 into Door Handle stile 4717 making sure that the strip is inserted in the right way so that the magnetic strips attract each other.
If inserted the wrong way magnetic strips will repel each other. Crimp end of pivot door stile to secure magnetic strip in place.
- 9 - Assemble Return Panels (if needed).
- 10 - Assemble in factory the total unit before delivery to site. The fit and operation of the pivot door should be checked before leaving the factory to ensure correct operation.
- 11 - Ensure that the appropriate wall and corner channels for installation are fitted loose onto the frame jambs.
- 12 - Return panels on 90 degree and 45 degree shower enclosures are glazed in the standard format as for the pivot door panel.
- 13 - Clean off all fingermarks, wrap and pack all components.
- 14 - Strap assembly together to prevent door opening during transport.

Installation

Note: Lubricate all Pivots with Lube WT90

General

- 1 - Unpack, inspect for damage. Check Door (and Returns) are correct ones for this job. Assemble tools.
- 2 - To reduce any risk of damage to the door assembly it is advisable to carry the pivot door assembly on its edge with pivot end at the top.
- 3 - Use a colour co-ordinated NG Silicone sealant for sealing of shower enclosures.
- 4 - The wall channel system used in the Magna shower screen allows for some degree of out of square openings.
- 5 - Fixing to wall to be 25mm x 6g stainless steel screws or wall toggles where appropriate. Use Screw cap covers to cover seen screws.

Installation of shower enclosure between two walls

- 1 - Align the first Wall Channel 4720 against the wall and plumb to ensure that it is vertical. Fasten to wall. Fix at top, bottom and center. Seal behind wall channel before fastening.
- 2 - Loose fit Wall Channel 4720 to the other Door Frame jamb and fit the door and frame into fitted wall channel. Check for correct operation of pivot door. Seal under the Bottom Pivot jamb. Slide the second Wall Channel to wall (seal behind), align door assembly centrally between Wall Channels before plumbing and fastening.
- 3 - Align Door Frame centrally between the Wall Channels. Check for correct door operation. Fasten the Wall Channel to the Door Frame (top and bottom on inside only) using coloured rivets.

Installation of shower enclosure with return panels.

- 1 - Align the first Wall Channel 4720 against the wall and plumb to ensure that it is vertical. Fasten to wall. Fix at top, bottom and center. Seal behind wall channel before fastening.
- 2 - Align, plumb and fit the return panel Wall Channel 4755 to the other wall after ensuring the correct position.
Seal behind before fastening to wall. Fit return panel into wall channel.
- 3 - Fit Corner Channel (90 or 45) section onto the Door Frame jamb and insert door assembly into Wall Channel. Fit corner section onto the return panel.
- 4 - Align door assembly evenly between Wall Channel and Corner Channel. Seal under the Bottom Pivot jam. Check for correct door operation, likewise for return panel. Plumb corner section before fixing the door frame assembly and return panel in position.
Fix from inside using coloured rivets. Seal across bottom of return panel.
- 5 - Full height return panels on both sides may require bracing at corners using EX 20 plate to ensure that the shower enclosure is stable.
- 6 - Clean off all fingermarks, leave site tidy and clean