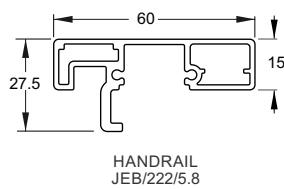
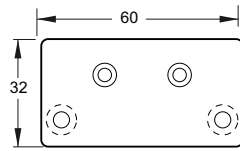


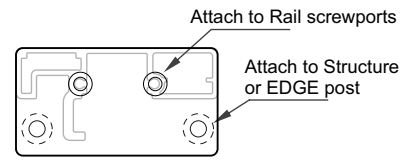
Juralco Handrail End Plates for Attaching to a Structure or Edge Deck mounted Post
All ex 3mm Aluminium



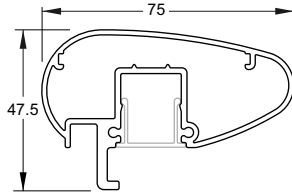
HANDRAIL
JEB/222/5.8



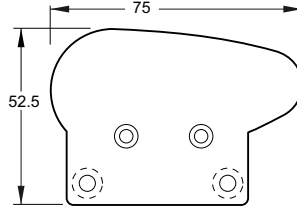
HANDRAIL
WALL ATTACH END PLATE
JEC215/WC



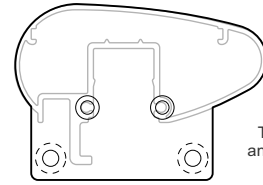
For RH and LH



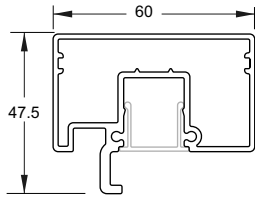
AEROFOIL HANDRAIL
JEB/217/5.8



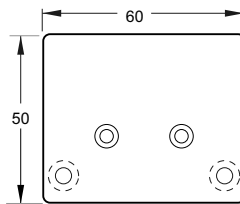
HANDRAIL
WALL ATTACH END PLATE
JEC217/WC



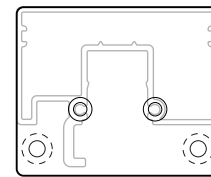
For RH and LH



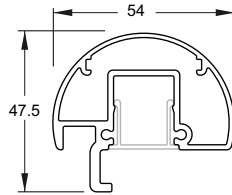
RECTANGULAR
HANDRAIL
JEB/216/5.8



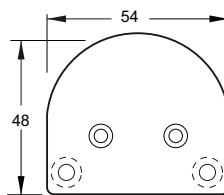
HANDRAIL
WALL ATTACH END PLATE
JEC216/WC



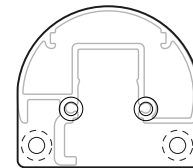
For RH and LH



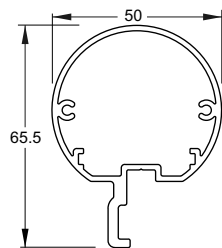
HALF ROUND HANDRAIL
JEB/209/5.8



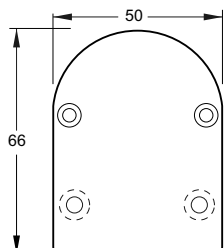
HANDRAIL
WALL ATTACH END PLATE
JEC209/WC



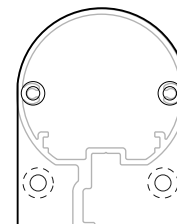
For RH and LH



CIRCULAR HANDRAIL
JEB/221/5.8



HANDRAIL
WALL ATTACH END PLATE
JEC221/WC



For RH and LH

General Notes: - All fixings to be Stainless Steel. - PVC layer between Structure and End Cap
- ULS Point load N* = 0.9kN, inwards, outwards or down and in tension

Note : Fixing to Steel

- use 2 off 8g SS TEK Screws or M6 SS Bolts
- Steel 2mm min thickness
- Steel 300MPa minimum
- 15mm min distance to any Edges

Note : Fixing to Timber Wall

- use 2 off 8g SS Screws, 35mm min into studs.
- use Sika Supergrip 2hr
- 30mm min distance to Horizontal Edge
- If Weatherboard use suitable predrilled Wedge
- Timber stud wall to be designed and detailed in accordance with NZ3603 or NZ3604

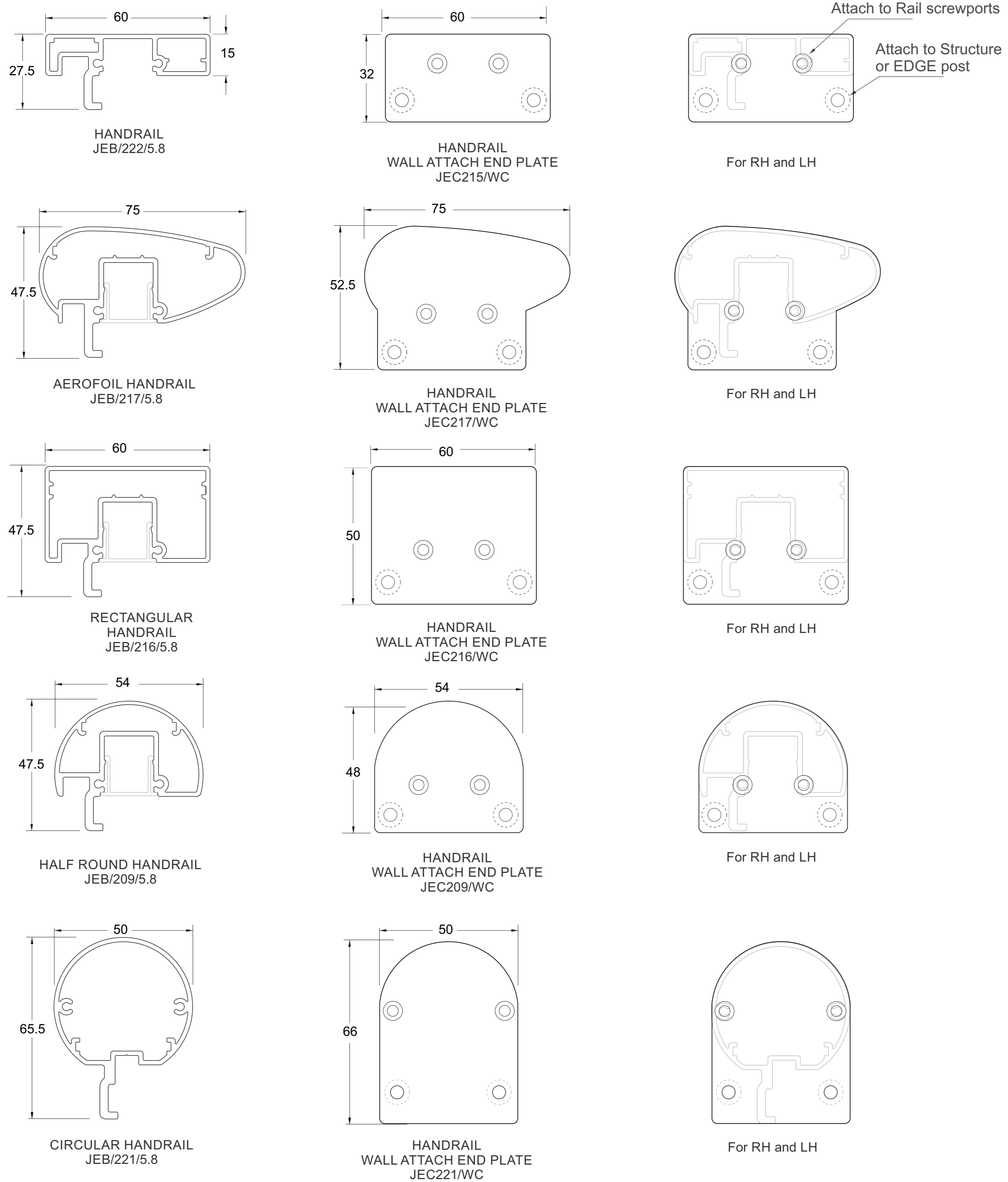
Note : Fixing to Juralco EDGE Post

- use 2 off 8g x 25 SS PK Screws

Note : Fixing to Concrete Wall

- use 2 off M6 x70 SS Screw Anchors
- Solid Concrete min 20Mpa
- Block wall Concrete filled/Reinforced
- 140mm min Wall thickness
- 70mm min distance to Horizontal Edge
- 100mm min distance to Vertical Edge
- Blockwork wall must be corefilled /reinforced and is to be designed and detailed in accordance with NZ4230 or NZ4229

**Juralco Handrail End Plates for Attaching to a Structure or Edge Deck mounted Post
All ex 3mm Aluminium**



General Notes: - All fixings to be Stainless Steel. - PVC layer between Structure and End Cap
- ULS Point load N* = 0.9kN, inwards, outwards or down and in tension

Note : Fixing to Steel

- use 2 off 8g SS TEK Screws or M6 SS Bolts
- Steel 2mm min thickness
- Steel 300MPA minimum
- 15mm min distance to any Edges

Note : Fixing to Timber Wall

- use 2 off 8g SS Screws, 35mm min into studs.
- use Sika Supergrip 2hr
- 30mm min distance to Horizontal Edge
- If Weatherboard use suitable predrilled Wedge
- Timber stud wall to be designed and detailed in accordance with NZ3603 or NZ3604

Note : Fixing to Juralco EDGE Post

- use 2 off 8g x 25 SS PK Screws

Note : Fixing to Concrete Wall

- use 2 off M6 x70 SS Screw Anchors
- Solid Concrete min 20Mpa
- Block wall Concrete filled/Reinforced
- 140mm min Wall thickness
- 70mm min distance to Horizontal Edge
- 100mm min distance to Vertical Edge
- Blockwork wall must be corefilled /reinforced and is to be designed and detailed in accordance with NZ4230 or NZ4229