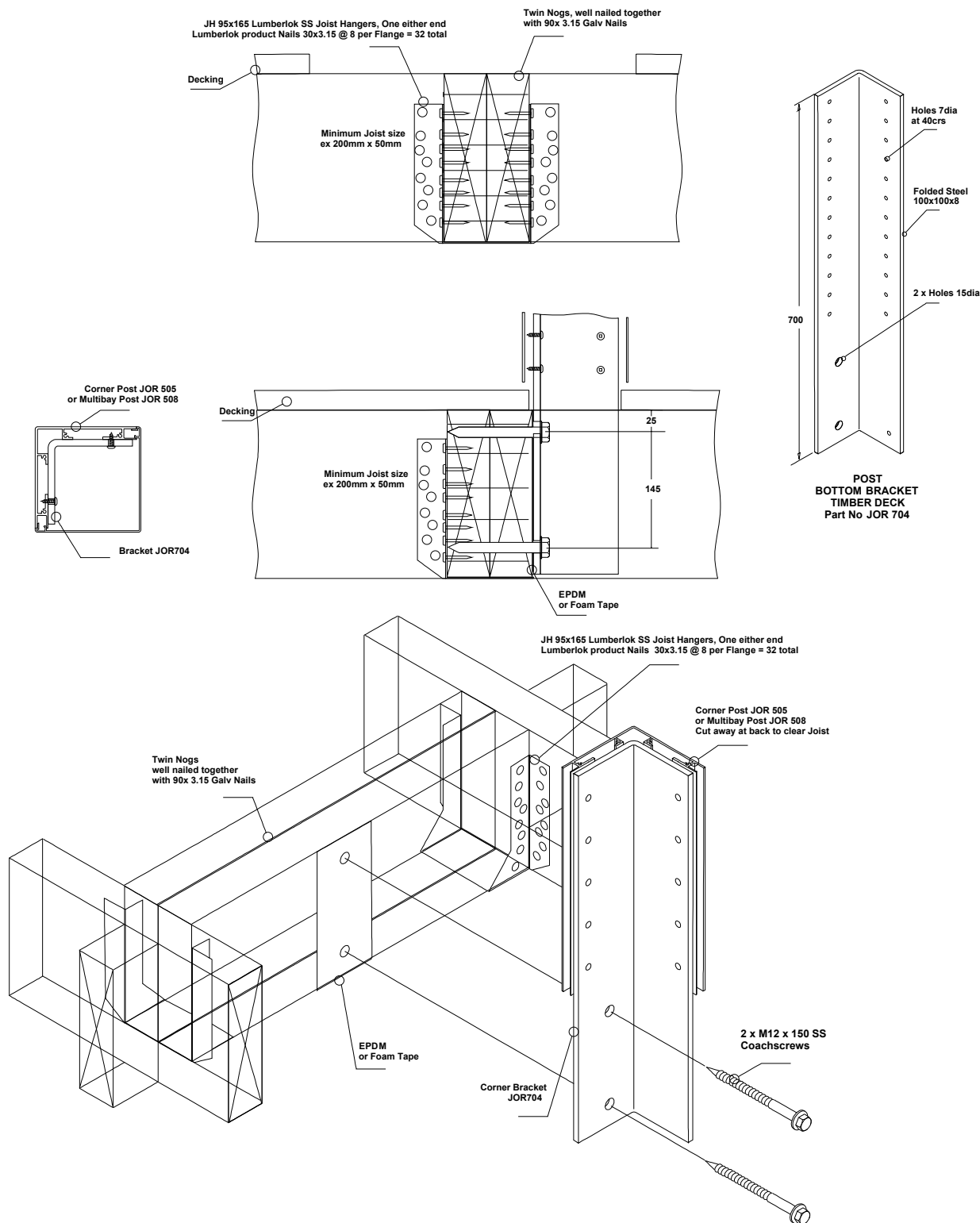


Typical FACE Fix to Timber (Deck Inner Area) - Bask Corner Post JOR 505, M12 SS Coachscrews

Important Note:
Juralco can only guarantee the suitability of the initial connection.
In this case the 2 x M12 Coachscrews into the Double Boundary Joist.
All subsequent connections and strengthening to a structure are the clear responsibility of the builder/ installer.
Any other specifications on this page are general suggestions only.
Please refer to the Juralco Bask Manual/Structural Configurations/Areas /Wind Zones for guidance on Forces the structure will have to withstand.



Important Installation Notes:

- 1 - A Design engineer must ensure the building structure can support the appropriate loading at each Post
- 2 - Coachscrews 90mm min thread engagement into joists
- 3 - Bond all coachscrews with **NIKA Supergrip** to full depth
- 4 - An EPDM, Rubber or Foam Tape layer must be installed between the Post and Timber
- 5 - All fixings must be Stainless Steel