



 JURALCO

JURALCO SCOPEDOR SHOWER DOOR SYSTEM

ISSUE 1/17

Juralco Scopedor Shower Door System

Juralco Aluminium Building Products Ltd designs and distributes specialist aluminium joinery systems through a national network of franchised fabricators and agents.

For more than 25 years we have been at the forefront of specialist aluminium door and window products suitable for New Zealand joinery and building methods. Our comprehensive product range includes security and insect screens, balustrades and gates, shutters and awnings, shower screens, wardrobe doors and organisers and internal doors.6

The Juralco Scopedor Shower Door system is ideal for any sized bathroom; the Scopedor frame provides colour as well as the practicality of a watertight seal.

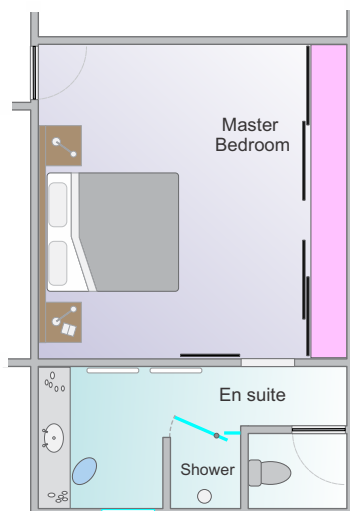
The adjustable-width opening means that even the most out-of plumb walls can be effectively compensated for fitting comfortably into your bathroom's specifications. The Scopedor can be floor mounted with a bottom rail or custom-made without, making it suitable for level entry disabled access. The only fittings on the frameless door panel are small elegant Tee handles and a pair of pivots making it very easy to clean.

The Scopedor is available in standard sizes each expanding up to 70mm and is fully reversible for either right or left-hand opening. Choose from our range of standard sizes or have one custom-made to suit your bathroom.

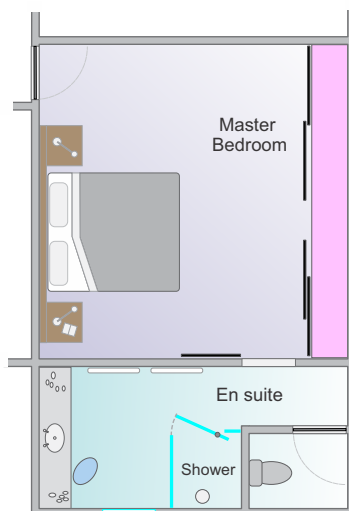
This Guide is intended for use by Architects, Specifiers and Fabricators
Pages 2-3 covers areas of general interest. Pages 4 onwards are intended for Fabricators.

Layouts

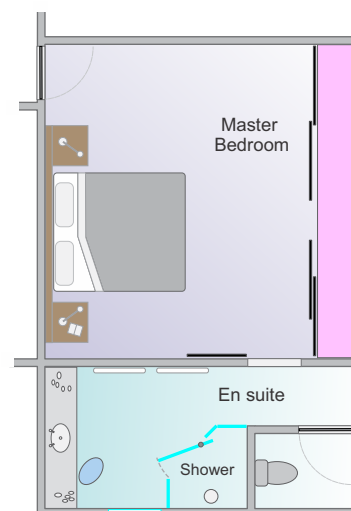
Shown below are the three layout possibilities for the Scopedor Shower Door System



Juralco Scopedor Shower Door System
Pivot Door and fixed Panel



Juralco Scopedor Shower Door System
Pivot Door, fixed Panel and 90 deg glass Return



Juralco Scopedor Shower Door System
Pivot Door, fixed panel and 2 x 45 deg glass Returns

Juralco Scopedor Shower Door System

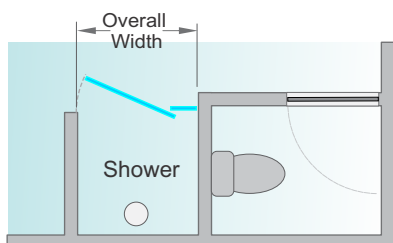
General Description

- The Scopedor Shower Pivot Door system is designed to provide a range of adjustable doors to suit standard openings.
- Variations can be made to suit special requirements not covered within the standard range.
- All doors are constructed from our propriety range of aluminium extrusions.
- Pivot Doors are 6mm and Return Fixed Panels 4mm toughened glass, to NZS 4233 Part 3 for human impact requirements.
- Glass stocked as Standard Clear. Available to special order - Frosted or Patterned.
- Installation system copes with out of plumb walls.
- Available in White powdercoat or Anodised polished bright or natural .
- Designed for installation with standard Shower trays, or direct on to suitable flooring.

Size Range

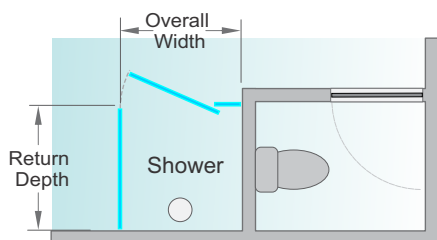
To Specify select appropriate Door and Return sizes, together with colour

Note - Standard height is 1830mm, some models available at 1930mm high.



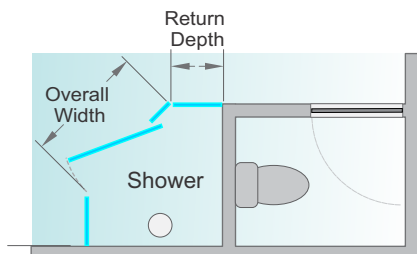
Juralco Scopedor Shower Door System
Pivot Door and fixed Panel

Scope	Standard	Overall Width		Door Entry
Model	Height	Min	Max	Width
640 Door	1830	640	680	440
700 Door	1830	700	780	475
780 Door	1830/1930	780	860	500
860 Door	1830/1930	860	930	560
930 Door	1830	930	1000	610
950 Door	1930	950	1020	640
1170 Door	1830/1930	1170	1240	720



Juralco Scopedor Shower Door System
Pivot Door, fixed Panel and
90 deg Return

Scope	Standard	Return Depth		Panel
Model	Height	Min	Max	Depth
670 Return	1830	670	705	630
710 Return	1830	710	745	670
770 Return	1830	770	805	730
790 Return	1830	790	825	750
830 Return	1830	830	865	790
850 Return	1830	850	885	810
870 Return	1830	870	905	830
880 Return	1930	880	915	845
910 Return	1830	910	945	870
950 Return	1830	950	985	910
970 Return	1930	970	1005	930

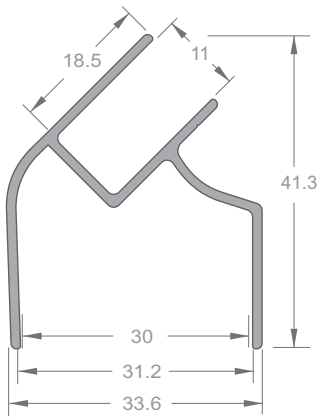


Juralco Scopedor Shower Door System
Pivot Door, fixed Panel and
2 x 45 deg Returns

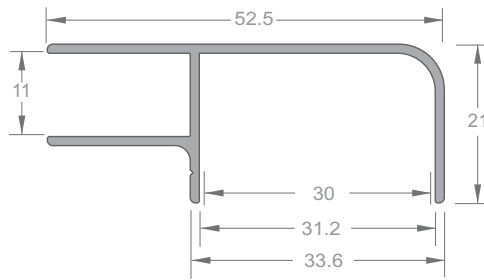
Scope	Standard	Return Depth		Panel
Model	Height	Min	Max	Depth
400 45deg	1830/1930	400	440	394
460 45deg	1830/1930	460	480	452

Note - Also available as complete custom build

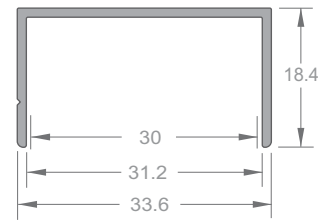
Juralco Scopedor Shower Door System - Extrusions



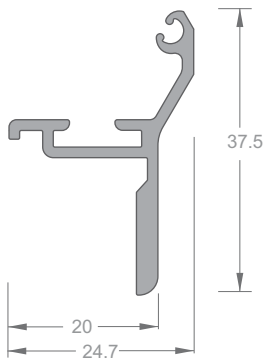
45 DEG JAMB
Part No 6676
(ID at front, compress to 30mm)



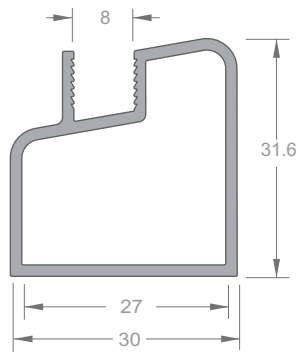
90 DEG JAMB
Part No 6674
(ID at front, compress to 30mm)



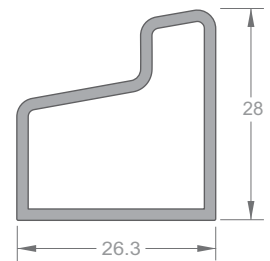
JAMB CAP
Part No 6675
(ID at front, compress to 30mm)



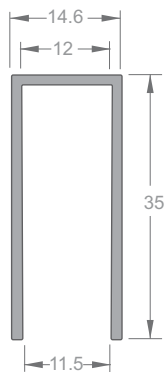
STRIKER
Part No 2989



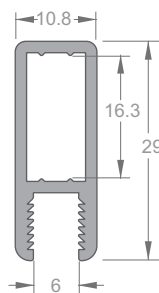
**FIXED PANEL JAMB,
OUTER RAIL**
Part No 6678



**PLAIN JAMB,
INNER RAIL**
Part No 6677



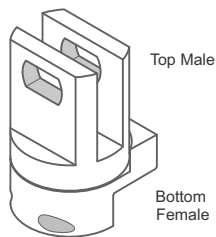
RETURN WALL CHANNEL
Part No 3838



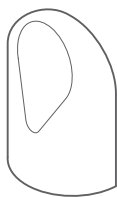
RETURN FRAME
Part No 6679

Juralco Scopedor Shower Door System - Components

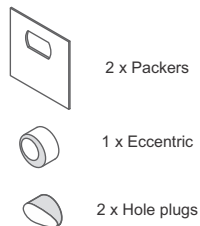
Pivot Block Set
Part No EX 03



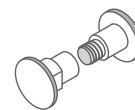
Pivot Block Cover
Part No EX 06



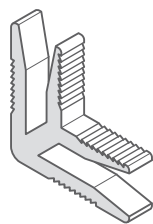
Pivot Spacer Set
Part No EX 03



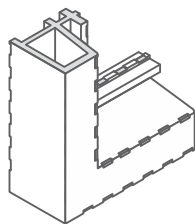
Pivot Screw
Part No EX 12



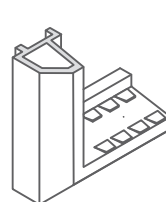
Corner Stake
Part No 04



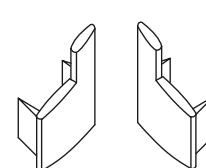
Corner Block, Large
Part No SU 30/LG



Corner Block, Small
Part No SU 30/SM

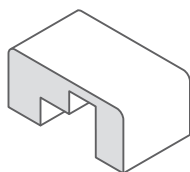


6677 Inner Rail End caps
Part No EX 08

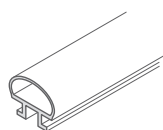


Available only as LH and RH pair

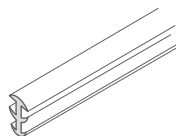
Door set up Block
Part No Scope /AJD



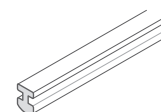
Bulb Seal, white
Part No EX 09



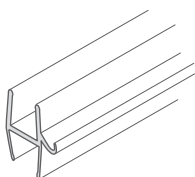
Glazing Wedge, clear
Part No 31



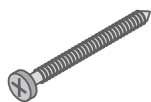
Bumper, clear
Part No EX 07



Splash Strip, clear
Part No EX 10



Fasteners



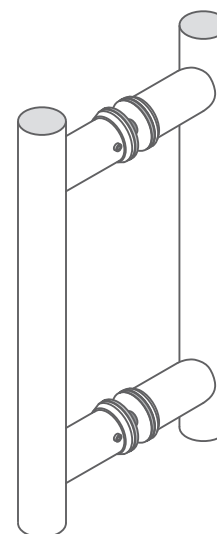
Attach to Walls 8 x 38 Pan SS

Pivot Lube
Part No J/LUBEWT90

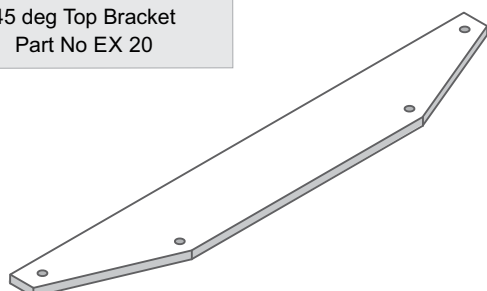


Lubricate all Pivots with WT90

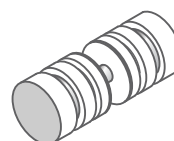
Door Handle
Part No 77



45 deg Top Bracket
Part No EX 20

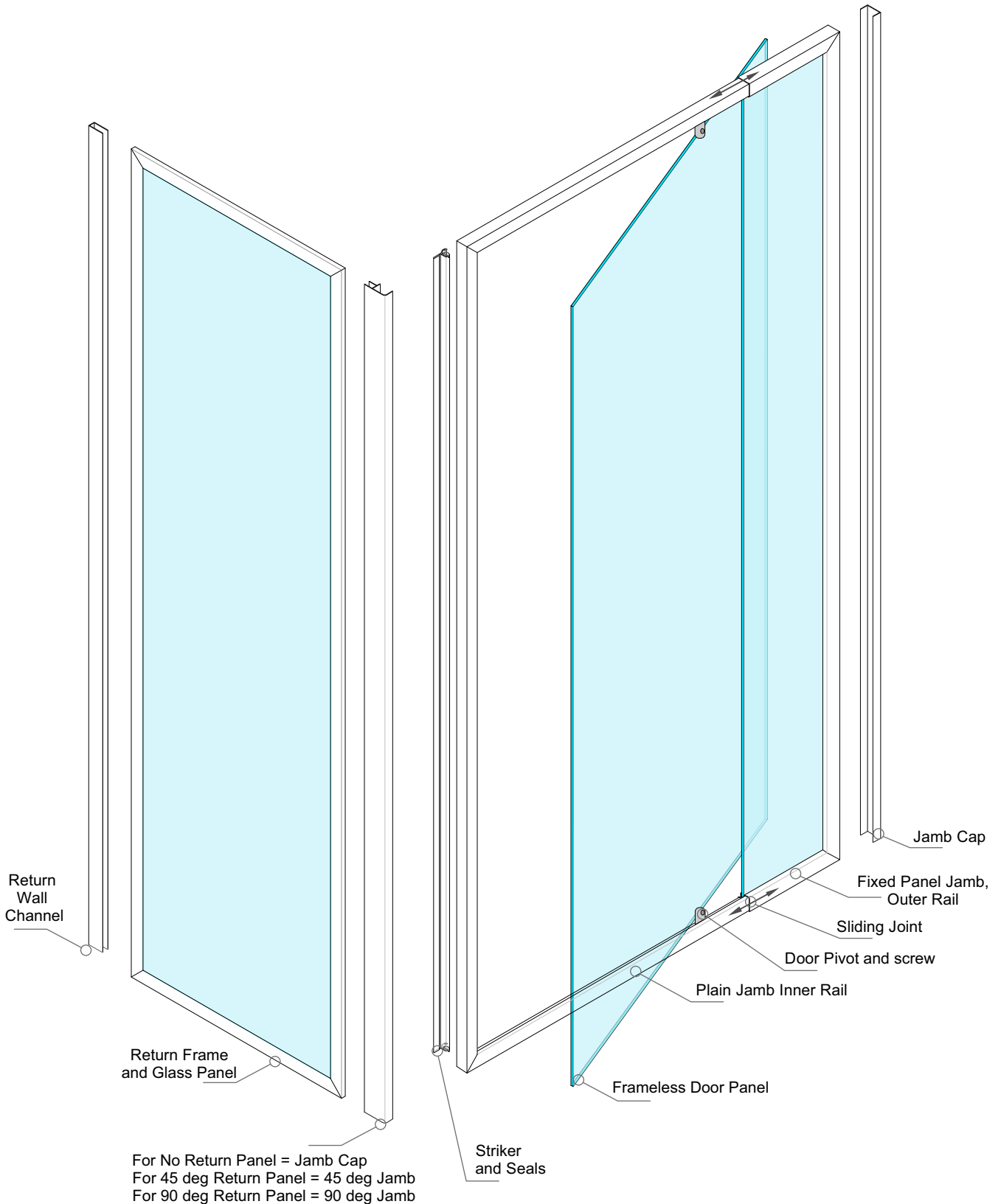


Knob Set
Part No 75



For 6 - 10mm Glass

Juralco Scopedor Shower Door System - Components



<p>Kit for Pivot Door and Fixed Glass Panel</p>
<p>1 x Frameless Glass Door, Fixed Glass Panel and Door Frame Assembly 2 x Jamb Caps</p>

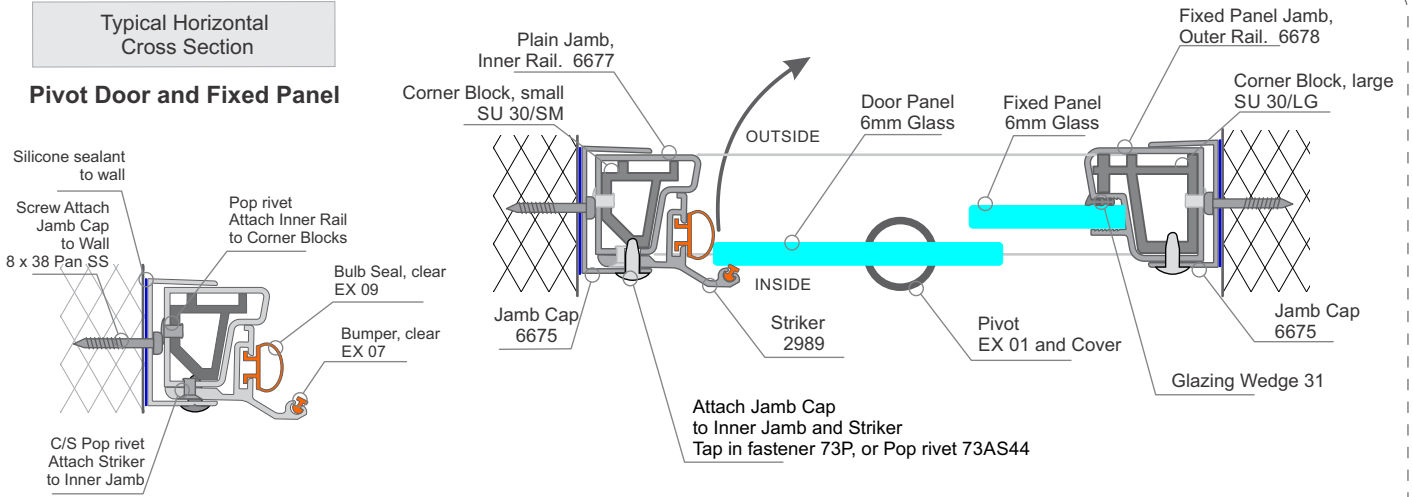
<p>Kit for Pivot Door, Fixed Glass Panel and 90deg Return Panel</p>
<p>1 x Frameless Glass Door, Fixed Glass Panel and Door Frame Assembly 1 x Jamb Cap 1 x 90deg Jamb 1 x Return Wall Channel 1 x Return Frame and Glass</p>

<p>Kit for Pivot Door, Fixed Glass Panel and 2 x 45deg deg Return Panels</p>
<p>1 x Frameless Glass Door, Fixed Glass Panel and Door Frame Assembly 2 x 45deg Jamb 2 x Return Wall Channels 2 x Return Frames and Glass</p>

Juralco Scopedor Shower Door System - Typical Cross Sections

Typical Horizontal Cross Section

Pivot Door and Fixed Panel

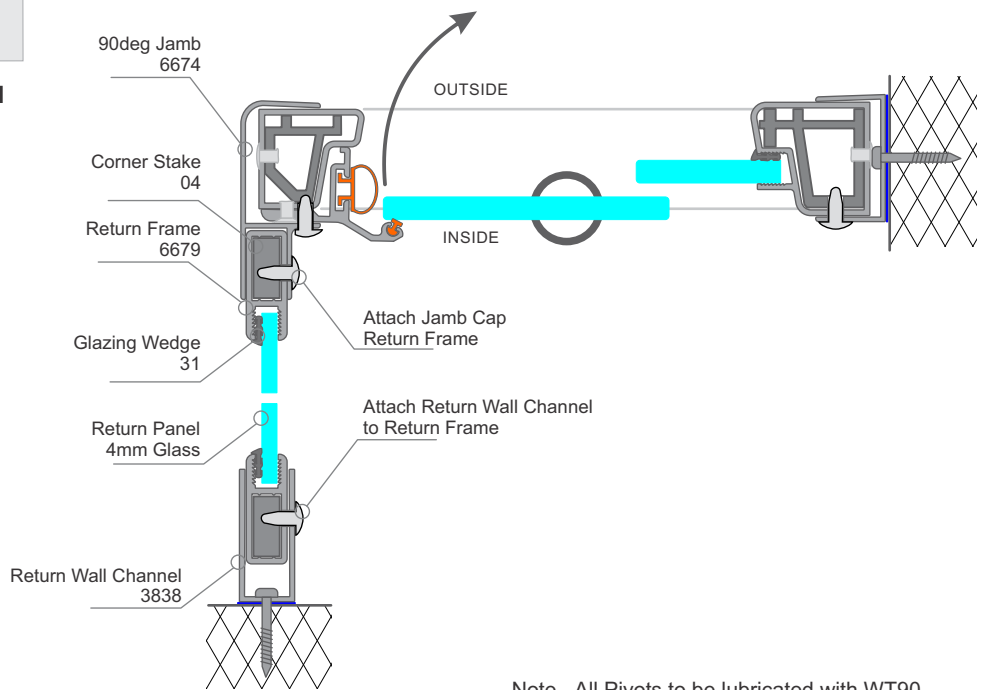


General Attach and Sealing Details

Note - All Pivots to be lubricated with WT90

Typical Horizontal Cross Section

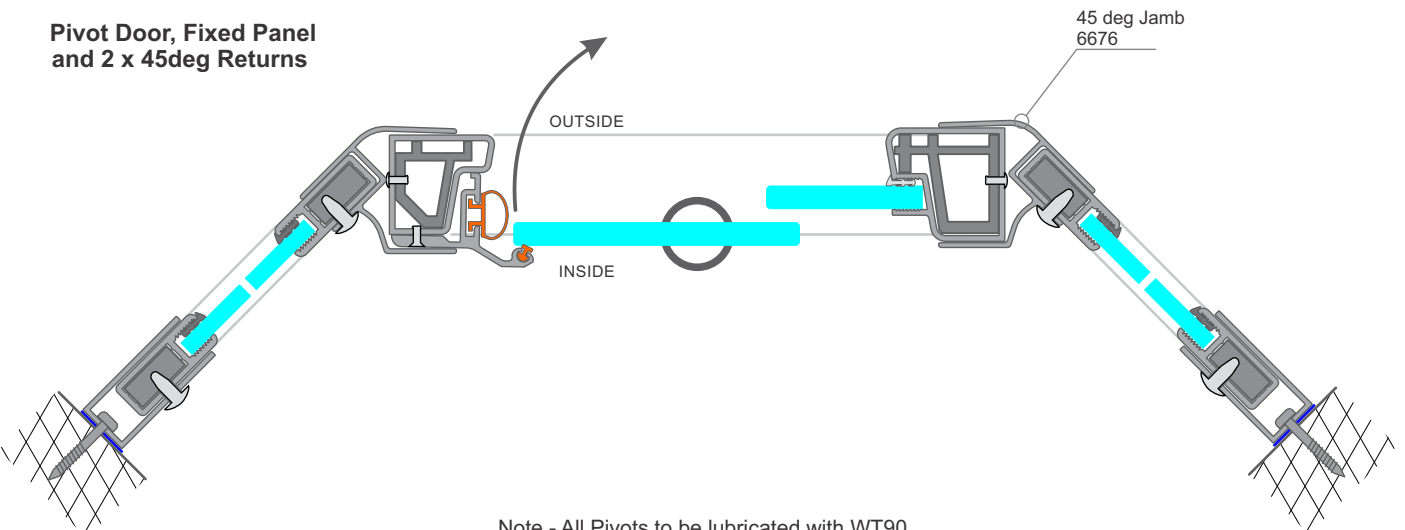
Pivot Door, Fixed Panel and 90deg Return



Note - All Pivots to be lubricated with WT90

Typical Horizontal Cross Section

Pivot Door, Fixed Panel and 2 x 45deg Returns



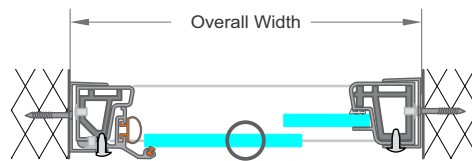
Note - All Pivots to be lubricated with WT90

Juralco Scopedor Shower Door System - Measuring, Selecting Kits

Measuring
Pivot Door and Fixed Panel

Note - Standard height 1830mm,
some models available at 1930mm high.

Scope	Standard	Overall	Width	Door Entry
Model	Height	Min	Max	Width
640 Door	1830	640	680	440
700 Door	1830	700	780	475
780 Door	1830/1930	780	860	500
860 Door	1830/1930	860	930	560
930 Door	1830	930	1000	610
950 Door	1930	950	1020	640
1170 Door	1830/1930	1170	1240	720

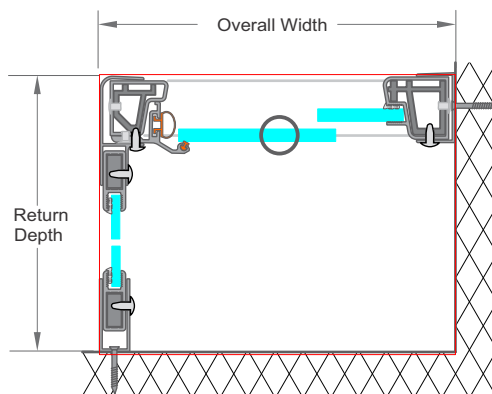


Note - Also available as complete custom build

Measuring, Selection
Pivot Door, Fixed Panel
and 90 deg Return

Note - Standard height 1830mm,
some models available at 1930mm high.

Scope	Standard	Return	Depth	Panel
Model	Height	Min	Max	Depth
670 Return	1830	670	705	630
710 Return	1830	710	745	670
770 Return	1830	770	805	730
790 Return	1830	790	825	750
830 Return	1830	830	865	790
850 Return	1830	850	885	810
870 Return	1830	870	905	830
880 Return	1930	880	915	845
910 Return	1830	910	945	870
950 Return	1830	950	985	910
970 Return	1930	970	1005	930



Note - Also available as complete custom build

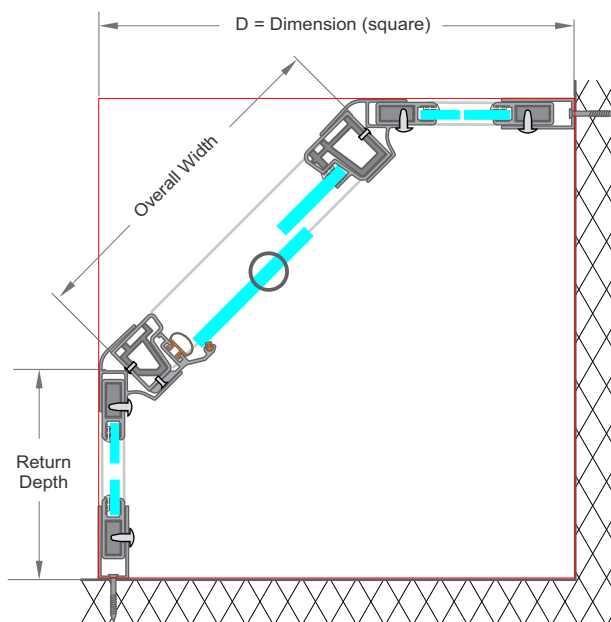
Measuring, Selection
Pivot Door, Fixed Panel
and 2 x 45 deg Returns

Note - Standard height 1830mm,
both models available at 1930mm high.

Scope	Standard	Return	Depth	Panel
Model	Height	Min	Max	Depth
400 45deg	1830/1930	400	440	394
460 45deg	1830/1930	460	480	452

To Calculate Approx Dimension D, using
Door and Returns in middle of adjustment range

Return	Door	Square
RT	W	D
420	670	890
420	740	940
420	820	1000
420	900	1060
420	970	1100
420	985	1120
420	1200	1270
470	670	940
470	740	990
470	820	1050
470	900	1100
470	970	1160
470	985	1170
470	1200	1320



Note - Also available as complete custom build

Juralco Scopedor Shower Door System - Glass for Kits

Glass Order

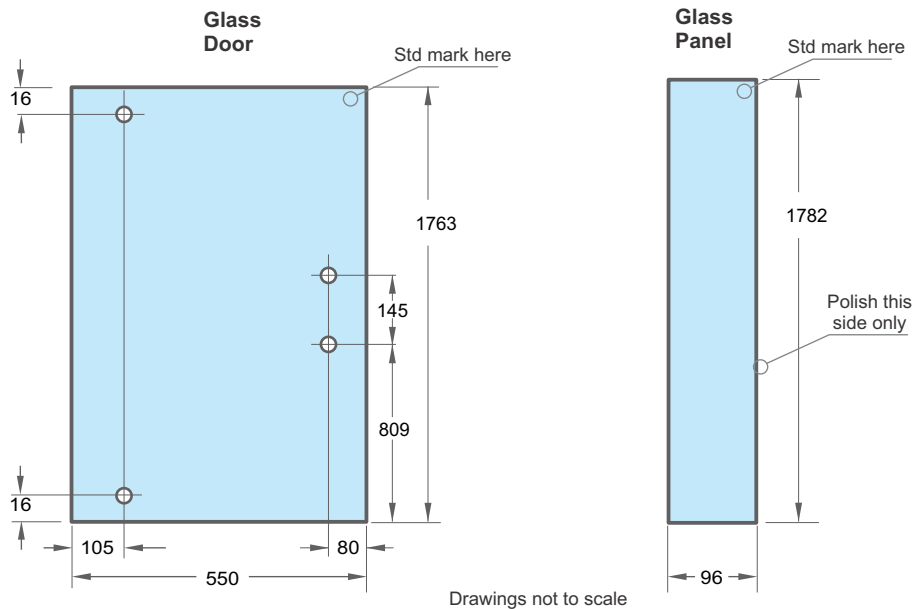
For Scope 640 Door

Glass Door

Glass - 6mm Toughened
Holes - 4 x 12mm dia
Edges - Polish all four

Glass Panel

Glass - 6mm Toughened
Edges - Polish 1 x long side only, rough arris others



Note - All Glass must have Toughened Safety Glass Stamp

Drawings not to scale

Glass Order

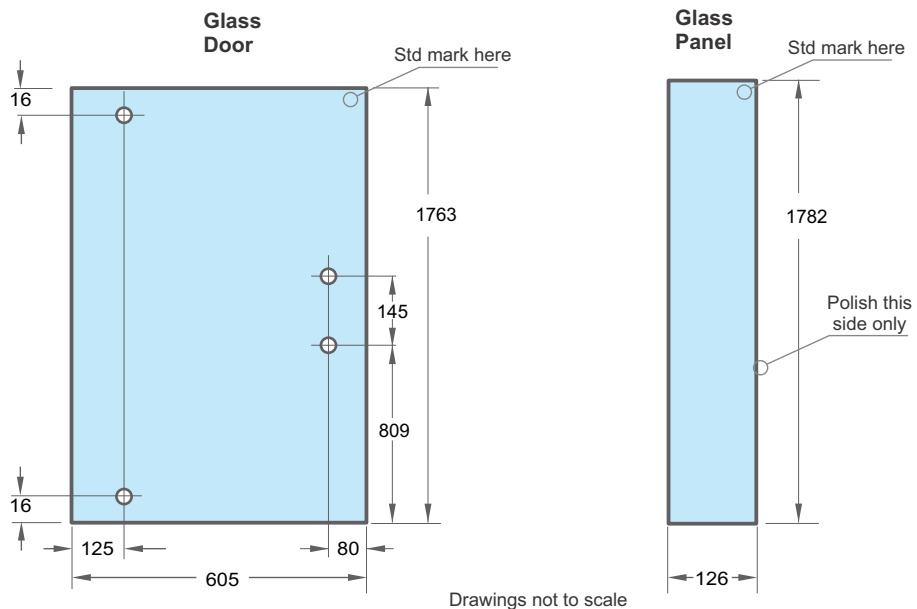
For Scope 700 Door

Glass Door

Glass - 6mm Toughened
Holes - 4 x 12mm dia
Edges - Polish all four

Glass Panel

Glass - 6mm Toughened
Edges - Polish 1 x long side only, rough arris others



Note - All Glass must have Toughened Safety Glass Stamp

Drawings not to scale

Glass Order

For Scope 780 Door

Glass Door

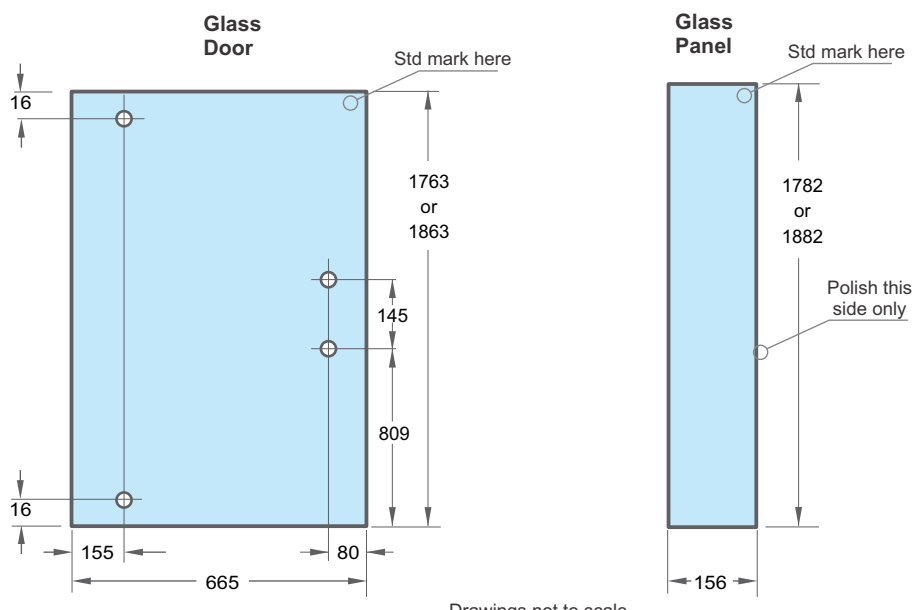
Glass - 6mm Toughened
Holes - 4 x 12mm dia
Edges - Polish all four

Glass Panel

Glass - 6mm Toughened
Edges - Polish 1 x long side only, rough arris others

Note

Choice of two Heights



Note - All Glass must have Toughened Safety Glass Stamp

Drawings not to scale

Juralco Scopedor Shower Door System - Glass for Kits

Glass Order

For Scope 860 Door

Glass Door

Glass - 6mm Toughened
Holes - 4 x 12mm dia
Edges - Polish all four

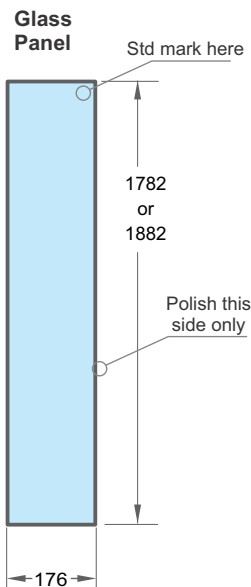
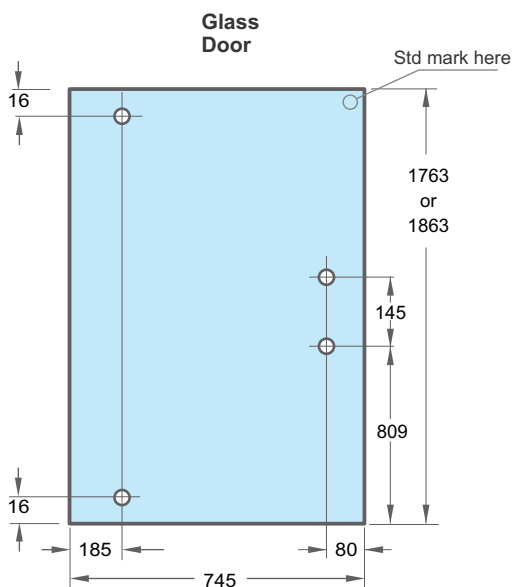
Glass Panel

Glass - 6mm Toughened
Edges - Polish 1 x long
side only, rough arris others

Note

Choice of two Heights

Note - All Glass must have
Toughened Safety Glass Stamp



Drawings not to scale

Glass Order

For Scope 930 Door

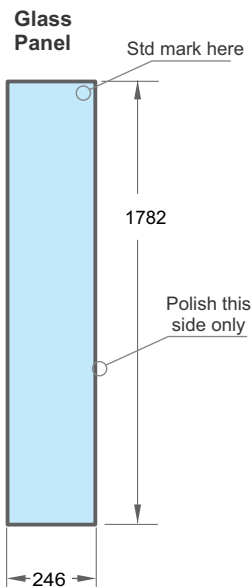
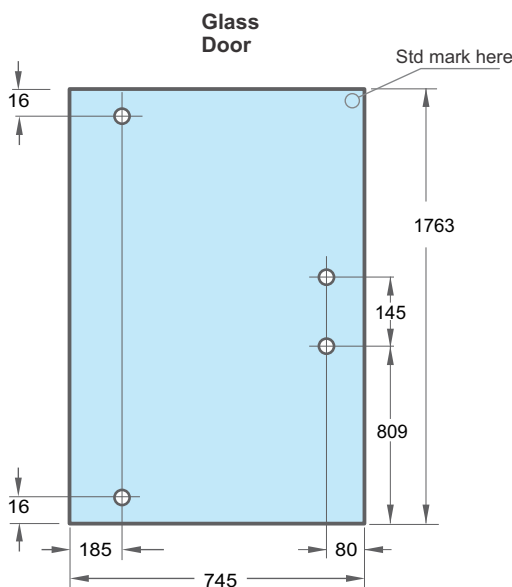
Glass Door

Glass - 6mm Toughened
Holes - 4 x 12mm dia
Edges - Polish all four

Glass Panel

Glass - 6mm Toughened
Edges - Polish 1 x long
side only, rough arris others

Note - All Glass must have
Toughened Safety Glass Stamp



Drawings not to scale

Glass Order

For Scope 950 Door

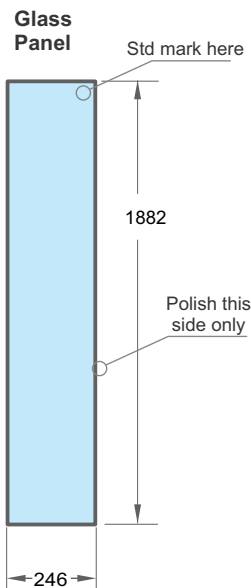
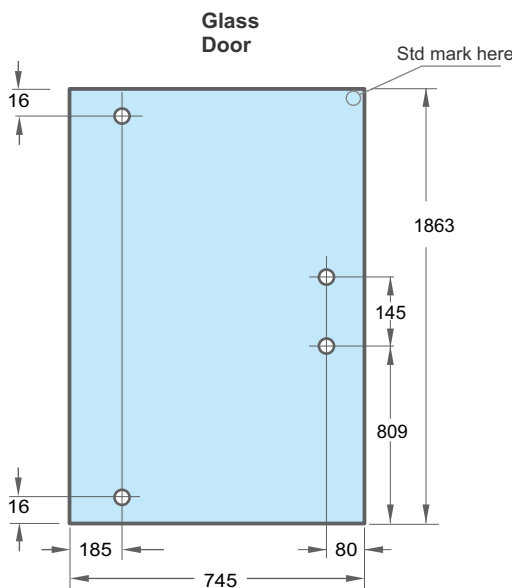
Glass Door

Glass - 6mm Toughened
Holes - 4 x 12mm dia
Edges - Polish all four

Glass Panel

Glass - 6mm Toughened
Edges - Polish 1 x long
side only, rough arris others

Note - All Glass must have
Toughened Safety Glass Stamp



Drawings not to scale



JURALCO

www.juralco.co.nz ph (09) 478 8018

Juralco Scopedor Shower Door System

Issue 1/17

Page 10

Juralco Scopedor Shower Door System - Glass for Kits

Glass Order

For Scope 1170 Door

Glass Door

Glass - 6mm Toughened
Holes - 4 x 12mm dia
Edges - Polish all four

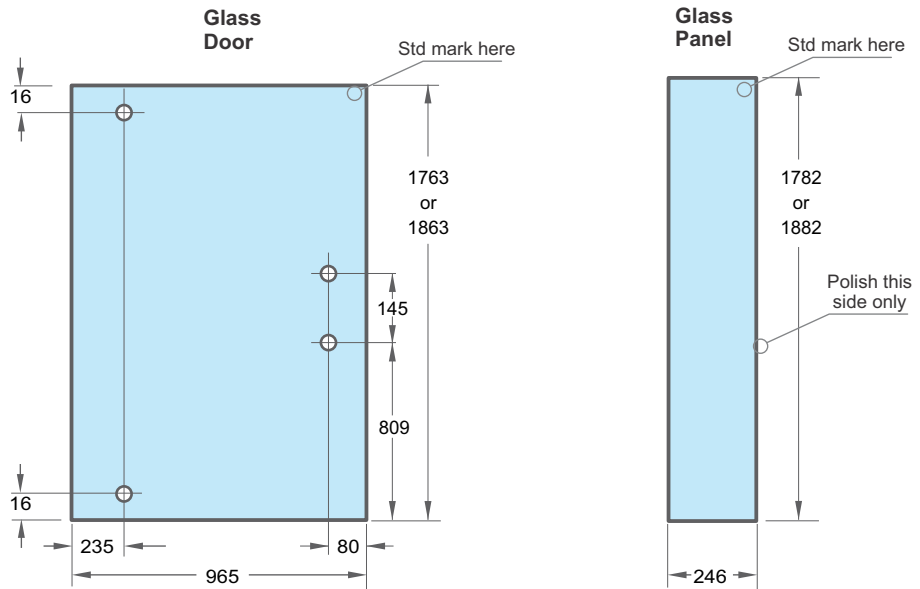
Glass Panel

Glass - 6mm Toughened
Edges - Polish 1 x long side only, rough arris others

Note

Choice of two Heights

Note - All Glass must have Toughened Safety Glass Stamp



Drawings not to scale

Glass Order

45 and 90 deg Return Glass Panel

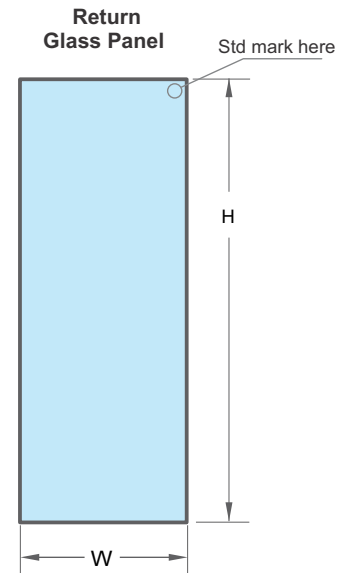
Glass Panel

Glass - 4mm Toughened
Edges - Rough arris all edges

90 deg RETURNS	W	H
Scope 670 Return	588	1782
Scope 710 Return	628	1782
Scope 770 Return	688	1782
Scope 790 Return	708	1782
Scope 830 Return	748	1782
Scope 850 Return	768	1782
Scope 870 Return	788	1782
Scope 880 Return	798	1882
Scope 910 Return	828	1782
Scope 950 Return	868	1782
Scope 970 Return	888	1882

2 x 45 deg RETURNS	W	H
Scope 400 45deg Return	348	1782/1882
Scope 460 45deg Return	408	1782/1882

Note - All Glass must have Toughened Safety Glass Stamp



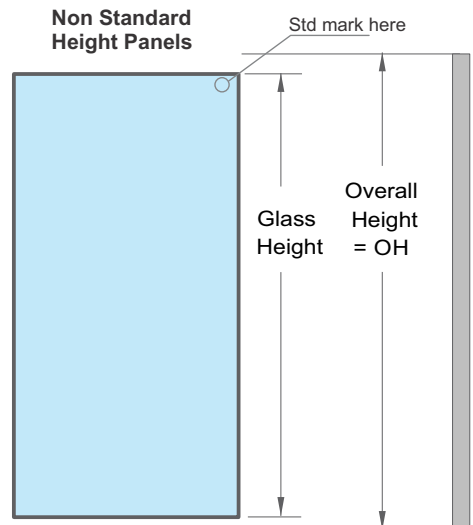
Drawings not to scale

Glass Order and Cutting

Standard unit height = 1830mm

Non Standard Heights

Overall Height = OH	
Door Glass	OH - 67mm
Fixed Door Glass	OH - 46mm
Returns Glass	OH - 46mm

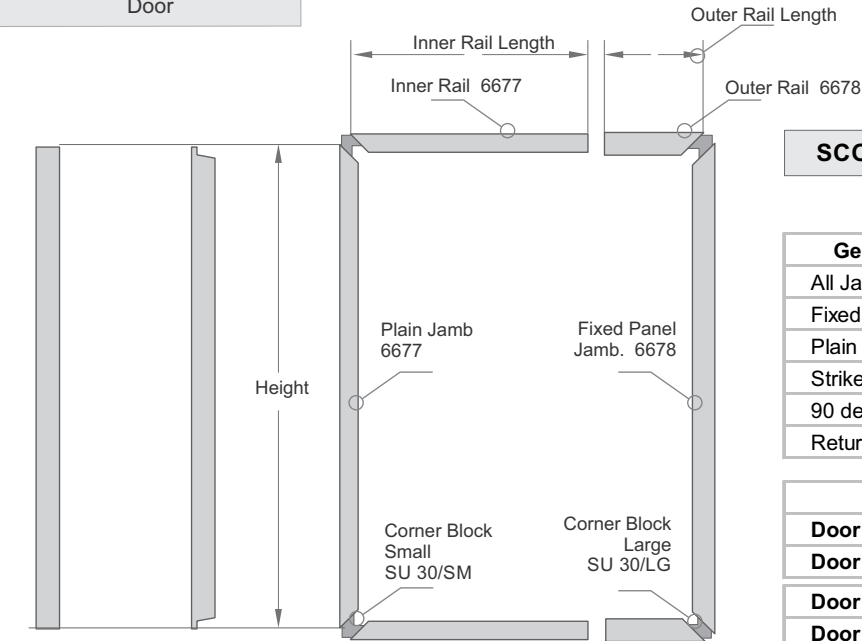


Note - All Glass must have Toughened Safety Glass Stamp

Drawings not to scale

Juralco Scopedor Shower Door System - Extrusion for Kits

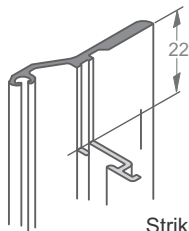
Extrusion Cutting Door



All General Extrusions
Square ends

Striker 2989
Notch Ends

Door Extrusions
Miter and square ends



Striker 2989
Notch Ends

SCOPEODOR CUTTING CALCULATIONS

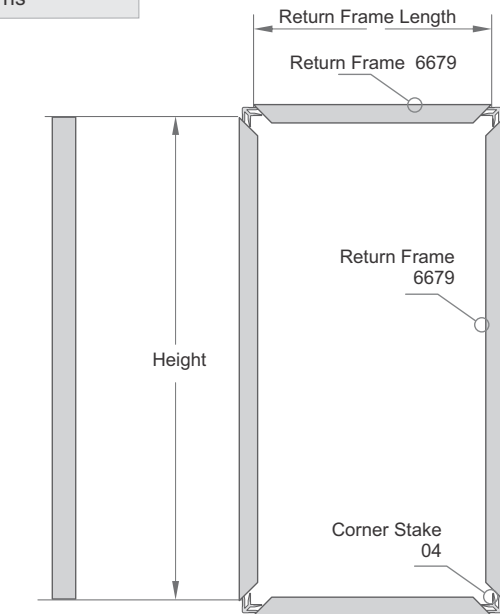
Note - Choose appropriate height

General Extrusions	Part No	Height
All Jamb Caps	6674,5,6	1830/1930
Fixed Panel Jamb	6678	1830/1930
Plain Jamb	6677	1830/1930
Striker	2989	1830/1930
90 deg Return Frame	6679	1830/1930
Return Wall Channel	6675	1830/1930

Extrusions	Part No	Length
Door 640 - Outer Rail	6678	120
Door 640 - Inner Rail	6677	580
Door 700 - Outer Rail	6678	150
Door 700 - Inner Rail	6677	635
Door 780 - Outer Rail	6678	180
Door 780 - Inner Rail	6677	695
Door 860 - Outer Rail	6678	200
Door 860 - Inner Rail	6677	775
Door 930 - Outer Rail	6678	270
Door 930 - Inner Rail	6677	775
Door 950 - Outer Rail	6678	270
Door 950 - Inner Rail	6677	775
Door 1170 - Outer Rail	6678	270
Door 1170 - Inner Rail	6677	995

Note - Also available as complete custom build

Extrusion Cutting Returns



All General Extrusions
Square ends

Return Extrusions
Miter ends

SCOPEODOR CUTTING CALCULATIONS

Extrusions	Part No	Length
Return 670 - Rail	6679	630
Return 710 - Rail	6679	670
Return 770 - Rail	6679	730
Return 790 - Rail	6679	750
Return 830 - Rail	6679	790
Return 850 - Rail	6679	810
Return 870 - Rail	6679	830
Return 880 - Rail	6679	840
Return 910 - Rail	6679	870
Return 950 - Rail	6679	910
Return 970 - Rail	6679	930

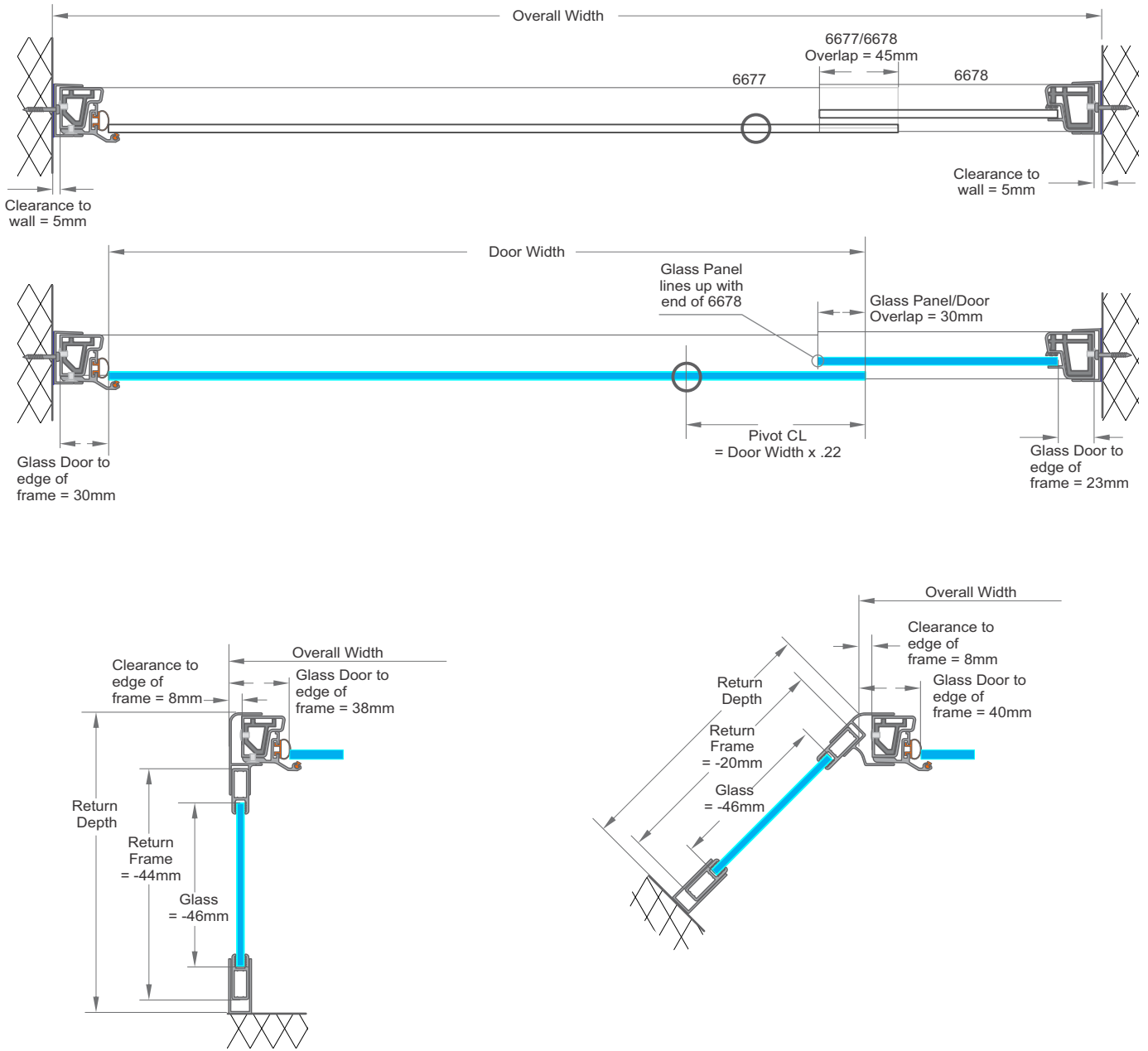
45 deg Return 400 - Rail	6679	394
45 deg Return 460 - Rail	6679	452

Note - Also available as complete custom build

Juralco Scopedor Shower Door System - Extrusion for Custom Builds

Glass and Extrusion Cutting Allowances for Custom Builds

All Horizontal Measurements



Glass and Extrusion Cutting Allowances for Custom Builds

All Vertical Measurements

Overall Height = OH	
Door Glass	OH - 67mm
Fixed Door Glass	OH - 46mm
Returns Glass	OH - 46mm
Door, Return Extrusions	OH

Juralco Scopedor Shower Door System - Assembly

Frame, Doors Assembly

Note: Prior to delivering to site, unpack and check all items

Note - Check all Glass is marked with Toughened Safety Glass Stamp

- 1 - Inspect all extrusions for damage, surface defects. Assemble all necessary components. Ensure workplace is clean.
- 2 - Join the 6678 mitered corners using the SU 30/LG corner blocks. Pop rivet in place.
- 3 - Join the 6677 mitered corners using the SU 30/SM corner block. Pop rivet in place.
- 4 - File smooth the inside surfaces of the square cut 6678 rails and the outsides of the square cut 6677 rails.
- 5 - Install the glass into the 6678 channels and glaze on outside face using the 31 clear wedge, polished edge to outside.
- 6 - Check the 6677 frame inner rails will slide smoothly into the fixed panel 6678 extrusion.
- 7 - Mount striker 2989 on to outer frame 6677 after fitting EXO7 clear bumper and EXO9 bulb seal to striker. Attach striker to 6677 using 73AS44 counter sunk rivets. Ensure striker is flush with outer frame. Attach Door set out block ADJ to inner frame with masking tape.
- 8 - Lay out 6 mm glass door panel and check top and bottom widths and height are correct.
- 9 - Fit 2 x pivot block assemblies EX 01 to the 12mm holes in the door :
Assemble the Pivot Spacer set EX 03, the Pivot Block Set EX 01, on to the glass Door using the Pivot Screw EX 12, Screw head to inside. Top and Bottom.
- 10 - Lay the door glass panel square onto the frame allowing the leading edge of the glass to compress the striker plate bulb seal about 1mm. The female parts of Pivot Block Set EX 01 should line up with the 6677 rails.
- 11 - Ensure that they are correctly seated before drilling through appropriate holes and riveting (using a long nosed rivet gun) using 73AS4344 monel rivets.
- 12 - Fit EX O3 pivot block plugs into both blocks to conceal rivets.
- 13 - Snap on EXO6 Pivot Block covers.
- 14 - Clean off all fingermarks, pack.

Note - All Pivots to be lubricated with WT90

Return Assembly

Note: Prior to delivering to site, unpack and check all items

Note - Check all Glass is marked with Toughened Safety Glass Stamp

- 1 - Inspect all extrusions for damage, surface defects. Assemble all necessary components. Ensure workplace is clean.
- 2 - Lay out the 4 mm glass return panel and check top and bottom widths and height are correct.
- 3 - Place the 6679 extrusion over the glass. Join the 6679 mitered corners using the 04 corner stakes.
- 4 - Square up then glaze on the outside face using the 31 clear wedge.
- 5 - Clean off all fingermarks, pack.

Juralco Scopedor Shower Door System - Installation

Example below is for a 90deg Return Type

1 - Unpack, inspect for damage. Check Door is correct one for this job. Assemble tools.

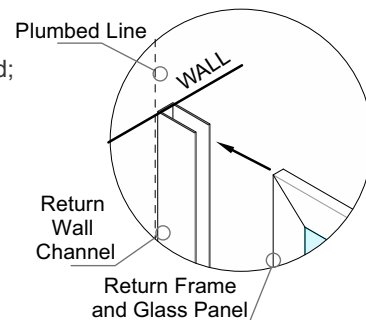
2 - Measure up the space and pencil in a plumb vertical line on both walls, on the outside line of the extrusions, ie one for the Return Panel and one for the Fixed Panel/Door.

3 - Fit the Return Wall Channel to the wall on the and fasten with 4 off 8 x 38 mm screws supplied; 50mm from the top, 2 x middle and 100mm from the bottom - evenly spaced.

A full bead of silicone sealant should be applied to the back face of the Channel before screwing to wall.

4 - Insert the Return Frame and Glass Panel. A full bead of silicone sealant should be applied to the Bottom face of the Return Frame.

Out of squareness of the Wall/Floor will be taken up by the Channel.



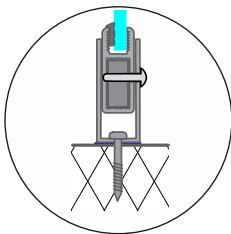
5 - Insert the 90 deg Jamb onto the Return Frame and Glass Panel.

Any remaining out of squareness of the Wall/Floor will be taken up by the Jamb

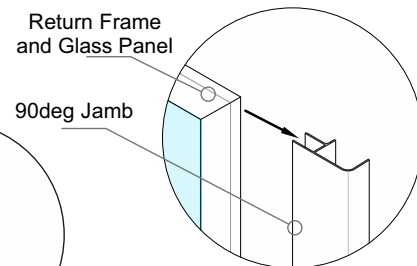
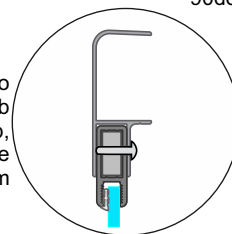
6 - Drill 3 x 3.2mm holes through The Return Wall Channel to the Return Frame and 90 Deg Jamb into the Return Frame from the inside.

Insert White Pop rivets and secure in place

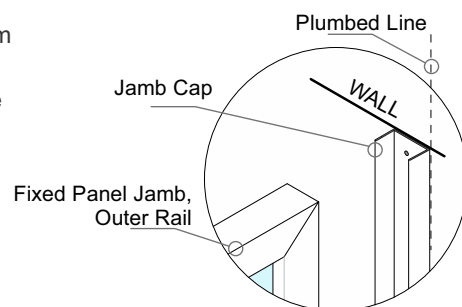
Rivet Return Frame to Return Wall Channel.
3 x rivets 100mm from top, middle and 100mm from bottom



Rivet Return Frame to 90deg Jamb
3 x rivets 100mm from top, middle and 100mm from bottom



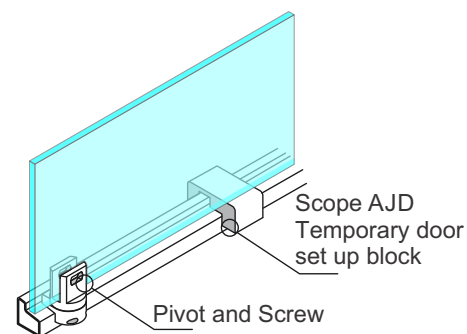
7 - Fit the Jamb Cap for the Fixed Panel/Door to the wall and fasten with 4 off 8 x 38 mm screws supplied; 50mm from the top, 2 x middle and 100mm from the bottom - evenly spaced. A full bead of silicone sealant should be applied to the back face of the Jamb Cap before screwing to wall.



8 - Slide the Door/ Fixed Panel into the Jamb Cap now attached to the wall.

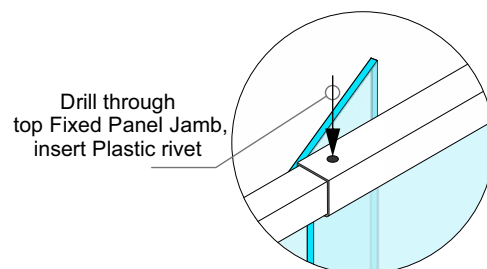
Then with the ADJ Door Setup Block fitted, (taking the weight of the glass door) expand the door out until it enters the 90 Deg Jamb.

9 - Check that the glass Door is touching the Striker Bumper and Bulb Seal evenly from the top of the door to the bottom.



10 - With the door expanded into the Jamb Cap and 90 deg Jamb and the ADJ

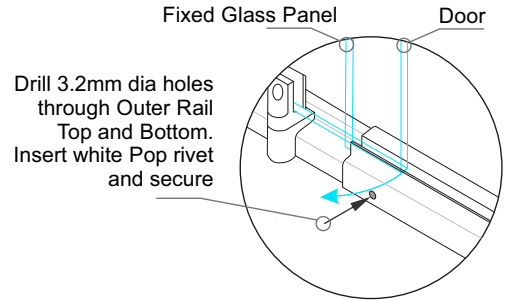
Door Setup Block still fitted, drill through the top of the door, above the Fixed Panel with a 4.2mm drill then drive in a plastic rivet with a hammer. Open the door, remove the Adjustor Block and check that the door opens and closes and that the top edge of the Door Panel is level with the head Rail.



Juralco Scopedor Shower Door System - Installation

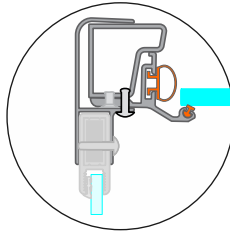
Example below is for a 90deg Return Type

- 11 - After checking the door operation, drill through the Outer Rail top and bottom and pop rivet in place

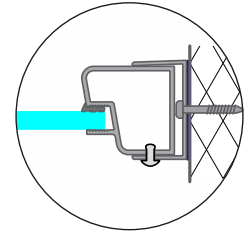


- 12 - After rechecking the door, drill 3 x 3.2mm holes through the Jamb Cap into the Fixed Panel Jamb, and through the 90deg Jamb into the Inner Plain Jamb+ Striker. All on the inside of the Shower Enclosure. Insert White Pop rivets and secure in place

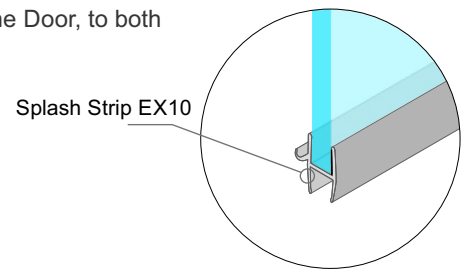
Rivet Inner Plain Jamb + Striker to 90deg Jamb. 3 x rivets 100mm from top middle and 100mm from bottom



Rivet Fixed Panel Jamb to Jamb Cap. 3 x rivets 100mm from top, middle and 100mm from bottom

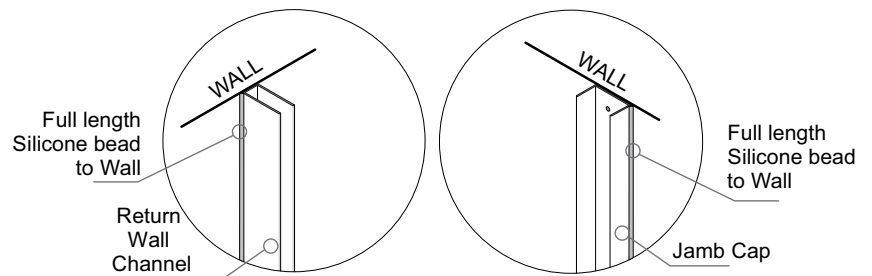


- 13 - Remove the AJD set up block. Attach the Splash strip EX 10 to the bottom of the Door, to both sides of the Pivot. Hook to inside.



- 14 - Apply Silicon Sealer around all of the outside joints of the Shower Door Frame and Jamb Caps. Take special care not to get silicon clothing or any areas other than joints as above. If you get the sealer smeared anywhere on the frame, wipe it off with a clean dry cloth, then clean off residue with a cloth moistened with methylated spirits.

NOTE. Once the silicon has set, it is not possible to clean it off!!!



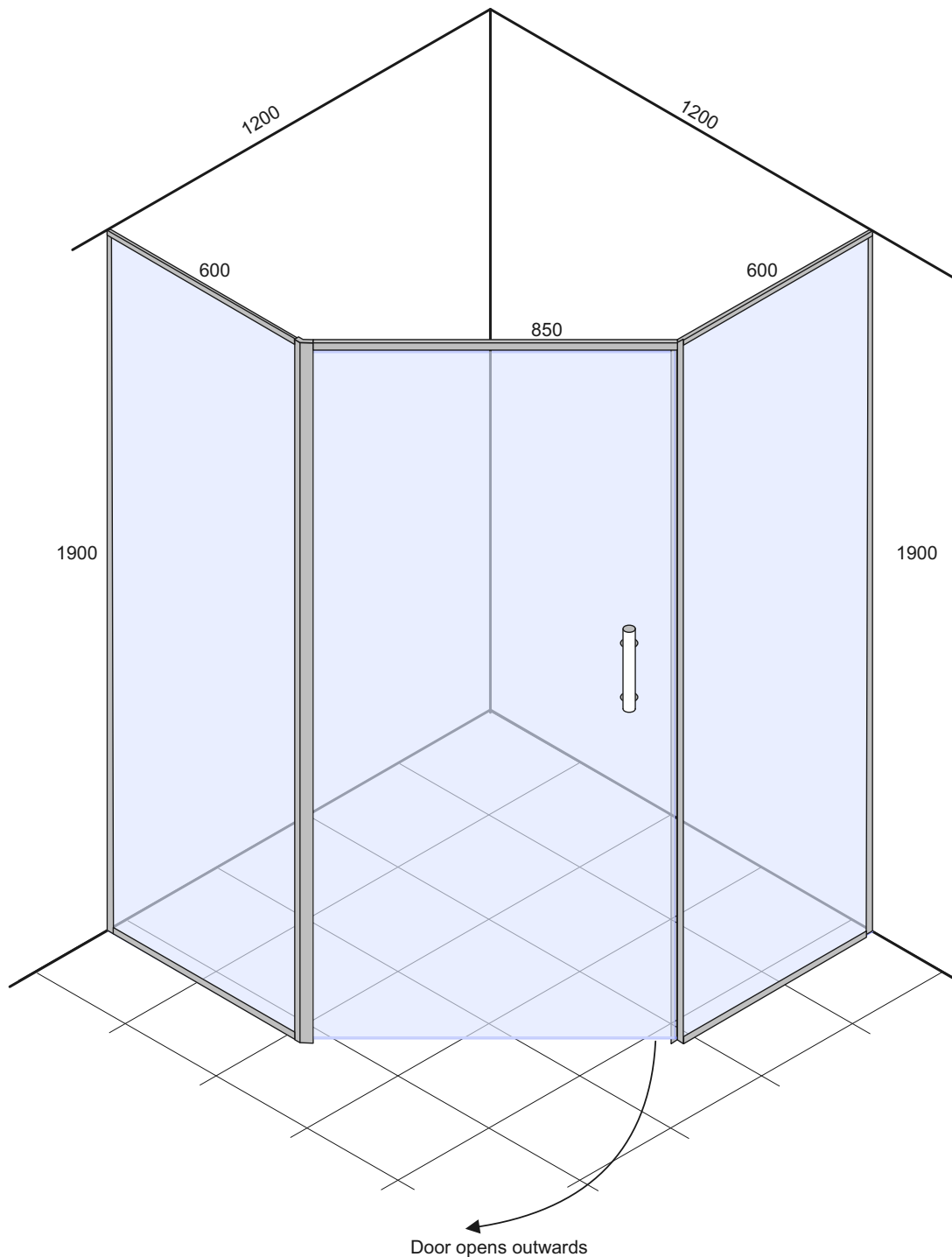
- 15 - The closing adjustment on the Shower Door is preset at the factory, (Glass door edge compresses the Bulb Seal) but if after fitting you find that the door is binding or alternatively is not staying shut, the following adjustment can be made: When the door is fully closed it is held shut by the round sealing strip. Loosen the top and bottom Pivot Screws half to one full turn. Then tap the door in or out with the palm of the hand until the correct closing action is achieved. Retighten the Pivot Screws.

- 16 - Clean off all fingerprints, leave site tidy and clean.

Juralco Scope Project Shower Door System - General

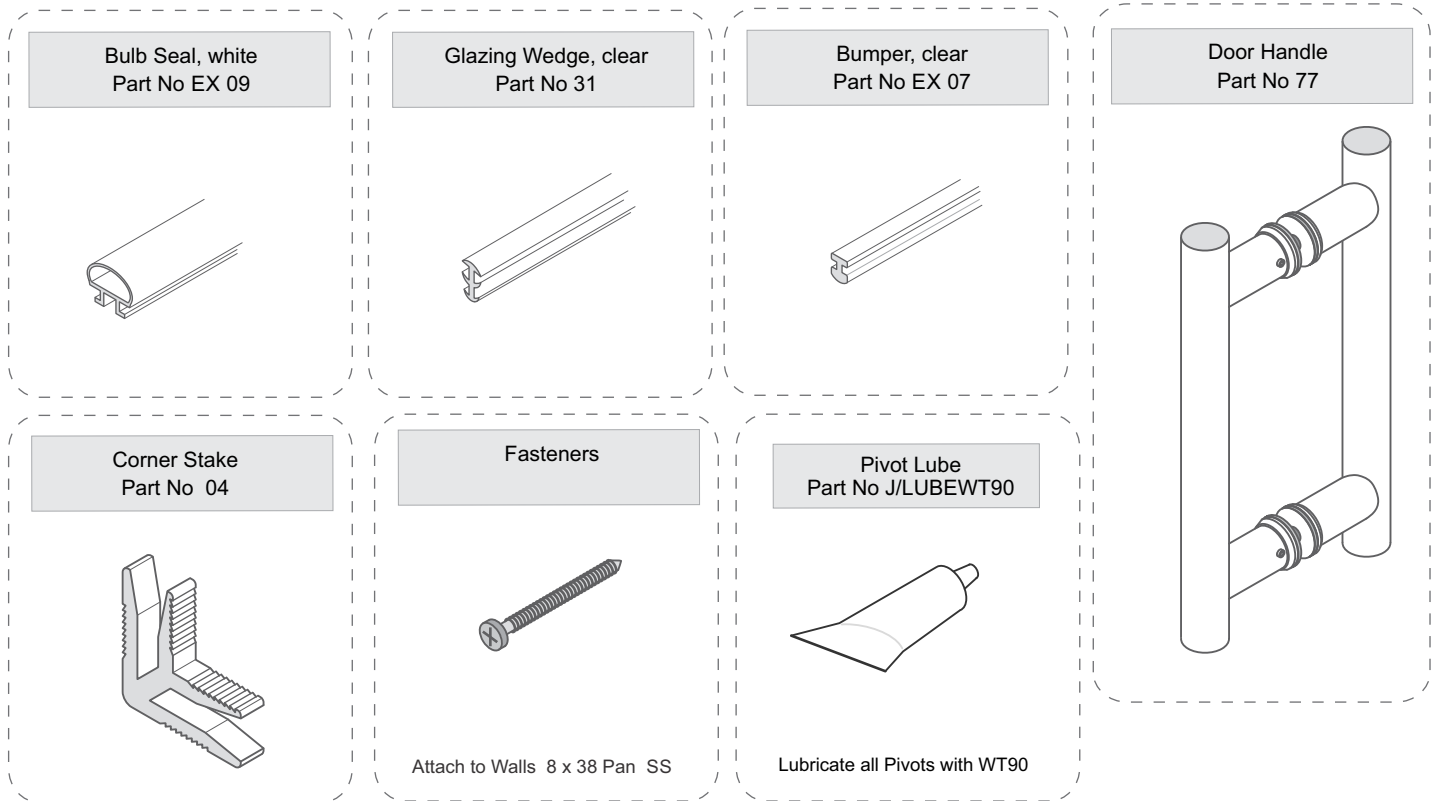
General Description

- The Scope Project Shower Pivot Door system is designed primarily for Retirement homes and Hospitals where wheelchair access is required.
- All Scope showers are constructed from our propriety range of aluminium extrusions and components, used in the Scopedoor and Pivot systems
- Pivot Doors are 6mm and Return Fixed Panels 4mm toughened glass, to NZS 4233 Part 3 for human impact requirements.
- Glass stocked as Standard Clear. Available to special order - Frosted or Patterned.
- Available in White powdercoat or Anodised polished bright or natural .
- Designed for installation direct on to suitable flooring.

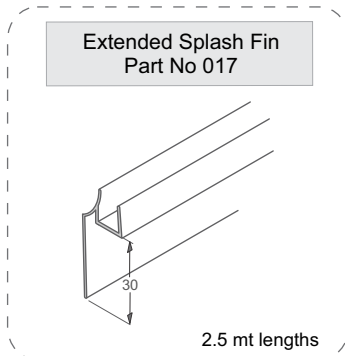
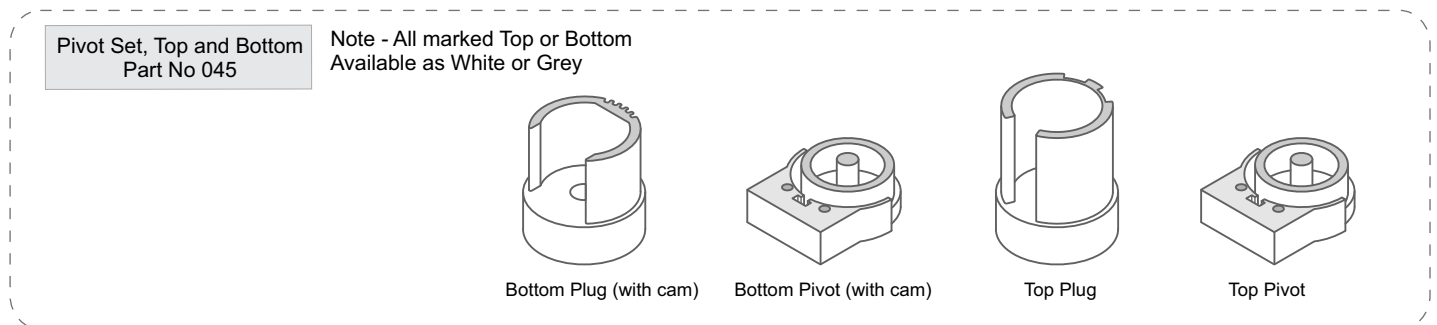


Door opens outwards

Juralco Scope Project Shower Door System - Components

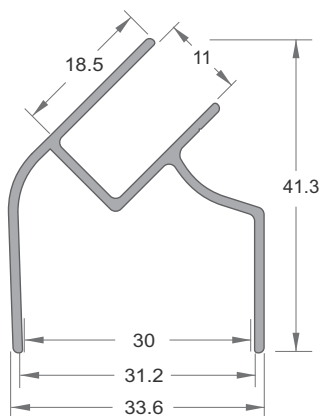


The components above are all from the Scopedor manual

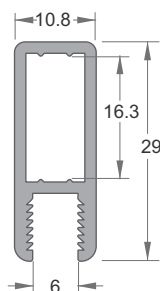


The components above are all from the Pivot Shower manual

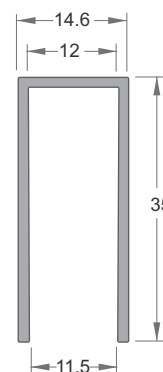
Juralco Scope Project Shower Door System - Extrusions



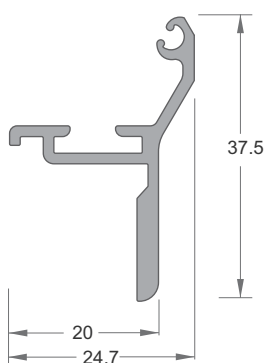
45 DEG JAMB
Part No 6676
(ID at front, compress to 30mm)



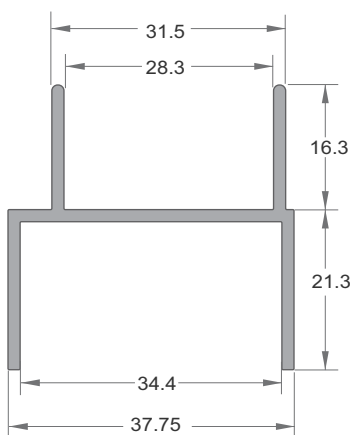
RETURN FRAME
Part No 6679



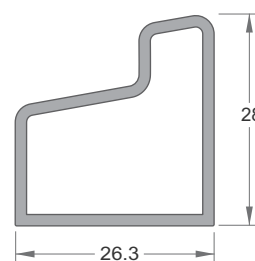
RETURN WALL CHANNEL
Part No 3838



STRIKER
Part No 2989

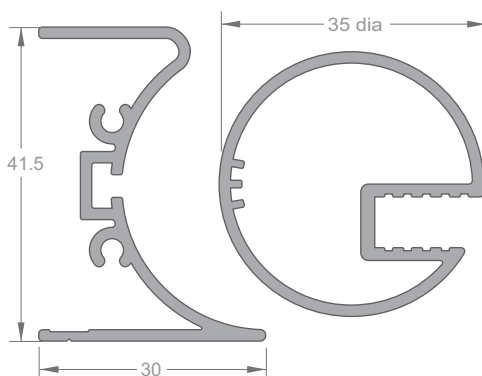


JAMB ADAPTER
Part No 506
(Used with 6676 and 501)



PLAIN JAMB, INNER RAIL
Part No 6677

The Extrusions above are all from the Scopedoor manual

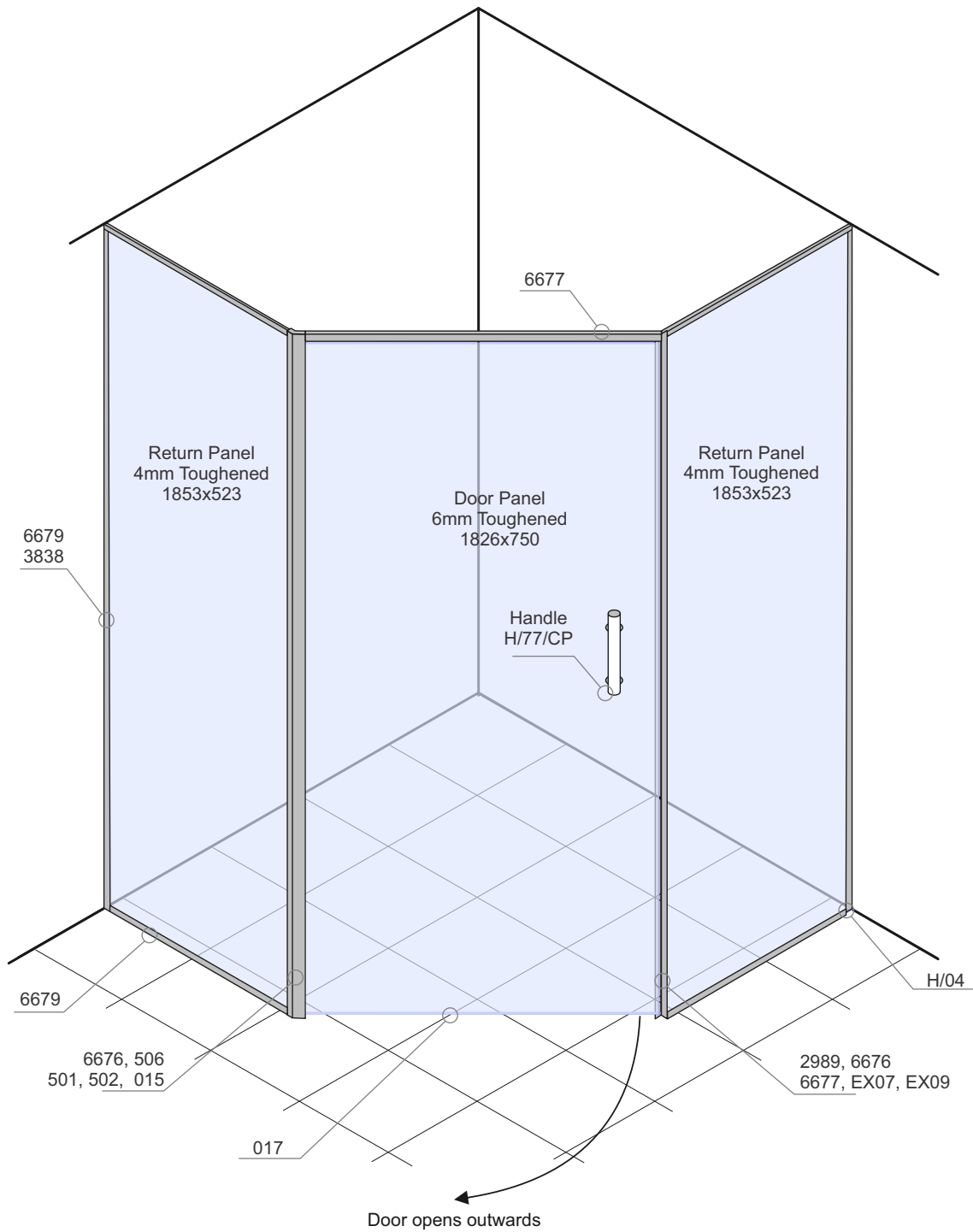


PIVOT JAMB
Part No 501

PIVOT STILE
Part No 502

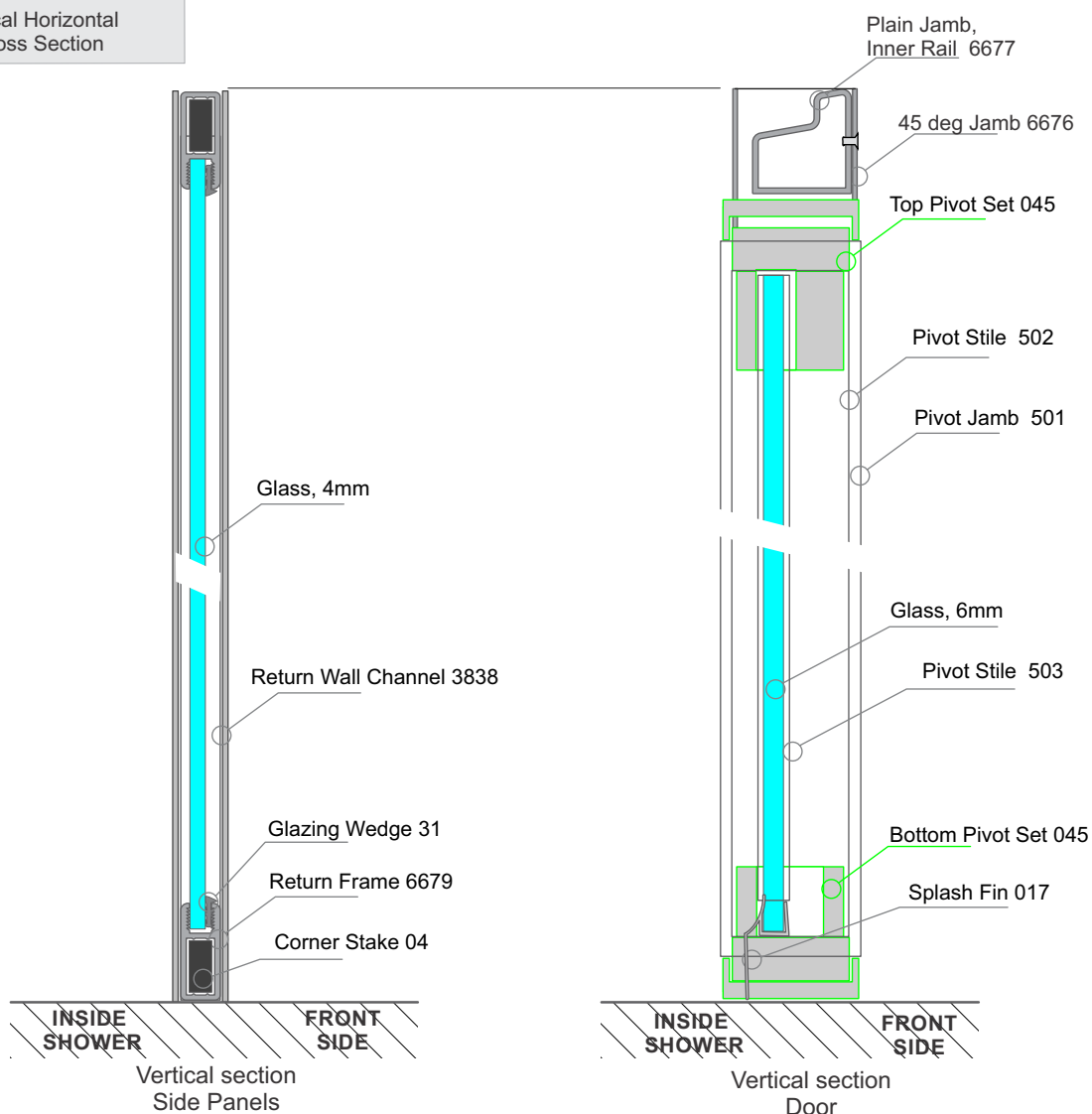
The Extrusions above are from the Pivot Shower manual

Juralco Scope Project Shower Door System - Components and Glass Sizes



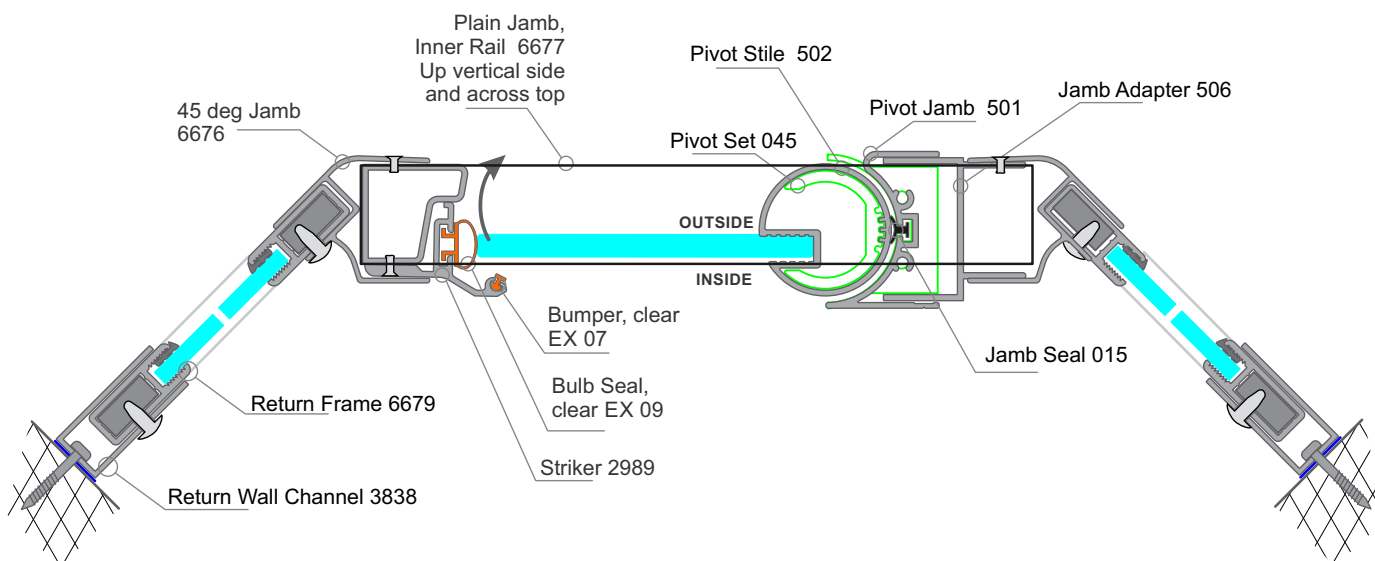
Juralco Scope Project Shower Door System - Sections

Typical Horizontal Cross Section



Typical Horizontal Cross Section

Pivot Door and 2 x 45deg Returns



Note - All Pivots to be lubricated with WT90



Juralco Scope Project Shower Door System - Cutting

Measuring, Selection
Scope Project. Door
and 2 x 45 deg Returns

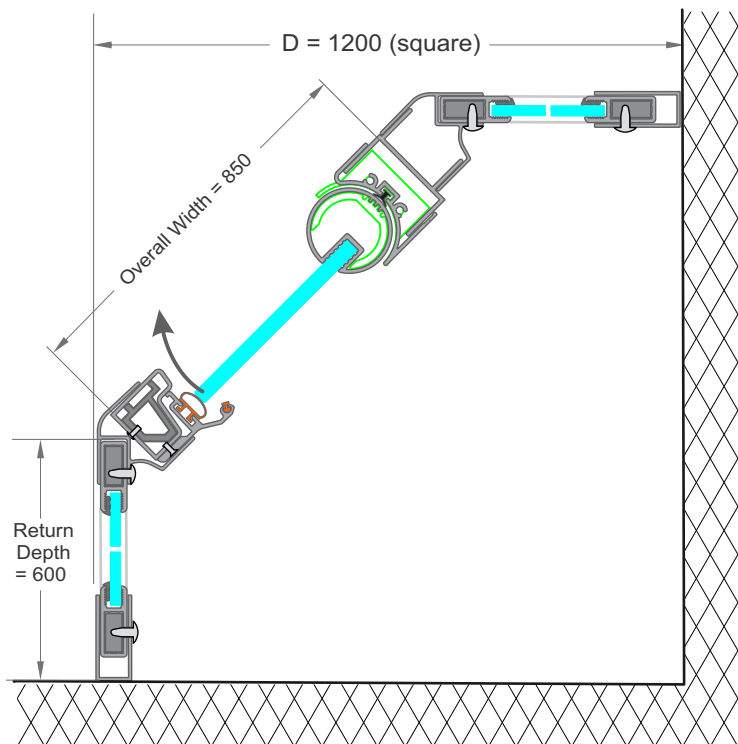
Note: Prior to delivering to site, unpack and check all items

Cutting Sizes		
Door	No	Size
H/6677	1	1900
	1	815
H/2989	1	1900
H/501	1	1847
H/502	1	1827
H/506	1	1900

Cutting Sizes		
Returns	No	Size
H/6679	4	1900
	4	570
H/6676	2	1900
H/3838	2	1900

Components	
All	No
Bulb Seal Ex/09/2.1	1
Bumper EX/07	1
Pivot Set H/045, Grey	1 x pr
Handle H/77/CP	1
Glazing Wedge 31	8
Jamb Seal 015	1
Splash Fin 017	1
Corner Stakes 04	8

Cutting Sizes		
Glass	No	Size
Door - 6mm	1	1826x750
Returns - 4mm	2	1853x523



Glass Order

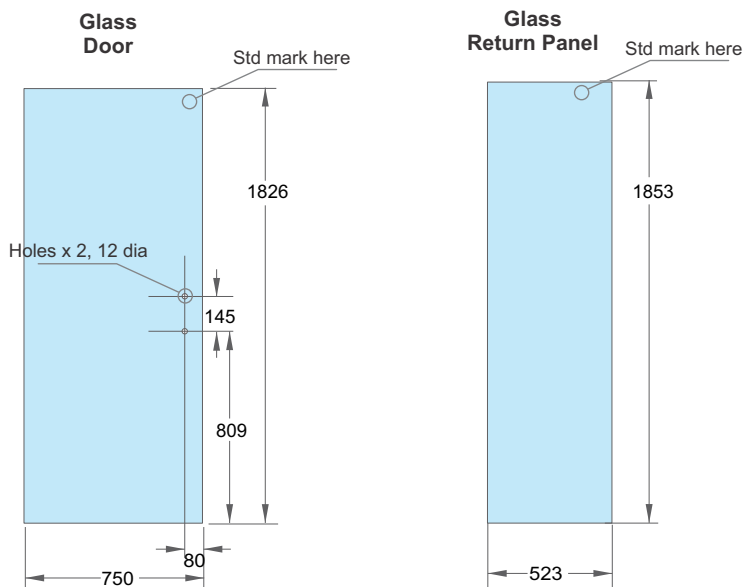
For Scope Project Door

Glass Door

Glass - 6mm Toughened
Holes - 2 x 12mm dia
Edges - Polish all four

Glass Return Panel

Glass - 4mm Toughened
Edges - Rough arris all



Note - All Glass must have
Toughened Safety Glass Stamp