



Juralco Edge Canopy System

Juralco Aluminium Building Products Ltd designs and distributes specialist aluminium joinery systems through a national network of franchised fabricators and agents.

For more than 25 years we have been at the forefront of specialist aluminium door and window products suitable for New Zealand joinery and building methods. Our comprehensive product range includes security and insect screens, balustrades and gates, shutters and awnings, shower screens, wardrobe doors and organisers and internal doors.

Edge Canopy Fixed Awnings are an ideal solution for entrance way shelter for homes, hotels, apartment buildings and office complexes. The high quality extruded arms and connection plates can be custom powder coated in a colour of your choice. The arms are custom made to any projection up to 1200mm and can be combined to form either a single or continuous canopy. Infills in toughened glass; clear, or tinted grey, green or bronze or as an alternative, 60mm slats.



General Notes: Infills, 10mm toughened Glass or 60mm Slat.
Glass must have a minimum strength of 100mpa. All edges polished.
Refer to details incl Wind Zone considerations on following pages
Can be multiple arms at these spacings

Juralco Edge Canopy System - Specifications, Powder Coating

Juralco Aluminium Building Products Ltd (JABP)

Specifications for Juralco Edge Canopy System

1. Scope

- This specification details the documents the Juralco Edge Canopy System refers to in relation to the New Zealand Building Code, the manufacturer's documents, products used in the System, requirements in relation to fixing and surface finishings.

2. NZBC Compliance

- The Juralco Edge Canopy System has been reviewed by Lautrec Technology Group Ltd, Engineers. Suitable for NZS3604 Low, Medium, High, Very High and Extra High Wind Zones as noted on the following detail pages, when attached to buildings within the scope of NZS3604

3. Manufacturer's Documents

- The Juralco Edge Canopy System manual details all extrusions and components used for the fabrication and installation/fixing of the system.
- Manuals are available from Juralco Aluminium Building Products Ltd
48 Bruce McLaren Rd, Henderson, Auckland
Phone 09 478 8018 Fax 09 478 7883 Email specify@juralco.co.nz

4. Products

- Only extrusions, components and hardware supplied by or specified by JABP may be used in the Edge Canopy System
- Aluminium extrusions, components and hardware – unless specified are manufactured to 6060 T5 specifications
- Stainless Steel components, hardware, fixings – all components to 316 grade
- Glass - all glass used in the Juralco Edge Canopy System must be toughened and conform to the specifications as listed in the Juralco Edge Canopy manual with each panel conforming to AS/NZS 2208 as confirmed by the Safety Stamp detailing the manufacturer's description and licence number.

5. Surface Finishing

- Juralco Aluminium Building Products Ltd is a Dulux Registered Applicator site, registration number 2101. JABP uses only Dulux branded powder coating materials
- Dulux Duralloy® powder coating systems are suitable for properties greater than 100m from high tide level AAMA 2603 performance. Residential buildings, 3 levels max. Warranty 10 yrs
- Dulux Duralloy Plus® powder coating systems are suitable for properties greater than 10m from high tide level. AAMA 2603 performance. Residential and Light commercial buildings, 3 levels max Warranty 15 yrs
- Dulux Duratec® powder coating systems are suitable for properties greater than 10m from high tide level AAMA2603 and 2604 performance. All Residential and Commercial buildings. Warranty 25 yrs

5. Installation and Fixing

- The Juralco Edge Canopy System must only be installed in accordance with the Juralco Edge Balustrade System manual

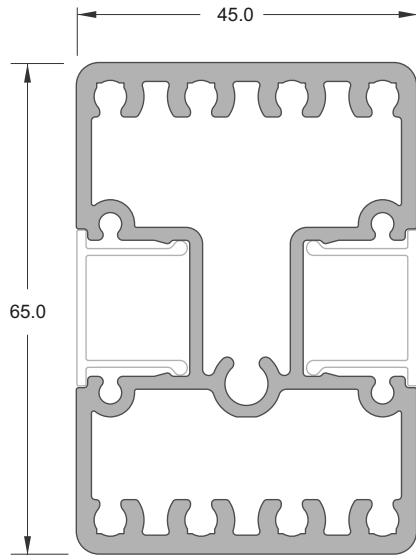
New from Jan 2023. Important information - Powder Coating systems. The new standard Dulux powder coating systems used by Juralco are Duralloy®, Duralloy Plus® (new extended performance) and Duratec®. All as per specs above.

Note - Powder coated prices listed in Juralco price books are for the standard Duralloy® or Duralloy Plus® system (same pricing). If the Duratec® system is required it must be specified upon placement of the order and will incur a surcharge – Duratec® prices on application.

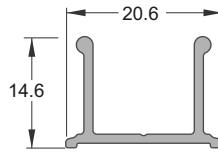
Important Information - Powder Coating Attachment to structures. A PVC Tape or similar material spacer must be used to separate powder coated aluminium items from all concrete and steel structures. Failure to do so can lead to the chemicals in the structure affecting the powder coating layer on the aluminium, leading to corrosion.

Powder Coating Care. The Dulux powder coating warranty period is conditional upon the surface being maintained in accordance with the Dulux 'Care and Maintenance Instructions'. Download from Dulux or refer to the back page of this manual.

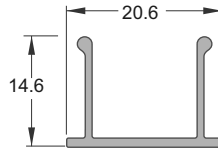
Juralco Edge Canopy System - Extrusions, Components



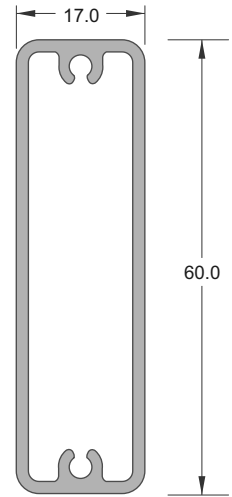
EDGE CANOPY POST
Part No JEB/212/5



REBATED INFILL CLIP
Part No JEB/218/5.8

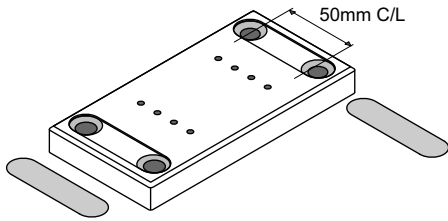


STANDARD INFILL CLIP
Part No JEB/206/5.8



INFILL
60mm SLAT
Part No JVB/019/5.3

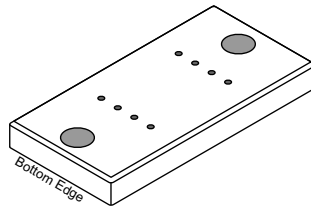
Narrow Base plate & Covers
Part No JEC 416



150mm x 75mm x 15mm,
4 x C/S holes x 10.5mm dia + Covers

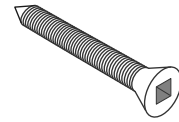
Narrow Base plate M12 Studs
Part No JEC 417

For Concrete and Steel only



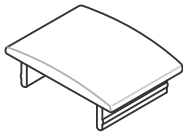
150mm x 75mm x 15mm - 2 x holes x 12.5mm dia

Post/Baseplate Screw
Part No JVBHTSCREW/50x10



50mm SS HT PK C/S sq drive screw

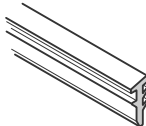
Top Cap
Part No JEC 20



Fits over Post. 66mm x 46mm

3mm Glazing Wedge
Part No JEC W10/100

For 10mm Glass



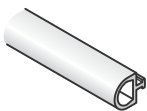
100mt Roll - PVC

Slat Attach Screw
Part No JVB Screw 25x6



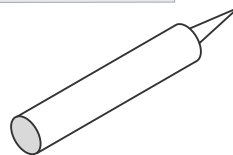
No6 x 25 SS PK Screw

Glazing D Seal
Part No JECDSEAL/100



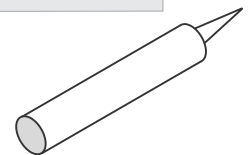
8mm deep x 9.5mm wide x 100mt Roll
Semi Rigid PVC

Rhodorsil V60 Clear
Part No H/RTV419098



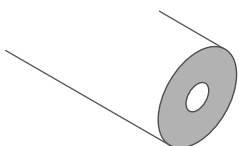
Construction Silicone

SIKA Supergrip 2hr
Part No JEC SUPERGRIP



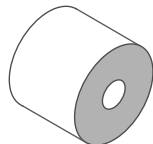
For All Coachscrews fixings

Face Fix Spacer
JVB/125/1000



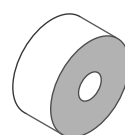
38mm dia x 1000mm long.

Face Fix Spacer
JVB125/30mm



38mm dia x 30mm long.

Face Fix Spacer
JVB125/15mm



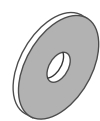
38mm dia x 15mm long.

Face Fix Spacer
JVB125/10mm



38mm dia x 10mm long.

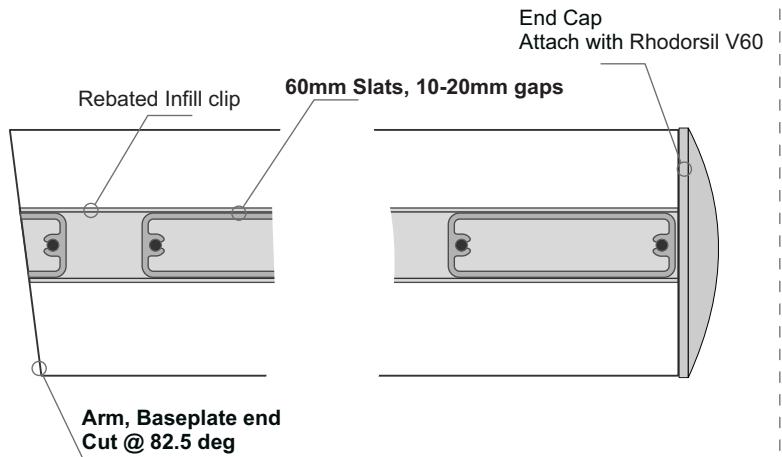
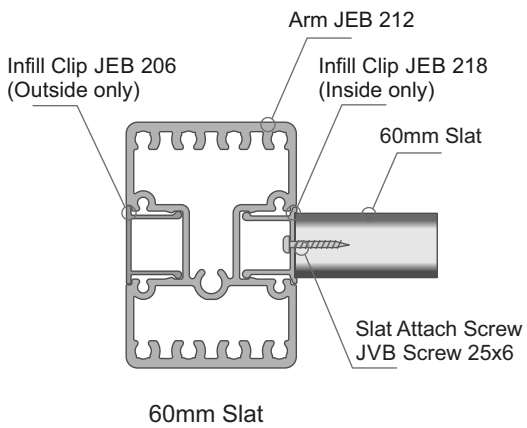
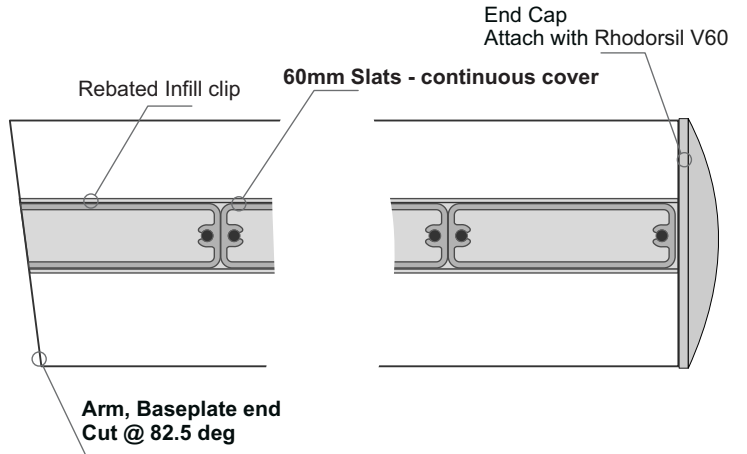
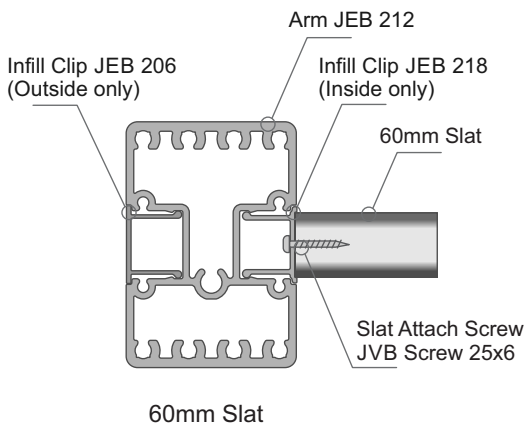
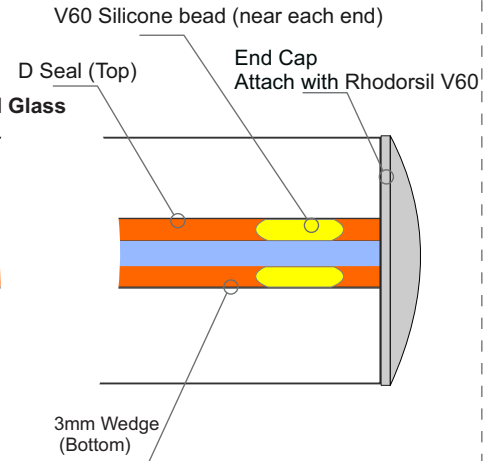
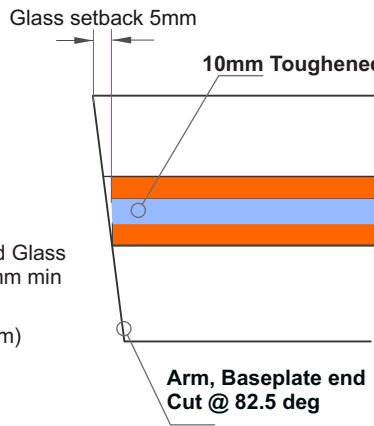
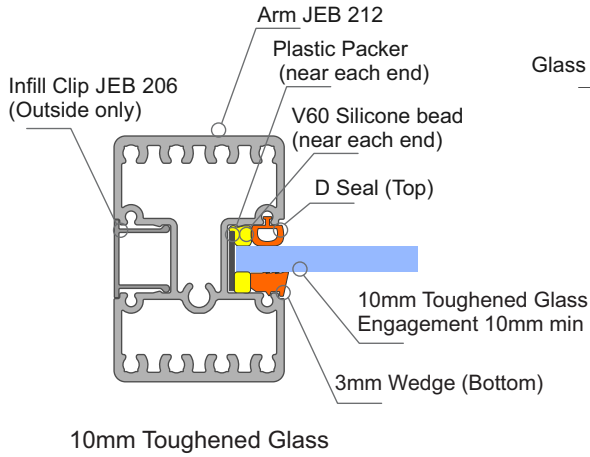
EPDM Spacer Washer
JVB126



38mm dia x 3mm

Juralco Edge Canopy System - Mountings

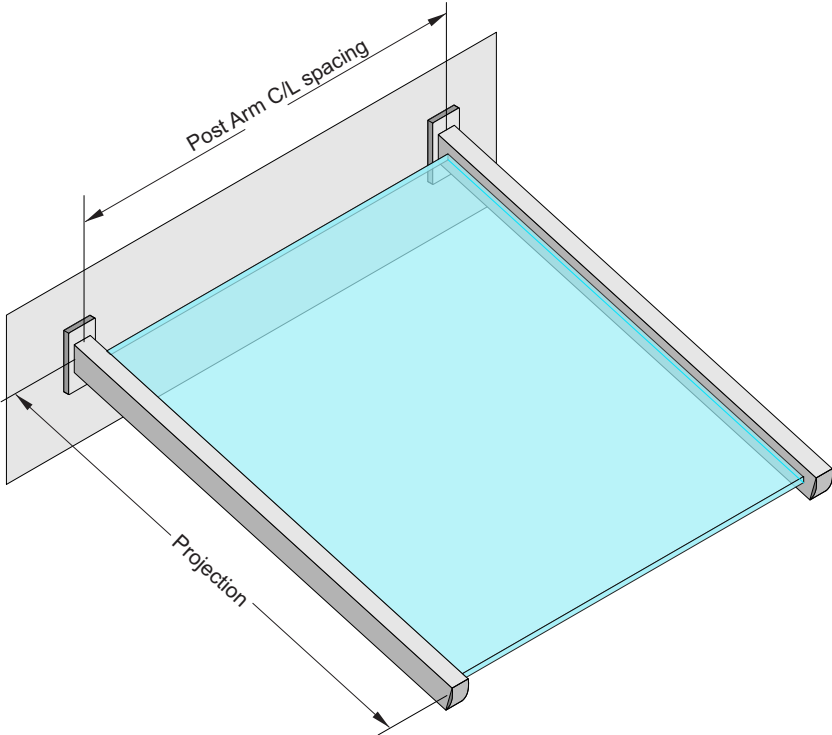
Infills



Juralco Edge Canopy System - Projection and Arm Spacings

Projection	Wind Zones. Up to and including	Post Arm Spacing (max)
1.0m	High	1.65m
	Very High	1.18m
	Extra High	0.96m
1.2m	Medium	1.38m
	High	1.11m
	Very High	0.83m
	Extra High	0.67m

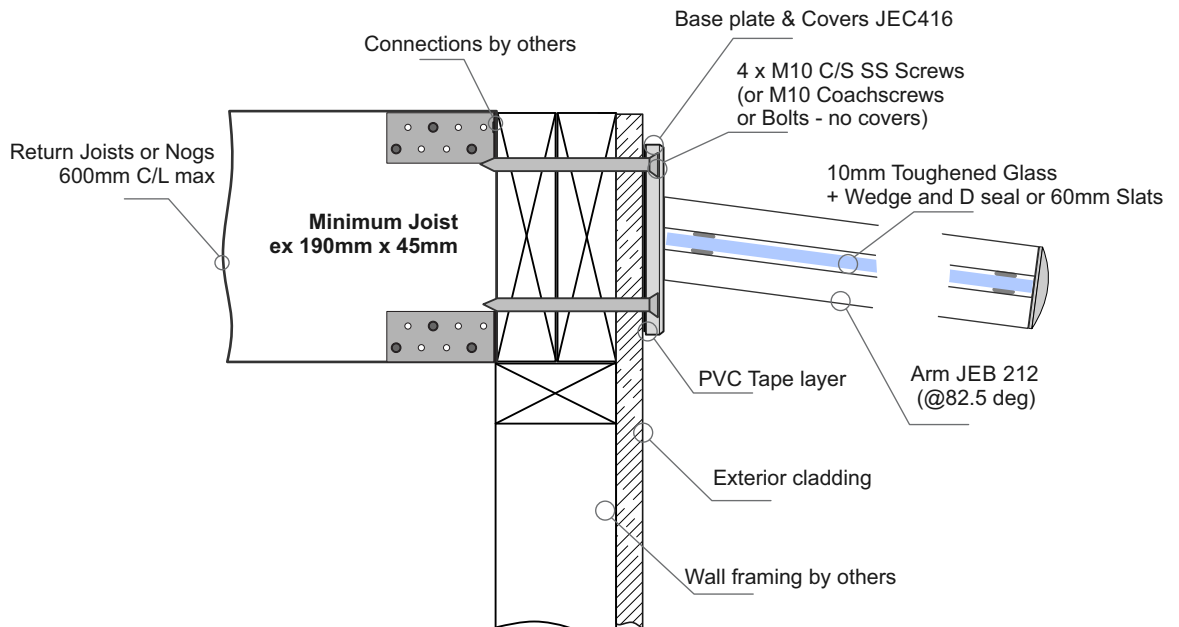
Can be multiple arms at these spacings



Juralco Edge Canopy System - Mounting to Boundary Joists - M10 SS C/S Screws

Projection	Wind Zones. Up to and including	Post Arm Spacing (max)
1.0m	High	1.65m
	Very High	1.18m
	Extra High	0.96m
1.2m	Medium	1.38m
	High	1.11m
	Very High	0.83m
	Extra High	0.67m

Can be multiple arms at these spacings



Boundary Joist Connection Details incl Cladding

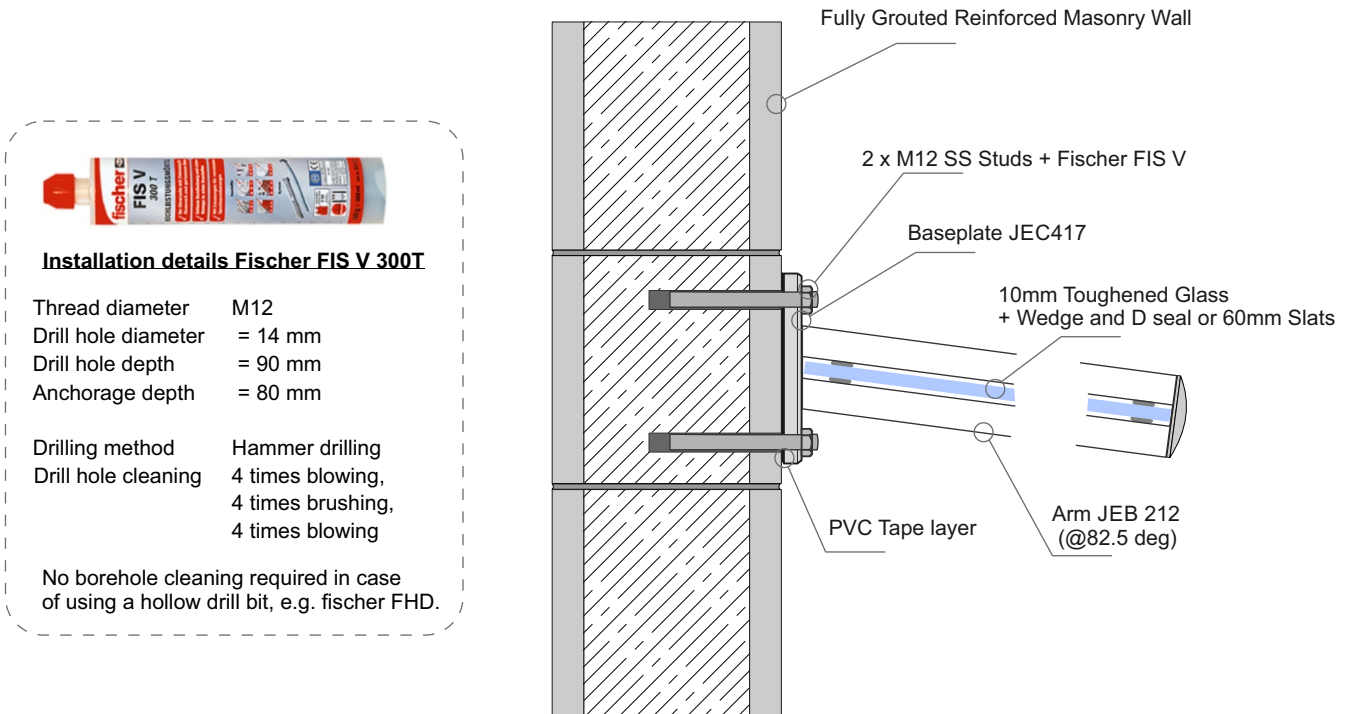
Important Installation notes:

- 1 - The Project Engineer must ensure the Structure can support the appropriate horizontal and vertical loads
- 2 - Substructure shown indicatively only. Timber SG8 minimum strength
- 3 - Coachscrews 90mm min screw engagement into joists. Drill 6mm hole
- 4 - Bond all screws with SIKA Supergrip to full depth
- 5 - A PVC Tape layer must be installed between the Baseplate and Cladding
- 6 - All fixings must be Stainless Steel

Juralco Edge Canopy System - Mounting to Block Wall - M12 SS Studs

Projection	Wind Zones. Up to and including	Post Arm Spacing (max)
1.0m	High	1.65m
	Very High	1.18m
	Extra High	0.96m
1.2m	Medium	1.38m
	High	1.11m
	Very High	0.83m
	Extra High	0.67m

Can be multiple arms at these spacings



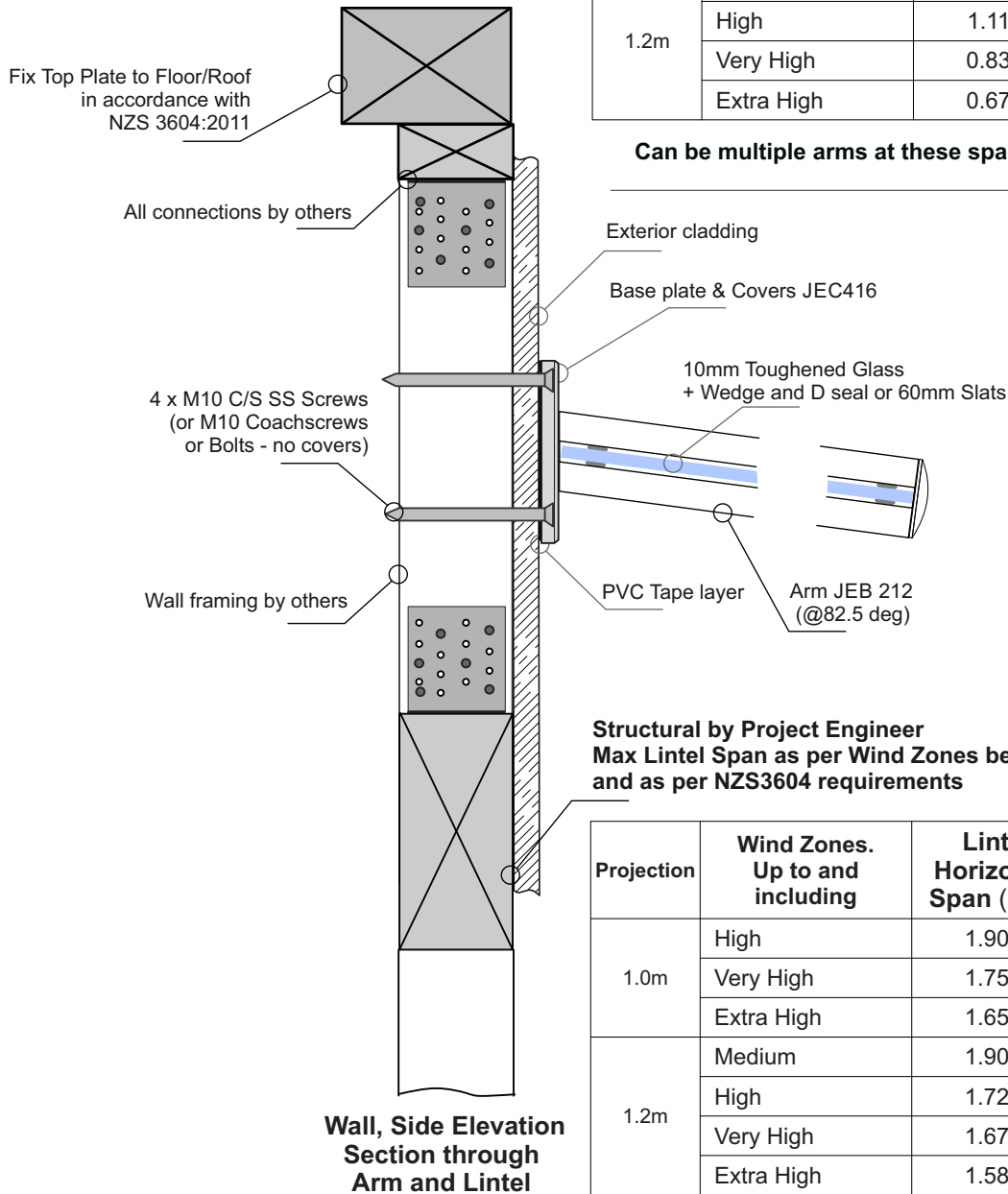
Block Wall Connection Details

Important Installation Notes:

- 1 - The Project Engineer must ensure the structure can support the appropriate loads
- 2 - M12 studs 70mm min engagement into concrete
- 3 - A PVC Tape layer must be installed between the Baseplate and Concrete
- 4 - All fixings must be Stainless Steel

Juralco Edge Canopy System - Mounting above a Lintel - M10 SS C/S Screws

Projection	Wind Zones. Up to and including	Post Arm Spacing (max)
1.0m	High	1.65m
	Very High	1.18m
	Extra High	0.96m
1.2m	Medium	1.38m
	High	1.11m
	Very High	0.83m
	Extra High	0.67m



Can be multiple arms at these spacings

Structural by Project Engineer
Max Lintel Span as per Wind Zones below and as per NZS3604 requirements

Projection	Wind Zones. Up to and including	Lintel Horizontal Span (max)
1.0m	High	1.90m
	Very High	1.75m
	Extra High	1.65m
1.2m	Medium	1.90m
	High	1.72m
	Very High	1.67m
	Extra High	1.58m

Lintel + Timber Framing Wall Connection Details

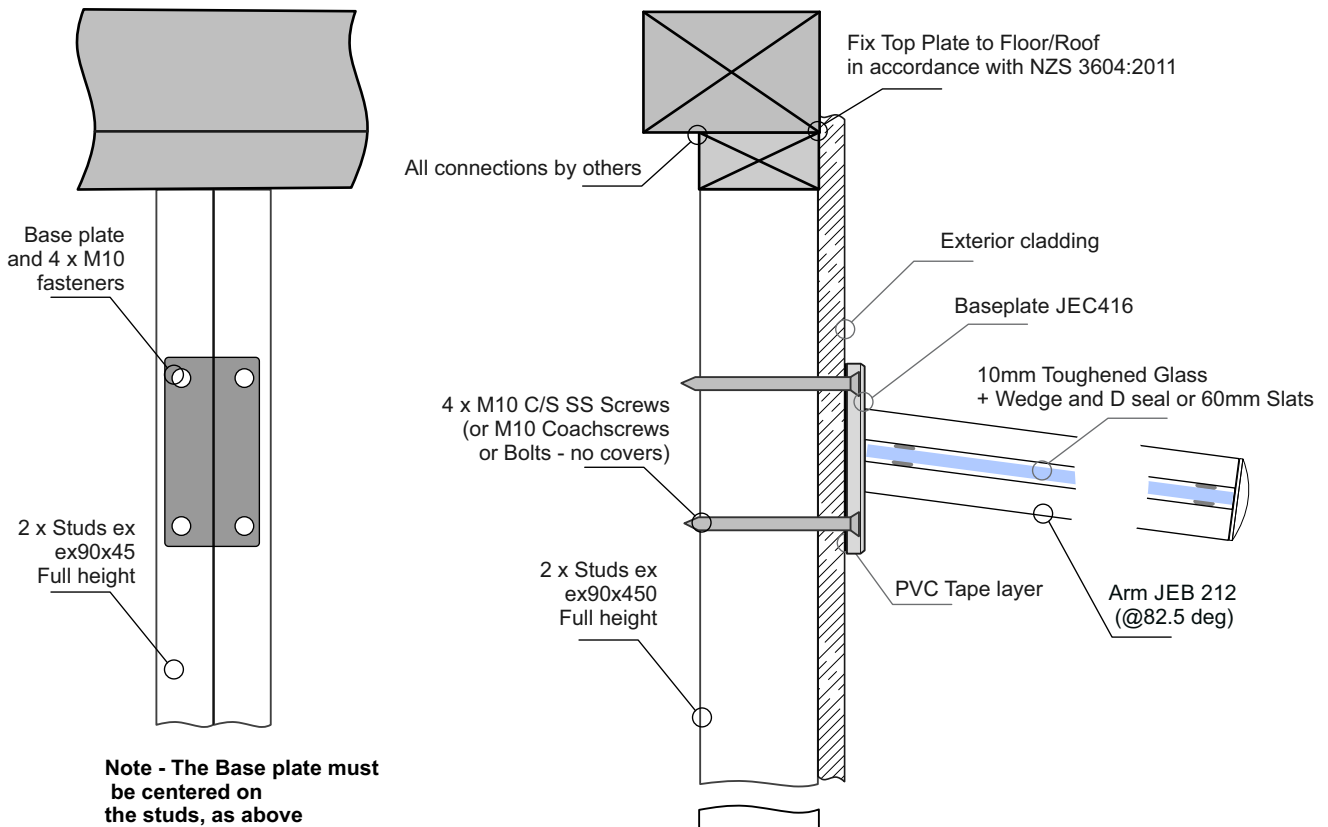
Important Installation notes:

- 1 - The Project Engineer must ensure the structure can support the appropriate horizontal and vertical loads
- 2 - Substructure shown indicatively only. Timber SG8 minimum strength
- 3 - The Base plate must be centered on the studs
- 4 - Coachscrews 90mm min screw engagement into joists. Drill 6mm hole
- 5 - Bond all screws with SIKA Supergrip to full depth
- 6 - A PVC Tape layer must be installed between the Baseplate and Cladding
- 7 - All fixings must be Stainless Steel
- 8 - Max Span of lintel - 1.9m. To be confirmed by Engineer
- 9 - All structure and fixings for End Stud details shown are in addition to NZS3604 requirements

Juralco Edge Canopy System - Mounting to Timber Studs - M10 SS C/S Screws

Projection	Wind Zones. Up to and including	Post Arm Spacing (max)
1.0m	High	1.65m
	Very High	1.18m
	Extra High	0.96m
1.2m	Medium	1.38m
	High	1.11m
	Very High	0.83m
	Extra High	0.67m

Can be multiple arms at these spacings



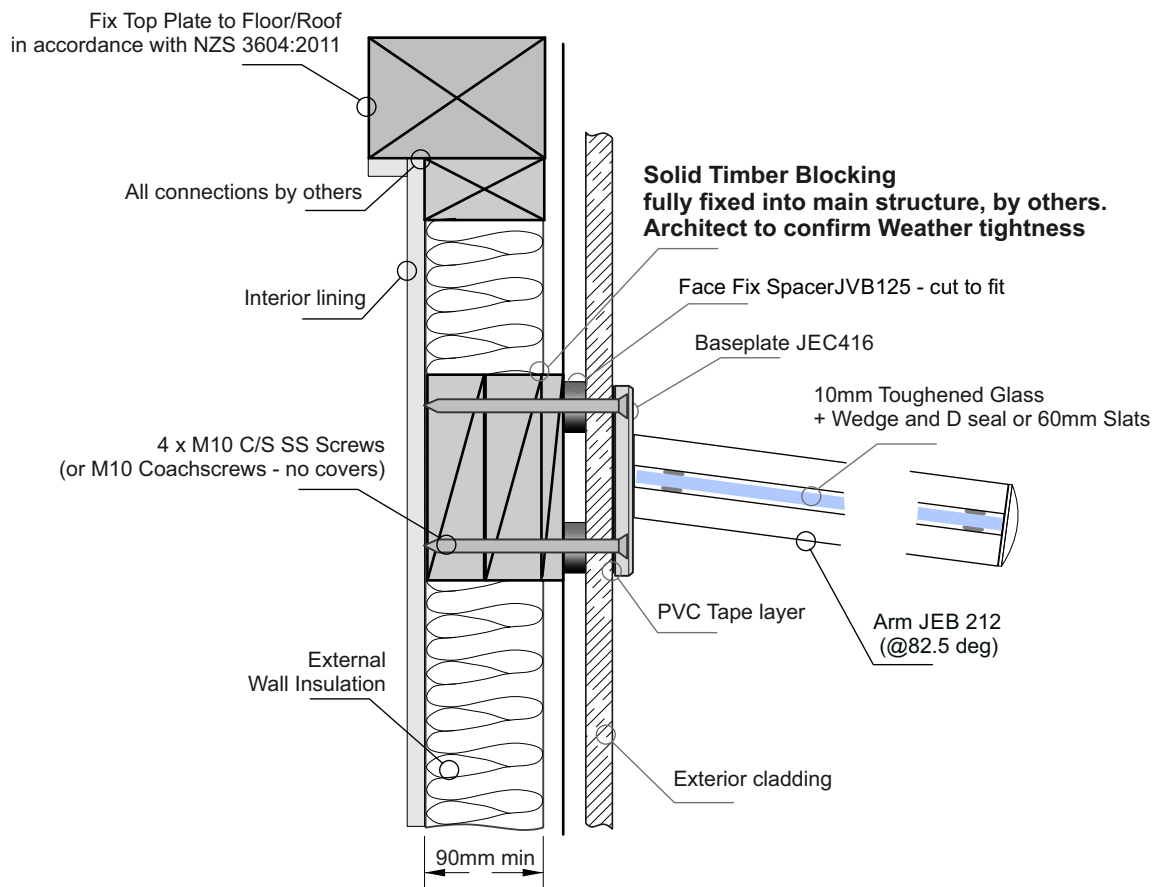
- Important Installation notes:**
- 1 - The Project Engineer must ensure the structure can support the appropriate horizontal and vertical loads
 - 2 - Substructure shown indicatively only.
Timber SG8 minimum strength
 - 3 - The Base plate must be centered on the studs
 - 4 - Coachscrews 90mm min screw engagement into joists.
Drill 6mm hole
 - 5 - Bond all screws with SIKA Supergrip to full depth
 - 6 - A PVC Tape layer must be installed between the Baseplate and Cladding
 - 7 - All fixings must be Stainless Steel

Timber Framing Wall Connection Details

Juralco Edge Canopy System - Mounting to a Cavity - M10 SS C/S Screws

Projection	Wind Zones. Up to and including	Post Arm Spacing (max)
1.0m	High	1.65m
	Very High	1.18m
	Extra High	0.96m
1.2m	Medium	1.38m
	High	1.11m
	Very High	0.83m
	Extra High	0.67m

Can be multiple arms at these spacings



Cavity Wall Connection Details

Important Installation notes:

- 1 - The Project Engineer must ensure the structure can support the appropriate horizontal and vertical loads
- 2 - Substructure shown indicatively only.
Timber SG8 minimum strength
- 3 - The Base plate must be centered on the Timber Blocking
- 4 - Coachscrews 90mm min screw engagement into joists.
Drill 6mm hole
- 5 - Bond all screws with SIKA Supergrip to full depth
- 6 - A PVC Tape layer must be installed between Baseplate and Cladding
- 7 - All fixings must be Stainless Steel

Juralco Edge Canopy System - Powder Coating Care and Maintenance

Powder Coating Installation Care

Warning re use of solvents:

- In some cases strong solvents are recommended for thinning various types of paints and also for cleaning up mastics and sealants.
- These can be harmful to the extended life of the powder coated surface, and must not be used for cleaning purposes.
- It is important to note that the damage will not be visible immediately and may take up to 12 months to develop.

If paint splashes or sealants and mastics need to be removed then the following may be safely used:
Methylated Spirits, Ethyl Alcohol, Isopropanol or preferably a mild detergent in warm water.

Joinery Protection during Installation:

All the activity on a construction site means that your powder coated items may get knocked or scratched, splattered with mortar, plaster, textured coating or paint during the later stages of construction.

Please ensure that all powder coated articles are masked or covered at this time. It is far easier to prevent accidents than to try and correct them. Should your joinery receive mortar or paint splashes see that these are removed before cure and follow the instructions contained in this brochure.

Typical sticker used to warn other trades of the need to protect and mask off powder coated joinery (applies to anodised joinery also)

"IMPORTANT ALL TRADES"
This valuable aluminium joinery will suffer permanent damage from: plaster, mortar and paint splashes - Protect if splashes occur - Immediately wash down joinery with water or meths - Do not allow splashes to harden! ~ Do not use solvents!
- Do not remove this label until final clean completed.

This photograph display damage that has occurred on site, post installation. The photo of the masked joinery displays clear signs of damage that could have occurred were it not masked. Please ensure that your joinery is protected right through the entire construction process.



Powder Coating Maintenance

External - Maintenance Program:

To extend the life of external powder coated articles and to comply with warranty requirements for powder coated aluminium joinery, a simple, regular maintenance program must be implemented.

The effects of ultra violet light, atmospheric pollution, dirt, grime and airborne salt deposits will all accumulate over time and must be removed or surface staining and weathering will occur, leading to an unsightly appearance.

For external coatings, cleaning should take place every six months. In areas where pollutants are more prevalent, such as beachfront houses and industrial or geothermal areas, then a cleaning program should be carried out on a more frequent basis ie. every one to three months.

Fences or Balustrades in close proximity to swimming pools must be washed down every six months, to clean off chlorine and salt deposits.

Cleaning your powder coating:

1. Carefully remove any loose surface deposits with a wet sponge.
2. Use a soft brush (non abrasive) and a mild household detergent (do not use solvents) in warm water, remove dust, salt and other deposits.
3. Rinse off with clean fresh water.



Restoring weathered or scratched surfaces:

Repair of Scuffed or Scratched surfaces
Dulux Spray Cans are available in all colour card colours.

Repair of Small Scratches or Chips.
Dulux Dabsticks are ideally suited for the repair of small scratches.
Dabsticks may not be available in all colour card colours.

Repair of Weathered areas .
Dulux Gloss Up is a light to medium cutting cream ideally suited for gloss restoration and has been specifically designed for this purpose.
Gloss Up contains no waxes or silicone and is a one step system.



Contact Dulux Powder Coatings , ph 0064 9 441 8244

All pages © Copyright Juralco Aluminium Building Products Ltd, 2022