

REGUPOL® ACOUSTIC UNDERLAY COLLECTION

Regupol®

SOUNDPROOFING TIMBER FLOOR COVERINGS



Regupol
Australia

**It's our 30 years of
trusted advice.**

Together we can
influence our cities
successful future.
With solutions to
soundproofing floors
in multi-residential
living.

REGUPOL® ACOUSTIC SYSTEMS

The way we treat soundproofing of floor spaces has a big impact on the well being of those that live amongst it. To play our part, this is our BCA solutions for impact sound insulation of floors. We have taken the most requested floor finishes and matched them with the **Regupol®** Acoustic Underlay that best suits the application. **This is Regupol® Acoustics Systems... simplified for timber floor coverings.**

The BCA's objectives are to safeguard occupants in residential buildings from illness or loss of amenity resulting from excessive noise. The BCA Part F5.4 Sound insulation rating of floors, requires a floor in a Class 2 or 3 building to have an impact sound insulation rating of no less than $L_{n,w}$ 62. The $L_{n,w}$ rating is a measure of the ability of the floor system to suppress footfall noise and noise from other impacts. The lower this rating, the higher the impact sound reduction performance of the system.

The BCA F5.3 Determination of Impact Sound Insulation Ratings requires:

- (a) A floor in a building required to have an impact sound insulation rating must -
 - (i) have the required value for weighted normalised impact sound pressure level ($L_{n,w}$) determined in accordance with AS ISO 717.2 using results from laboratory measurements; or
 - (ii) comply with Specification F5.2

These **Regupol® Acoustic Systems** have been tested in the laboratory in accordance with AS ISO 717.2 "Acoustics – Rating of sound insulation in buildings and of building elements". For impact sound insulation testing of floors AS ISO 717.2 Part 2. Impact sound Insulation is used. They are typical residential applications and are not exhaustive of our products and their applications. Many other acoustic systems are available for specific projects and acoustic outcomes. Contact us for further resources and access to our acoustic library of products and testing data.

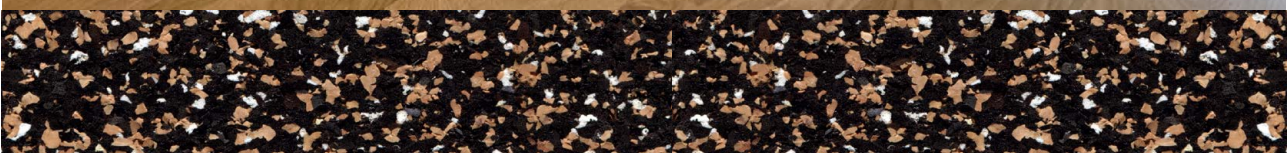


Regupol® a popular choice for multi-residential construction projects



TIMBER FLOORS

SOUNDPROOFING ENGINEERED TIMBER OR LAMINATE FLOORS
WITH REGUPOL® 4515 4.5MM ACOUSTIC UNDERLAY



REGUPOL® 4515 4.5MM

Regupol® 4515 a soundproofing acoustic underlay manufactured from high quality PUR foam granulates and cork, bound with polyurethane. This unique material composition produces a shore hardness which makes the acoustic underlay suitable to be installed directly under engineered timber and laminate floor finishes.

Benefits include:

- German quality guaranteed
- Minimises construction heights
- Suitable for use with under floor heating
- Protects expansion joints
- Light weight material
- PVC free
- Excellent adhesion qualities
- Low odour
- Low VOC
- Available in modular tiles for easy installation.
- Made from recycled materials
- Manufactured and certified to OHAS 18001:2007, DIN ISO 9001:2008, DIN ISO 14001:2004 Management Systems

Product Data - Rolls and Tiles

Rolls	1m x 20m
Modular Tiles	1050mm x 500mm
Thickness	4.5mm



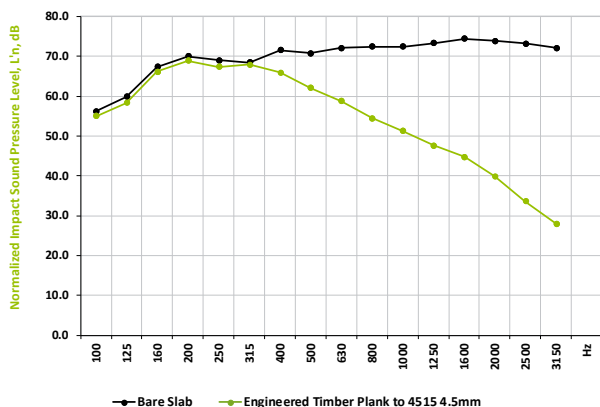
Typical application under approved engineered timber flooring



Regupol® 4515 4.5mm is manufactured from recycled PUR foam and cork

Engineered Timber Normalized Impact Sound Pressure Levels

Tested at CSIRO Clayton, in accordance with ISO 140-8: 2006 (E), ISO 140-6-2006, AS ISO 717.2-2004, ASTM E989-89. Test area 10.8m². Results can vary when different floors are installed and/or if bonded.



REPORT RG086 - REGUPOL® 4515 4.5MM

Layer of 14mm Engineered Timber (floating), to 4515 4.5mm, to 150mm Concrete Slab (no ceiling).

Ln,w 60 dB	Improvement ΔL_w 17dB	IIC 50	Complies with BCA Part F5.3 Impact Sound
------------	----------------------------------	--------	--

FLOATING ENGINEERED TIMBER

with Regupol® 4515 4.5mm

This system reflects a typical **residential** application with approved Engineered Timber Floor Covering. For all other applications please contact Regupol's Technical Division. Please note that the drawings are not to scale and are for illustration purposes only.



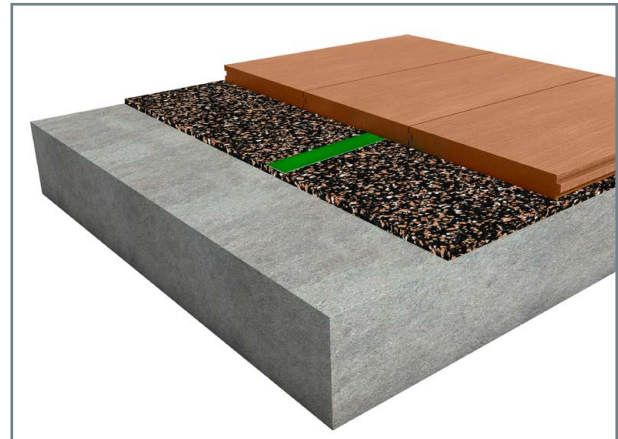
Tape & Sealer Information







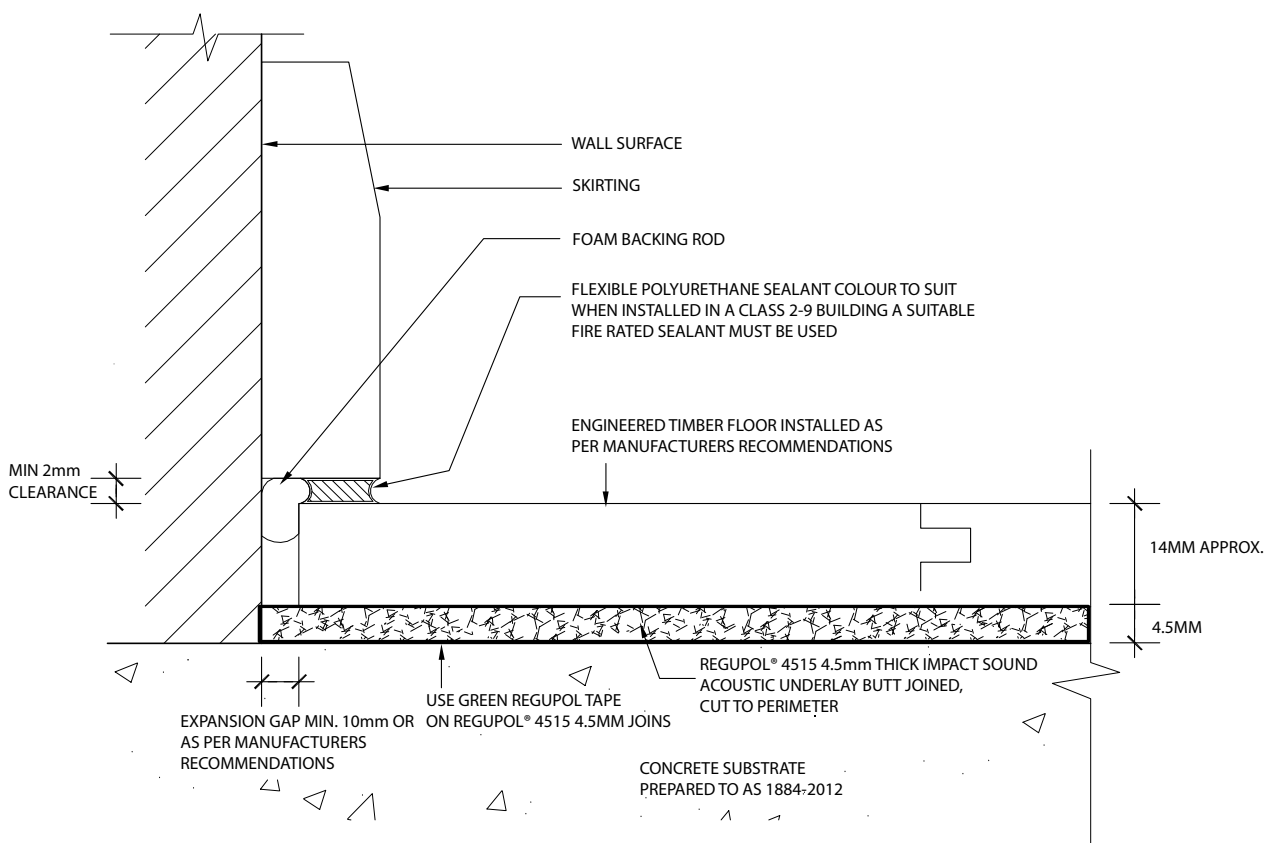
Regupol Green Tape is a single sided 72mm wide by 25m long cloth tape, used to join loose laid acoustic underlay.



Regupol Two Part Water Based Epoxy Moisture Sealer is a high performance; water based two component epoxy moisture and vapour barrier formulated to prevent water seepage and permeation in building and construction substrates. Use when relative humidity exceeds the required levels.



- 1  Approved Engineered Timber Flooring
- 2  Regupol® 4515 4.5mm Acoustic Underlay
- 3  Regupol Green Tape
- 4  Concrete Substrate Prepared to AS1884-2012



DUAL BOND **ENGINEERED TIMBER**

with Regupol® 4515 4.5mm

This system reflects a typical **residential** application with approved Engineered Timber Floor Covering. For all other applications please contact Regupol's Technical Division. Please note that the drawings are not to scale and are for illustration purposes only.



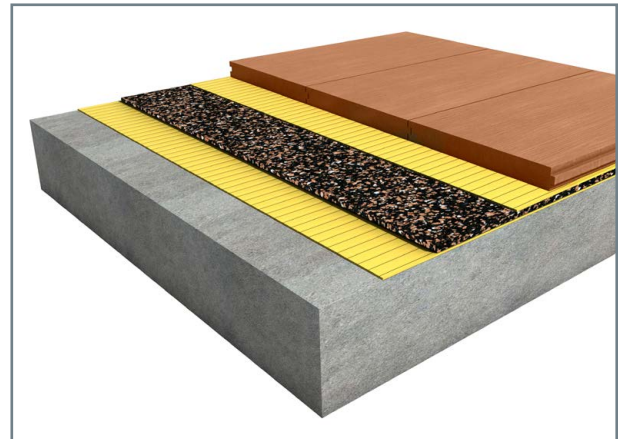
Adhesive and Sealer Information



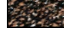




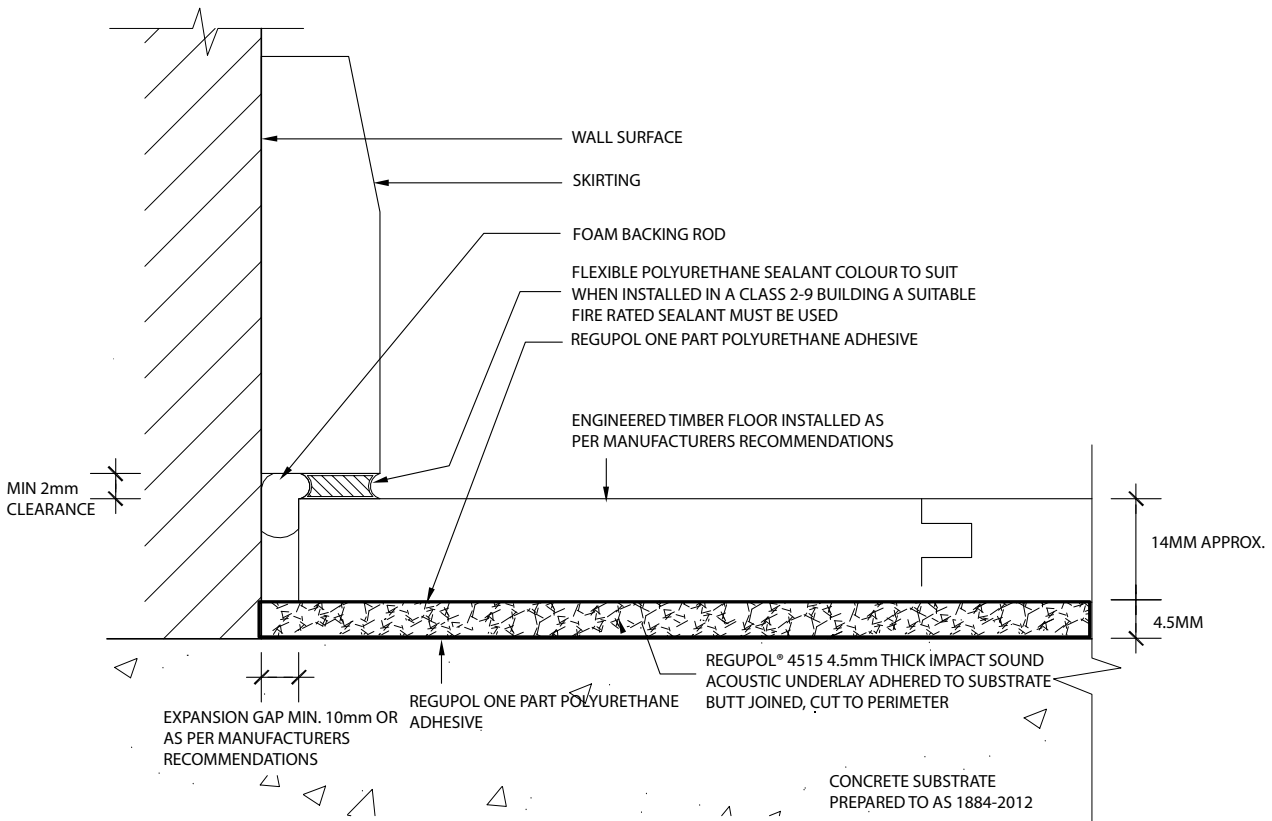
Regupol One Part Polyurethane Adhesive is an elastomeric moisture cured, solvent free polyurethane adhesive. The adhesive is suitable for internal and external wet and dry areas.



Regupol Two Part Water Based Epoxy Moisture Sealer is a high performance; water based two component epoxy moisture and vapour barrier formulated to prevent water seepage and permeation in building and construction substrates. Use when relative humidity exceeds the required levels.



- 1  Approved Engineered Timber Floor
- 2  Regupol One Part Polyurethane Adhesive
- 3  Regupol® 4515 4.5mm Acoustic Underlay
- 4  Regupol One Part Polyurethane Adhesive
- 5  Concrete Substrate Prepared to AS1884-2012





TIMBER FLOORS

SOUNDPROOFING ENGINEERED TIMBER OR LAMINATE FLOORS
WITH REGUPOL® 5512 5MM ACOUSTIC UNDERLAY



REGUPOL® 5512 5MM

Regupol® 5512 is a soundproofing acoustic underlay manufactured from recycled materials, bound with polyurethane. The product composition produces a cost effective solution to sound isolate bonded screed beds in wet and dry area installations. The product is also used under a number of hard flooring finishes such as laminates and engineered timber flooring.

Benefits include:

- German quality guaranteed
- Minimises construction heights
- Suitable for use with under floor heating
- Protects expansion joints
- PVC free
- Available in modular tiles for easy installation
- Made from recycled materials
- Manufactured and certified to OHAS 18001:2007, DIN ISO 9001:2008, DIN ISO 14001:2004 Management Systems

Product Data - Rolls and Tiles

Rolls	1.25m x 10lm, 50lm
Modular Tiles	1050mm x 500mm
Thickness	5mm



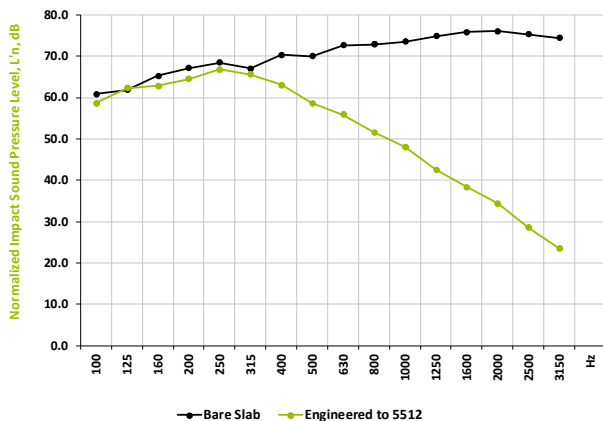
Typical application under engineered timber and laminate flooring



Regupol® 5512 is manufactured with recycled materials

Engineered Timber Normalized Impact Sound Pressure Levels

Tested at CSIRO Clayton, in accordance with ISO 140-8: 2006 (E), ISO 140-6-2006, AS ISO 717.2-2004, ASTM E989-89. Test area 10.8m². Results can vary when different floors are installed and/or if bonded.



REPORT RG111 - REGUPOL® 5512 5MM

Layer of 14mm Engineered Timber (floating), to Regupol® 5512 5mm, to 150mm Concrete Slab (no ceiling).

Ln,w 58 dB	Improvement ΔL_w 18dB	IIC 52	Complies with BCA Part F5.3 Impact Sound
------------	----------------------------------	--------	--

FLOATING TIMBER ENGINEERED OR LAMINATE

with Regupol® 5512 5mm

This system reflects a typical **residential** application with approved Engineered Timber Floor Covering. For all other applications please contact Regupol's Technical Division. Please note that the drawings are not to scale and are for illustration purposes only.



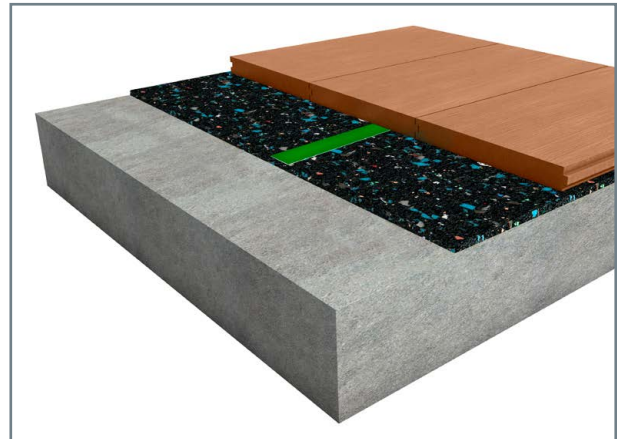
Tape & Sealer Information



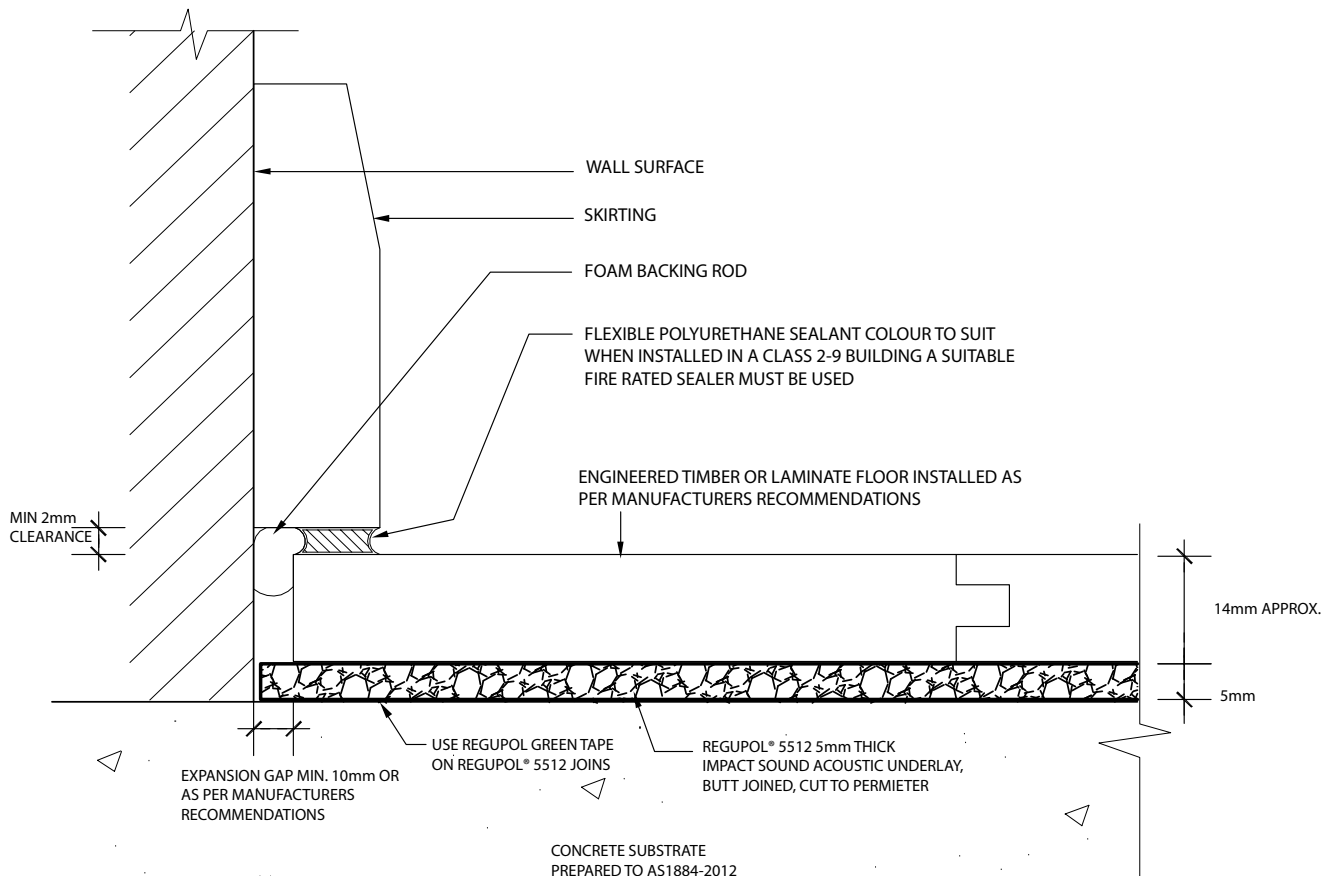
Regupol Green Tape is a single sided 72mm wide by 25m long cloth tape, used to join loose laid acoustic underlay.



Regupol Two Part Water Based Epoxy Moisture Sealer is a high performance; water based two component epoxy moisture and vapour barrier formulated to prevent water seepage and permeation in building and construction substrates. Use when relative humidity exceeds the required levels.



- 1 Approved Engineered Timber or Laminate Flooring
- 2 Regupol® 5512 5mm Acoustic Underlay
- 3 Regupol Green Tape
- 4 Concrete Substrate Prepared to AS1884-2012



DUAL BOND TIMBER **ENGINEERED OR LAMINATE**

with Regupol® 5512 5mm

This system reflects a typical **residential** application with approved Engineered Timber Floor Covering. For all other applications please contact Regupol's Technical Division. Please note that the drawings are not to scale and are for illustration purposes only.



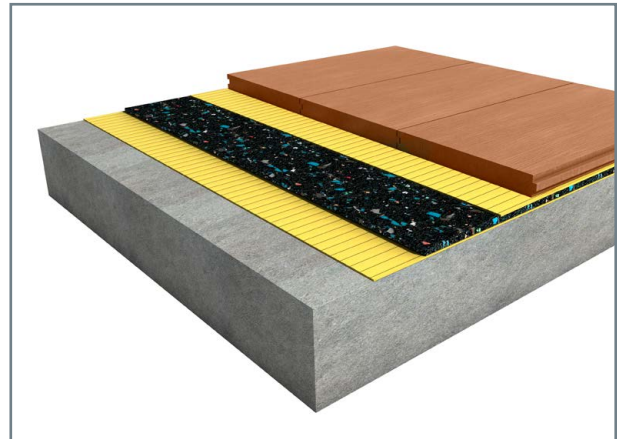
Adhesive and Sealer Information








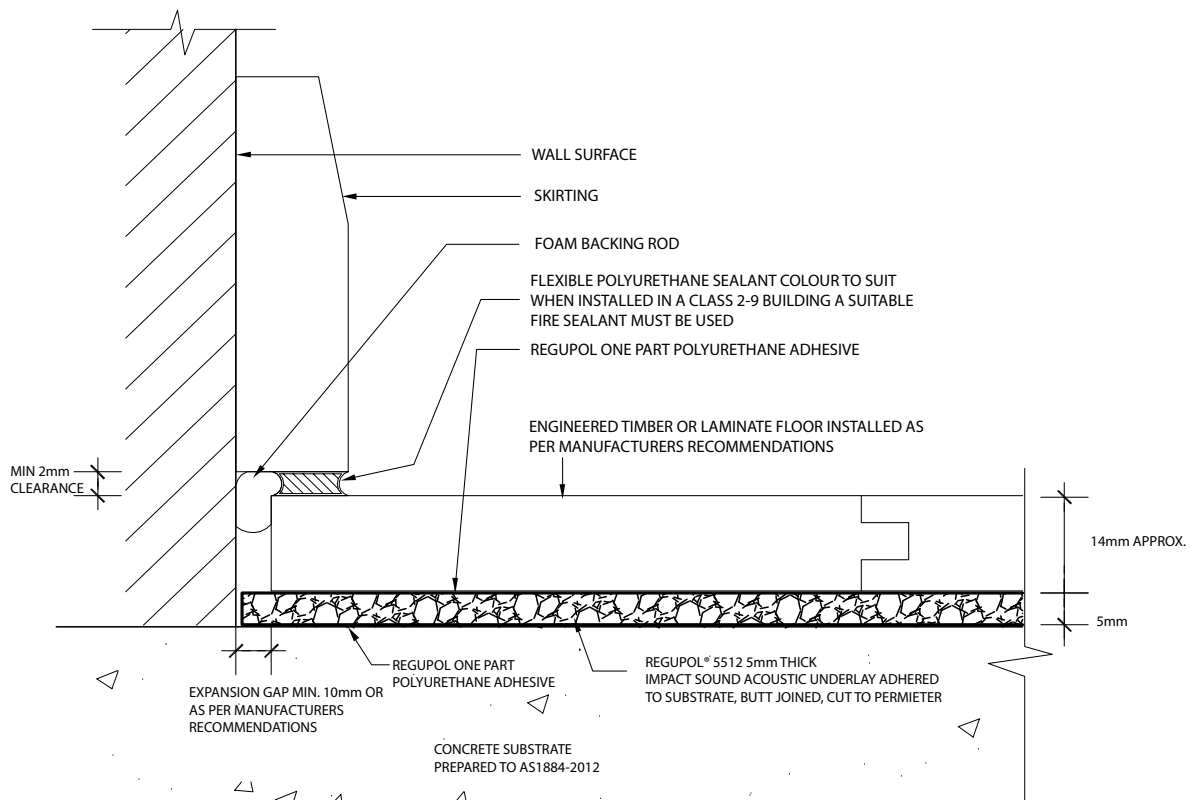
Regupol One Part Polyurethane Adhesive is an elastomeric moisture cured, solvent free polyurethane adhesive. The adhesive is suitable for internal and external wet and dry areas.



Regupol Two Part Water Based Epoxy Moisture Sealer is a high performance; water based two component epoxy moisture and vapour barrier formulated to prevent water seepage and permeation in building and construction substrates. Use when relative humidity exceeds the required levels.



- 1  Approved Engineered Timber or Laminate Floor
- 2  Regupol One Part Polyurethane Adhesive
- 3  Regupol® 5512 5mm Acoustic Underlay
- 4  Regupol One Part Polyurethane Adhesive
- 5  Concrete Substrate Prepared to AS1884-2012





TIMBER FLOORS

SOUNDPROOFING PARQUETRY AND ENGINEERED TIMBER FLOORS
WITH REGUPOL® K225 5MM ACOUSTIC UNDERLAY



REGUPOL® K225 5MM

Regupol® K225 is a soundproofing acoustic underlay manufactured from recycled SBR rubber granulates and cork, bound with polyurethane. The product composition produces an effective acoustic barrier to install parquetry and timber floors directly to the surface finish. The cork and rubber combination ensures excellent adhesion between the polyurethane adhesive, the acoustic underlay and the timber floor.

Benefits include:

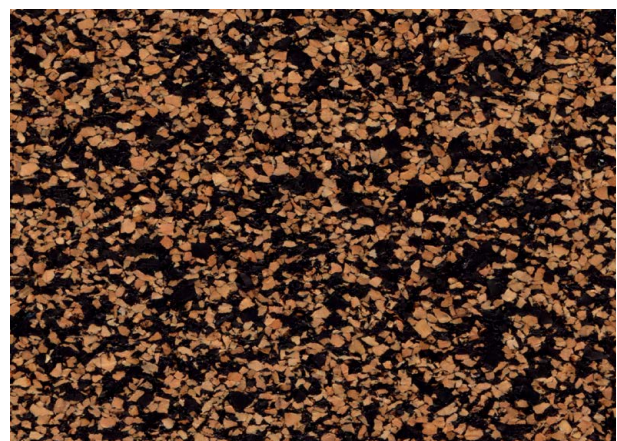
- German quality guaranteed
- Minimises construction heights
- Suitable for use with under floor heating
- Protects expansion joints
- PVC Free
- Available in modular tiles for easy installation
- Excellent adhesion qualities
- Made from recycled materials
- Manufactured and certified to OHAS 18001:2007, DIN ISO 9001:2008, DIN ISO 14001:2004 Management Systems

Product Data - Rolls and Tiles

Rolls 1m x 20lm
 Modular Tiles 1050mm x 500mm
 Thickness 5mm



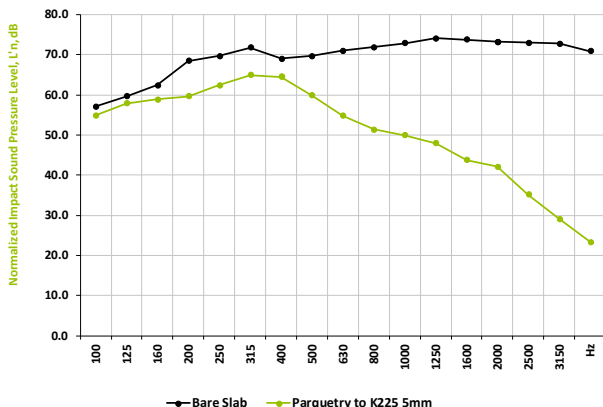
Typical application under parquetry and engineered timber



Regupol® K225 is manufactured from recycled cork and SBR rubber

Parquetry Timber Normalized Impact Sound Pressure Levels

Tested at CSIRO Hightett, in accordance with ISO 140-8: 1997 (E), ISO 140-6, AS ISO 717.2-2004, ASTM E989-89. Test area 11.7m². Results can vary when different floors are installed and/or if bonded.



REPORT RG019 - REGUPOL® K225 5MM

Layer of 19mm Parquetry, bonded to Regupol® K225 5mm, bonded to 150mm Bare Concrete Slab (no ceiling).

Ln,w 56 dB	Improvement ΔLw 20dB	IIC 54	Complies with BCA Part F5.3 Impact Sound
------------	----------------------	--------	--

DUAL BOND **PARQUETRY TIMBER**

with Regupol® K225 5mm

This system reflects a typical **residential** application with approved parquetry timber floors. For all other applications please contact Regupol's Technical Division. Please note that the drawings are not to scale and are for illustration purposes only.



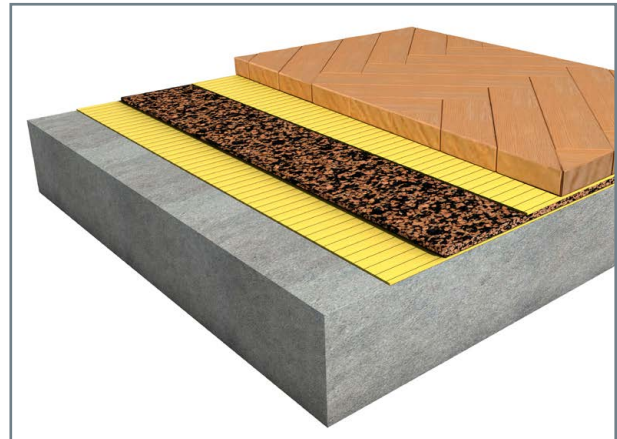
Adhesive and Sealer Information




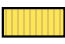



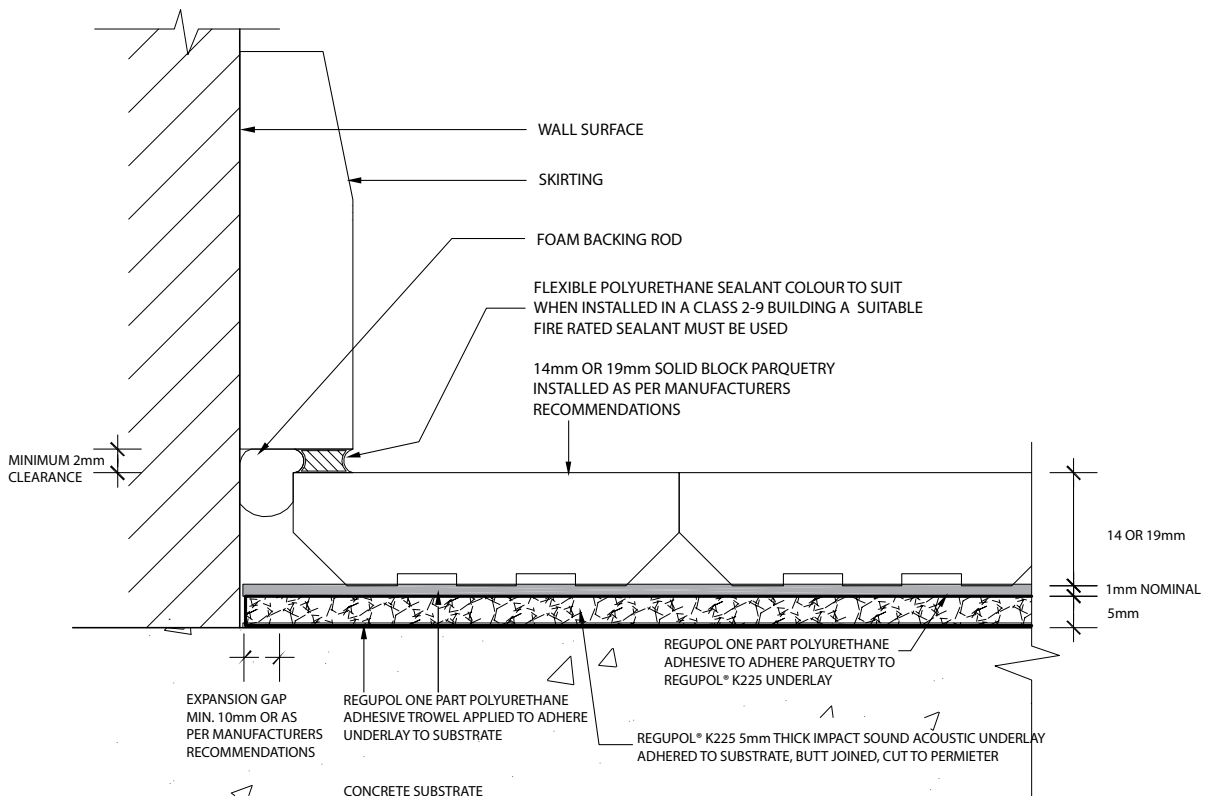
Regupol One Part Polyurethane Adhesive is an elastomeric moisture cured, solvent free polyurethane adhesive. The adhesive is suitable for internal and external wet and dry areas.



Regupol Two Part Water Based Epoxy Moisture Sealer is a high performance; water based two component epoxy moisture and vapour barrier formulated to prevent water seepage and permeation in building and construction substrates. Use when relative humidity exceeds the required levels.



- 1  Approved Parquetry Floor 14mm or 19mm
- 2  Regupol One Part Polyurethane Adhesive
- 3  Regupol® K225 5mm Acoustic Underlay
- 4  Regupol One Part Polyurethane Adhesive
- 5  Concrete Substrate Prepared to AS1884-2012



DUAL BOND **ENGINEERED TIMBER**

with Regupol® K225 5mm

This system reflects a typical **residential** application with approved Engineered Timber Floors. For all other applications please contact Regupol's Technical Division. Please note that drawings are not to scale and are for illustration purposes only.



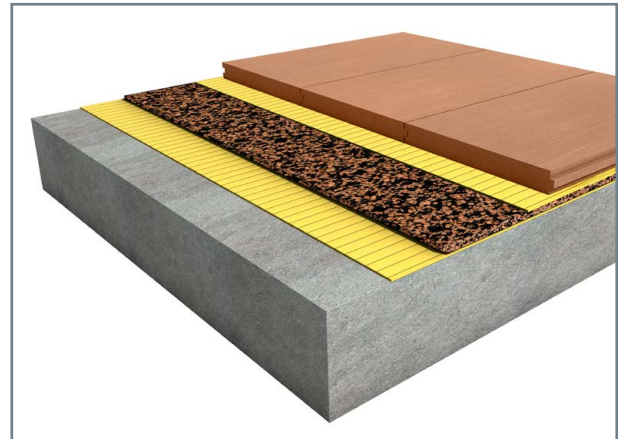
Adhesive and Sealer Information



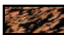




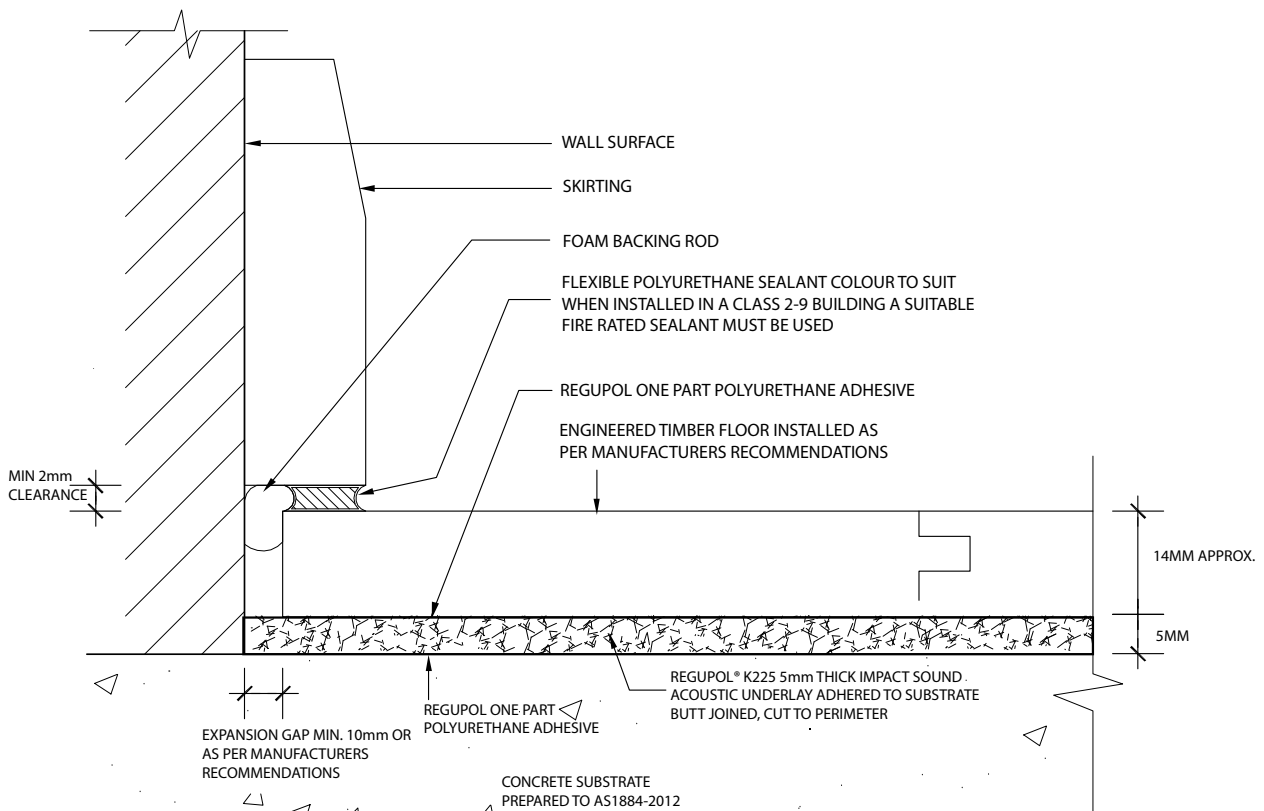
Regupol One Part Polyurethane Adhesive is an elastomeric moisture cured, solvent free polyurethane adhesive. The adhesive is suitable for internal and external wet and dry areas.



Regupol Two Part Water Based Epoxy Moisture Sealer is a high performance; water based two component epoxy moisture and vapour barrier formulated to prevent water seepage and permeation in building and construction substrates. Use when relative humidity exceeds the required levels.



- 1  Approved Engineered Timber Floor
- 2  Regupol One Part Polyurethane Adhesive
- 3  Regupol® K225 5mm Acoustic Underlay
- 4  Regupol One Part Polyurethane Adhesive
- 5  Concrete Substrate Prepared to AS1884-2012





TIMBER FLOORS

SOUNDPROOFING ENGINEERED TIMBER FLOORS
WITH REGUPOL® 6015 6/3MM ACOUSTIC UNDERLAY



REGUPOL® 6015 6/3MM

Regupol® 6015 dimple is a soundproofing acoustic underlay manufactured from recycled SBR rubber, bound with polyurethane. The product is made to a specific density and finished in 3D dimple profile. **Regupol® 6015** dimple is a soundproofing acoustic underlay designed to isolate approved floor finishes from the main structure of the building, reducing impact energy generated by general footfall.

Benefits include:

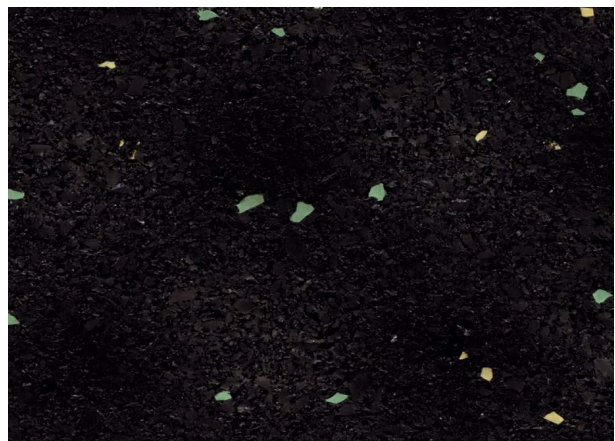
- German quality guaranteed
- Minimises construction heights
- Suitable for use with under floor heating
- Protects expansion joints
- PVC free
- Made from recycled materials
- Manufactured and certified to OHAS 18001:2007, DIN ISO 9001:2008, DIN ISO 14001:2004 Management Systems

Product Data - Rolls

Rolls 1.25m x 20lm
 Thickness 6mm dimpled profile 6/3mm



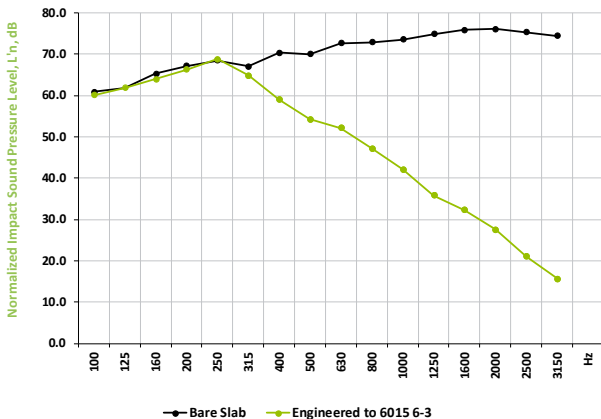
Typical application under approved engineered timber floors



Regupol® 6015 is manufactured using recycled SBR rubber

Engineered Timber Normalized Impact Sound Pressure Levels

Tested at CSIRO Clayton, in accordance with ISO 140-8: 2006 (E), ISO 140-6-2006, AS ISO 717.2-2004, ASTM E989-89. Test area 10.8m²
 Results can vary when different floors are installed and/or if bonded.



REPORT RG113 - REGUPOL® 6015 6/3MM

Layer of 14mm Engineered Timber (floating), to Regupol® 6015 6/3mm dimpled, to 150mm Concrete Slab (no ceiling).

Ln,w 58 dB	Improvement ΔLw 17dB	IIC 51	Complies with BCA Part F5.3 Impact Sound
------------	----------------------	--------	--

FLOATING ENGINEERED TIMBER

with Regupol® 6015 6/3mm

This system reflects a typical **residential** application with approved Engineered Timber Floor Covering. For all other applications please contact Regupol's Technical Division. Please note that the drawings are not to scale and are for illustration purposes only.



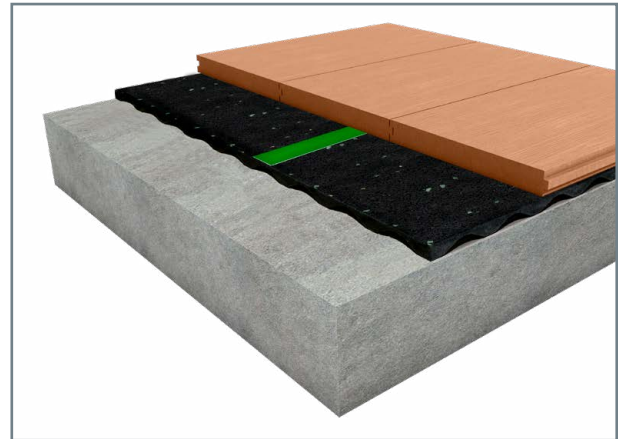
Tape & Sealer Information



Regupol Green Tape is a single sided 72mm wide by 25m long cloth tape, used to join loose laid acoustic underlay.

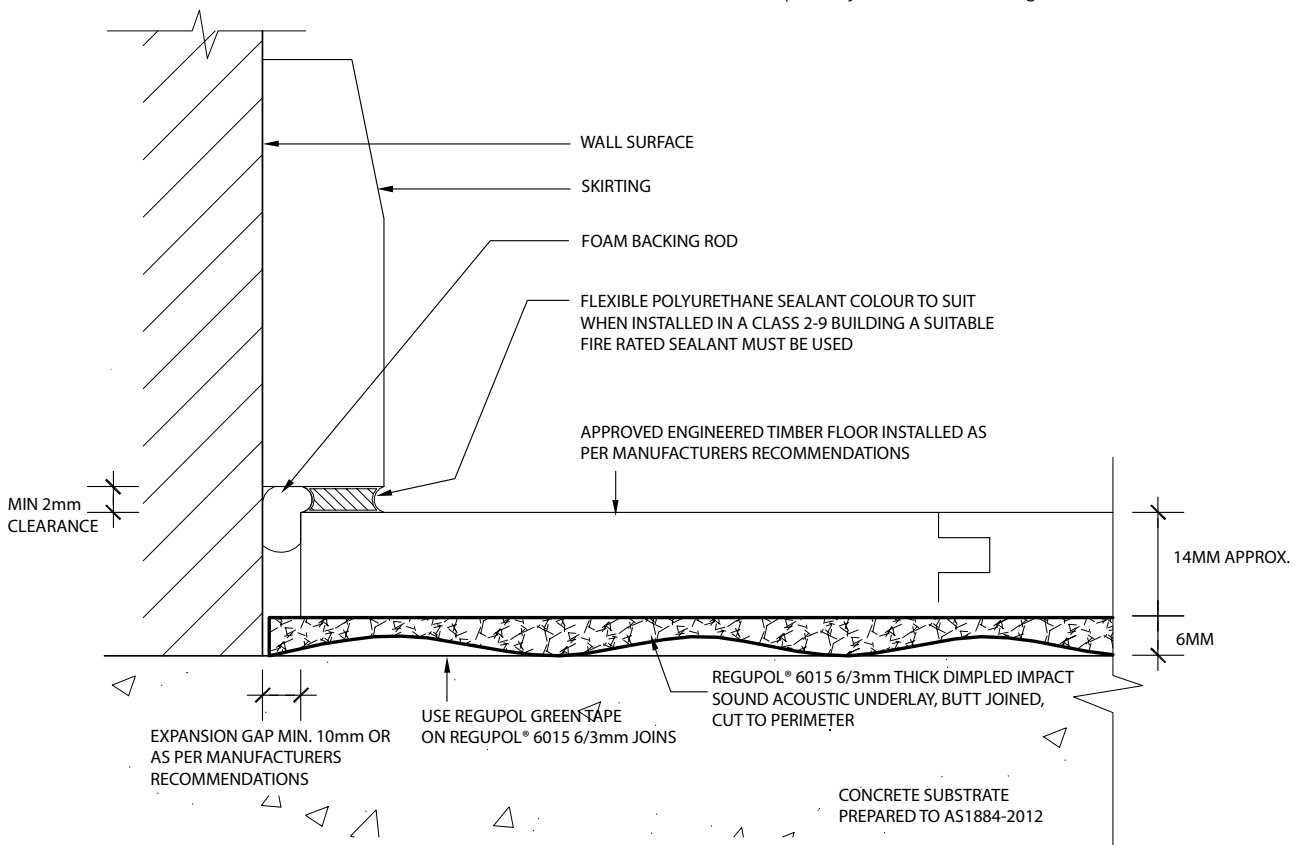


Regupol Two Part Water Based Epoxy Moisture Sealer is a high performance; water based two component epoxy moisture and vapour barrier formulated to prevent water seepage and permeation in building and construction substrates. Use when relative humidity exceeds the required levels.



- 1 Approved Engineered Timber Flooring
- 2 Regupol® 6015 6/3mm Acoustic Underlay
- 3 Regupol Green Tape
- 4 Concrete Substrate Prepared to AS1884-2012

Please Note: Not all Engineered Timber Floors are approved over the dimpled acoustic underlay. Contact Regupol Australia to check compatibility with the selected Engineered Board.



DUAL BOND **ENGINEERED TIMBER**

with Regupol® 6015 6/3mm

This system reflects a typical **residential** application with approved bamboo floor covering. For all other applications please contact Regupol's Technical Division. Please note that the drawings are not to scale and are for illustration purposes only.



Adhesive and Sealer Information








Regupol One Part Polyurethane Adhesive is an elastomeric moisture cured, solvent free polyurethane adhesive. The adhesive is suitable for internal and external wet and dry areas.

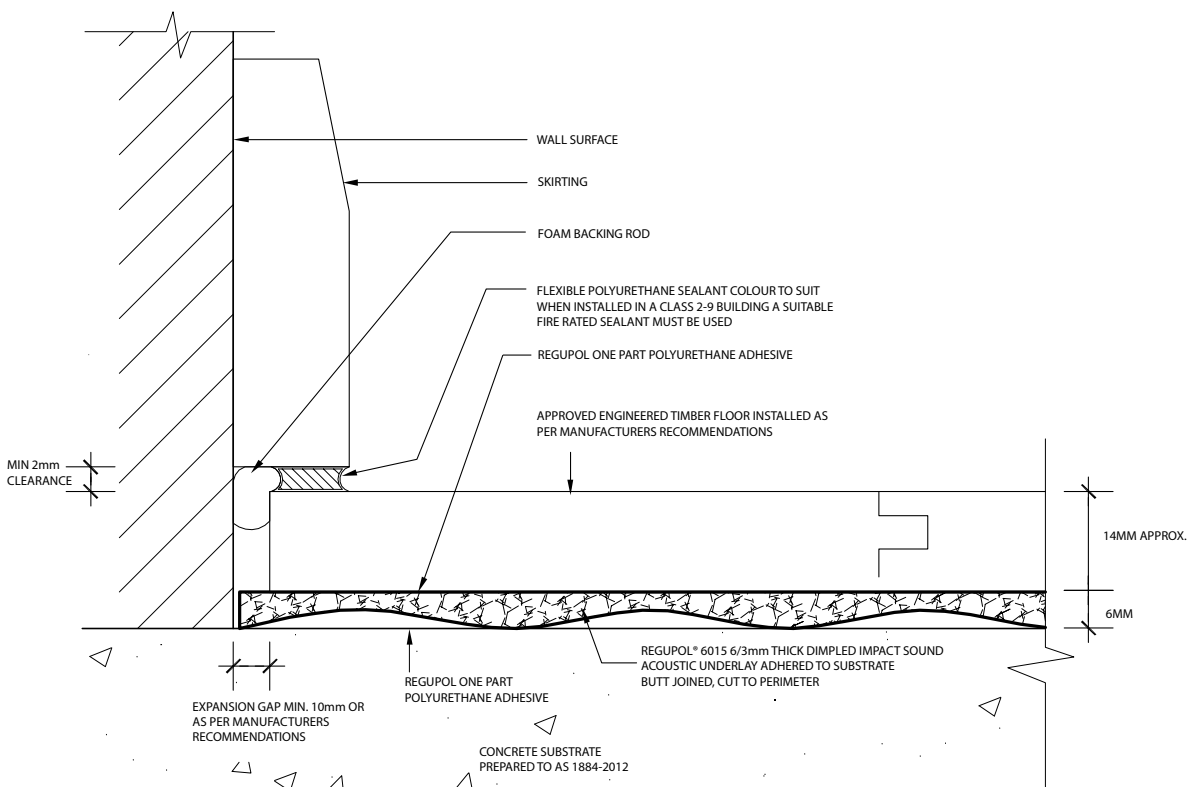


Regupol Two Part Water Based Epoxy Moisture Sealer is a high performance; water based two component epoxy moisture and vapour barrier formulated to prevent water seepage and permeation in building and construction substrates. Use when relative humidity exceeds the required levels.



- 1  Approved Engineered Timber Flooring
- 2  Regupol One Part Polyurethane Adhesive
- 3  Regupol® 6015 6/3mm Acoustic Underlay
- 4  Regupol One Part Polyurethane Adhesive
- 5  Concrete Substrate Prepared to AS1884-2012

Please Note: Not all Engineered Timber Floors are approved over the dimpled acoustic underlay. Contact Regupol Australia to check compatibility with the selected Engineered Board.





TIMBER FLOORS

SOUNDPROOFING APPROVED ENGINEERED TIMBER FLOORING
WITH REGUPOL® 6010 8/4MM ACOUSTIC UNDERLAY



REGUPOL® 6010 8/4MM

Regupol® 6010 dimple is a soundproofing acoustic underlay manufactured from recycled SBR rubber, bound with polyurethane. The finished product is technically superior when it comes to installing approved engineered timber floors. The dimple profile allows for the impact sound generated to dissipate and effectively reduce.

Benefits include:

- German quality guaranteed
- Minimises construction heights
- Suitable for use with under floor heating
- Protects expansion joints
- PVC free
- Made from recycled materials
- Manufactured and certified to OHAS 18001:2007, DIN ISO 9001:2008, DIN ISO 14001:2004 Management Systems

Product Data - Rolls

Rolls 1.15m x 20lm
 Thickness 8mm dimpled profile 8/4mm



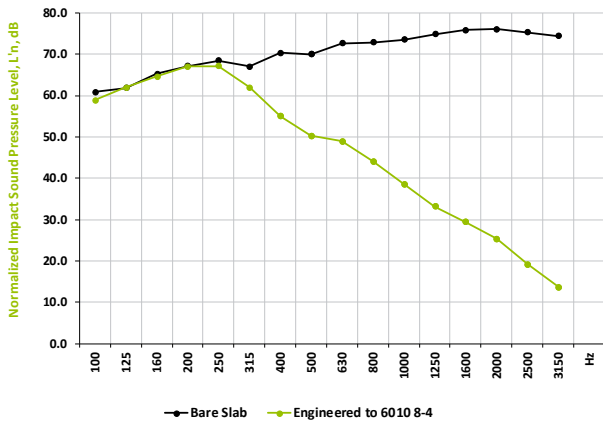
Typical application under approved engineered timber floors



Regupol® 6010 is manufactured using recycled SBR rubber

Engineered Timber Normalized Impact Sound Pressure Levels

Tested at CSIRO Clayton, in accordance with ISO 140-8: 2006 (E), ISO 140-6-2006, AS ISO 717.2-2004, ASTM E989-89. Test area 10.8m²
 Results can vary when different floors are installed and/or if bonded.



REPORT RG112 - REGUPOL® 6010 8/4MM			
Layer of 14mm Engineered Timber (floating), to Regupol® 6010 8/4mm dimpled, to 150mm Concrete Slab (no ceiling).			
Ln,w 57 dB	Improvement ΔLw 18dB	IIC 53	Complies with BCA Part F5.3 Impact Sound

FLOATING ENGINEERED TIMBER

with Regupol® 6010 8/4mm

This system reflects a typical **residential** application with approved Engineered Timber Floor Covering. For all other applications please contact Regupol's Technical Division. Please note that the drawings are not to scale and are for illustration purposes only.



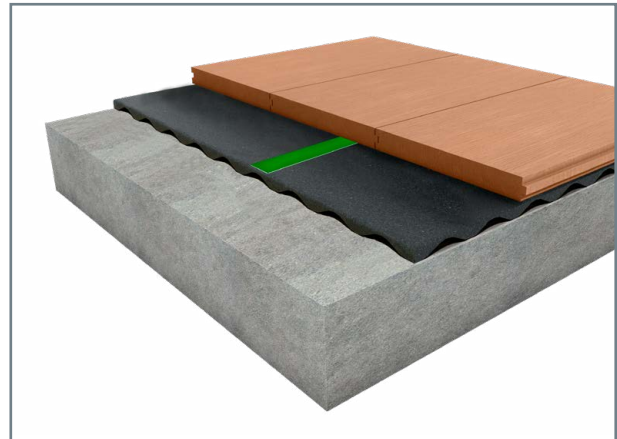
Tape & Sealer Information



Regupol Green Tape is a single sided 72mm wide by 25m long cloth tape, used to join loose laid acoustic underlay.

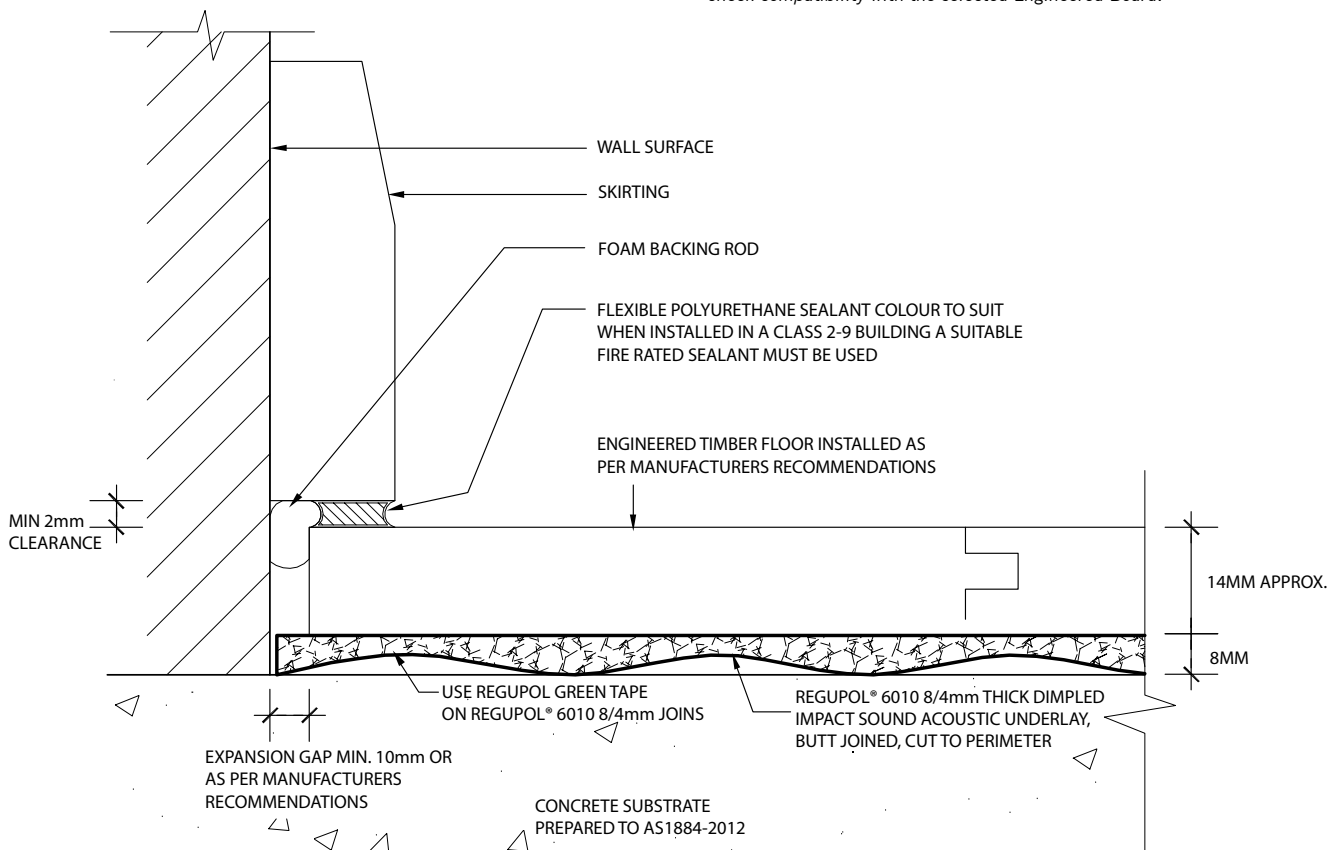


Regupol Two Part Water Based Epoxy Moisture Sealer is a high performance; water based two component epoxy moisture and vapour barrier formulated to prevent water seepage and permeation in building and construction substrates. Use when relative humidity exceeds the required levels.



- 1 Approved Engineered Timber Flooring
- 2 Regupol® 6010 8/4mm Acoustic Underlay
- 3 Regupol Green Tape
- 4 Concrete Substrate Prepared to AS1884-2012

Please Note: Not all Engineered Timber Floors are approved over the dimpled acoustic underlay. Contact Regupol Australia to check compatibility with the selected Engineered Board.



DUAL BOND **ENGINEERED TIMBER**

with Regupol® 6010 8/4mm

This system reflects a typical **residential** application with approved Engineered Timber Floor Covering. For all other applications please contact Regupol's Technical Division. Please note that the drawings are not to scale and are for illustration purposes only.



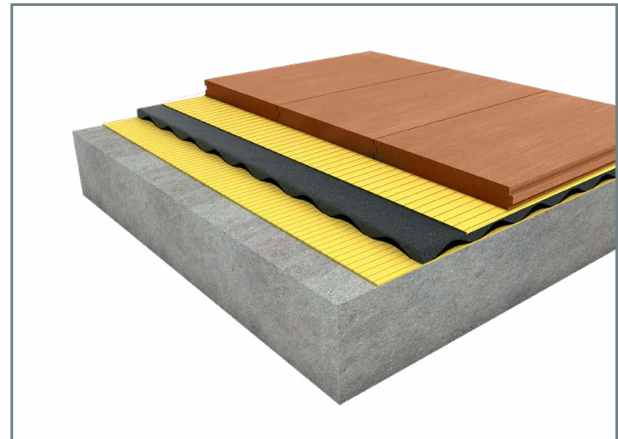
Adhesive and Sealer Information








Regupol One Part Polyurethane Adhesive is an elastomeric moisture cured, solvent free polyurethane adhesive. The adhesive is suitable for internal and external wet and dry areas.

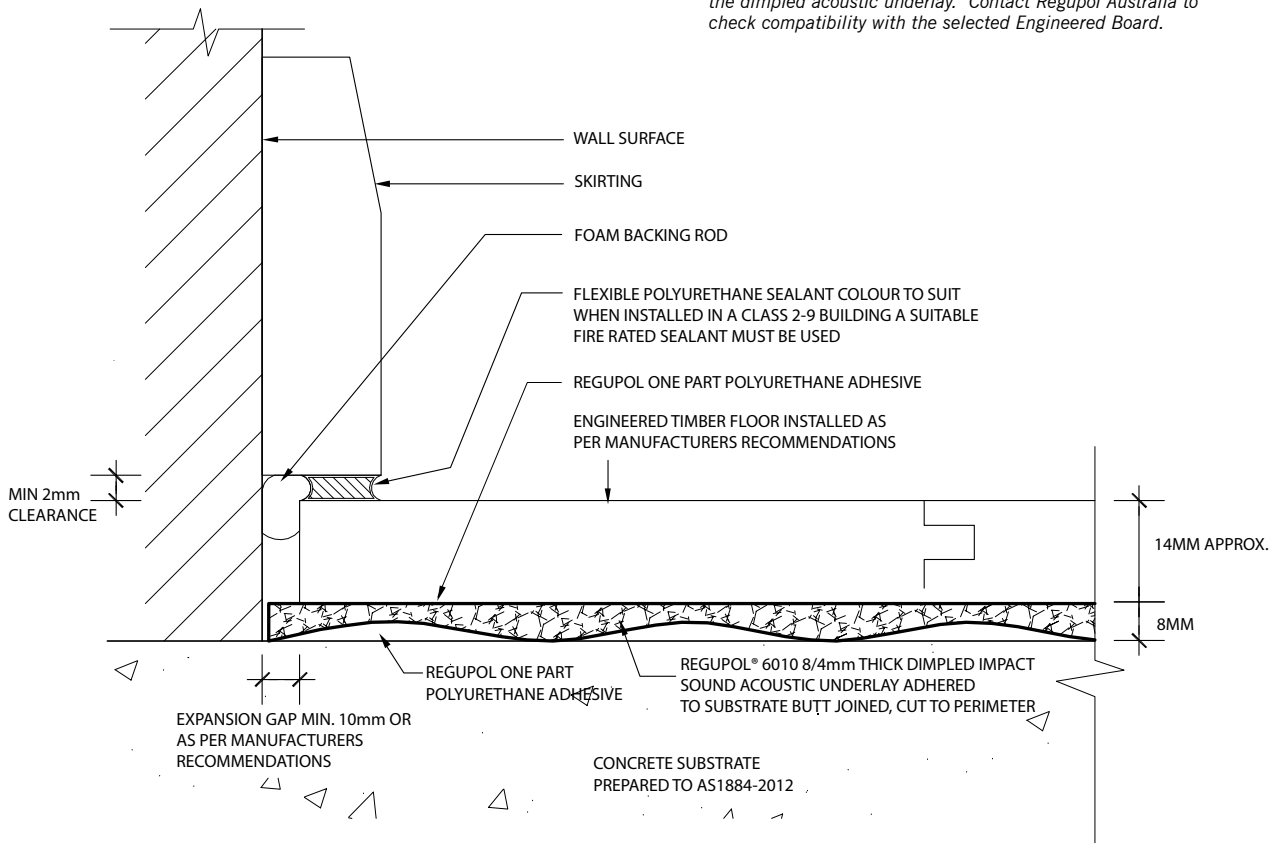


Regupol Two Part Water Based Epoxy Moisture Sealer is a high performance; water based two component epoxy moisture and vapour barrier formulated to prevent water seepage and permeation in building and construction substrates. Use when relative humidity exceeds the required levels.



- 1  Approved Engineered Timber Floor
- 2  Regupol One Part Polyurethane Adhesive
- 3  Regupol® 6010 8/4mm Acoustic Underlay
- 4  Regupol One Part Polyurethane Adhesive
- 5  Concrete Substrate Prepared to AS1884-2012

Please Note: Not all Engineered Timber Floors are approved over the dimpled acoustic underlay. Contact Regupol Australia to check compatibility with the selected Engineered Board.





TIMBER FLOORS

SOUNDPROOFING ENGINEERED TIMBER AND LAMINATE FLOORS
WITH REGUPOL® 6010 10MM ACOUSTIC UNDERLAY



REGUPOL® 6010 10MM

Regupol® 6010 is a soundproofing acoustic underlay manufactured from recycled SBR rubber, bound with polyurethane. The product is a popular choice under floating timber floors, offering improved impact sound noise levels up to 20dB. **Regupol® 6010 10mm** is a soundproofing acoustic underlay designed to isolate approved floor finishes from the main structure of the building, reducing impact energy generated by general footfall.

Benefits include:

- German quality guaranteed Minimises construction heights
- Suitable for use with under floor heating
- Protects expansion joints
- PVC free
- Made from recycled materials
- Manufactured and certified to OHAS 18001:2007, DIN ISO 9001:2008, DIN ISO 14001:2004 Management Systems

Product Data - Rolls

Rolls 1.25m x 20lm
 Thickness 10mm



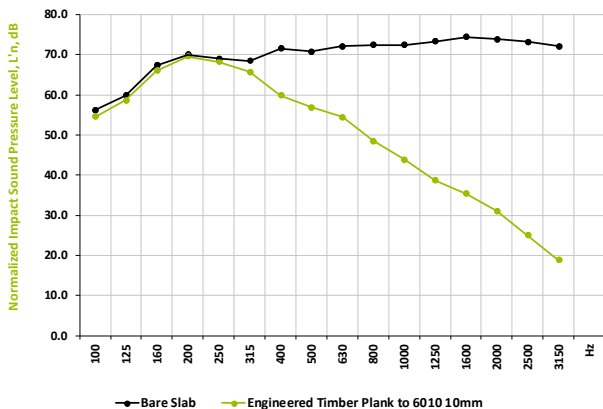
Typical application under engineered timber floor



Regupol® 6010 is manufactured using recycled SBR rubber

Engineered Timber Normalized Impact Sound Pressure Levels

Tested at CSIRO, in accordance with ISO 140-8: 2006 (E), ISO 140-6-2006, AS ISO 717.2-2004, ASTM E989-89. Test area 10.8m²
 Results can vary when different floors are installed and/or if bonded.



REPORT RG087 - REGUPOL® 6010 10MM

Layer of 14mm Engineered Timber (floating), to Regupol® 6010 10mm, to 150mm Concrete Slab (no ceiling).

Ln,w 58 dB	Improvement ΔLw 18dB	IIC 50	Complies with BCA Part F5.3 Impact Sound
------------	----------------------	--------	--

FLOATING TIMBER ENGINEERED OR LAMINATE

with Regupol® 6010 10mm

This system reflects a typical **residential** application with approved Engineered Timber Floor Covering. For all other applications please contact Regupol's Technical Division. Please note that the drawings are not to scale and are for illustration purposes only.



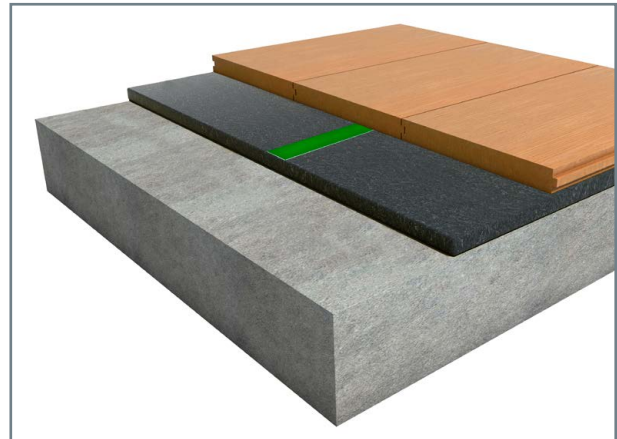
Tape & Sealer Information



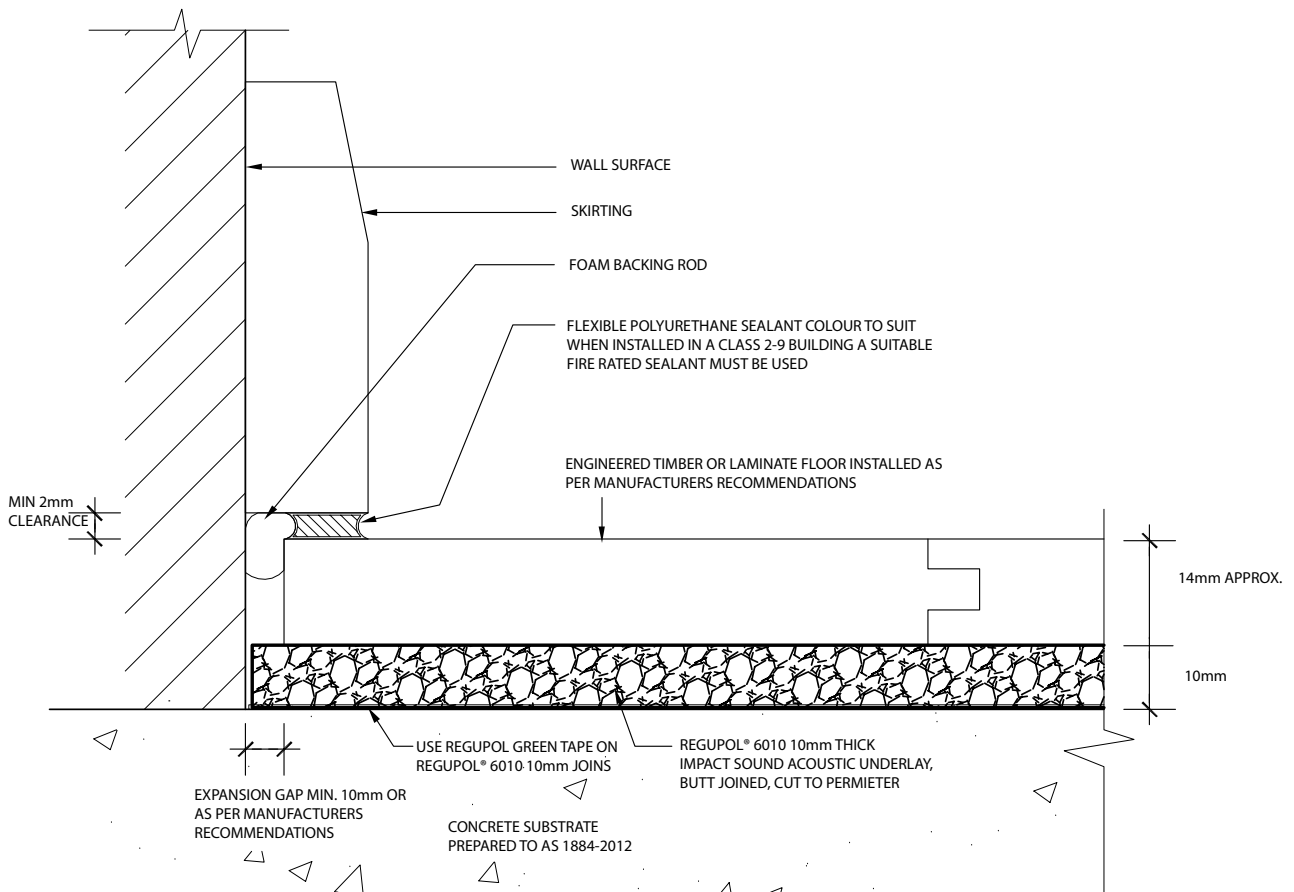
Regupol Green Tape is a single sided 72mm wide by 25m long cloth tape, used to join loose laid acoustic underlay.



Regupol Two Part Water Based Epoxy Moisture Sealer is a high performance; water based two component epoxy moisture and vapour barrier formulated to prevent water seepage and permeation in building and construction substrates. Use when relative humidity exceeds the required levels.



- 1 Approved Engineered Timber or Laminate Flooring
- 2 Regupol® 6010 10mm Acoustic Underlay
- 3 Regupol Green Tape
- 4 Concrete Substrate Prepared to AS1884-2012



DUAL BOND TIMBER **ENGINEERED OR LAMINATE**

with Regupol® 6010 10mm

This system reflects a typical **residential** application with approved Engineered Timber Floor Covering. For all other applications please contact Regupol's Technical Division. Please note that the drawings are not to scale and are for illustration purposes only.



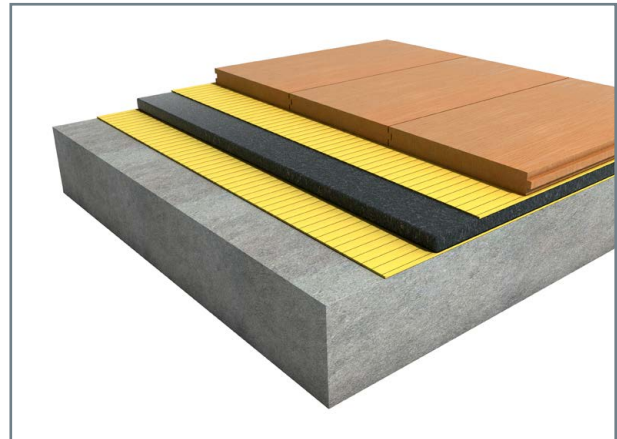
Adhesive and Sealer Information





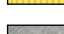


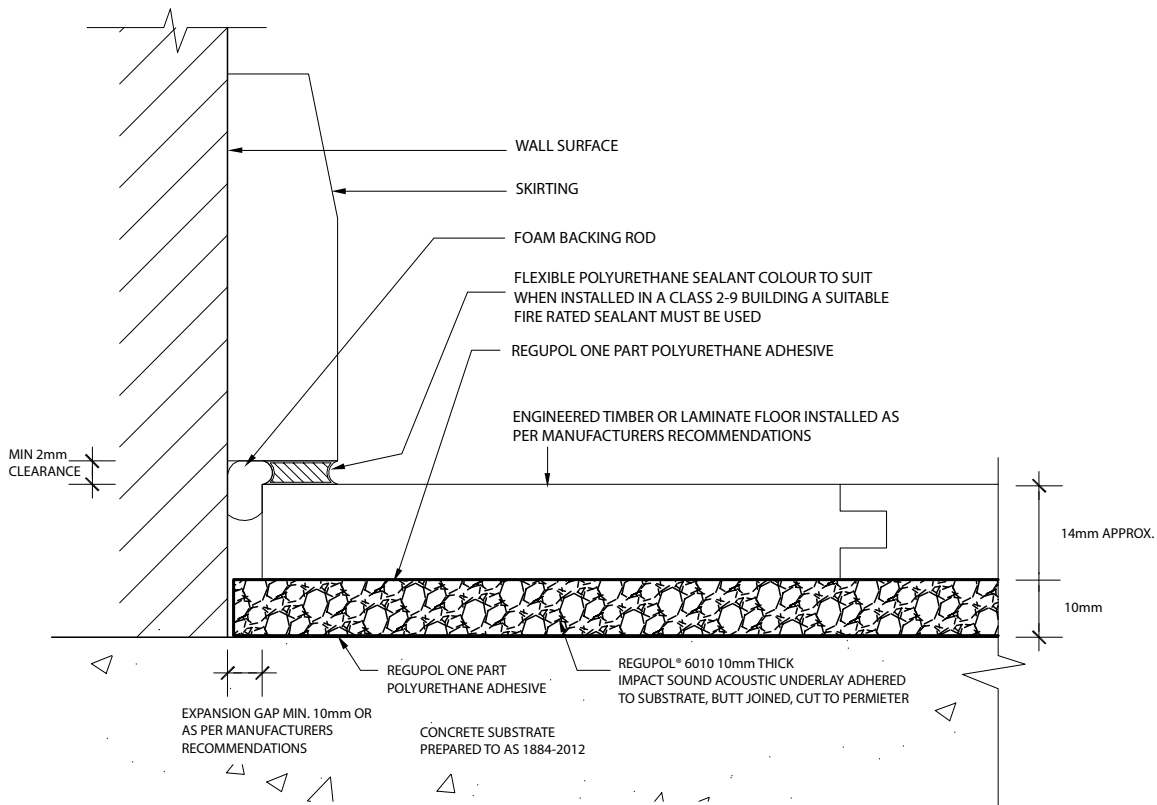
Regupol One Part Polyurethane Adhesive is an elastomeric moisture cured, solvent free polyurethane adhesive. The adhesive is suitable for internal and external wet and dry areas.



Regupol Two Part Water Based Epoxy Moisture Sealer is a high performance; water based two component epoxy moisture and vapour barrier formulated to prevent water seepage and permeation in building and construction substrates. Use when relative humidity exceeds the required levels.



- 1  Approved Engineered Timber or Laminate Flooring
- 2  Regupol One Part Polyurethane Adhesive
- 3  Regupol® 6010 10mm Acoustic Underlay
- 4  Regupol One Part Polyurethane Adhesive
- 5  Concrete Substrate Prepared to AS1884-2012





TIMBER FLOORS

SOUNDPROOFING T&G TIMBER AND PLYWOOD FLOORS
WITH REGUPOL® 6010 17/8MM ACOUSTIC UNDERLAY



REGUPOL® 6010 17/8MM

Regupol® 6010 17/8mm dimple is a soundproofing acoustic underlay manufactured from recycled SBR rubber, bound with polyurethane. The product is made to a specific density and finished in a 3D dimple profile. The finished product is technically superior when it comes solid T&G timber & plywood floors. The dimple profile allows for the impact sound generated to reduce and dissipate.

Benefits include:

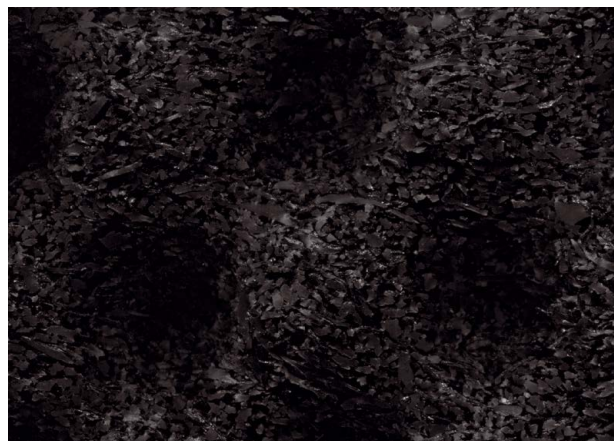
- German quality guaranteed
- Minimises construction heights
- Suitable for use with under floor heating
- Protects expansion joints
- PVC free
- Made from recycled materials
- Manufactured and certified to OHAS 18001:2007, DIN ISO 9001:2008, DIN ISO 14001:2004 Management Systems

Product Data

Rolls 1.25m x 10m
 Thickness 17mm Dimpled



Typical application under T&G and plywood timber system

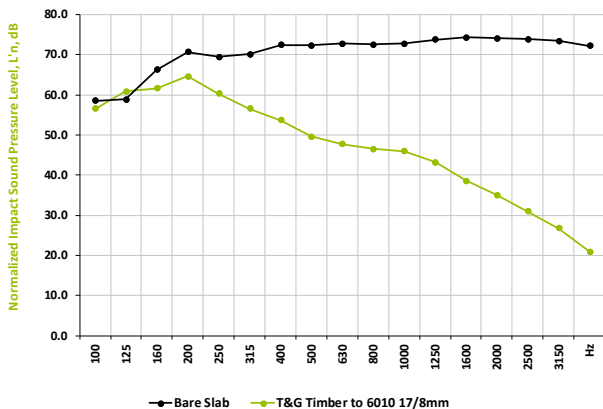


Regupol® 6010 17/8mm is manufactured using recycled SBR rubber

T&G Timber Normalized Impact Sound Pressure Levels - Indicative Result Only*

Tested at CSIRO, sample was bonded together and fixed to the concrete slab. Sample size 1200mm x 1200mm.

* Sample size was not full laboratory tested and is only indicative of result. Results can vary when different floors are installed and/or if bonded.



REPORT RG018 - REGUPOL® 6010 17/8MM

Layer of 19mm T&G Timber, bonded to 18mm Yellow Tongue, bonded to Regupol® 6010 17/8mm, to 170mm Concrete Slab.

Ln,w 53 dB	Improvement ΔLw 27dB	IIC 55	Indicative Result Only
------------	----------------------	--------	------------------------

T&G/OVERLAY TIMBER FLOORS OVER PLYWOOD

with Regupol® 6010 17/8mm

This system reflects a typical **residential** application with approved T&G and overlay timber floors. For all other applications please contact Regupol's Technical Division. Please note that drawings are not to scale and are for illustration purposes only.



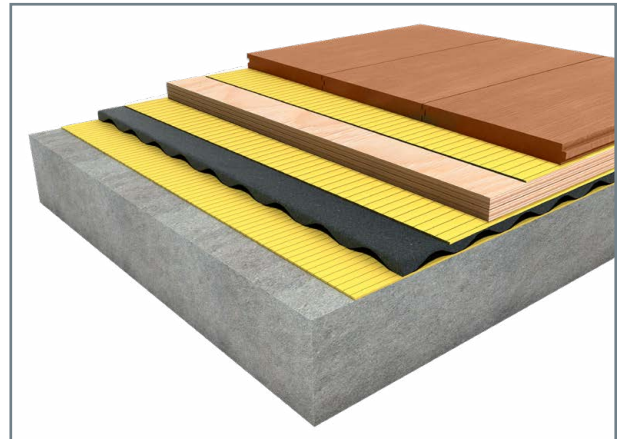
Adhesive and Sealer Information



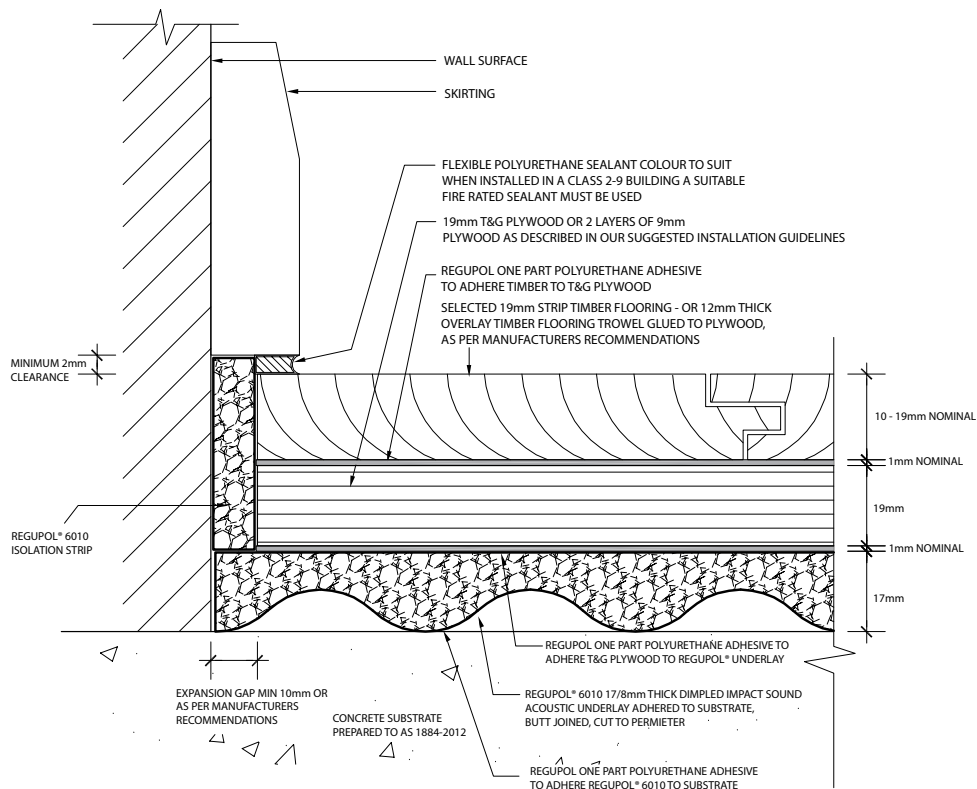
Regupol One Part Polyurethane Adhesive is an elastomeric moisture cured, solvent free polyurethane adhesive. The adhesive is suitable for internal and external wet and dry areas.



Regupol Two Part Water Based Epoxy Moisture Sealer is a high performance; water based two component epoxy moisture and vapour barrier formulated to prevent water seepage and permeation in building and construction substrates. Use when relative humidity exceeds the required levels.



- 1 Approved T&G and Overlay Timber Flooring
- 2 Regupol One Part Polyurethane Adhesive
- 3 19mm T&G Plywood or 2 Layers of 9mm Plywood
- 4 Regupol One Part Polyurethane Adhesive
- 5 Regupol® 6010 17/8mm Acoustic Underlay
- 6 Regupol One Part Polyurethane Adhesive
- 7 Concrete Substrate Prepared to AS1884-2012



REGUPOL® AND THE ENVIRONMENT

Regupol®

Regupol® is a global success story. Back in the early 1960's, BSW GmbH had the ingenuity to manufacture recycled products from waste resources. The **Regupol®** brand represents the materials that make it; **Recycled Gummi Rubber** and **Polyurethane**.

The **Regupol®** brand is one of the world's largest users of recycled rubber; reducing, recycling and re-using it in the manufacture of a broad range of rubber flooring and acoustic underlay products. To maintain our high level of product quality, we actively seek out sustainable manufacturers of rubber, PU foams, EPDM rubber, cork and other sustainable materials that make up our product ranges. No production waste is land filled – all off-cuts and remnants are re-cycled and re-used. Every production process and product is examined with regard to environmental capabilities, ensuring minimal or zero negative environmental impact.



GECA

Recycled materials and products, such as **Regupol®** can play such a major role in the design and construction of environmentally friendly and sustainable buildings. To ensure this, we have had many of the **Regupol®** Impact Sound Acoustic Underlays Good Environmental Choice Australia (GECA) certified for their environmental contribution.

The independent verification performed by GECA shows that the acoustic range of **Regupol®** recycled products are environmentally preferable and meet the requirements of GECA 25-2011 v2 - Floor Coverings Standard. Additionally, the GECA 25-2011 v2 Floor Coverings Standard is recognised by the Green Building Council of Australia (GBCA) under their Assessment Framework for Product Certification Schemes. The selected **Regupol®** products will provide a Level A sustainability factor weighting (100%) within the Green Star Sustainable Products Calculator.

Look for the Good Environmental Choice Australia tick to confirm if the product has been independently certified. For more information on GECA visit www.geca.org.au



NATSPEC

NATSPEC is a national not-for-profit organisation that is owned by the design, build, construct and property industry through professional associations and government property groups. NATSPEC's objective is to improve the construction quality and productivity of the built environment through leadership of information. NATSPEC is the preferred specification system for major building professionals. Government departments, contractors, consultants and architects endorse NATSPEC.

Branded worksections are technical worksections developed by NATSPEC in conjunction with a manufacture known as a NATSPEC Product Partner. Each branded worksection is based on the associated NATSPEC generic worksection and shares the same classification number. It is a MS Word document Template which follows the NATSPEC style and can be customised. Regupol Australia are a NATSPEC Product Partner, offering a national specification for our acoustic floor underlays under the 0473 REGUPOL in acoustic floor underlays branded work section.

For more information on NATSPEC visit www.natspec.com.au

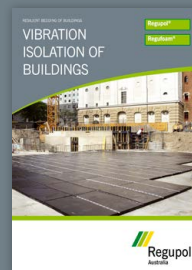
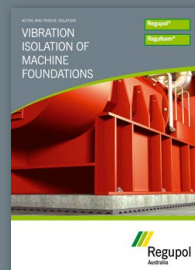
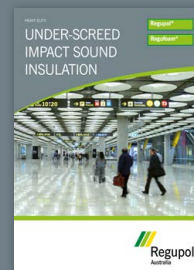
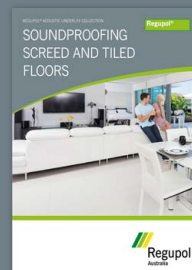
**REGUPOL AUSTRALIA
HEAD OFFICE & WAREHOUSE**
155 Smeaton Grange Road
SMEATON GRANGE NSW 2567
Australia

Tel. +61 2 4624 0050
Fax +61 2 4647 4403
sales@regupol.com.au
www.regupol.com.au

**REGUPOL AUSTRALIA
GOLD COAST WAREHOUSE**
Unit 3, 14 Hopper Avenue
ORMEAU QLD 4208
Australia

Tel. 1800 418 909

Download or request additional information about the Regupol family of
Vibration Isolation and Impact Sound Proofing products at www.regupol.com.au



DISCLAIMER

Information contained within this brochure is given in good faith as a suggested guide in specifying Regupol® Impact Sound Acoustic Underlays, no guarantee or warranty is expressed or implied. Any circumstances not covered by this guide should be referred to Regupol (Australia) Pty Limited or its Distributors for any particular attention required. No liability is accepted by Regupol (Australia) Pty Limited, our employees, distributors, representatives or agents, for any loss or damage, direct or indirect, that may result from using the information and/or suggestions as actual conditions for use that are beyond our control. All materials should be checked/tested for their suitability to the prevailing site conditions.