

REGUPOL® ACOUSTIC UNDERLAY COLLECTION

Regupol®

SOUNDPROOFING SCREED AND TILED FLOORS



Regupol
Australia

REGUPOL® AND THE ENVIRONMENT

Regupol®

Regupol® is a global success story. Back in the early 1960's, BSW GmbH had the ingenuity to manufacture recycled products from waste resources. The **Regupol®** brand represents the materials that make it; **Recycled Gummi Rubber** and **Polyurethane**.

The **Regupol®** brand is one of the world's largest users of recycled rubber; reducing, recycling and re-using it in the manufacture of a broad range of rubber flooring and acoustic underlay products. To maintain our high level of product quality, we actively seek out sustainable manufacturers of rubber, PU foams, EPDM rubber, cork and other sustainable materials that make up our product ranges. No production waste is land filled – all off-cuts and remnants are re-cycled and re-used. Every production process and product is examined with regard to environmental capabilities, ensuring minimal or zero negative environmental impact.



GECA

Recycled materials and products, such as **Regupol®** can play such a major role in the design and construction of environmentally friendly and sustainable buildings. To ensure this, we have had many of the **Regupol®** Impact Sound Acoustic Underlays Good Environmental Choice Australia (GECA) certified for their environmental contribution.

The independent verification performed by GECA shows that the acoustic range of **Regupol®** recycled products are environmentally preferable and meet the requirements of GECA 25-2011 v2 - Floor Coverings Standard. Additionally, the GECA 25-2011 v2 Floor Coverings Standard is recognised by the Green Building Council of Australia (GBCA) under their Assessment Framework for Product Certification Schemes. The selected **Regupol®** products will provide a Level A sustainability factor weighting (100%) within the Green Star Sustainable Products Calculator.

Look for the Good Environmental Choice Australia tick to confirm if the product has been independently certified. For more information on GECA visit www.geca.org.au



NATSPEC

NATSPEC is a national not-for-profit organisation that is owned by the design, build, construct and property industry through professional associations and government property groups. NATSPEC's objective is to improve the construction quality and productivity of the built environment through leadership of information. NATSPEC is the preferred specification system for major building professionals. Government departments, contractors, consultants and architects endorse NATSPEC.

Branded worksections are technical worksections developed by NATSPEC in conjunction with a manufacture known as a NATSPEC Product Partner. Each branded worksection is based on the associated NATSPEC generic worksection and shares the same classification number. It is a MS Word document Template which follows the NATSPEC style and can be customised. Regupol Australia are a NATSPEC Product Partner, offering a national specification for our acoustic floor underlays under the 0473 REGUPOL in acoustic floor underlays branded work section.

For more information on NATSPEC visit www.natspec.com.au

REGUPOL® ACOUSTIC SYSTEMS

The way we treat soundproofing of floor spaces has a big impact on the well being of those that live amongst it. To play our part, this is our BCA solutions for impact sound insulation of floors. We have taken the most requested floor finishes and matched them with the **Regupol® Acoustic Underlay** that best suits the application. **This is Regupol® Acoustics Systems... simplified for screed and tiled floors.**

The BCA's objectives are to safeguard occupants in residential buildings from illness or loss of amenity resulting from excessive noise. The BCA Part F5.4 Sound insulation rating of floors, requires a floor in a Class 2 or 3 building to have an impact sound insulation rating of no less than $L_{n,w}$ 62. The $L_{n,w}$ rating is a measure of the ability of the floor system to suppress footfall noise and noise from other impacts. The lower this rating, the higher the impact sound reduction performance of the system.

The BCA F5.3 Determination of Impact Sound Insulation Ratings requires:

- (a) A floor in a building required to have an impact sound insulation rating must -
 - (i) have the required value for weighted normalised impact sound pressure level ($L_{n,w}$) determined in accordance with AS ISO 717.2 using results from laboratory measurements; or
 - (ii) comply with Specification F5.2

These **Regupol® Acoustic Systems** have been tested in the laboratory in accordance with AS ISO 717.2 "Acoustics – Rating of sound insulation in buildings and of building elements". For impact sound insulation testing of floors AS ISO 717.2 Part 2. Impact sound Insulation is used. They are typical residential applications and are not exhaustive of our products and their applications. Many other acoustic systems are available for specific projects and acoustic outcomes. Contact us for further resources and access to our acoustic library of products and testing data.



Regupol® a popular choice for multi-residential construction projects



DIRECT FIX TILES

SOUNDPROOFING TILED FLOORS
WITH REGUPOL® 4515 4.5MM ACOUSTIC UNDERLAY



Regupol® 4515 impact soundproofing of approved tiled flooring - direct fix

REGUPOL® 4515 4.5MM

Regupol® 4515 a soundproofing acoustic underlay manufactured from high quality PUR foam granulates and cork, bound with polyurethane. This unique material composition produces a shore hardness which makes the acoustic underlay suitable to be installed directly under approved tile, stone and marble floor finishes.

Benefits include:

- German quality guaranteed
- Minimises construction heights
- Suitable for use with under floor heating
- Protects expansion joints
- Light weight material
- PVC free
- Excellent adhesion qualities
- Low odour
- Low VOC
- Available in modular tiles for easy installation.
- Crack suppressant
- Made from recycled materials
- Manufactured and certified to OHAS 18001:2007, DIN ISO 9001:2008, DIN ISO 14001:2004 Management Systems

Product Data - Rolls and Tiles

Rolls	1 m x 20m
Modular Tiles	1050mm x 500mm
Thickness	4.5mm



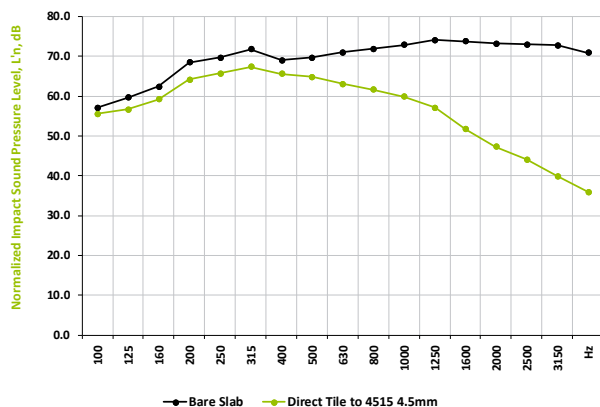
Typical application under approved tiled floors - direct fix



Regupol® 4515 4.5mm is manufactured from recycled PUR foam and cork

Direct Tile Normalized Impact Sound Pressure Levels

Tested at CSIRO Hightett, in accordance with ISO 140-8: 1997 (E), ISO 140-6, AS ISO 717.2-2004, ASTM E989-89. Test area 11.7m²
Results can vary when different floors are installed and/or if bonded.



REPORT RG019 - REGUPOL® 4515 4.5MM

Layer of 10mm Porcelain Tile, bonded to Regupol® 4515 4.5mm, bonded to 150mm Concrete Slab (no ceiling).

Ln,w 61 dB

Improvement
ΔLw 17dB

IIC 49

Complies with BCA
Part F5.3 Impact
Sound

DRY AREA TILED FLOOR

with Regupol® 4515 4.5mm

This system reflects a typical **residential** application with approved Tiled Floor Coverings. For all other applications please contact Regupol's Technical Division. Please note that drawings are not to scale and are for illustration purposes only.



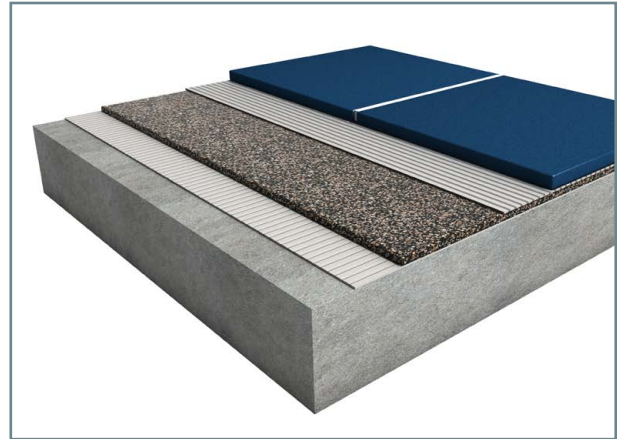
Adhesive and Sealer Information



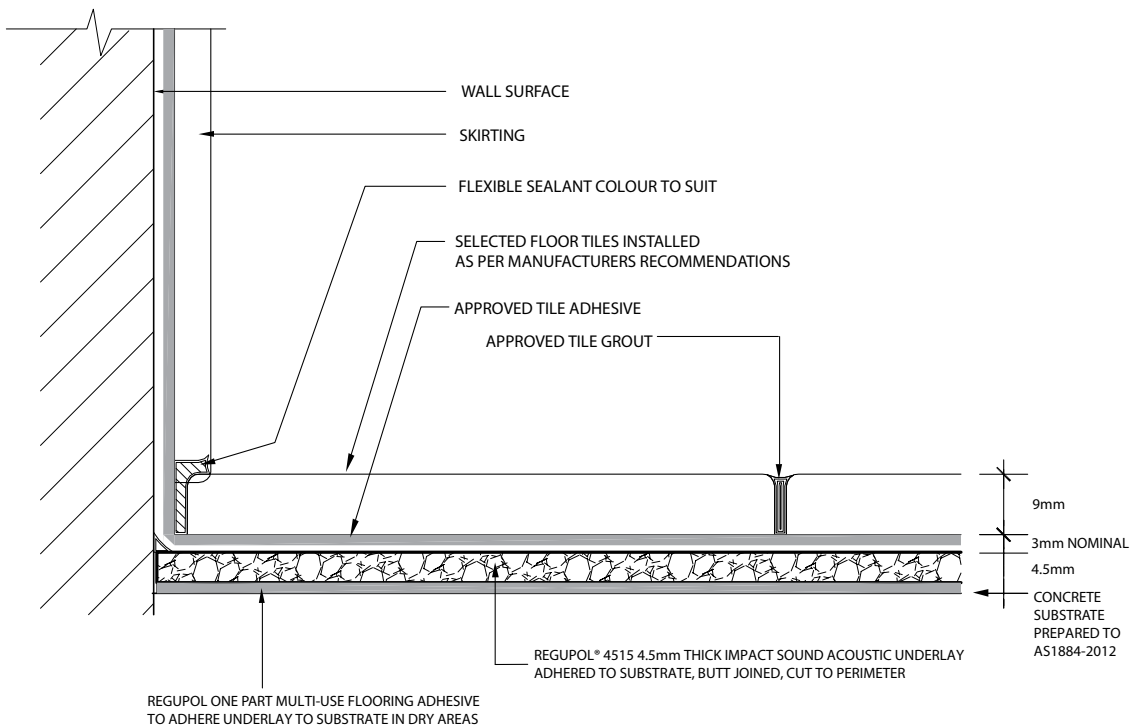
Regupol One Part Multi-Use Adhesive is a water based synthetic polymer, VOC compliant, multi-use flooring adhesive, with water resistant properties. This adhesive was specifically formulated to bond selected Regupol® products to most common interior sub-floors. The product is suitable for dry area installations only.



Regupol Primer 444 is a one part, solvent free, water based synthetic polymer resin formulated to be used on concrete substrates. Regupol Primer 444 is suitable for dry area installations only.



- 1  Approved Tile Grout
- 2  Selected Tile Floor Covering
- 3  Approved Tile Adhesive
- 4  Regupol® 4515 4.5mm Acoustic Underlay
- 5  Regupol One Part Multi-Use Flooring Adhesive
- 6  Concrete Substrate Prepared to AS1884-2012 with Regupol 444



WET AREA TILED FLOOR

with Regupol® 4515 4.5mm

This system reflects a typical **residential** application with approved Tiled Floor Coverings. For all other applications please contact Regupol's Technical Division. Please note that drawings are not to scale and are for illustration purposes only.



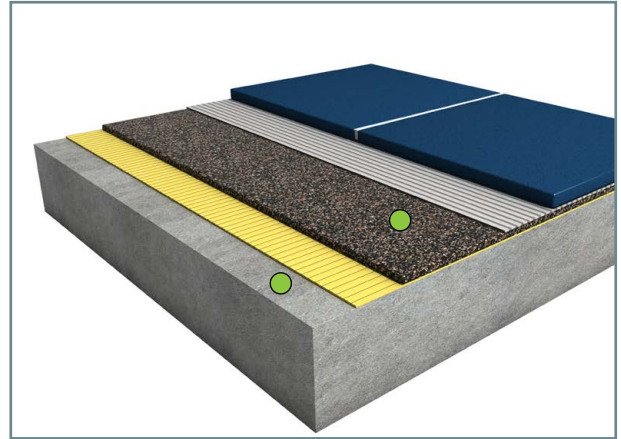
Adhesive and Sealer Information



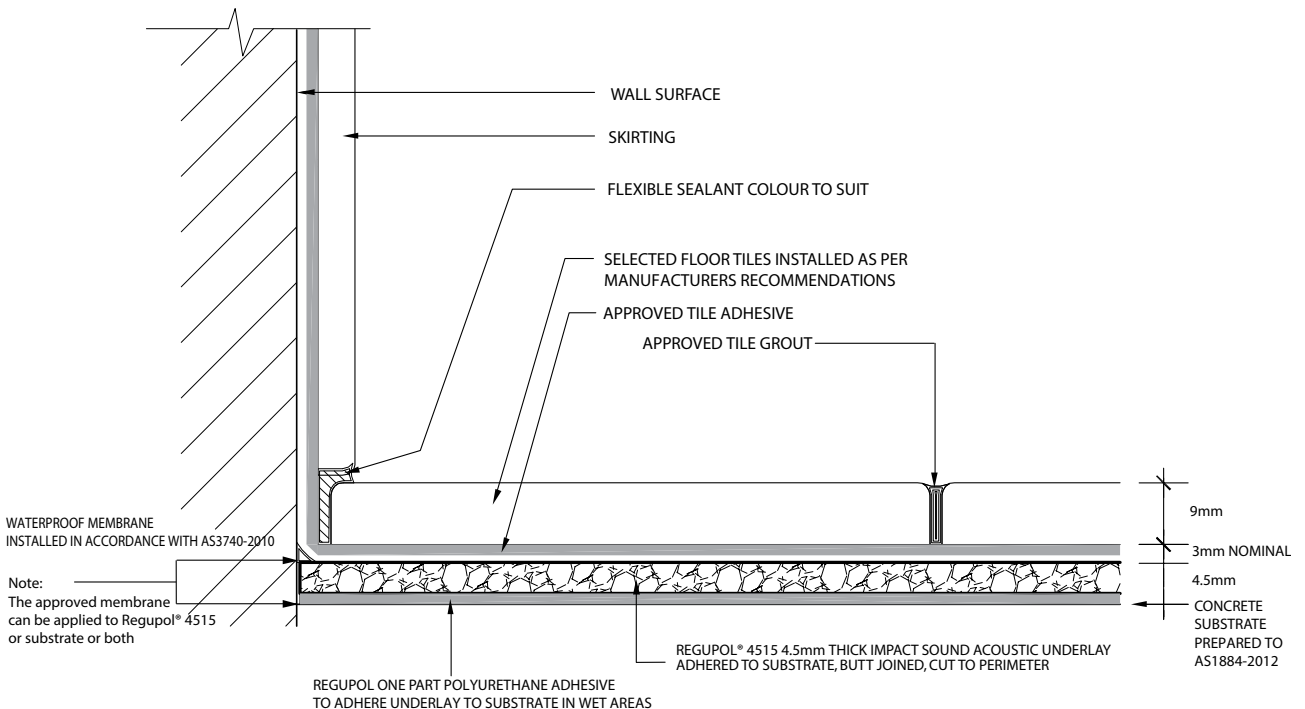
Regupol One Part Polyurethane Adhesive is an elastomeric moisture cured, solvent free polyurethane adhesive. The adhesive is suitable for internal and external wet and dry areas.



Regupol Two Part Water Based Epoxy Moisture Sealer is a high performance; water based two component epoxy moisture and vapour barrier formulated to prevent water seepage and permeation in building and construction substrates. Use when relative humidity exceeds the required levels.



- 1 Approved Tile Grout
 - 2 Selected Tile Floor Covering
 - 3 Approved Tile Adhesive
 - 4 Regupol® 4515 4.5mm Acoustic Underlay
 - 5 Regupol One Part Polyurethane Adhesive
 - 6 Concrete Substrate Prepared to AS1884-2012
- Approved waterproof membrane installed in accordance with AS3740-2010 and can be applied to Regupol® 4515 or concrete substrate or both.





SCREEDED TILE FLOORS

SOUNDPROOFING SCREEDED TILE FLOORS
WITH REGUPOL® 4515 4.5MM ACOUSTIC UNDERLAY



Regupol® 4515 impact soundproofing of approved screeded floor with tile

REGUPOL® 4515 4.5MM

Regupol® 4515 a soundproofing acoustic underlay manufactured from high quality PUR foam granulates and cork, bound with polyurethane. This unique material composition produces a shore hardness which makes the acoustic underlay suitable to be installed directly under approved tile, screed, stone and marble floor finishes.

Benefits include:

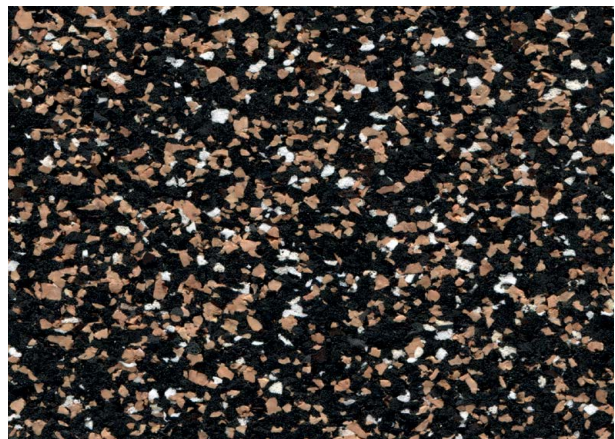
- German quality guaranteed
- Minimises construction heights
- Suitable for use with under floor heating
- Protects expansion joints
- Light weight material
- PVC free
- Excellent adhesion qualities
- Low odour
- Low VOC
- Available in modular tiles for easy installation.
- Crack suppressant
- Made from recycled materials
- Manufactured and certified to OHAS 18001:2007, DIN ISO 9001:2008, DIN ISO 14001:2004 Management Systems

Product Data - Rolls and Tiles

Rolls	1m x 20m
Modular Tiles	1050mm x 500mm
Thickness	4.5mm



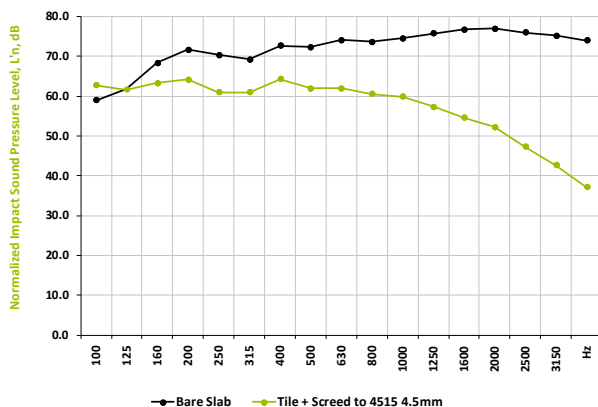
Typical application under approved bonded screed floor with tiles



Regupol® 4515 4.5mm is manufactured from recycled PUR foam and cork

Tiles with Screed Normalized Impact Sound Pressure Levels

Tested at CSIRO Hightett, in accordance with ISO 140-8: 1997 (E), ISO 140-6, AS ISO 717.2-2004, ASTM E989-89. Test area 10.8m²
Results can vary when different floors are installed and/or if bonded.



REPORT RG094 - REGUPOL® 4515 4.5MM

Layer of 8mm Ceramic Tile, bonded to 30mm Screed Bed, to Regupol® 4515 4.5mm, to 150mm Concrete Slab (no ceiling).

Ln,w 60 dB

Improvement
 ΔL_w 19dB

IIC 50

Complies with BCA
Part F5.3 Impact
Sound

DRY AREA BONDED SCREED & TILE

with Regupol® 4515 4.5mm

This system reflects a typical **residential** application with approved screed beds. For all other applications please contact Regupol's Technical Division. Please note that drawings are not to scale and are for illustration purposes only.



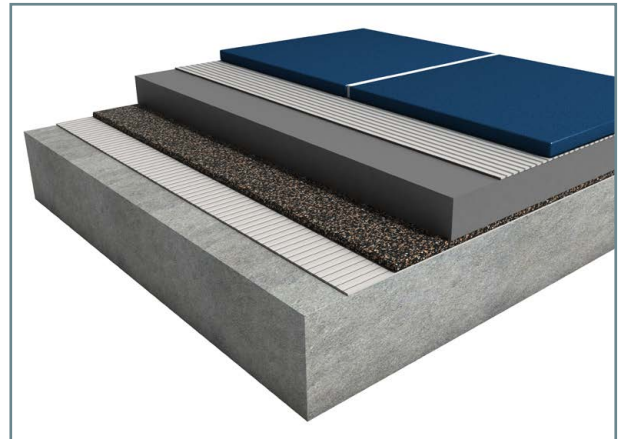
Adhesive Information



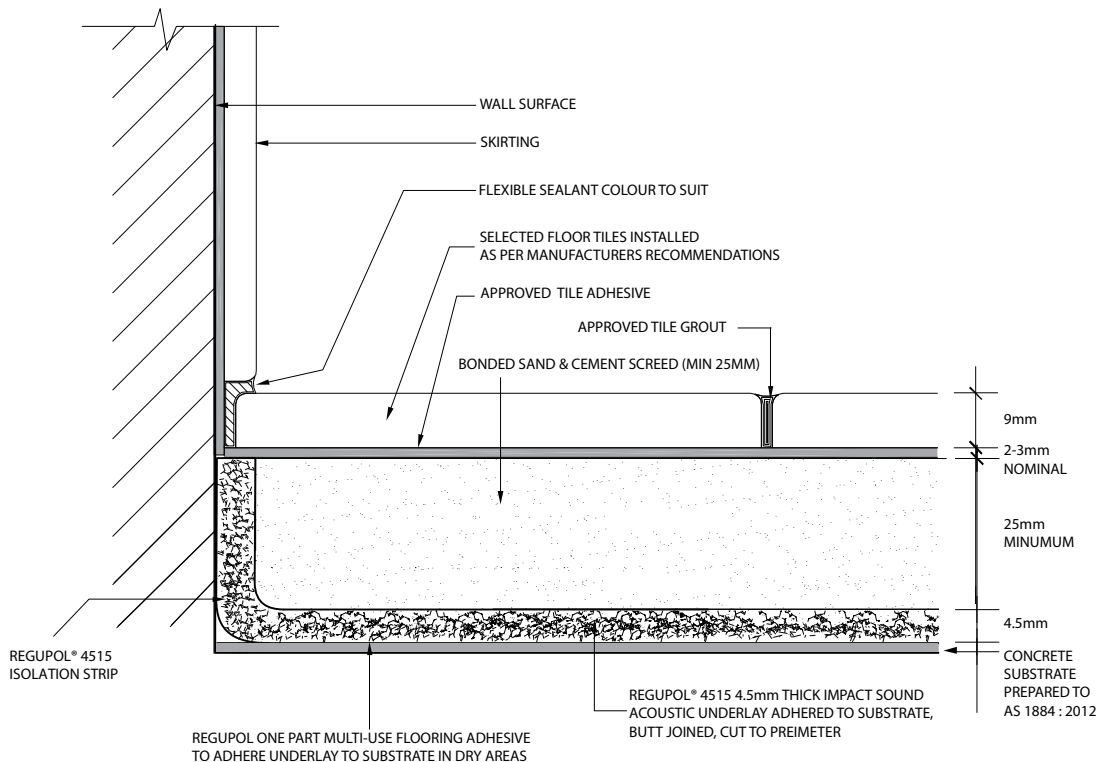
Regupol One Part Multi-Use Flooring Adhesive is a water based synthetic polymer, VOC compliant, multi-use flooring adhesive, with water resistant properties. This adhesive was specifically formulated to bond selected Regupol® products to most common interior sub-floors. The product is suitable for dry area installations only.



Regupol Primer 444 is a one part, solvent free, water based synthetic polymer resin formulated to be used on concrete substrates. Regupol Primer 444 is suitable for dry area installations only.



- 1 Approved Tile Grout
- 2 Selected Tile Floor Covering
- 3 Approved Tile Adhesive
- 4 Bonded Sand & Cement Screed (min 25mm)
- 5 Regupol® 4515 4.5mm Acoustic Underlay
- 6 Regupol One Part Multi-Use Flooring Adhesive
- 7 Concrete Substrate Prepared to AS1884-2012 with Regupol Primer 444



WET AREA BONDED SCREED & TILE

with Regupol® 4515 4.5mm

This system reflects a typical **residential** application with approved screed beds. For all other applications please contact Regupol's Technical Division. Please note that drawings are not to scale and are for illustration purposes only.

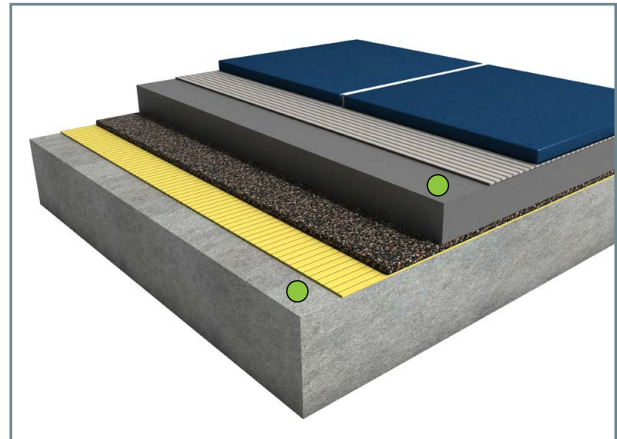
Adhesive Information



Regupol One Part Polyurethane Adhesive is an elastomeric moisture cured, solvent free polyurethane adhesive. The adhesive is suitable for internal and external wet and dry areas.

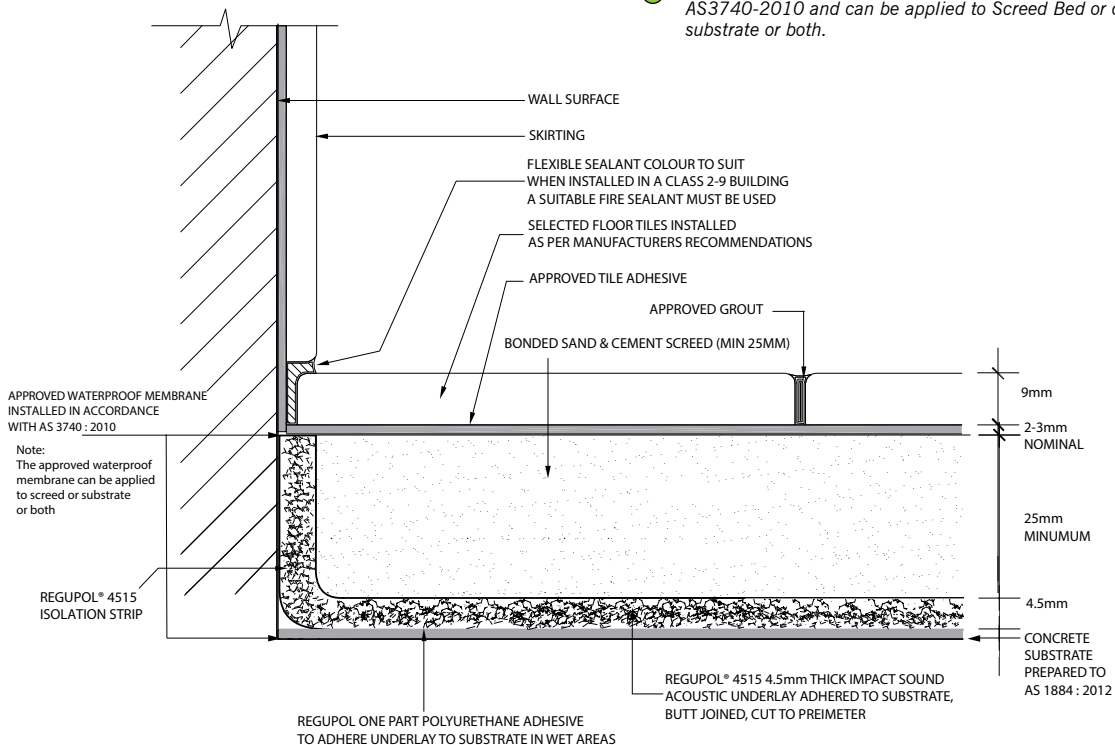


Regupol Two Part Water Based Epoxy Moisture Sealer is a high performance; water based two component epoxy moisture and vapour barrier formulated to prevent water seepage and permeation in building and construction substrates. Use when relative humidity exceeds the required levels.



- 1 Approved Tile Grout
- 2 Selected Tile Floor Covering
- 3 Approved Tile Adhesive
- 4 Bonded Sand & Cement Screed (min 25mm)
- 5 Regupol® 4515 4.5mm Acoustic Underlay
- 6 Regupol One Part Polyurethane Adhesive
- 7 Concrete Substrate Prepared to AS1884-2012

● Approved Waterproof Membrane installed in accordance with AS3740-2010 and can be applied to Screed Bed or concrete substrate or both.





SCREEDED TILE FLOORS

SOUNDPROOFING SCREEDED TILE FLOORS
WITH REGUPOL® 5512 5MM ACOUSTIC UNDERLAY



REGUPOL® 5512 5MM

Regupol® 5512 is a soundproofing acoustic underlay manufactured from recycled materials, bound with polyurethane. The product composition produces a cost effective solution to sound isolate bonded screed beds in wet and dry area installations. The product is also used under a number of hard flooring finishes such as laminates and engineered timber flooring.

Benefits include:

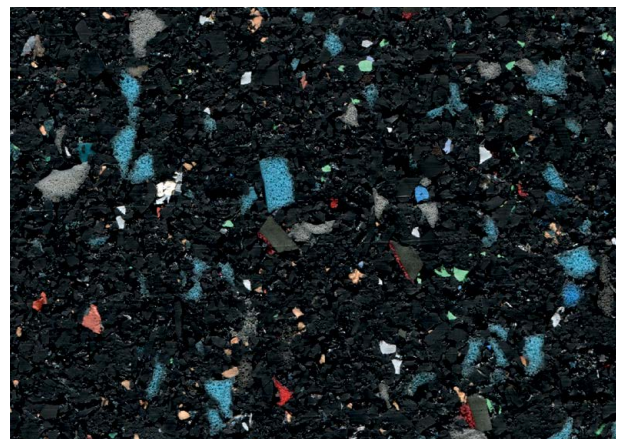
- German quality guaranteed
- Minimises construction heights
- Suitable for use with under floor heating
- Protects expansion joints
- PVC free
- Available in modular tiles for easy installation
- Made from recycled materials
- Manufactured and certified to OHAS 18001:2007, DIN ISO 9001:2008, DIN ISO 14001:2004 Management Systems

Product Data - Rolls and Tiles

Rolls 1.25m x 10lm, 50lm
 Modular Tiles 1050mm x 500mm
 Thickness 5mm



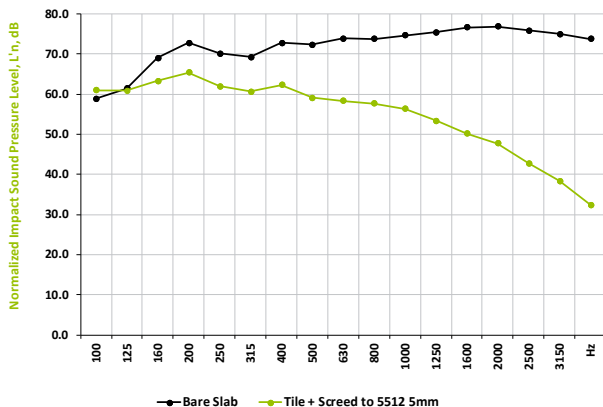
Typical application under bonded screeds with tiles



Regupol® 5512 is manufactured with recycled materials

Tiles with Screed Normalized Impact Sound Pressure Levels

Tested at CSIRO Clayton, in accordance with ISO 140-8: 2006 (E), ISO 140-6-2006, AS ISO 717.2-2004, ASTM E989-89. Test area 10.8m². Results can vary when different floors are installed and/or if bonded.



REPORT RG092 - REGUPOL® 5512 5MM

Layer of 8mm Ceramic Tile, bonded to 30mm Screed Bed, to Regupol® 5512 5mm, to 150mm Concrete Slab (no ceiling).

Ln,w 58 dB	Improvement ΔLw 21dB	IIC 52	Complies with BCA Part F5.3 Impact Sound
------------	----------------------	--------	--

DRY AREA BONDED SCREED & TILE

with Regupol® 5512 5mm

This system reflects a typical **residential** application with an approved Screed Bed. For all other applications please contact Regupol's Technical Division. Please note that the drawings are not to scale and are for illustration purposes only.



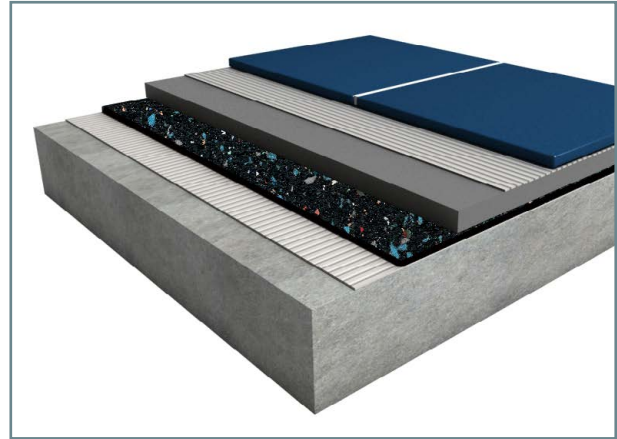
Adhesive and Sealer Information



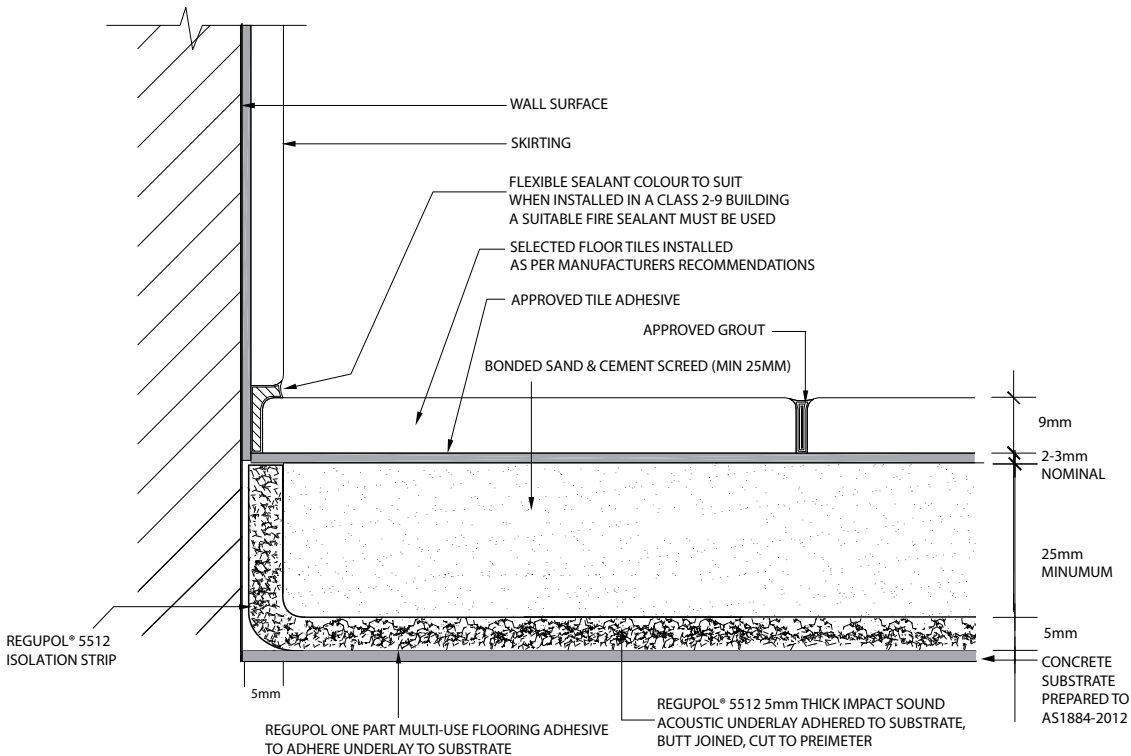
Regupol One Part Multi-Use Adhesive is a water based synthetic polymer, VOC compliant, multi-use flooring adhesive, with water resistant properties. This adhesive was specifically formulated to bond selected Regupol® products to most common interior sub-floors. The product is suitable for dry area installations only.



Regupol Primer 444 is a one part, solvent free, water based synthetic polymer resin formulated to be used on concrete substrates. Regupol Primer 444 is suitable for dry area installations only.



- 1 Approved Tile Grout
- 2 Selected Tile Floor Covering
- 3 Approved Tile Adhesive
- 4 Bonded Sand & Cement Screed (min 25mm)
- 5 Regupol® 5512 5mm Acoustic Underlay
- 6 Regupol One Part Multi-Use Flooring Adhesive
- 7 Concrete Substrate Prepared to AS1884-2012 with Regupol Primer 444



WET AREA BONDED SCREED & TILE

with Regupol® 5512 5mm

This system reflects a typical **residential** application with approved Screed Bed. For all other applications please contact Regupol's Technical Division. Please note that the drawings are not to scale and are for illustration purposes only.

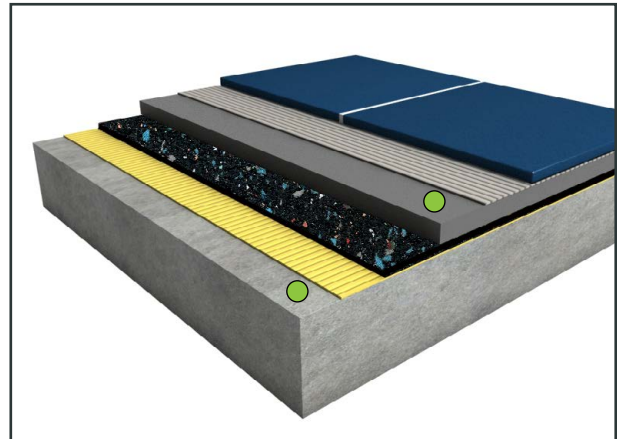
Adhesive and Sealer Information



Regupol One Part Polyurethane Adhesive is an elastomeric moisture cured, solvent free polyurethane adhesive. The adhesive is suitable for internal and external wet and dry areas.

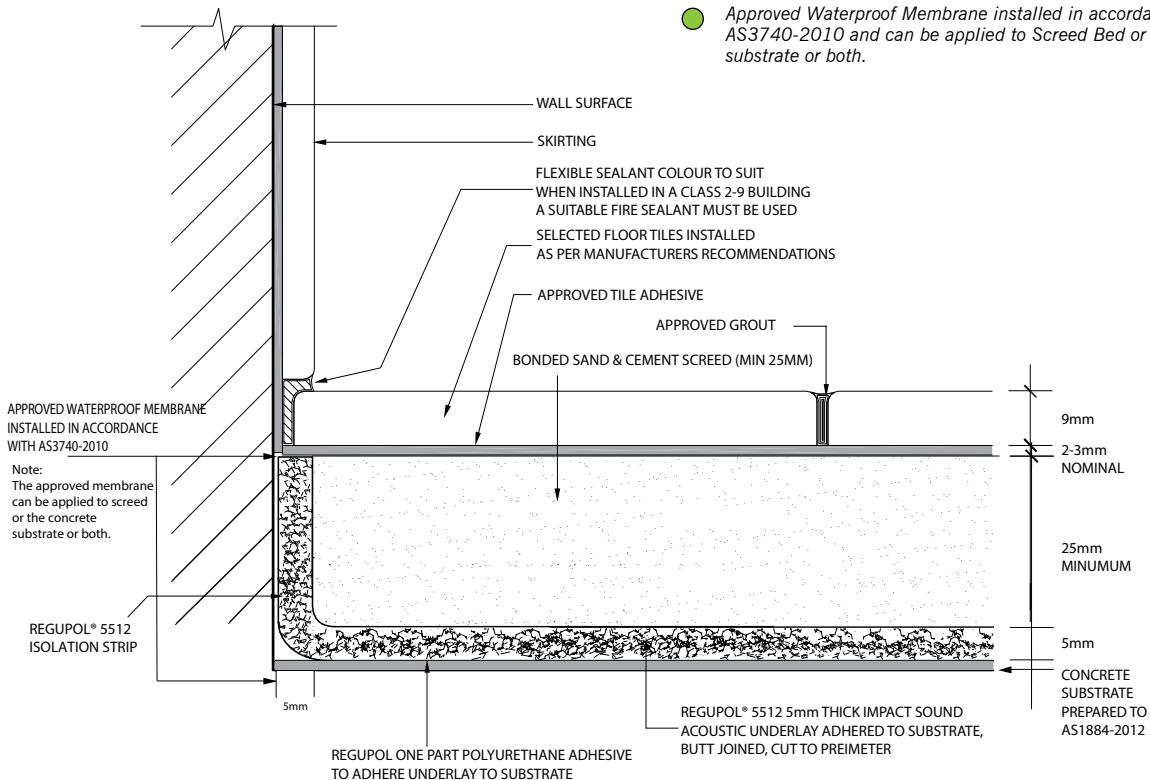


Regupol Two Part Water Based Epoxy Moisture Sealer is a high performance; water based two component epoxy moisture and vapour barrier formulated to prevent water seepage and permeation in building and construction substrates. Use when relative humidity exceeds the required levels.



- 1 Approved Tile Grout
- 2 Selected Tile Floor Covering
- 3 Approved Tile Adhesive
- 4 Bonded Sand & Cement Screed (min 25mm)
- 5 Regupol® 5512 5mm Acoustic Underlay
- 6 Regupol One Part Polyurethane Adhesive
- 7 Concrete Substrate Prepared to AS1884-2012

● Approved Waterproof Membrane installed in accordance with AS3740-2010 and can be applied to Screed Bed or concrete substrate or both.





SCREEDED TILE FLOORS

SOUNDPROOFING SCREEDED TILED FLOORS
WITH REGUPOL® 6015 6/3MM ACOUSTIC UNDERLAY



Regupol® 6015 6/3mm dimple acoustic underlay with bonded screed and tiles

REGUPOL® 6015 6/3MM

Regupol® 6015 dimple is a soundproofing acoustic underlay manufactured from recycled SBR rubber, bound with polyurethane. The product is made to a specific density and finished in 3D dimple profile. **Regupol® 6015** dimple acoustic underlay can be installed in wet and dry area installations under bonded screeds, offering long term performance without collapse or bottoming out.

Benefits include:

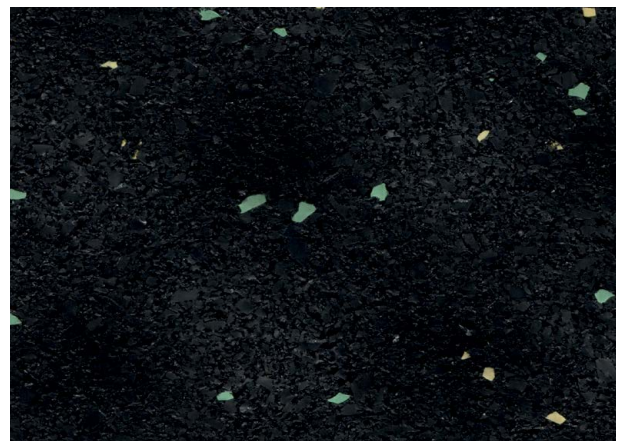
- German quality guaranteed
- Minimises construction heights
- Suitable for use with under floor heating
- Protects expansion joints
- PVC free
- Made from recycled materials
- Manufactured and certified to OHAS 18001:2007, DIN ISO 9001:2008, DIN ISO 14001:2004 Management Systems

Product Data - Rolls

Rolls 1.25m x 20lm
 Thickness 6mm dimpled profile 6/3mm



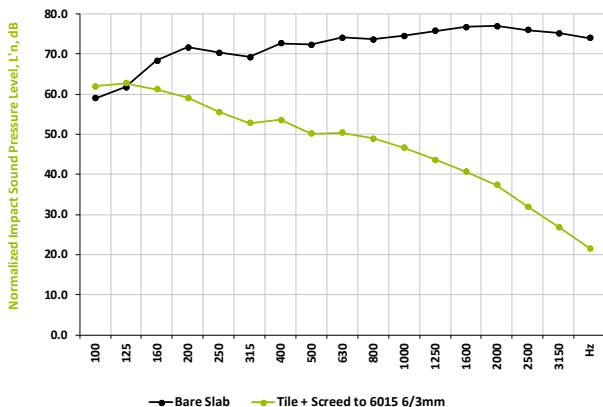
Typical application under bonded screed and tile



Regupol® 6015 is manufactured using recycled SBR rubber

Tiles with Screed Normalized Impact Sound Pressure Levels

Tested at CSIRO Clayton, in accordance with ISO 140-8: 2006 (E), ISO 140-6-2006, AS ISO 717.2-2004, ASTM E989-89. Test area 10.8m²
 Results can vary when different floors are installed and/or if bonded.



REPORT RG095 - REGUPOL® 6015 6/3MM

Layer of 8mm Ceramic Tile; bonded to 30mm Screed Bed; to Regupol® 6015 6/3mm, to 150mm Concrete Slab (no ceiling).

Ln,w 52 dB	Improvement ΔLw 24dB	IIC 57	Complies with BCA Part F5.3 Impact Sound
------------	----------------------	--------	--

DRY AREA BONDED SCREED & TILE

with Regupol® 6015 6/3mm

This system reflects a typical **residential** application with an approved Screed Bed. For all other applications please contact Regupol's Technical Division. Please note that the drawings are not to scale and are for illustration purposes only.



Adhesive Information



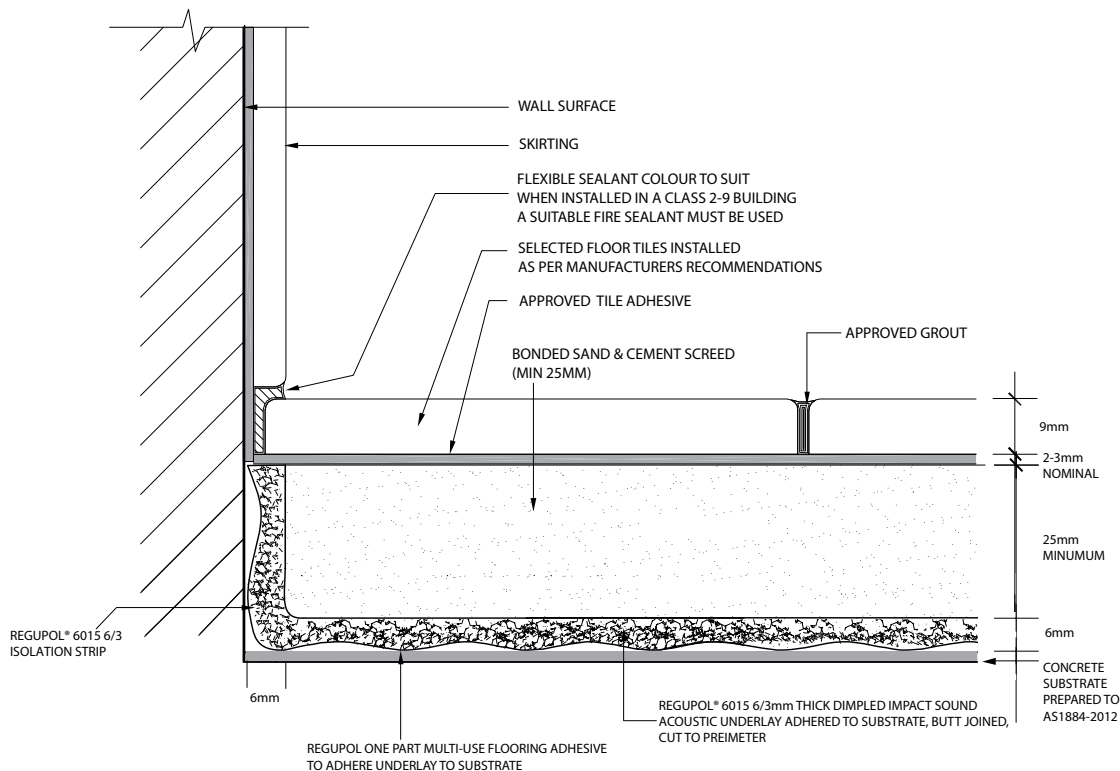
Regupol One Part Multi-Use Flooring Adhesive is a water based synthetic polymer, VOC compliant, multi-use flooring adhesive, with water resistant properties. This adhesive was specifically formulated to bond selected Regupol® products to most common interior sub-floors. The product is suitable for dry area installations only.



Regupol Primer 444 is a one part, solvent free, water based synthetic polymer resin formulated to be used on concrete substrates. Regupol Primer 444 is suitable for dry area installations only.



- 1 Approved Tile Grout
- 2 Selected Tile Floor Covering
- 3 Approved Tile Adhesive
- 4 Bonded Sand & Cement Screed (min 25mm)
- 5 Regupol® 6015 6/3mm Acoustic Underlay
- 6 Regupol One Part Multi-Use Flooring Adhesive
- 7 Concrete Substrate Prepared to AS1884-2012 with Regupol Primer 444



WET AREA BONDED SCREED & TILE

with Regupol® 6015 6/3mm

This system reflects a typical **residential** application with an approved Screed Bed. For all other applications please contact Regupol's Technical Division. Please note that the drawings are not to scale and are for illustration purposes only.



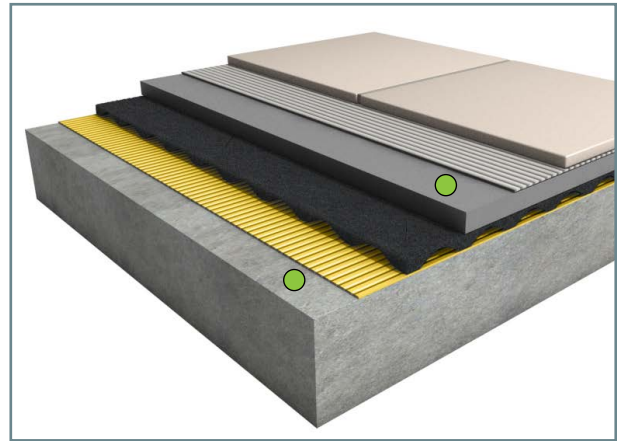
Adhesive and Sealer Information



Regupol One Part Polyurethane Adhesive is an elastomeric moisture cured, solvent free polyurethane adhesive. The adhesive is suitable for internal and external wet and dry areas.

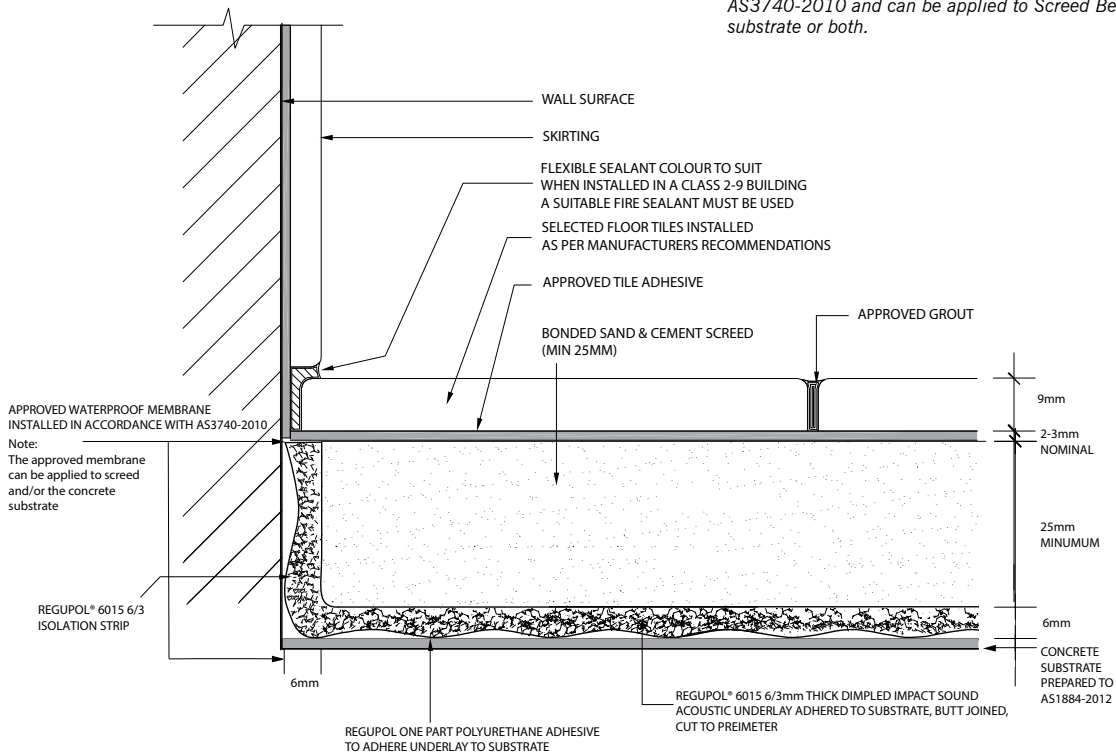


Regupol Two Part Water Based Epoxy Moisture Sealer is a high performance; water based two component epoxy moisture and vapour barrier formulated to prevent water seepage and permeation in building and construction substrates. Use when relative humidity exceeds the required levels.



- 1 Approved Tile Grout
- 2 Selected Tile Floor Covering
- 3 Approved Tile Adhesive
- 4 Bonded Sand & Cement Screed (min 25mm)
- 5 Regupol® 6015 6/3mm Acoustic Underlay
- 6 Regupol One Part Polyurethane Adhesive
- 7 Concrete Substrate Prepared to AS1884-2012

● Approved Waterproof Membrane installed in accordance with AS3740-2010 and can be applied to Screed Bed or concrete substrate or both.





SCREEDED TILE FLOORS

SOUNDPROOFING SCREEDED TILE FLOORS
WITH REGUPOL® 6010 8/4MM ACOUSTIC UNDERLAY



REGUPOL® 6010 8/4MM

Regupol® 6010 dimple is a soundproofing acoustic underlay manufactured from recycled SBR rubber, bound with polyurethane. The finished product is technically superior when it comes to installing a variety of approved floor finishes and bonded screed beds. The dimple profile allows for the impact sound generated to dissipate and effectively reduce.

Benefits include:

- German quality guaranteed
- Minimises construction heights
- Suitable for use with under floor heating
- Protects expansion joints
- PVC free
- Made from recycled materials
- Manufactured and certified to OHAS 18001:2007, DIN ISO 9001:2008, DIN ISO 14001:2004 Management Systems

Product Data - Rolls

Rolls 1.15m x 20lm
 Thickness 8mm dimpled profile 8/4mm



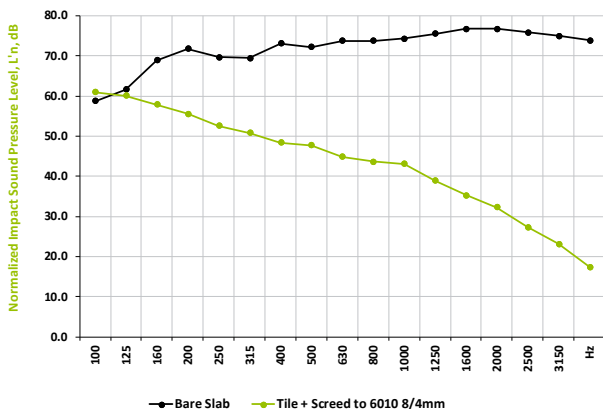
Typical application under bonded screed and tiles



Regupol® 6010 is manufactured using recycled SBR rubber

Tiles with Screed Normalized Impact Sound Pressure Levels

Tested at CSIRO Clayton, in accordance with ISO 140-8: 2006 (E), ISO 140-6-2006, AS ISO 717.2-2004, ASTM E989-89. Test area 10.8m²
 Results can vary when different floors are installed and/or if bonded.



REPORT RG096 - REGUPOL® 6010 8/4MM

Layer of 8mm Ceramic Tile; bonded to 30mm Screed Bed; to Regupol® 6010 8/4mm, to 150mm Concrete Slab (no ceiling).

Ln,w 50 dB	Improvement ΔLw 26dB	IIC 59	Complies with BCA Part F5.3 Impact Sound
------------	----------------------	--------	--

DRY AREA BONDED SCREED & TILE

with Regupol® 6010 8/4mm

This system reflects a typical **residential** application with approved screed beds. For all other applications please contact Regupol's Technical Division. Please note that drawings are not to scale and are for illustration purposes only.



Adhesive Information



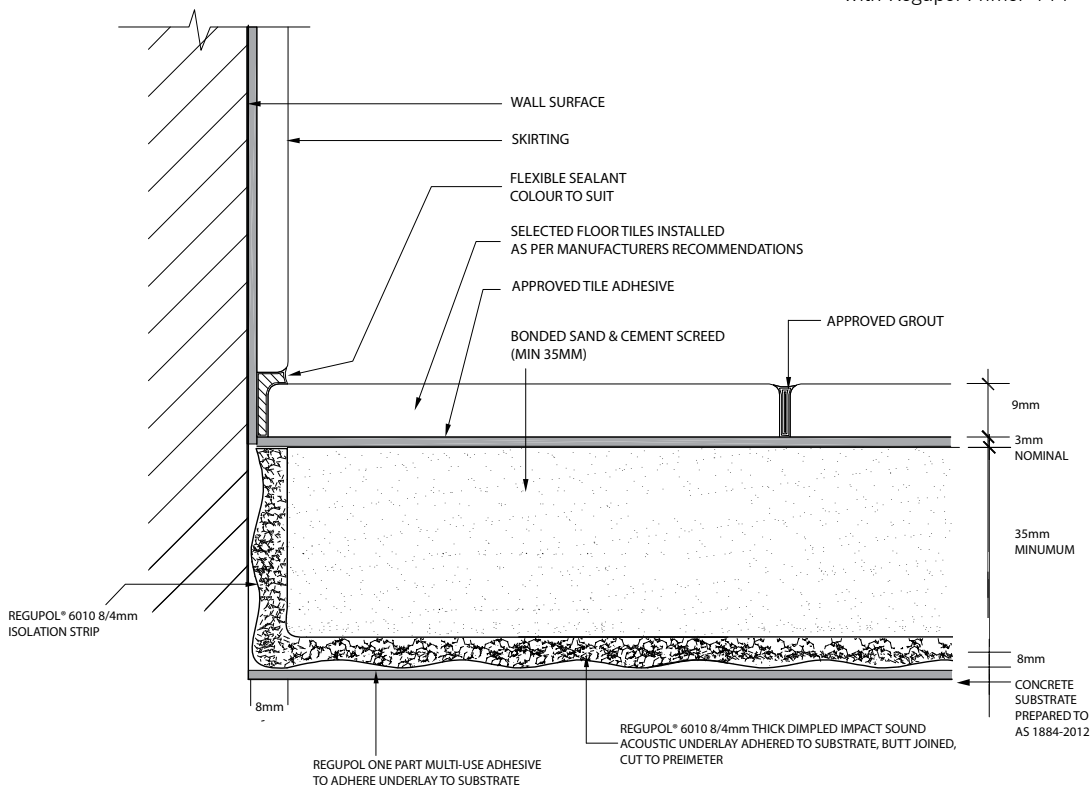
Regupol One Part Multi-Use Flooring Adhesive is a water based synthetic polymer, VOC compliant, multi-use flooring adhesive, with water resistant properties. This adhesive was specifically formulated to bond selected Regupol® products to most common interior sub-floors. The product is suitable for dry area installations only.



Regupol Primer 444 is a one part, solvent free, water based synthetic polymer resin formulated to be used on concrete substrates. Regupol Primer 444 is suitable for dry area installations only.



- 1 Approved Tile Grout
- 2 Selected Tile Floor Covering
- 3 Approved Tile Adhesive
- 4 Bonded Sand & Cement Screed (min 35mm)
- 5 Regupol® 6010 8/4mm Acoustic Underlay
- 6 Regupol One Part Multi-Use Flooring Adhesive
- 7 Concrete Substrate Prepared to AS1884-2012 with Regupol Primer 444



WET AREA BONDED SCREED & TILE

with Regupol® 6010 8/4mm

This system reflects a typical **residential** application with an approved Screed Bed. For all other applications please contact Regupol's Technical Division. Please note that the drawings are not to scale and are for illustration purposes only.



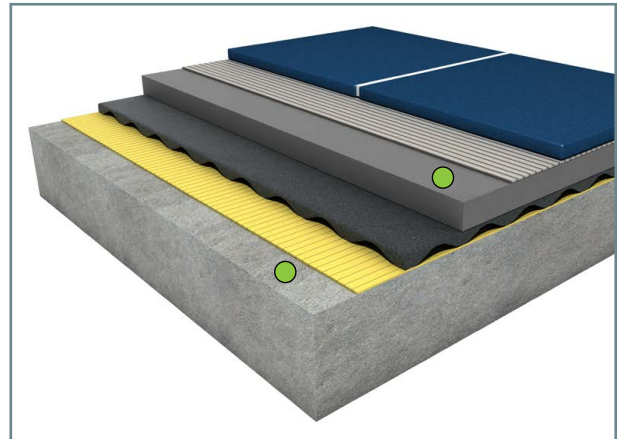
Adhesive and Sealer Information



Regupol One Part Polyurethane Adhesive is an elastomeric moisture cured, solvent free polyurethane adhesive. The adhesive is suitable for internal and external wet and dry areas.

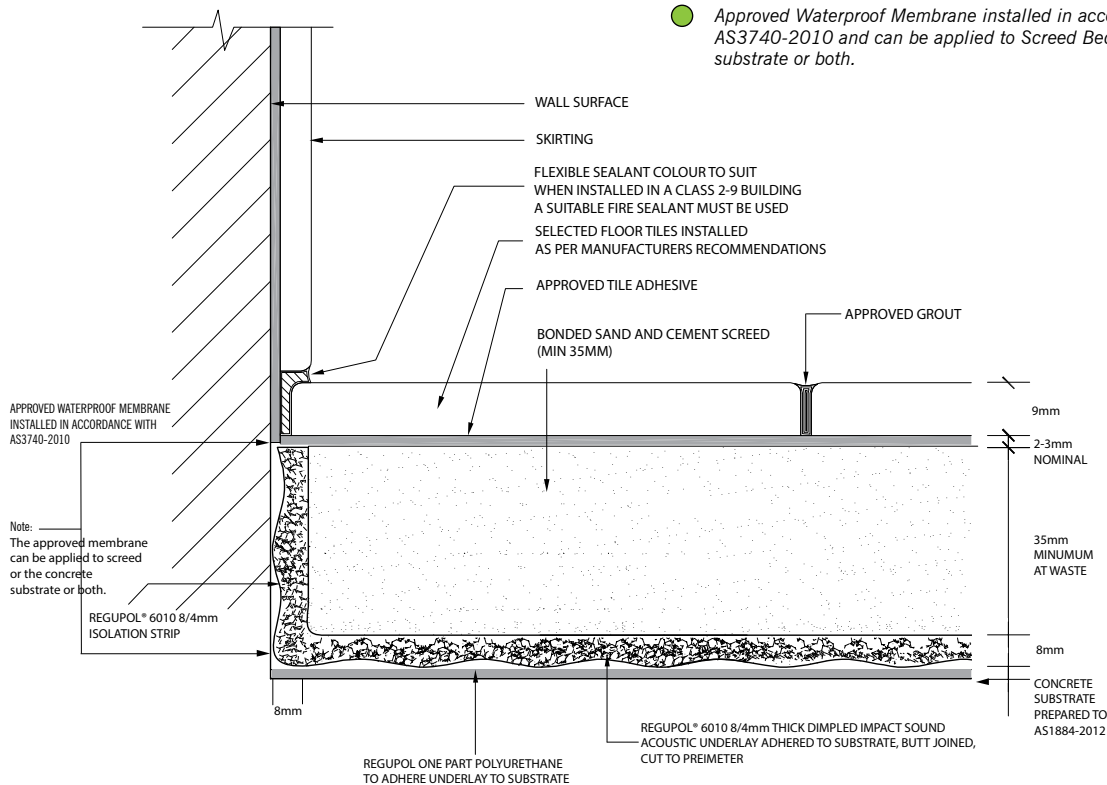


Regupol Two Part Water Based Epoxy Moisture Sealer is a high performance; water based two component epoxy moisture and vapour barrier formulated to prevent water seepage and permeation in building and construction substrates. Use when relative humidity exceeds the required levels.



- 1 Approved Tile Grout
- 2 Selected Tile Floor Covering
- 3 Approved Tile Adhesive
- 4 Bonded Sand & Cement Screed (min 35mm)
- 5 Regupol® 6010 8/4mm Acoustic Underlay
- 6 Regupol One Part Polyurethane Adhesive
- 7 Concrete Substrate Prepared to AS1884-2012

● Approved Waterproof Membrane installed in accordance with AS3740-2010 and can be applied to Screed Bed or concrete substrate or both.





SCREEDED TILE FLOORS

SOUNDPROOFING SCREEDED TILE FLOORS
WITH REGUPOL® 6010 10MM ACOUSTIC UNDERLAY



REGUPOL® 6010 10MM

Regupol® 6010 is a soundproofing acoustic underlay manufactured from recycled SBR rubber, bound with polyurethane. **Regupol® 6010** is a soundproofing acoustic underlay designed to isolate approved finishes from the main structure of the building, reducing impact energy generated by general footfall.

Benefits include:

- German quality guaranteed Minimises construction heights
- Suitable for use with under floor heating
- Protects expansion joints
- PVC free
- Made from recycled materials
- Manufactured and certified to OHAS 18001:2007, DIN ISO 9001:2008, DIN ISO 14001:2004 Management Systems

Product Data - Rolls

Rolls 1.25m x 20lm
 Thickness 10mm



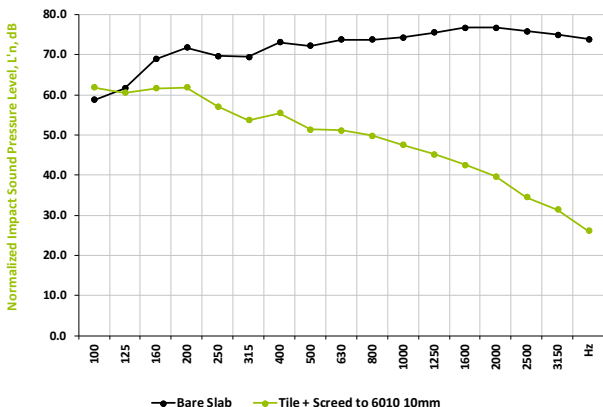
Typical application under bonded screed and tiled floors



Regupol® 6010 is manufactured using recycled SBR rubber

Tiles with Screed Normalized Impact Sound Pressure Levels

Tested at CSIRO Clayton, in accordance with ISO 140-8: 2006 (E), ISO 140-6-2006, AS ISO 717.2-2004, ASTM E989-89. Test area 10.8m². Results can vary when different floors are installed and/or if bonded.



REPORT RG097 - REGUPOL® 6010 10MM			
Layer of 8mm Ceramic Tile, bonded to 30mm Screed Bed, to Regupol® 6010 10mm, to 150mm Concrete Slab (no ceiling).			
Ln,w 53 dB	Improvement ΔLw 23dB	IIC 57	Complies with BCA Part F5.3 Impact Sound

DRY AREA BONDED SCREED & TILE

with Regupol® 6010 10mm

This system reflects a typical **residential** application with approved screed beds. For all other applications please contact Regupol's Technical Division. Please note that drawings are not to scale and are for illustration purposes only.



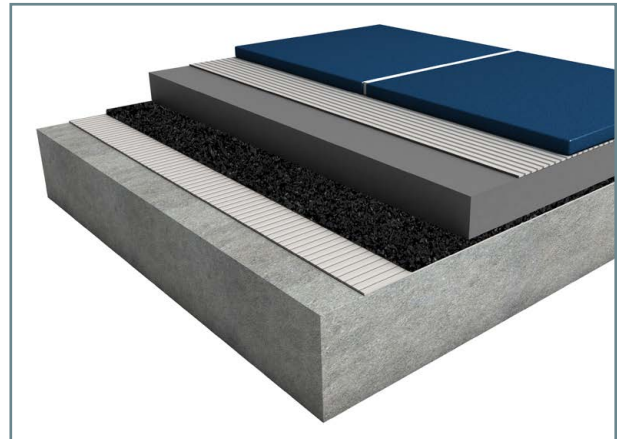
Adhesive Information



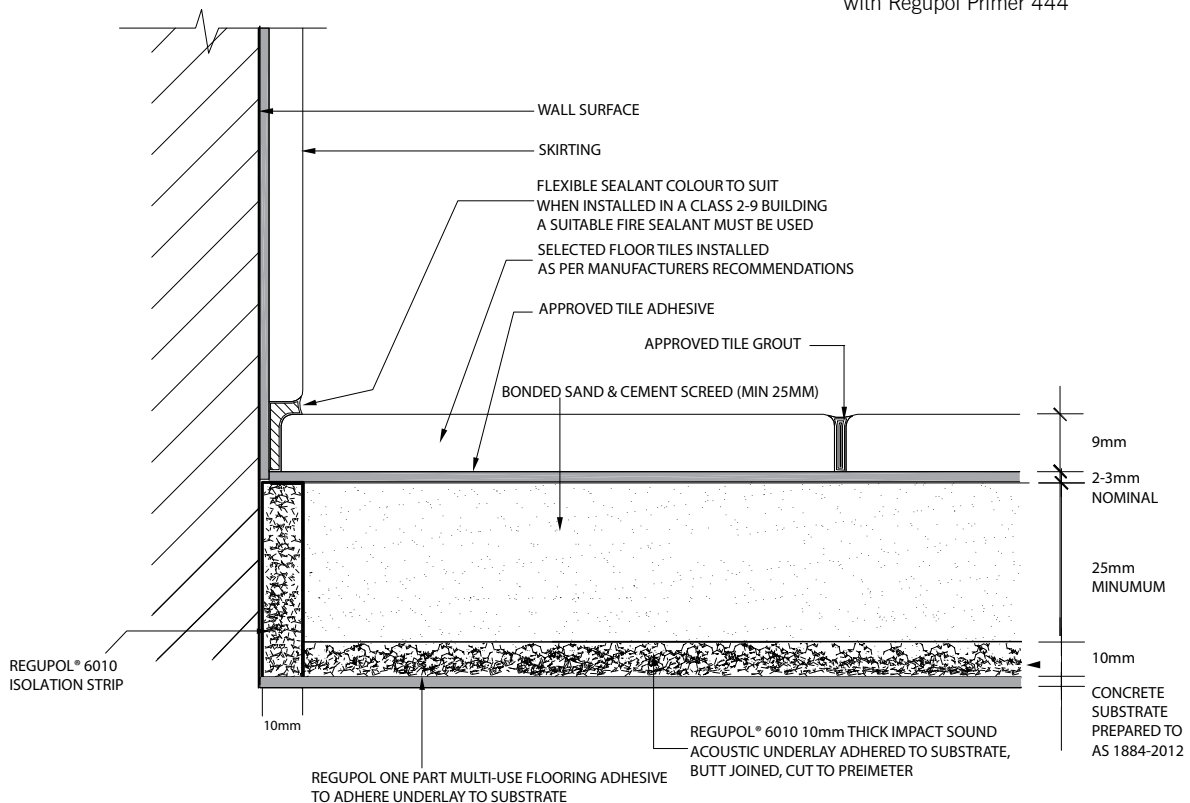
Regupol One Part Multi-Use Flooring Adhesive is a water based synthetic polymer, VOC compliant, multi-use flooring adhesive, with water resistant properties. This adhesive was specifically formulated to bond selected Regupol® products to most common interior sub-floors. The product is suitable for dry area installations only.



Regupol Primer 444 is a one part, solvent free, water based synthetic polymer resin formulated to be used on concrete substrates. Regupol Primer 444 is suitable for dry area installations only.



- 1 Approved Tile Grout
- 2 Selected Tile Floor Covering
- 3 Approved Tile Adhesive
- 4 Bonded Sand & Cement Screed (min 25mm)
- 5 Regupol® 6010 10mm Acoustic Underlay
- 6 Regupol One Part Multi-Use Flooring Adhesive
- 7 Concrete Substrate Prepared to AS1884-2012 with Regupol Primer 444



WET AREA BONDED SCREED & TILE

with Regupol® 6010 10mm

This system reflects a typical **residential** application with an approved Screed Bed. For all other applications please contact Regupol's Technical Division. Please note that the drawings are not to scale and are for illustration purposes only.

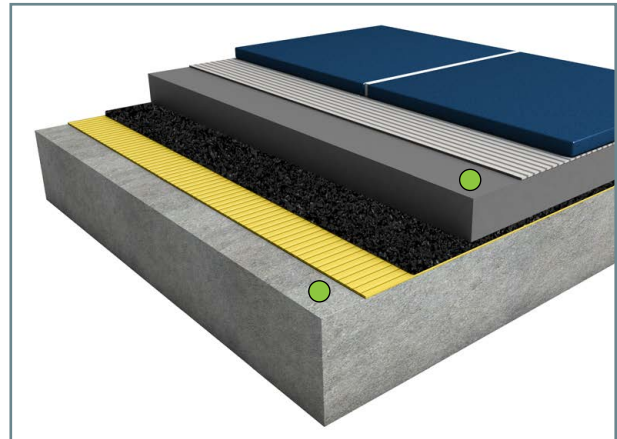
Adhesive and Sealer Information



Regupol One Part Polyurethane Adhesive is an elastomeric moisture cured, solvent free polyurethane adhesive. The adhesive is suitable for internal and external wet and dry areas.

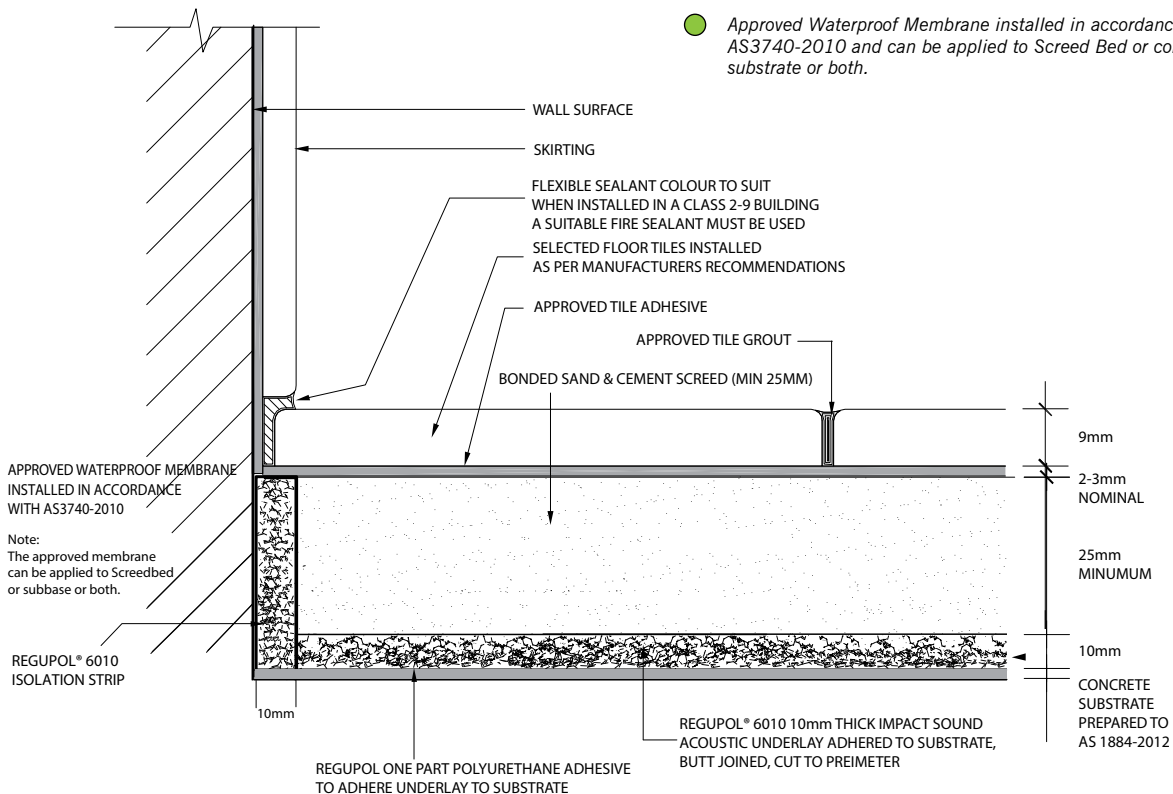


Regupol Two Part Water Based Epoxy Moisture Sealer is a high performance; water based two component epoxy moisture and vapour barrier formulated to prevent water seepage and permeation in building and construction substrates. Use when relative humidity exceeds the required levels.



- 1 Approved Tile Grout
- 2 Selected Tile Floor Covering
- 3 Approved Tile Adhesive
- 4 Bonded Sand & Cement Screed (min 25mm)
- 5 Regupol® 6010 10mm Acoustic Underlay
- 6 Regupol One Part Polyurethane Adhesive
- 7 Concrete Substrate Prepared to AS1884-2012

● Approved Waterproof Membrane installed in accordance with AS3740-2010 and can be applied to Screed Bed or concrete substrate or both.



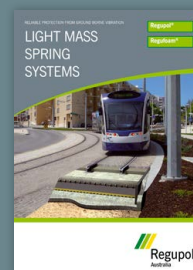
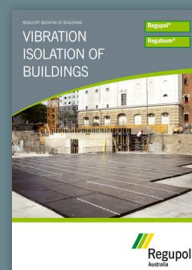
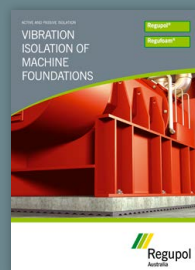
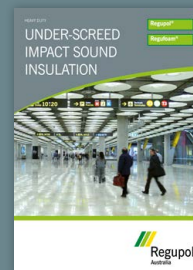
**REGUPOL AUSTRALIA
HEAD OFFICE & WAREHOUSE**
155 Smeaton Grange Road
SMEATON GRANGE NSW 2567
Australia

Tel. +61 2 4624 0050
Fax +61 2 4647 4403
sales@regupol.com.au
www.regupol.com.au

**REGUPOL AUSTRALIA
GOLD COAST WAREHOUSE**
Unit 3, 14 Hopper Avenue
ORMEAU QLD 4208
Australia

Tel. 1800 418 909

Download or request additional information about the Regupol family of
Vibration Isolation and Impact Sound Proofing products at www.regupol.com.au



DISCLAIMER

Information contained within this brochure is given in good faith as a suggested guide in specifying Regupol® Impact Sound Acoustic Underlays, no guarantee or warranty is expressed or implied. Any circumstances not covered by this guide should be referred to Regupol (Australia) Pty Limited or its Distributors for any particular attention required. No liability is accepted by Regupol (Australia) Pty Limited, our employees, distributors, representatives or agents, for any loss or damage, direct or indirect, that may result from using the information and/or suggestions as actual conditions for use that are beyond our control. All materials should be checked/tested for their suitability to the prevailing site conditions.