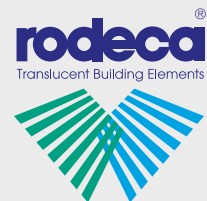


# PRODUCT GUIDE



## About Rodeca

Rodeca was founded in 1971 and is a medium-sized company with more than 45 years of experience in production, development and sales of translucent products for façades and roofs made of high quality polycarbonate.

Our qualified sales and technical staff based in Muelheim an der Ruhr provides support from design stage to project completion. Our sales offices in Europe plus a well-developed international sales network enables us to provide customer-related project assistance worldwide.

We supply products to our customers with our own lorries, forwarding agents and for collection at our premises. The products are produced in Muelheim an der Ruhr, located in the heart of the Ruhr area and then packaged and prepared for dispatch respectively for collection. Short lines of communication and qualified staff help with words and deeds.

Rodeca offers a unique and broad range of products in terms of colours and systems for varying applications. Our production facility in Muelheim an der Ruhr runs around the clock, manufacturing customer specific orders worldwide. The production facility in Kamp Lintfort fabricates the Rodeca window series designed for integration into Rodeca façade and roof systems. We always guarantee best quality "made in Germany".

### What are your advantages?

- Customer focused service, individual advice and professional technical support
- Light weight materials provide cost savings in installation and transportation
- Long lasting, translucent systems with outstanding properties
- Choose from a wide range of colours
- Polycarbonate is recyclable and thus very eco-friendly
- We are a reliable and professional business partner at your side

Our mission is to assist our customers in their daily work with our creativity, competence and innovation. Amongst those are architects, designers, contractors for industrial, façade and glass construction as well as trading companies for building plastics, roofing and construction materials.

Thanks to creative architecture, buildings old and new can be designed to provide visually exciting and energy efficient solutions. Our goal is to bring new ideas and innovation to the markets. With us you have a reliable, professional and creative business partner aside providing you cost effective solutions. Rodeca has a share every day in fulfilling customer demands and to bring more daylight through facade and roofs into the world.

# Content

1

## Translucent Building Elements for vertical / pitched glazing

- 1.1. Translucent Building Elements (LBE) production program 4
- 1.2. Fixing 5
- 1.3. Framing systems and installation 6

2

## Windows for LBE facade constructions

- 2.1. General information and production program 7

3

## Multi Function Panels (MFP) for roofing constructions

- 3.1. Multi Function Panels production program 9
- 3.2. Roofing systems - MFP in 250 mm building width 10
- 3.3. Roofing systems - MFP in 600 mm building width 11

4

## U-Panels for roofing constructions

- 4.1. U-Panels production program and accessories 12
- 4.2. Roofing system example PC 2600-40-7-U 13

5

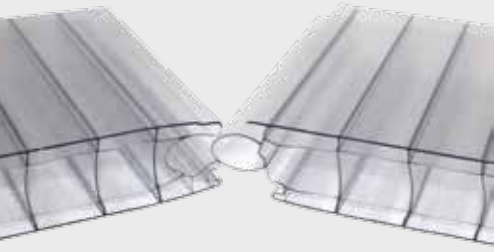
## RT-Thermolight - Light panels for sandwich panel constructions

- 5.1. Production program RT-Thermolight light panels 14
- 5.2. PC 2685-3 for integration in sandwich panel roofings 15
- 5.3. PC 21000-30-XL with two side laps for high corrugations 16
- 5.4. PLP 1000-30 with side lap and full PC high corrugation 17

6

## Multi Wall Sheets (MWS) up to 40 mm thickness

- 6.1. Multi Wall Sheets production program 18
- 6.2. MWS accessories 20
- 6.3. Special MWS accessories - Rodeca Creativity 22



## Applications

- glazings
- sports and industrial halls
- roofing construction
- northern lights
- window glazing
- interior applications, e. g. partition walls or exhibition stand constructions
- refurbishments for wall and roof
- rain screens
- curtain façades

## Production program/ available thicknesses

30	Panel	Up value <sup>1</sup> W/m <sup>2</sup> K	Building width <sup>2</sup>	Fire rating
	2333-30-6	1.3 - 1.4	333 mm	B - s1, d0

### PC 2333-30-6

Colours  
standard: crystal / opal



Color<sup>3</sup> version from 300 m<sup>2</sup>

40	Panel	Up value <sup>1</sup> W/m <sup>2</sup> K	Building width <sup>2</sup>	Fire rating
	2540-4	1.3 - 1.5	500 mm	B - s1, d0
	2540-4 MC	1.3 - 1.6	500 mm	B - s1, d0
	2540-6	1.1 - 1.2	500 mm	B - s1, d0
	2540-7	1.0 - 1.1	500 mm	B - s1, d0
	2540-10	1.0	500 mm	B - s1, d0
2540-10-DX	1.1	495 mm	B - s1, d0	

### e.g. PC 2540-4 MC

Colours  
standard: crystal / opal

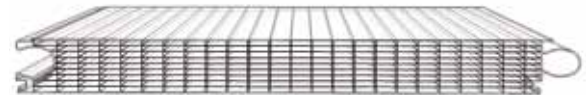


Color<sup>3</sup> version from 300 m<sup>2</sup>

50	Panel	Up value <sup>1</sup> W/m <sup>2</sup> K	Building width <sup>2</sup>	Fire rating
	2550-10	0.80 - 0.92	495 mm	B - s1, d0

### PC 2550-10

Colours  
Standard: crystal / opal / Color

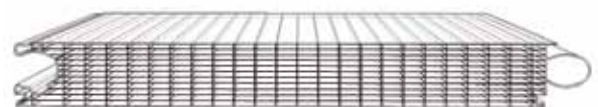


DuoColor version from 300 m<sup>2</sup>  
Color<sup>3</sup> version from 300 m<sup>2</sup>

60	Panel	Up value <sup>1</sup> W/m <sup>2</sup> K	Building width <sup>2</sup>	Fire rating
	2560-12	0.71 - 0.77	500 mm	B - s1, d0

### PC 2560-12

Colours  
Standard: crystal / opal

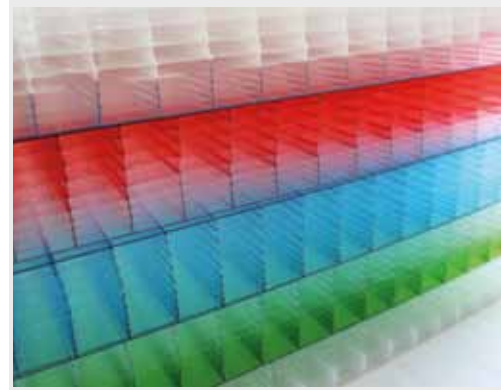


DuoColor version from 300 m<sup>2</sup>  
Color<sup>3</sup> version from 300 m<sup>2</sup>

<sup>1</sup> Depending on horizontal or vertical installation as interior or exterior application according to DIN EN ISO 6946:2008 / DIN EN ISO 10077-2:2008

<sup>2</sup> Width tolerance of - 2 / + 6 mm, for tolerances see our general information

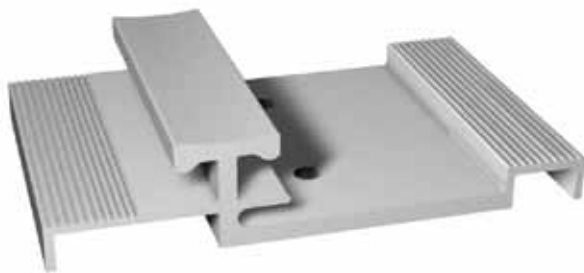
<sup>3</sup> For minimum quantities, colour combinations and versions see our technical manuals



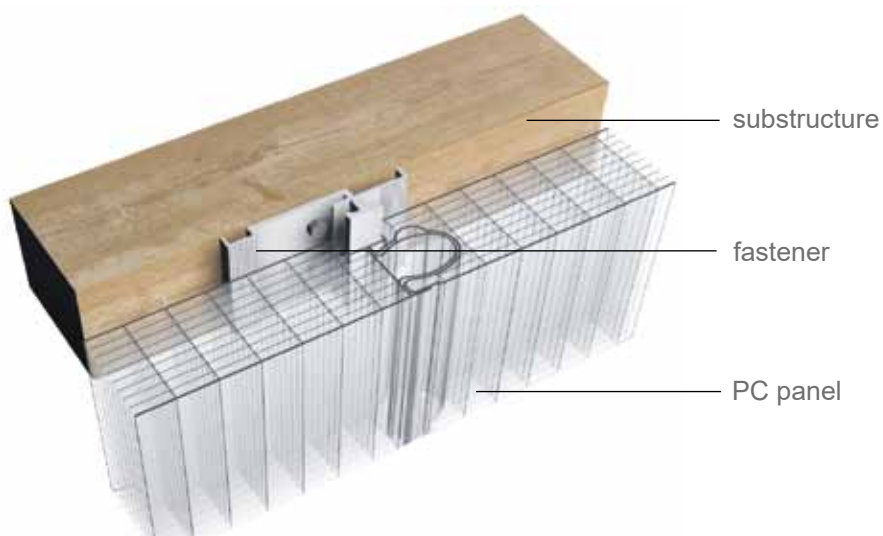
## Fixing of tongue and groove panels

The fasteners slide into the panel groove and are fixed at the substructure. The fasteners provide a continuous and seamless glazing, which gives a light and smooth appearance to the façade.

## Example of fastener



## Flat fastener fixing on substructure provided from client



## Advantages

- Polycarbonate is a crystal clear, high impact thermoplastic
- Temperature resistance from -40 to +115°C, temporarily up to 130°C
- Impact resistance virtually unchanged within these temperatures
- Good long term performance through UV protection
- 10 years warranty
- Translucent with excellent thermal properties

## Translucent Building Elements



## Framing systems and installation

Our framing systems for panel mounting are available in thermally broken and non-thermally broken versions. The examples below show the use of Rodeca framing systems for installation in reveal, as rainscreen and as pitched rainscreen construction.

### Installation in reveal



### rainscreen



### pitched rainscreen



## Prefabricated 90° corners for framing systems

We offer prefabricated 90° corners. The corners are made of 0.55 m long frame profiles, including front plates. Prefabricated 90° corners are available for all framing systems in 40, 50 and 60 mm thickness.

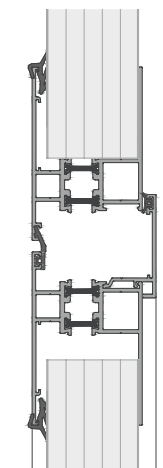
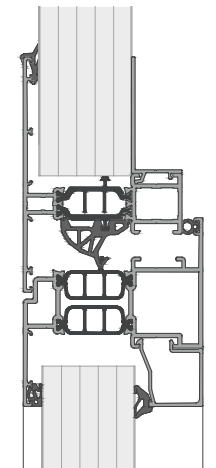
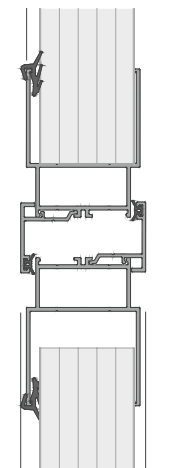




Windows

## General information windows

Rodeca windows are designed to integrate with Rodeca facades. Rodeca windows can be glazed with our polycarbonate panels or with insulating glass. Divided into three different product series we can cover all demands from sashes to skylights. For more detailed information about our window series check our technical manual.



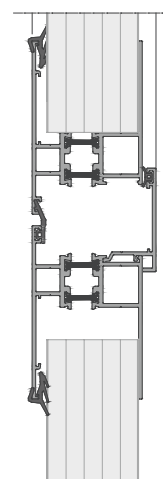
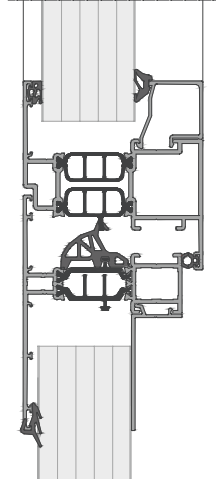
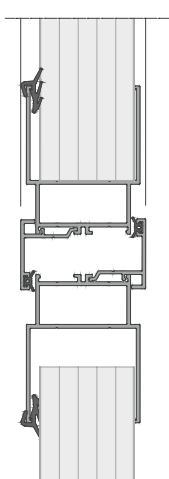
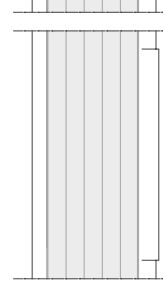
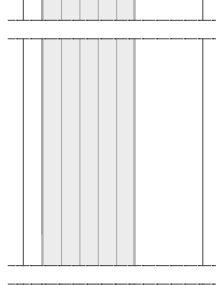
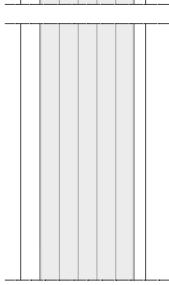
Series 80



Series 85



Series 86



System section  
Series 80

System section  
example Series 85

System section  
Series 86



## Production program windows

### Series 80

Non-thermally broken aluminium window. Glazing is possible with 40 mm panels respectively with insulating glass up to 20 mm



top hung window  
outwards opening



horizontally pivoted  
sash window



special pivot-tilt  
window



special top hung  
window



fixed glazing element



combination element  
vertical / horizontal



rooflight top hung window

### Series 85

Thermally broken aluminium window system. Glazing is possible with 40 / 50 / 60 mm panels depending on the type of opening respectively with insulating glass up to 48 mm



tilt window  
inwards opening



top hung window  
outwards opening



tilt and turn window



horizontally pivoted  
sash window



fixed glazing element



combination element  
vertical / horizontal



rooflight top hung window

### Series 86

Thermally broken aluminium window system. Glazing is possible with 40 / 50 / 60 mm panels



horizontally pivoted  
sash window



special pivot-tilt  
window

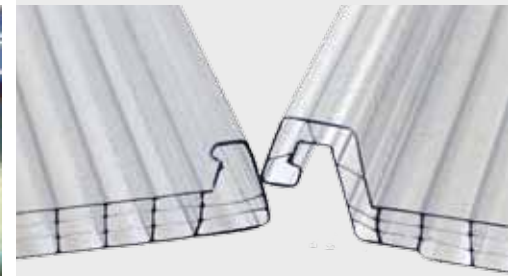


special top hung  
window



combination element  
vertical / horizontal





## Multi Function Panels

### Multi Function Panels

Multi Function Panels are suitable for transparent roofing of buildings and open spaces and allow creative freedom due to their flexible lengths and possible radii. The 600 mm wide transparent systems are suitable for both, curved and straight applications, and find their wide range of use in roofs, rooflight strips and large-scale hall coverings. The slim widths of 250 mm are particularly suitable for smaller roofs such as in DIY projects.

Light weight, high insulation and high impact properties provide an extremely weather resistant roofing solution. The absence of glazing bars and minimal use of alloy components creates an almost seam free, economical interior finish.

### Production program

Panel	Thickness	Building width <sup>1</sup>	Up-value <sup>2</sup> W/m <sup>2</sup> K	Fire rating
PC 2253-2	3 mm	250 mm	approx. 4.5	B - s1, d0
PC 2250-10-4	10 mm	250 mm	approx. 2.5	B - s1, d0
PC 2610-4	10 mm	600 mm	approx. 2.7	B - s1, d0
PC 2625-5	25 mm	600 mm	approx. 1.6	B - s1, d0

### Cold bending

Multi Function Panels can be cold-curved over an appropriate substructure. The minimum radius depends on the panel thickness.

PC 2253-2	min. radius 2.00 m
PC 2250-10-4	min. radius 3.00 m
PC 2610-4	min. radius 3.00 m
PC 2625-5	min. radius 8.00 m



### Advantages

- quick and easy to mount
- light weight products
- integrated coupling/connection
- minimized cold bridges
- heat insulating
- good long term performance through UV protection
- 200 x tougher than glass
- polycarbonate doesn't splinter

### Applications

- roofing construction
- sports and industrial halls
- canopies
- roof lights - flat and curved
- pyramids
- natural smoke and heat exhaust
- carports
- patio coverings

<sup>1</sup> Width tolerance of - 2 / + 6 mm

<sup>2</sup> Reference value



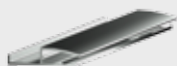
Multi Function Panels



### Accessories PC 2253-2



fastener



PC lateral end profile



PC end cap silver



sealing tape



filling piece

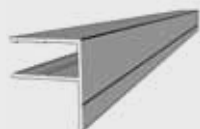
### Accessories PC 2250-10-4



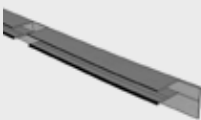
fastener



PC end cap



lateral end profile



end profile



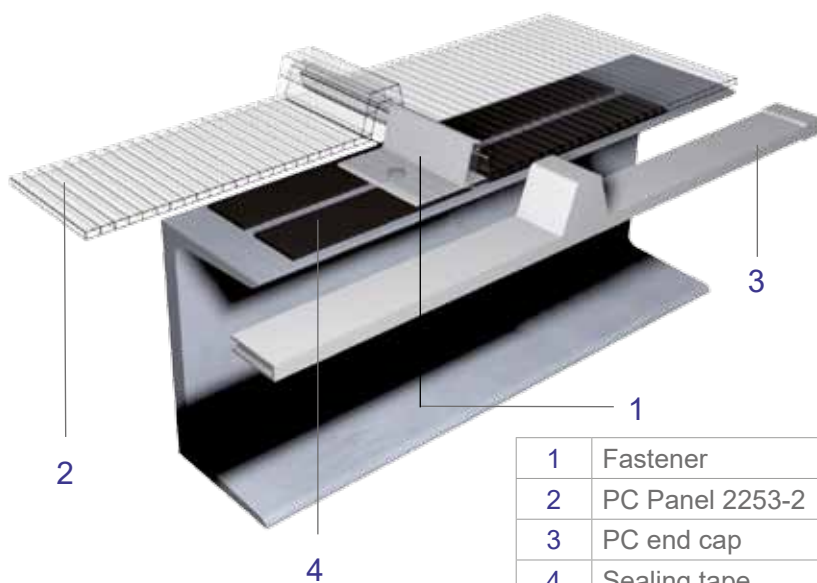
sealing tape



filling piece

### System example PC 2253-2

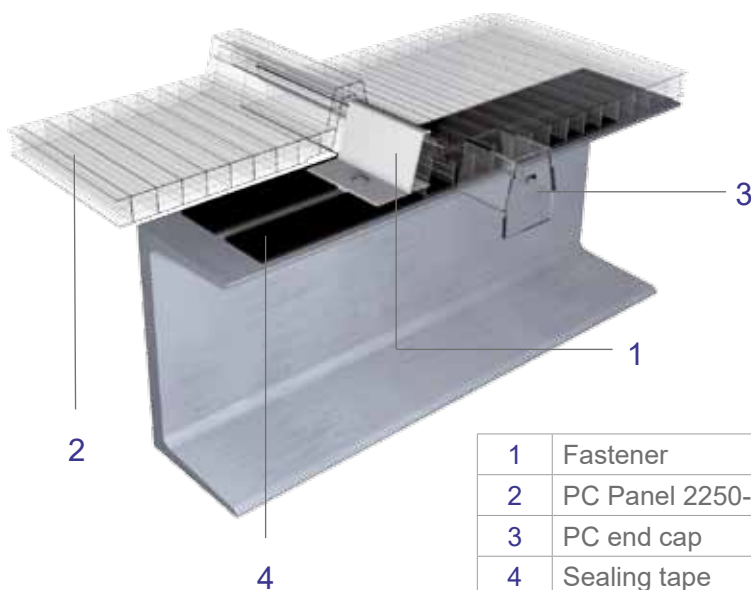
The Multi Function Panel PC 2253-2 is a 3 mm thick panel with two layers and a building width of 250 mm.



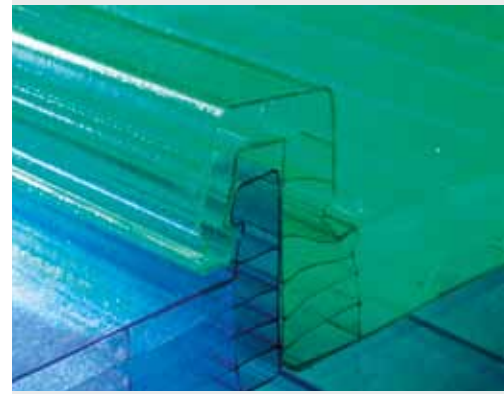
1	Fastener
2	PC Panel 2253-2
3	PC end cap
4	Sealing tape

### System example PC 2250-10-4

The Multi Function Panel PC 2250-10-4 is a 10 mm thick panel with 4 layers and a building width of 250 mm.

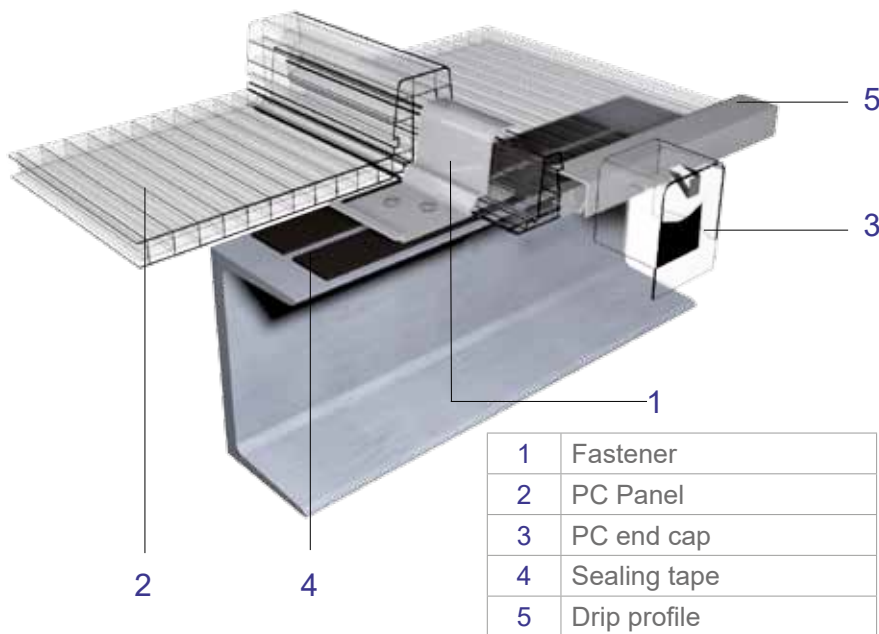


1	Fastener
2	PC Panel 2250-10-4
3	PC end cap
4	Sealing tape



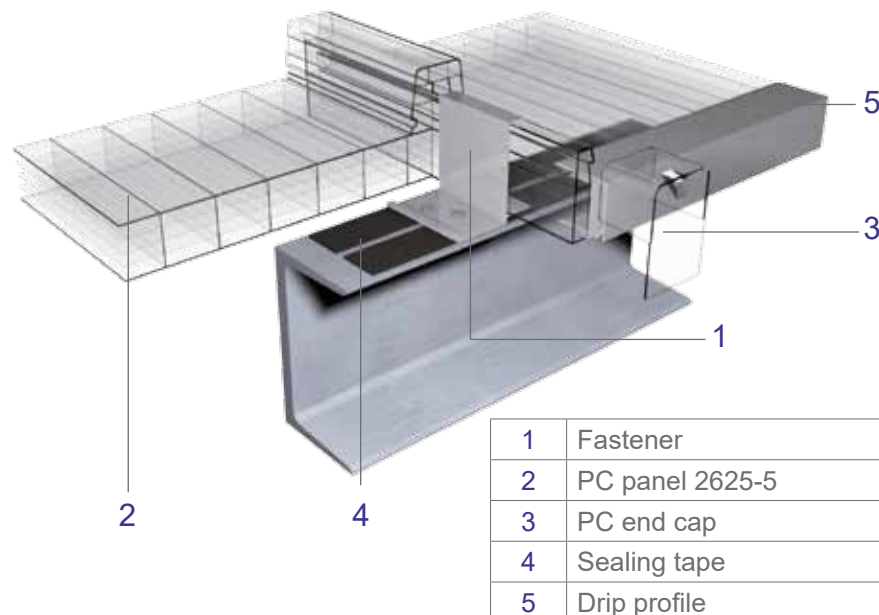
## System example PC 2610-4

The Multi Function Panel PC 2610-4 is a 10 mm thick panel with 4 layers and a building width of 600 mm.



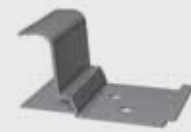
## System example PC 2625-5

The Multi Function Panel PC 2625-5 is a 25 mm thick panel with 5 layers and a building width of 600 mm.



Installation advice, application requirements and further technical information can be found in our technical manuals and installation manuals.

## Accessories



fastener



PC end cap



end profile with clamp batten



gasket



cover plate



drip profile



retention washer

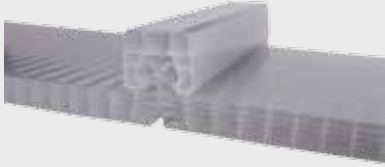


sealing tape



filling piece

## U-Panels



## Accessories



PC glazing bar for all U-Panels



PC end cap for all U-Panels



fastener for PC 2600-10-4-U



fastener for  
PC 2630-16-6-U  
PC 2630-20-6-U  
PC 2630-25-6-U



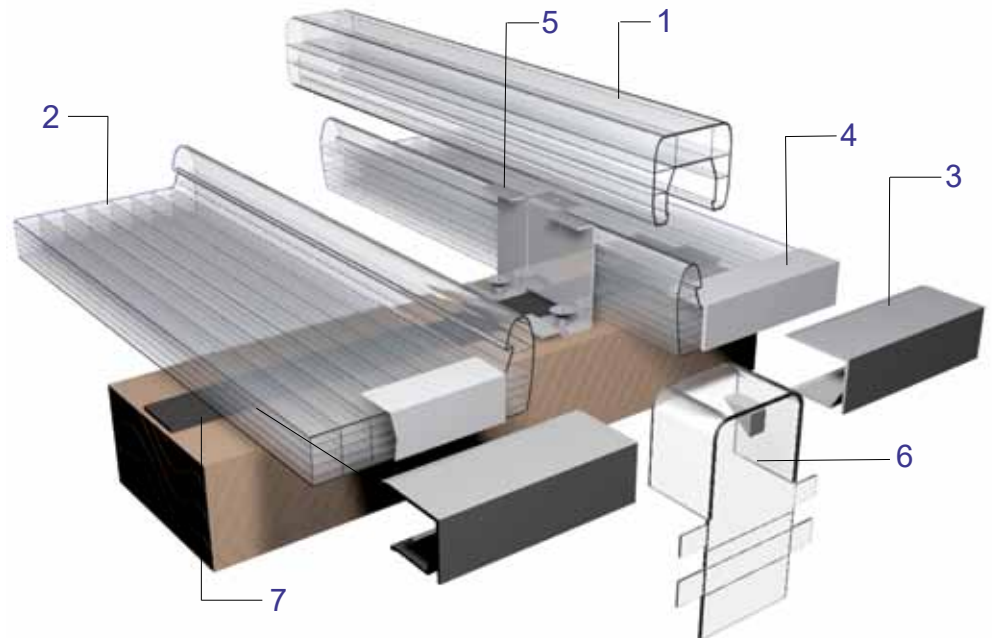
fastener for PC 2600-40-7-U

## U-Panels production program and accessories

Panel	Thickness	Building width <sup>1</sup>	Up value <sup>2</sup> W/m <sup>2</sup> K	Fire rating
PC 2600-10-4-U	10 mm	600 mm	approx. 2.6	B - s1, d0
PC 2630-16-6-U	16 mm	630 mm	approx. 1.9	B - s1, d0
PC 2630-20-6-U	20 mm	630 mm	approx. 1.7	B - s1, d0
PC 2630-25-6-U	25 mm	630 mm	approx. 1.6	B - s1, d0
PC 2600-40-7-U	40 mm	605 mm	approx. 1.1	B - s1, d0

Standard colours: crystal / opal; please inquire other versions / colours

## Overview systems PC 2630-16-6-U / PC 2630-20-6-U



1	PC glazing bar
2	U-Panel PC 2630-16-6-U / PC 2630-20-6-U
3	Aluminium drip profile
4	Sealing panel end
5	Stainless steel fastener
6	PC end cap
7	Sealing tape

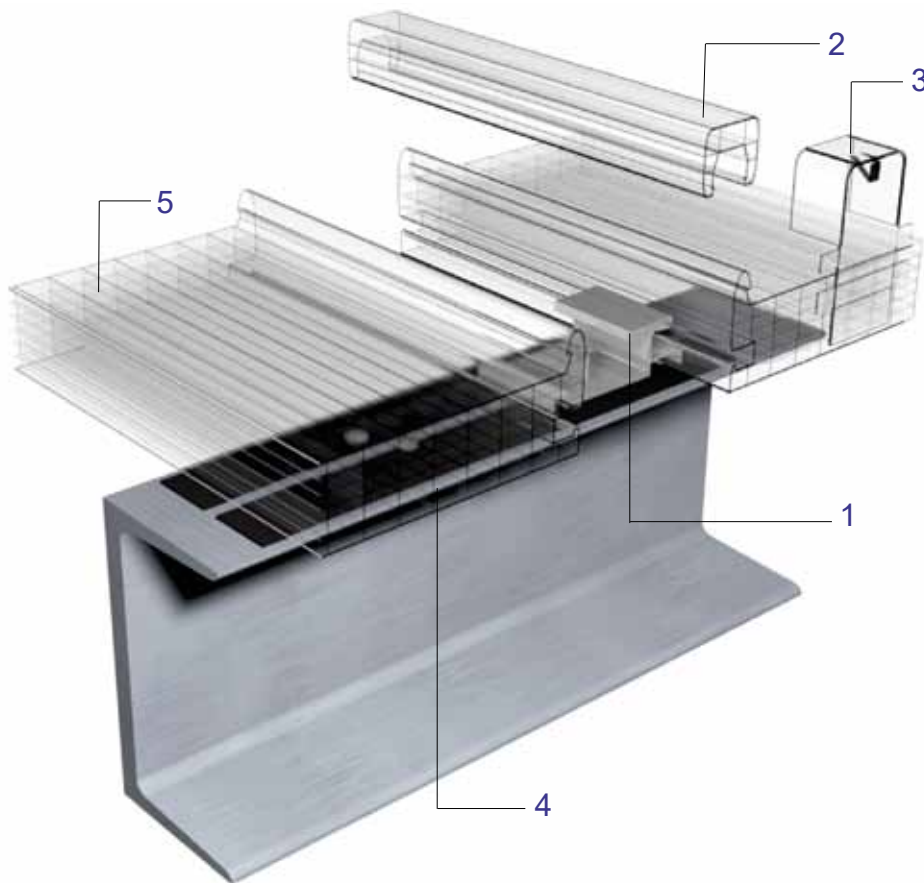
<sup>1</sup> Width tolerance of - 2 / + 6 mm

<sup>2</sup> Reference value



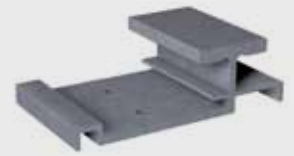
## Roofing system example PC 2600-40-7-U

This is the only panel fixed with flat fastener which allows large free spans and avoids thermal bridges. For pitched mounting a minimum slope of 5° needs to be considered. For curved panels a minimum radius of 10 m is required.



1	Fastener
2	PC glazing bar
3	PC end cap
4	Sealing tape
5	PC panel 2600-40-7-U

## Accessories



fastener



PC glazing bar

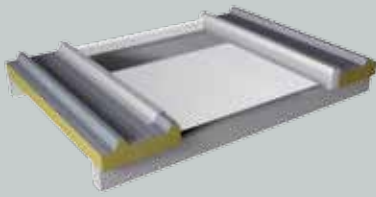


PC end cap



sealing tape

## RT-Thermolight

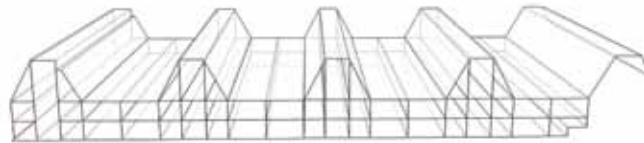


### Advantages

- easy and quick installation
- translucent
- heat insulating
- good temperature resistance
- does not splinter
- easy integration into roofing constructions with profiled sheeting or profiled sandwich panel constructions

### Production program

#### PC 2685-3



Thickness	Cover width <sup>1</sup>	Up-value <sup>2</sup> W/m <sup>2</sup> K	Fire rating
40/85 mm	600 mm	approx. 1.6	B - s1, do

Crystal from 600 m<sup>2</sup>

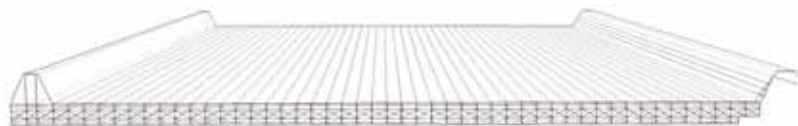
#### PC 21000-30-XL



Thickness	Cover width <sup>1</sup>	Up value <sup>2</sup> W/m <sup>2</sup> K	Fire rating
30 mm	1005 mm	approx. 1.4	B - s1, d0

Colour light opal from 900 linear metres

#### PLP 1000-30 / PLP 1000-40



Thickness	Cover width <sup>1</sup>	Up value <sup>2</sup> W/m <sup>2</sup> K	Fire rating
30 mm	1000 mm	approx. 1.3	B - s1, d0
40 mm	1000 mm	approx. 1.1	B - s1, d0

Colour light opal from 900 linear metres

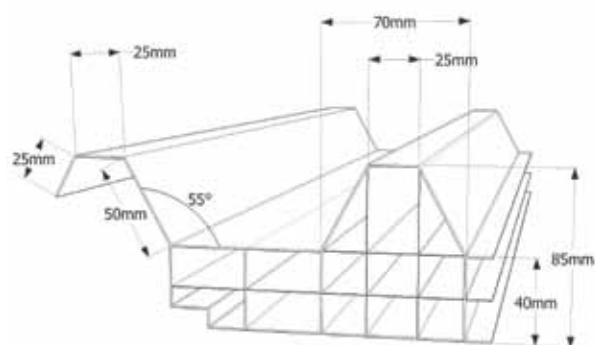
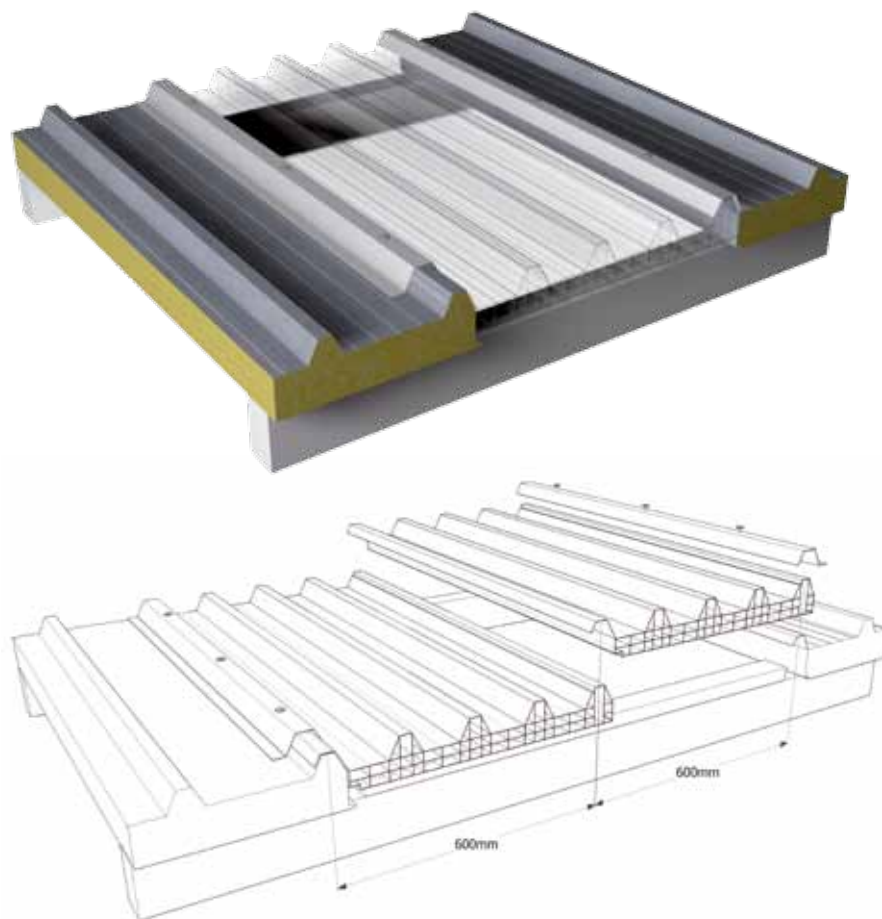
<sup>1</sup> Width tolerance of - 2 / + 6 mm

<sup>2</sup> Guide value



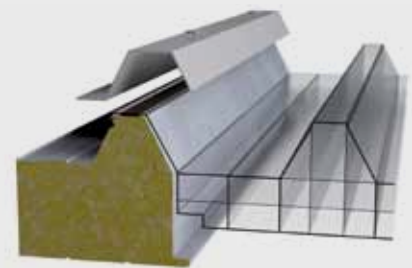
## PC 2685-3

Our polycarbonate panel 2685-3 has a thickness of 40 mm and a cover width of 600 mm. The panel height with corrugation is 85 mm. The panels can be interlocked to accommodate different openings. We recommend to fix the panel with flashings (provided by installer) on top of the high corrugation together with the side lap of polycarbonate panel.



Installation advice, application requirements and further technical information can be found in our technical manuals and installation manuals.

## Accessories



recommended fixing with flashing (provided by installer) on top of the high corrugation and PC panel

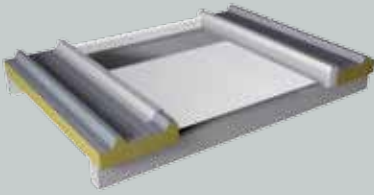


alternate fixing retention washer

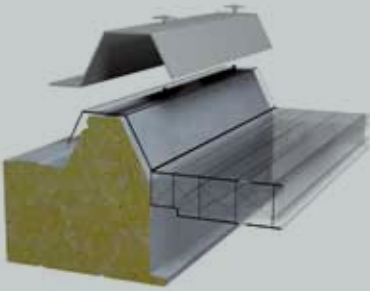


sealing tape

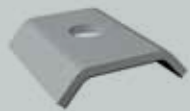
## RT-Thermolight



## Accessories



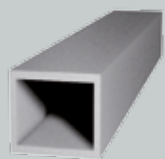
recommended fixing with flashing (provided by installer) on top of the high corrugation and side lap of PC panel



alternate fixing retention washer



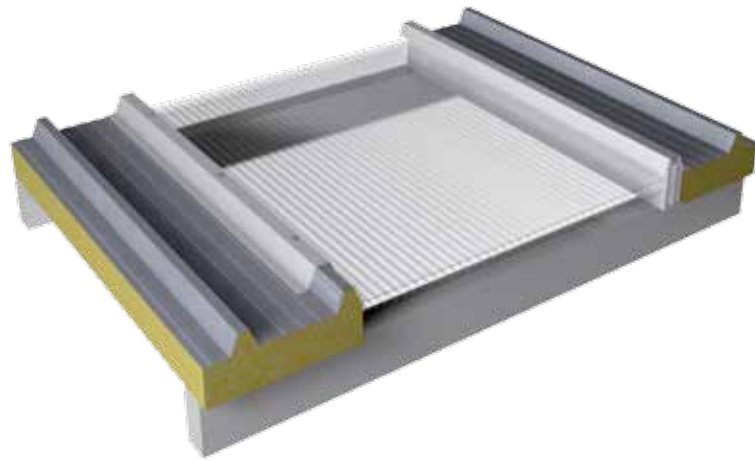
sealing tape



e. g. rectangular bar (provided by installer) for lining of substructure

## PC 21000-30-XL

The 21000-30-XL is a 30 mm thick panel and offers a flexible holding fixture for various high corrugations. The side laps (depends on ordered quantity) can be customized to requirements. We recommend fixing of panel to high corrugations.

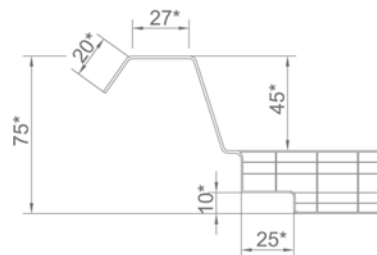


## Customisation of side laps

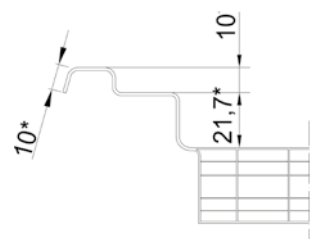
The PC 21000-30-XL offers the possibility to change dimensions of side laps with relatively small investments (depends on ordered quantity). This way a wide variety of shapes is possible and depending on customer requirements the high corrugation can be adapted to shape of sandwich panel intended for use.

Following side lap shapes can currently be offered:

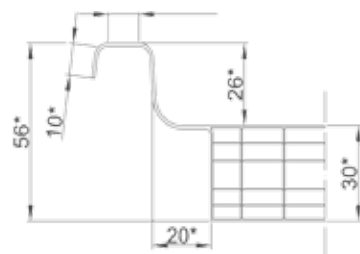
### PC 21000-30-XL



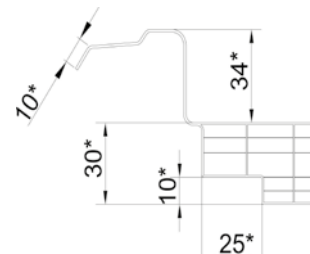
### PC 21000-30-XL-PA



### PC 21000-30-XL-AC



### PC 21000-30-XL-PE



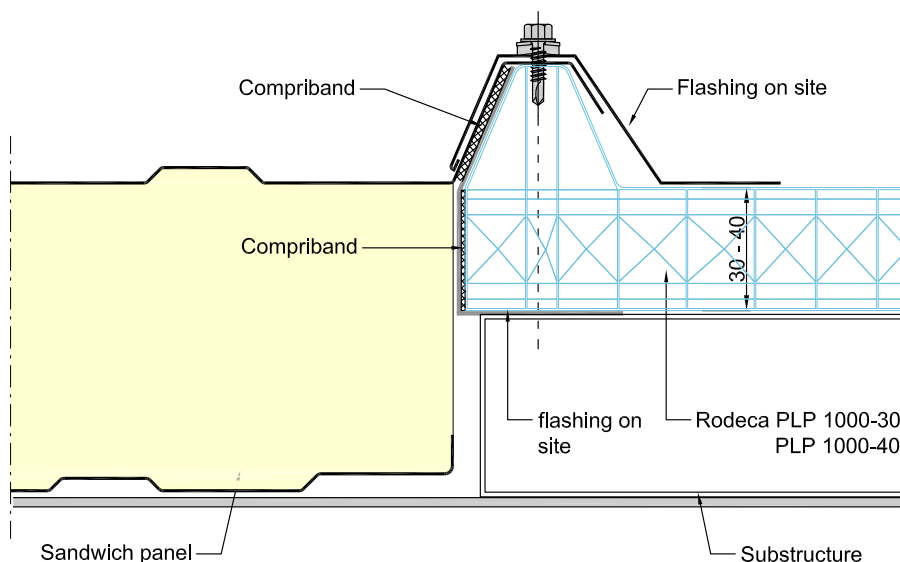
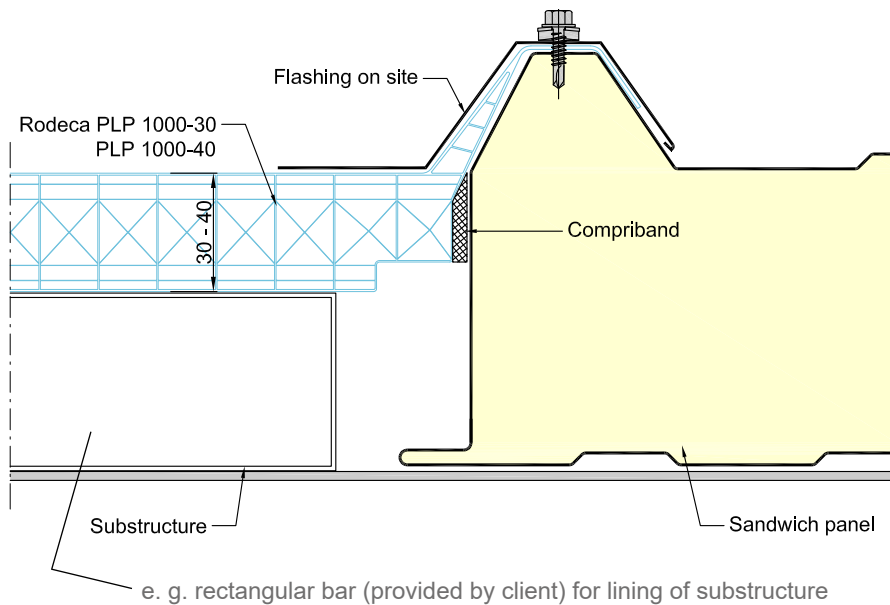




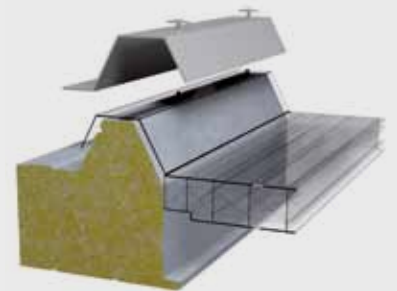
## PLP 1000-30 / PLP 1000-40

The PLP 1000-30 is a 30 mm thick Polycarbonate panel (alternatively 40 mm - PLP 1000-40) with a side lap on one side and a full PC high corrugation on the other side to fix various types of sandwich panels. The cover width of 1000 mm makes it the ideal solution for buildings with usual sandwich panel roofing. The recommended minimum pitch is 5°.

### Fixing to sandwich panel construction



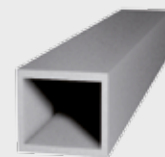
## Accessories



recommended fixing flashing (provided by installer) on top of the high corrugation and side lap of PC panel

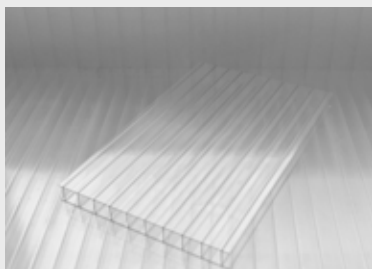


sealing tape



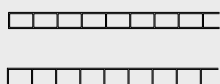
e. g. rectangular bar (provided by client) for lining of substructure

## Multi Wall Sheets



## Multi Wall Sheets

4



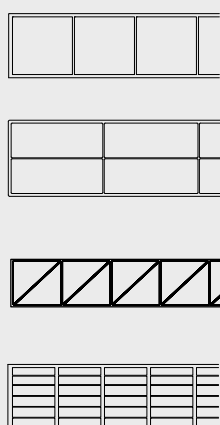
6



10



16



## Production program / available thicknesses

Multi Wall Sheets (MWS) can be used in many different ways. They are producible in different thicknesses and widths. Variable widths can be produced with closed edges according to customers demand. All MWS are fire rated B-s1, d0 according to DIN EN 13501. Standard colour for all MWS is clear. Additional standard colours depending on product type are available.

4	MWS	Up value <sup>1</sup> Installation vertical / horizontal	Weight kg/m <sup>2</sup>	Variable width	Standard width <sup>2</sup>
	4-2	3.9 / 4.4 W/m <sup>2</sup> K	approx. 0.83	500 - 1050 mm	2100 mm
4,5-2	3.8 / 4.3 W/m <sup>2</sup> K	approx. 1.0	500 - 1050 mm	-	

6	MWS	Up value <sup>1</sup> Installation vertical / horizontal	Weight kg/m <sup>2</sup>	Variable width	Standard width <sup>2</sup>
	6-2	3.5 / 3.9 W/m <sup>2</sup> K	approx. 1.3	-	2100 mm
6(10)-2	3.5 / 3.9 W/m <sup>2</sup> K	approx. 1.3	550 - 1250 mm	1200 mm	

10	MWS	Up value <sup>1</sup> Installation vertical / horizontal	Weight kg/m <sup>2</sup>	Variable width	Standard width <sup>2</sup>
	10-2	3.0 / 3.2 W/m <sup>2</sup> K	approx. 1.7	550 - 1250 mm	2100 mm
10-4	2.5 / 2.7 W/m <sup>2</sup> K	approx. 1.75	730 - 1250 mm	2100 mm	

16	MWS	Up value <sup>1</sup> Installation vertical / horizontal	Weight kg/m <sup>2</sup>	Variable width	Standard width <sup>2</sup>
	16-2	2.6 / 2.9 W/m <sup>2</sup> K	approx. 2.0	630 - 1250 mm	980 + 1200 mm
	16-3	2.2 / 2.4 W/m <sup>2</sup> K	approx. 2.7	-	980 + 1200 mm
	16-7	1.8 / 1.9 W/m <sup>2</sup> K	approx. 2.6	700 - 1230 mm	980 + 1200 mm 2100 mm
	16-N	2.4 / 2.6 W/m <sup>2</sup> K	approx. 2.7	950 - 1260 mm	-
16- 5 HI	2.0 / 2.1 W/m <sup>2</sup> K	approx. 4.0	-	980 + 1200 mm	

<sup>1</sup> Depending on horizontal or vertical installation as interior or exterior application according to DIN EN ISO 6946:2008 / DIN EN ISO 10077-2:2008

<sup>2</sup> Width tolerance of - 2 / + 6 mm for all widths (variable and standard)



## Production program / available thicknesses

20	MWS	Up value <sup>1</sup> Installation vertical / horizontal	Weight kg/m <sup>2</sup>	Variable width	Standard width <sup>2</sup>
	20-2	2.5 / 2.8 W/m <sup>2</sup> K	approx. 2.8	630 - 1250 mm	-
	20-7	1.5 / 1.6 W/m <sup>2</sup> K	approx. 2.9	700 - 1230 mm 2100 mm	-

25	MWS	Up value <sup>1</sup> Installation vertical / horizontal	Weight kg/m <sup>2</sup>	Variable width	Standard width <sup>2</sup>
	25-7	1.4 / 1.5 W/m <sup>2</sup> K	approx. 3.2	700 - 1230 mm 2100 mm	980 + 1200 mm

32	MWS	Up value <sup>1</sup> Installation vertical / horizontal	Weight kg/m <sup>2</sup>	Variable width	Standard width <sup>2</sup>
	32-10	1.2 / 1.2 W/m <sup>2</sup> K	approx. 3.6	700 - 1230 mm	1230 mm

40	MWS	Up value <sup>1</sup> Installation vertical / horizontal	Weight kg/m <sup>2</sup>	Variable width	Standard width <sup>2</sup>
	40-10	1.0 / 1.1 W/m <sup>2</sup> K	approx. 4.0	700 - 1230 mm	980 mm

## Versions

- Heatbloc-Design (depends on product type) either as DecoColor or DuoColor
- Frozen-Design, DecoColor with structuring agent for outer wall of PC 16-2
- High Impact version PC 16-5 HI for improved protection against hail
- Closed edges for all above mentioned widths upon customer request (please inquire minimum order quantity)

## Performance characteristics

All Multi Wall Sheets are CE marked in accordance to the CPR and EN 16153. The corresponding performance characteristics are given in the declarations of performance.

Installation advice, application requirements and further technical information can be found in our technical manuals and installation manuals.

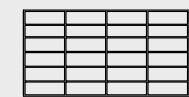
## Multi Wall Sheets



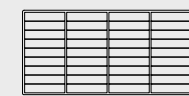
20



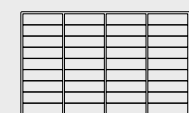
25



32

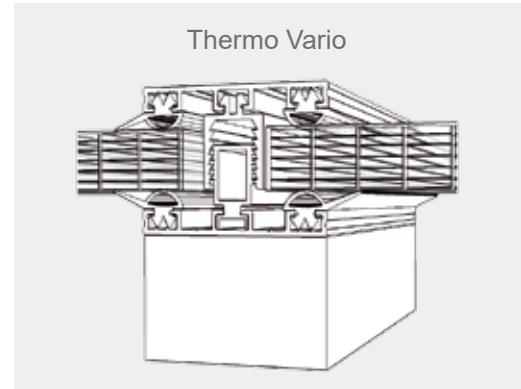
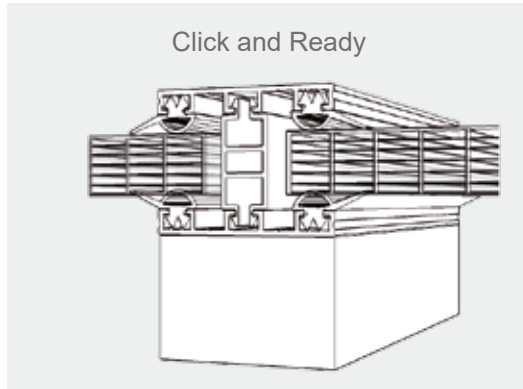


40



## Applications

- winter gardens
- conservatories
- roofing constructions
- pergola
- light-bands
- canopies
- interior applications



## MWS accessories of Aluminium and Polycarbonate

### Polycarbonate (PC) adapter profiles for „click and ready“ applications



PC adapter profile for 10 mm MWS



PC adapter profile for 16 mm MWS

### Adapter profiles for Thermo Vario applications in Aluminium and PC



aluminium adapter profile for 16 mm aluminium profiles



aluminium adapter profile for 25 mm aluminium profiles



aluminium adapter profile for Thermo Vario aluminium profiles

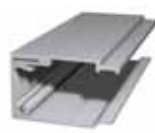


PC adapter profile for Thermo Vario

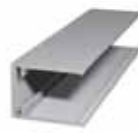
### Aluminium profiles



aluminium U profile with drip nose for 6 to 40 mm MWS



two parts aluminium profile with clamp batten for 10 to 25 mm MWS



aluminium U profile without drip nose for 16 mm MWS



aluminium profile 60 mm width for all MWS

### Gaskets



TPE gasket grey for 60 mm aluminium profile



TPE purlin gasket grey



TPE gasket grey for two parts aluminium profile



EPDM gasket for wall connection profile



self adhesive support strip 60 mm width, TPE grey

Installation advice, application requirements and further technical information can be found in our technical manuals and installation manuals.



## Polycarbonat installations systems for MWS

### H connection profiles

H Profiles are available for following MWS thicknesses: 4 mm, 6 mm\*, 8 mm, 10 mm\* and 16 mm



PC H profile for 4 mm MWS



PC H profile for 8 mm MWS



PC H profile for 16 mm MWS

### U profiles

U profiles are available for following MWS thicknesses: 4 mm, 6 mm\*, 8 mm, 10 mm\* and 16 mm



U profile for 4 mm MWS



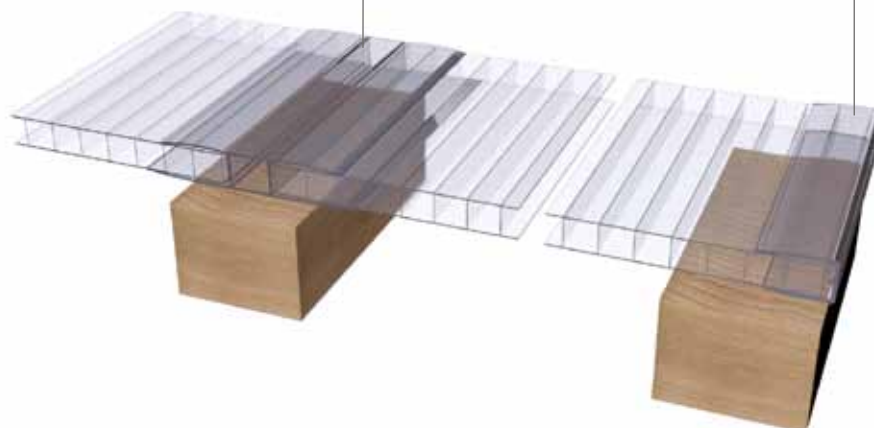
U profile for 8 mm MWS



U profile for 16 mm MWS

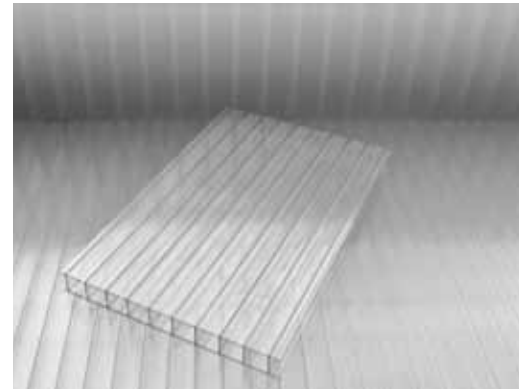
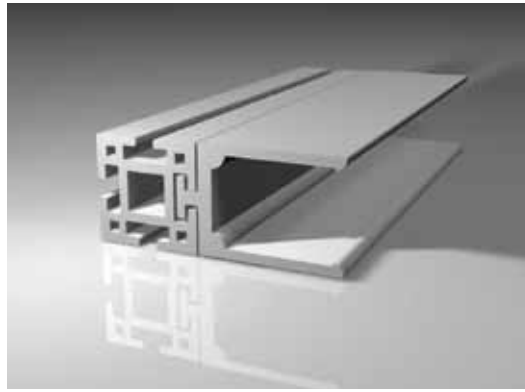
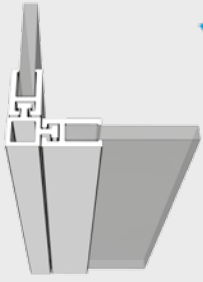
H profile

U profile



\* without figure

Installation advice, application requirements and further technical information can be found in our technical manuals and installation manuals.

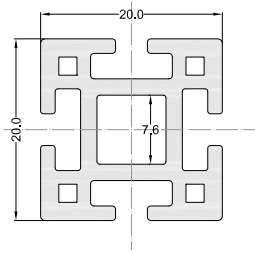


## Advantages

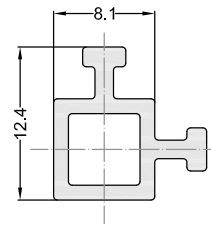
- high flexibility due to individually combinable profiles
- sellable as single items or construction kit
- thermally insulated
- lower cost than anodized or coated aluminum profiles
- screwless mounting
- easy installation without any special tools
- easy mounting and demounting
- a profile range user-defined extendible
- forget about tarnished profiles

## Rodeca Creativity - modular construction system

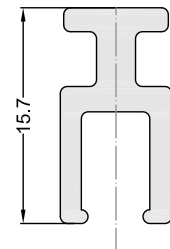
### PC profile range for 4 mm and 6 mm Multi Wall Sheets



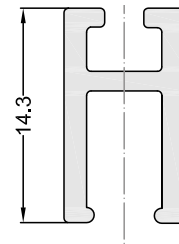
all-round profile connector 4 mm MWS



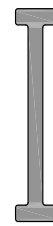
corner connector 4 mm MWS



base profile for 4 & 6 mm MWS

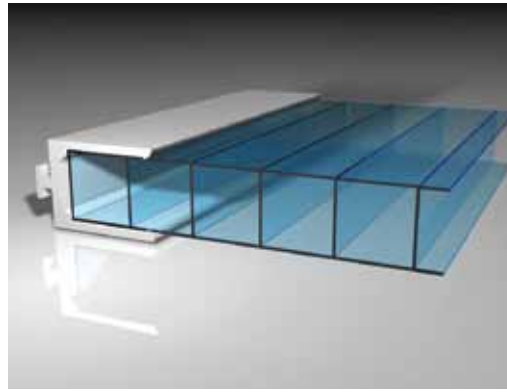


base profile for 4 & 6 mm MWS

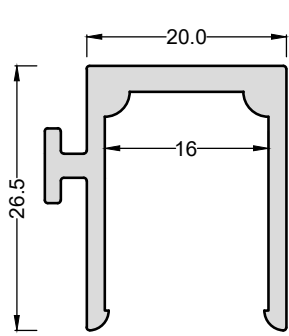


TPE hinge profile

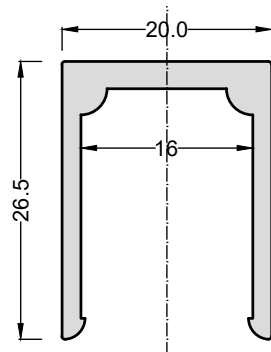




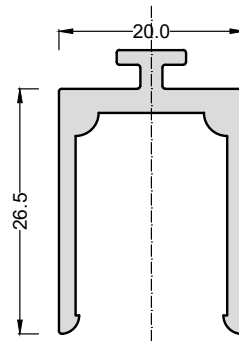
## PC profile range for 16 mm Multi Wall Sheets



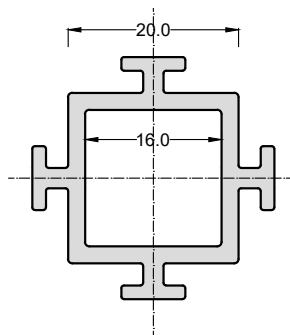
corner connector



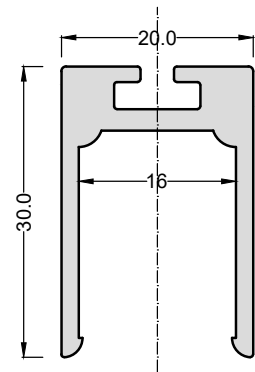
cap profile



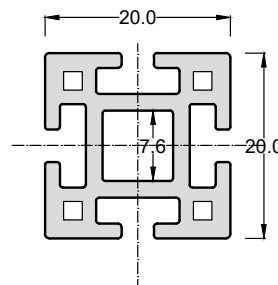
base profile



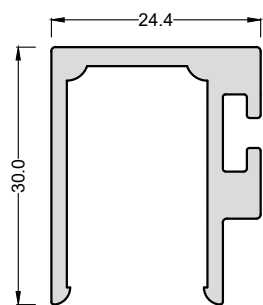
all-round profile connector



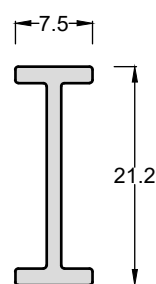
base profile



all-round profile connector



corner connector

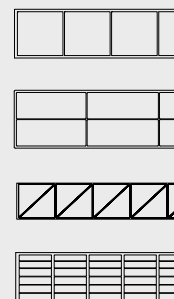


TPE hinge profile

## Applications

- house and garden
- home and hobby
- hobby greenhouses
- individual constructions
- interior fittings
- composter
- tomato greenhouses
- sliding doors
- partitions
- modular play pens

Our MWS range  
in 16 mm thickness



16

...the ideal addition!



## Germany

Rodeca GmbH  
Freiherr-vom-Stein-Straße 165  
D-45473 Mülheim an der Ruhr  
Fon +49 (0) 208 76502 - 0  
Fax +49 (0) 208 76502 -11  
info@rodeca.de  
[www.rodeca.de](http://www.rodeca.de)

## United Kingdom

Rodeca Ltd.  
Bentalls House  
Bentalls  
Pipps Hill Industrial Estate  
Basildon  
Essex SS14 3BS  
Fon + 44 (0) 1268 531466  
Fax + 44 (0) 1268 526351  
sales@rodeca.co.uk  
[www.rodeca.co.uk](http://www.rodeca.co.uk)

## Italy

ANSA Termoplastici S.r.l./Rodeca Italy  
Concessionaria per l'Italia di Rodeca GmbH  
Via Nazionale, 66  
24060 Sovere (BG)  
Fon +39 035 981431  
Fax +39 035 981529  
info@rodeca.it  
[www.rodeca.it](http://www.rodeca.it)

## The Netherlands

Rodeca Systems b.v.  
Koperweg 11 N  
2401 LH Alphen aan den Rijn  
Fon +31 (0) 172 416 747  
Fax +31 (0) 172 419 090  
info@rodeca.nl  
[www.rodeca.nl](http://www.rodeca.nl)


## Australia

(plus New Zealand, Malaysia & Singapore)  
Architectural Building Elements Pty Ltd  
17 Business Park Drive  
Ravenhall  
Victoria 3023  
Australia  
Fon + 61 (0) 3 9755 8136  
info@rodeca.com.au  
[www.rodeca.com.au](http://www.rodeca.com.au)

## South America

REPLAEX RESINAS PLÁSTICAS EXTRUDADAS LTDA  
Autorizado America do Sul de Rodeca GmbH  
Estrada da Ligação, 839 - Taquara - Rio de Janeiro  
RJ - BRASIL cep. 22713-470  
Fon : +55 (0) 21 2446-8811  
Fax : +55 (0) 21 2446-7181  
vendas@replaex.com.br  
[www.replaex.com.br](http://www.replaex.com.br)

## Rodeca product groups overview

 **Translucent Building Elements**  
Lichtbauelemente

 **Windows**  
Fenster

 **Multi Function Panels**  
Multi-Funktions Paneele

 **U-Panels**  
U-Paneele

 **RT-Thermolight**  
RT-Thermolight

 **Multi Wall Sheets**  
Hohlkammerscheiben

Errors and changes excepted.

Stay always up to date. Our most recent product literature you can find as PDF files in the download section of our homepage [www.rodeca.de](http://www.rodeca.de)