

Brio®

612 Pocket Cavity Kit Installation Instructions

Brio Australia

P: +61 2 87186718

W: brio.com.au

E: brio.sales@allegion.com

Brio UK

P: +44 191 2291224

W: briouk.com

E: brio.sales.uk@allegion.com

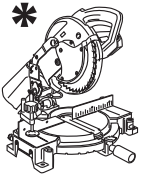
Brio USA

P: +1 585 3195599

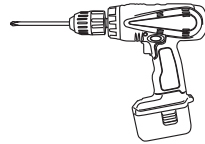
W: briousa.com

E: brio.sales.usa@allegion.com

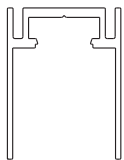
Recommended Tools



*NOTE: Sharp
aluminium
blade only

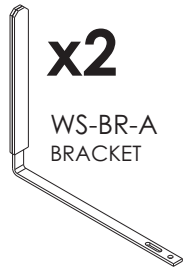


Kit Components



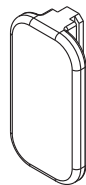
x1

RST
TRACK



x2

WS-BR-A
BRACKET



x1

WS-FP
FINGER
PULL



x4

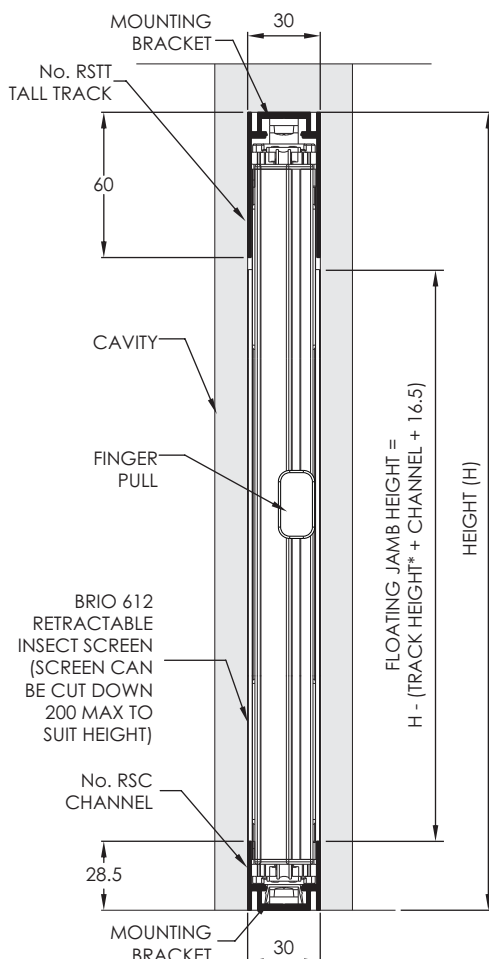
SP8X10S
SCREWS



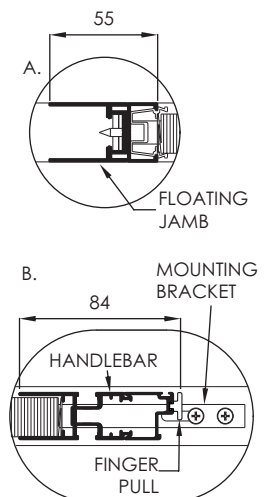
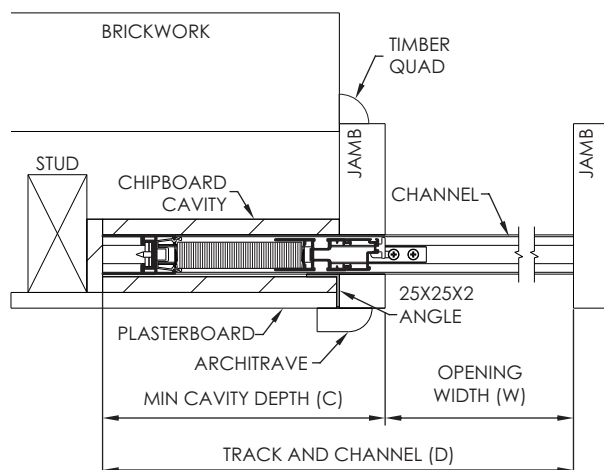
x8

SC8GX16S
SCREWS

Opening Preparation



SCREEN RETRACTED IN CAVITY



| OPENING WIDTH (W) | SCREEN WIDTH | MIN CAVITY DEPTH (C) | TRACK AND CHANNEL (D) |
|-------------------|--------------|----------------------|-----------------------|
| 955 | 1100 | 145 | 1100 |
| 1345 | 1500 | 155 | 1500 |
| 1830 | 2000 | 170 | 2000 |
| 2510 | 2700 | 190 | 2700 |
| 3385 | 3600 | 215 | 3600 |
| 4260 | 4500 | 240 | 4500 |

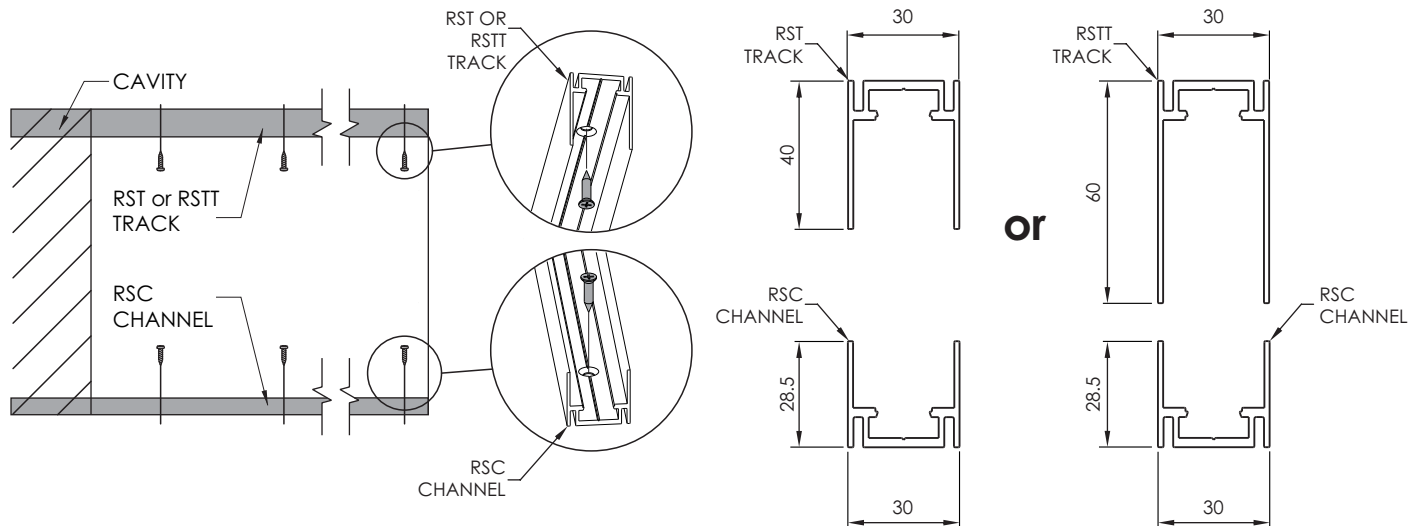
OPENING WIDTH (W) = TRACK AND CHANNEL (D) - MIN CAVITY DEPTH (C)

SCREEN WIDTH = TRACK AND CHANNEL (D)

* SEE "FLOATING JAMB PREPARATION"

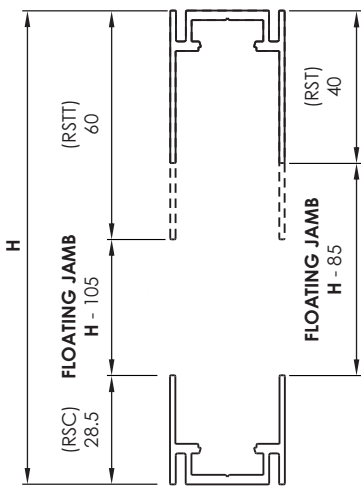
Track and Channel

Fit track and channel

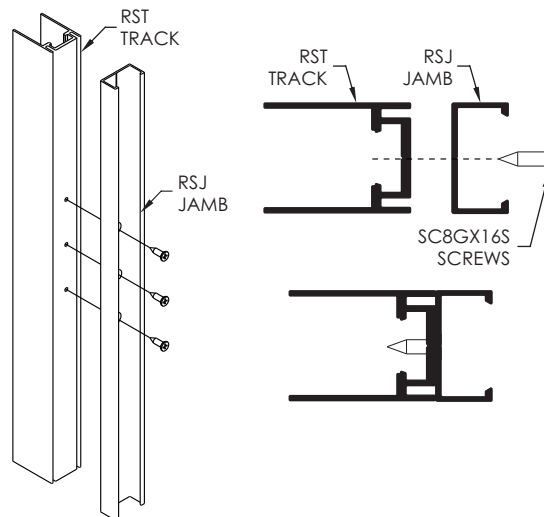


Floating jamb preparation

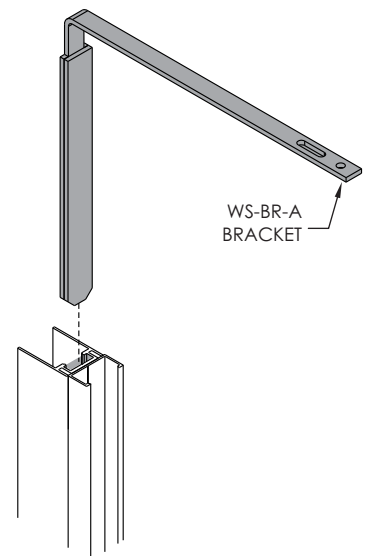
Cut RST and RSJ (Floating Jamb) to size



Screw fix using pre-existing holes in RSJ

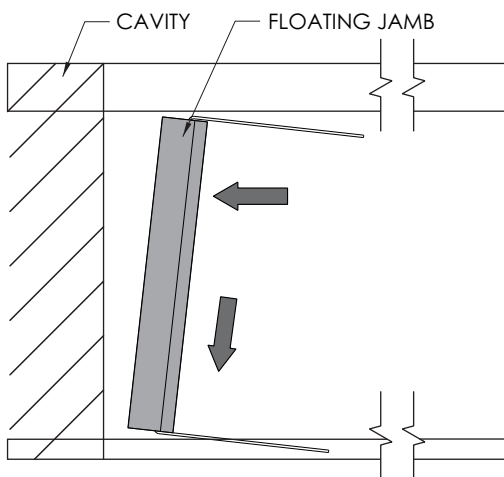


Insert bracket into pocket

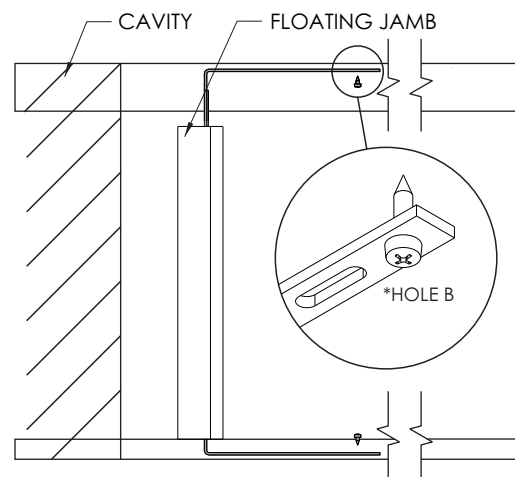


Fitting floating jamb

Push brackets all the way in.
Place floating jamb in track and channel.

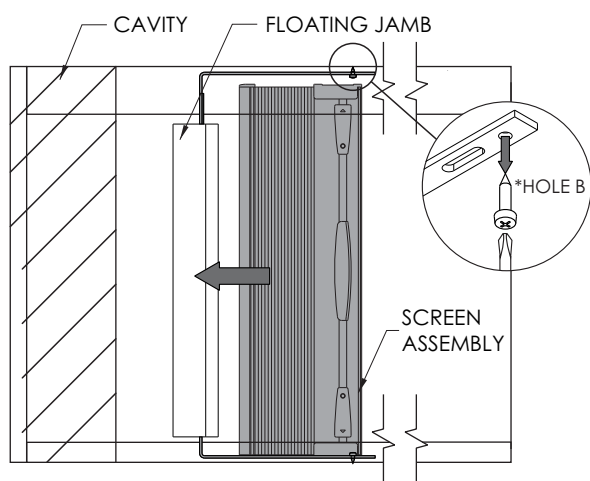


Extend brackets out to reach of the track and channel. Temporarily screw fix floating jamb to track and channel outside of the cavity using brackets

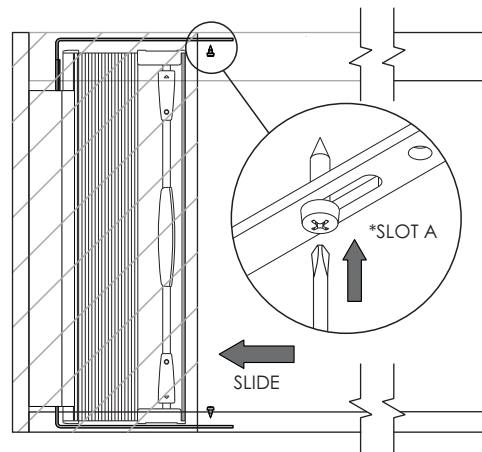


Fitting screen

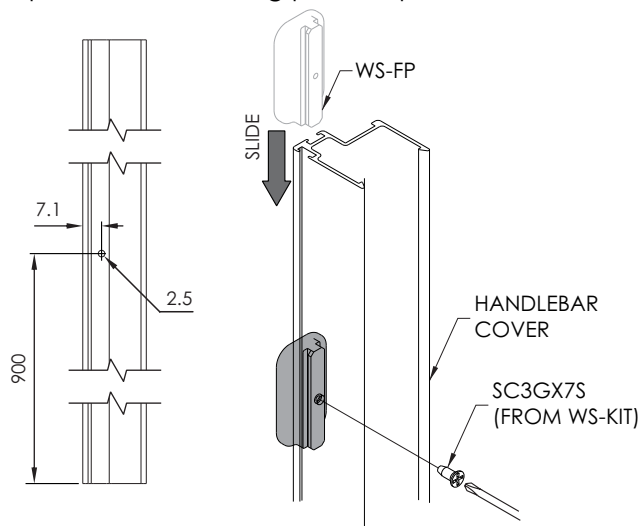
Prepare screen as per instructions supplied (INSTSCREEN). Clip screen into floating jamb. Once screen has been clipped in, unscrew fixings between brackets, track and channel



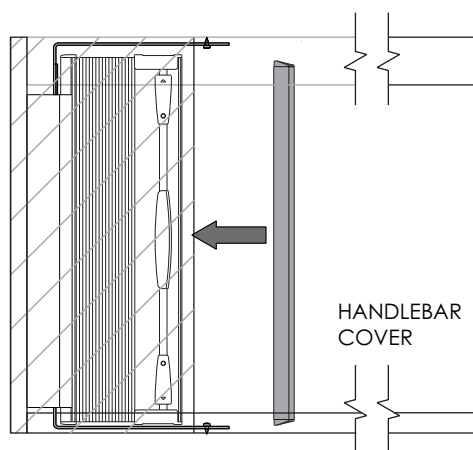
Push assembly into the cavity (Ensure screen is level). Screw fix brackets into place. Continue with screen installation as per INSTSCREEN.



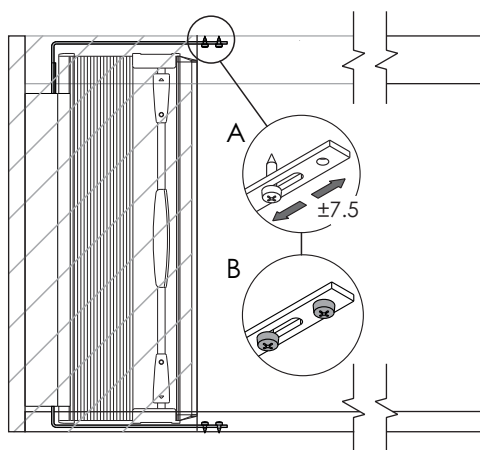
Pre-drill 2.5mm hole in handlebar cover (as shown below). Slide finger pull into t-slot and screw fix into place. Fit remaining parts as per INSTSCREEN



Before fitting handlebar cover (assembly as per screen instructions) ensure the cords are not twisted or tangled.



Adjust screen to line up to the edge of the cavity by loosening screw (A). Once lined up fix screws (A) and (B) into the bracket to lock it off.



System Overview

