



# 6000 Series

Door furniture



Legge offers a range of leading hardware furniture designs for commercial and quality residential applications. Legge 6000 Series has a round rose with a wide selection of designer levers to choose from.

The Legge 6000 Series will enhance the standard and elegance of any residential and commercial applications including apartments, office fitouts, hotels, and high end homes.



## Features

- Constructed of quality components, with forged brass levers and inner rose
- All Legge 6000 Series levers are available in a square rose option known as the 8000 Series
- Furniture re-handed by simple relocation of stop block
- Heavy duty spring provides a smooth, positive return action of the lever and eliminates drooping, extending the life of the product
- The 10 year mechanical warranty provides specifiers and users with assured quality and performance
- Suitable for use on fire door assemblies when used with fire rated locks and latches

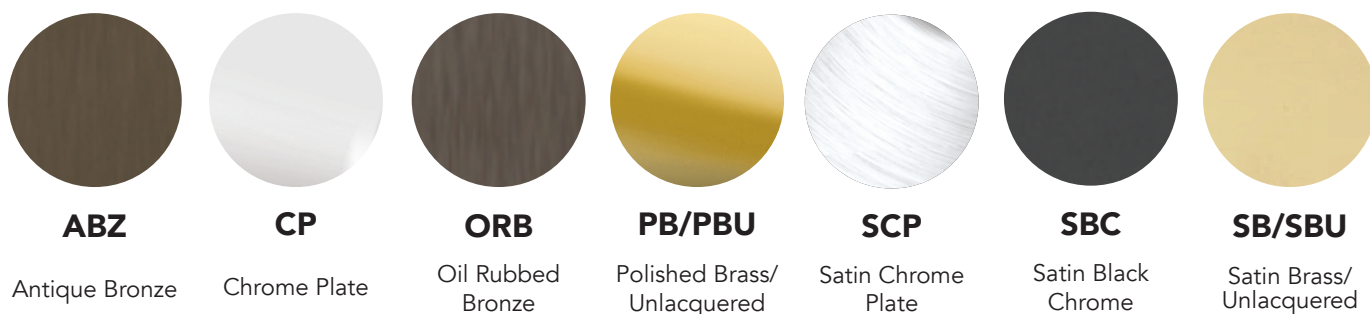
Warranties	
Mechanical	10 years
Finish	<a href="http://allegion.co.nz/finisheswarranty">allegion.co.nz/finisheswarranty</a>

# Specification guide

Function	Lever	Finish
Lock/latch furniture ..... 6000	refer to following pages	Antique bronze ..... .A
Half set .....6001		Chrome plate ..... C
Half set fixed ..... 6002		Oil rubbed bronze ..... ORB
Blank rose ..... 6003		Polished brass ..... P
Passage latch set ..... 6005		Polished brass unlacquered ..... PBU
Privacy latch set ..... 6006		Satin chrome plate ..... SCP
		Satin black chrome ..... SBC
		Satin brass ..... .SB
		Satin brass unlacquered ..... .SBU

- Function**  
Select the desired function e.g. Passage set ..... 6005
- Lever**  
Select the required lever design - e.g. Leonardo #12 ..... 6005/12
- Finish**  
Select the desired finish e.g. Satin chrome plate ..... 6005/12S

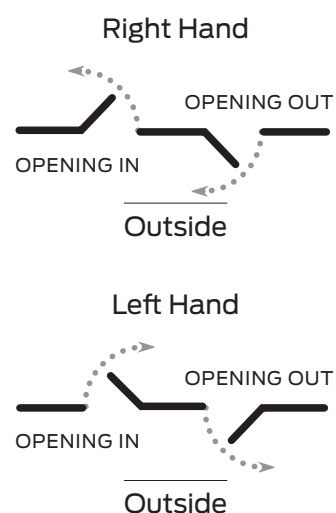
## Finishes



## Specifications

<b>Door type</b>	Timber or metal
<b>Door thickness</b>	Latch furniture 32mm to 50mm Passage set 32mm to 50mm Privacy set 32mm to 42mm
<b>Backset</b>	60mm
<b>Spindle size</b>	7.6mm
<b>Compatible locks/latches</b>	Schlage ME Series mortice locks Legge 990MF Series mortice locks
<b>Fixing</b>	Bolt-through concealed fixing. Screw length 75mm
<b>Materials</b>	Forged brass levers and roses

## Handing guide



## Testing and Compliance



### Fire Rating:

Successfully tested on fire door assemblies in accordance with AS1905 Part1: Fire resistance doorsets. Check with fire door manufacturer prior to installation.



### Accessibility:

Compliant to the AS 1428:1-2009 Design for Access and Mobility

### Caution:

When door closers are installed and adjusted to meet reduced opening force requirements, there may be insufficient power to reliably close and latch the door, depending on prevailing operating conditions.

### Note:

In areas of high wind pressure and/or air conditioning pressures, the LCN Automatic Door Operators are recommended.

# Functions

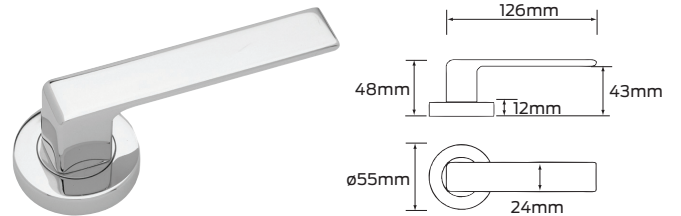
Functions	Outside	Inside
<b>6000 - Lock/latch furniture</b> Pair of levers to be used with a latch or mortice lock or converted to dummy trim with fixing kit		
<b>6001 - Half set</b> Single lever to be used with a latch or converted to dummy trim with fixing kit		
<b>6002 - Half set fixed</b> Single inactive lever which is used as a door pull or matching trim		
<b>6003 - Blank rose</b> Used with a single lever for through fixing		
<b>6005 - Passage latchset (60mm backset)</b> Both levers always unlocked		
<b>6006 - Privacy latchset (60mm backset)</b> Push-button locks outside lever (outside emergency release). Inside lever unlocks door		

## Legge 6000 Series levers

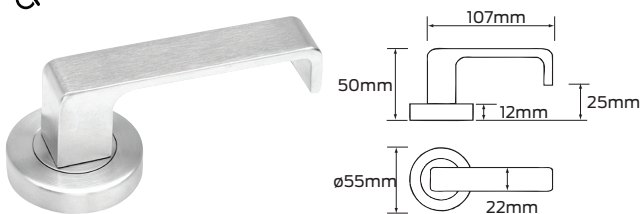
**Alpha #29**



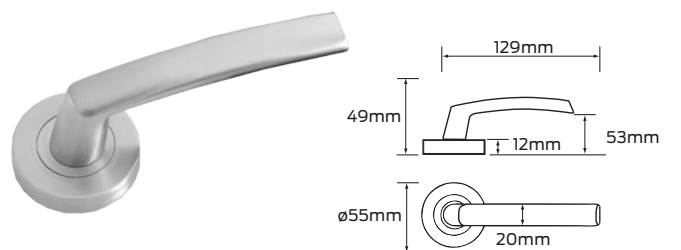
**Angelo #57**



**Bergen**

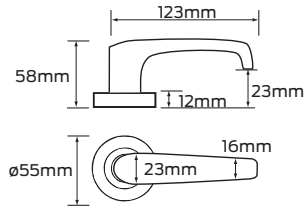


**Cisa #59**

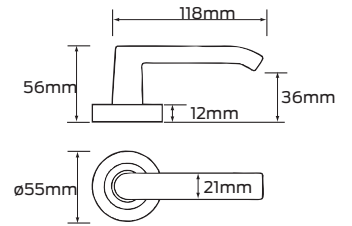


# Legge 6000 Series levers

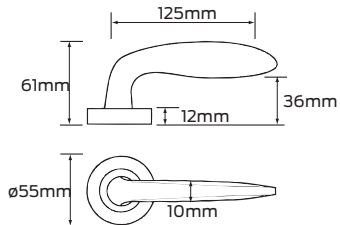
**Ergo #62**



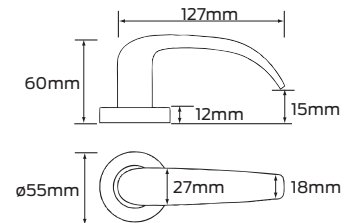
**Leonardo #12**



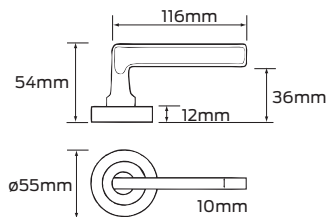
**Monet #50**



**Neptune**



**Renoir #52**



**Rubens #56**

