



**BENTLEY®**

FORESHADOWING, FREEWHEEL, SUN DOG, AND WINGING IT  
LIGHT CATCHER COLLECTION

[WWW.HERITAGECARPETS.CO.NZ](http://WWW.HERITAGECARPETS.CO.NZ)



**BENTLEY**



## Foreshadowing, Freewheel, Sun Dog, and Winging It

In nature, color is the trick of light—direct light and reflected, distorted by heat and cold, or filtered by clouds, leaves, and shadows. As light moves, color emerges as an endlessly changing spectrum.

The **Light Catcher™ Collection** is inspired by these plays with color. Four patterns capture four moments of light creating color. **Freewheel™** is like an atmospheric swirl of color, a small pattern that is as fine as particles floating in the air, caught in a ray of sunshine. The pattern in **Winging It™** is a reference to the iridescence of a feather or an insect's wing. **Sun Dog™** is a boldly scaled pattern named for a rare kind of mirage—a halo of color and light that appears on an open landscape when sunlight is refracted through ice crystals. **Foreshadowing™** is the underlying palette for each colorway in the collection. Less obscured by pattern, **Foreshadowing** simply, in an orderly way, brings each color story forward, creating an ideal companion with contrast in texture and value.

All of these elusive effects of light are captured here in the **Light Catcher Collection**.





FORESHADOWING 6FOT8, IRIDESCENT 407825, 12 FT - BROADLOOM



FORESHADOWING 6FOT8, OPALESCENT 407823, 18 IN X 36 IN - ASHLAR (TOP LEFT)  
SUN DOG 6SU24, OPALESCENT 407823, 18 IN X 36 IN - ASHLAR (BOTTOM RIGHT)



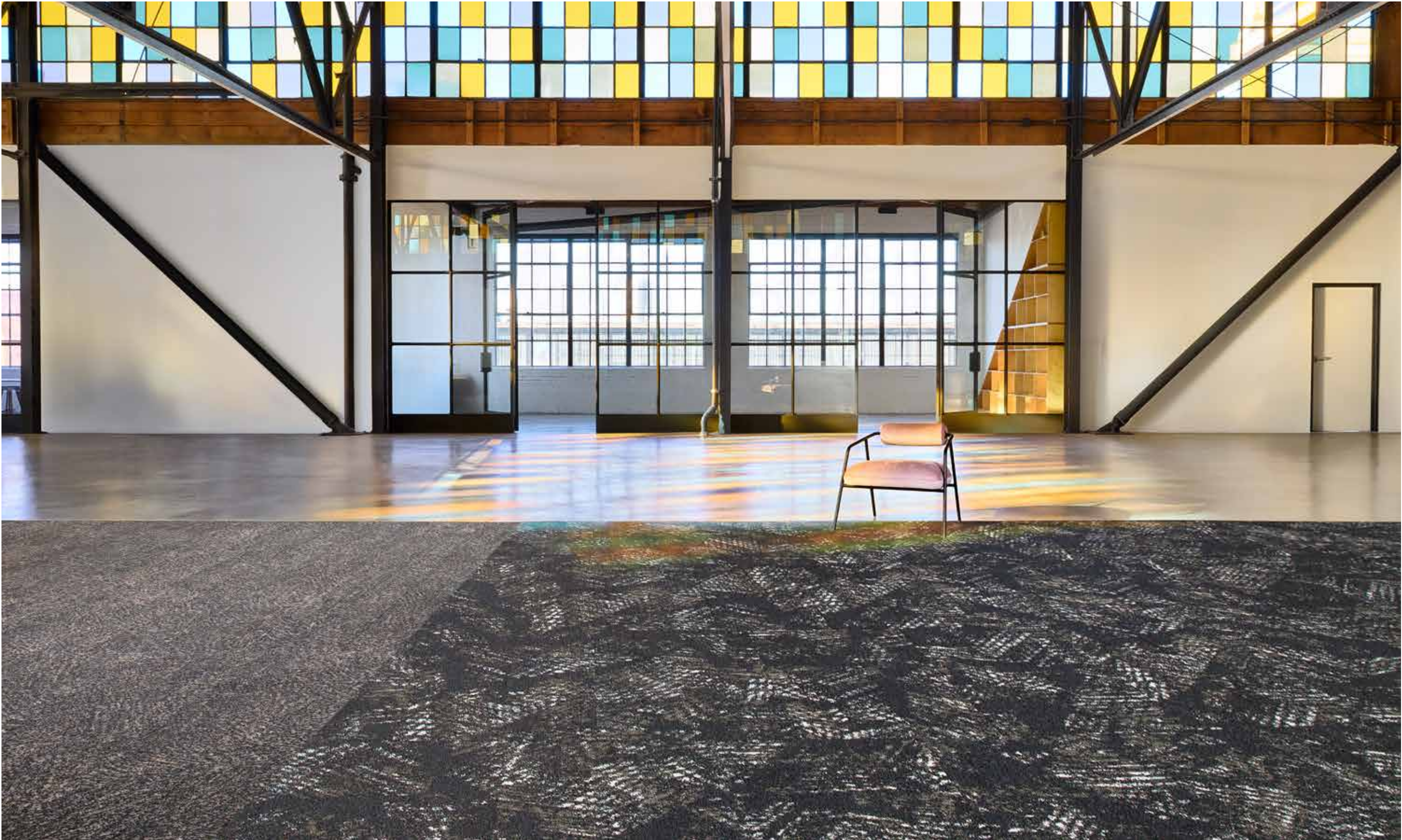


FORESHADOWING 6FOT8, OPALESCENT 407823, 18 IN X 36 IN - MONOLITHIC



SUN DOG 6SU24, TRANSLUCENT 407821, 24 IN X 24 IN - BRICK (LEFT)  
FORESHADOWING 6FOT8, TRANSLUCENT 407821, 24 IN X 24 IN - BRICK (RIGHT)





**FREEWHEEL 6FR24, IRIDESCENT 407825, 18 IN X 36 IN - BRICK (LEFT)**  
**WINGING IT 6WI24, IRIDESCENT 407825, 18 IN X 36 IN - BRICK (RIGHT)**





FREEWHEEL 6FR24, OPALESCENT 407823, 18 IN X 36 IN - MONOLITHIC

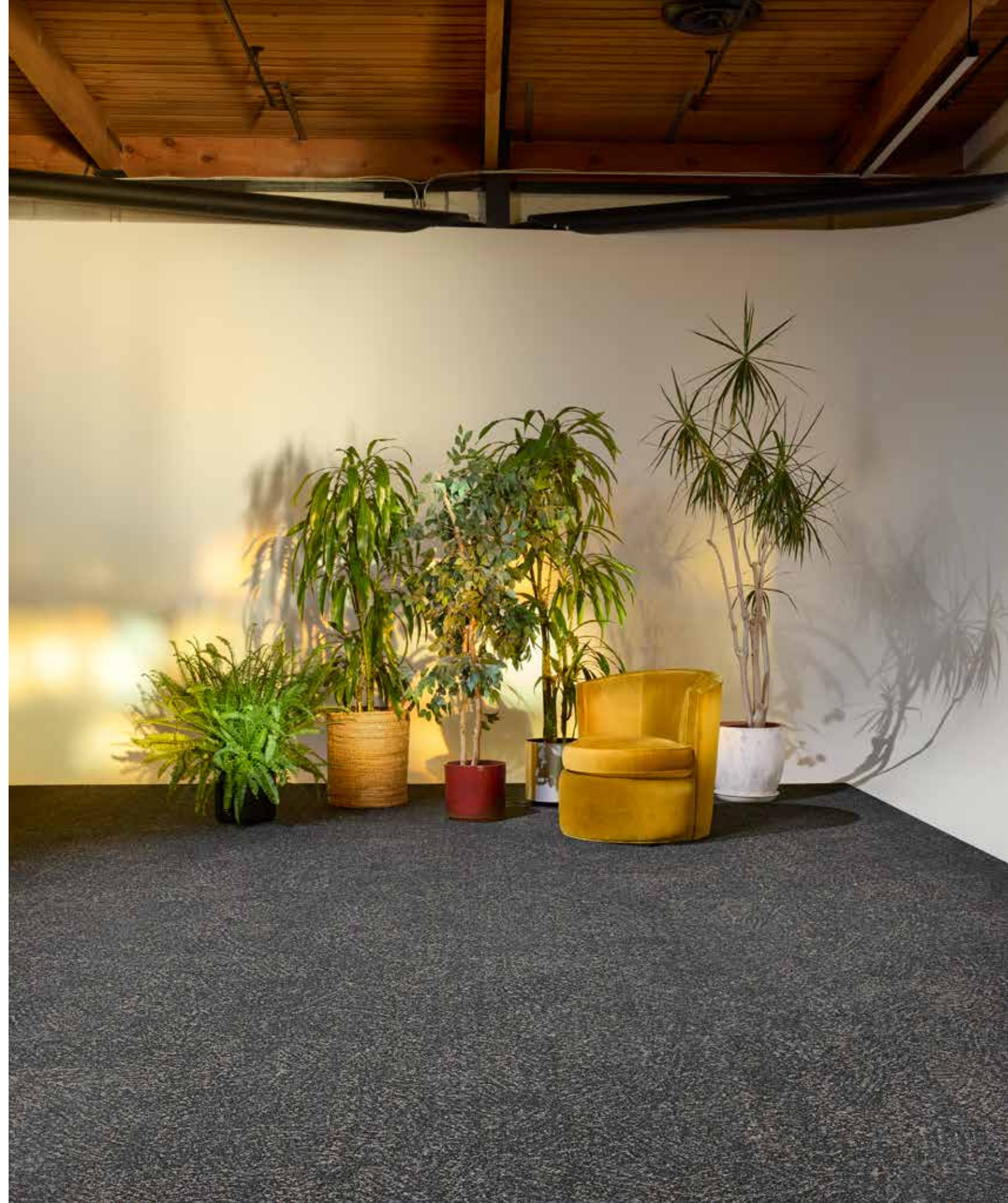


WINGING IT 6WI24, TRANSLUCENT 407821, 24 IN X 24 IN - BRICK





**SUN DOG 6SU24, VIVID 407828, 18 IN X 36 IN - HERRINGBONE**



**FREEWHEEL 6FR24, VIVID 407828, 18 IN X 36 IN - BRICK**



FORESHADOWING™



Spectral 407820



Translucent 407821



Opalescent 407823



Structural 407824



Iridescent 407825



Radiant 407826



Prismatic 407827



Vivid 407828

**Style Number** 6FOT8  
**Product Construction** Tufted Textured Loop  
**Fiber** Bentley Premium™ Nylon  
**Dye Method** Solution Dyed

For complete product specifications, visit [bentleymills.com](https://bentleymills.com)

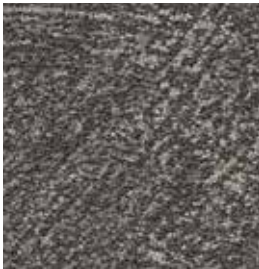
**PVC-Free Backing Options**  
AFIRMA II™ Hardback Tile  
AFFIXX™ Hardback Tile  
LuxFelt™ Cushion Tile  
NexStep® Cushion Tile  
EliteFlex™ 6 ft Cushion  
High PerformancePC Broadloom

**Size Options**  
18 in x 36 in, 24 in x 24 in  
18 in x 36 in, 24 in x 24 in  
18 in x 36 in, 24 in x 24 in  
18 in x 36 in, 24 in x 24 in  
6 ft  
12 ft

FREEWHEEL™



Spectral 407820



Translucent 407821



Opalescent 407823



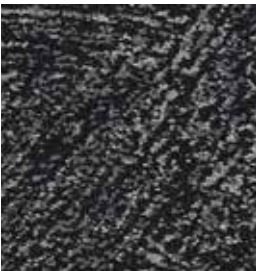
Structural 407824



Iridescent 407825



Radiant 407826



Prismatic 407827



Vivid 407828

**Style Number** 6FR24  
**Product Construction** Tufted Textured Loop  
**Fiber** Bentley Premium™ Nylon  
**Dye Method** Solution Dyed

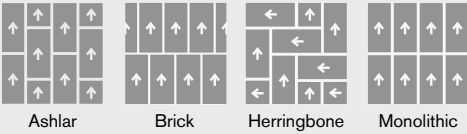
For complete product specifications, visit [bentleymills.com](https://bentleymills.com)

**PVC-Free Backing Options**  
AFIRMA II™ Hardback Tile  
AFFIXX™ Hardback Tile  
LuxFelt™ Cushion Tile  
NexStep® Cushion Tile

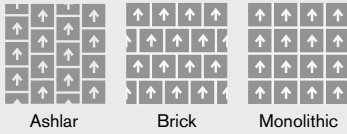
**Size Options**  
18 in x 36 in, 24 in x 24 in  
18 in x 36 in, 24 in x 24 in  
18 in x 36 in, 24 in x 24 in  
18 in x 36 in, 24 in x 24 in

Recommended Carpet Tile Installation Methods - Foreshadowing and Freewheel

18 in x 36 in



24 in x 24 in



(BK-CP-0225)



CE Mark excludes AFFIXX™ Hardback Tile.

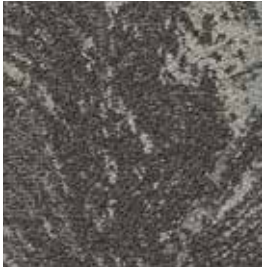




SUN DOG™



Spectral 407820



Translucent 407821



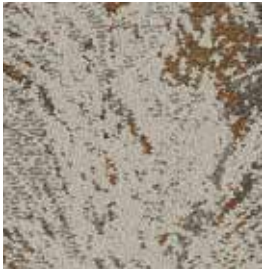
Opalescent 407823



Structural 407824



Iridescent 407825



Radiant 407826



Prismatic 407827



Vivid 407828

**Style Number** 6SU24  
**Product Construction** Tufted Textured Loop  
**Fiber** Bentley Premium™ Nylon  
**Dye Method** Solution Dyed

**PVC-Free Backing Options**  
AFIRMA II™ Hardback Tile  
AFFIXX™ Hardback Tile  
LuxFelt™ Cushion Tile  
NexStep® Cushion Tile

**Size Options**  
18 in x 36 in, 24 in x 24 in  
18 in x 36 in, 24 in x 24 in  
18 in x 36 in, 24 in x 24 in  
18 in x 36 in, 24 in x 24 in

For complete product specifications, visit [bentleymills.com](https://bentleymills.com)

WINGING IT™



Spectral 407820



Translucent 407821



Opalescent 407823



Structural 407824



Iridescent 407825



Radiant 407826



Prismatic 407827



Vivid 407828

**Style Number** 6WI24  
**Product Construction** Tufted Textured Loop  
**Fiber** Bentley Premium™ Nylon  
**Dye Method** Solution Dyed

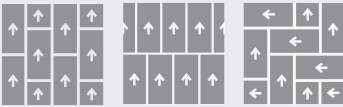
**PVC-Free Backing Options**  
AFIRMA II™ Hardback Tile  
AFFIXX™ Hardback Tile  
LuxFelt™ Cushion Tile  
NexStep® Cushion Tile

**Size Options**  
18 in x 36 in, 24 in x 24 in  
18 in x 36 in, 24 in x 24 in  
18 in x 36 in, 24 in x 24 in  
18 in x 36 in, 24 in x 24 in

For complete product specifications, visit [bentleymills.com](https://bentleymills.com)

Recommended Carpet Tile Installation Methods - Sun Dog and Winging It

18 in x 36 in

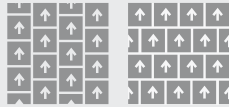


Ashlar

Brick

Herringbone

24 in x 24 in



Ashlar

Brick

Bentley's carpet products are manufactured in our California mill, a LEED Existing Buildings: Operations and Maintenance Gold certified facility. Product Certifications and Declarations can be found under the Sustainability section of our website. For more information, including additional backing options, detailed specifications, and warranties, please visit [bentleymills.com](https://bentleymills.com).

Carpet specifications and components are subject to normal manufacturing tolerances and may change without notice. Product warranted in accordance with the terms and conditions of Bentley's standard printed warranty in effect at time product is sold. All other warranties, including without limitation any implied warranties of merchantability or fitness for a particular purpose, are hereby disclaimed. Made in USA. Warning: unauthorized reproduction of this carpet design constitutes copyright infringement. ©2025 Bentley Mills, Inc.

The printed images may not be an accurate reproduction of the product's actual colorways. We strive to offer an authentic representation, but images may vary according to press run and location lighting. These images are intended as a guide only. If you would like a sample of this product, please call Customer Care at 800.423.4709.



**BENTLEY®**

800.423.4709 | BENTLEYMILLS.COM

14641 EAST DON JULIAN ROAD, CITY OF INDUSTRY, CALIFORNIA 91746

WWW.HERITAGECARPETS.CO.NZ