

BENTLEY®

REDUX DEUX

FAST TRACK

www.heritagecarpets.co.nz



REDUX™ DEUX 6RET4, CAUSE AND EFFECT 403781, 24 IN X 24 IN - BRICK

BENTLEY



Redux Deux



Reviving the absolute beauty of a simple texture, Redux Deux combines colorways from Multiplay™ II to create new color stories. Exploring a range of ideas, Redux Deux mingles gradients—some dynamic and some in hushed tones. In a shimmy of yarns, the color moves across the floor with blurred edges, creating easy transitions from one space to the next and one style to the next.

Redux Deux is the perfect choice for your new or re-do project, made with 100% recycled Bentley Premium™ Nylon and, as always, PVC-free. As part of our Fast Track offering, Redux Deux Carpet Tile is available in 12 colorways, shipping to you within 10 business days.



REDUX DEUX 6RET4, CAUSE AND EFFECT 403781, 24 IN X 24 IN - QUARTER TURN



REDUX DEUX 6RET4, CAUSE AND EFFECT 403781, 24 IN X 24 IN - BRICK



REDUX DEUX 6RET4, FIXER UPPER 403773, 18 IN X 36 IN - BRICK (CENTER)
MULTIPLAY II 6AMYT4, AFK 400055, 18 IN X 36 IN - BRICK (LEFT)
MULTIPLAY II 6AMYT4, GG 400060, 18 IN X 36 IN - BRICK (RIGHT)



REDUX DEUX 6RET4, REKINDLE 403772 AND UPDATE 403771, 18 IN X 36 IN - BRICK



REDUX DEUX 6RET4, UPDATE 403771, 18 IN X 36 IN - BRICK (CARPET TILE)
MEMORY™ BMMRY, FOURSQUARE 801984 - RANDOM ASHLAR (LVT)



REDUX DEUX 6RET4, REKINDLE 403772, 24 IN X 24 IN - RANDOM



REDUX DEUX 6RET4, BRING IT BACK 403778, 9 IN X 36 IN - ASHLAR (RIGHT)
MULTIPLAY II 6AMYT4, EASTER EGGS 400062, 18 IN X 36 IN - MONOLITHIC (LEFT)



REDUX DEUX 6RET4, BRING IT BACK 403778, 9 IN X 36 IN - HERRINGBONE

REDUX™ DEUX



Update 403771



Rekindle 403772



Fixer Upper 403773



Do Over 403774



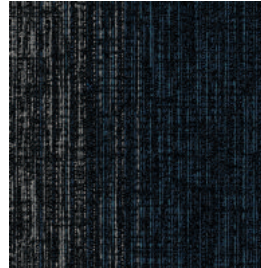
Postscript 403775



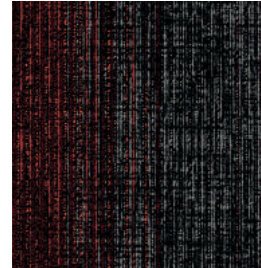
Begin Again 403776



Good As New 403777



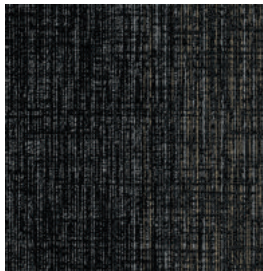
Bring It Back 403778



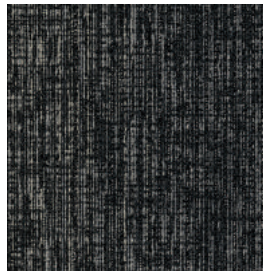
Refresh 403779



Restoration 403780



Cause And Effect
403781



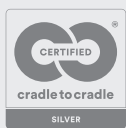
Jazz Up 403782

Style Number 6RET4
Product Construction Tufted Textured Loop
Fiber Bentley Premium™ Nylon
Dye Method Solution Dyed

PVC-Free Backing Options
AFIRMA II™ Hardback Tile
AFFIX™ Hardback Tile
LuxFelt™ Cushion Tile
NexStep® Cushion Tile

Size Options
9 in x 36 in, 18 in x 36 in, 24 in x 24 in
9 in x 36 in, 18 in x 36 in, 24 in x 24 in
9 in x 36 in, 18 in x 36 in, 24 in x 24 in
9 in x 36 in, 18 in x 36 in, 24 in x 24 in

For complete product specifications, visit bentleymills.com



CE Mark excludes AFFIX™ Hardback Tile.

Fast Track is Bentley's quick-ship program. This program is designed for maximum flexibility and expedited delivery to the client. Redux Deux is available in 12 colorways in 18 in x 36 in and 24 in x 24 in AFIRMA II™ Hardback Tile, NexStep® Cushion Tile, and LuxFelt™ Cushion Tile. Orders of 1500 square yards or less will be ready to ship within 10 business days of order. For orders exceeding 1500 square yards, please contact our Customer Care Concierge for availability.

9 in x 36 in Tile option and AFFIX™ Hardback Tile backing are excluded from the Fast Track program.

The printed images may not be an accurate reproduction of the product's actual colorways. We strive to offer an authentic representation, but images may vary according to press run and location lighting. These images are intended as a guide only. If you would like a sample of this product, please call Customer Care at 800.423.4709.

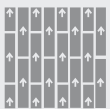
Bentley's carpet products are manufactured in our California mill, a LEED Existing Buildings: Operations and Maintenance Gold certified facility. Product Certifications and Declarations can be found under the Sustainability section of our website. For more information, including additional backing options, detailed specifications, and warranties, please visit bentleymills.com.



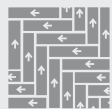
REDUX DEUX 6RET4, FIXER UPPER 403773, 18 IN X 36 IN - HERRINGBONE

Recommended Carpet Tile Installation Methods

9 in x 36 in



Ashlar

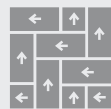


Herringbone

18 in x 36 in



Brick



Herringbone

24 in x 24 in



Brick



Quarter Turn



Random

Carpet specifications and components are subject to normal manufacturing tolerances and may change without notice. Product warranted in accordance with the terms and conditions of Bentley's standard printed warranty in effect at time product is sold. All other warranties, including without limitation any implied warranties of merchantability or fitness for a particular purpose, are hereby disclaimed. Made in USA. Warning: unauthorized reproduction of this carpet design constitutes copyright infringement. ©2022 Bentley Mills, Inc.

Need additional samples or information? 800.423.4709 | bentleymills.com

(BK-CP-11.22)

BENTLEY

BENTLEY®

800.423.4709 | BENTLEYMILLS.COM

14641 EAST DON JULIAN ROAD, CITY OF INDUSTRY, CALIFORNIA 91746

FROM HERITAGE CARPETS IN NEW ZEALAND

+64 (9) 3620425