

Heritage Carpets

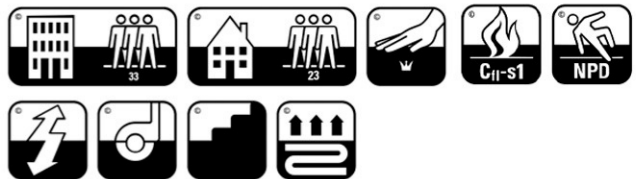
NZ

Owned & Operated

EST. 2007



NORDIC LIVING 'silent bac'



TECHNICAL ASPECT

Construction : Woven Loop Pile

Composition: 100% PA 6.6

Secondary Backing: Felt

Stitches per m²: Ca. 168.000/m²

Pile Height: Ca. 2,80mm

Total Height: Ca. 4,50mm

Pile Weight: Ca. 415g/m²

Total Weight: Ca. 2,150g/m²

Roll Width: 400cm

Use: Heavy Commerical

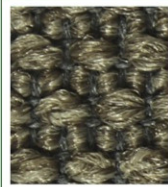
NORDIC LIVING



377150



377200



377250



377300



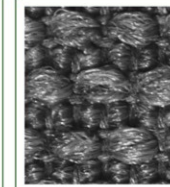
377320



377340



377350



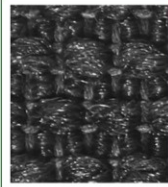
377370



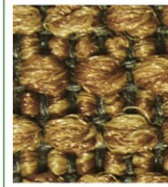
377380



377390



377395



377480



377600



377680



377760



377780



377880