



**BENTLEY®**

EXPO HALL, GALLERY HOP, AND POP-UP SHOP

DAYTRIPPER COLLECTION



**BENTLEY**



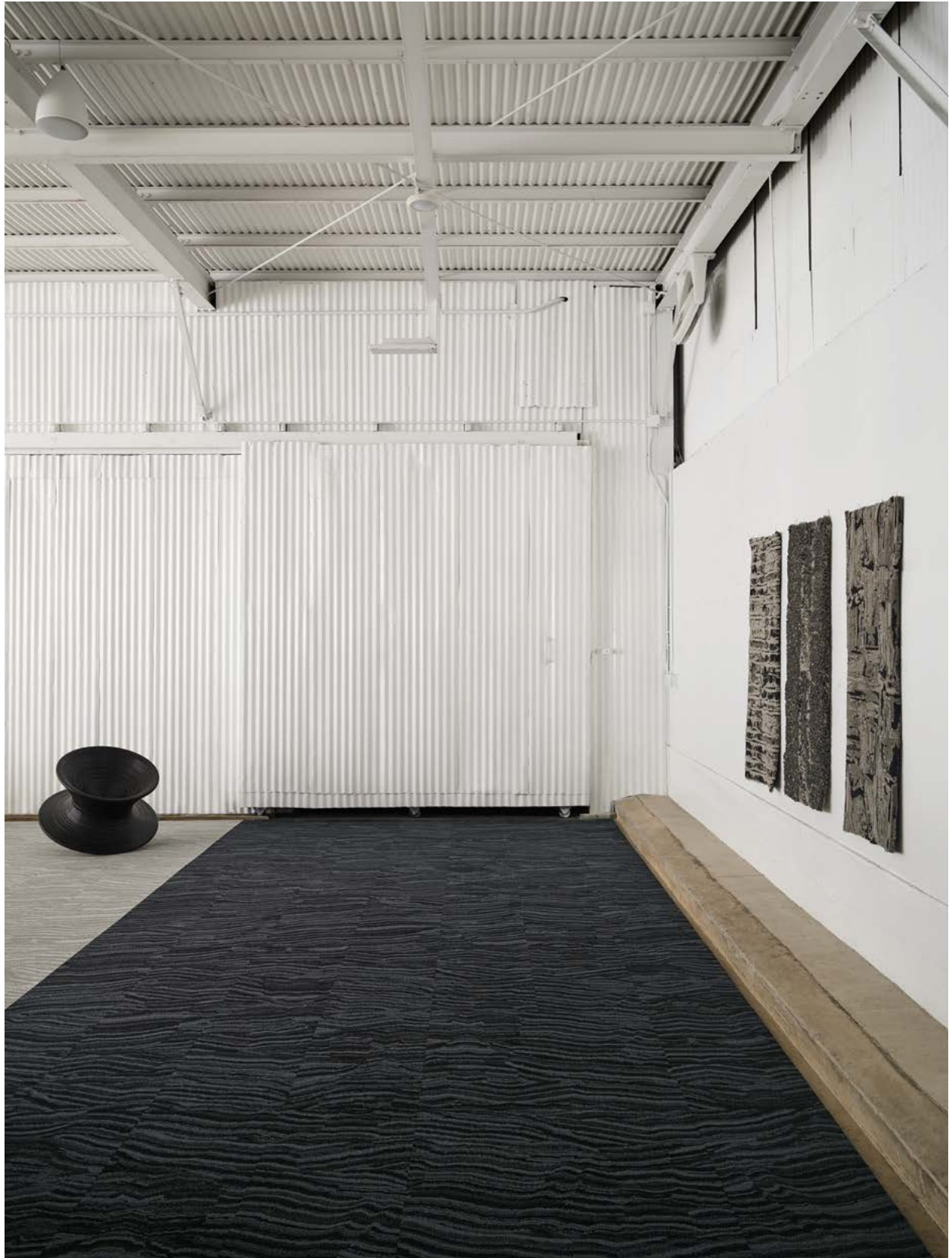
## Expo Hall, Gallery Hop, and Pop-Up Shop



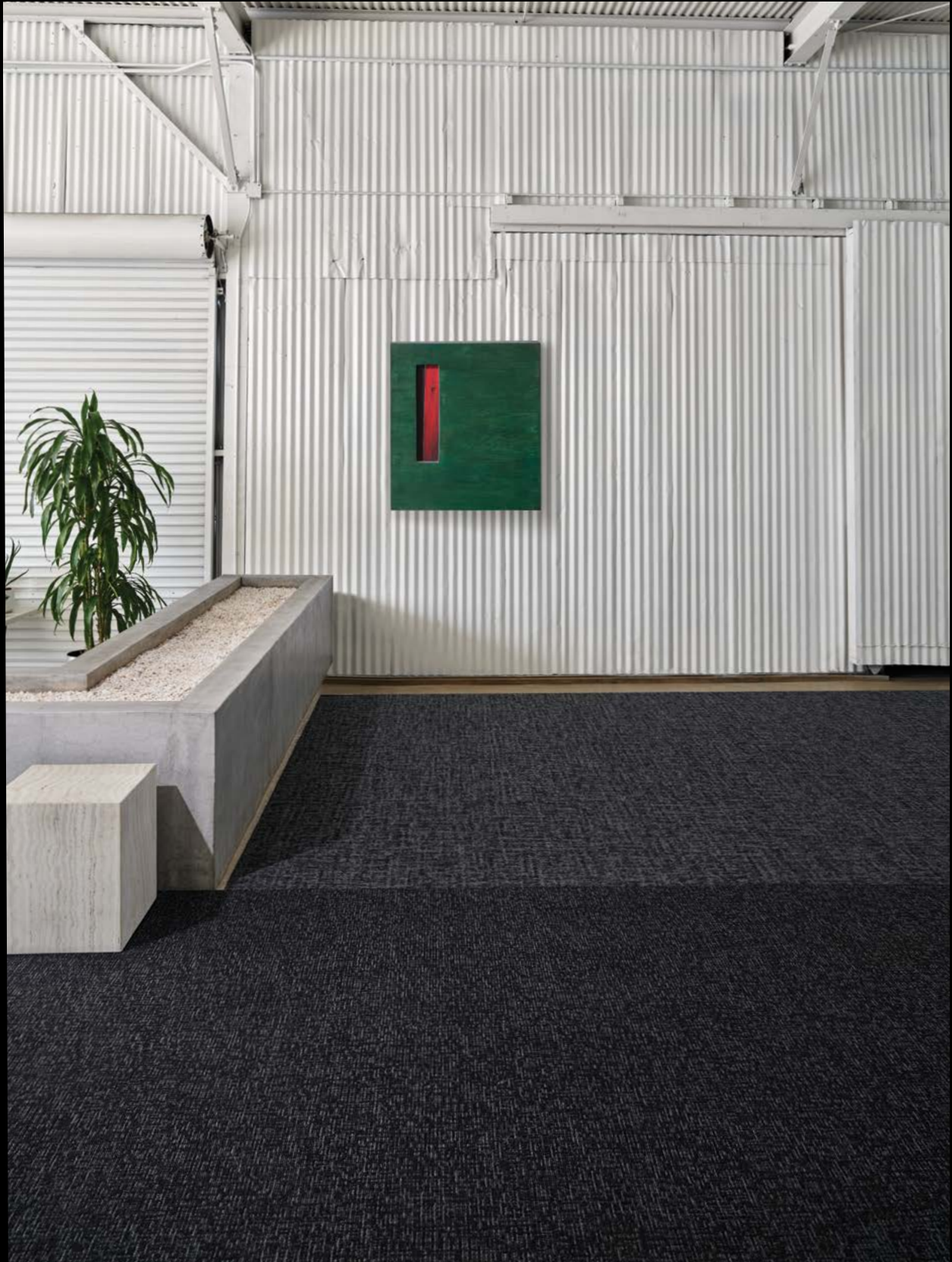
Ahhhh, to be swept away for hours into the realm of the creative experience: seeing art, wandering city streets of design festivals, seeking out pop-ups, happenings and installations.

For artists and designers, this is superfood. This is not work. This is life. For everyone, this is preserving and sharing history, opening hearts and eyes to past and present culture, witnessing creative innovation, and invoking possibility.

Expo Hall is reminiscent of the marble architecture, ancient and modern, that often houses our greatest museums. Gallery Hop is inspired by artistic mark-making, painterly brush strokes and smudge techniques blending hues. Pop-Up Shop reflects the map of the city coming alive when alleys, courtyards and forgotten storefronts open to host new ideas, artworks, and designs for contemporary living. The Daytripper Collection is composed of luscious constructions in 12 colorways, each with depth and shimmer in unique scales and proportions.



EXPO HALL™ 6AEH20, POSTCARDS 400074 AND WALKING MAP 400077, 18 IN X 36 IN - MONOLITHIC

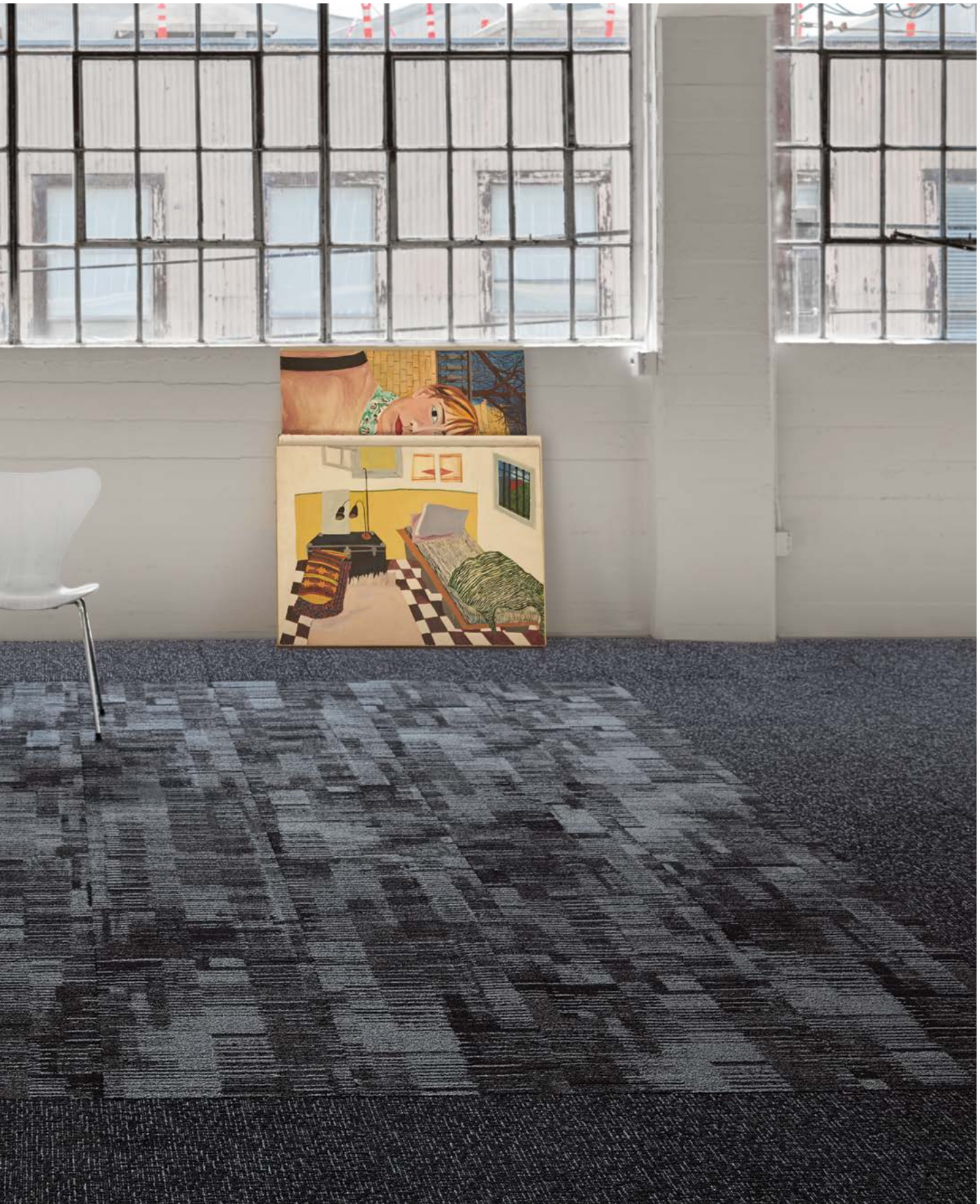


GALLERY HOP™ 6AGH20, WALKING MAP 400077, 18 IN X 36 IN - MONOLITHIC (TOP),  
FREE DAY™ 6AFDT4, WALKING MAP 400077, 18 IN X 36 IN - MONOLITHIC (BOTTOM)



POP-UP SHOP™ 6APP20, WALKING MAP 400077, 18 IN X 36 IN - MONOLITHIC (INSET)  
FREE DAY 6AFDT4, WALKING MAP 400077, 18 IN X 36 IN - MONOLITHIC (BORDER)







POP-UP SHOP 6APP20, POSTCARDS 400074, 18 IN X 36 IN - BRICK



**GALLERY HOP 6AGH20, POSTCARDS 400074, 24 IN X 24 IN - MONOLITHIC**



EXPO HALL 6AEH20, POSTCARDS 400074, 18 IN X 36 IN - MONOLITHIC (LEFT)  
FREE DAY 6AFDT4, POSTCARDS 400074, 18 IN X 36 IN - MONOLITHIC (RIGHT)





POP-UP SHOP 6APP20, DISTRICT 400079, 24 IN X 24 IN - MONOLITHIC

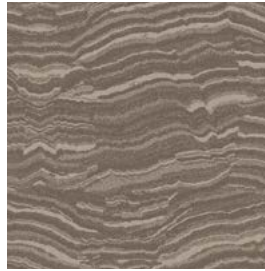


GALLERY HOP 6AGH20, DISTRICT 400079, 24 IN X 24 IN - MONOLITHIC (LEFT)  
EXPO HALL 6AEH20, FRESH EYES 400072, 24 IN X 24 IN - ASHLAR (RIGHT)

EXPO HALL™



Ticket Stubs 400070



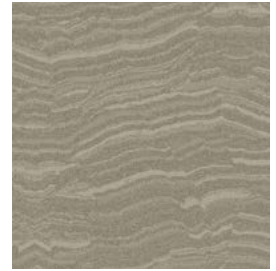
Journal 400071



Fresh Eyes 400072



Planner 400073



Postcards 400074



Sneakers 400075



Tote Bag 400076



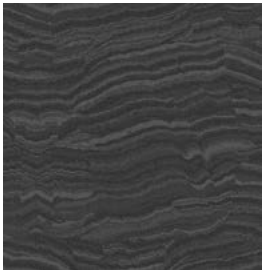
Walking Map 400077



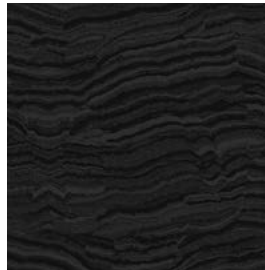
Genre 400078



District 400079



Tour Guide 400080



Metro Card 400081

**Style Number** 6AEH20  
**Product Construction** Tufted Textured Loop  
**Fiber** Bentley Premium™ Nylon  
**Dye Method** Solution Dyed

For complete product specifications, visit [bentleymills.com](http://bentleymills.com)

**PVC-Free Backing Options**  
 AFIRMA II™ Hardback Tile  
 AFFIX™ Hardback Tile  
 LuxFelt™ Cushion Tile  
 NexStep® Cushion Tile  
 High PerformancePC Broadloom

**Size Options**  
 18 in x 36 in, 24 in x 24 in  
 18 in x 36 in, 24 in x 24 in  
 18 in x 36 in, 24 in x 24 in  
 18 in x 36 in, 24 in x 24 in  
 12 ft

Recommended Carpet Tile Installation Methods - Expo Hall

18 in x 36 in



Ashlar



Brick



Monolithic

24 in x 24 in



Ashlar



Brick



Monolithic



CE Mark excludes AFFIX™ Hardback Tile.



GALLERY HOP™



Ticket Stubs 400070



Journal 400071



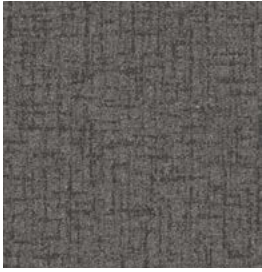
Fresh Eyes 400072



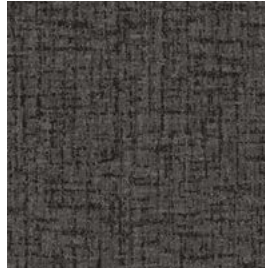
Planner 400073



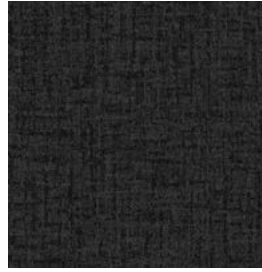
Postcards 400074



Sneakers 400075



Tote Bag 400076



Walking Map 400077



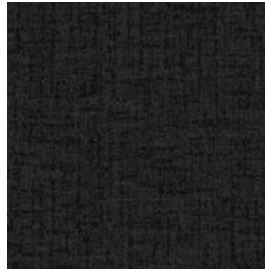
Genre 400078



District 400079



Tour Guide 400080



Metro Card 400081

**Style Number** 6AGH20  
**Product Construction** Tufted Textured Loop  
**Fiber** Bentley Premium™ Nylon  
**Dye Method** Solution Dyed

For complete product specifications, visit [bentleymills.com](http://bentleymills.com)

**PVC-Free Backing Options**  
 AFIRMA II™ Hardback Tile  
 AFFIX™ Hardback Tile  
 LuxFelt™ Cushion Tile  
 NexStep® Cushion Tile  
 EliteFlex™ 6 ft Cushion  
 High PerformancePC Broadloom

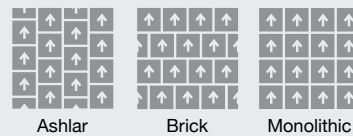
**Size Options**  
 18 in x 36 in, 24 in x 24 in  
 18 in x 36 in, 24 in x 24 in  
 18 in x 36 in, 24 in x 24 in  
 18 in x 36 in, 24 in x 24 in  
 6 ft  
 12 ft

Recommended Carpet Tile Installation Methods - Gallery Hop

18 in x 36 in



24 in x 24 in



POP-UP SHOP™



Ticket Stubs 400070



Journal 400071



Fresh Eyes 400072



Planner 400073



Postcards 400074



Sneakers 400075



Tote Bag 400076



Walking Map 400077



Genre 400078



District 400079



Tour Guide 400080



Metro Card 400081

**Style Number** 6APP20  
**Product Construction** Tufted Textured Loop  
**Fiber** Bentley Premium™ Nylon  
**Dye Method** Solution Dyed

For complete product specifications, visit [bentleymills.com](http://bentleymills.com)

**PVC-Free Backing Options**

A FIRMA II™ Hardback Tile  
 AFFIX™ Hardback Tile  
 LuxFelt™ Cushion Tile  
 NexStep® Cushion Tile  
 EliteFlex™ 6 ft Cushion  
 High PerformancePC Broadloom

**Size Options**

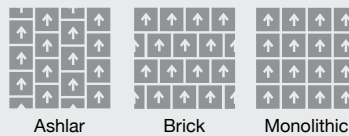
18 in x 36 in, 24 in x 24 in  
 18 in x 36 in, 24 in x 24 in  
 18 in x 36 in, 24 in x 24 in  
 18 in x 36 in, 24 in x 24 in  
 6 ft  
 12 ft

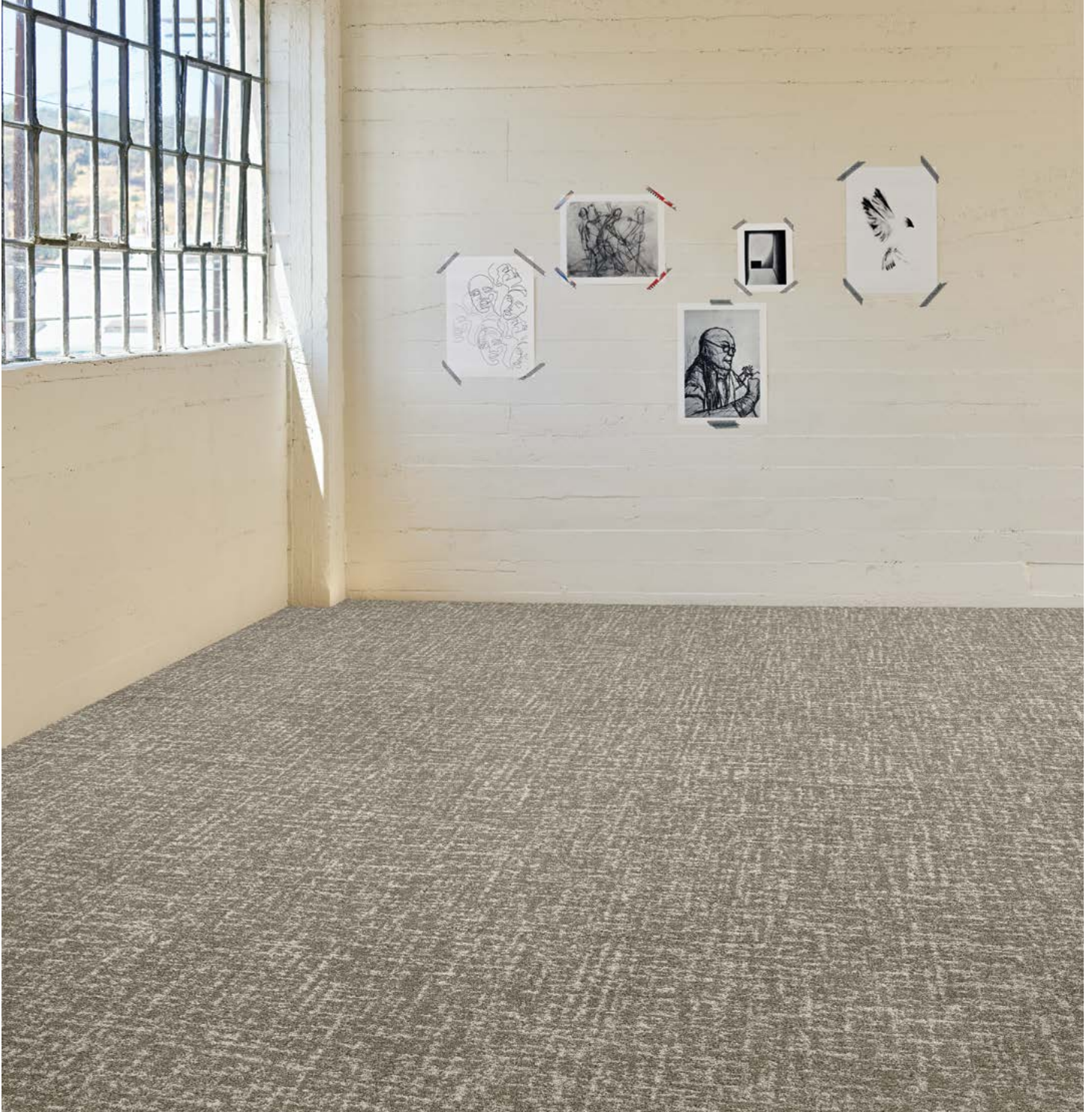
Recommended Carpet Tile Installation Methods - Pop-Up Shop

18 in x 36 in



24 in x 24 in





GALLERY HOP 6AGH20, JOURNAL 400071, 12 FT - BROADLOOM

Bentley's carpet products are manufactured in our California mill, a LEED Existing Buildings: Operations and Maintenance Gold certified facility. Product Certifications and Declarations can be found under the Sustainability section of our website. For more information, including additional backing options, detailed specifications, and warranties, please visit [bentleymills.com](https://www.bentleymills.com).

Carpet specifications and components are subject to normal manufacturing tolerances and may change without notice. Product warranted in accordance with the terms and conditions of Bentley's standard printed warranty in effect at time product is sold. All other warranties, including without limitation any implied warranties of merchantability or fitness for a particular purpose, are hereby disclaimed. Made in USA. Warning: unauthorized reproduction of this carpet design constitutes copyright infringement. ©2022 Bentley Mills, Inc.

**Need additional samples or information?** 800.423.4709 | [bentleymills.com](https://www.bentleymills.com)

(BK-CP-0722)

**BENTLEY®**

[www.heritagecarpets.co.nz](http://www.heritagecarpets.co.nz)

**BENTLEY®**

800.423.4709 | BENTLEYMILLS.COM

14641 EAST DON JULIAN ROAD, CITY OF INDUSTRY, CALIFORNIA 91746