

LIGHT & EARTHY TONES



611 Pear

1 ☆



538 Silver Birch

□ 2 ☆



530 Heather

□ 2 ☆



555 Wild Rice

□ 2 ☆



571 Mushroom

□ 2 ☆



712 Taupe

□ 2 ☆



568 Jonquille

□ 1 ☆



532 Sisal

□ 2 ☆



713 Saddle

□ 3 ☆



512 Dapple Grey

□ 3 ☆



590 Coffee Bean

□ 3 ☆



714 Dark Chocolate

□ 3 ☆

All colours are available for roll & custom rugs.



ROLL



RUGS

Colours available in plank & tile where you see these symbols.



PLANK



TILE

Colours are star rated for their suitability to light, medium & heavy foot traffic.



1 ☆ LIGHT
2 ☆ MEDIUM
3 ☆ HEAVY

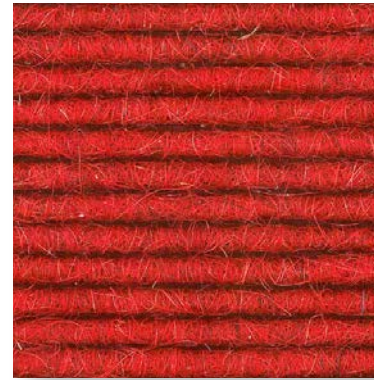
REDS & WARM TONES



559 Burnt Orange □ ▮ 2 ☆



585 Orange Squash □ ▮ 1 ☆



706 Chilli □ 2 ☆



524 Russett □ ▮ 3 ☆



562 Rose Sunset □ ▮ 3 ☆



593 Diplomat Red □ 2 ☆



584 Blackberry □ ▮ 3 ☆



581 Deep Purple □ ▮ 3 ☆



577 Burgundy □ 3 ☆



708 Indigo □ 3 ☆



707 Magenta □ 2 ☆



709 Aubergine 3 ☆

All colours are available for roll & custom rugs.



ROLL



RUGS

Colours available in plank & tile where you see these symbols.



PLANK



TILE

Colours are star rated for their suitability to light, medium & heavy foot traffic.



1 ☆ LIGHT
2 ☆ MEDIUM
3 ☆ HEAVY

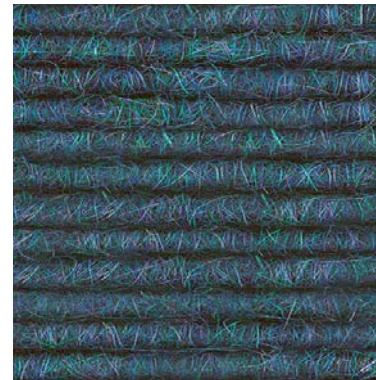
BLUES & COOL TONES



704 Aegean □ 2☆



567 Lagoon Blue □ 3☆



576 Aquamarine □ 3☆



592 Purple □ 1☆



520 Damson □ 1☆



575 Cornflower □ 3☆



516 Brilliant Blue □ 2☆



514 Bilberry □ 2☆



705 Freshwater □ 3☆



527 Dried Lavender □ 2☆



542 Night Sky □ 3☆



589 Amethyst 3☆

All colours are available for roll & custom rugs.

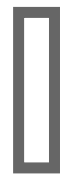


ROLL



RUGS

Colours available in plank & tile where you see these symbols.



PLANK



TILE

Colours are star rated for their suitability to light, medium & heavy foot traffic.



1☆ LIGHT
2☆ MEDIUM
3☆ HEAVY

GREEN & NATURAL TONES



523 Zinc

□ ▮ 3 ☆



579 Petrol

□ 2 ☆



558 Peacock

□ ▮ 3 ☆



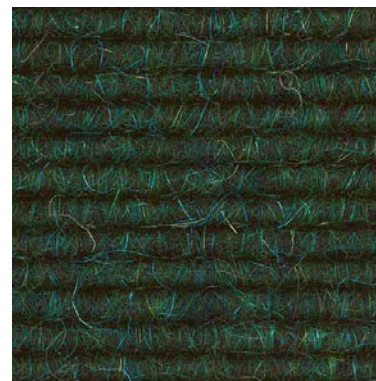
519 Sage

□ ▮ 2 ☆



566 Lichen

□ ▮ 3 ☆



565 Evergreen

□ ▮ 3 ☆



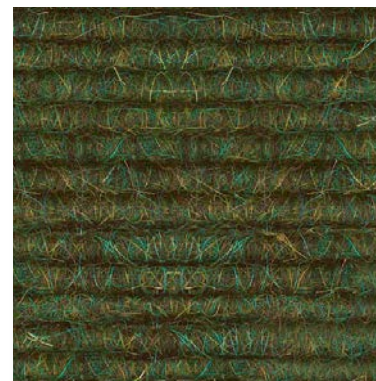
528 Apple

□ 2 ☆



580 Lettuce Leaf

□ ▮ 1 ☆



574 Autumn Fern

□ 3 ☆



710 Charcoal

□ 3 ☆



699 Olive Tang

□ 2 ☆



534 Anthracite

□ ▮ 3 ☆

All colours are available for roll & custom rugs.



ROLL



RUGS

Colours available in plank & tile where you see these symbols.



PLANK



TILE

Colours are star rated for their suitability to light, medium & heavy foot traffic.



1 ☆ LIGHT
2 ☆ MEDIUM
3 ☆ HEAVY

TREND PALETTE



640 Ice

1 ☆



515 Silver

□ □ 1 ☆



642 Thym

2 ☆



648 Fog

2 ☆



628 Caribbean

2 ☆



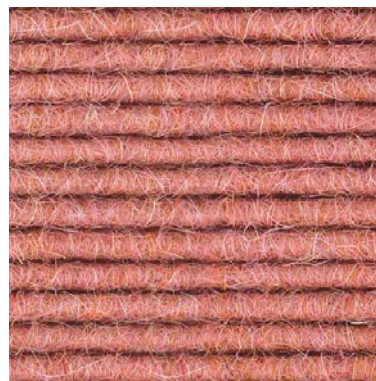
650 Basalt

2 ☆



613 Marzipan

1 ☆



588 Rose

□ □ 2 ☆



631 Lipstick

□ 2 ☆



602 Cashew

2 ☆



591 Salmon

□ □ 2 ☆



646 Powder

2 ☆

Trend colours are available for roll & custom rugs only.



ROLL



RUGS

Colours are star rated for their suitability to light, medium & heavy foot traffic.



1 ☆ LIGHT
2 ☆ MEDIUM
3 ☆ HEAVY

TECHNICAL SPECIFICATIONS



SPECIFICATIONS	TRETTFORD ROLL & RUG	TRETTFORD INTERLIFE TILE & PLANK
CONSTRUCTION: Carded fibres formed into a continuous corrugation.	Bonded with Phthalate Free PVC to a Hessian backing	Bonded with Phthalate Free PVC to a post consumer recycled PET backing
MATERIALS & COMPOSITION:	80% Goat Hair, 15% Nylon, 5% Viscose	70% Goat Hair, 30% Nylon
COLOUR DYES:	512 Dapple Grey, 538 Silver Birch and 587 Double Cream are manufactured using undyed goat hair. All other colours are dyed without bleaching.	
WARRANTIES:	Wear guarantee: BS EN1307:2005 Class 33 LC2 heavy commercial use. Lifetime anti-ravel / non-zipper guarantee.	
DIMENSIONS & WEIGHT: Length / Packing: Thickness: Weight:	2m wide Roll lengths will vary 7mm ca. 2.75kg/m ²	50 x 50cm tile, 100 x 25cm plank Tile: 5sqm per box Plank: 3sqm per box 8mm ca. 3.7kg/m ²
FLAMMABILITY:	BS 4790:1987 Mean burning radius: 25mm, Class: low BS EN ISO 11925:2002, BS EN ISO 9239 - 1: Euroclass Cfl-s1 (B1) Conclusion: Suitable for all commercial / contract installations including institutional, commercial and public buildings.	
THERMAL INSULATION: Thermal resistance:	(BS 4745:1971 / ISO 8302:1991) Test results confirm satisfactory thermal properties for underfloor heating.	
ELECTRICAL PROPERTIES / STATIC:	ISO 6356:2000 BS EN - 1.3kV BS EN 14041:2004: Classified as anti-static.	
DYNAMIC LOADING:	(BS 4052:1987) Thickness loss % after 1000 impacts: 13.33%	
DIMENSIONAL STABILITY:	(BS EN 986:2005) Dimensional stability test requirements: -0.2% - +0.2%	
COLOUR FASTNESS To light:	N/A Passed	
IMPACT SOUND INSULATION:	(BS 1006:1990) Colour change: 5-6, very slight to none.	
SOUND ABSORPTION:	(BS 2750:1980) (EN ISO 10140-1) c. 23dB c.24dB This carpet meets the requirements of the building regulations by a useful margin.	
MOTHPROOFING:	(EN ISO 354:2003) (EN ISO 11654:1997) Noise reduction coefficient: 0.21 (250-2,000 Hz) Sound absorption grade: 0.25 (125-4,000 Hz)	
CASTOR CHAIR PROTECTORS:	130 255 515 1025 2025 4075 125 250 500 1000 2000 4000 0.01 0.03 0.10 0.27 0.42 0.41 0.02 0.05 0.14 0.29 0.27 0.35	
COUNTRY OF MANUFACTURE:	(BS 4797:1972) (SIS 650220) tretford is moth-resistant to European standards.	
INSTALLATION:	(For appearance retention purposes) Recommended with 3☆ colours. Mandatory with 1☆ and 2☆ colours.	
SUSTAINABILITY:	Ireland Available in 48 classic colours Germany Available in 35 classic colours tretford cord carpet is a natural fibre product. Different production runs of the same product may therefore be subject to shade variation. This is not a defect or a manufacturing fault.	
	For installation guidelines, please refer to your tretford website in your country. Refers to rugs fully installed - no secondary backing.	

