

CONTEMPORARY



Anodised aluminium slimline headrail with snap headrail inserts



Anodised aluminium slimline headrail infill detail



Anodised aluminium slimline headrail corner detail



Continuous wall channels to all junctions



Adjustable anodised aluminium pedestal legs

Board: 18mm Laminex Structuralboard
 Colour: Stipple Seal
 Hardware: Satin Chrome Finish

Boards:

- 18mm Structural MR board

Contemporary Partition System Overview:

- Anodised aluminium adjustable pedestal mounted, overhead braced system
- Two adjustable pedestal legs per fascia for extra strength and partition rigidity
- Doors flush with fascia's when closed for seamless, clean finish
- Standard system height is 1800mm
- Anodised aluminium headrail with infills
- Continuous wall channels to all junctions

Edge Treatment:

- Laminex Structural MR board
 ≈ 2mm ABS edging, matching colour of panel face

Warranties:

- Board
 ≈ 18mm Laminex Structural MR board – 7 years
- Hardware – 2 years
- Installation – 2 years

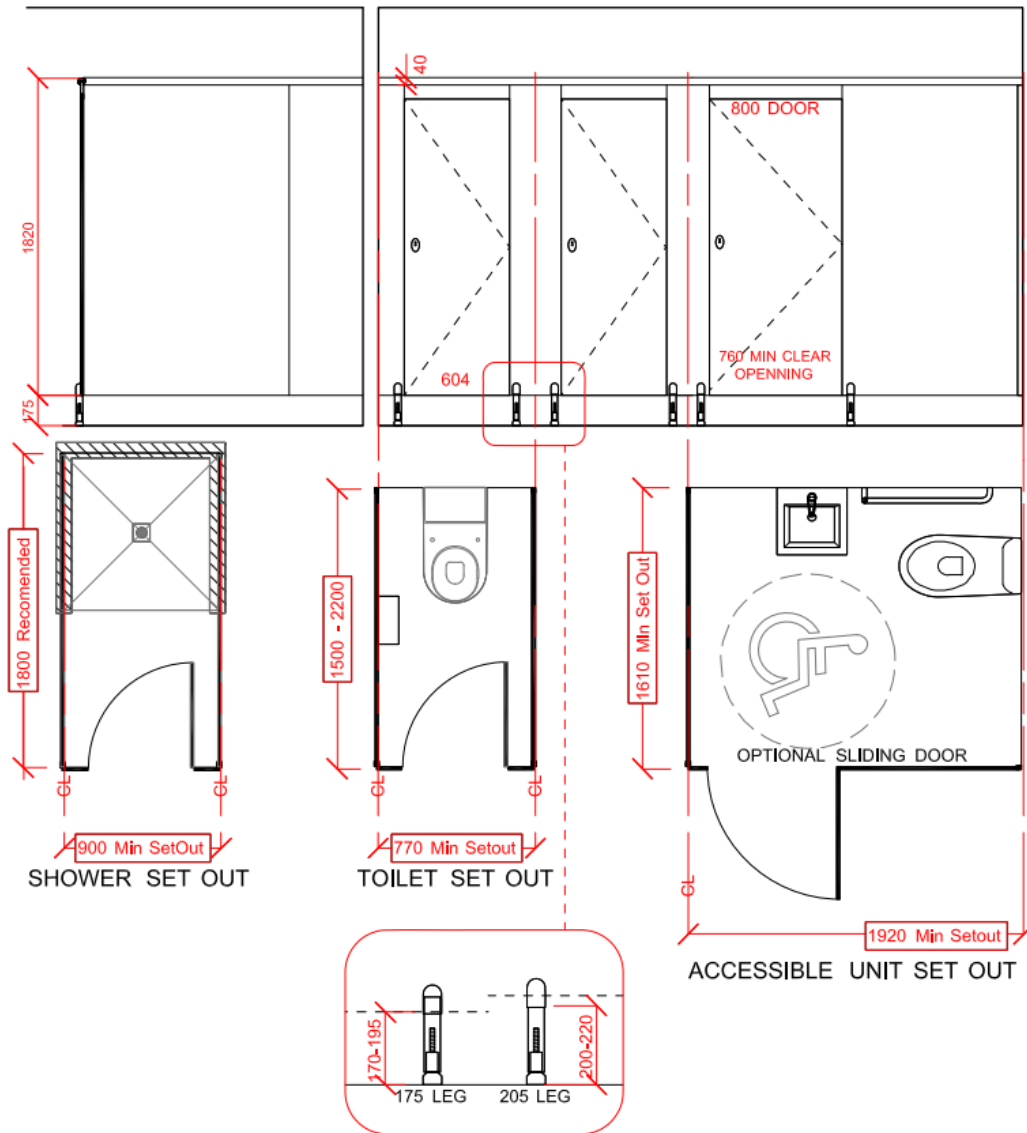
Features:	18mm Structural MR board
Group 3 Fire Rating	✓
Emergency lift off hinges	✓
Impact resistant	✓
Moisture resistant	✓
Panels are 1800mm wide, eliminating the need for joints in most cases	✓
Concealed fix hardware	✓
Stainless steel fixings	✓
Sliding door or open out door to comply with accessibility requirement available	✓
Powder coating to aluminium trim available optional extra	✓
CF2 Stainless Steel bullet style foot available optional extra	✓
Environmentally friendly, low emissions	✓
Uses :	
Dry areas / Toilet cubicles	✓

Updated February 2016

Full specification and additional technical data available on www.haleman.co.nz



TYPICAL DETAILS



DESIGN PATENTED HARDWARE



Concealed fix Wave lock with bumper



Concealed fix Avanti Indicator



Concealed fix Avanti emergency lift off gravity hinge



Concealed fix Wave coat hook



Optional CF2 Stainless Steel bullet style feet



Anodised aluminium slimline headrail corner detail

Updated February 2016

Full specification and additional technical data available on www.haleman.co.nz



HALE MANUFACTURING LTD
PARTITION AND WASHROOM SYSTEMS