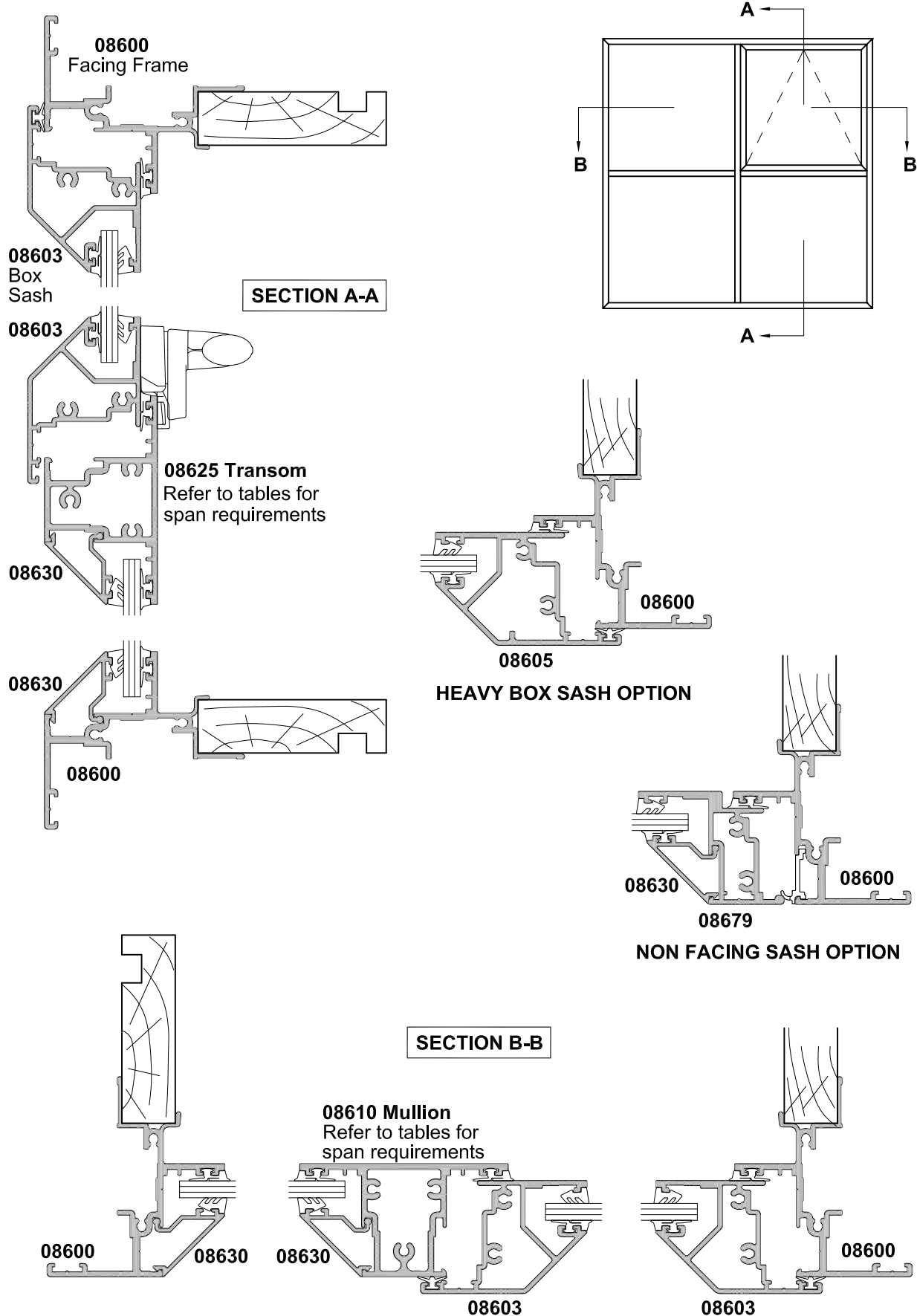


40MM WINDOW SERIES
F100FS FACING FRAME
AWNING WINDOW

CROSS SECTION

Date 01.06.11 Scale 1:2



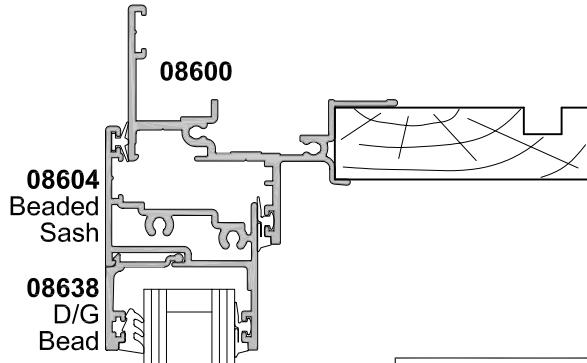


Cad Ref. FC4002-0

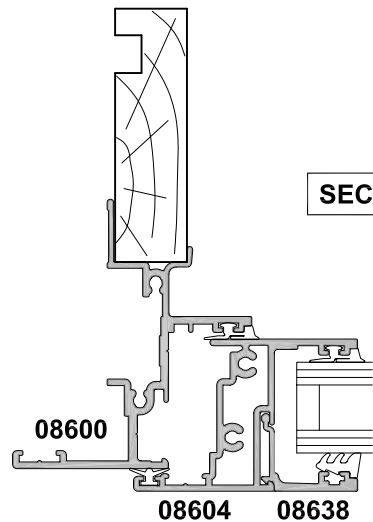
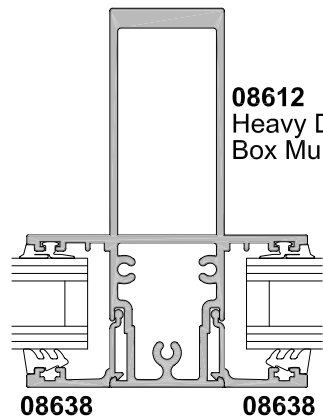
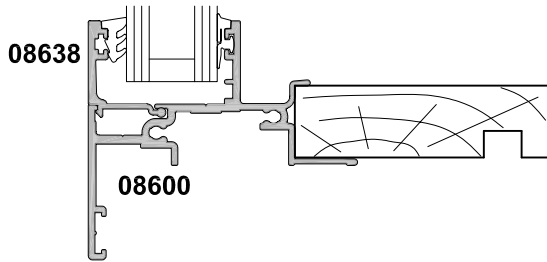
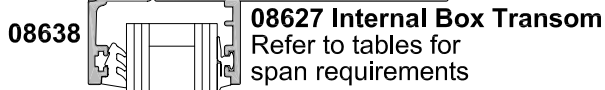
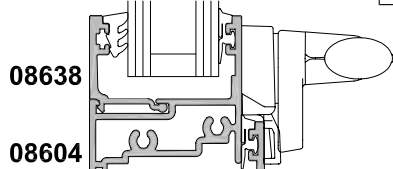
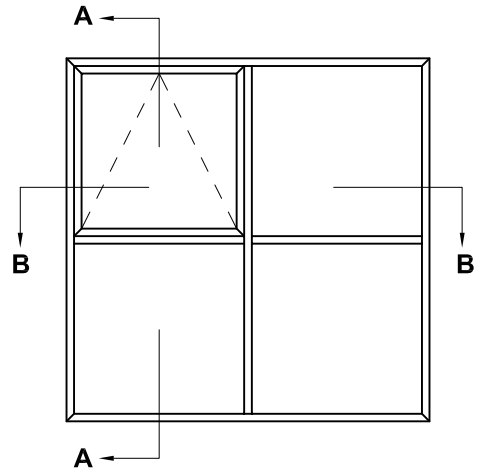
40MM WINDOW SERIES
F100FS FACING FRAME
AWNING WINDOW, DOUBLE GLAZED

CROSS SECTION

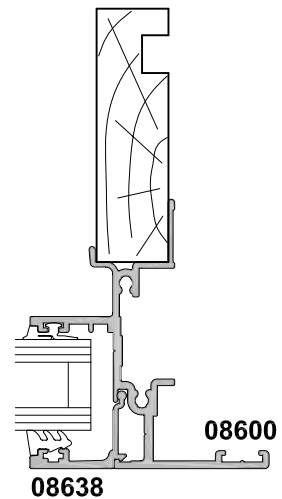
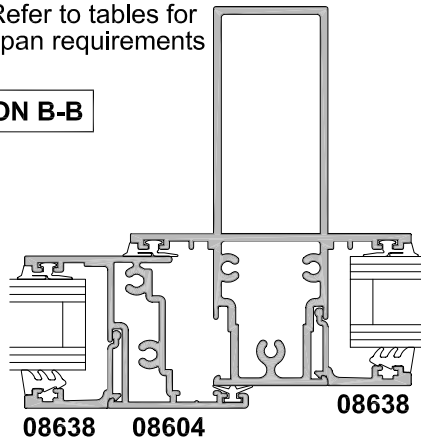
Date 01.11.09 Scale 1:2



SECTION A-A



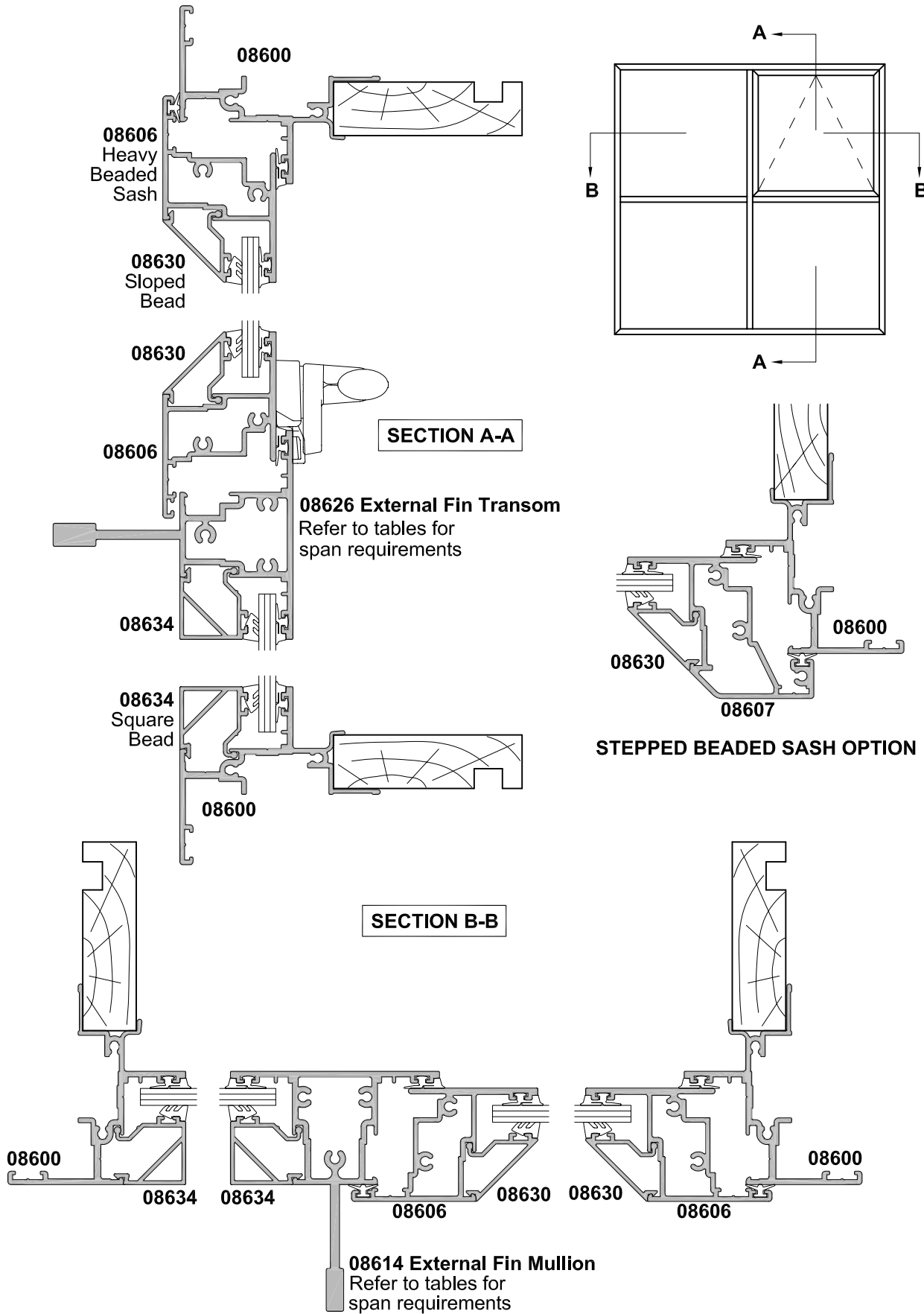
SECTION B-B



40MM WINDOW SERIES
F100FS FACING FRAME
HEAVY BEADED SASH OPTION

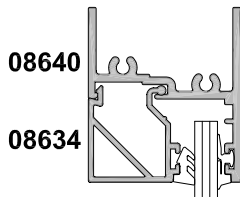
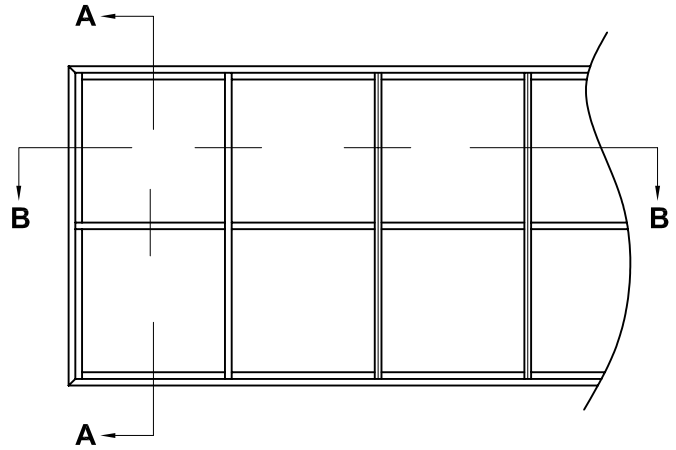
CROSS SECTION

Date 01.11.09 Scale 1:2

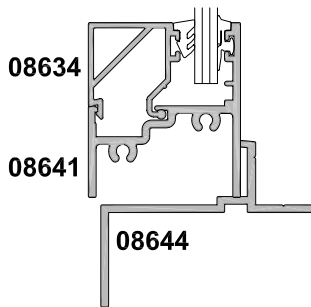
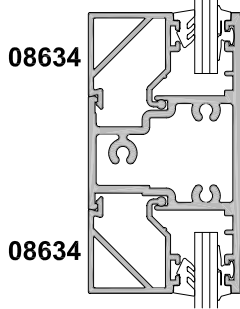


CROSS SECTION

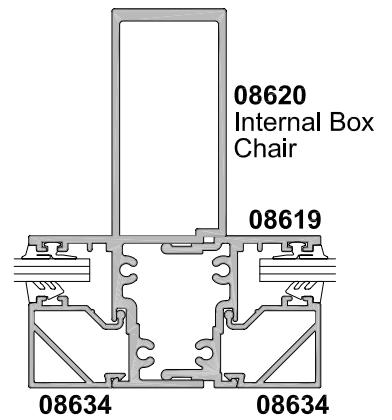
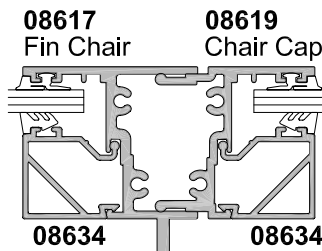
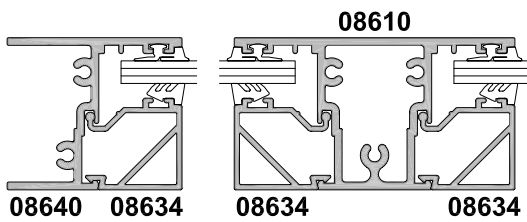
Date 01.11.09 Scale 1:2



SECTION A-A



SECTION B-B

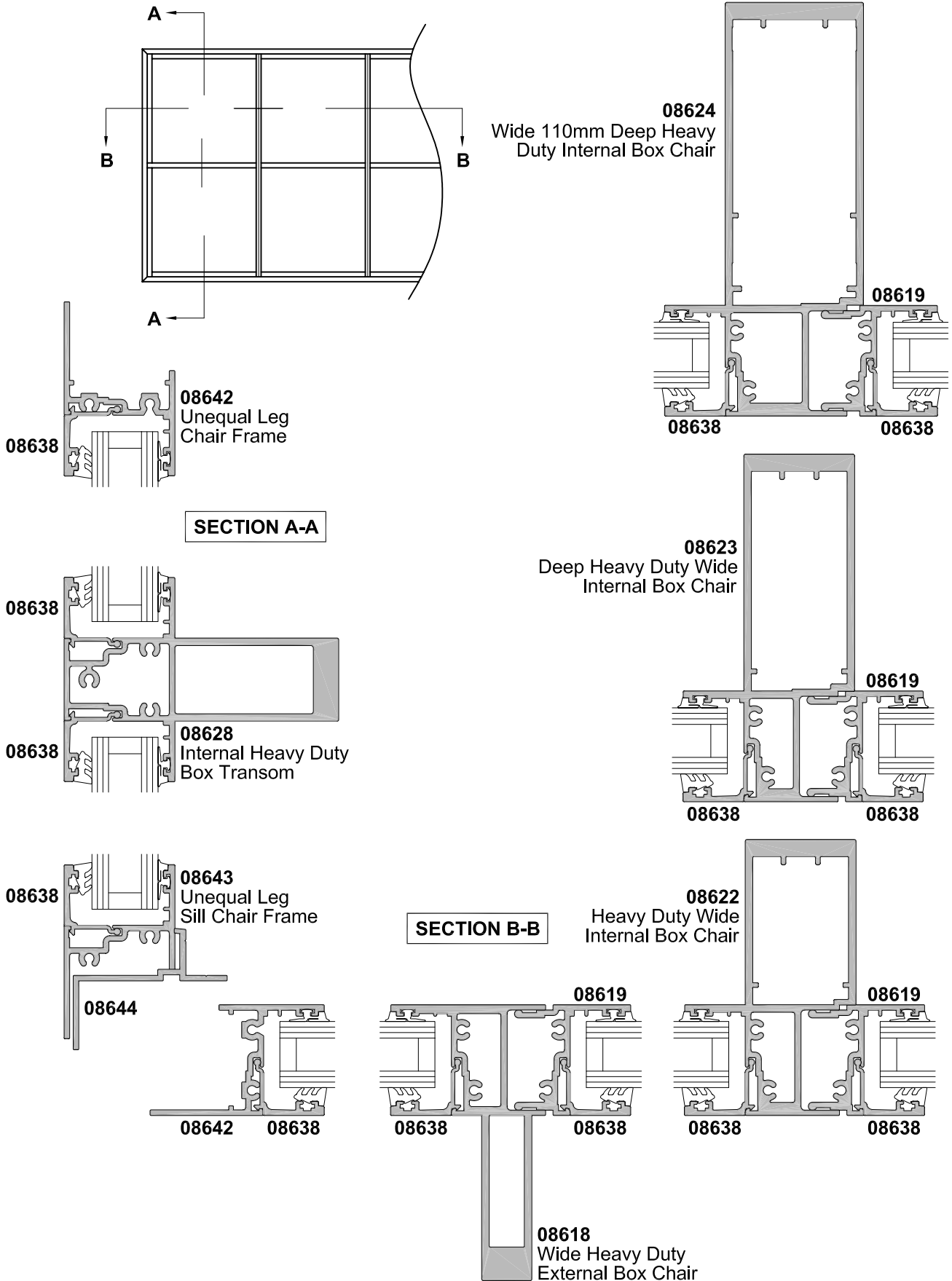


Refer to tables for span requirements

40MM WINDOW SERIES
F120FS STRIP WINDOW, DOUBLE GLAZED
SPLIT MULLION OPTIONS

CROSS SECTION

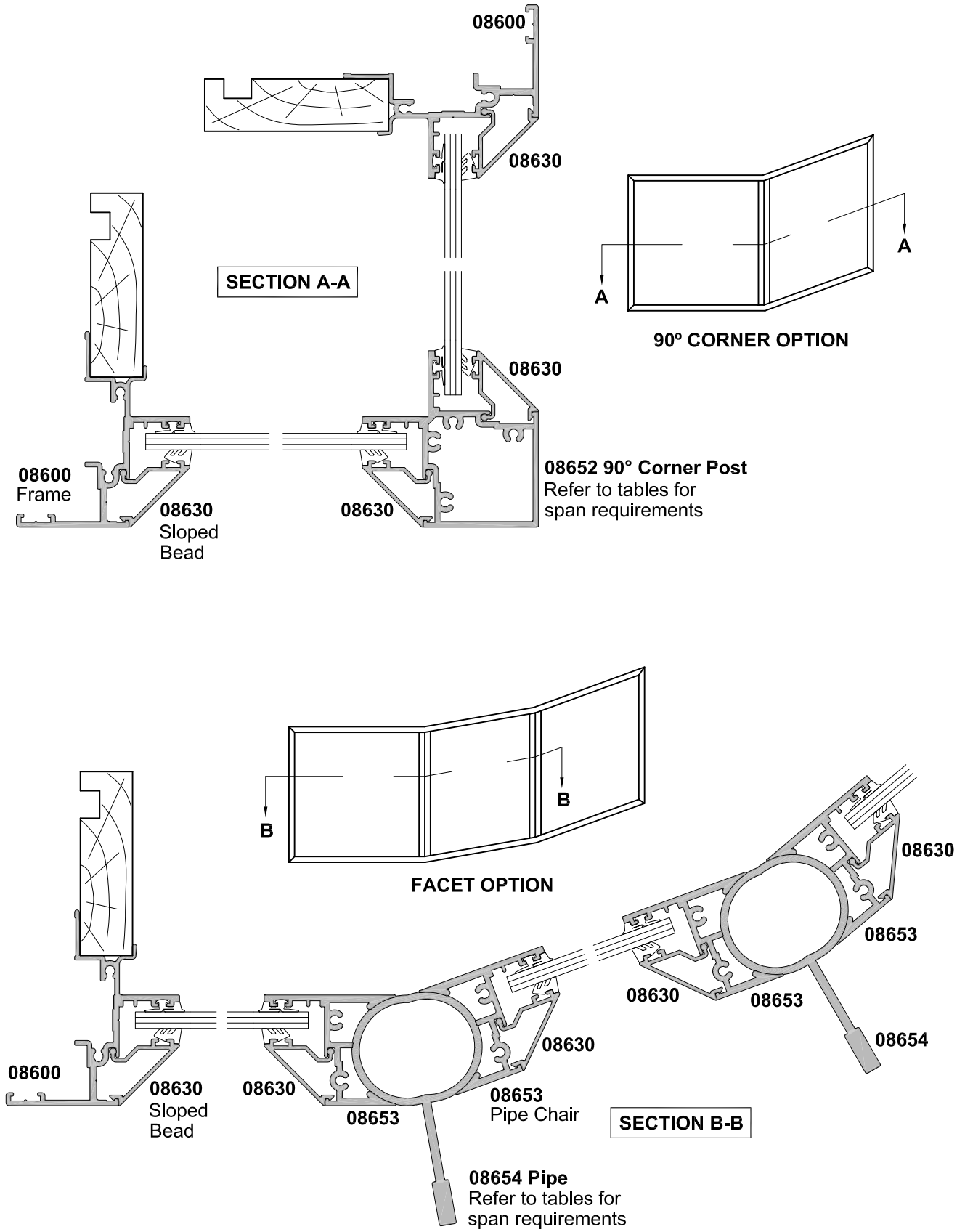
Date 01.11.09 Scale 1:2



40MM WINDOW SERIES
F100FS 90° CORNER WINDOW
FACET WINDOW

CROSS SECTION

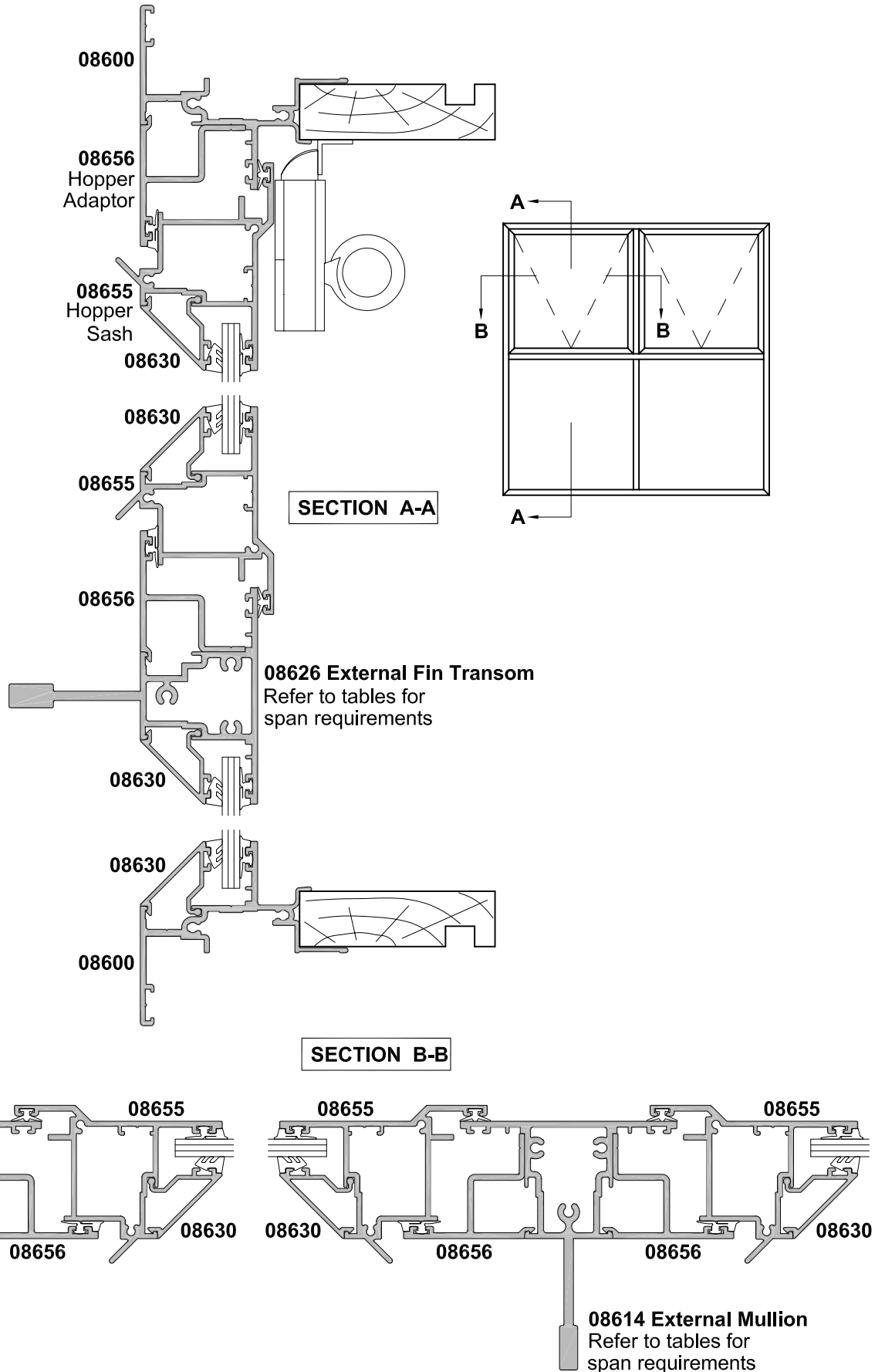
Date 01.11.09 Scale 1:2



40MM WINDOW SERIES
F100FS HOPPER WINDOW

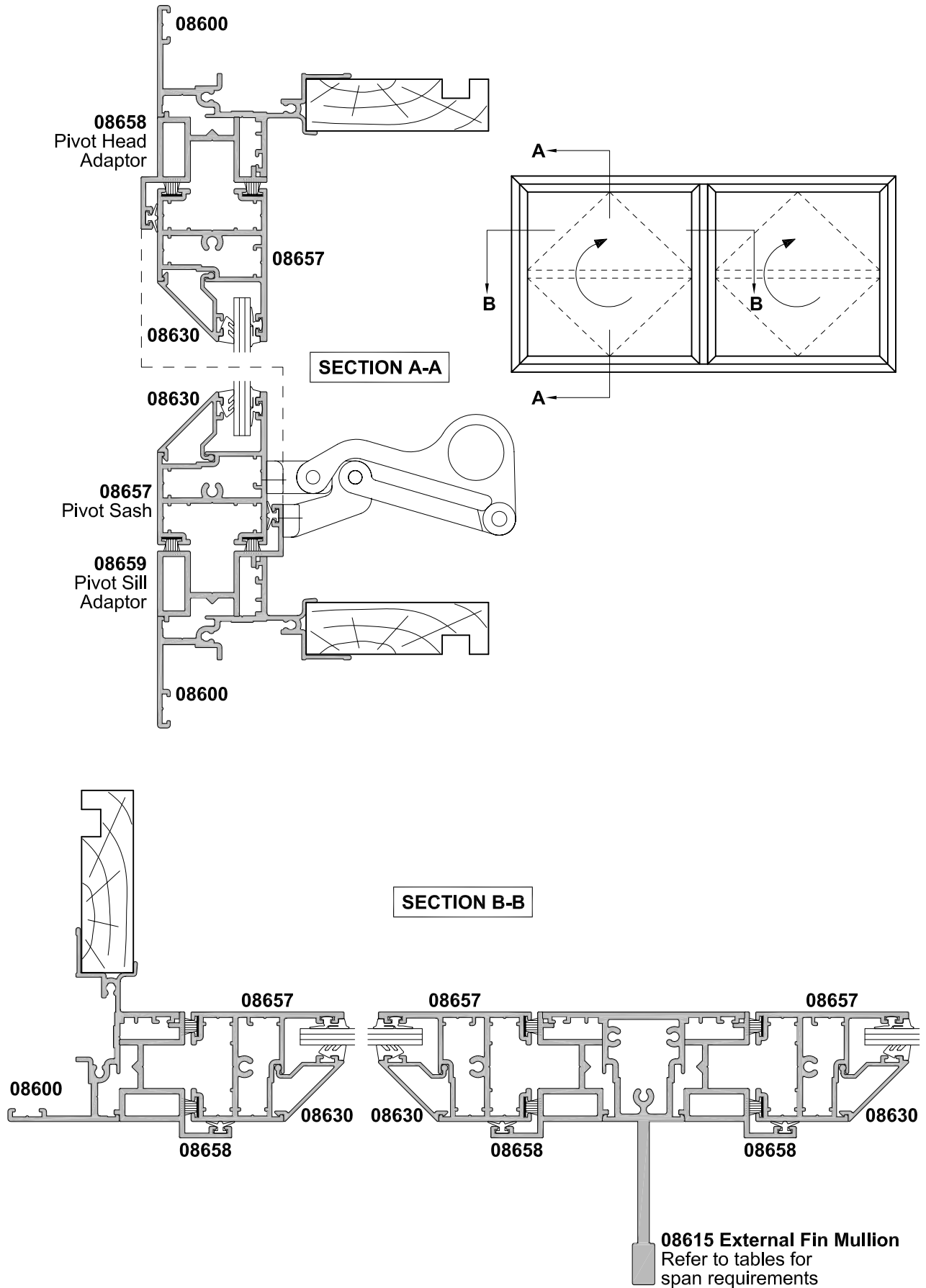
CROSS SECTION

Date 01.11.09 Scale 1:2



CROSS SECTION

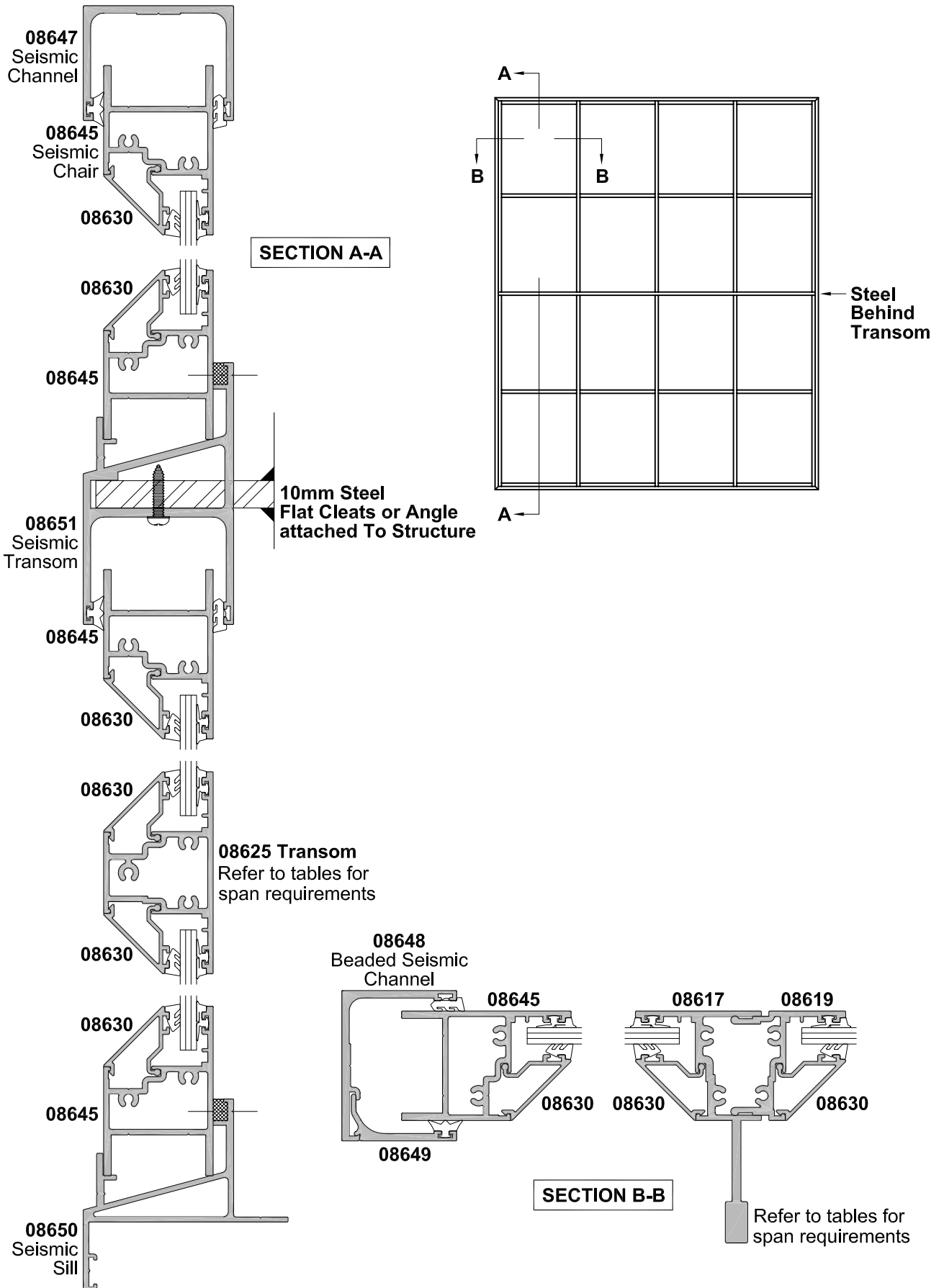
Date 01.11.09 Scale 1:2



**40MM WINDOW SERIES
F120FS SEISMIC FRAME**

CROSS SECTION

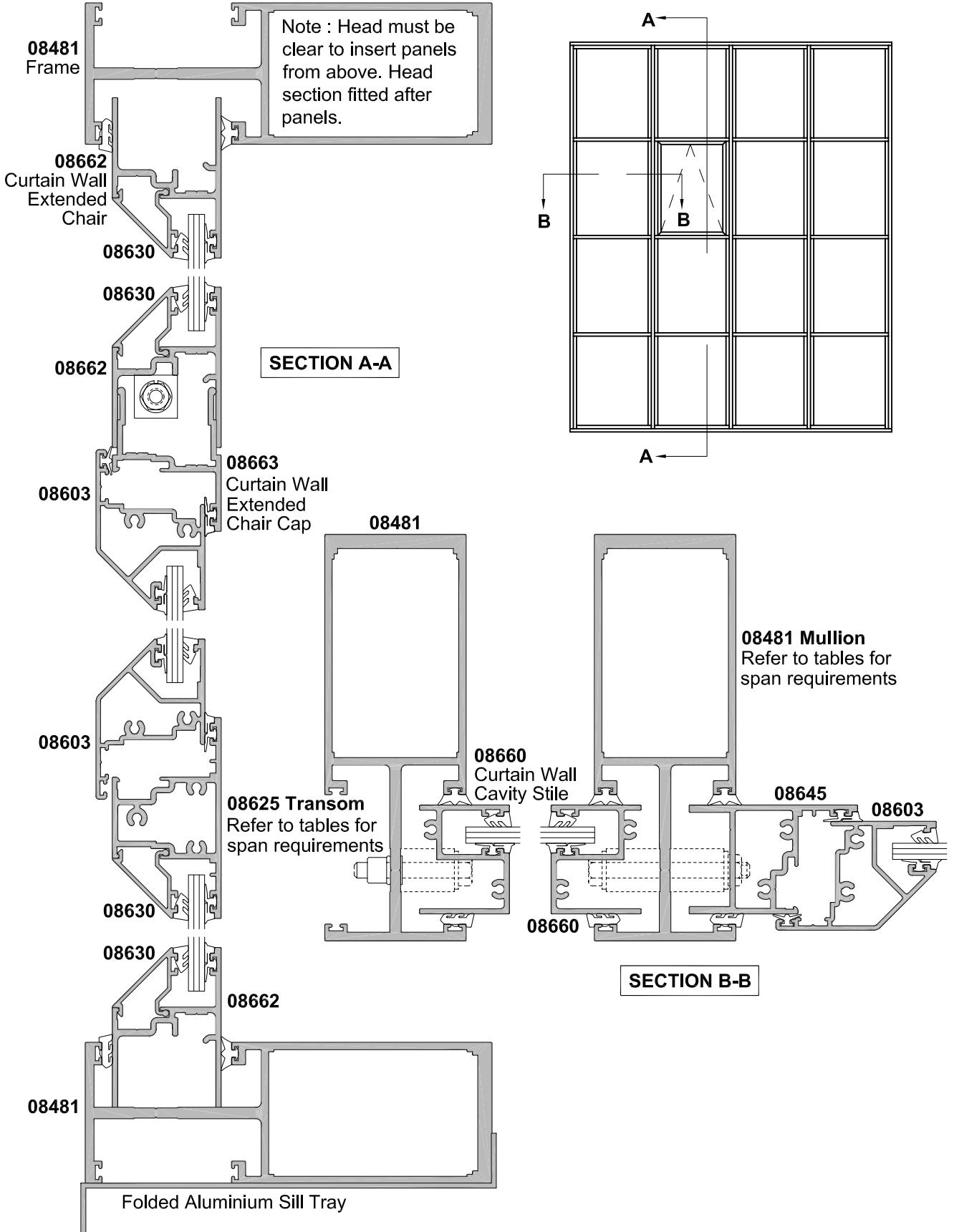
Date 01.11.09 Scale 1:2



**40MM WINDOW SERIES
F130FS CURTAIN WALL**

CROSS SECTION

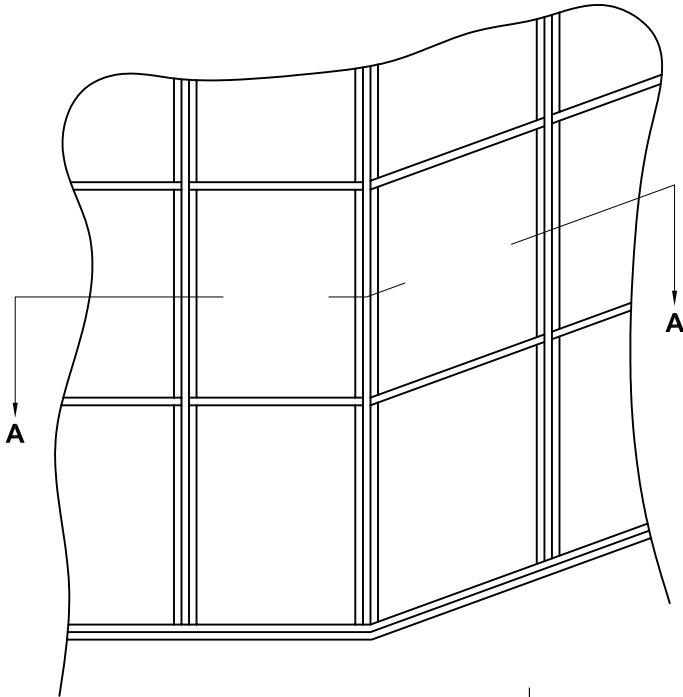
Date 01.11.09 Scale 1:2



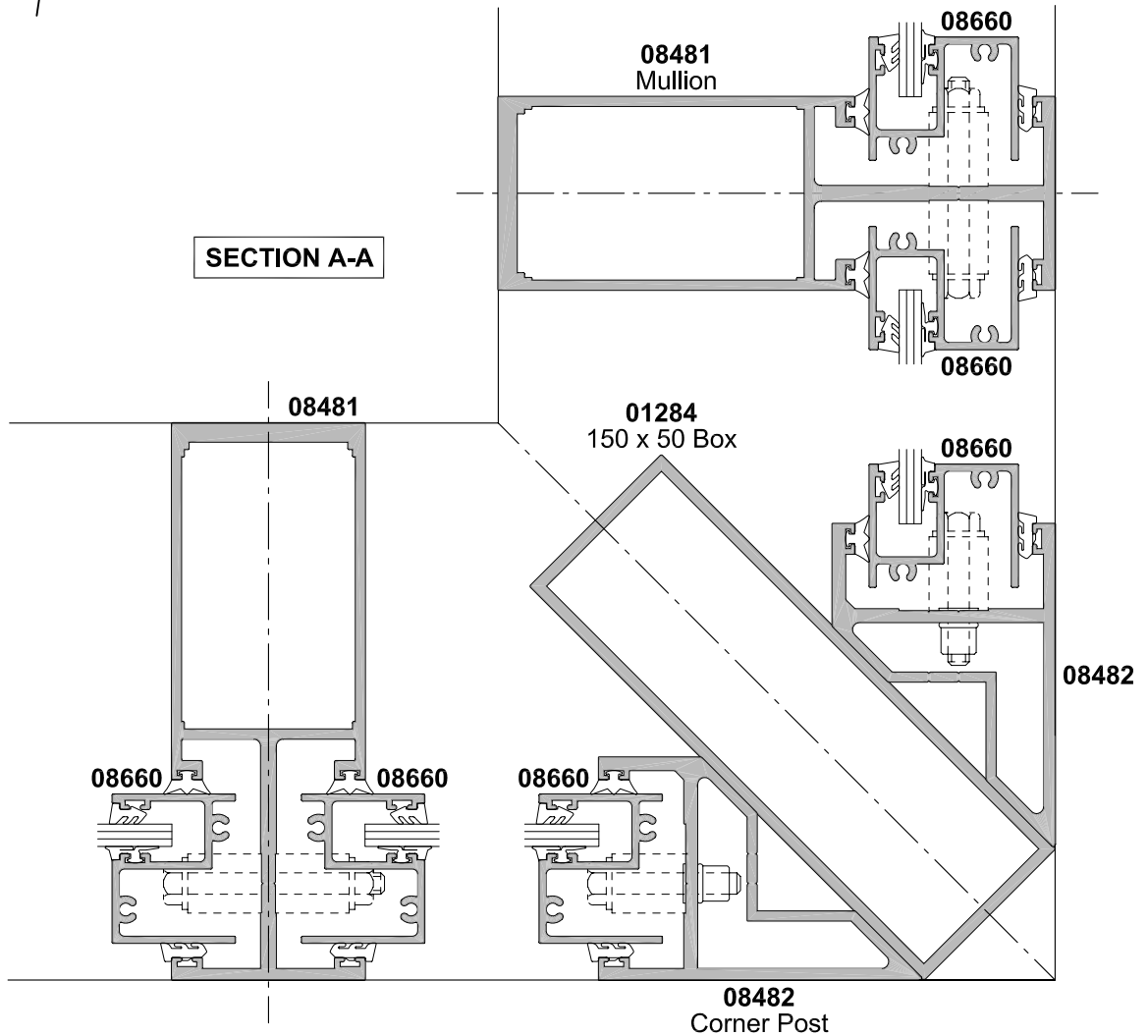
40MM WINDOW SERIES
F130FS CURTAIN WALL
EXTERNAL CORNER

CROSS SECTION

Date 01.11.09 Scale 1:2



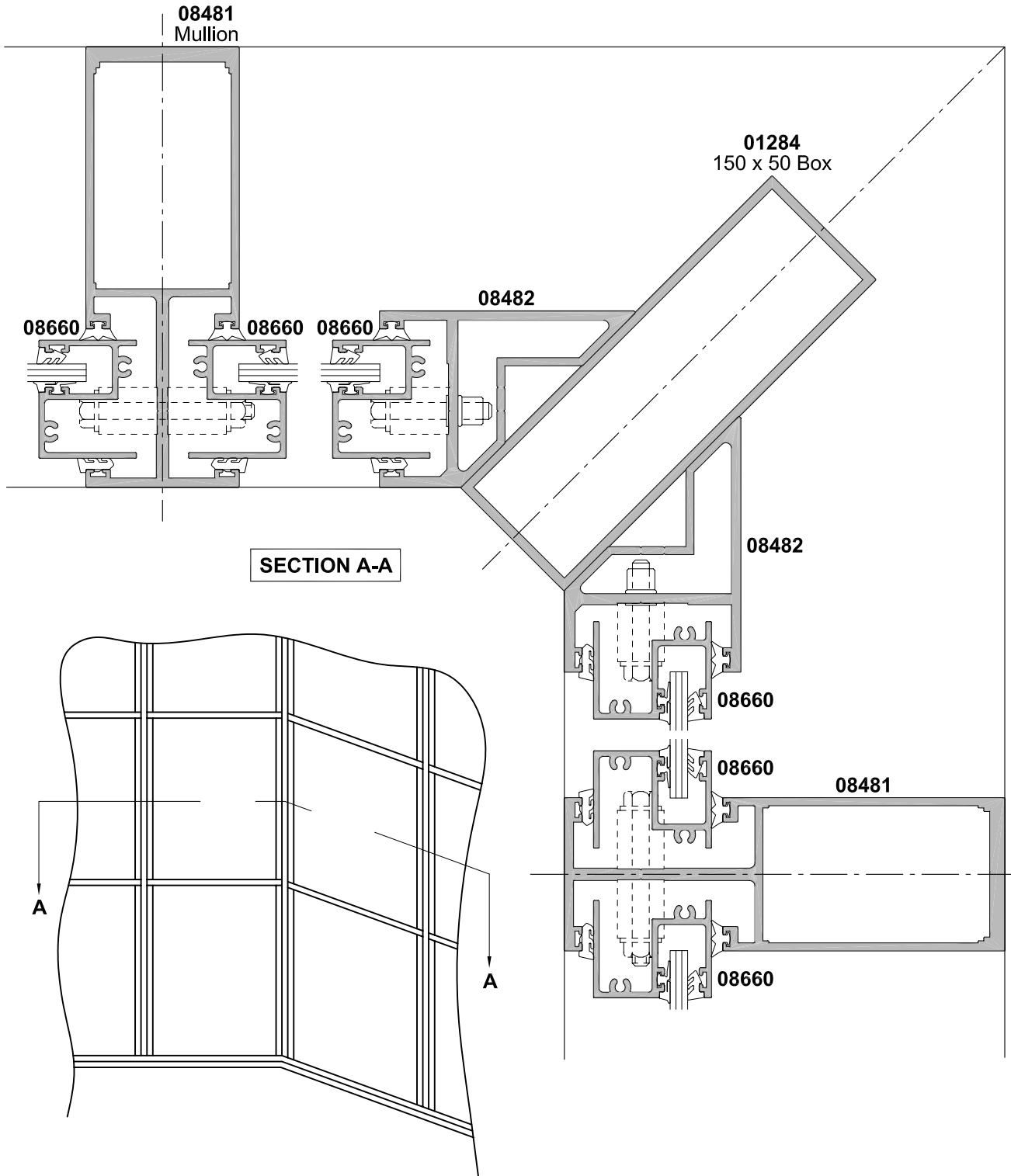
SECTION A-A



**40MM WINDOW SERIES
F130FS CURTAIN WALL
INTERNAL CORNER**

CROSS SECTION

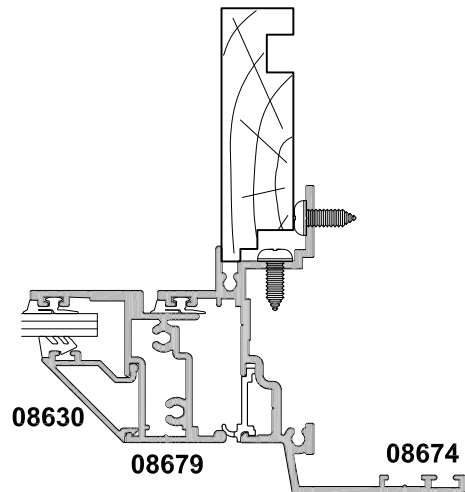
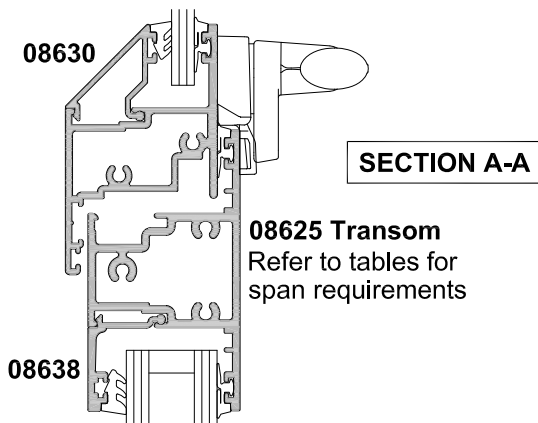
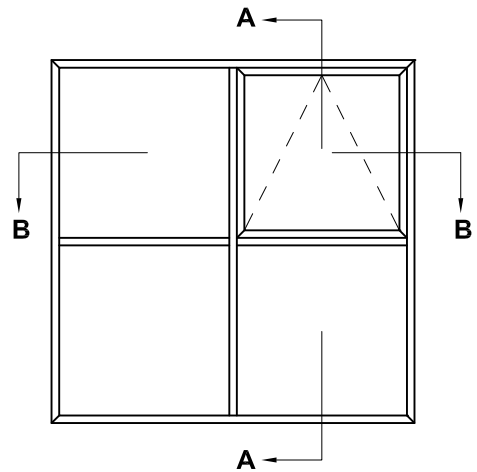
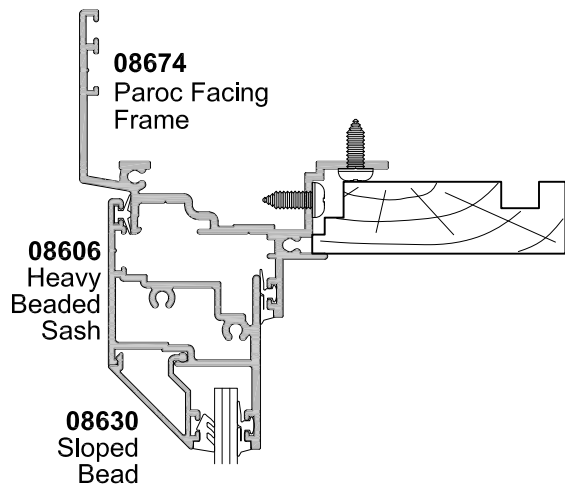
Date 01.11.09 Scale 1:2



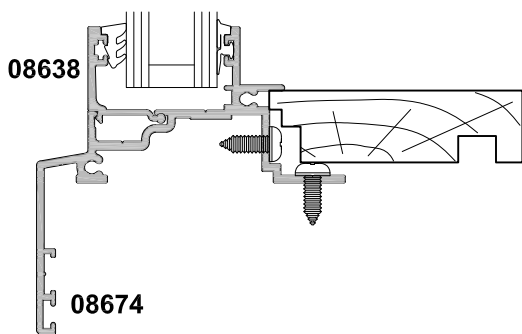
40MM WINDOW SERIES
F100FS INSULATED FACADE WALL CLADDINGS

CROSS SECTION

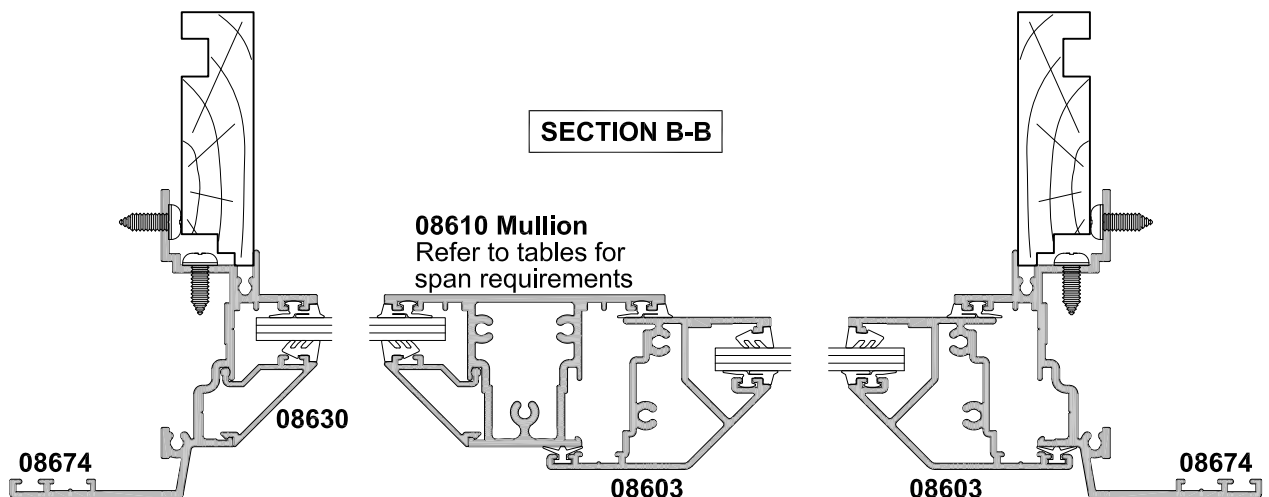
Date 01.06.11 Scale 1:2



NON FACING SASH OPTION



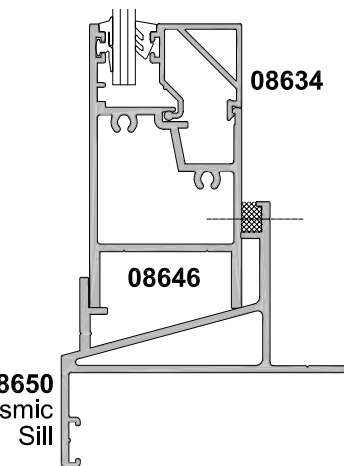
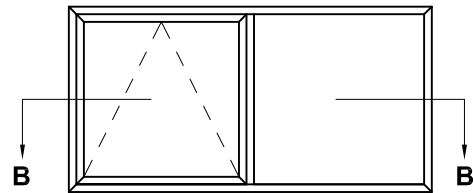
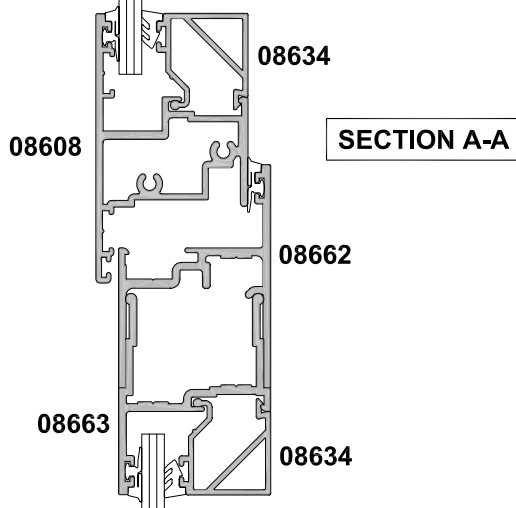
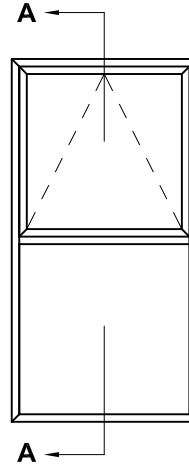
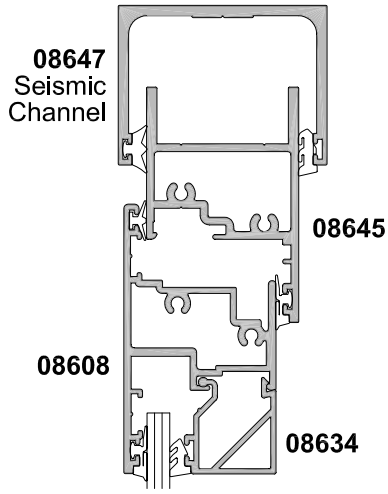
Liners fitted after window installation



40MM WINDOW SERIES
F120FS INTERNAL GLAZING

CROSS SECTION

Date 01.11.09 Scale 1:2



NOTE:
Due to drainage problems it is not possible to have an internally glazed fixed light above a sash. Applications are limited for internal glazing and additional sealing is required - Refer to Technical Advisory Services for further details.

