

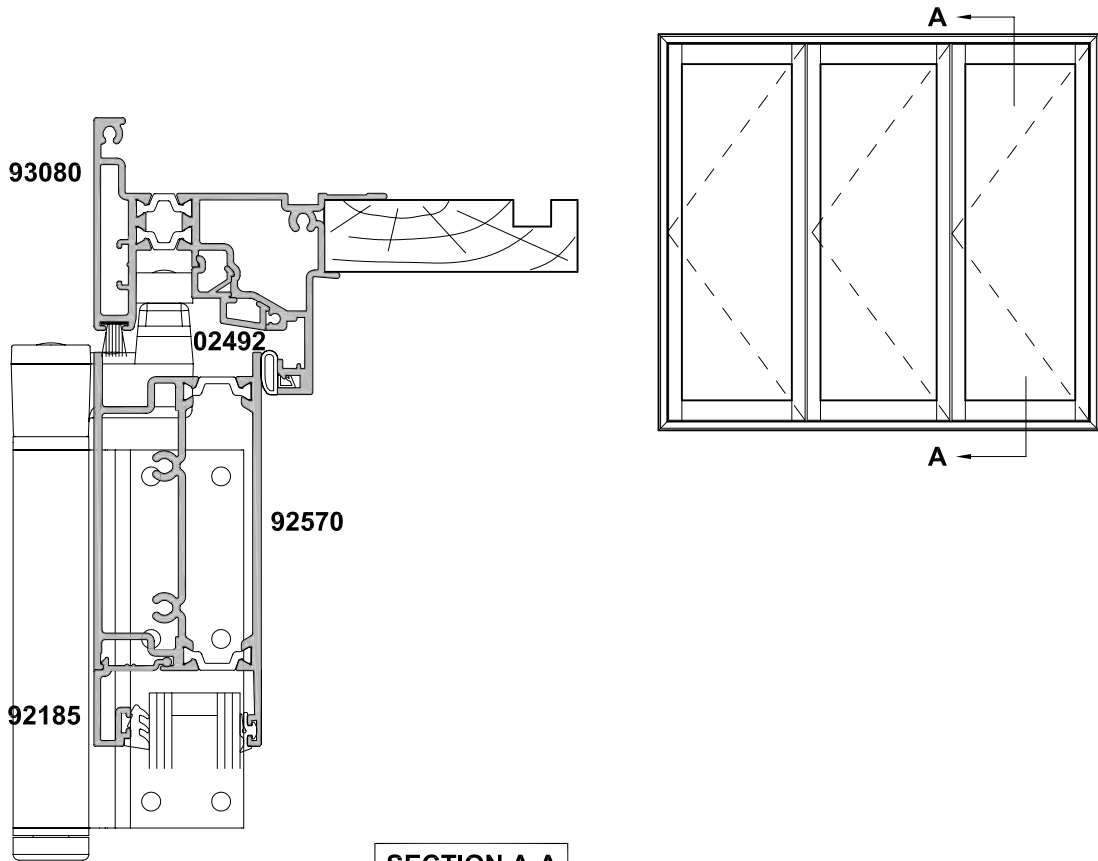


Cad Ref. FTBD02-0

**METRO THERMAL HEART
F600MT BI-FOLD DOOR
OPEN OUT**

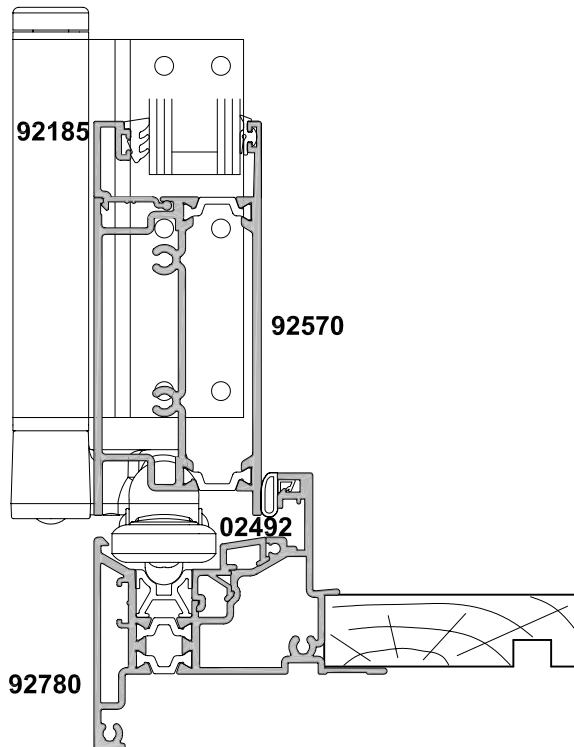
CROSS SECTION

Date 01.11.09 Scale 1:2



SECTION A-A

Refer to Hinge Door
Section for Vision Rail
Options



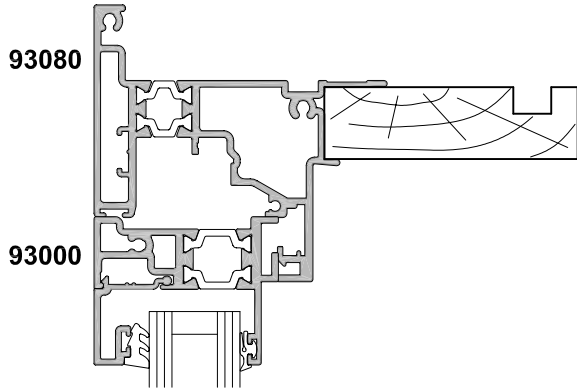


Cad Ref. FTBD03-0

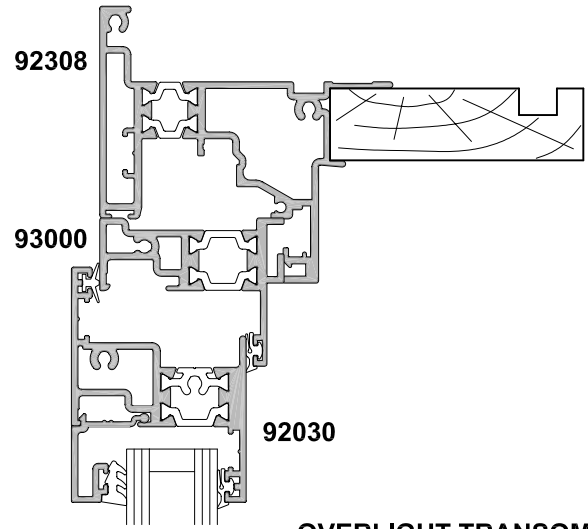
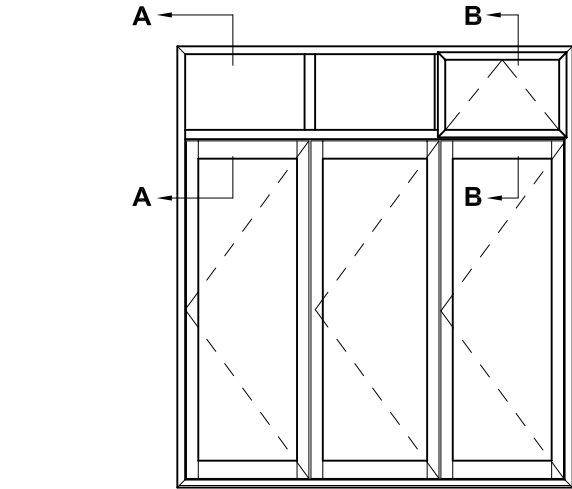
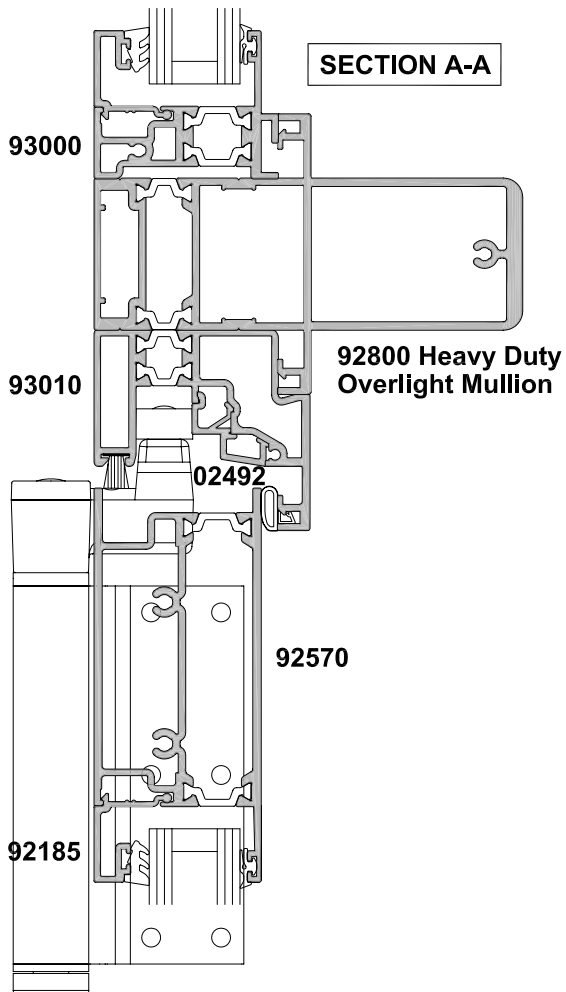
METRO THERMAL HEART F600MT BI-FOLD DOOR OVERLIGHT TRANSOM

CROSS SECTION

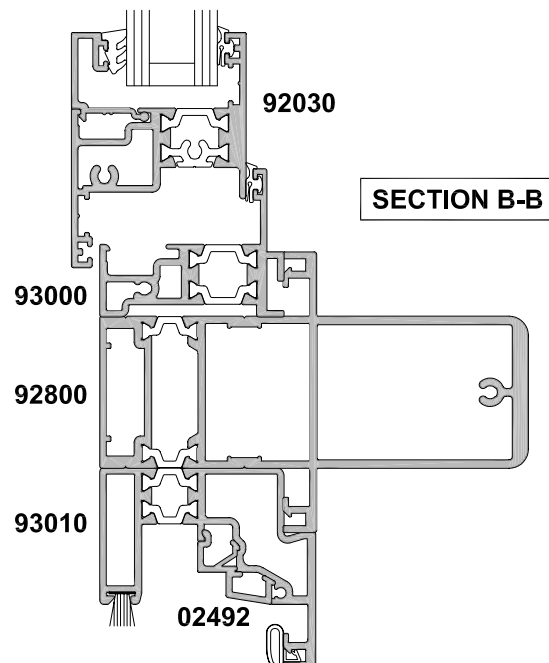
Date 01.11.09 Scale 1:2



**OVERLIGHT TRANSOM
FIXED GLAZING OPTION**



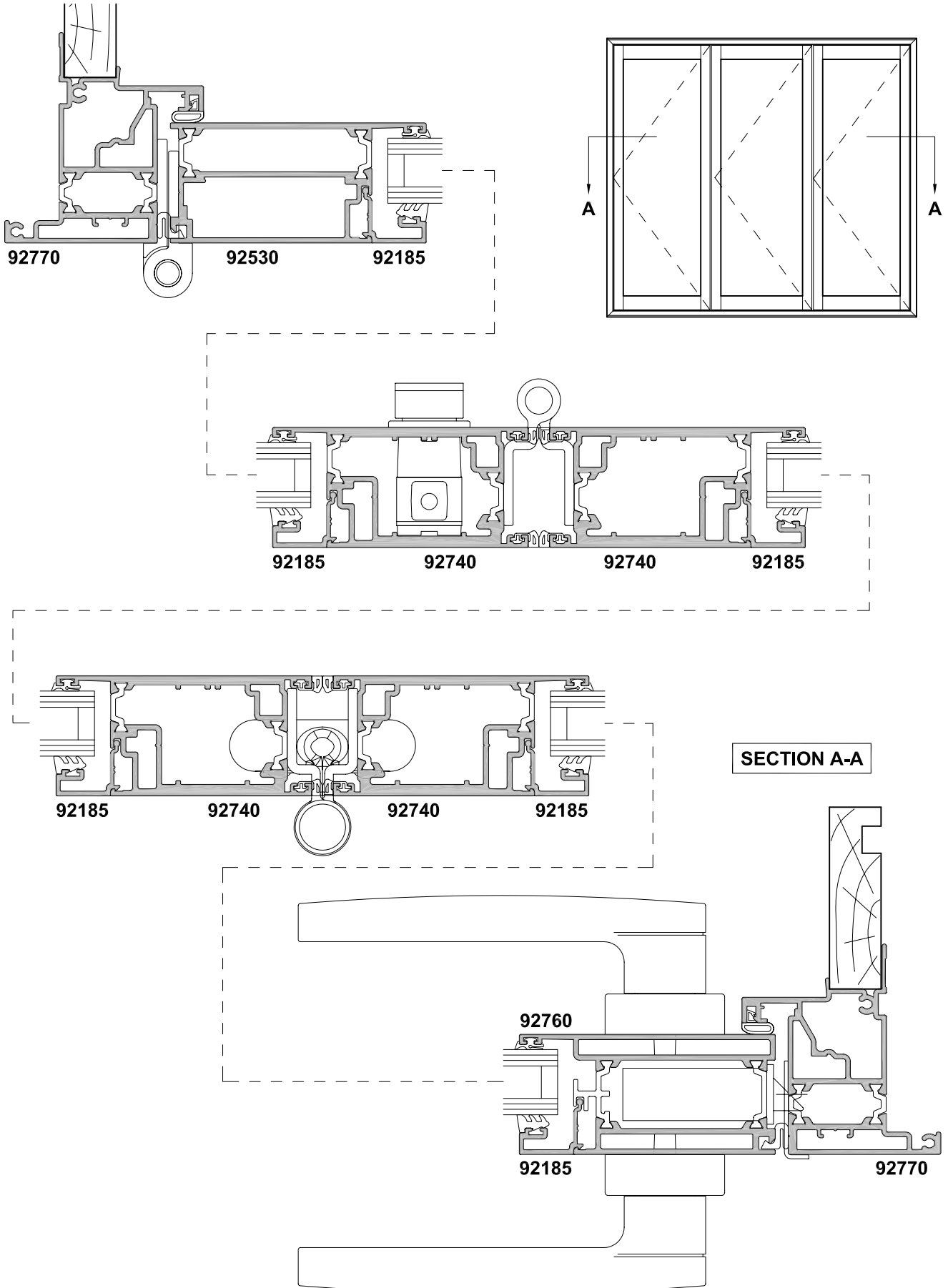
**OVERLIGHT TRANSOM
AWNING SASH OPTION**



**METRO THERMAL HEART
F600MT BI-FOLD DOOR
THREE PANEL OPEN OUT DOOR**

CROSS SECTION

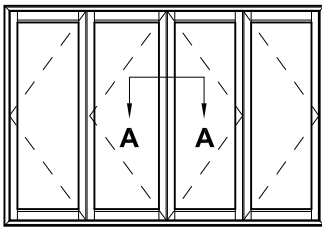
Date 01.11.09 Scale 1:2



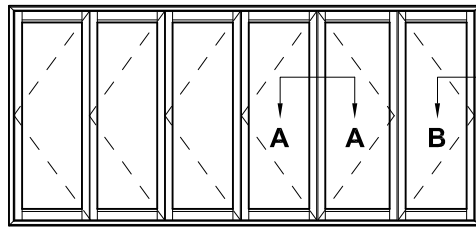
**METRO THERMAL HEART
F600MT BI-FOLD DOOR MEETING STILES**

CROSS SECTION

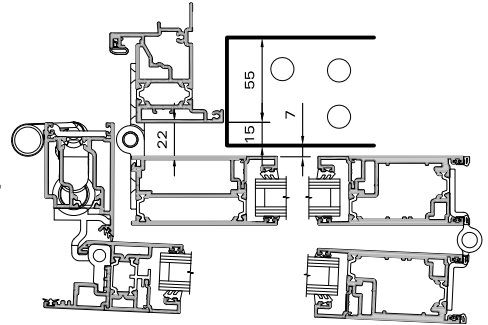
Date 01.11.09 Scale 1:2



2 + 2 Panel



2 + 4 Panel



SECTION B-B

Scale: NTS

**LAY-BACK STILE OPTION
(Two panel sides only)**

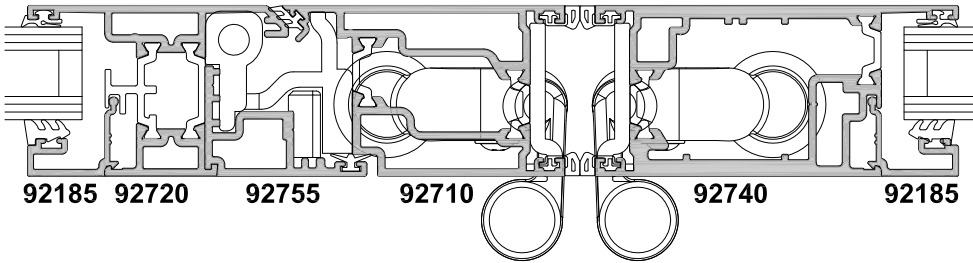
**STANDARD STILE
(Any side with even
number of panels)**

Lay-Back Installation Restrictions

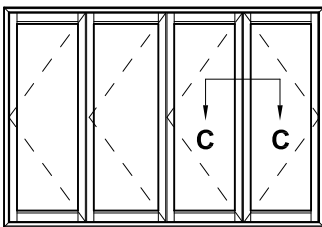
When the Lay-Back panels are opened fully they sit 22mm off the front face of the frame. For the vast majority of cladding options, this will not be an issue, but in the following options it will be:

- Brick Veneer
- Recessed EIFS (plaster clad Poly)
- Concrete Block
- Precast Concrete Panel

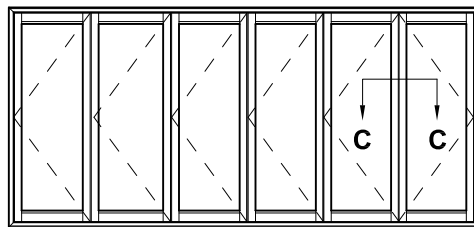
In these Claddings the frame will need to be installed with the facings over the face of the cladding, or recessed no more than 15mm as shown (to provide a minimum 7mm clearance when open).



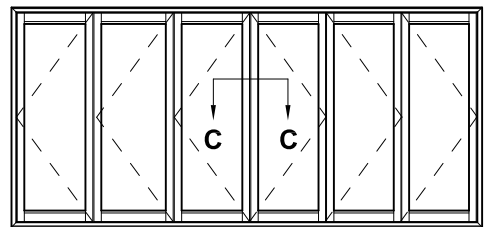
SECTION A-A



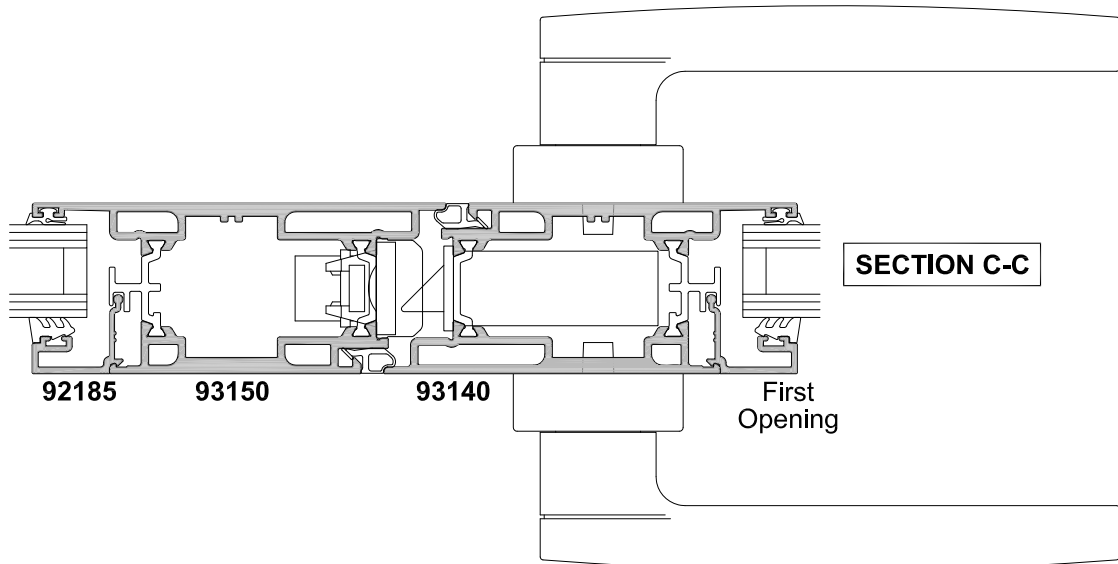
3 + 1 Panel



5 + 1 Panel



3 + 3 Panel

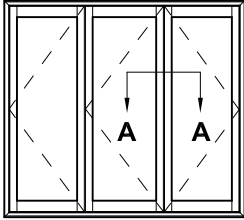


SECTION C-C

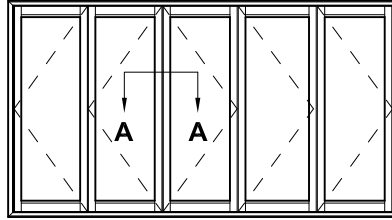
**METRO THERMAL HEART
F600MT BI-FOLD DOOR
MEETING STILES**

CROSS SECTION

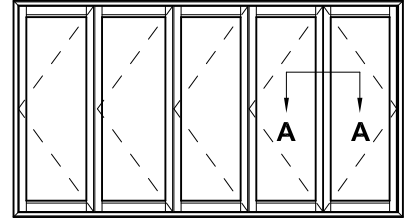
Date 01.06.11 Scale 1:2



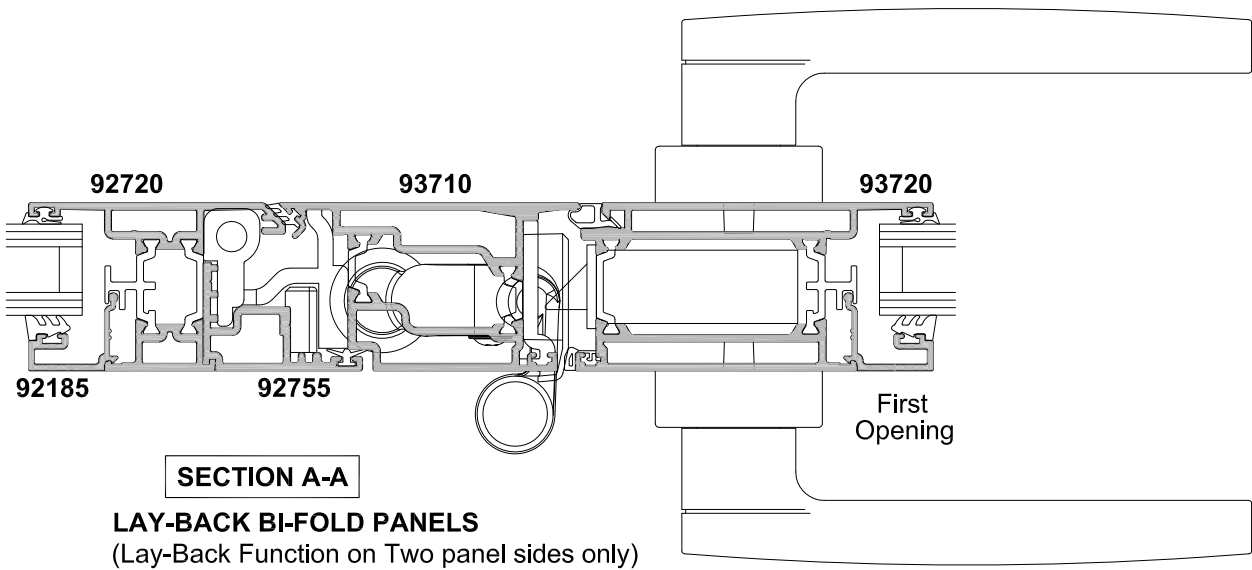
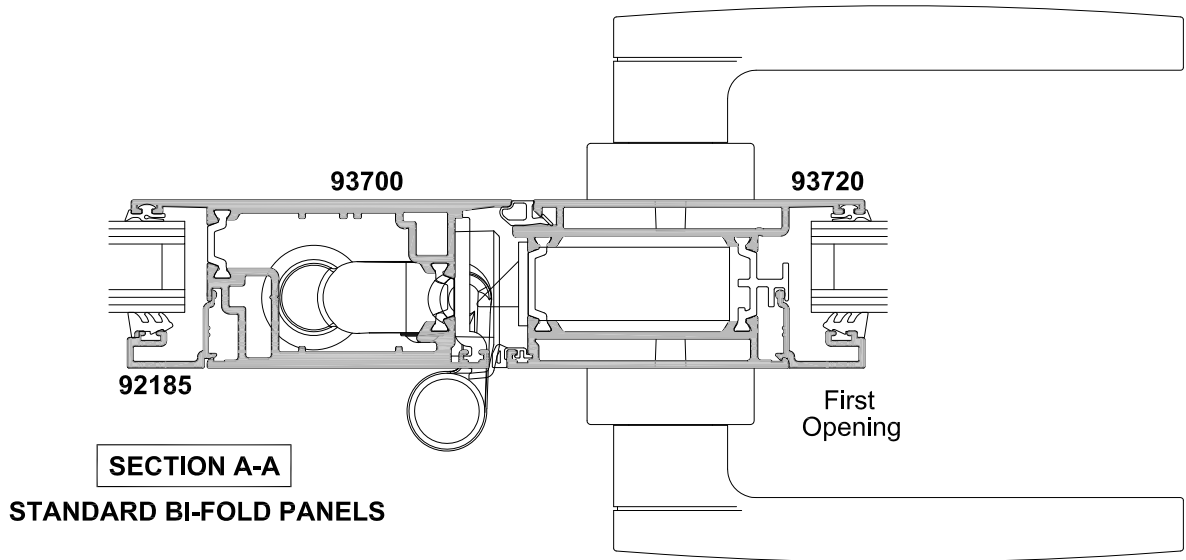
2 + 1 Panel

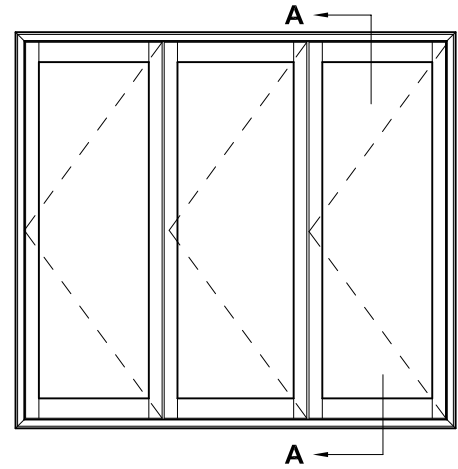
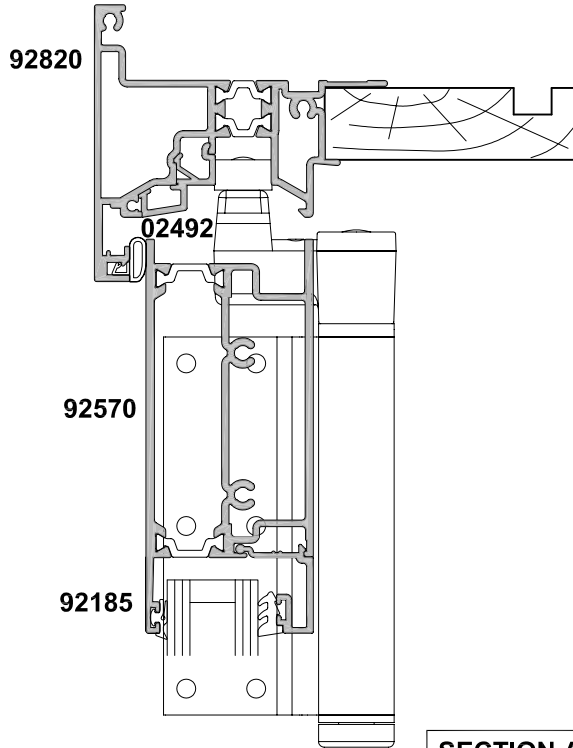


2 + 3 Panel



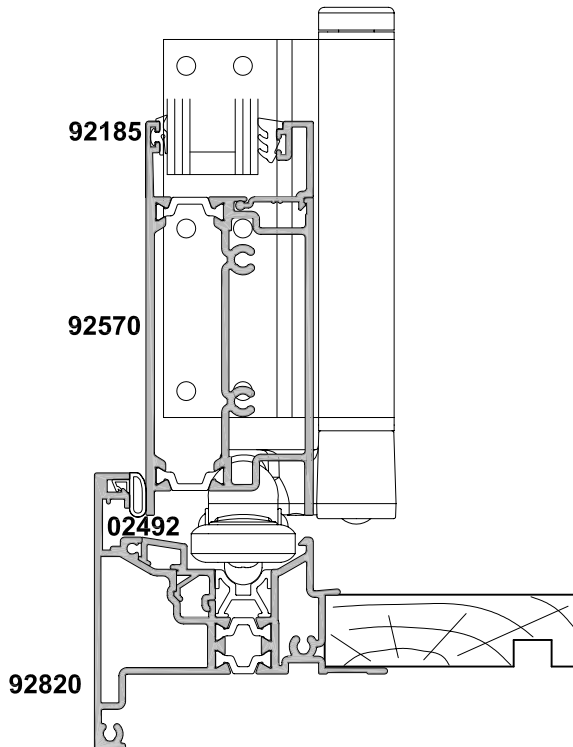
4 + 1 Panel





SECTION A-A

Refer to Hinge Door
Section for Vision Rail
Options





Cad Ref. FTBD08-0

**METRO THERMAL HEART
F620MT BI-FOLD DOOR
THREE PANEL OPEN IN DOOR**

CROSS SECTION

Date 01.11.09 Scale 1:2

