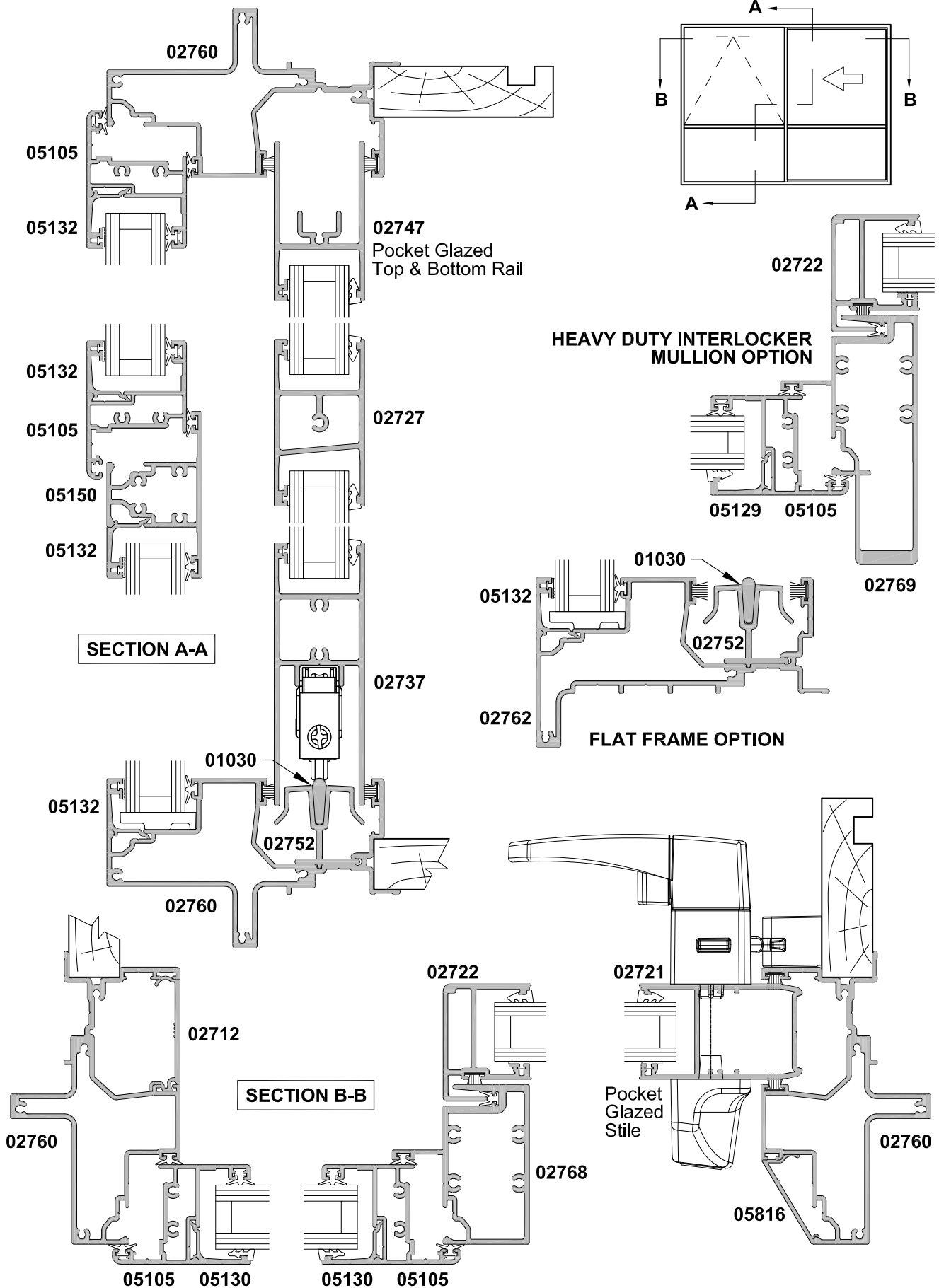


SLIDING DOOR
TWO PANEL FS WITH SIDELIGHT SASH
CROSS SECTION

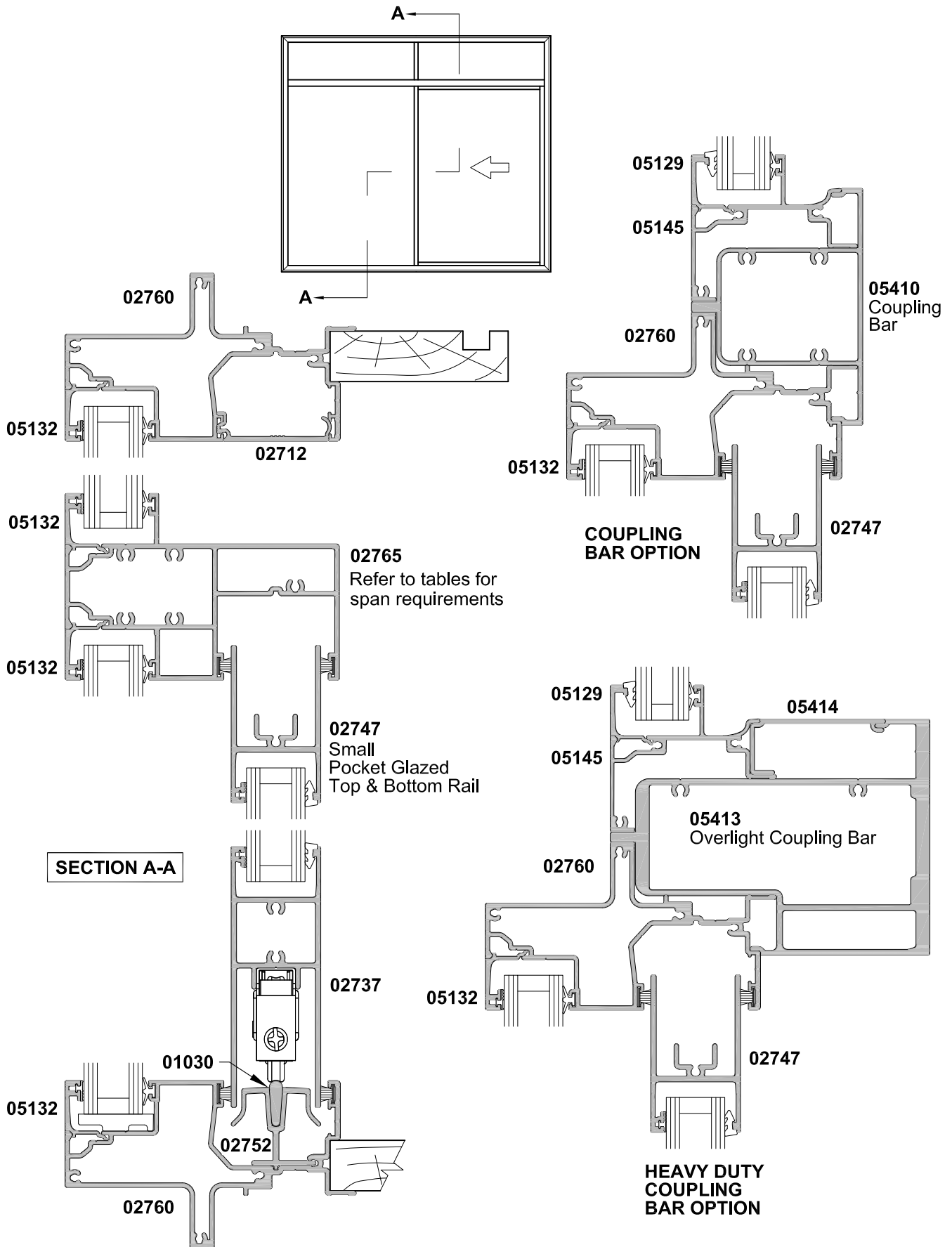
Date 01.04.19 Scale 1:2



**SLIDING DOOR, TWO PANEL FS
WITH OVERLIGHT TRANSOM AND COUPLING OPTIONS**

CROSS SECTION

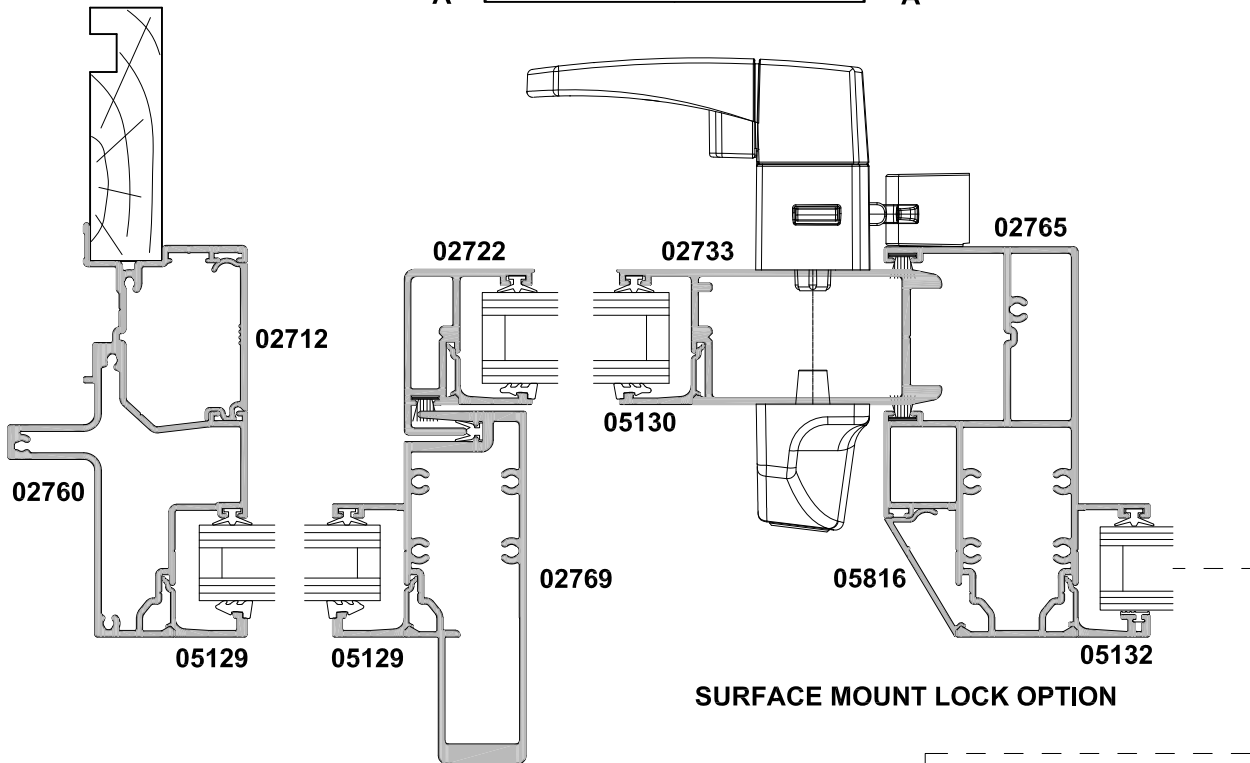
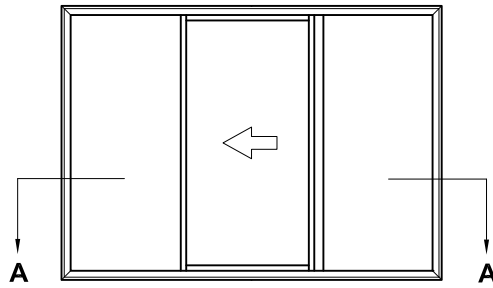
Date 01.04.19 Scale 1:2



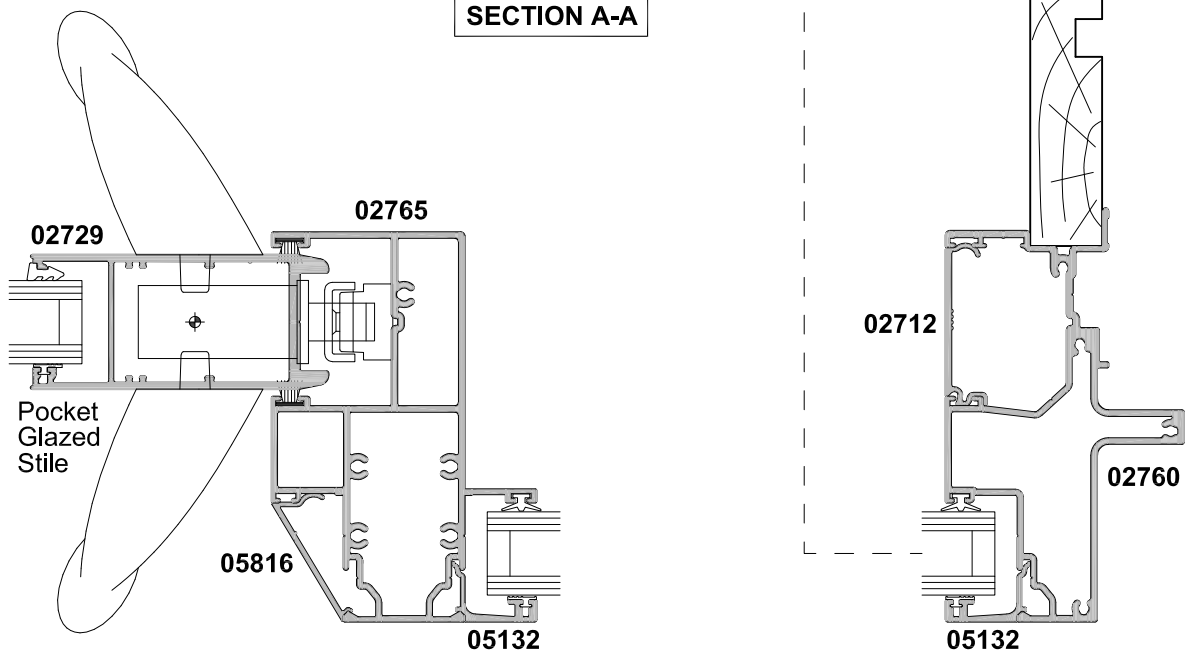
SLIDING DOOR, THREE PANEL FSF

CROSS SECTION

Date 01.04.19 Scale 1:2



SECTION A-A

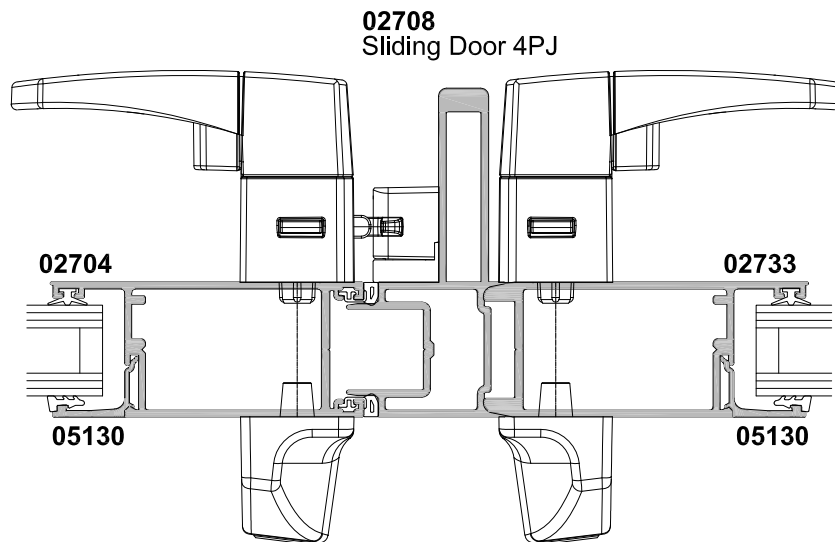
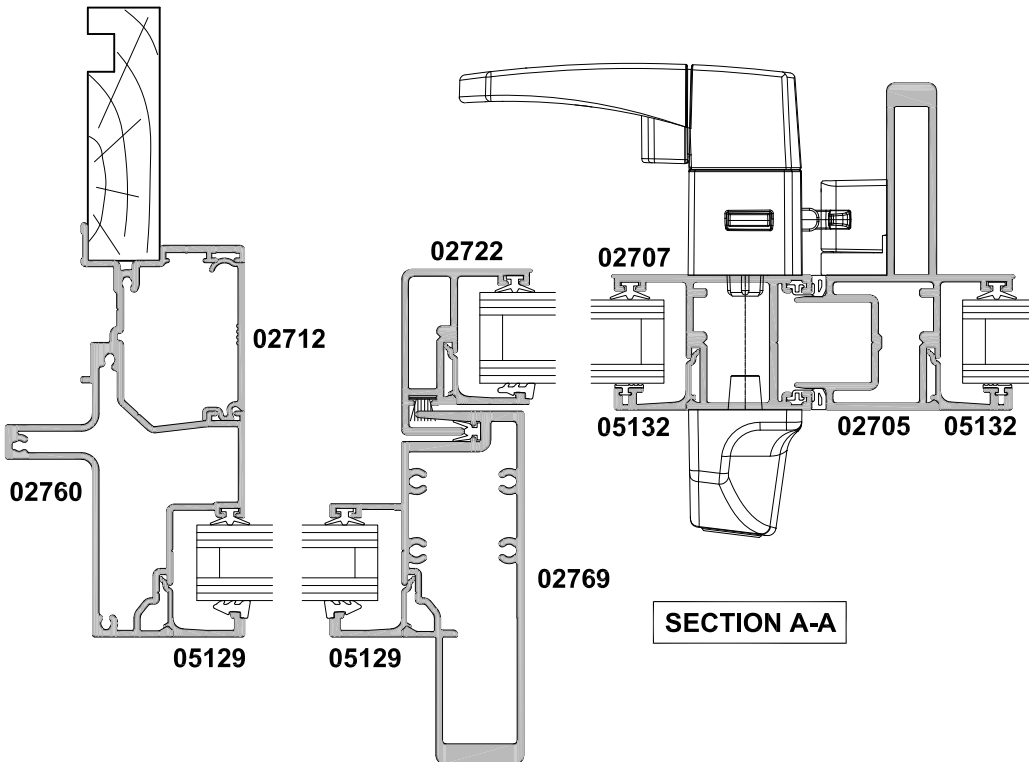
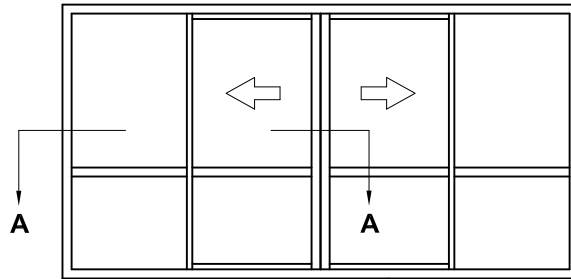


MORTICE LOCK OPTION

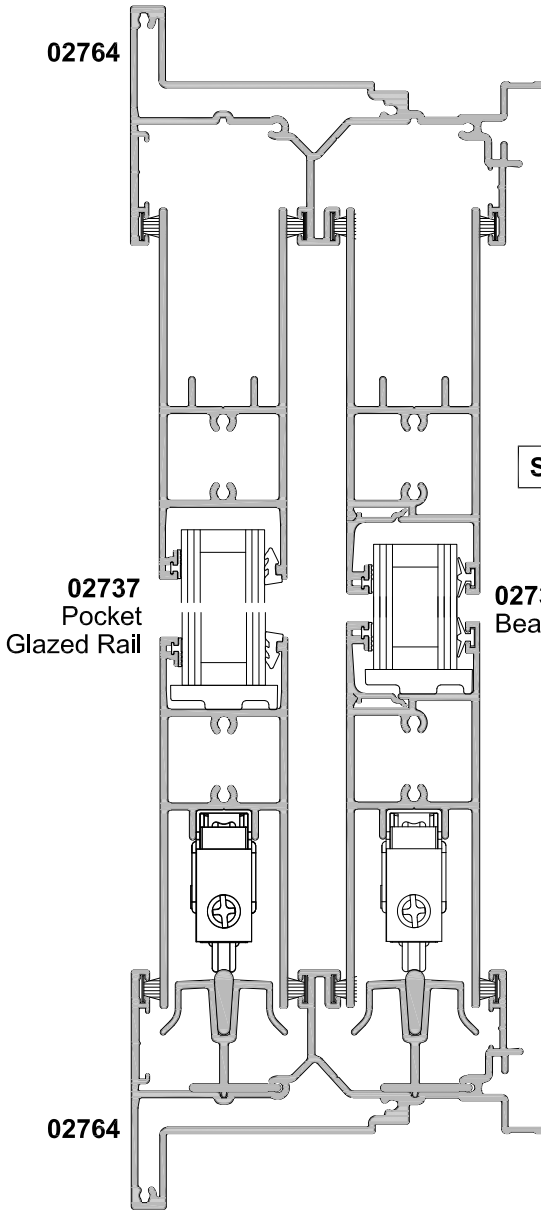
SLIDING DOOR, FOUR PANEL FSSF

CROSS SECTION

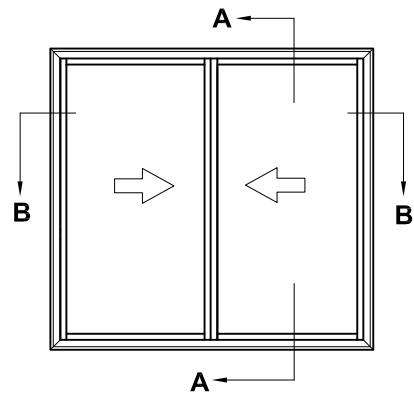
Date 01.04.19 Scale 1:2



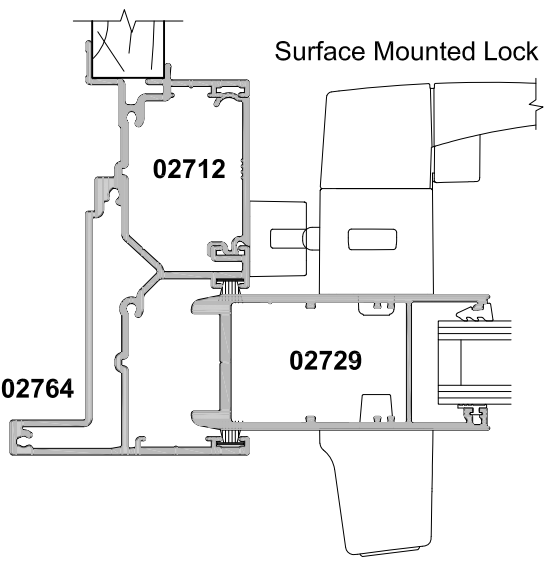
HEAVY DUTY OPTION



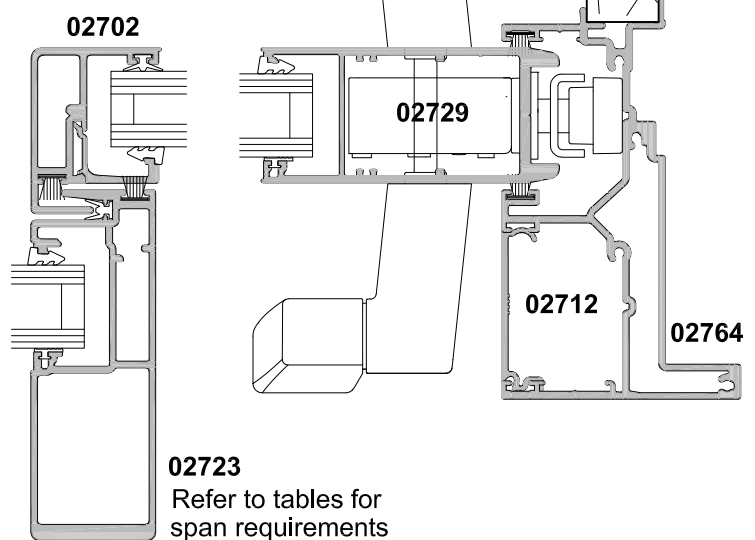
SECTION A-A



Note:
Not suitable for Extra High Wind Zone and above



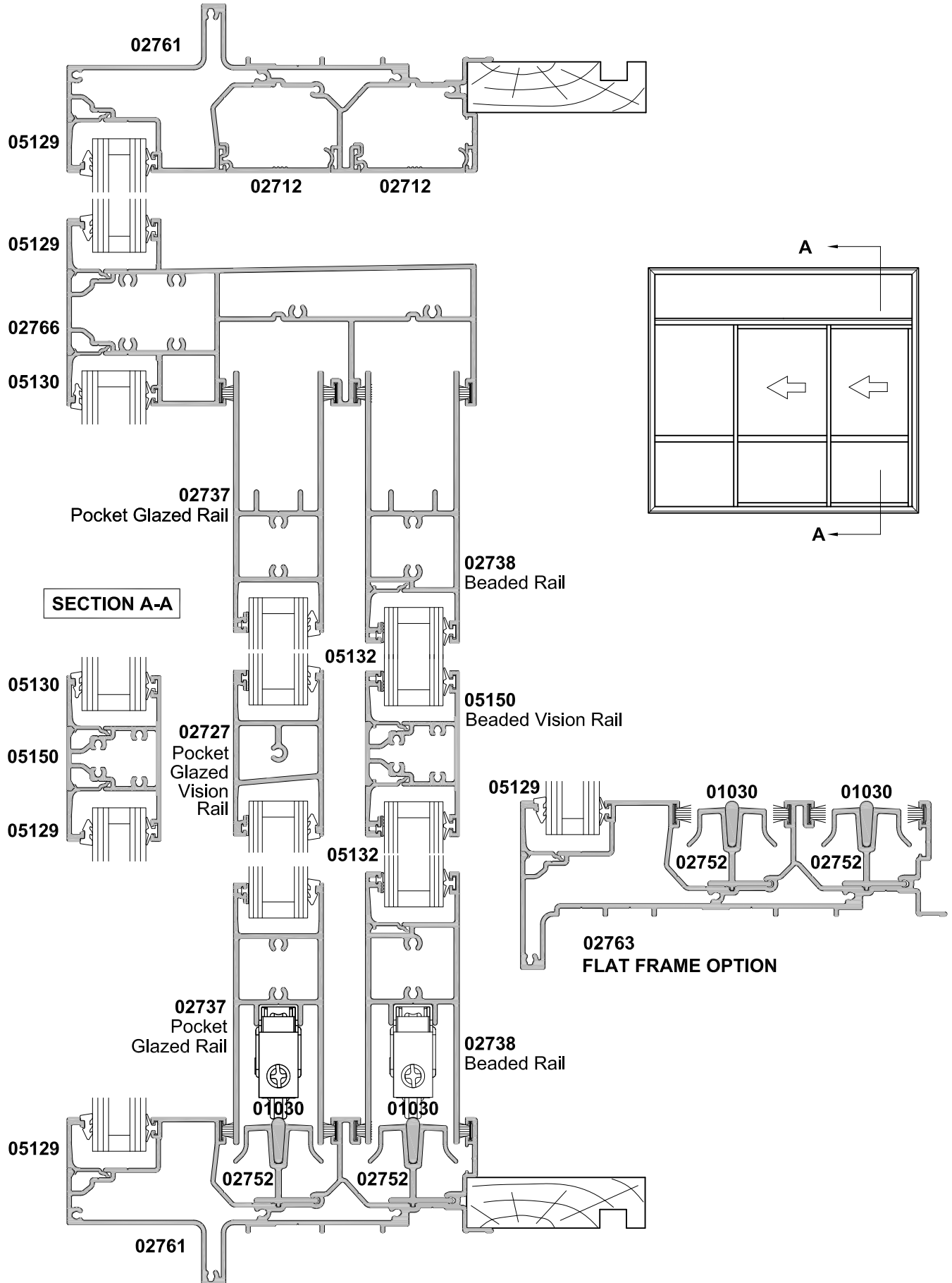
SECTION B-B



**SLIDING DOOR DUO, THREE PANEL FSS
WITH OVERLIGHT TRANSOM**

CROSS SECTION

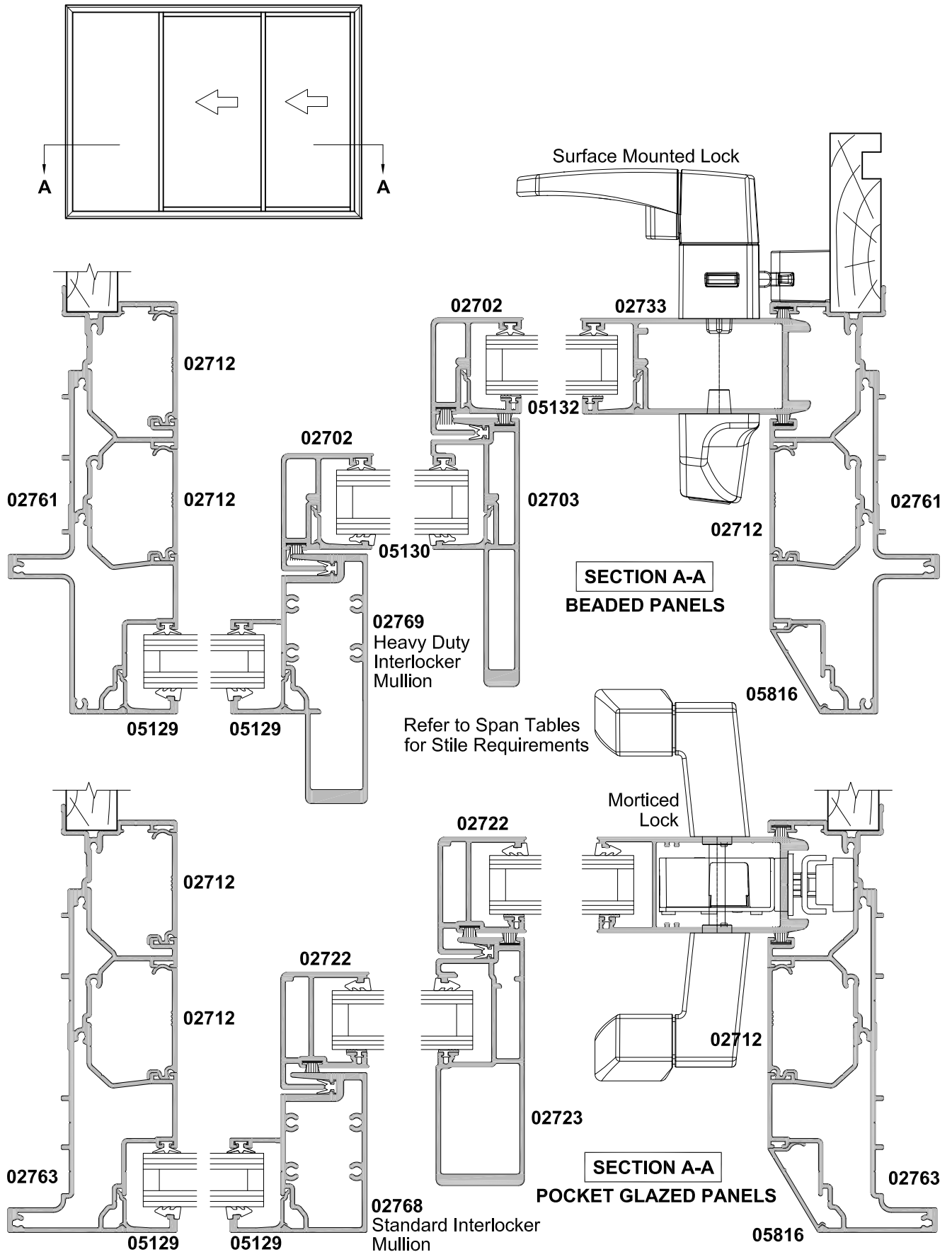
Date 01.04.19 Scale 1:2

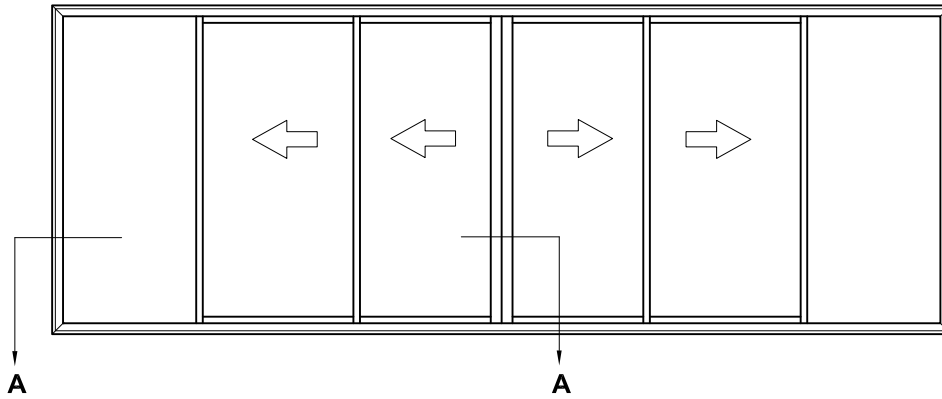


SLIDING DOOR DUO, THREE PANEL FSS

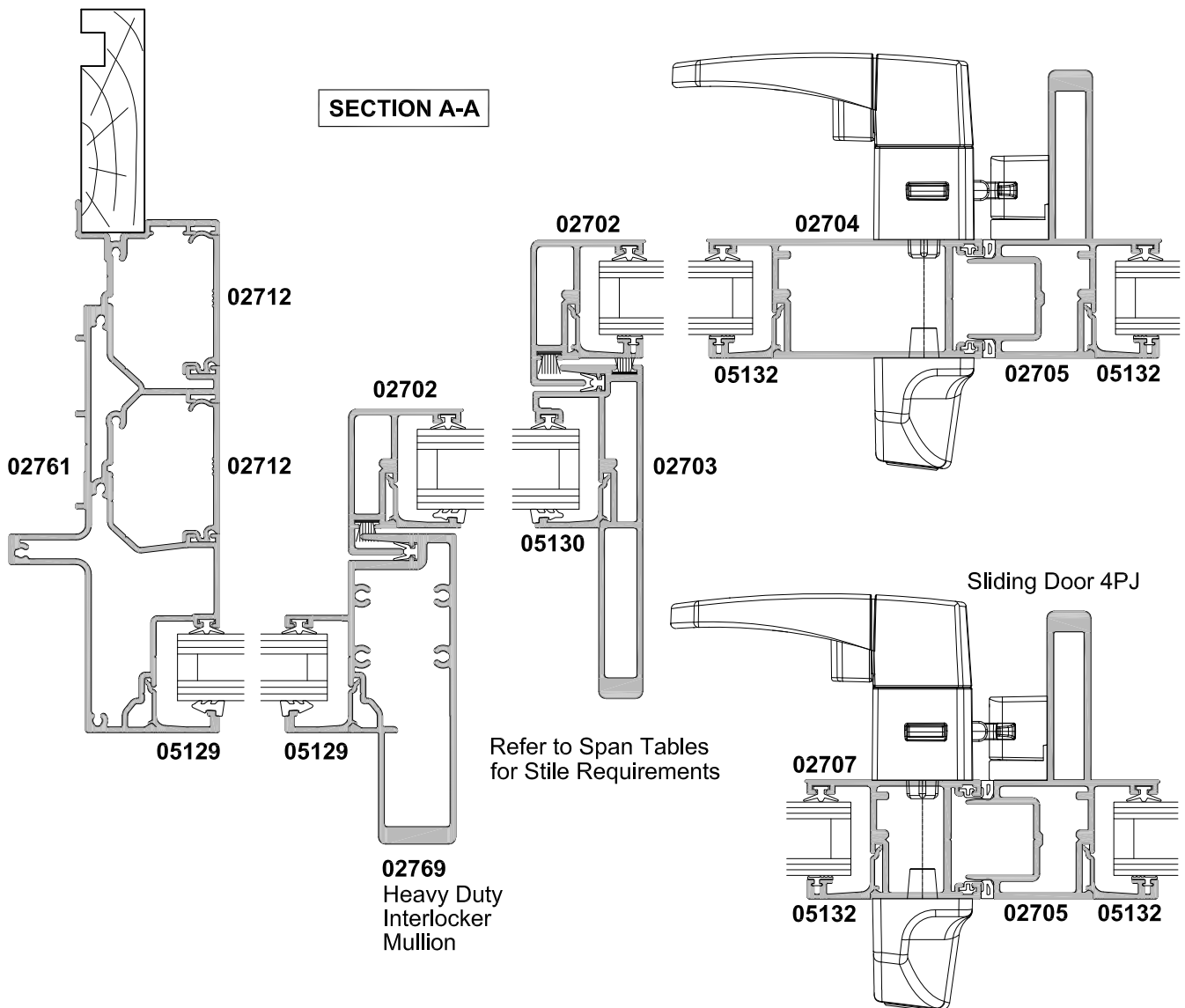
CROSS SECTION

Date 01.04.19 Scale 1:2





SECTION A-A



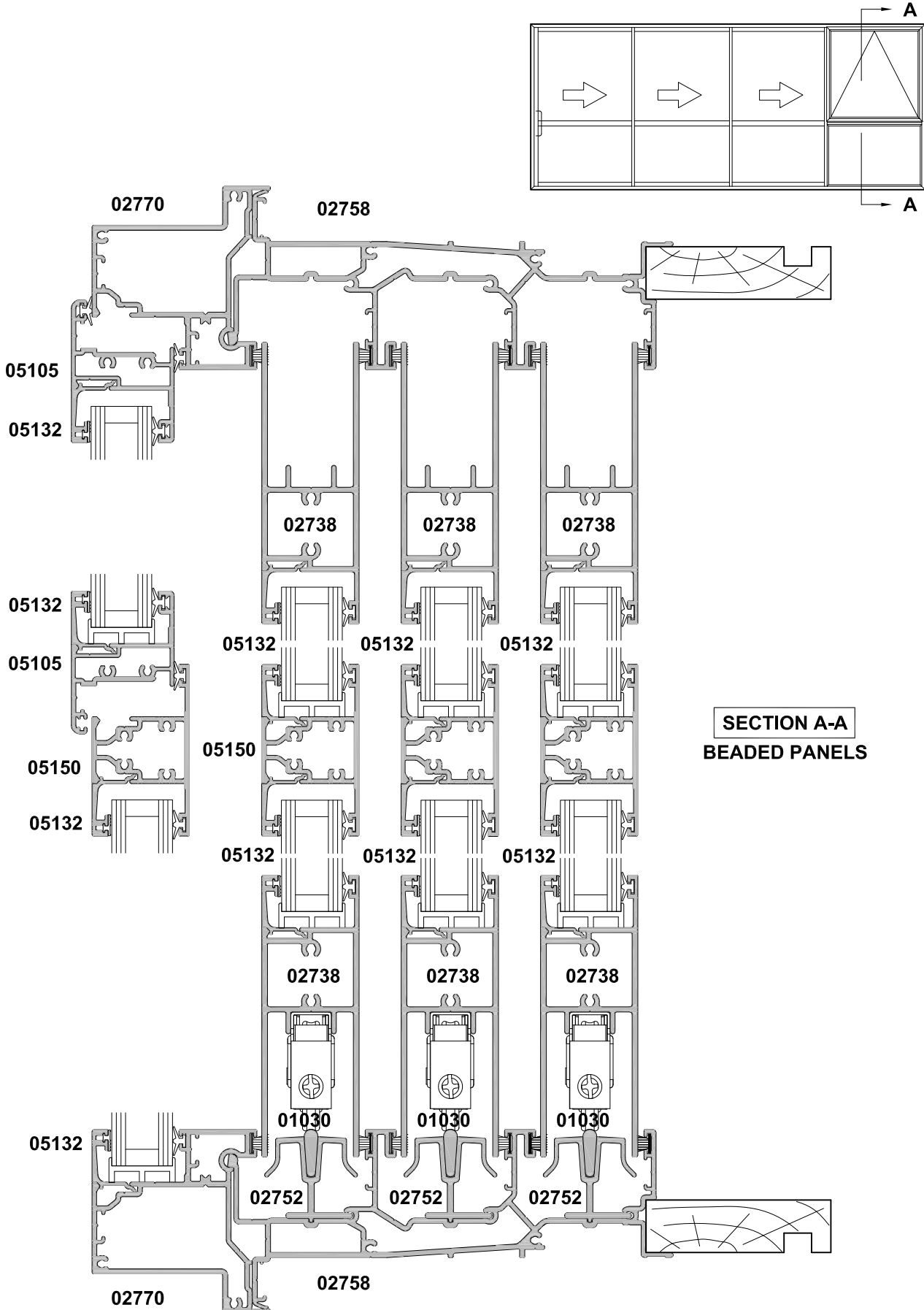
02769
Heavy Duty
Interlocker
Mullion

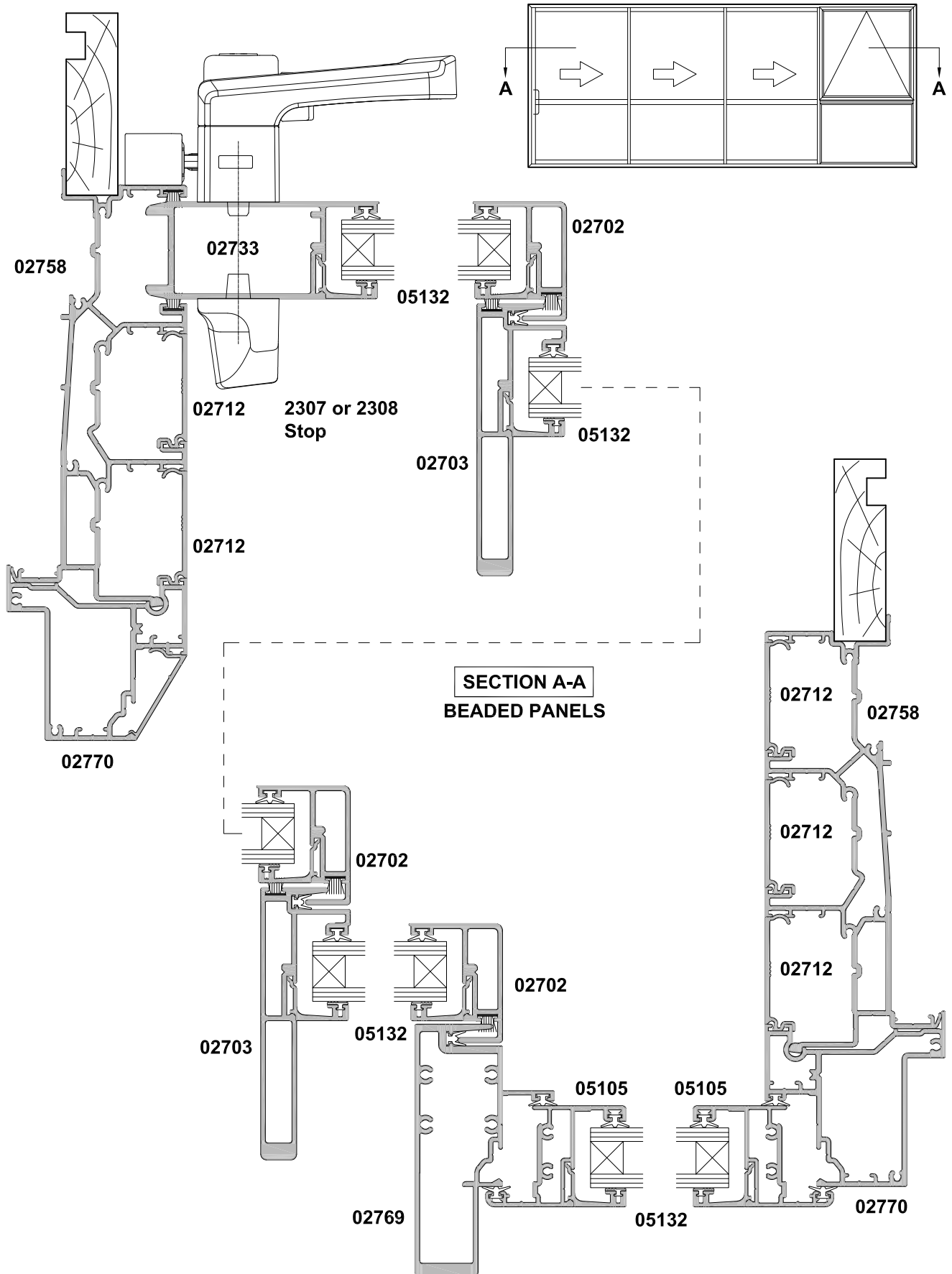
ALTERNATIVE OPTION

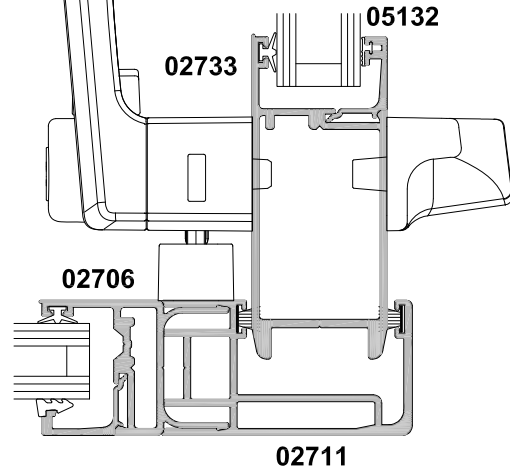
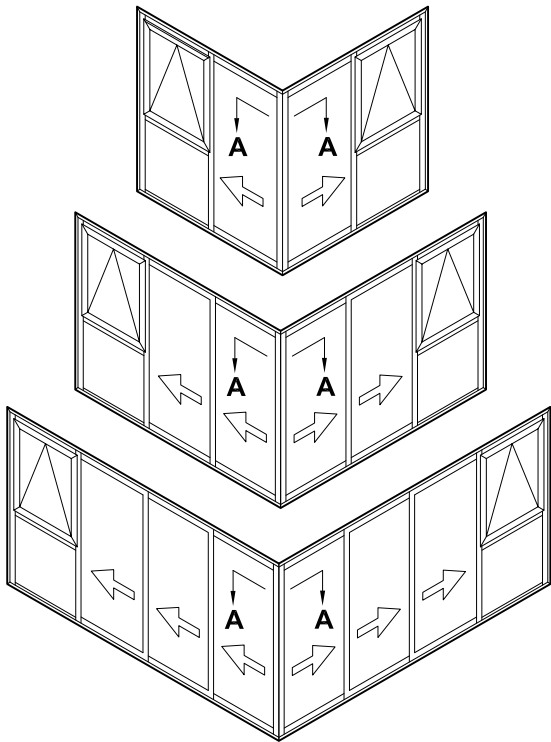
SLIDING DOOR, FOUR PANEL SSSF

CROSS SECTION

Date 01.04.19 Scale 1:2



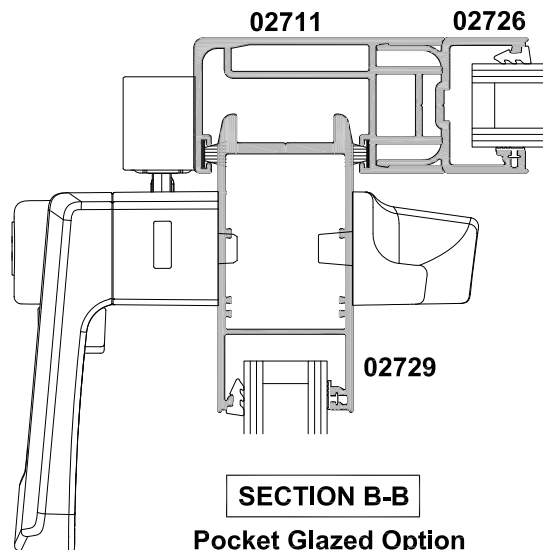
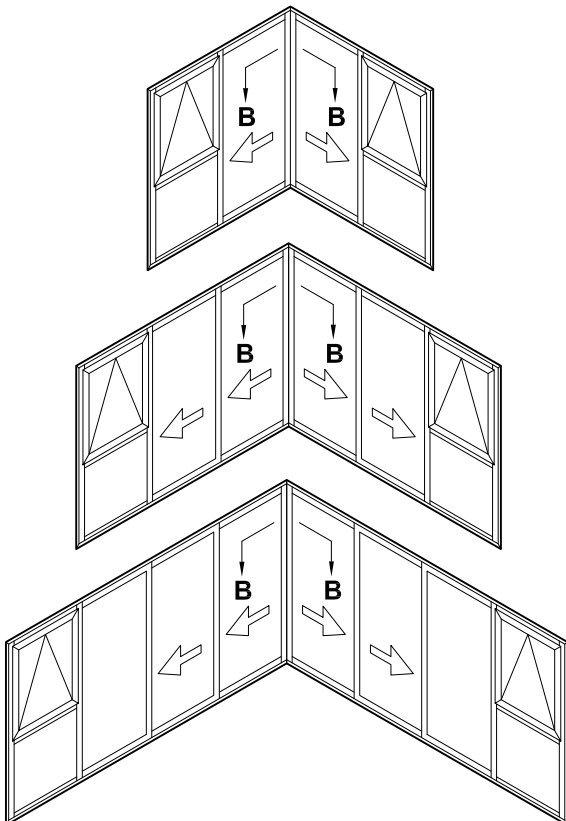




SECTION A-A

Beaded Stile Option

EXTERNAL CORNER



SECTION B-B

Pocket Glazed Option

INTERNAL CORNER