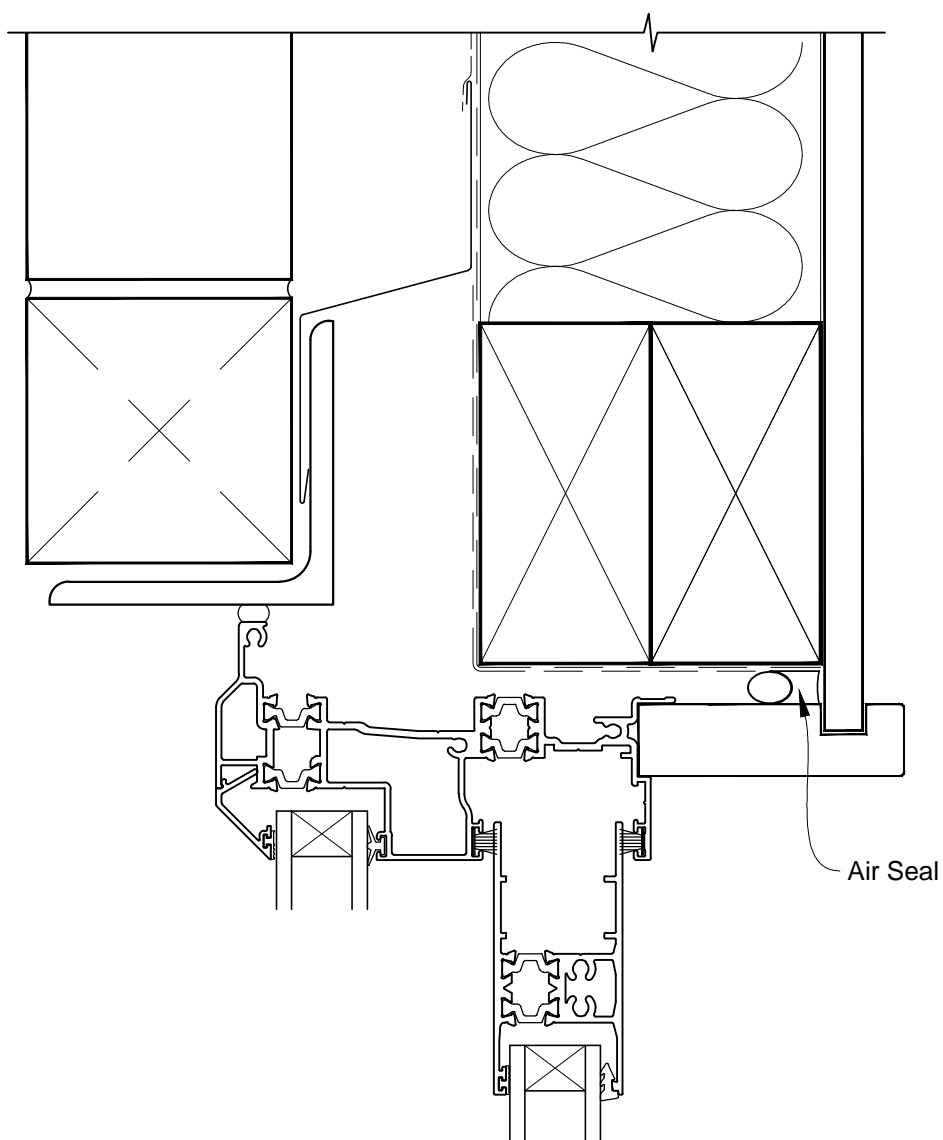


**INSTALLATION DETAIL - FIRST RESIDENTIAL THERMAL HEART
SLIDING WINDOW ON BRICK VENEER
CAVITY CONSTRUCTION**

Date: 01.03.14

Scale: 1:2

CAD Ref.: FTSWBV-CH

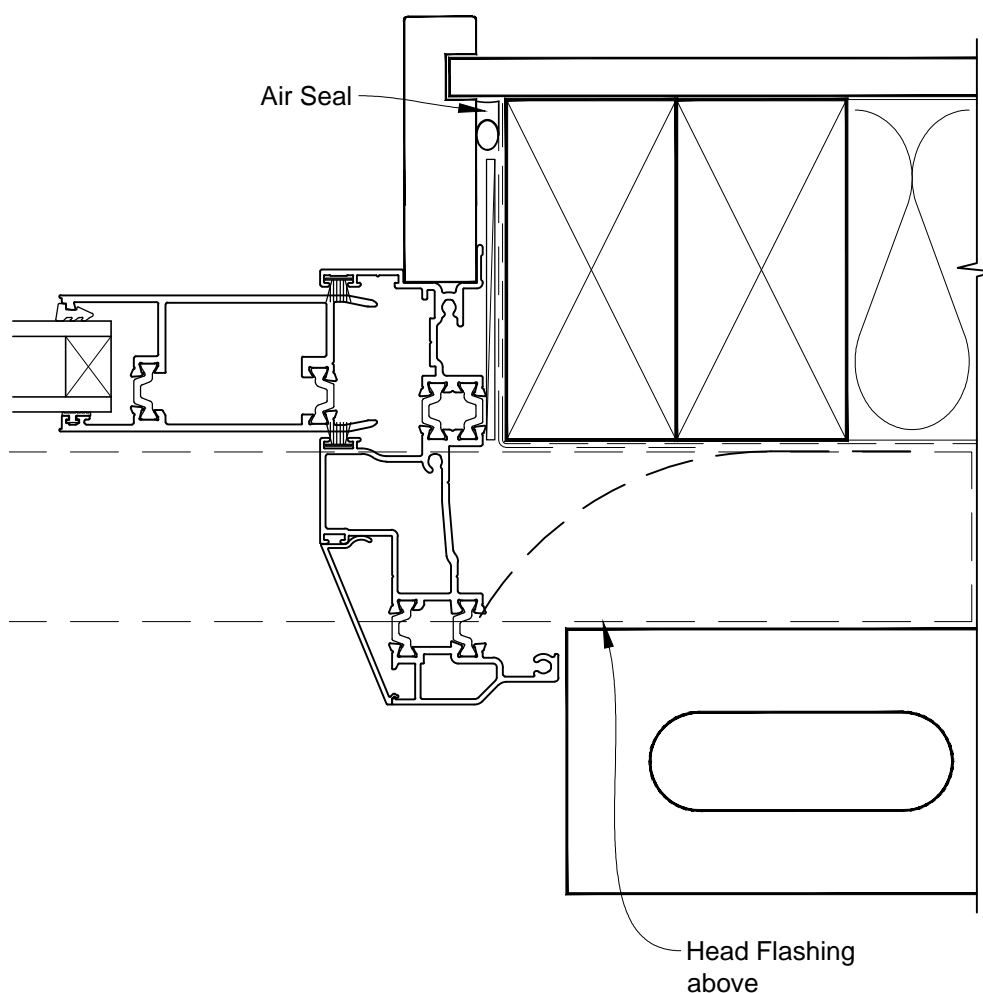


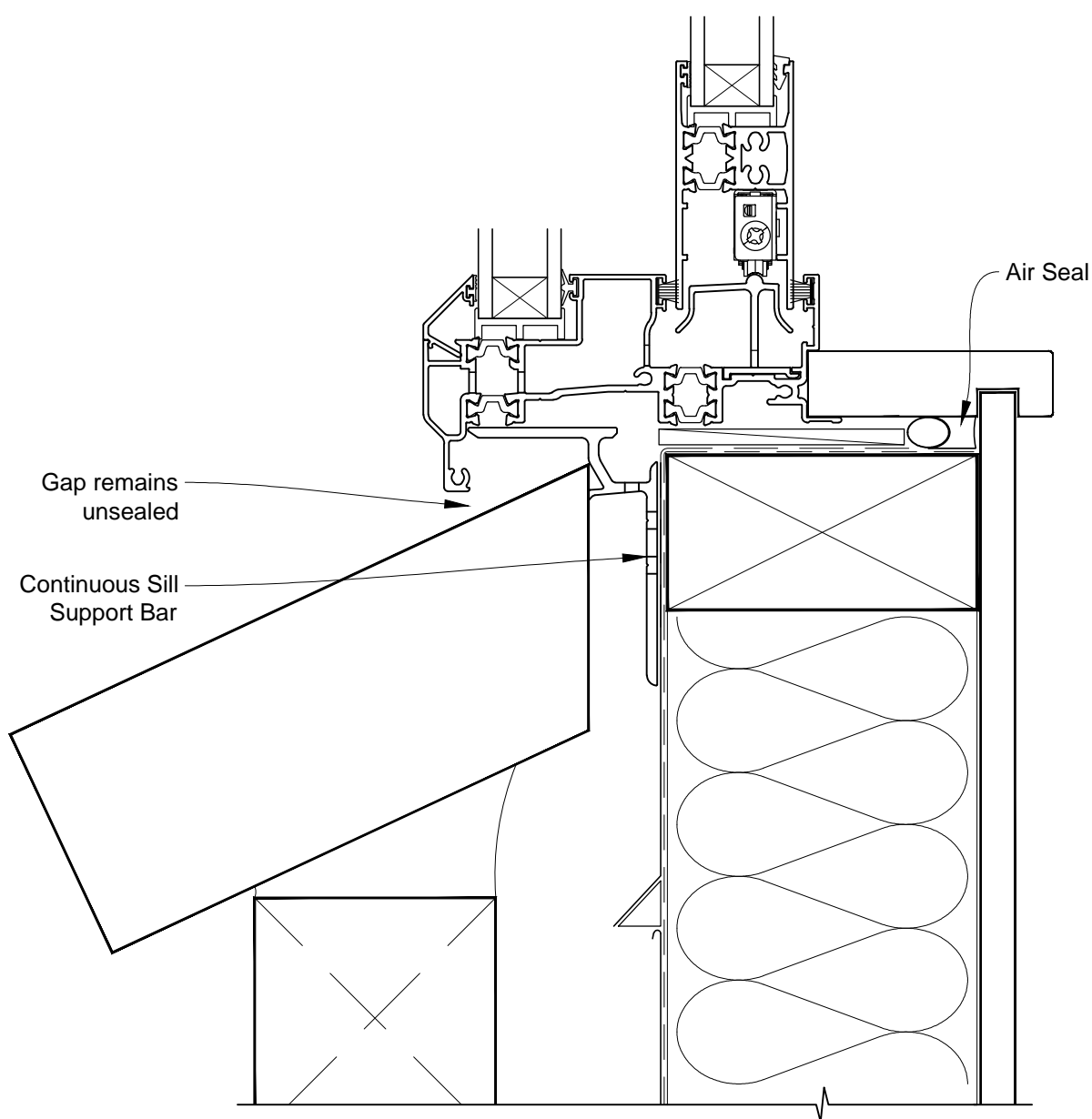
**INSTALLATION DETAIL - FIRST RESIDENTIAL THERMAL HEART
SLIDING WINDOW ON BRICK VENEER
CAVITY CONSTRUCTION**

Date: 01.03.14

Scale: 1:2

CAD Ref.: FTSWBV-CJ





INSTALLATION DETAIL - FIRST RESIDENTIAL THERMAL HEART SLIDING WINDOW ON BRICK VENEER CAVITY CONSTRUCTION

Date: 01.03.14

Scale: 1:2

CAD Ref.: FTSWBV-CS2

