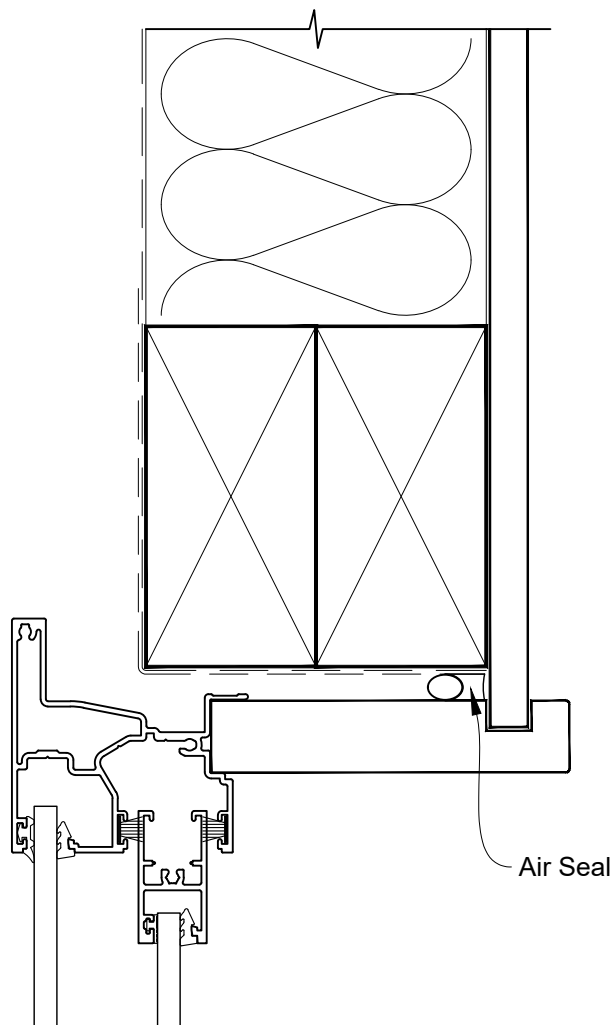


**INSTALLATION DETAIL - FIRST RESIDENTIAL  
SLIMLINE SLIDING WINDOW ON NO CLADDING  
CAVITY CONSTRUCTION**

Date: 01.04.19

Scale: 1:2

CAD Ref.: FRSLNC-CH

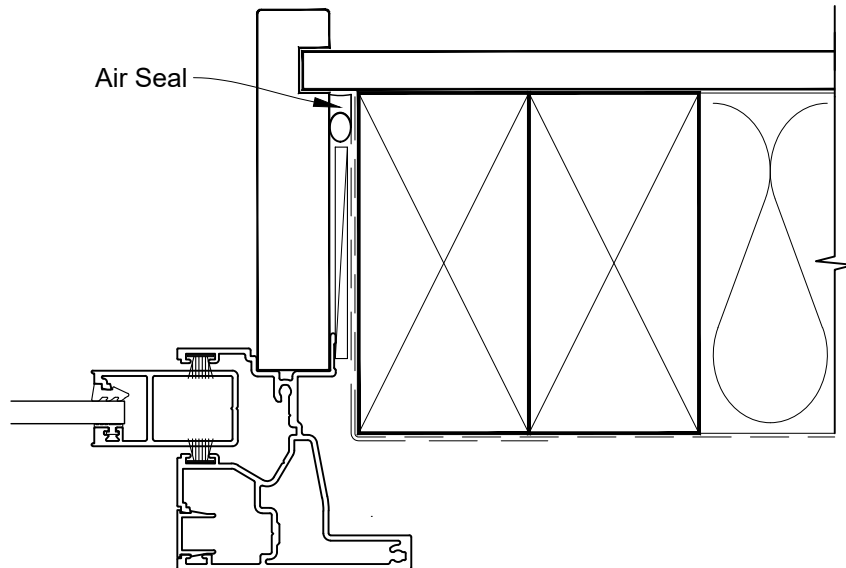


**INSTALLATION DETAIL - FIRST RESIDENTIAL  
SLIMLINE SLIDING WINDOW ON NO CLADDING  
CAVITY CONSTRUCTION**

Date: 01.04.19

Scale: 1:2

CAD Ref.: FRSLNC-CJ



**INSTALLATION DETAIL - FIRST RESIDENTIAL  
SLIMLINE SLIDING WINDOW ON NO CLADDING  
CAVITY CONSTRUCTION**

Date: 01.04.19

Scale: 1:2

CAD Ref.: FRSLNC-CS

