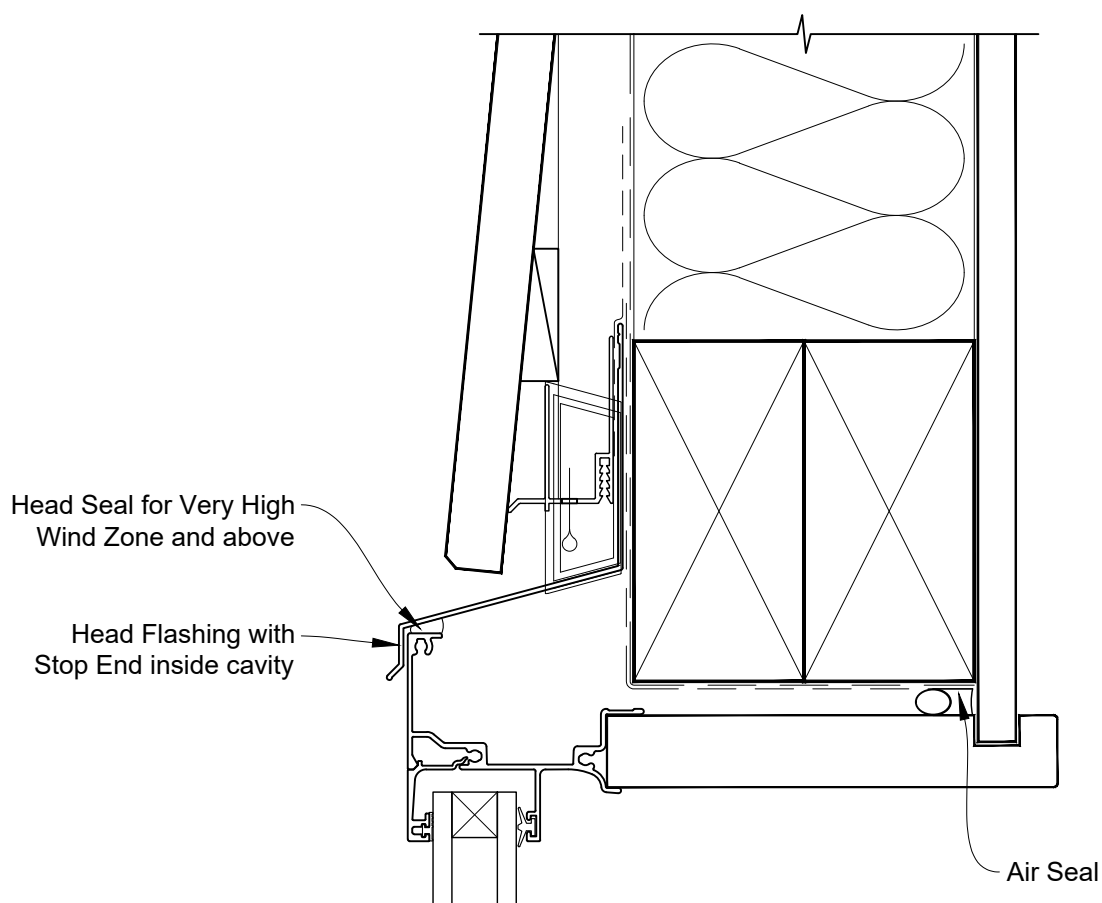


**INSTALLATION DETAIL - FIRST RESIDENTIAL
AWNING WINDOW ON BEVELBACK WEATHERBOARD
CAVITY CONSTRUCTION**

Date: 01.04.19

Scale: 1:2

CAD Ref.: FRAWBW-CH

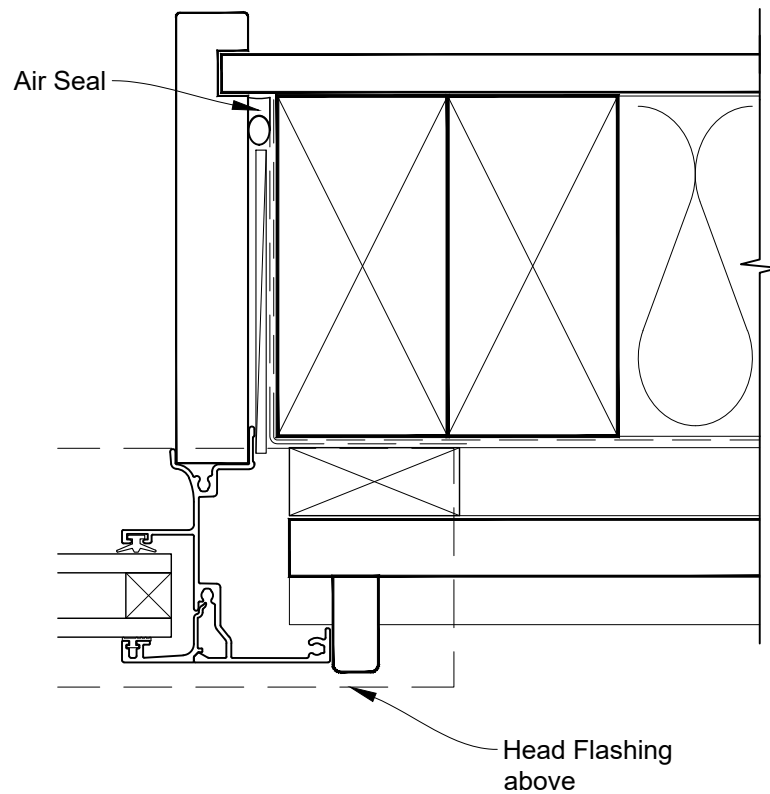


**INSTALLATION DETAIL - FIRST RESIDENTIAL
AWNING WINDOW ON BEVELBACK WEATHERBOARD
CAVITY CONSTRUCTION**

Date: 01.04.19

Scale: 1:2

CAD Ref.: FRAWBW-CJ

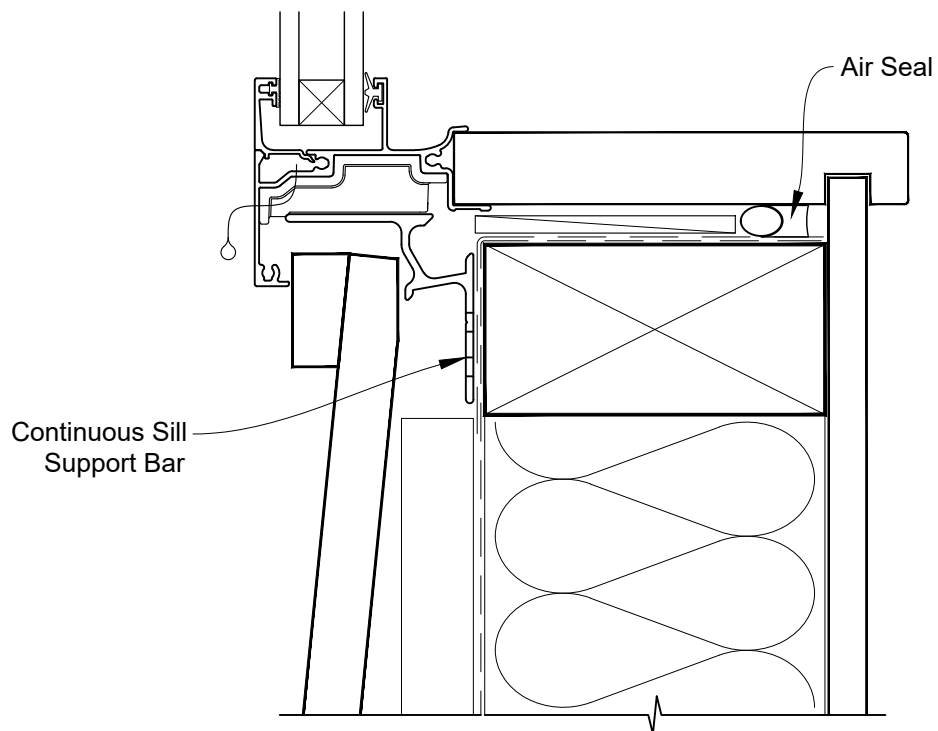


**INSTALLATION DETAIL - FIRST RESIDENTIAL
AWNING WINDOW ON BEVELBACK WEATHERBOARD
CAVITY CONSTRUCTION**

Date: 01.04.19

Scale: 1:2

CAD Ref.: FRAWBW-CS

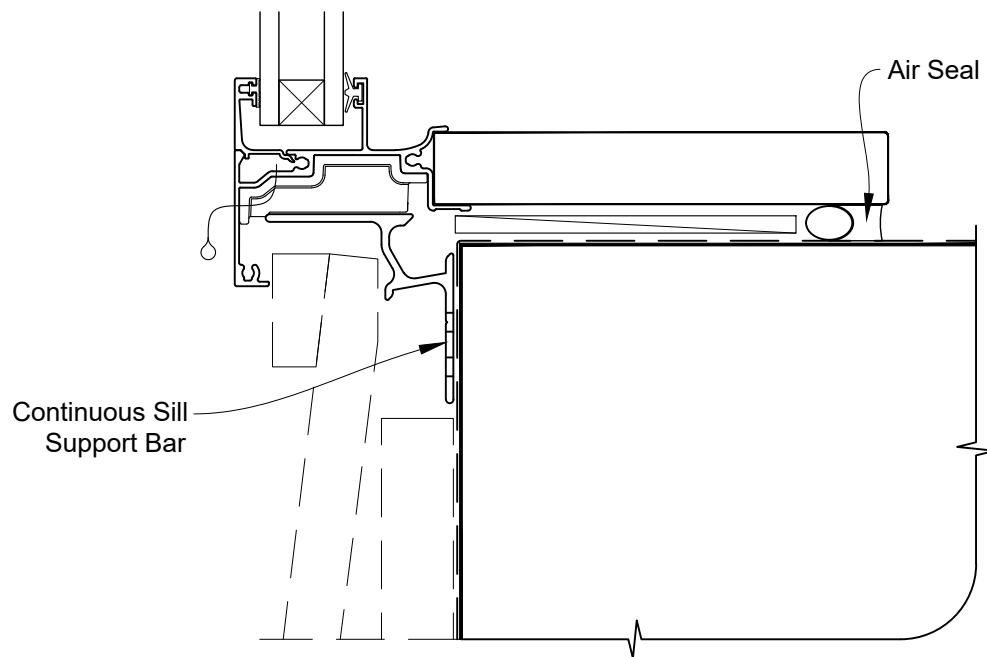


**INSTALLATION DETAIL - FIRST RESIDENTIAL
AWNING WINDOW ON BEVELBACK WEATHERBOARD
CAVITY CONSTRUCTION**

Date: 01.04.19

Scale: 1:2

CAD Ref.: FRAWBW-CS2

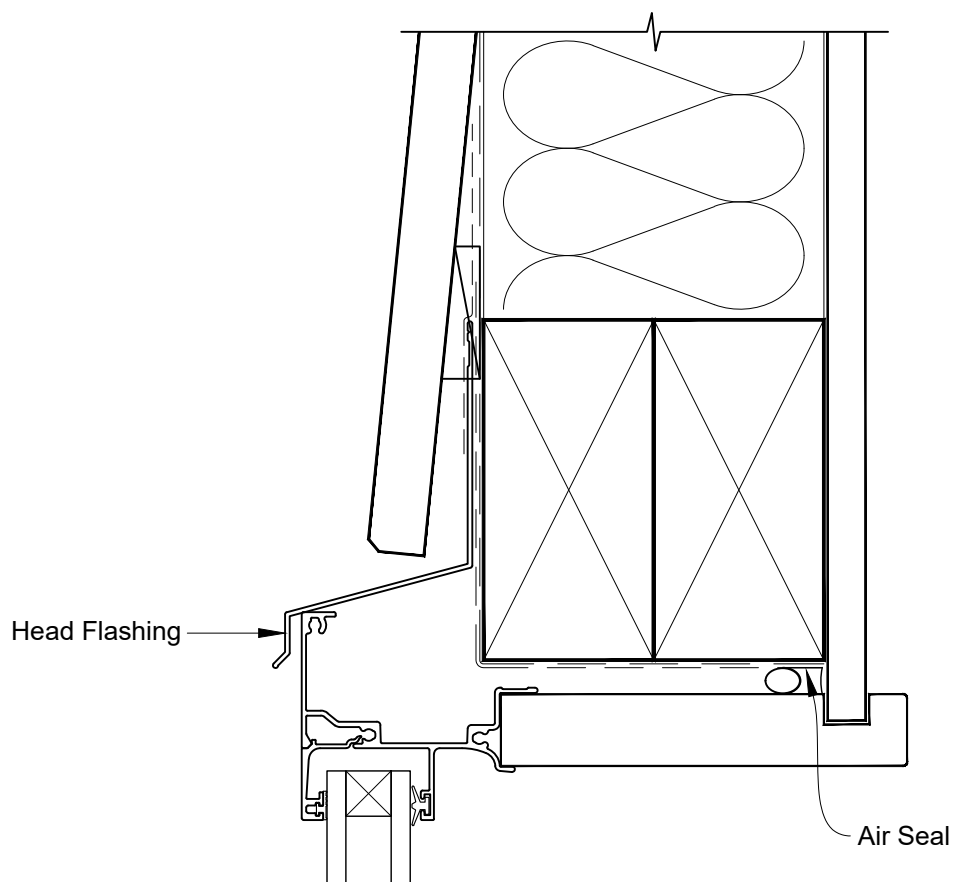


**INSTALLATION DETAIL - FIRST RESIDENTIAL
AWNING WINDOW ON BEVELBACK WEATHERBOARD
DIRECT FIXED CLADDING**

Date: 01.04.19

Scale: 1:2

CAD Ref.: FRAWBW-DH

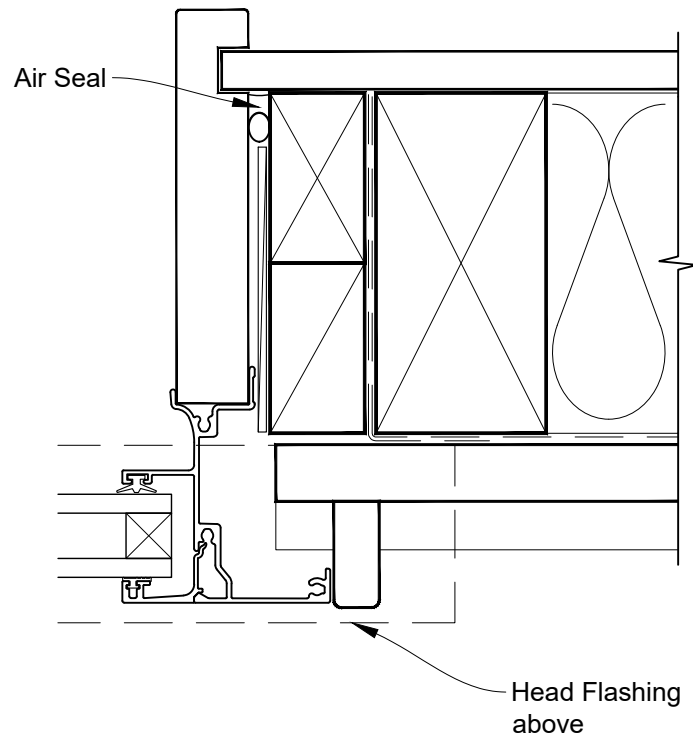


**INSTALLATION DETAIL - FIRST RESIDENTIAL
AWNING WINDOW ON BEVELBACK WEATHERBOARD
DIRECT FIXED CLADDING**

Date: 01.04.19

Scale: 1:2

CAD Ref.: FRAWBW-DJ

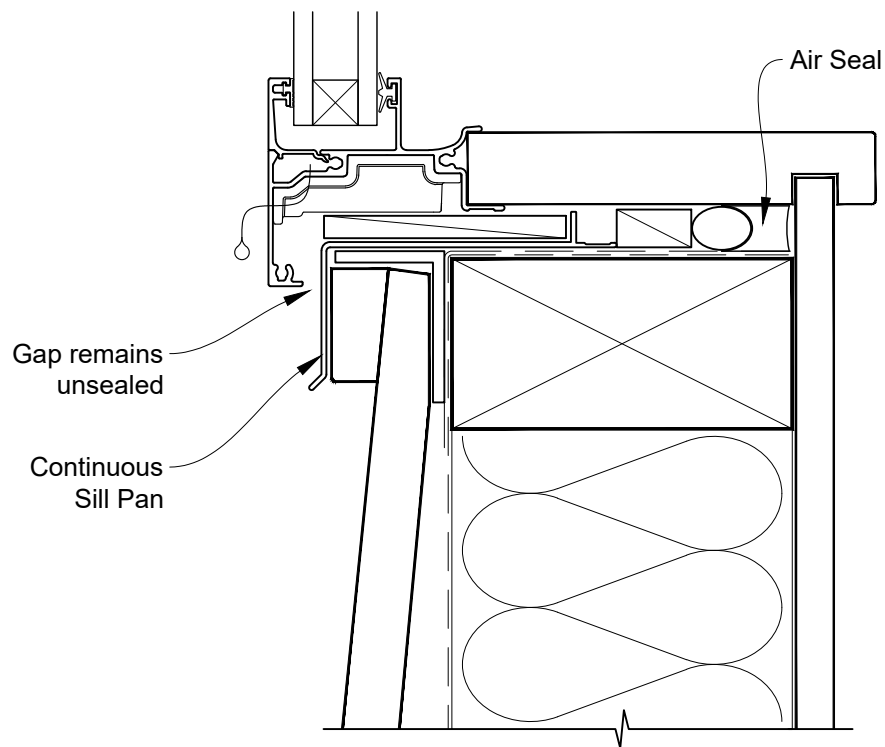


**INSTALLATION DETAIL - FIRST RESIDENTIAL
AWNING WINDOW ON BEVELBACK WEATHERBOARD
DIRECT FIXED CLADDING**

Date: 01.04.19

Scale: 1:2

CAD Ref.: FRAWBW-DS



**INSTALLATION DETAIL - FIRST RESIDENTIAL
AWNING WINDOW ON BEVELBACK WEATHERBOARD
DIRECT FIXED CLADDING**

Date: 01.04.19

Scale: 1:2

CAD Ref.: FRAWBW-DS2

