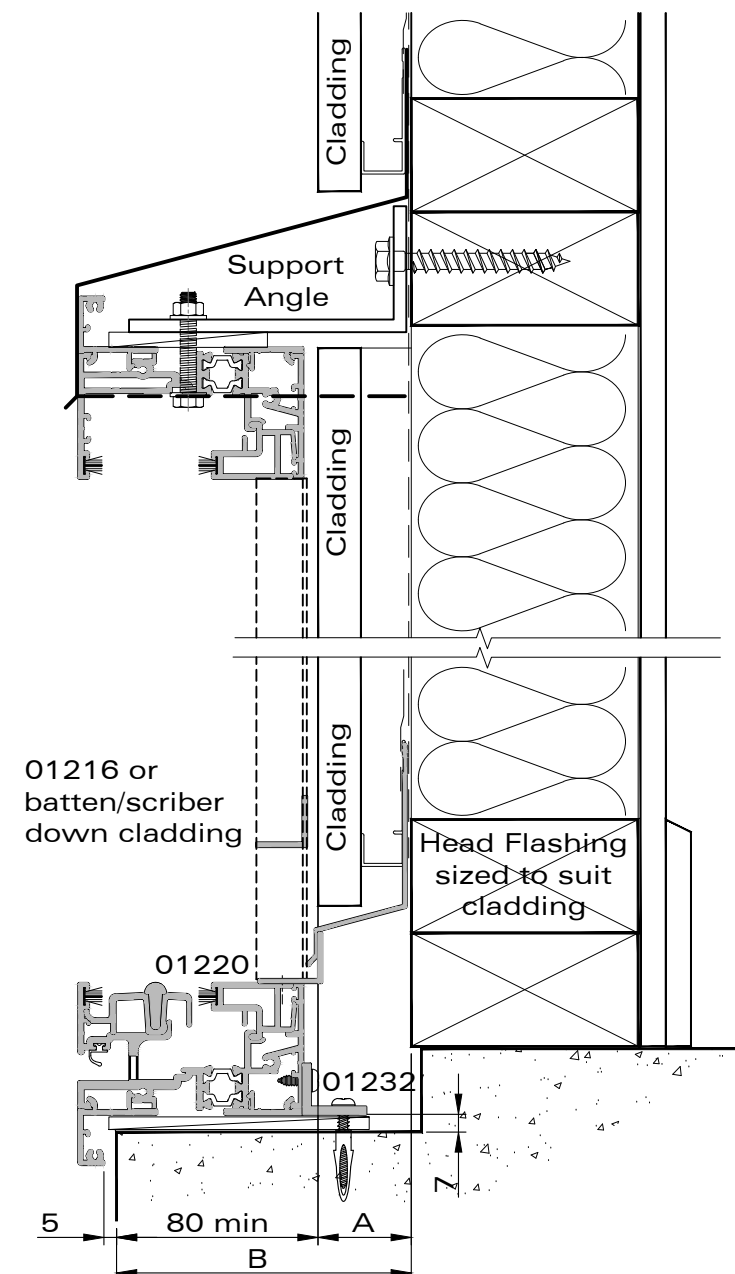
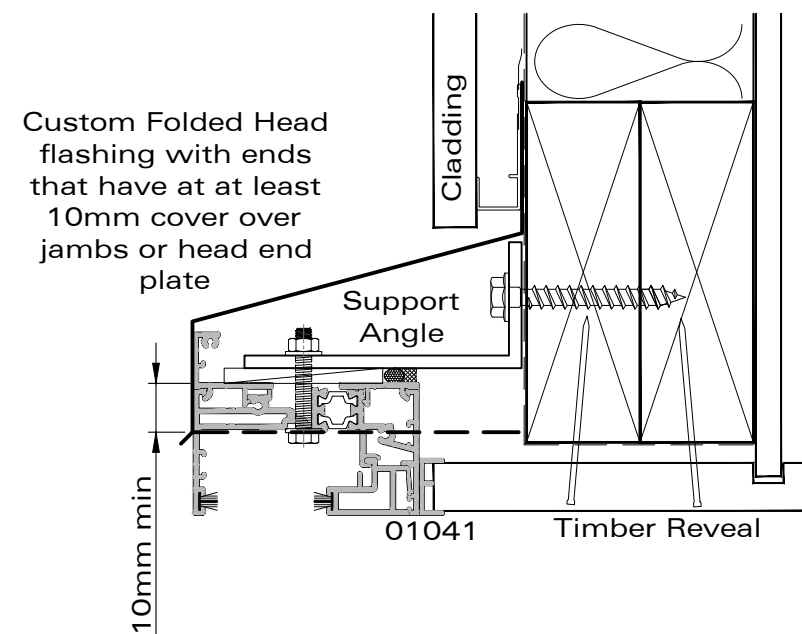
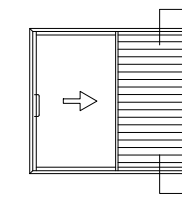
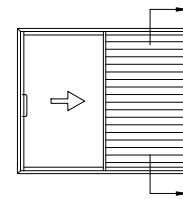
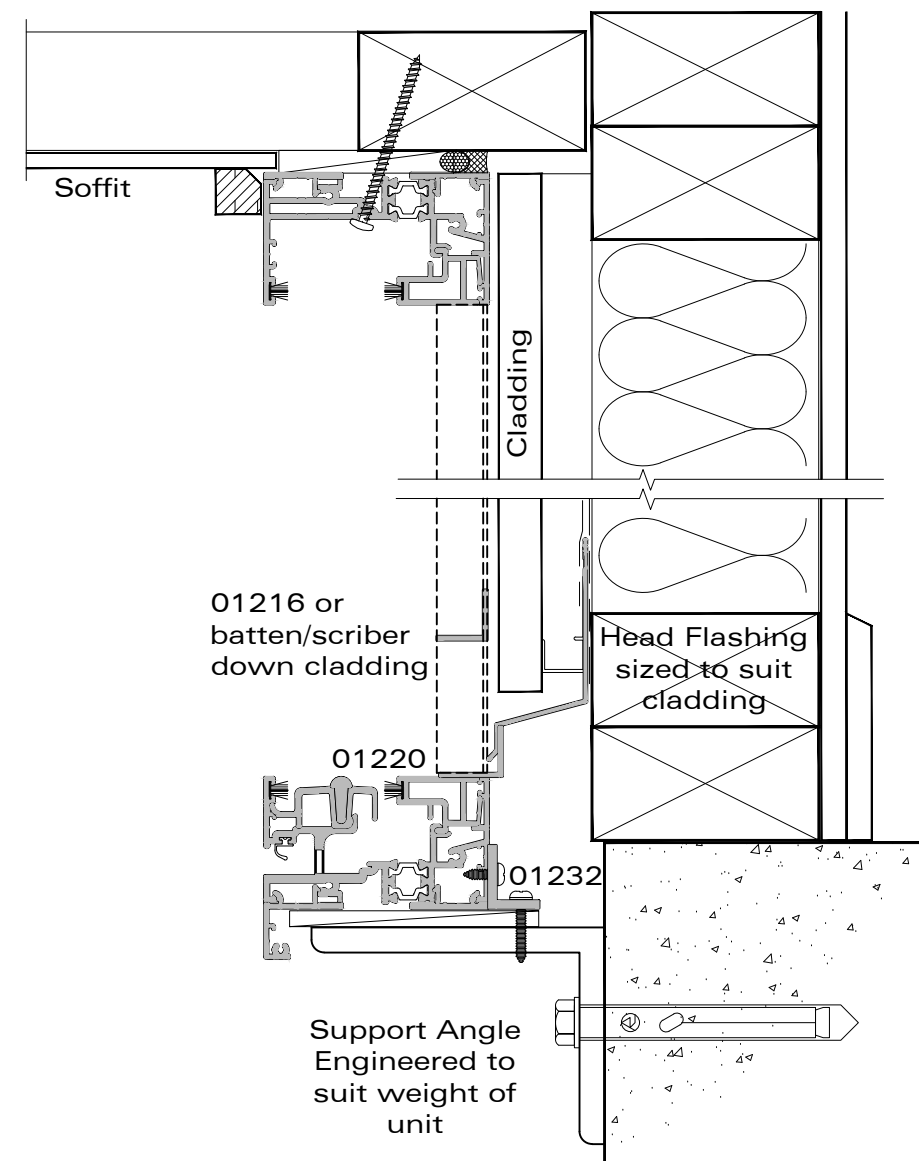


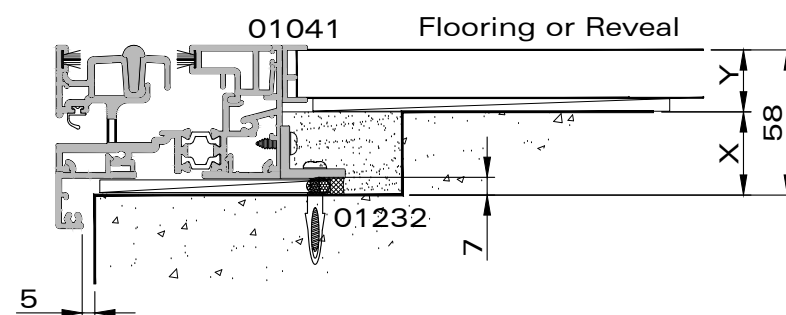
Details on this page are indicative only. Responsibility for flashing design and cladding junctions remain with the designer of the building. Support angles and built out framing will need to be engineered to suit the application.



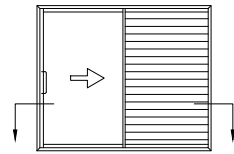
Rebate Depth (B) = 80 + (A) Cladding Thickness



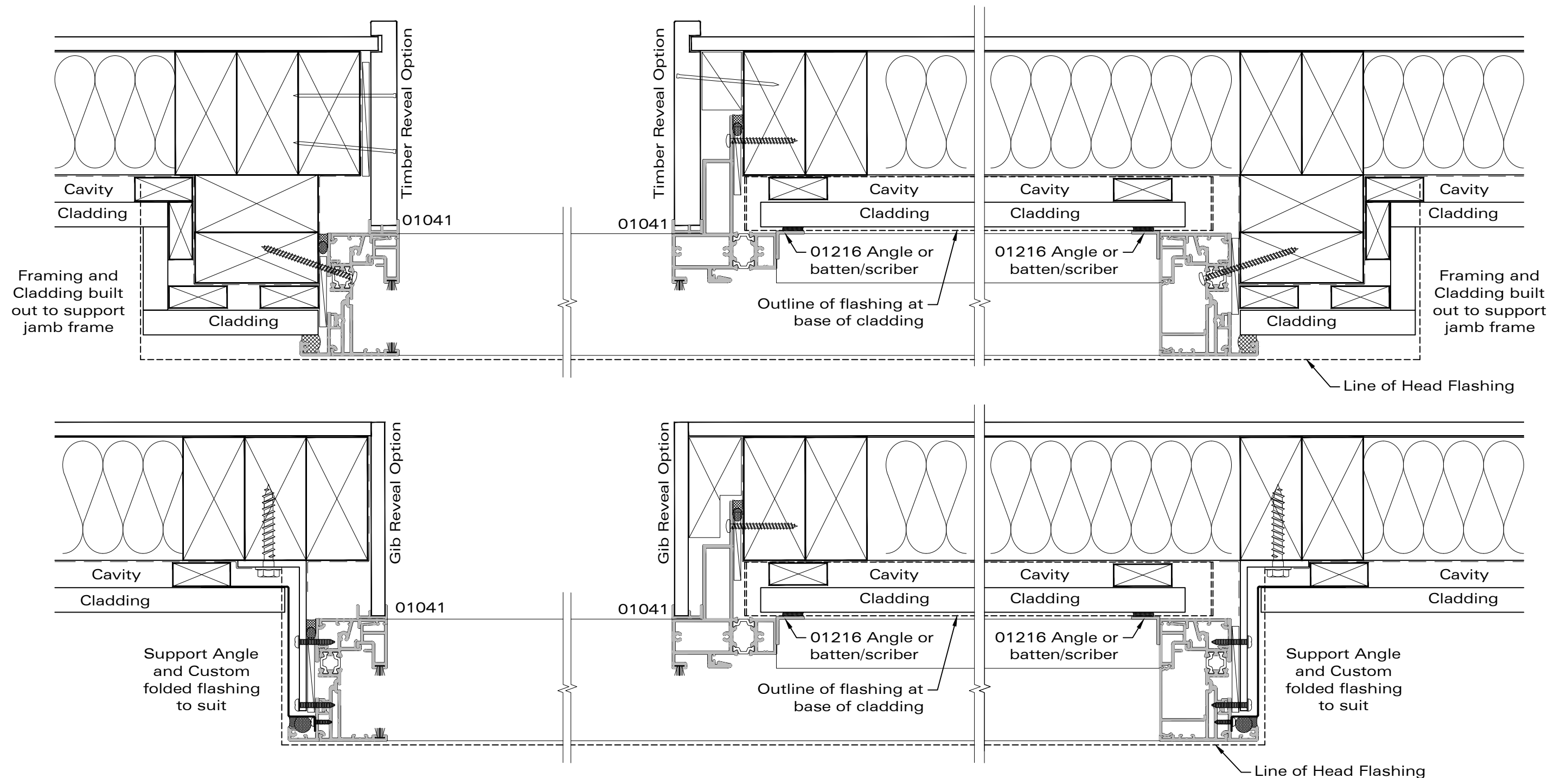
Alternative Sill and Head Support Options

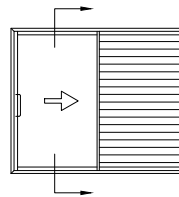


Rebate Height (X) = 58 - (Y) Flooring Thickness

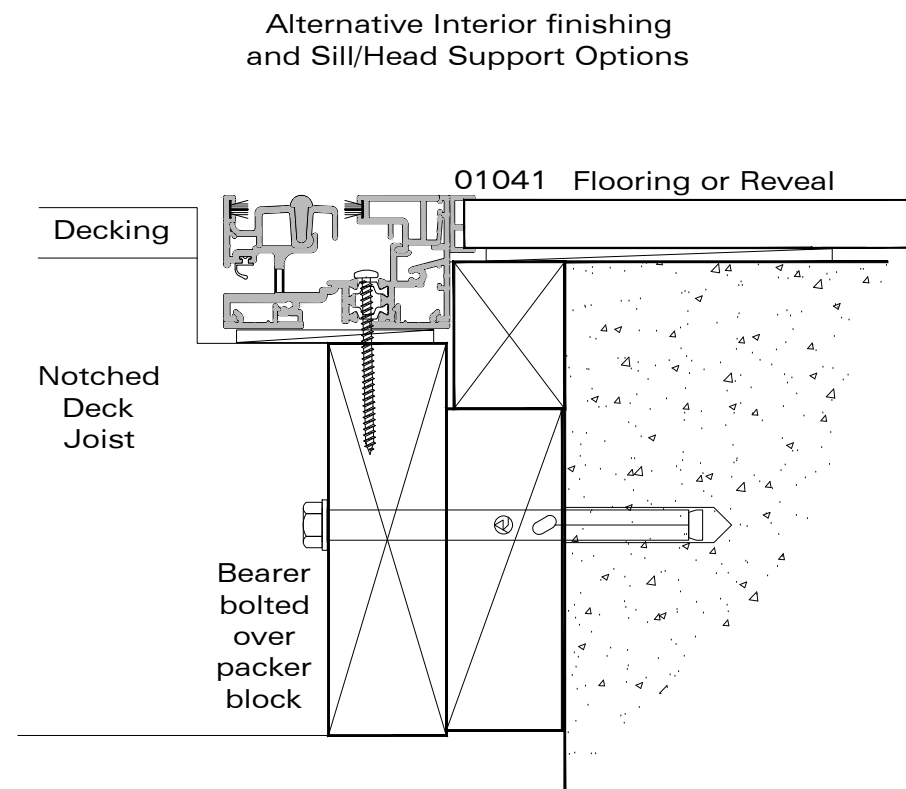
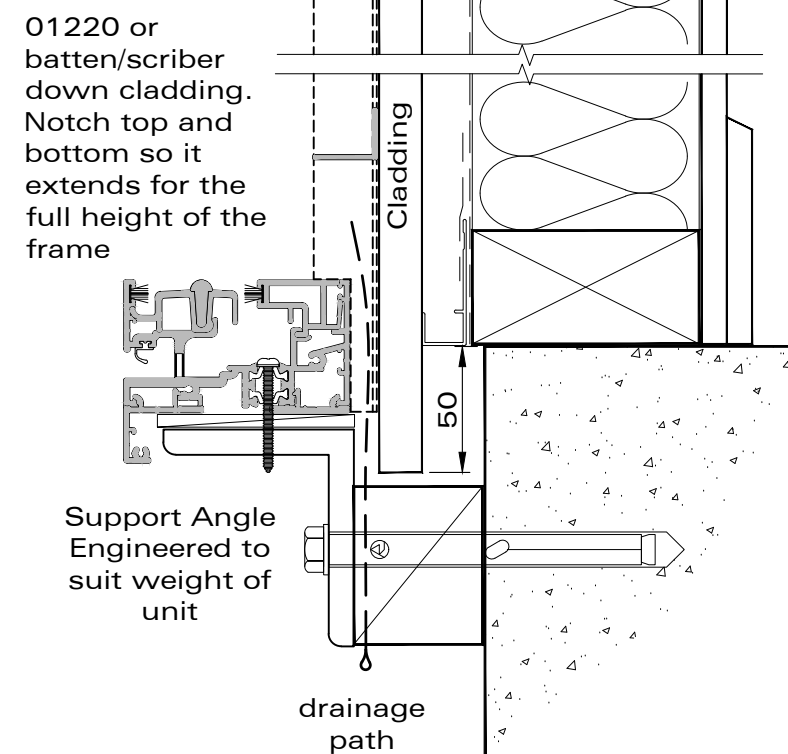
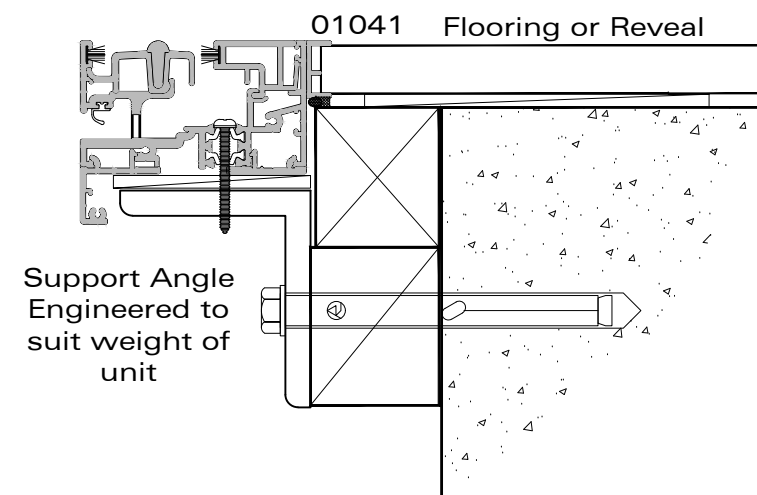
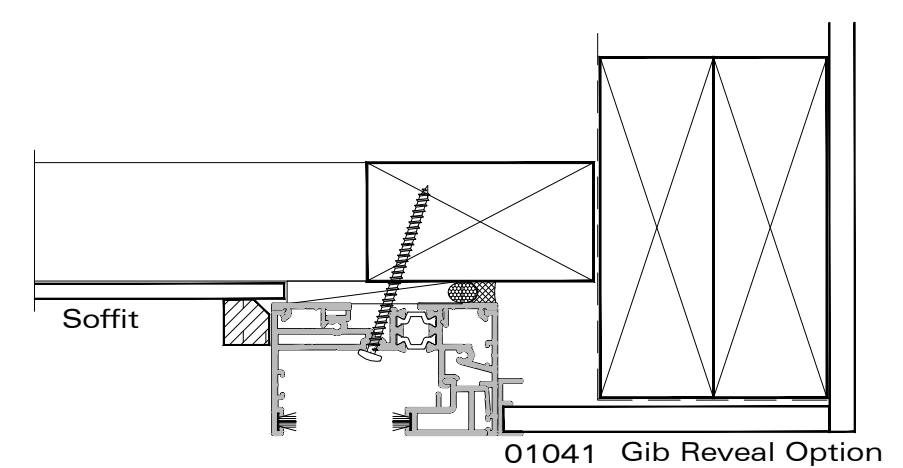
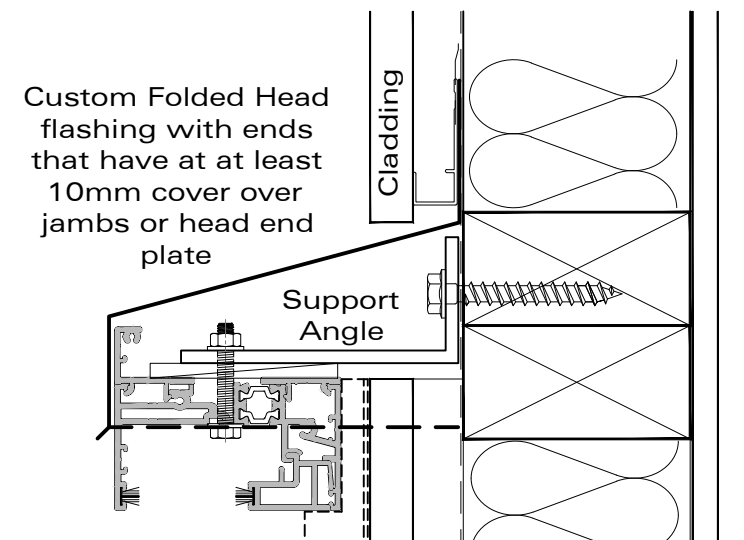
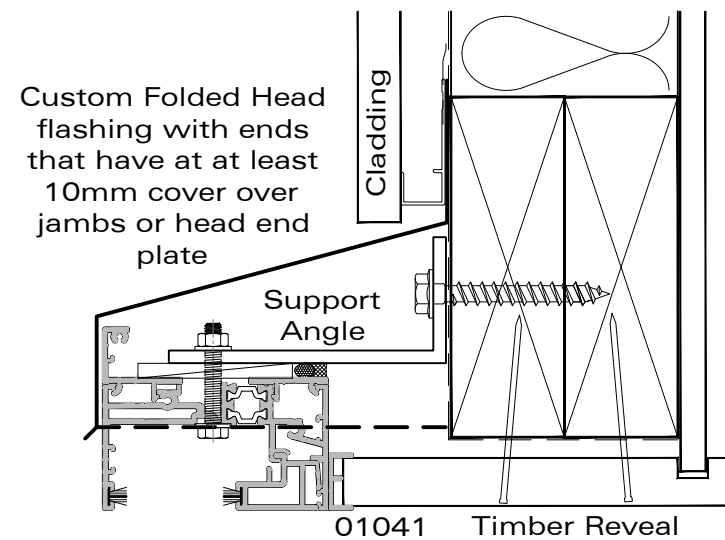
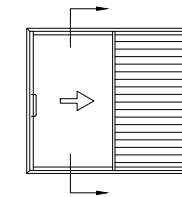
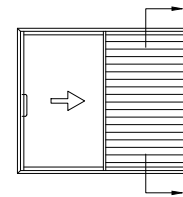


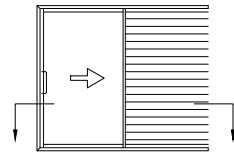
Details on this page are indicative only. Responsibility for flashing design and cladding junctions remain with the designer of the building. Support angles and built out framing will need to be engineered to suit the application.



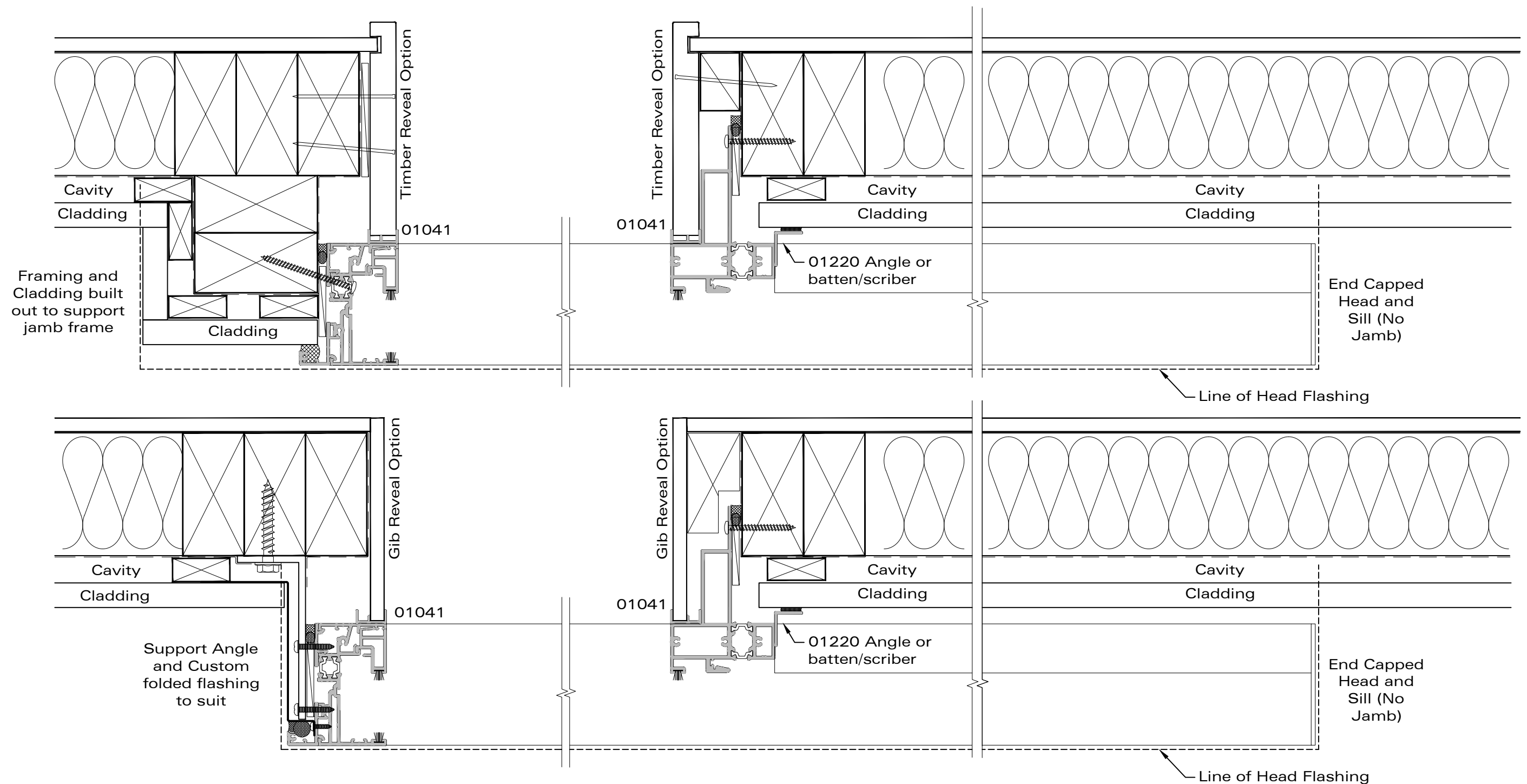


Details on this page are indicative only. Responsibility for flashing design and cladding junctions remain with the designer of the building. Support angles and built out framing will need to be engineered to suit the application.





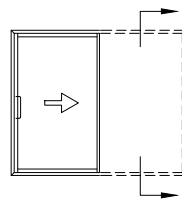
Details on this page are indicative only. Responsibility for flashing design and cladding junctions remain with the designer of the building. Support angles and built out framing will need to be engineered to suit the application.



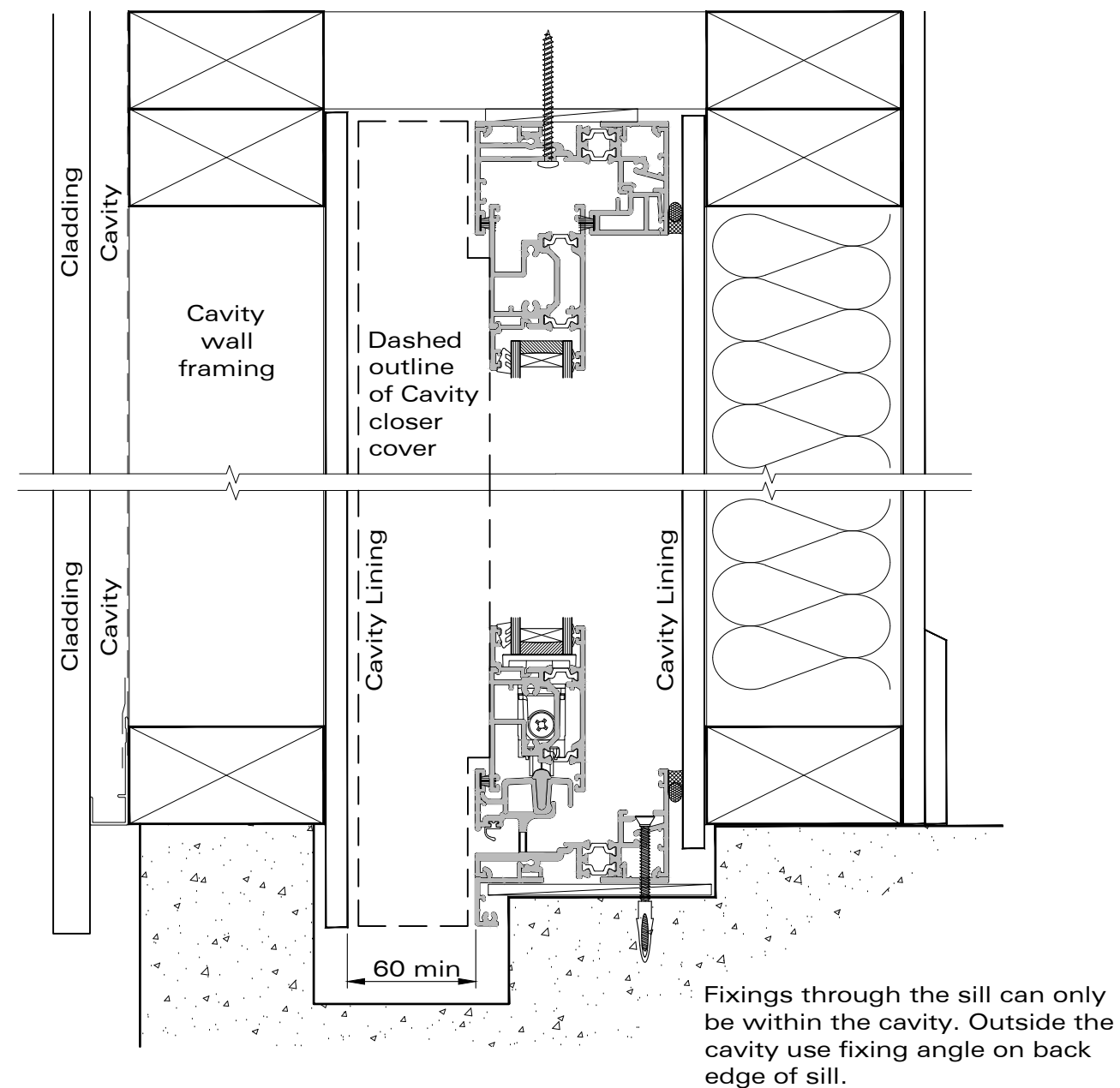


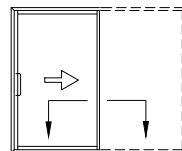
ARCHITECTURAL THERMAL HEART OVERWALL SLIDER INSTALLATION DETAIL - CAVITY OPTION 1

Date: 17.05.24 Scale: 1:3 CAD Ref.: TAOW1P-05



Details on this page are indicative only. Responsibility for flashing design and cladding junctions remain with the designer of the building.
it is optional whether a jamb frame is used inside the cavity. Refer to over wall Sectionals for ideas on detailing the frame outside of the cavity.

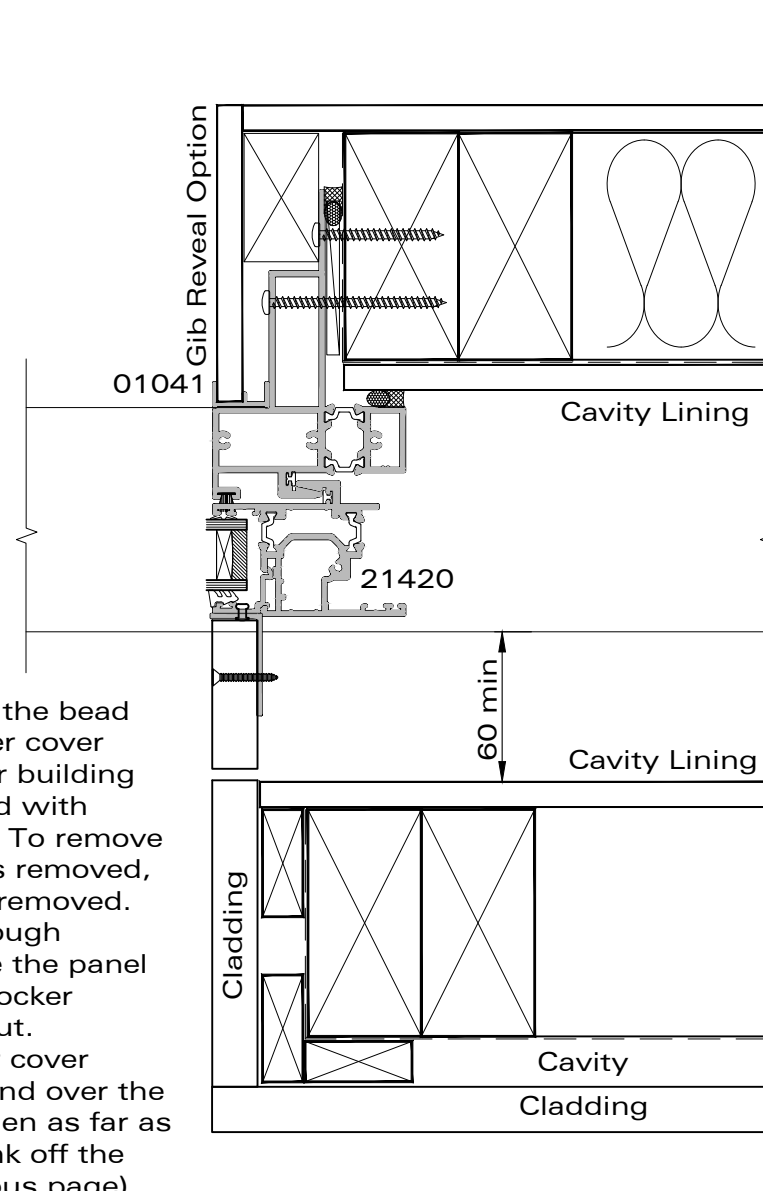




Details on this page are indicative only. Responsibility for flashing design and cladding junctions remain with the designer of the building.

it is optional whether a jamb frame is used inside the cavity. Refer to over wall Sectionals for ideas on detailing the locking end Jamb Frame.

Angle rivetted to the bead only. Cavity closer cover (cladding or other building material) attached with accessible fixings. To remove panel the cover is removed, then the bead is removed. There is then enough clearance to slide the panel clear of the interlocker mullion and lift out. The Cavity closer cover material will extend over the panel rails and then as far as necessary to blank off the cavity (see previous page).



Angle rivetted to the bead only. Cavity closer cover (ripped angle or folded Aluminium sheet) attached with accessible fixings. To remove panel the cover is removed, then the bead is removed. There is then enough clearance to slide the panel clear of the interlocker mullion and lift out. The Cavity closer cover material will extend over the panel rails and then as far as necessary to blank off the cavity (see previous page).

