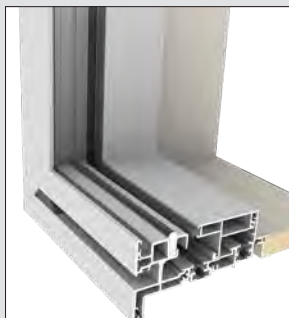


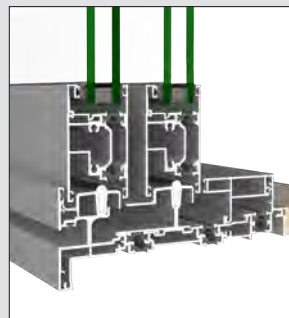
Sliding window sill and panel rail.

Key Features

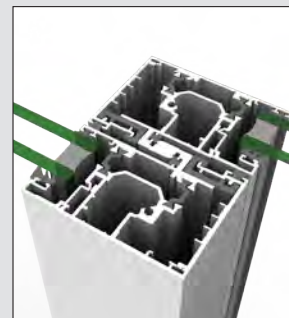
- An exterior sliding track as standard
- Ideal for non-projecting or servery windows
- Smooth sliding action
- Interlocker stiles are fully thermally isolated to maximise thermal efficiency
- Interlocker stiles are flush in the closed position
- Wide opening is possible in bi-parting or stacking configurations
- Stiles and rails feature slender sightlines
- Corner sliding windows (90°) are available with no corner post (exterior and interior corners)
- Maximum glass thickness of 44mm IGU - compliance with NZBC clause H1 Energy Efficiency requires high performing Low-E double glazing.



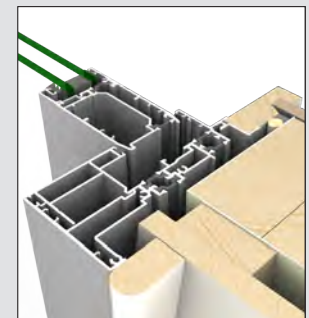
Sliding window sill (single slider).



Multi slider window track and panel rails.



Fully thermally isolated interlocker stiles in closed position.



The sliding window jamb section.

Specifications

Dimensions

Metro Series ThermalHEART® sliding windows can be made to large door-size panels if needed, because they are based on the sliding door system. Panels 2000mm high x 1500mm wide would conform

Maximum Glass Thickness

44mm IGU

Thermal Values

Complies with the Construction R-values provided in NZBC clause H1, Appendix E, table E1.1.1.

Performance

Tested to Extra High wind zone

Design Considerations

- Sliding windows are good for applications where wide opening, non-projecting windows are wanted
- A good option for servery windows
- Consider the ease of reaching to the window catch if the sliding panel is placed beyond a bench
- Larger sliding window frames may require a thicker wall.