

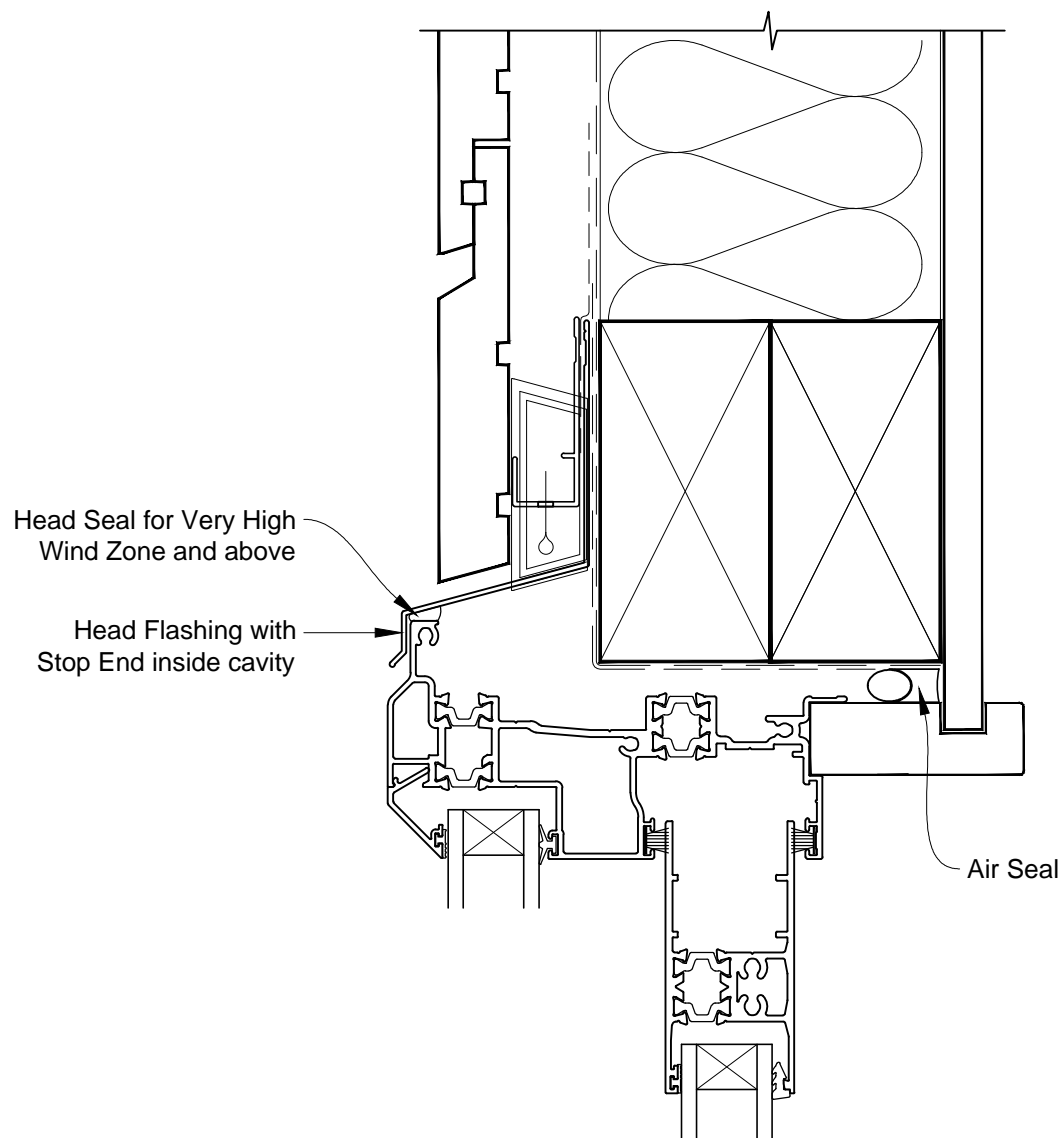


# INSTALLATION DETAIL - ALTherm RESIDENTIAL THERMAL HEART - SLIDING WINDOW ON RUSTICATED WEATHERBOARD CAVITY CONSTRUCTION

Date: 01.03.14

Scale: 1:2

CAD Ref.: ATSWRW-CH



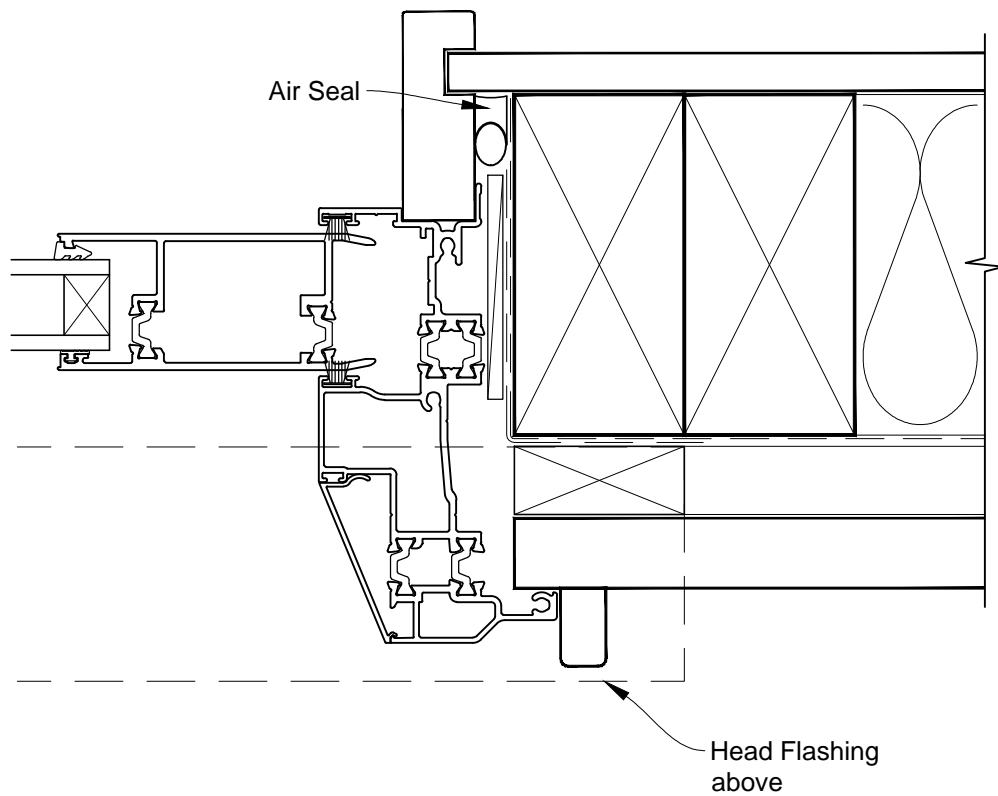


# INSTALLATION DETAIL - ALTherm RESIDENTIAL THERMAL HEART - SLIDING WINDOW ON RUSTICATED WEATHERBOARD CAVITY CONSTRUCTION

Date: 01.03.14

Scale: 1:2

CAD Ref.: ATSWRW-CJ



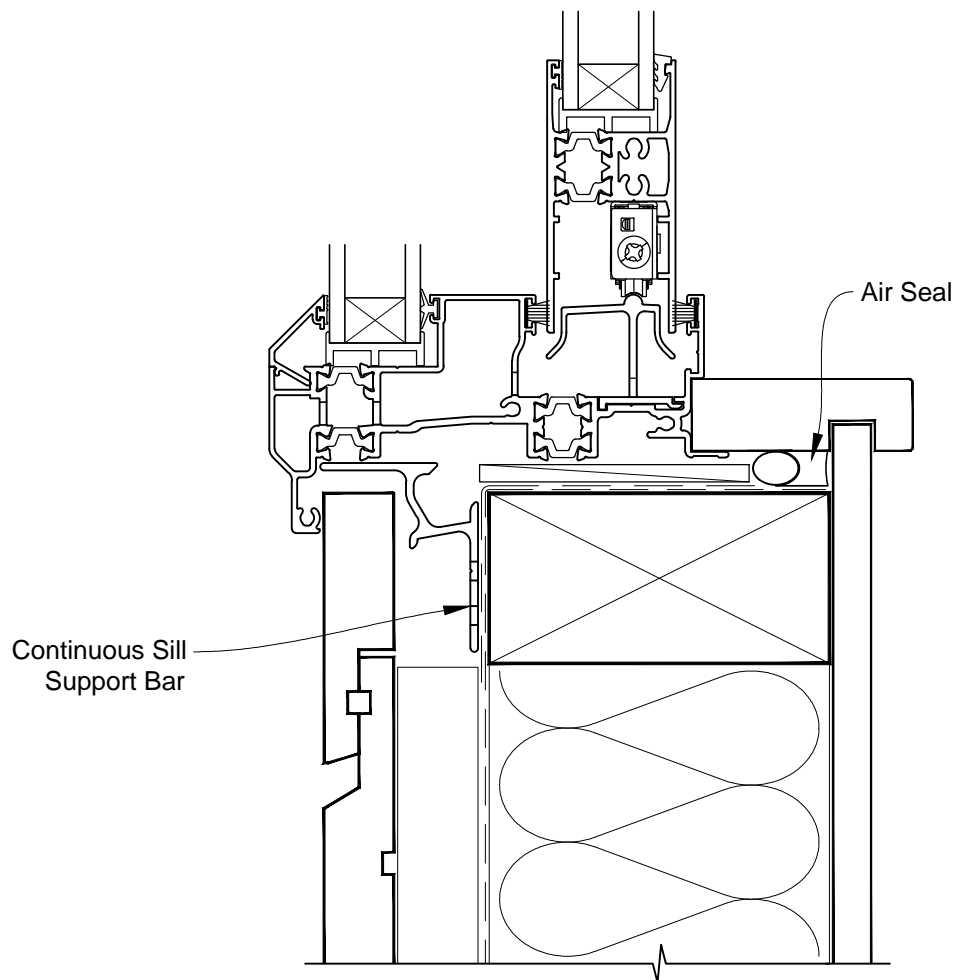


# INSTALLATION DETAIL - ALTherm RESIDENTIAL THERMAL HEART - SLIDING WINDOW ON RUSTICATED WEATHERBOARD CAVITY CONSTRUCTION

Date: 01.03.14

Scale: 1:2

CAD Ref.: ATSWRW-CS



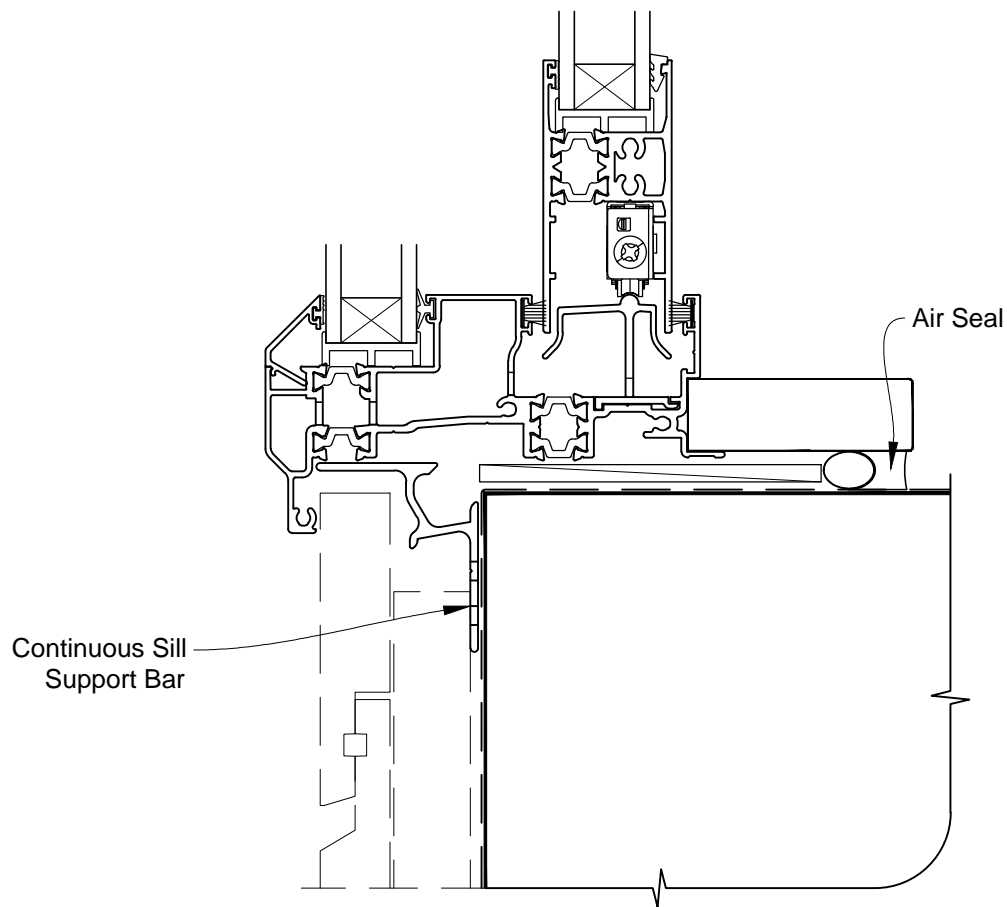


# INSTALLATION DETAIL - ALThERM RESIDENTIAL THERMAL HEART - SLIDING WINDOW ON RUSTICATED WEATHERBOARD CAVITY CONSTRUCTION

Date: 01.03.14

Scale: 1:2

CAD Ref.: ATSWRW-CS2



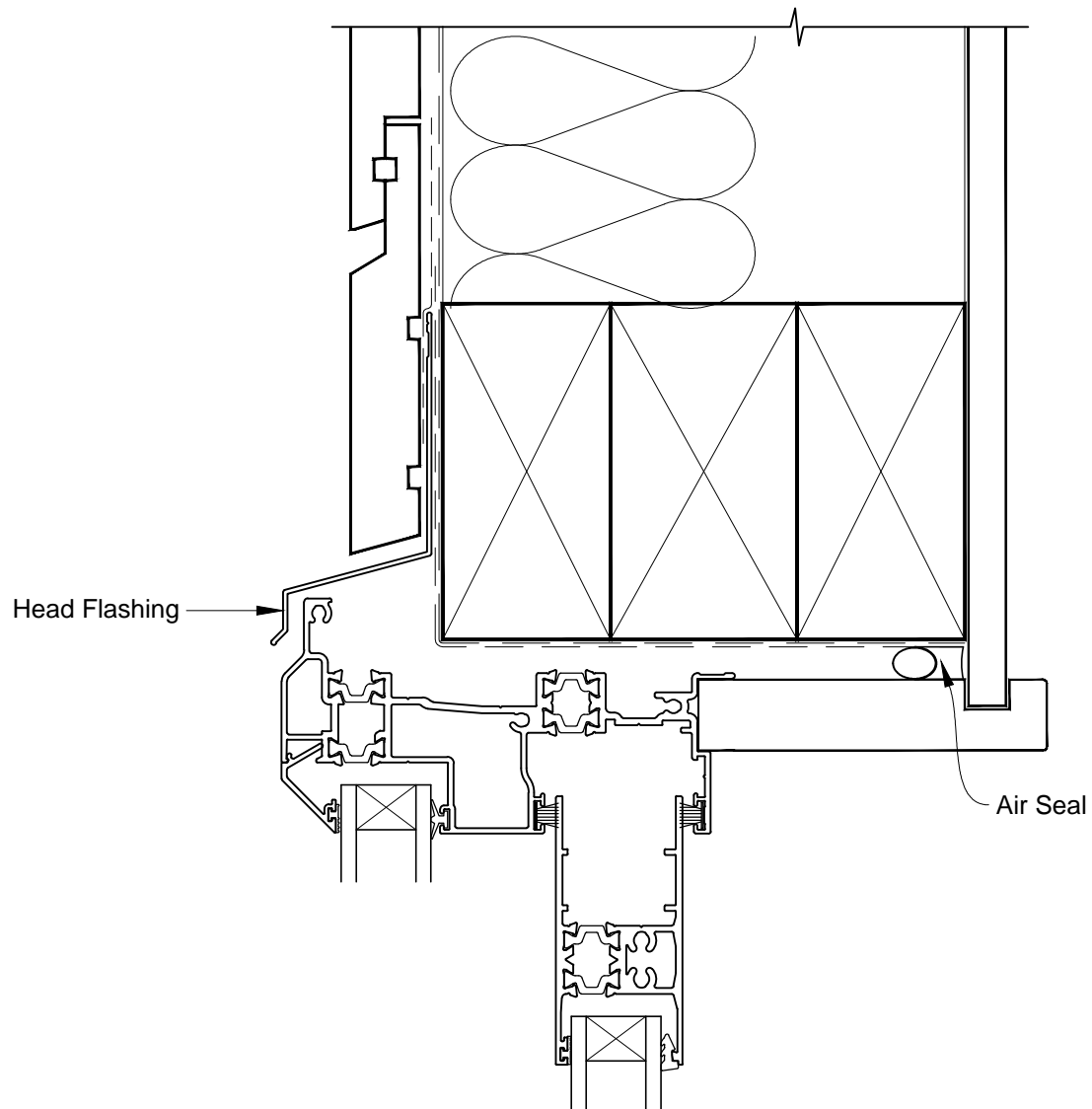


# INSTALLATION DETAIL - ALTherm RESIDENTIAL THERMAL HEART - SLIDING WINDOW ON RUSTICATED WEATHERBOARD DIRECT FIXED CLADDING

Date: 01.03.14

Scale: 1:2

CAD Ref.: ATSWRW-DH



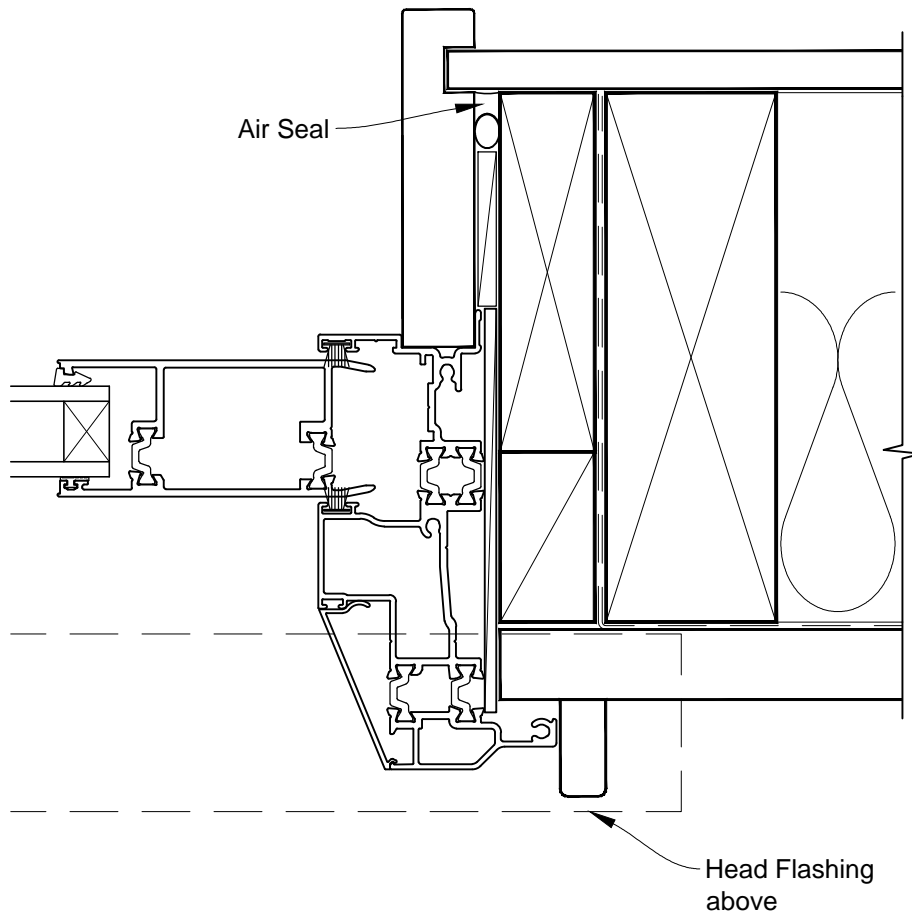


# INSTALLATION DETAIL - ALTherm RESIDENTIAL THERMAL HEART - SLIDING WINDOW ON RUSTICATED WEATHERBOARD DIRECT FIXED CLADDING

Date: 01.03.14

Scale: 1:2

CAD Ref.: ATSWRW-DJ



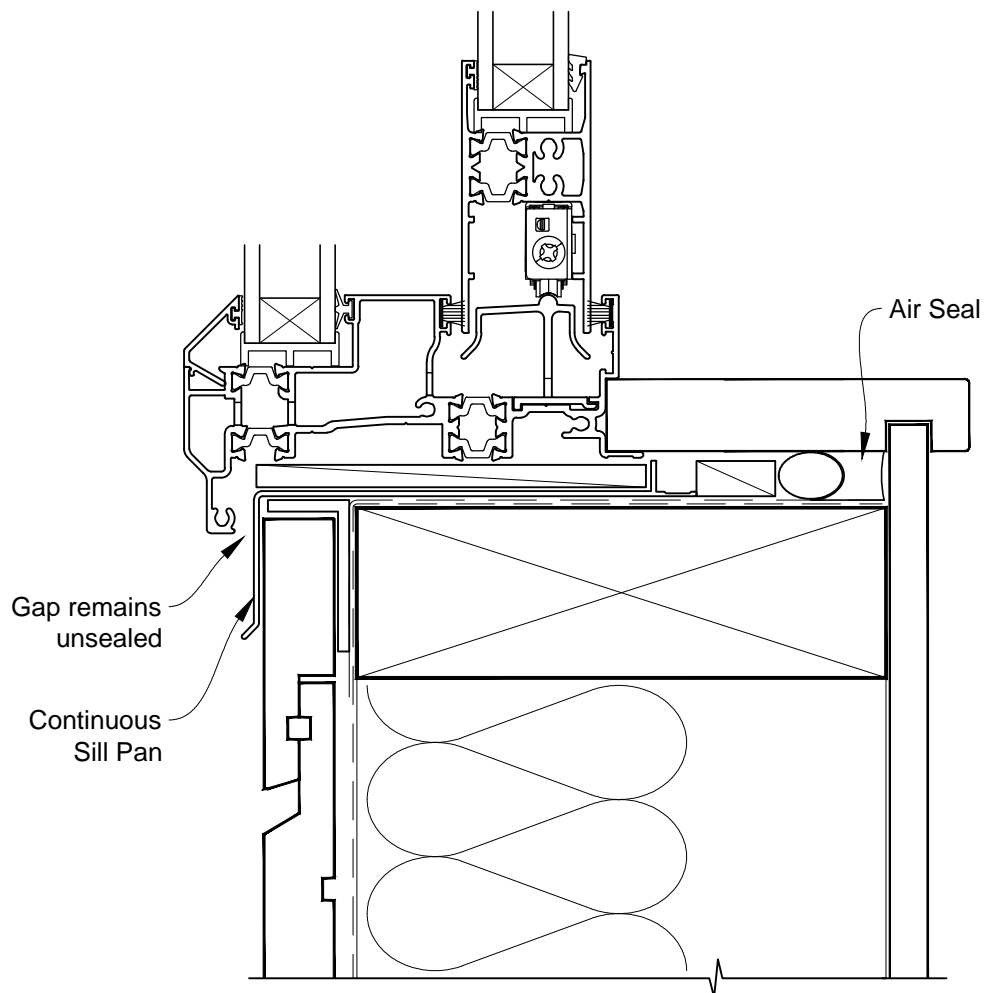


# INSTALLATION DETAIL - ALTherm RESIDENTIAL THERMAL HEART - SLIDING WINDOW ON RUSTICATED WEATHERBOARD DIRECT FIXED CLADDING

Date: 01.03.14

Scale: 1:2

CAD Ref.: ATSWRW-DS





# INSTALLATION DETAIL - ALTherm RESIDENTIAL THERMAL HEART - SLIDING WINDOW ON RUSTICATED WEATHERBOARD DIRECT FIXED CLADDING

Date: 01.03.14

Scale: 1:2

CAD Ref.: ATSWRW-DS2

