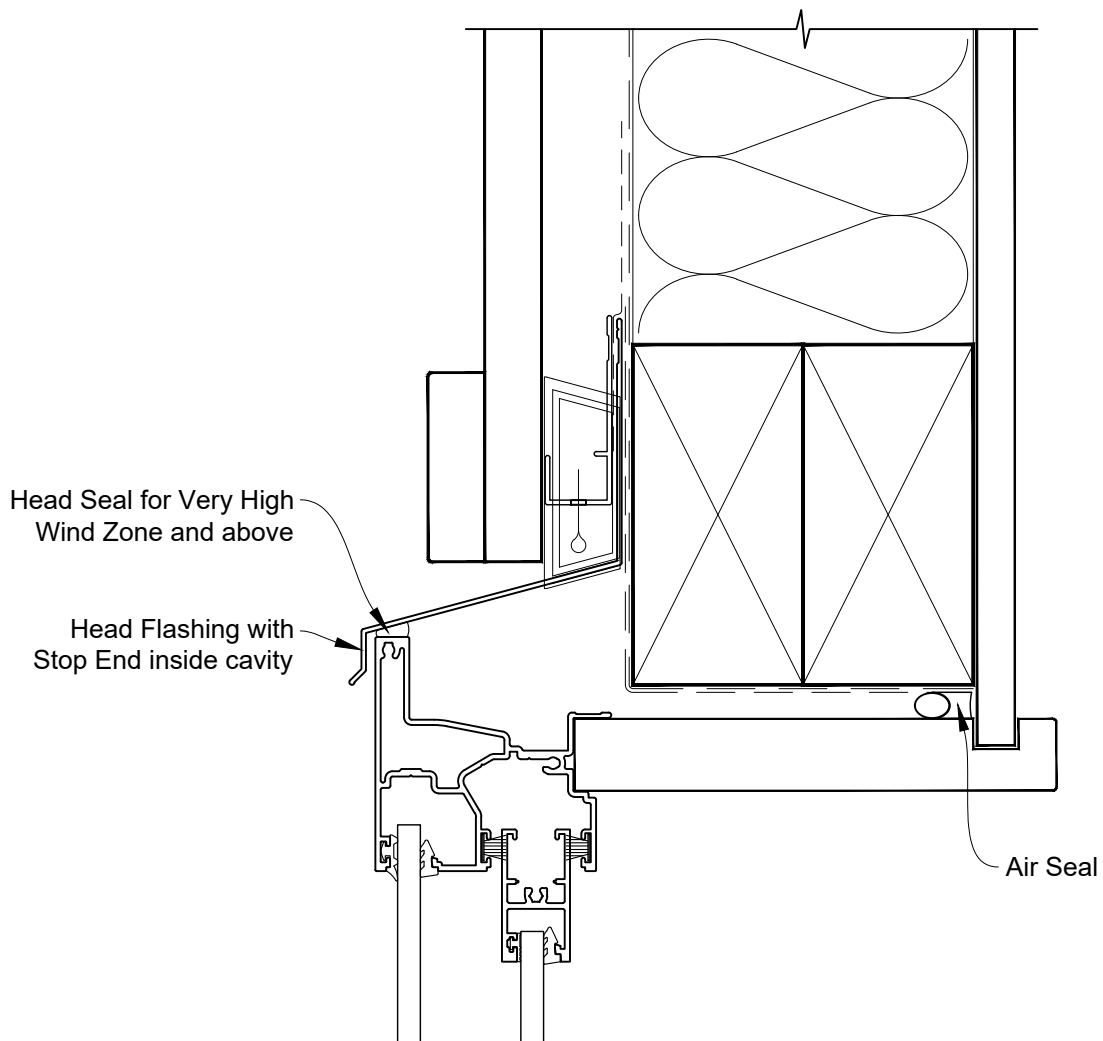


**INSTALLATION DETAIL - ALTHERM RESIDENTIAL  
SLIMLINE SLIDING WINDOW ON BOARD & BATTEN  
CAVITY CONSTRUCTION**

Date: 01.04.19

Scale: 1:2

CAD Ref.: ARSLBB-CH

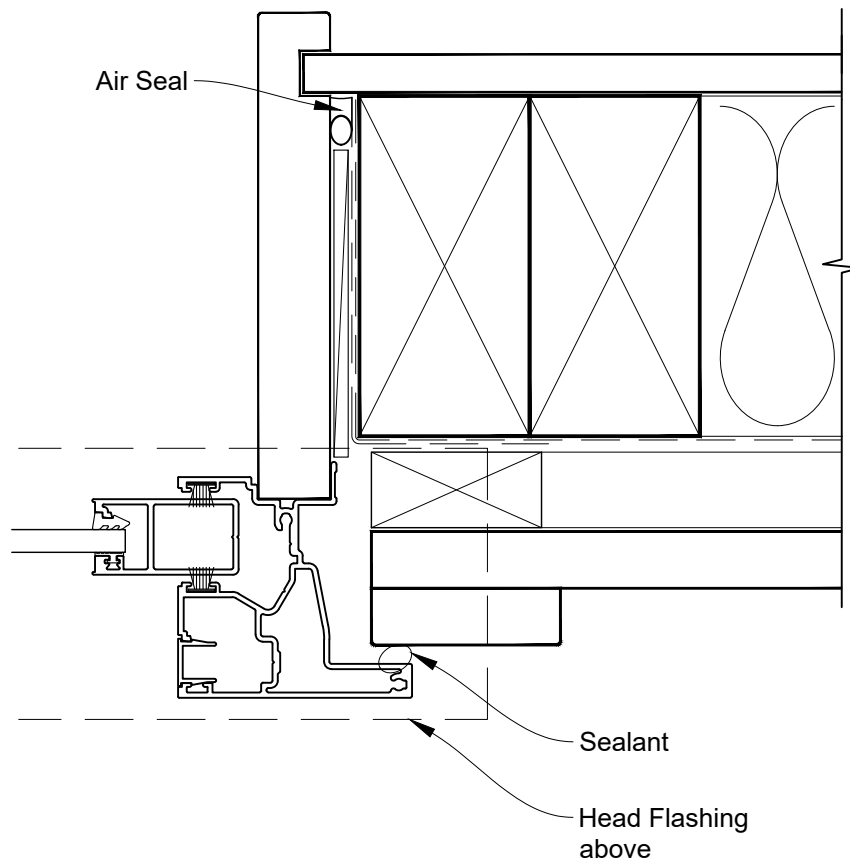


# INSTALLATION DETAIL - ALTHERM RESIDENTIAL SLIMLINE SLIDING WINDOW ON BOARD & BATTEN CAVITY CONSTRUCTION

Date: 01.04.19

Scale: 1:2

CAD Ref.: ARSLBB-CJ

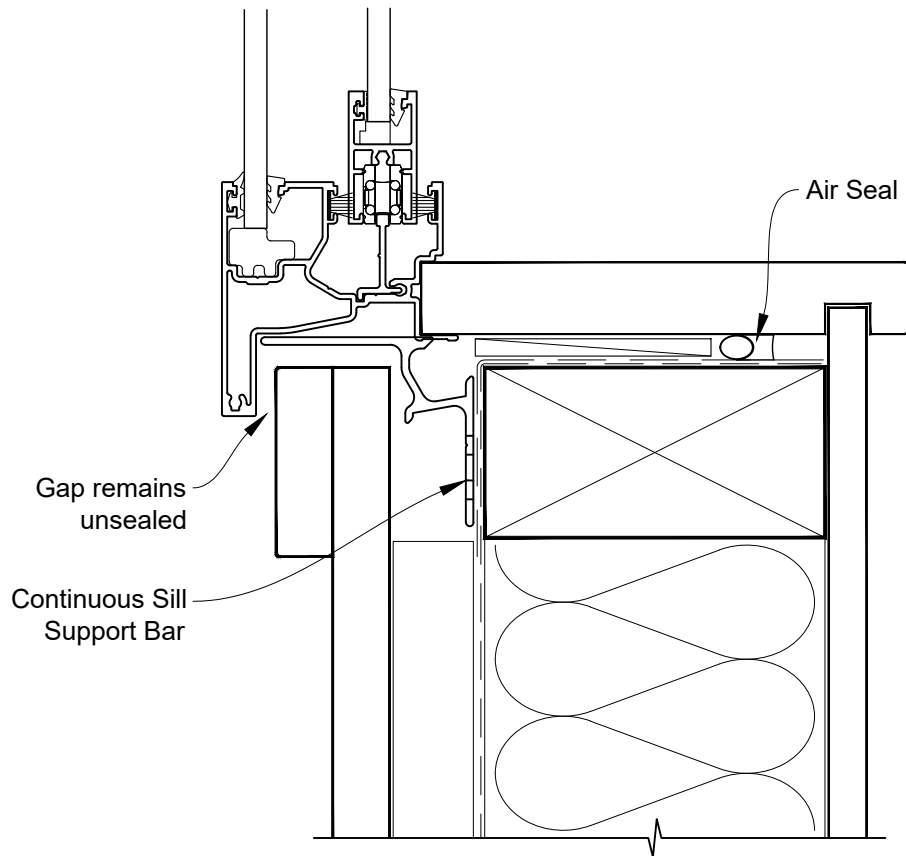


# INSTALLATION DETAIL - ALTHERM RESIDENTIAL SLIMLINE SLIDING WINDOW ON BOARD & BATTEN CAVITY CONSTRUCTION

Date: 01.04.19

Scale: 1:2

CAD Ref.: ARSLBB-CS

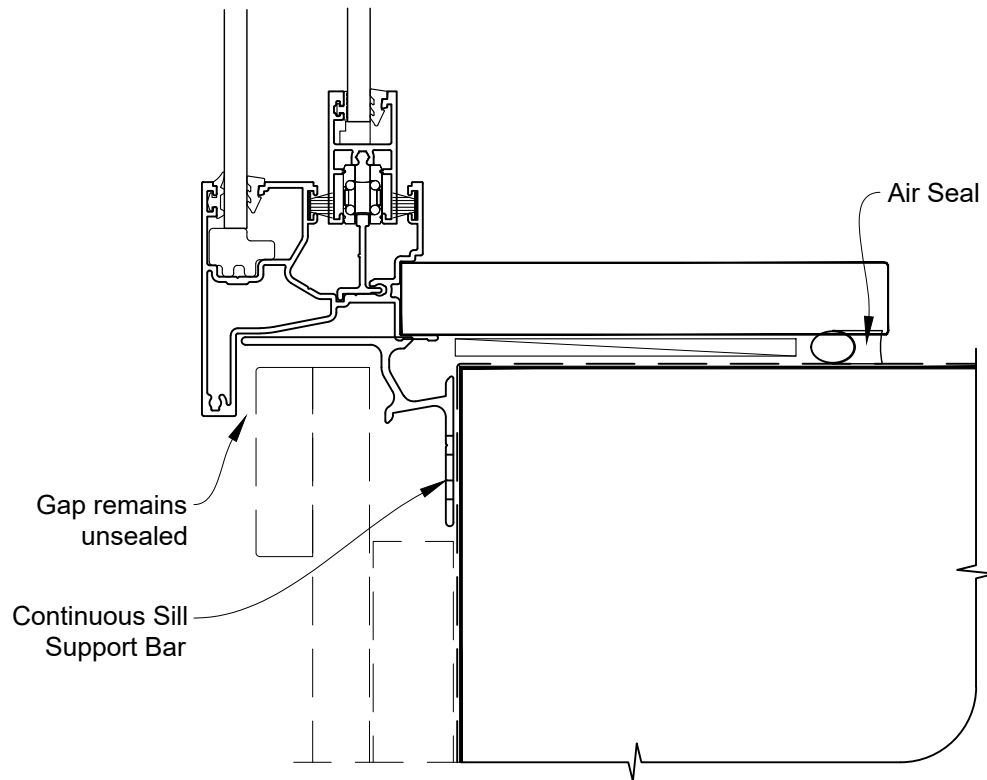


**INSTALLATION DETAIL - ALTHERM RESIDENTIAL  
SLIMLINE SLIDING WINDOW ON BOARD & BATTEN  
CAVITY CONSTRUCTION**

Date: 01.04.19

Scale: 1:2

CAD Ref.: ARSLBB-CS2

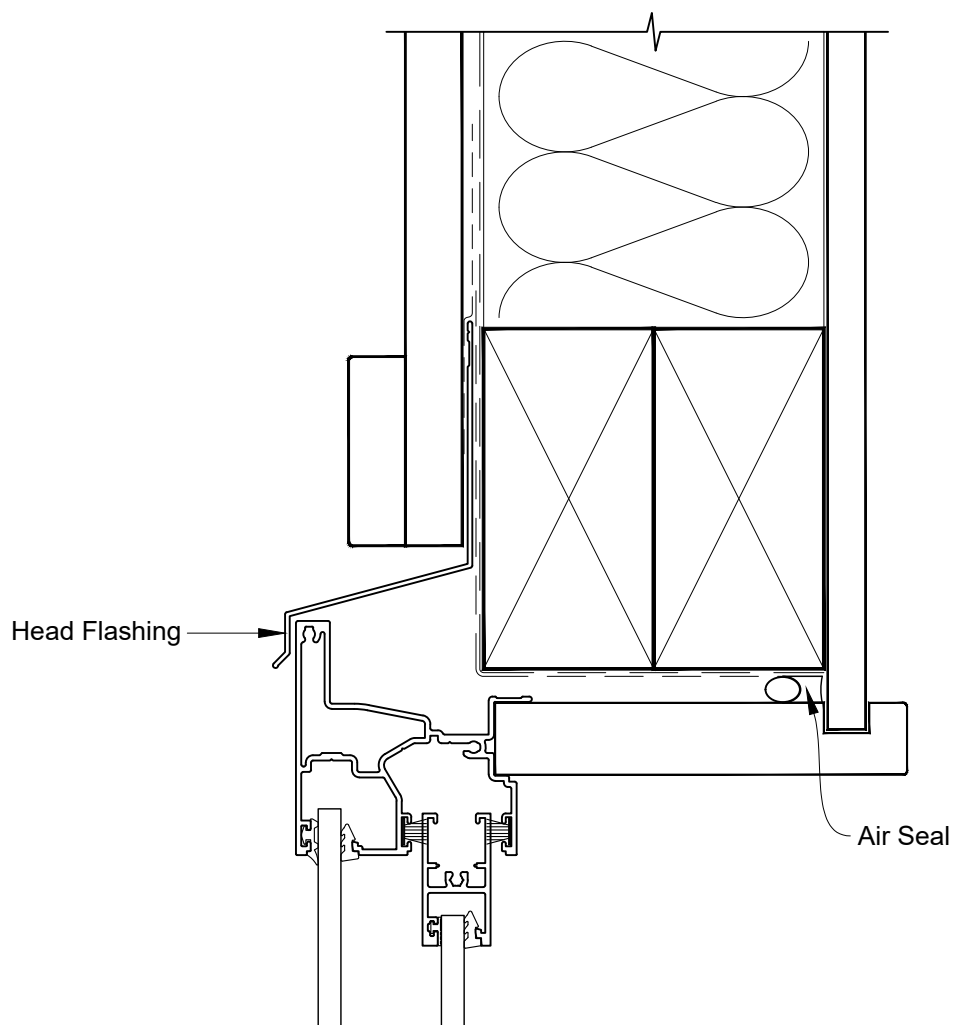


**INSTALLATION DETAIL - ALTHERM RESIDENTIAL  
SLIMLINE SLIDING WINDOW ON BOARD & BATTEN  
DIRECT FIXED CLADDING**

Date: 01.04.19

Scale: 1:2

CAD Ref.: ARSLBB-DH

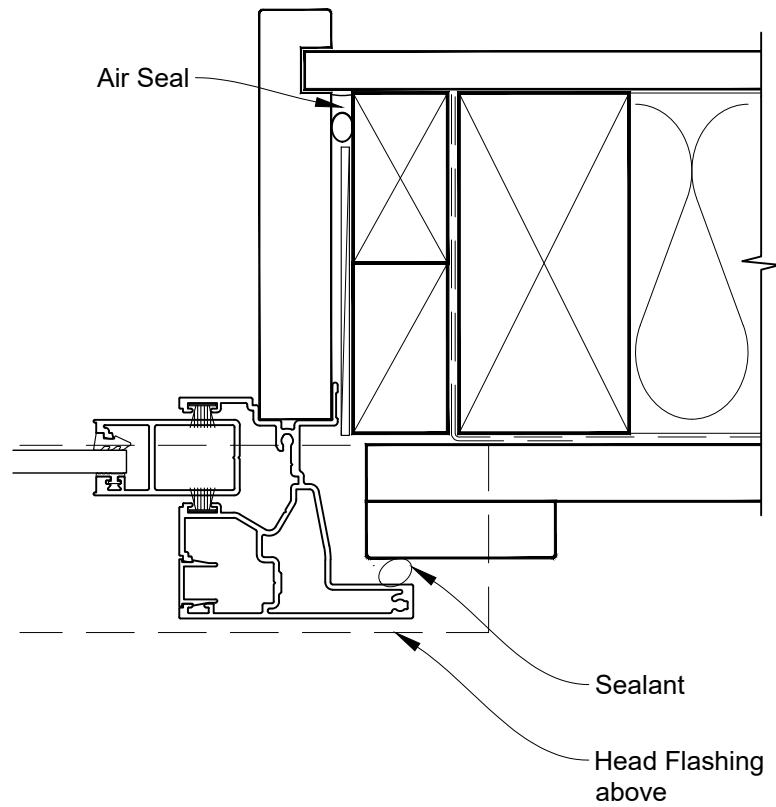


**INSTALLATION DETAIL - ALTHERM RESIDENTIAL  
SLIMLINE SLIDING WINDOW ON BOARD & BATTEN  
DIRECT FIXED CLADDING**

Date: 01.04.19

Scale: 1:2

CAD Ref.: ARSLBB-DJ

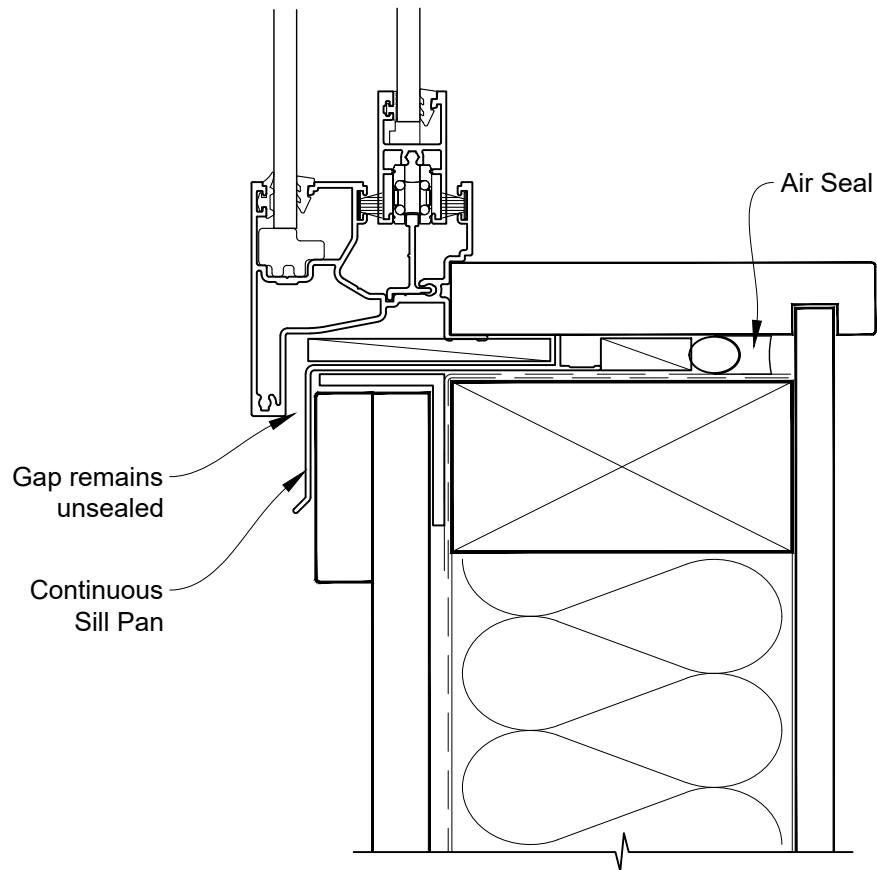


**INSTALLATION DETAIL - ALTHERM RESIDENTIAL  
SLIMLINE SLIDING WINDOW ON BOARD & BATTEN  
DIRECT FIXED CLADDING**

Date: 01.04.19

Scale: 1:2

CAD Ref.: ARSLBB-DS



**INSTALLATION DETAIL - ALTHERM RESIDENTIAL  
SLIMLINE SLIDING WINDOW ON BOARD & BATTEN  
DIRECT FIXED CLADDING**

Date: 01.04.19

Scale: 1:2

CAD Ref.: ARSLBB-DS2

