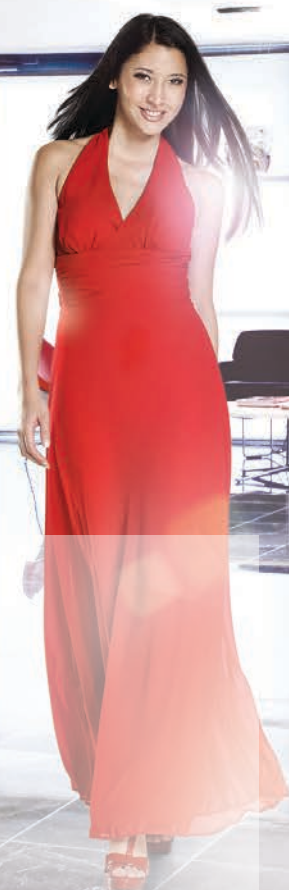




MANET SINGLE-POINT FIXINGS

—
Inspirations and solutions for internal applications.



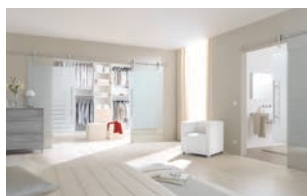
CONTENT



Connecting glass and stainless steel
4–7



Pivoting door system
8–13



Sliding door system
14–21



Connecting system for glass elements
22–25



Reception area at dental practice,
Willich, Germany





MINIMALIST
ELEGANCE FOR THE
CONNOISSEUR.

1

2



The single-point fixing

The MANET system is based on the single-point fixing as the basic key component.

Single-point fixings from the MANET range give every room an appearance that is second to none, not least due to the high-quality materials and the striking MANET point fixing, which is found in modified form in all fitting variants.

The quality of the material and the technical sophisticated fixing ensure that the

load-bearing structures are reduced to a minimum, thus maximising the aesthetic effect produced by large areas of smooth, flat glass.

MANET products – awarded the red dot award.



reddot design award

System components:

- 1 Single-point fixing
- 2 Corner lock

Mercedes-Benz car dealer,
Dornbirn, Austria

INTERNAL ARCHITECTURE WITH MANET.

Architecture requires space for vision, experimentation and design liberation. Modern internal architecture, with its use of glass and stainless steel, expresses a demand for more freedom in the interplay of transparency and light, shape and color, weightlessness and structure. Designers wishing to make their mark

using high-quality materials such as glass and stainless steel opt for quality, a long lifetime and outstanding design. If you are looking for products offering optimum elegance and visible technology for a range of application areas in internal architecture, DORMA delivers the ideal solution.

Whether for pivoting or sliding doors or for space configuring glass partitions.



Pivoting



Sliding



Connecting

These attractive, pleasantly designed and prize winning MANET products stand for the easy and precise fixing of glass elements. The clip-on cover feature enables installation and adjustment to be performed via the fitting itself, helping to prevent any risk of damage to the visible surfaces. After installation, the clip-on covers are inserted into the single-point fixings.

The result: the distinctive MANET look with its attractive flush glass surfaces. To achieve these, counter-sunk holes instead of the usual through-holes are needed in the glass. The plastic sleeve gasket protects the glass from direct contact with the stainless steel component.

MANET
PIVOTING DOOR
SYSTEM.







1

2

3

4

FUNCTION AND DESIGN IN HARMONY.

Frameless pivoting doors

The functionality and optical features of the MANET pivoting door are ideally coordinated. Even in its standard models, this frameless swing door allows maximum architectural freedom. In addition to the pivot rod, the system comprises bottom pivots, top pivot MANET pivoting door system fittings with pivot or eccentric bushing and overpanel sidelight connectors. This offers you almost limitless possibilities for installing frameless pivoting doors

in wall openings – even with glass overpanel and sidelights – and in glass partition wall assemblies with single-point fixings.

A variety of options

The MANET pivoting door system is suitable for double-action and single-action doors.

Both types of door can be fitted with floor springs, e.g. the DORMA BTS 75 V. Corner patch locks can also be fitted.



System components:

- 1 Pivot bearing
- 2 Pivot rod
- 3 Bottom pivot bearing
- 4 MANET pull handle

Treatment room in a dental practice



AESTHETIC DOWN TO THE LAST DETAIL.

Entrance area of Wirtschaftskanzlei
Schlüter Graf & Partner, Dortmund,
Germany



The fittings of MANET pivoting door system retain the familiar straight-line design. Beside the standard connectors, the range also includes 90° offset over panel sidelight connectors, which allow overpanels to be fixed securely e.g. to soffits, or sidelights to be connected at an angle.

Depending on their application, the connectors themselves can also feature a pivot bearing location for the door. The pivot rod is made to measure and is supplied with single-point fixings for mounting the door leaf.



Flexibility is ensured not least by the short-type top and bottom pivot rods. The visual effect of a continuous pivot rod can be achieved using the shorttype model in conjunction with an intermediate tube, which is cut to measure from a standard length of 2 m depending on the door leaf height.



MANET
SLIDING DOOR
SYSTEM.







1

2

MANET. AS IF FLOATING.

Sliding doors fitted with the MANET system can be fixed in glass partitions and even structural wall openings. The high degree of flexibility of the MANET sliding door system provides plenty of scope for implementing outstanding solutions to satisfy individual requirements.

In addition to the standard variants, curved, bi-parting or parallel sliding doors can also be constructed. As if floating, the rollers of the MANET sliding door system glide on the track. These elements are the key components of the structure. You can choose between two design variants.



System components:

- 1 Stainless steel track with roller carrier CLASSIC
- 2 Corner lock

Inchcape Head Office,
Sydney, Australia

1

2

3



ONE SYSTEM. TWO DESIGN VARIANTS.

MANET 2 x 2

In the case of sliding door systems, the original roller carrier with its strikingly straight lines (CLASSIC) has now been joined by an equally compelling design variant characterised by a softer, discretely radiused shape (TREND). There are also two track rail options. The solid version is drilled for mounting the single-point fixings, while the tubular track is secured to the wall or glass using clamp fixings. Design modifications now introduced allow the free combination of these various roller carriers and track designs. The suitable anti-jump device will be delivered with the roller-carrier to be set in the strap according to the requirements.

System components:

- 1 Stainless steel track with roller carrier TREND
- 2 MANET pull handle
- 3 Floor guide

Entrance to kitchen, private project



TREND

The softened form of the MANET TREND design provides an excellent alternative to the original MANET CLASSIC fittings for sliding doors, adding flatteringly elegant aesthetics to the track-bound system.



CLASSIC

The MANET CLASSIC is the ideal no-nonsense design variant for sliding door fittings. With its timeless, attractively purist straight lines, it will enhance any architectural style.

MANET CONNECTING SYSTEM FOR GLASS ELEMENTS.







1

2

3

SYSTEM CONNECTIONS.

System components:

- 1 Connector glass/ceiling
- 2 Connector glass/wall
- 3 Pivot rod with single-point fixing

Entrance area of Don-Bosco church,
Bolzano, Italy

Glass partitions, constructed with the MANET connecting system, enhance internal architecture anywhere, creating friendly and airy rooms in which people feel at ease. The system modules enjoy a diversity of applications, boast a broad spectrum of connection options and can thus accommodate an extremely wide range of architectural requirements. The MANET connecting system has proven particularly successful

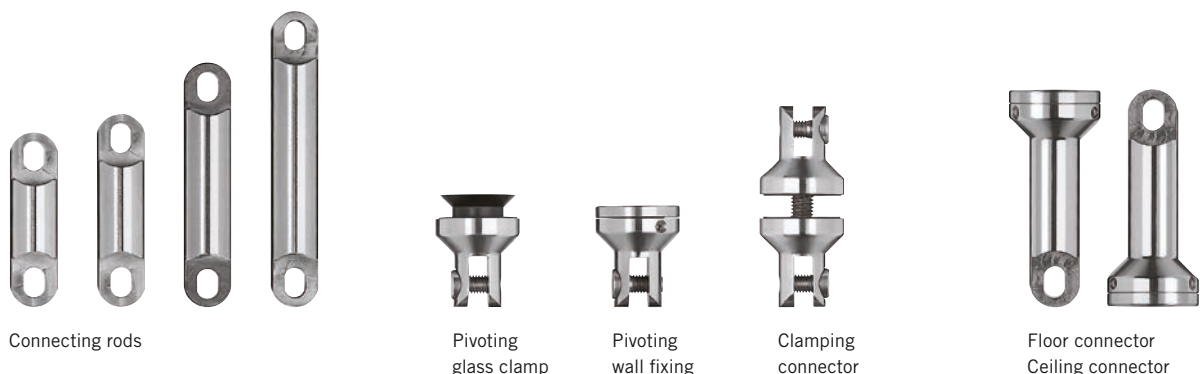
as a solution for designing entire floors. Where large numbers of people have to work with great concentration, this system creates quiet, enclosed zones while still maintaining maximum interface transparency between different areas. Communication and interaction are encouraged and the spaciousness and openness of the internal architecture provides exactly the right atmosphere.



Outstanding design

The unparalleled engineering excellence ensures that the MANET connecting system with all its design variants offers transparency and aesthetic elegance. The adjustable corner connectors hold the glass elements precisely for fixing to walls, ceilings, floors, platforms and plinths.

For all types of room: Ease of planning and the right connections – with clamp and corner connectors fitted in combination with connecting rods of various lengths. These components enable glass partitions to be connected to each other or to existing structures at almost any angle. Wayward structural tolerances can easily be accommodated by the slots provided at the end of the connecting rods. Even subsequent structural modifications are unproblematic, as all components may be reordered individually.





DORMA Australia
Head Office
46-52 Abbott Road
HALLAM 3803
Australia
Phone 1800 675 411
info.au@dorma.com
www.dorma.com.au

DORMA NZ Limited
Head Office
Building P
61-69 Patiki Road
Avondale
Auckland 1026
Telephone (09) 830 2052
Facsimile (09) 820 4909