

With 20% of Australians having a disability and a continual increase in our ageing population, DORMA recognise the importance of developing a corporate initiative to assist with the installation and upkeep of accessible entrances in all residential and commercial premises.

The Disability Discrimination Act 1992 (DDA) and Building Codes of Australia (BCA) are supported by the Australian Standard AS 1428 (Design for Access and Mobility).

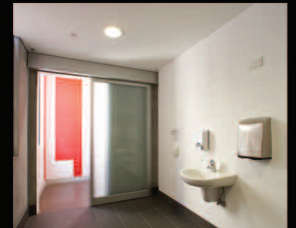
The DDA and BCA require all new and refurbished public developments to be constructed with accessible entrances and internal amenities that cater for people with disabilities and AS 1428 outlines how to achieve these access features.

With the enforcement of these codes and standards it proves to be approximately 30 times more cost effective if compliance is achieved during initial construction rather than modifying the dwelling after completion. Planning for access NOW, saves costly remedial works later on.

DORMA have demonstrated a commitment to the requirements set out in the DDA and BCA by introducing a product range of automatic swing and sliding doors which provide an “equitable, functional and dignified access” for people with a disability, the elderly and even those with a temporary injury.



Automatic Sliding Door



Automatic Swing Door



- DORMA Models
Applicable to the
Privacy Door Packages
- CD 80
 - ED 200
 - ED 800
 - SL 201
 - EL 301



Typical Operational Sequence



General Building Requirements

ENTRANCES & DOORWAYS

- All Main entrances must provide a ramp or vertical transport system.
- Where an entrance is not required to be accessible, a sign directing people to an accessible entrance is required.
- Where a revolving or turnstile door is installed then an adjacent hinged or sliding door shall also be provided.
- Wheelchairs require sufficient manoeuvring space around corridors and doorways. Refer to AS 1428.1: e.g. If corridors are 1140mm wide, a 850mm clear opening doorway is required. If corridors are narrower, doorways must widen accordingly (Wider corridors and 900mm doorways are preferable).
- Doors frames must have 30% luminance contrast with surroundings.
- Hinged doors must open at least 90° and remain there for sufficient time to allow a person with a disability to pass through.
- Barriers at doors, such as thresholds, steps and high profile doormats should not be used and a 1200mm flat and level landing area is recommended during opening, passing through and closing the door. (Refer to "Manoeuvring space at doors" AS 1428.1).
- Frameless glass doors, sidelights & walls must have a continual 75mm visual indicator across the full width of the glass panels at a height between 900mm - 1000mm above the floor.

TOILETS

- A unisex accessible toilet must be the first toilet installed in any facility. It must have a stand alone entry separate to gender toilets that allow persons with a disability to open the door, pass through, close the door and lock it.
- Horizontal pull rails, trailing side pull-handles, sliding bolt locks and automated buttons should be at a height between 900mm - 1000mm above the floor.

PATHWAYS

- On a path of travel, ensure drains and grate openings are no wider than 13mm and elongated grate openings are placed ACROSS the direction of pedestrian travel.
- Pathways are required to have a minimum width of 1000mm. However to ensure accessibility it is recommended that the width of a primary pathway be minimum 1800mm and a secondary pathway be 1200mm.

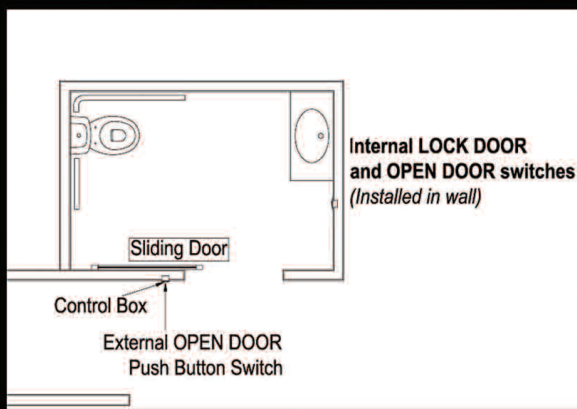
AUTOMATION

- Automatic opening devices are recommended where the required pressure to open a door is greater than 20N. (Where a door is not automated, a hydraulic door closer should be fitted).
- Microwave (or similar) sensors should be beamed to detect wheelchairs, guide dogs etc, and have a 5 second time delay before doors start to close. Photoelectric cells should be fitted for extra safety.

(The above is provided for general information only. We recommend that when designing the entrance to a building that reference is made to the DDA, BCA & AS 1428)

1. Door closed and unoccupied = LED Light off.
2. Press the "To Open Door" switch to enter the restroom. The door opens, times out and then closes. (NB Hold open times are adjustable).
3. Once inside with the door closed, press the "To Lock Door" switch. The door will electrically lock and the "Occupied" and "Locked" LED's will illuminate.
4. With the restroom occupied and the door locked, the external "To Open Door" switch is inactive. (Emergency / Authorised Access via external key switch ONLY or an Optional Emergency Timer is available to disengage lock after a preset time)
5. When leaving the restroom press the "To Open Door" switch and the door will open. The "Occupied" and "Locked" LED's will switch off.
6. The door times out and closes ready for the next occupant.

PRIVACY PACKAGE



DORMA BWN Automatics Pty Ltd
Head Office
46 Abbott Road
Hillam, Victoria
AUSTRALIA 3803

Tel. +61 (3) 9796 4111
Fax +61 (3) 9796 3767
Email infoautomatics@dorma.com.au

www.dorma.com.au

DORMA BWN Automatics Pty Ltd
Unit 1 Block V 391 Park Road
Regents Park, New South Wales
AUSTRALIA 2143

Tel. +61 (2) 9738 8222
Fax. +61 (2) 9738 8022

DORMA NZ Limited
20 Sylvia Park Road
Mt. Wellington, Auckland
NEW ZEALAND

Tel. +64 (9) 573 1999
Fax. +64 (9) 573 1991

DORMA BWN Automatics Pty Ltd
44 Harries Road
Coorparoo, Queensland
AUSTRALIA 4151

Tel. +61 (7) 3394 6800
Fax. +61 (7) 3394 2953

DORMA Far East Pte Ltd
31 Gul Lane
Singapore 629425
REPUBLIC OF SINGAPORE
Tel. + 65 6268 7633
Fax. + 65 6459 0137

DORMA BWN Automatics Pty Ltd
36 Crompton Road
Rockingham, Western Australia
AUSTRALIA 6168

Tel. +61 (8) 9527 2981
Fax. +61 (8) 9592 6242

DORMA Arabia Automatic Doors Ltd
PO Box 1633
Dammam 31441
SAUDI ARABIA
Tel. + 9663 847 4300
Fax. + 9663 847 2368

AUTHORISED AGENTS /
DISTRIBUTORS
Stratford Services Pty Ltd
2A Meredith Street
Newton, South Australia
AUSTRALIA 5074
Tel. +61 (8) 8337 3077
Fax. +61 (8) 8336 9431

Architectural Hardware
78 Winnellie Road
Winnellie, Northern Territory
AUSTRALIA 0821
Tel. +61 (8) 8984 4566
Fax. +61 (8) 8984 3399