



MARCHAND
LUXURY FLOORING

Showrooms:

Christchurch - Appointment on request
Wanaka - AD Library 2A Frederick Street, Wanaka
Auckland - Coming November 2024



Featured Product: Blanc Oak
Project: Little Alpha

www.marchandonline.co.nz
info@marchandonline.co.nz
Julia - 027 4272 659
James - 027 2440 558
@marchandflooring



About	04
Our Range	07
Stair Nosings & Transitions	18
Technical Specifications	21
Installation Guide	22
Alternative Solution for E3/AS1 Ammendment 7	25
Care Guide	26
Warranty	29
Frequently Asked Questions	30



At Marchand we share a deep appreciation for beautiful things.

In 2018, when building our own home, the hunt for extra wide, top-quality flooring that wouldn't blow the budget proved frustrating.

This very experience sparked the creation of Marchand.

Our passion lies in offering you exquisite, luxurious flooring at accessible prices. What makes us different is our focus on quality flooring. All our flooring range has an extra-wide board at 240mm, extra thick at 20mm with six mm of European Oak and long planks of 2200 mm.

Designed to last for decades.



"At Marchand we love everything beautiful"

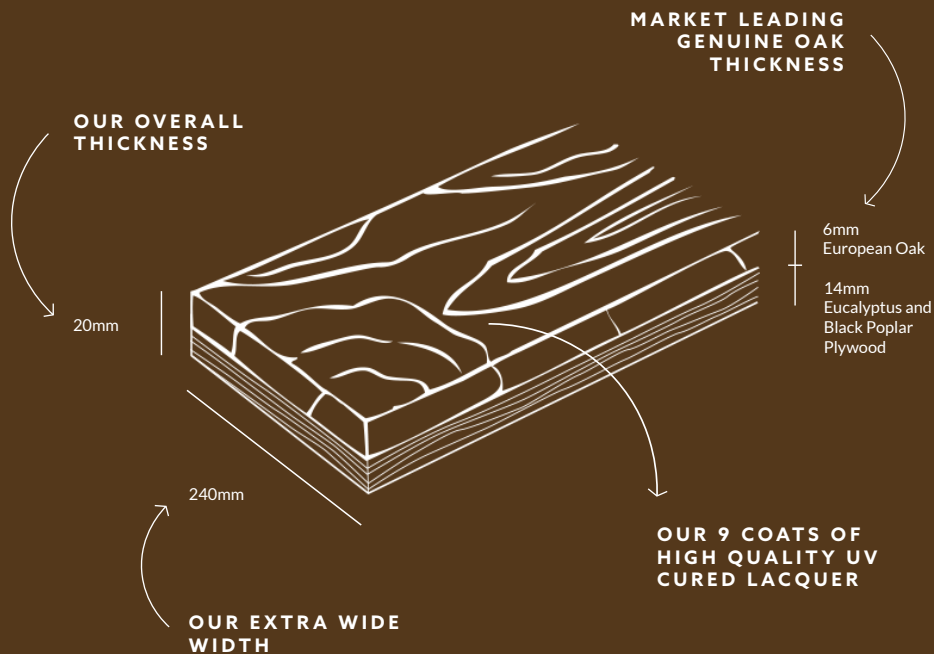


Featured Product:
Bordeaux Oak



Marchand flooring is one of the thickest and widest engineered oak flooring on the NZ market.

Our oak is sourced from Europe and all our flooring is the finished product. No extra coatings are required to stand up to our NZ environments and family dynamics.



DARE TO COMPARE

Marchands' Engineered oak flooring offers a captivating fusion of classic aesthetics and contemporary advancements in construction and finishing. At Marchand Flooring, we elevate this concept by providing one of the thickest natural oak flooring options in the New Zealand market for a very affordable price.

Our meticulously crafted planks boast a substantial 6mm thickness of European Oak on 14mm Eucalyptus & Black Poplar Plywood with a width of 240mm, creating a truly grand visual impact. We celebrate the inherent beauty of natural oak with a range of captivating colours and hand-scraped textures, ensuring a floor that complements any design vision.



OUR RANGE

COLOURS

Blanc Oak	08
La Forêt Oak	09
Rivier Oak	10
Saint - Tropez Oak	11
Bordeaux Oak	12
Fumée Oak	13
Chocolat Oak	14

TEXTURES

16

Lightly Knotted
Rugged

FINISHES

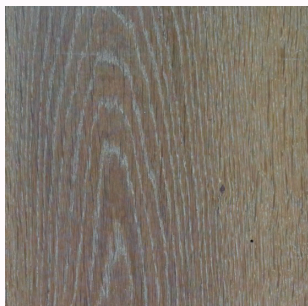
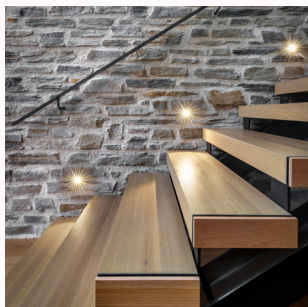
17

Micro Bevelled Edge
Handmade Bevelled Edge
Aged



BLANC OAK

Indulge in the timeless beauty of European Oak reimagined in a luminous whitewashed finish. Our lightest colour flooring in our range undergoes a meticulous brushing process that highlights the wood's natural grain pattern. Nine coats of UV lacquer safeguards the surface while preserving its clean, fresh aesthetic. This versatile option elevates a variety of design schemes, from coastal retreats to contemporary modern homes.



Our lightest natural oak, transformed with a soft, light finish. These planks offer a luxurious, natural beauty protected by a durable UV lacquer. Endless design possibilities await.

LA FORÊT OAK



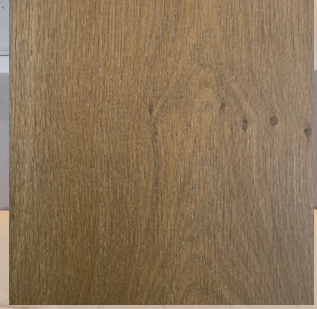
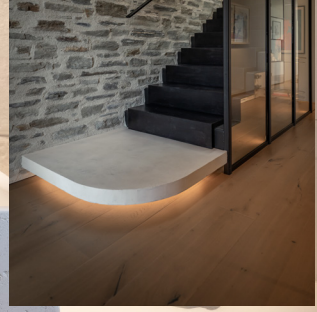
Project: Sunrise Bay

RIVIERA OAK



Riviera Oak flooring celebrates the natural charm of European oak. Sealed with a high-quality, UV-resistant German lacquer, it offers lasting beauty and easy maintenance.

Project: Aubrey Road



SAINT-TROPEZ OAK

The inherent beauty of nature's warm European Oak shines through, protected by a clear German lacquer. This exquisite flooring showcases the wood's natural variation in color tones, ranging from soft honey to warm amber. Each plank is unique, reflecting the subtle markings and graining that only nature can create.

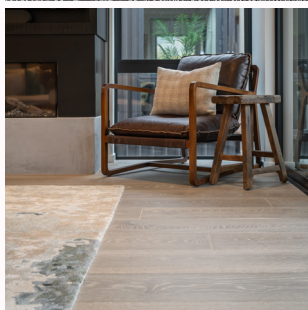
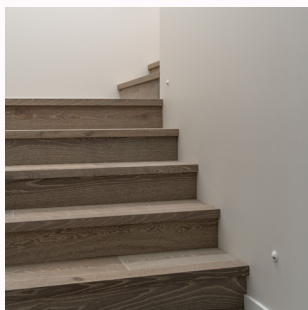
Project: Minaret Ridge



BORDEAUX OAK

This European Oak flooring showcases the timber's raw beauty, dressed in a rich, rustic and warm tone. Sealed with a clear German lacquer, the finish allows the wood's natural grain and character to shine through, creating a sense of timeless elegance. Each plank is unique, reflecting the inherent variations and imperfections that nature imbues.

Project: Chalmer &
McDrury Roads



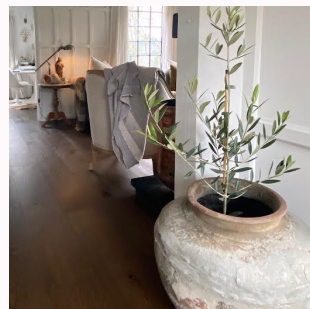
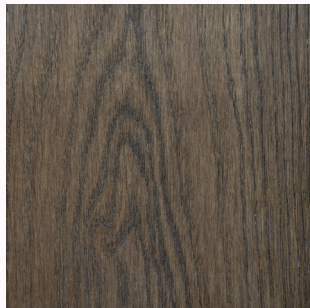
Smoked European Oak flooring. This stunning addition boasts a beautiful grey finish that accentuates the wood's natural grain pattern, creating a sense of modern sophistication.



FUMÉE OAK

Project: Warren Street

Project: Begg Residence
& Sugi House



Indulge in the profound beauty of European Oak in its darkest expression. This meticulously crafted flooring presents our richest shade, A luxurious dark chocolate. Accentuated by a protective UV lacquer. This rich dark selection elevates any interior design, adding a touch of contemporary sophistication and timeless drama.

CHOCOLAT OAK

LUXURY

It's in the Detail



SEEKING SOMETHING EXTRAORDINARY?

Crafting bespoke elegance

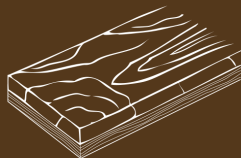
We specialise in product sourcing and can produce custom colours and combinations of textures and finishes for orders of 250sqm and above.



Featured Product:
Saint- Tropez Oak
Project: Minaret

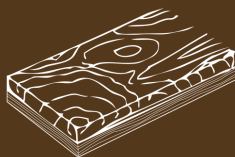


OUR TEXTURES



Lightly Knotted

Embrace the timeless elegance of European Oak with our most popular texture. Featuring meticulously selected planks known for their lighter knot density, this option delivers a cleaner and sophisticated aesthetic. All knots are filled for a smooth, flawless finish. As with any natural product, slight variations in knotting may occur, ensuring each floor retains its inherent individuality.

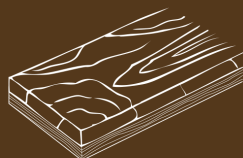


Rugged

Crafted from hand-selected European Oak, this distressed flooring boasts a naturally rugged character. The denser oak showcases a higher prevalence of knots, which are purposefully only partially filled to enhance the textured, timeworn aesthetic. As a testament to the inherent beauty of natural materials, variations in the level of distressing will occur, ensuring each floor possesses a unique charm.

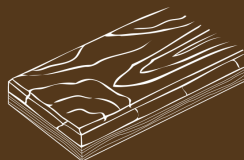


OUR FINISHES



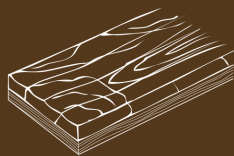
Micro Bevelled Edge

Incorporated throughout our flooring collection is a standard micro bevel measuring 0.3 millimeters in depth. This refined detail subtly accentuates each plank's individuality while maintaining a clean, contemporary aesthetic. It serves to highlight the dimensions of our flooring and provides a sophisticated alternative to our traditional rustic handmade beveled edge. All our flooring comes with one or the other.



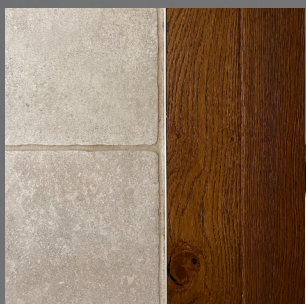
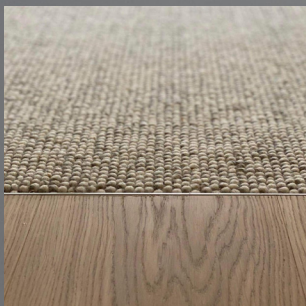
Handmade Bevelled Edge

Enhance the inherent beauty of the oak with our crafted beveled edge. This design element accentuates the natural wood grain, fostering a sense of rustic elegance. Surprisingly versatile, the handcrafted bevel seamlessly complements both modern and traditional design aesthetics. As our most requested finish, it offers a distinctive alternative to our standard micro bevel. Each flooring order allows you to select the bevel edge that best suits your design vision.



Aged Edge

Our hand crafted scalloped finish introduces a subtle variation, reminiscent of weathered, reclaimed timber. This detail evokes a sense of timeless elegance and adds depth to the overall aesthetic. Please note: the sample image showcases our separate handmade beveled edge option for comparison purposes.



Transitions:

Complement your luxurious oak flooring with equally opulent carpet and underlay, or stylish tile. Our 20mm flooring ensures seamless transitions between each surface, creating a cohesive and beautiful look throughout your home.

STAIR NOSINGS AND TRANSITIONS



Stair Nosings:

Marchand's thick oak stair nosing offers stunning style without the hefty price tag. Thanks to our stair nosing and extra wide, long planks, we can create two tread/riser sets from a single 2200mm plank for standard 1m wide stairs. This smart design minimises waste and keeps costs low, allowing you to enjoy premium oak wrapped stairs for an affordable price.

Featured Product: Riviera Oak
Project: Aubrey Road



Featured Product: Blanc Oak
Project: Lammermore



TECHNICAL SPECIFICATIONS

Pre-finished engineered flooring Technical Specifications

Marchand Flooring Luxury European Oak Collection.

Plank details:

- 240mm wide,
- 20mm thick including:
 - 6mm of solid European Oak
 - 14mm of plywood made from Eucalyptus and Black Poplar.
 - 2200mm long, each pack could include up to 25% shorts.

Finish:

All flooring is pre-finished with a German lacquer (Treffert UV Matt lacquer).
We apply 9 coats (7 base coats and 2 top coats).

Our adhesive:

Sourced from Europe, we use a phenolic adhesive. We apply an application rate of .26L/sqm

Installation method:

Direct stick as per Marchand Floorings Pre-finished engineered flooring Installation Guide

Commercial Requirements

Proof of slip AS/NZS.4586:2004 and fire testing ISO9239 for commercial projects is available upon request.

Formaldehyde Emission EN717-1

E1



INSTALLATION GUIDE

Pre-finished engineered flooring Installation Guide

- 48 hours before install, store the flooring to the area it is to be installed in, allowing the floor to acclimatise to the room. Store flat in a protected, shaded, dry location, in its original unopened packaging and away from heat or moisture sources. Care needs to be taken to keep the product away from these sources by keeping it raised above the ground and not touching the walls. This product should not be stored outside and ideally between 18-25°C. Any storage of the product should follow the above recommendations.
- We recommended that you direct stick our flooring. Please ask for recommendations on moisture barrier and adhesive. Before installation, the substrate needs to be entirely clean, free of cracks, dry, level, and rid of resins and coatings that could prevent the moisture barrier and or adhesive from bonding and working effectively. Unevenness needs to be checked carefully and should not be exceeding 3mm of variation in height for every 1m² of floor area.
- If the area to be laid is concrete slab, then a coat of an approved moisture barrier should be applied and once dry, moisture testing conducted. Additional coats of moisture barrier should be applied, then allowed to dry until the hygrometer reading is below 70% Relative Humidity.
- If the area to be laid is timber substrate, machine sanding is required and the moisture difference between the engineered timber flooring and timber substrate should not be greater than 4%.
- We recommend our flooring is laid when the substrate is between 15°C and 27°C, with relative humidity of 45% to 55%. An allowance of 5 to 10mm should be provided around the perimeter when direct fixing engineered timber to accommodate for expansion, including at doorways, connections with tiles and any fixed items in the area where the floor is laid. Preferably skirting's should not be fitted before laying. Dry laying of 2-3 rows is also recommended to achieve the best result and please do not apply adhesive or tape to the prefinished floor surface.
- When underfloor heating is installed it is essential to gradually increase the floor temperature to avoid 'shocking' the floor. The maximum surface temperature should not exceed 27 degrees Celsius. Furthermore, this flooring is not suitable for bathroom environments.
- As this is a natural product, it will wear over time, colour and grain pattern will vary from piece to piece. It will also react to sunlight, possibly resulting in fading or darkening. Generally darker colours tend to fade while lighter colours darken. None of this is considered a fault and is a part of the natural beauty. Also please note there can be colour variation between batches.



Featured Product: Blanc Oak
Project: Lammermore



Featured Product: Saint Tropez Oak
Project: Bargour



E3/AS1 ALTERNATIVE SOLUTION

Alternative Solution for E3/AS1 Amendment 7

Marchand's Engineered Oak flooring's "Luxury European Oak Collection" when installed following our pre-finished engineered flooring installation guide and along with the following requirements will comply as an alternative solution in kitchens and laundries where there are sanitary fixtures and sanitary appliances. Marchand Engineered Oak Flooring is not recommended for installation in bathrooms. Installation in these areas will void the warranty.

The amendment states: "other floor finishes may also be capable of satisfying the performance for impervious and easily cleaned, if installed in a manner that prevents gaps or cracks within the finish and at any parts of its perimeter that are exposed to water splash, and/or if the surface is sealed with a suitable durable coating."

The following aspects support Marchand's Compliance:

- All flooring is pre-finished with a 9 coat UV Matt lacquer system. The 9 coat system uses 7 base coats and 2 top coats which repels waters. All coatings are factory applied during production.
- Waterproof flexible sealant is to be applied to the perimeter where the flooring meets the cabinetry or skirting if within 1.5m of all sanitary fixtures and sanitary appliances. This prevents water splashes penetrating the surface.
- All flooring should be installed by direct fixing with an elastic flooring adhesive (e.g. BONA R848T)
- Our floorings tongue and groove system and superior 20mm thickness which includes 6mm of solid oak and 14mm of plywood made from Eucalyptus and Black Poplar.
- Our engineered timber flooring is easily cleaned using a vacuum and a damp mop which is comparable to those required for other floor finishes that are still classified as an Acceptable Solution e.g., vinyl.



AFTERCARE GUIDE

Timber is a beautiful natural product, but like any natural material, it requires proper care to maintain its beauty and lifespan. This guide will equip you with the knowledge to maximize the enjoyment of your new timber floor.

Maintaining the beauty of your timber floors is surprisingly simple! Regular cleaning is key to keeping them looking their best.

Here's what you need to do:

Weekly Cleaning:

Vacuum: Use a soft-bristle attachment to remove dust, sand, and debris. Ensure the vacuum wheels are clean and free rolling to avoid scratching the lacquer finish.

Mop: Use a microfiber pad with a wood floor cleaner solution suitable for your floor's finish. Wipe along the floorboards with the grain, then dry with the mop until almost no moisture remains. Any product should be specifically designed for wood floors.

Tips for Optimal Results:

- Sweep, mop with an anti-static cloth, or vacuum frequently.
 - Use only cleaning products specifically formulated for wood floors. Others may leave harmful residue or dull the finish.
 - Avoid soaking the floor. It should dry within 2-3 minutes of cleaning.
 - Use a damp, not wet, mop or cloth. Steam mops are not recommended.
 - Wash the microfiber mop pad regularly to maintain cleaning effectiveness.
-

Deep Cleaning (Every 2-4 Years):

A deeper clean removes dirt, grime, and scuff marks that regular cleaning might miss. This helps your floors stay beautiful for years to come. We recommend hiring a professional for deep cleaning using a wood floor scrubber.

Coating Refurbishment (Every 5-8 Years):

Over time, your floor's protective coating may show wear and tear. Here's what to do:

- **Light Sanding:** For slight scratches or wear, a professional can lightly sand the surface followed by two coats of a high-quality traffic-rated matte finish for renewed protection.
- **Full Sand and Recoat:** If your floor is discoloured, deeply scratched, or dull, it may need a complete refinishing. A professional can sand it back to bare wood, re-stain it (if desired), and apply a new protective coating system.

Need a Professional?

Contact our team at info@Marchandonline.co.nz for recommendations on specialists in your area. We can also provide information on what products are best and always recommend Bona products.

Maintaining a Stable Climate

Timber flooring reacts to surrounding conditions. Ideal relative humidity is between 40% and 60%. A dehumidifier or humidifier may be necessary to maintain this range. Maintain an average temperature between 16°C and 27°C.

Protecting Against Sun and UV Exposure

Direct sunlight can cause excessive heat, fading, and warping. Utilize UV-protected windows, blinds, or curtains. Avoid placing rugs on the floor for the first 3 months to allow even colour development. Regularly move rugs and furniture to minimize uneven colour variations.

Everyday Care Tips

- Prevent Scratches: Lift furniture when moving, use felt pads, and avoid shoes with sharp objects.
 - Minimize Moisture Damage: Clean spills promptly, address leaks immediately, and use breathable mats at entrances.
 - Control Pet Damage: Keep nails trimmed and use mats at pet entry points.
-

Holiday Homes and Bach's

For unoccupied periods, consider a local caretaker to manage humidity and ventilation. Portable humidifiers or HRV systems can help maintain proper humidity levels. Following these simple guidelines will ensure your timber floor remains a source of beauty and enjoyment for years to come.



Featured Product: Saint Tropez Oak
Project: Bagour



OUR WARRANTY

At Marchand we warrant that your flooring will be free from structural defects for 10 years when installed according to the installation instructions and when used under normal residential use.

We deem normal residential use to be daily activities commonly associated with residential use. This includes foot traffic, supporting fixed furniture, and light non-fixed furniture. We deem supporting heavy non-fixed furniture and/or heavy or sharp machinery and equipment as non-residential use.

This warranty is only valid if the product is fully paid and only to the original purchaser. It also begins from the date of purchase and is not transferable or assignable. The warranty is subject to the product being installed and maintained correctly and in accordance to the respective Installation and Care & Maintenance instructions.

This warranty is not valid if your floor incurs a fault due to incorrect installation and/or care & maintenance.

As this is a natural product, it will wear over time, colour and grain pattern will vary from piece to piece and there can be colour variation between batches. The flooring will also react to sunlight, possibly resulting in fading or darkening over time. Generally darker colours tend to fade while lighter colours darken. None of the above is considered a fault/defect and is a part of the natural beauty. Also please note that wood flooring can shrink or expand in response to climate conditions such extreme temperatures and/or humidity. Although the engineered construction of this product is designed to minimize this, it cannot be ruled out. In the terms of this warranty scratching & dinting is not deemed to be a structural defect.

If your flooring does indicate structural defects within the warranty period Marchand at our discretion will either repair without charge the affected planks or replace the affected planks without charge with planks of equal quality/value.

Marchand will not pay for the removal or replacement of cabinets, appliances or other fixtures. Replacement planks are warranted hereunder only for the remaining time of the original warranty and are not guaranteed to match in colour, grain and gloss with your existing floor.

Any claims under this warranty must be made in writing within the guaranteed period and must be accompanied by proof of purchase and evidence of the defect. Such claims will be paid on a pro rata basis taking into account the number of years of satisfactory product performance.



FREQUENTLY ASKED QUESTIONS

What makes our Engineered Oak Flooring luxurious?

Marchands' Engineered oak flooring offers a captivating fusion of classic aesthetics and contemporary advancements in construction and finishing. At Marchand Flooring, we elevate this concept by providing one of the thickest natural oak flooring options in the New Zealand market for a very affordable price.

Our meticulously crafted planks boast a substantial 6mm thickness of European Oak on 14mm Eucalyptus & Black Poplar Plywood with a width of 240mm, creating a truly grand visual impact. We celebrate the inherent beauty of natural oak with a range of captivating colours and hand-scraped textures, ensuring a floor that complements any design vision.

Can you supply Oak flooring, different to your range on your website?

Absolutely, We would be happy to assist you in sourcing your particular request. Please contact us to discuss your specific requirements. It is important to note that minimum order quantities may apply.

Where can I install luxury engineered oak flooring?

Crafted for lasting beauty, our luxury engineered oak flooring creates a stunning addition to kitchens, living areas, hallways, and bedrooms. While beautiful and durable, engineered oak is not recommended for bathrooms due to high moisture environments.

Why is your flooring designed for the NZ market?

Our meticulously crafted flooring boasts nine coats of German UV-cured lacquer. This advanced finish creates a resilient surface, offering superior scratch and UV resistance for lasting beauty and effortless maintenance.

Are you E3/AS1 Compliant?

Marchand Engineered Oak Flooring complies as an alternative solution for kitchens and laundries with sanitary fixtures and appliances when installed according to our guidelines. This ensures adherence to E3/AS1 Amendment 7. We strongly advise against installing Marchand Engineered Oak Flooring in bathrooms. Due to the high moisture environment, bathroom installation can void the product warranty.

Which Glue and Primer do you recommend?

For glue we recommend Bona R848T Elastic Adhesive, for Prima we recommend Ardex PU 30 Raid

How do I care for luxury engineered oak flooring?

To ensure the lasting beauty of your investment, we provide a thorough Aftercare Guide with every luxury oak flooring installation.



Featured Product: Saint Tropez Oak
Project: Winders

www.marchandonline.co.nz



MARCHAND
LUXURY FLOORING