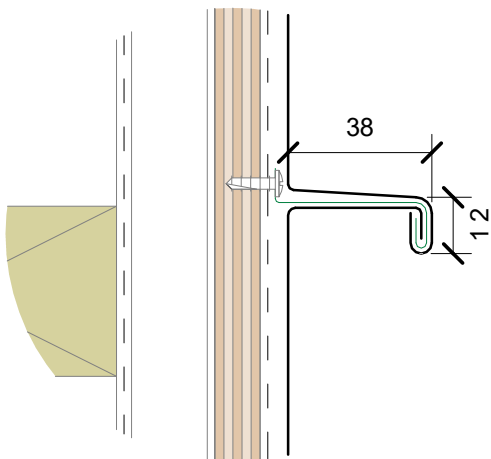
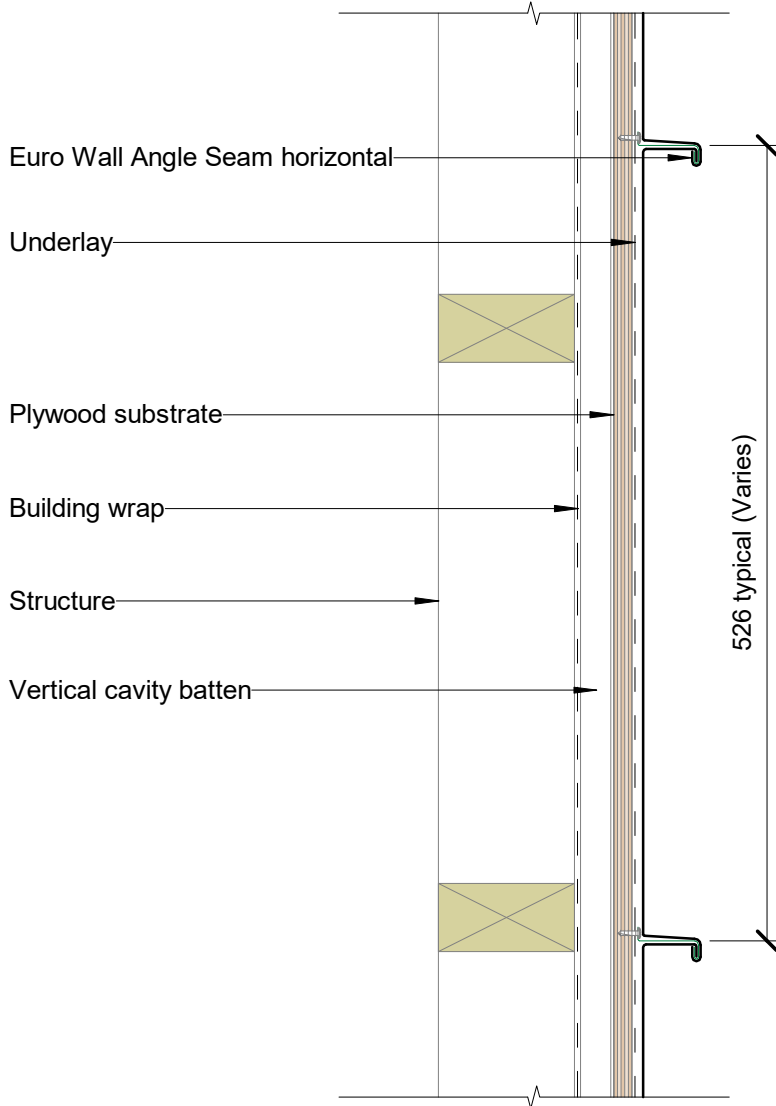


Euro Wall Angle Seam 25 Horizontal

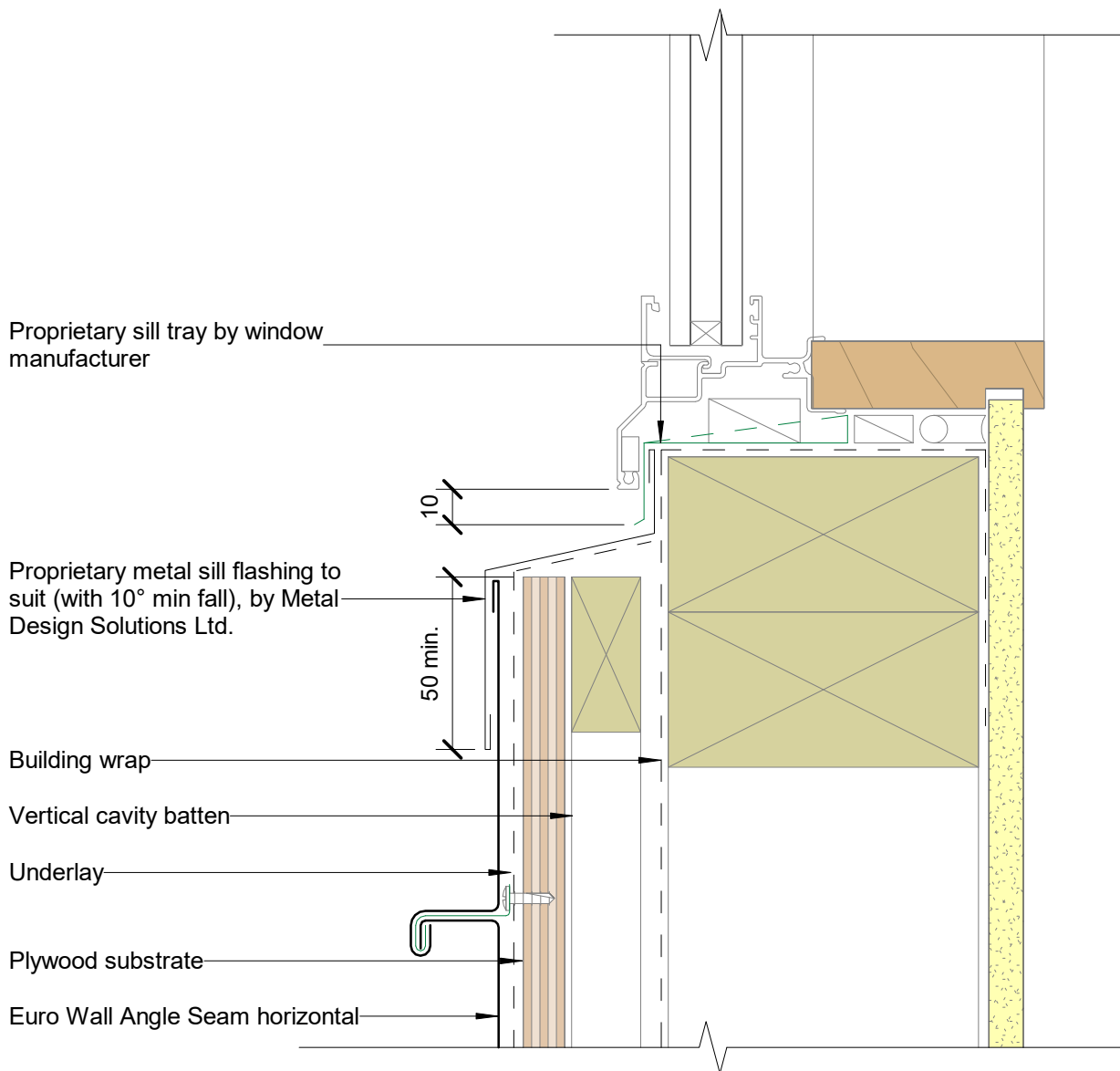
Scale 1:2

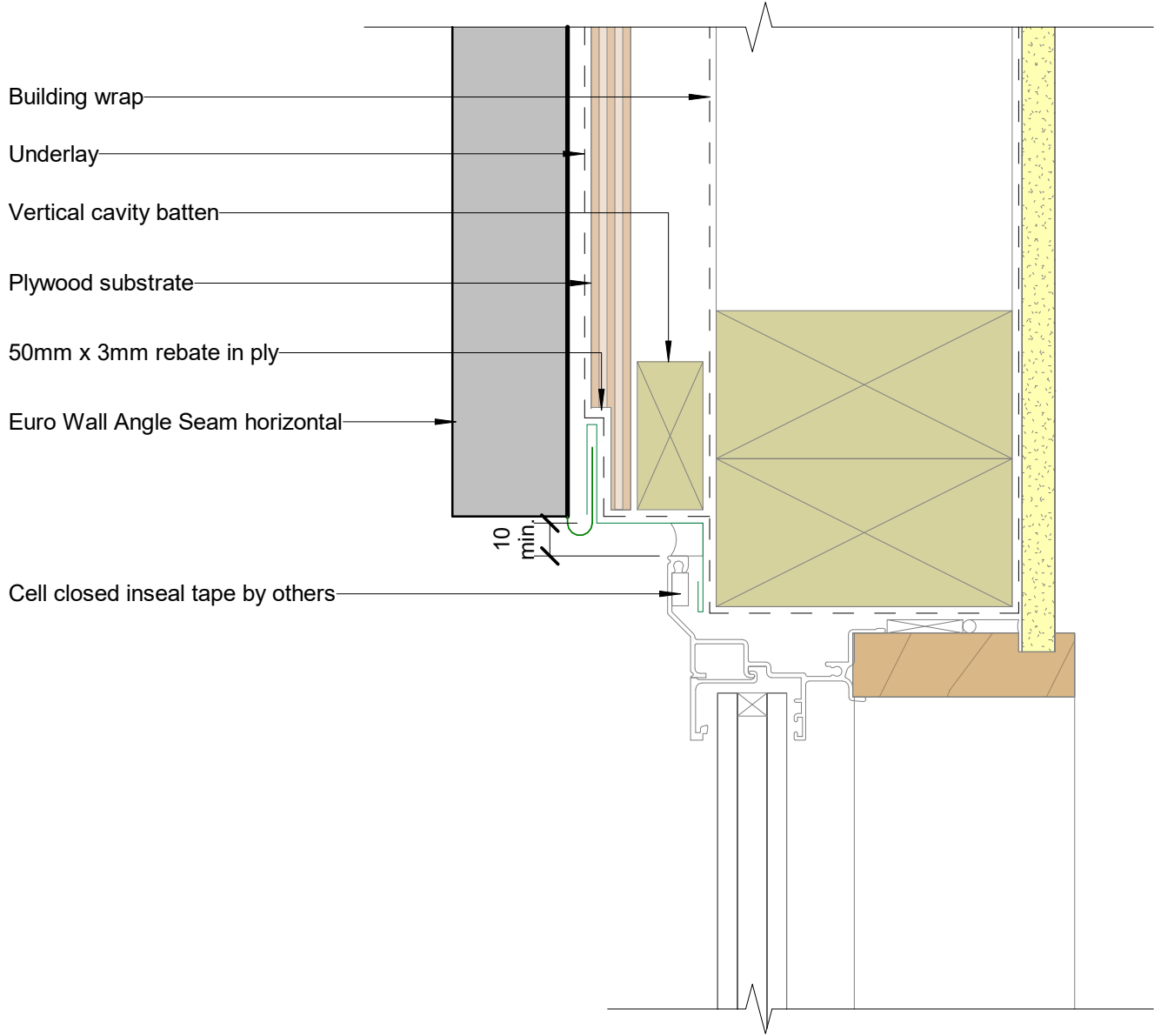


Euro Wall Angle Seam 38 Horizontal

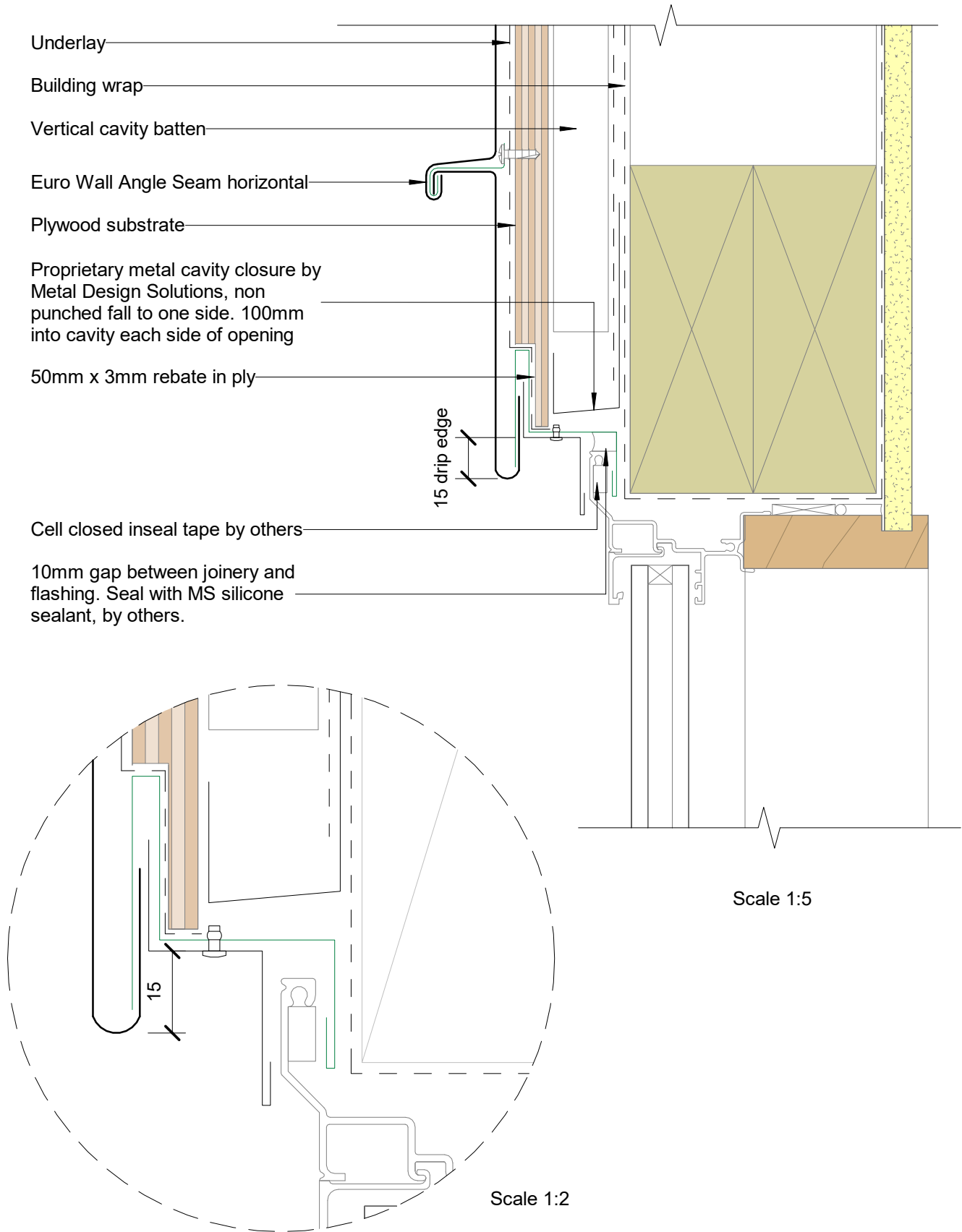


Scale 1:5



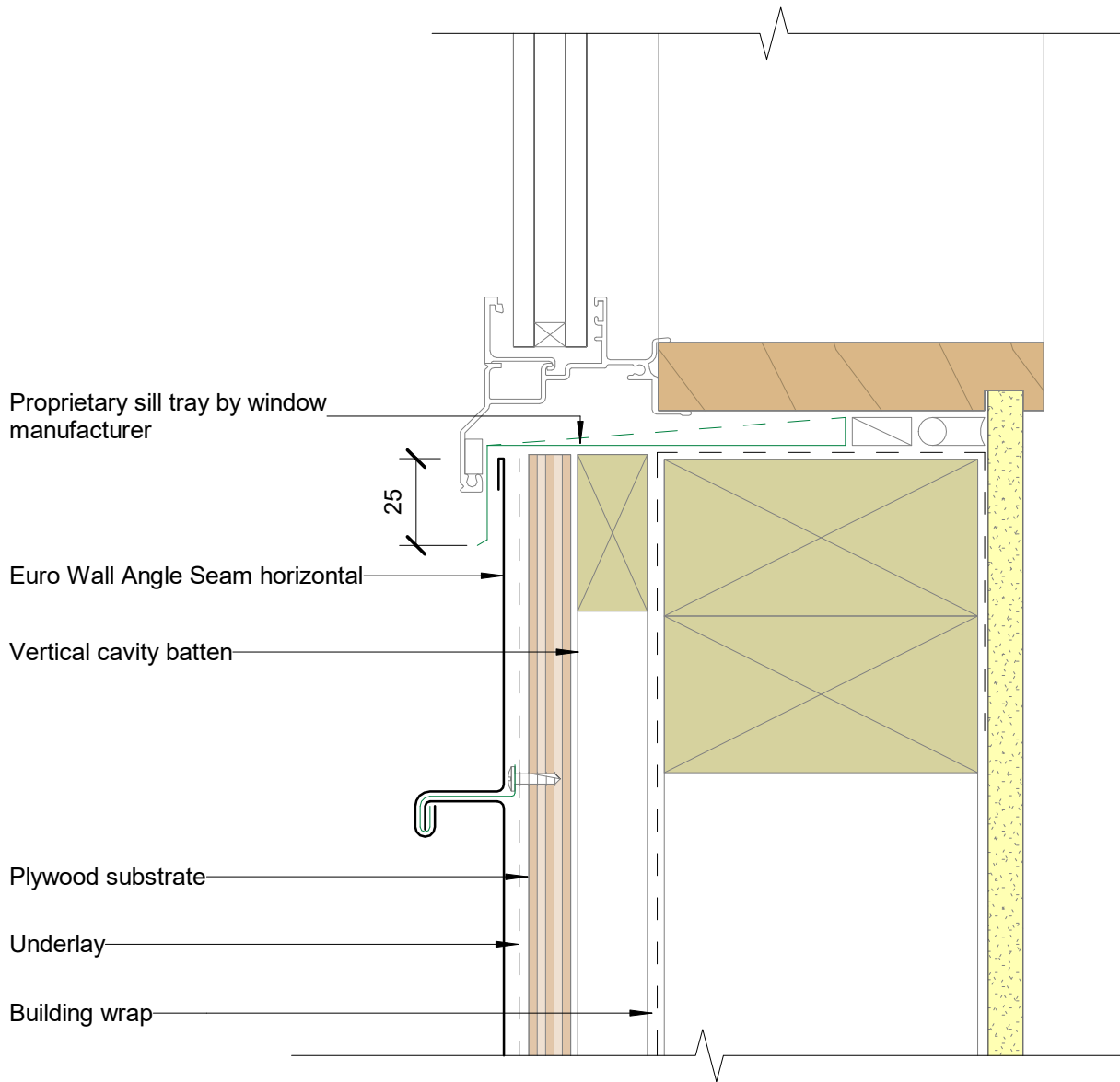


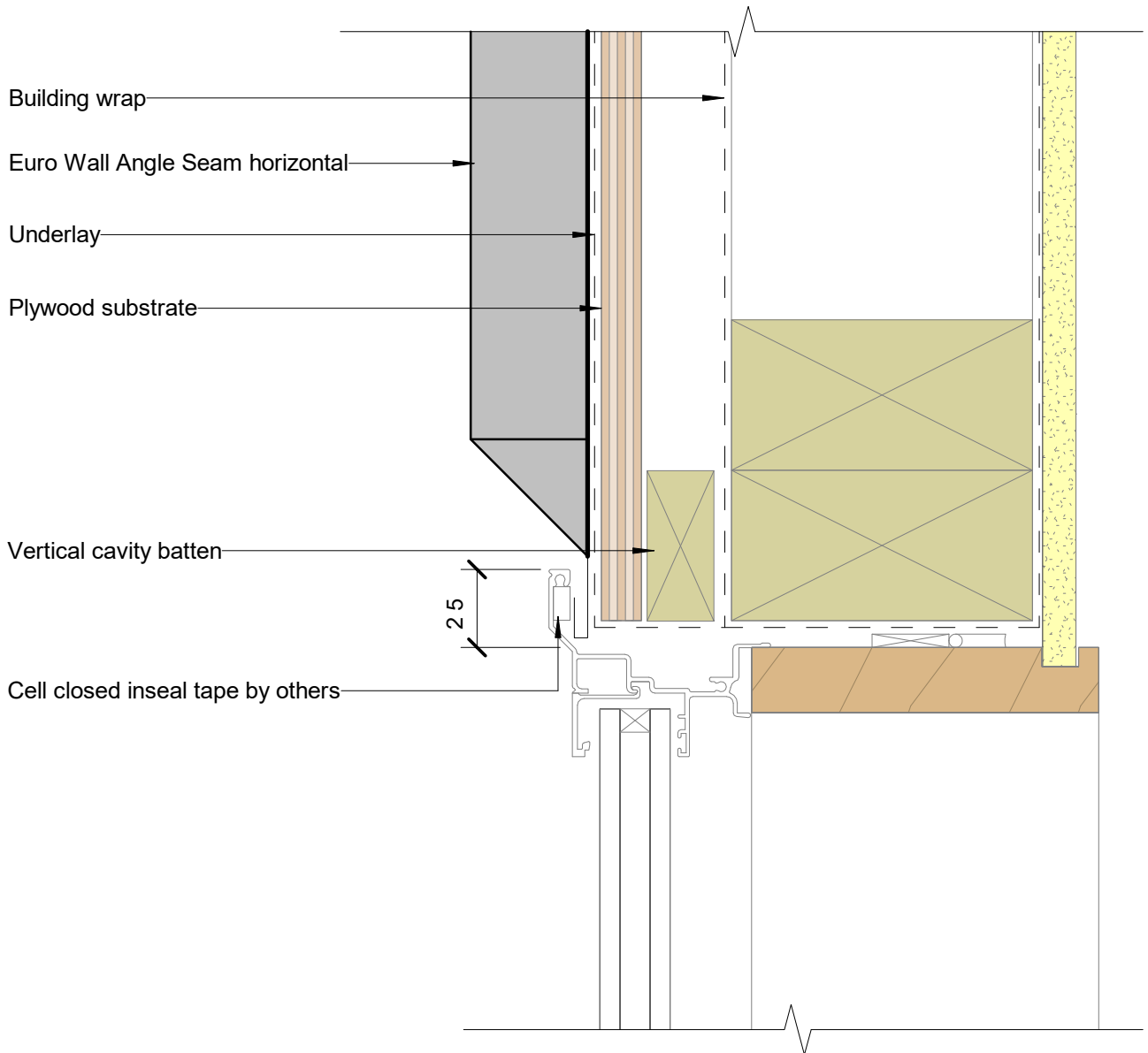
- Underlay
- Building wrap
- Vertical cavity batten
- Euro Wall Angle Seam horizontal
- Plywood substrate
- Proprietary metal cavity closure by Metal Design Solutions, non punched fall to one side. 100mm into cavity each side of opening
- 50mm x 3mm rebate in ply
- 15 drip edge
- Cell closed inseal tape by others
- 10mm gap between joinery and flashing. Seal with MS silicone sealant, by others.

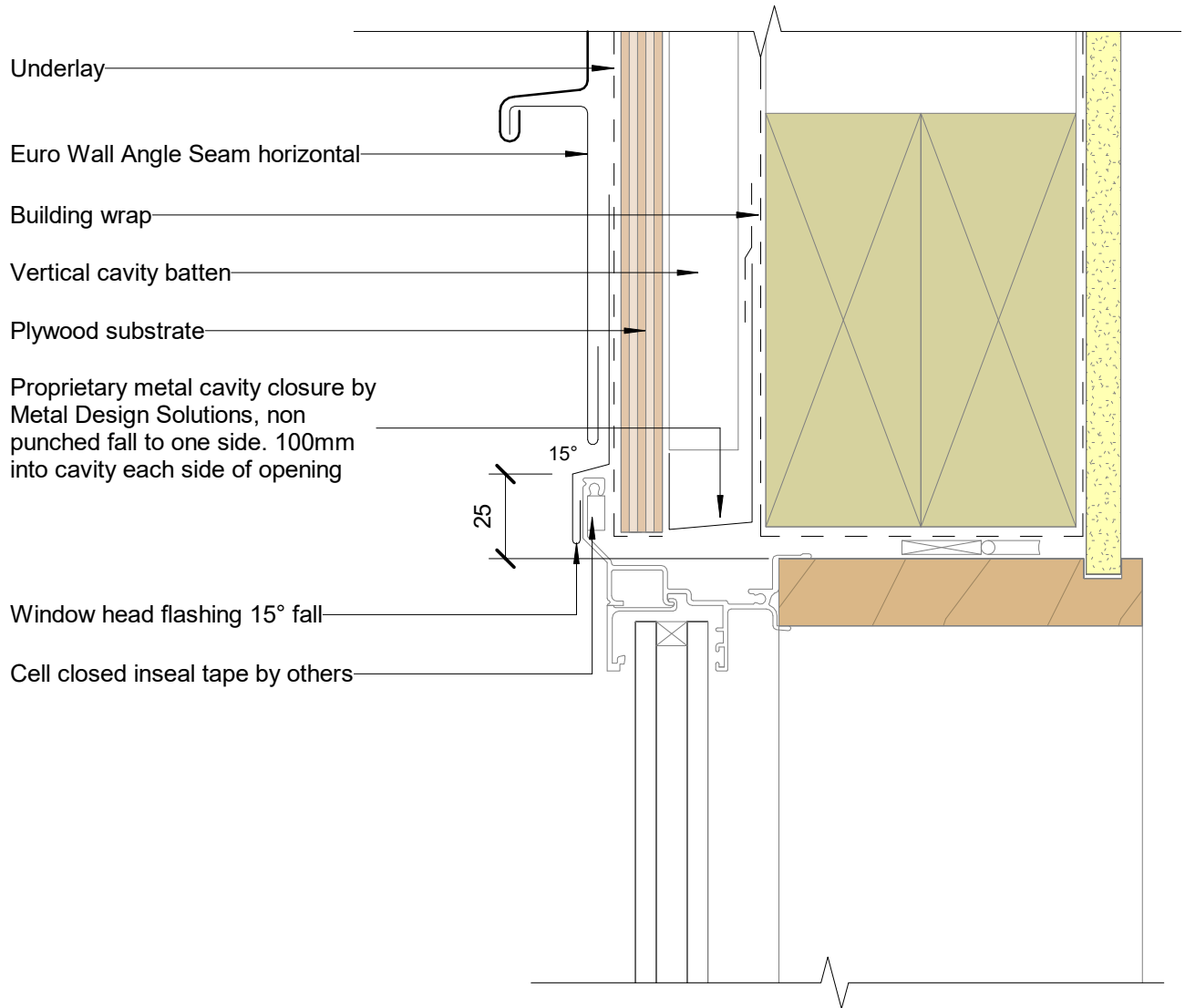


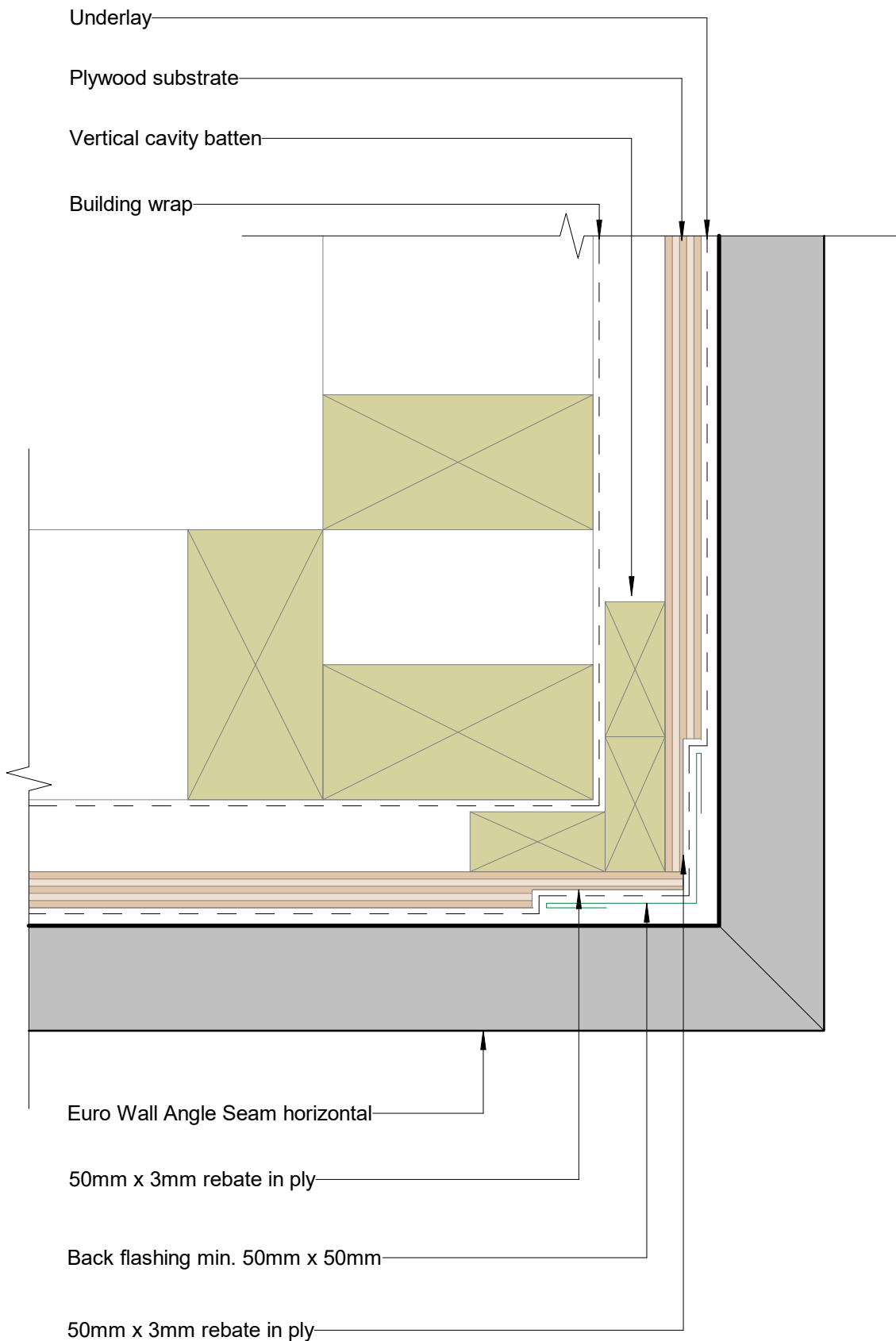
Scale 1:5

Scale 1:2

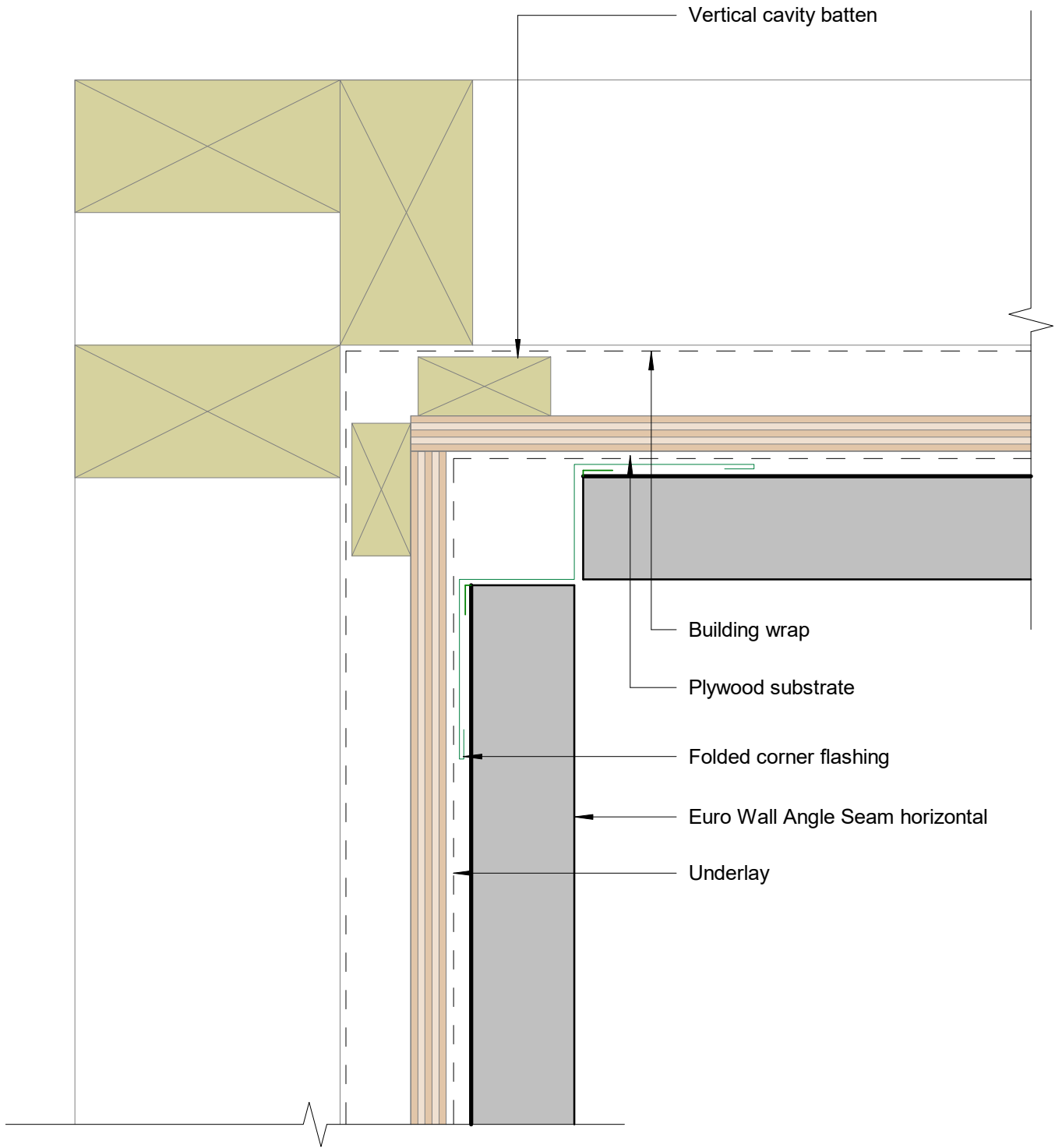


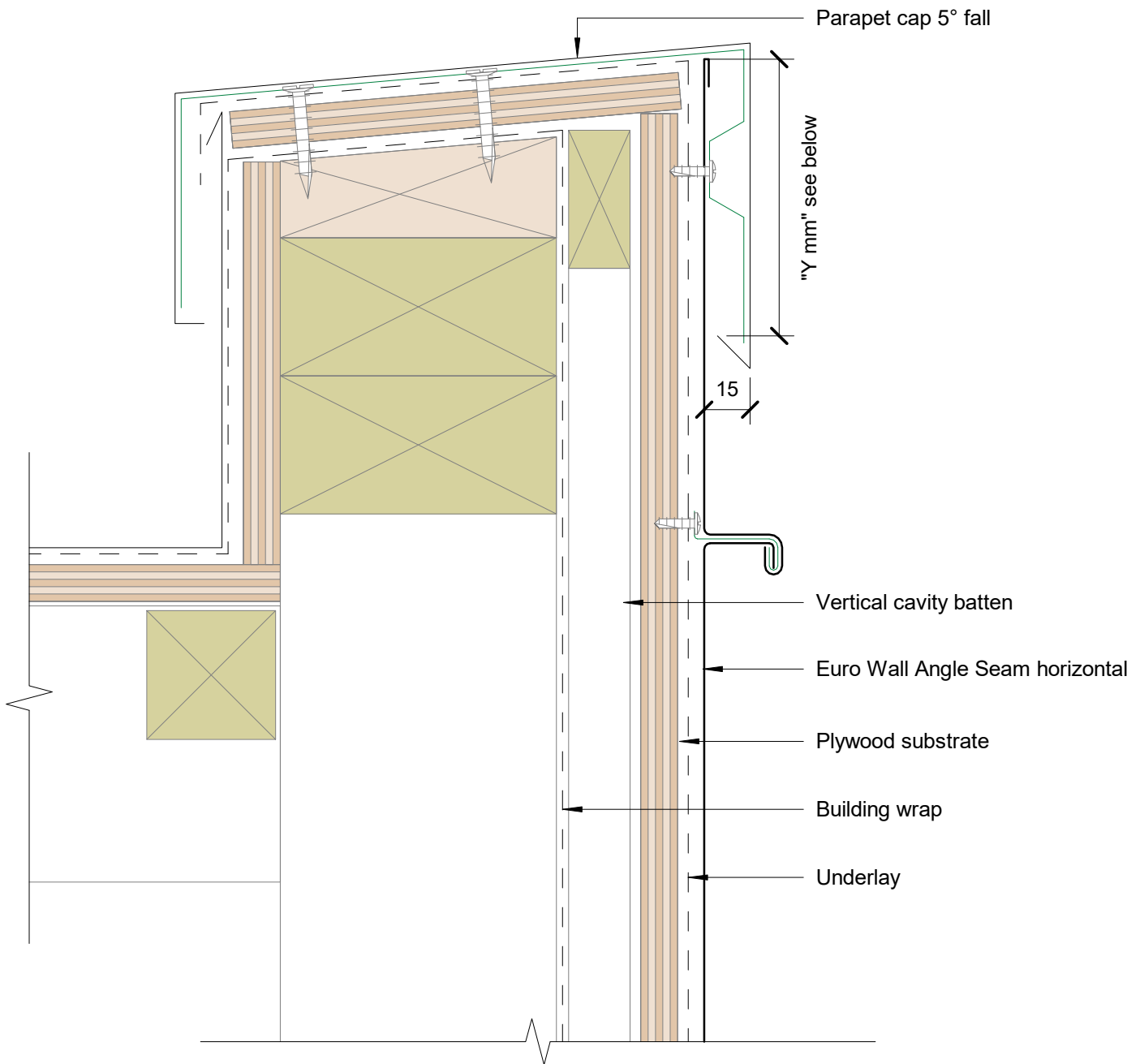












Parapet Typical (Y mm): excluding drip edge:

50mm in situation 1: Low, Medium and High wind zones

70mm in situation 2: Very High, Low, Medium and High wind zones

90mm in situation 3: Extra High wind zones

