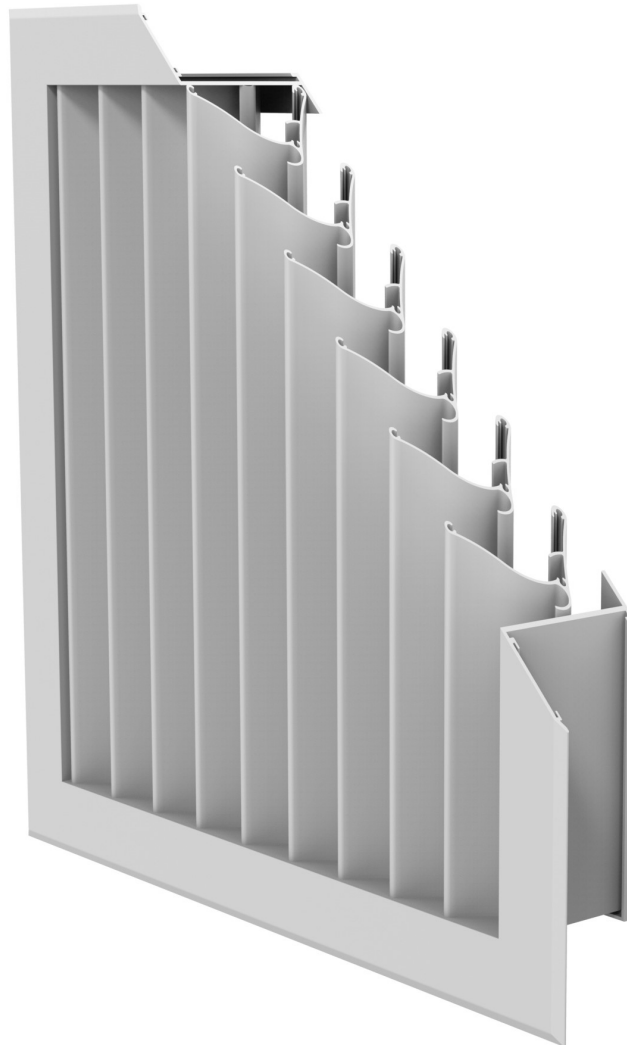


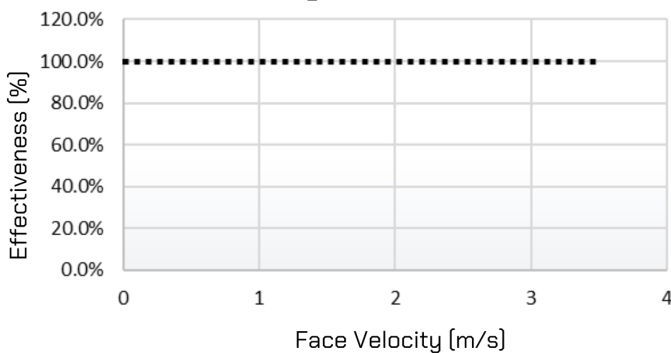
VENTÜER TECHNICAL DATA SHEET

The Ventüer VL-VF2 is a high performing two-stage weather louvre that provides optimum rain defence. The vertically oriented louvre blades are supported within a flanged 100mm deep frame that ejects captured water to the front of the panel. It can be supplied with bird mesh, insect mesh or dust filters fitted to the rear face.

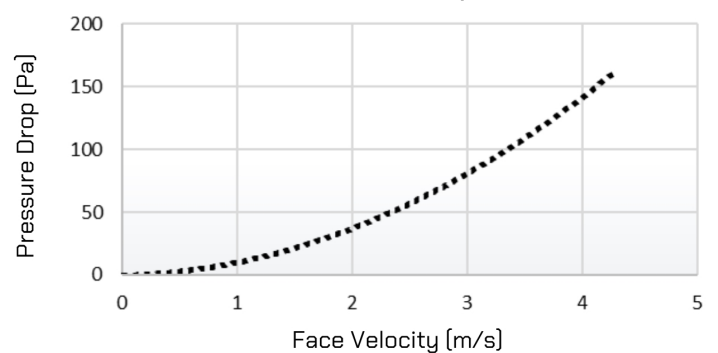


The tables below represent the VL-VF2 performance results for water ingress and pressure drop when tested to BS/EN: 13030. For more information and the Ventüer louvre calculator please visit www.ventuer.co.nz

Weathering Effectiveness



Pressure Drop



VENTILATION LOUVRE

VL-VF2



VENTÜER
High-Performance Building Ventilation

P: +64 9 973 3616
W: ventuer.co.nz
© 2019 All rights reserved

Scale:

NTS

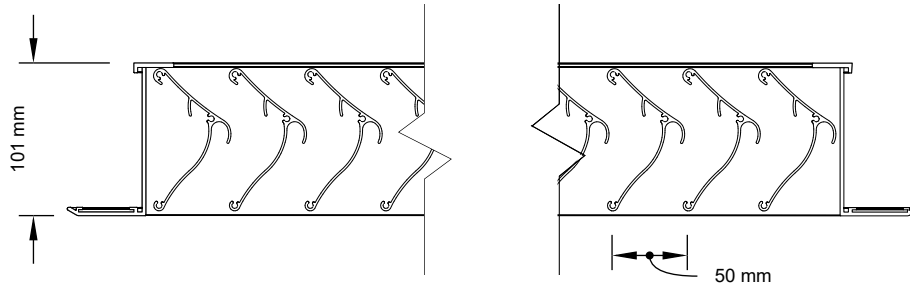
Date:

01/02/2022

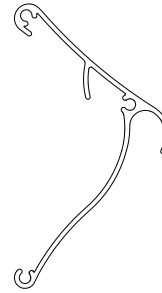
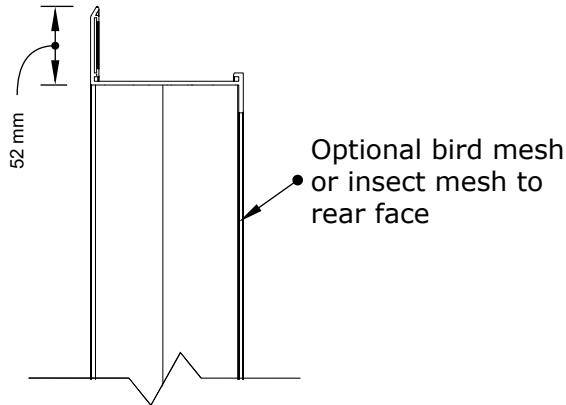
VL-VF2

Ver.1

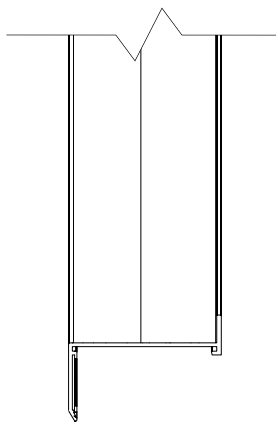
VENTÜER TECHNICAL DATA SHEET



FLANGED FRAME - HORIZONTAL SECTION



VL-VF2 LOUVRE BLADE



**FLANGED FRAME
VERTICAL SECTION**



VL-VF2 FLANGED FRAME

Free Area Percentage
50% of Active Louvre Area

VENTILATION LOUVRE

VL-VF2



VENTÜER
High-Performance Building Ventilation

P: +64 9 973 3616
W: ventuer.co.nz
© 2019 All rights reserved

Scale:

NTS

Date:

01/02/2022

VL-VF2

Ver.1