

STRATLOCK SL RANGE

SL-SFA & SL-SFA-FR PRODUCT GUIDE

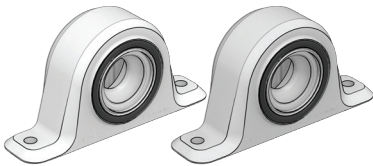
SL-SFA Stratlock® Female Side Mount – For Timber

SL-SFA-FR Stratlock® Female Side Mount - Fire Rated

The SL-SFA provides rapid installation of heavy panels to timber, steel or aluminium framework. Designed specifically for contract interior fitout applications to reduce onsite installation time. Female installs onto side of framework with 2 x #8 panhead screws (20mm) in timber frames, and #8 tek screws (20mm) into steel or aluminium framework. Used with the SL-M10/SL-M18 / SL-M18-FR the new solid internal load chassis creates 4mm supported movement of the panel in any direction at the first engagement before locking into place with an 10/18kg pull out load. The distance between the panel and substrate when installed is 12.5mm at the first click, and 6mm when pressed into final position. Patent Pending.

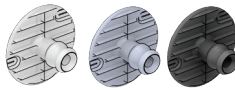
SL-SFA

SL-SFA-FR



USE WITH:

SL-M10, SL-M18, SL-M18-FR



MATERIAL:

White Acetal copolymer/Rubber ring
Off white FR Nylon/Rubber ring

MORE INFO:

Installation Guide SL-SFA
Clip Layout Guide TD-15, 17
Panel Offset Guide

BENEFITS

- Strongest mounting available
- Side mount with rapid screw fixing
- Supported movement of the panel 4mm in any direction before locking into final position.
- No special tools required for installation
- Acoustic isolation between panel and frame
- Option of 10kg or 18kg pull out load with SL-M10 or SL-M18
- 6mm clearance between panel and frame
- SL-SFA-FR available in V-0 rated FR nylon

APPLICATIONS

- Commercial interior fitout
- Residential interior fitout
- Architectural applications
- Mounting heavy wall panels
- Fire rated interior panels

INSTALLATION: Partially exploded through section showing typical installation method

