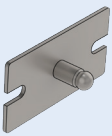
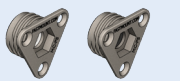
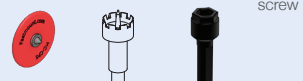


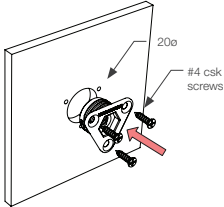
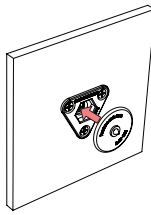
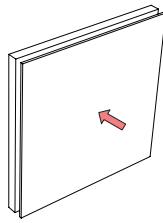
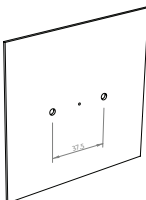
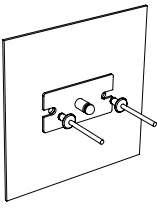
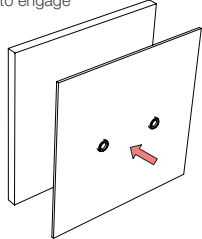
METAL MC RANGE

MC-SM5 INSTALLATION GUIDE

MC-SM5 Metal Male Clip – Surface Mount

MC-SM5 	USE WITH:	INSTALL WITH:
	MC-F5 MC-F10 	MC-CP5 200 drill MC-IT5 #4 CSK screw 
	Note: Installation of wall panels only.	

INSTALLATION STEPS MC-SM5 to MC-F5

<p>1 Drill hole into support frame, fit MC-F5 or MC-F10 with MC-IT5 tool. Option: screw fix with #4 CSK screws</p>  <p>Note: min. 13mm deep for self-tapping into plywood or similar</p>	<p>2 Insert MC-CP5 into female clip to mark panel location</p> 	<p>3 Press panel firmly in position to mark correct MC-SM5 location</p> 
<p>4 Drill holes for screw or rivet fixing. Holes should be a minimum 19mm away from mark</p> 	<p>5 Position MC-SM5 and screw or rivet fix to panel</p> 	<p>6 Press panel against substrate to engage</p> 

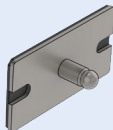
MORE INFO: SETOUT GUIDE TD-02, 09, 12. PRODUCT SHEET MC-05

METAL MC RANGE

MC-SM5-VHBFR INSTALLATION GUIDE

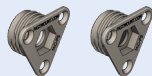
MC-SM5-VHBFR Metal Male Clip – Adhesive Mount Fire Rated

MC-SM5-VHBFR



USE WITH:

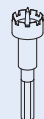
MC-F5 MC-F10



Note: Installation of wall panels only.

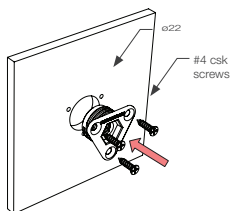
INSTALL WITH:

20Ø drill #4 CSK screw

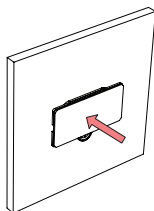


INSTALLATION STEPS MC-SM5-VHBFR to MC-F5

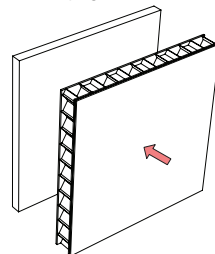
- 1** Drill hole into support frame, fit MC-F5 or MC-F10 with MC-IT5 tool. Option: screw fix with #4 CSK screws



- 2** Clip MC-SM5-VHB into female clip, and remove protective backing from adhesive



- 3** Align panel into correct position and press firmly against substrate to fix.



MORE INFO: SETOUT GUIDE TD-02, 09, 12. PRODUCT SHEET MC-05