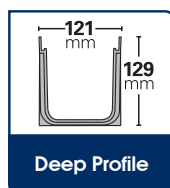
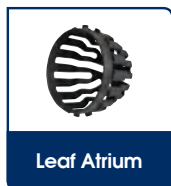


Complete Modern Drainage System

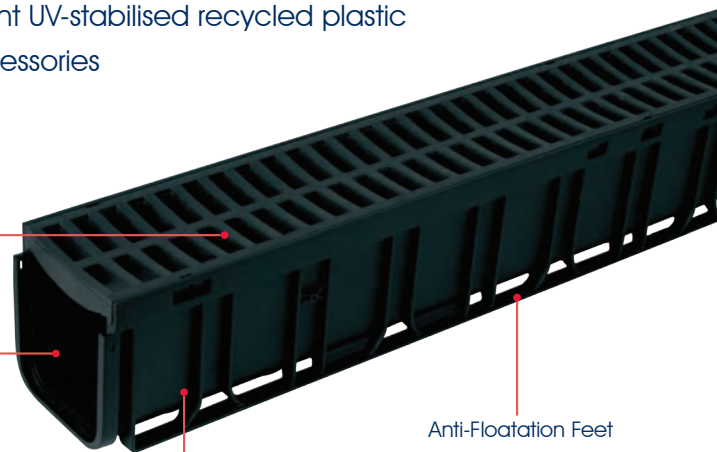
- Ideal for collection of high surfacewater flows in large domestic & light commercial applications
- Made in Australia from tough, durable and light-weight UV-stabilised recycled plastic
- Easy clip-together joining for all Rain Drain range accessories
- Comes in 1m or 3m lengths
- All grates comply to Australian Standards

Components:



Easy interchangeable clip-in grates. Suits all RELN channel grates

Lock Rain Drain ends together easily to create sturdy, longer channels



9 Bottom Outlet positions to choose from.

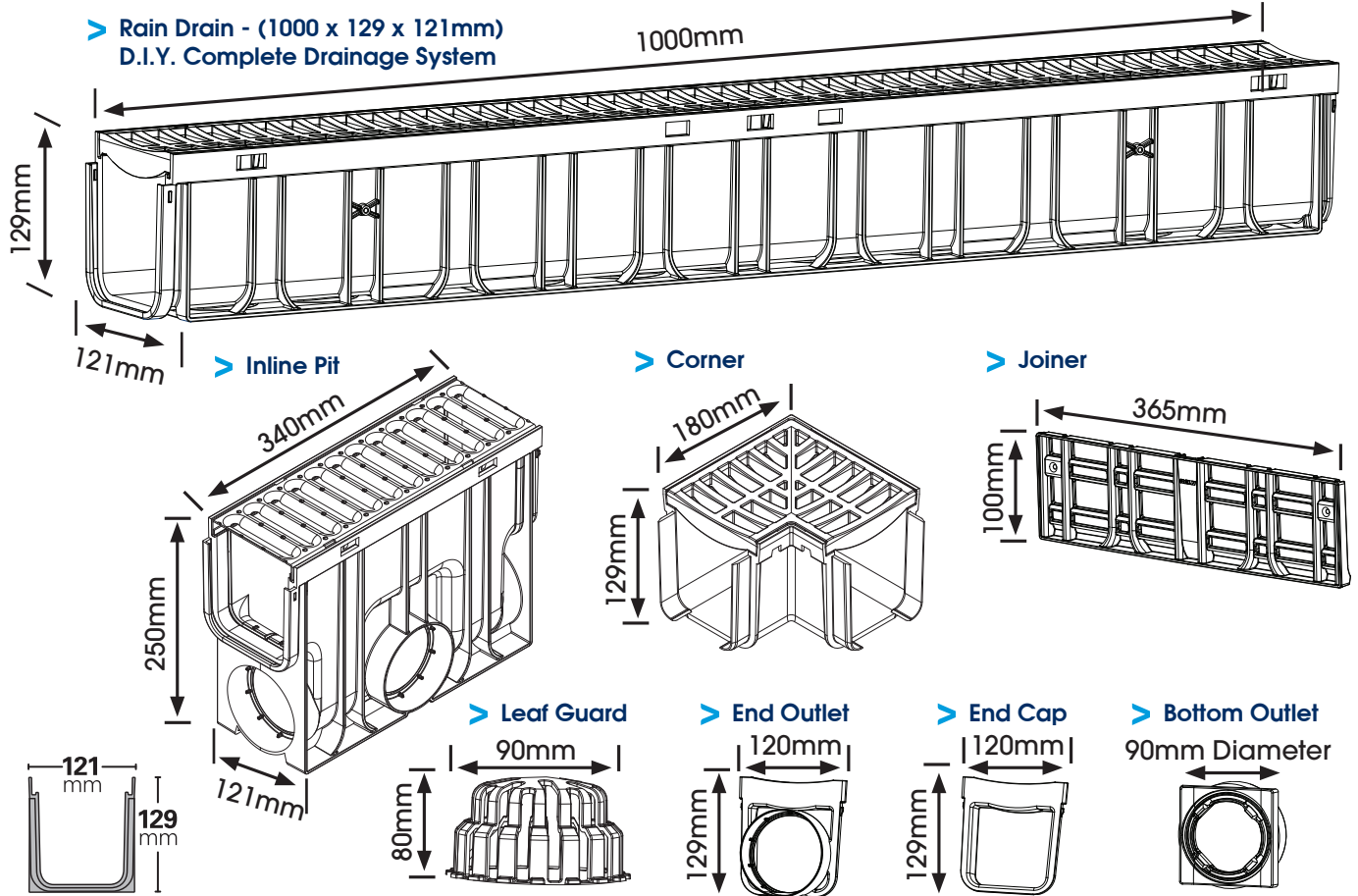
Bottom Outlet fits 90mm PVC Stormwater pipe



Rain Drain - Complete Modern Drainage System



RELN Rain Drain is the complete modern drainage system, ideal wherever high volumes of surface water flows, either in a domestic or commercial environment. Rain Drain is flexible enough to adapt to left and right extensions, and is available in all RELN grates, making it a top all round drain for when it rains!



- Ideal for collection of high surface water flows in large domestic and light commercial applications
- Designed to withstand 5 tonne vehicle weight
- Tough, durable and lightweight UV stabilised recycled plastic
- Available in 1m and 3m lengths
- Australian Made
- Lock-in clips reduce channel movement
- Hold down feet stop floatation during pouring of concrete
- Available in all RELN grates
- Easily interchangeable clip in grates
- Easy clip-together joining for all Rain Drain range accessories
- Bottom outlet adapter for quick and easy installation

- Bottom outlet fits 90mm PVC stormwater pipe
- 9 bottom outlets to choose from, for maximum flexibility
- 90° corner for left or right extensions

Grate Options: (11.3cm x 2.5cm x 1m): Plastic in Black, Sandstone, Terracotta, Portland Grey and Heritage Green. Black Heel Guard Plastic, Architectural, Stainless Steel, Galvanised Steel, Civil Ductile Iron

Range: 1m and 3m Channel, Inline Pit, Corner, Joiner, Leaf Guard, End Cap, End Outlet and Bottom Outlet Adapter, Garage Pack

Display: Hang Pad and Flyer available

> Frequently Asked Questions

Q1. What is the difference between Storm Mate and Rain Mate?

A. Both are great for straight-line drainage, however Rain Mate comes with 9 bottom outlet options for maximum design flexibility, and a bottom outlet adapter which fits 90mm PVC stormwater pipe.

Q2. What is the best grate for busy pedestrian areas?

A. Rain Mate, Rain Drain and Drain Trade can all be fitted with RELN's Heel Guard plastic grate or RELN's 316 Stainless Steel Architectural grate. Both have a residential wheel loading of up to 1.5 Tonnes when installed correctly.

Q3. Can I change or replace the grate at a later stage?

A. Yes, all Reln grates Traditional, Heel Guard Galvanised, Stainless, Architectural and Ductile interchange with Reln complete channel range.

Q4. Can I use the same grate on Rain Mate, Rain Drain and Rain Drain Trade?

A. All our grates for Storm Mate, Storm Drain, Rain Mate, Rain Drain and Rain Drain Trade are interchangeable, and fit each channel perfectly. Simply click grate into channel!



1m Channels complete with Grate

**Rain Drain - 1m complete
with Black Plastic Grate**

Product Code: 003515

Weight: 4.1kg

Load Rating:
5 Tonne in Concrete
**Rain Drain - 1m complete
with Black Heel Guard Grate**

Product Code: 003520

Weight: 3.2kg

Load Rating:
5 Tonne in Concrete
**Rain Drain - 1m complete
with Galvanised Steel Grate**

Product Code: 003525

Weight: 4.2kg

Load Rating:
5 Tonne in Concrete
**Rain Drain - 1m complete
with Stainless Steel Grate**

Product Code: 003526

Weight: 4kg

Load Rating:
5 Tonne in Concrete
**Rain Drain - 1m complete
with 316 Architectural
Steel Grate**

Product Code: 003527

Weight: 5kg

Load Rating:
5 Tonne in Concrete
**Rain Drain - 1m complete
with Sandstone Plastic Grate**

Product Code: 003517

Weight: 4.2kg

Load Rating:
5 Tonne in Concrete
**Rain Drain - 1m complete
with Terracotta Plastic Grate**

Product Code: 003516

Weight: 4.2kg

Load Rating:
5 Tonne in Concrete
**Rain Drain - 1m complete
with Portland
Grey Plastic Grate**

Product Code: 003518

Weight: 4.2kg

Load Rating:
5 Tonne in Concrete



1m Channels complete with Grate / Accessories / Concrete Tape

Rain Drain - 1m complete with Heritage Green Plastic Grate



Product Code: 003519

Weight: 4.2kg

Load Rating:
5 Tonne in Concrete



9 319022 035190

Rain Drain - End Cap



Product Code: 003503

Weight: 0.05kg

Load Rating:
N/A



9 319022 035039

Rain Drain - End Outlet



Product Code: 003504

Weight: 0.6kg

Load Rating:
5 Tonne in Concrete



9 319022 035046

Rain Drain - Joiner



Product Code: 003501

Weight: 0.3kg

Load Rating:
N/A



9 319022 035015

Rain Drain - Leaf Guard



Product Code: 003506

Weight: 0.02kg

Load Rating:
N/A



9 319022 035060

Rain Drain - Bottom Outlet



Product Code: 003505

Weight: 0.03kg

Load Rating:
5 Tonne in Concrete



9 319022 035053

Concrete Tape 50m



Product Code: 000069

Weight: 0.5kg

Features & Benefits:
Protect your grate
when pouring concrete
Easily removable



9 319022 000693

Concrete Tape 9m



Product Code: 000070

Weight: 0.12kg

Features & Benefits:
Protect your grate
when pouring concrete
Easily removable



9 319022 000709



3m Channel Grates Only

Rain Drain - 3m complete with Black Plastic Grate

Product Code: 003540

Weight: 9.1kg

Load Rating:
5 Tonne in Concrete



Rain Drain - 3m complete with Black Heel Guard Plastic Grate

Product Code: 003545

Weight: 5.7kg

Load Rating:
5 Tonne in Concrete



Rain Drain - 3m complete with Galvanised Steel Grate

Product Code: 003550

Weight: 6.7kg

Load Rating:
5 Tonne in Concrete



Rain Drain - 3m complete with Stainless Steel Grate

Product Code: 003551

Weight: 6.5kg

Load Rating:
5 Tonne in Concrete



Rain Drain - 3m complete with Sandstone Plastic Grate

Product Code: 003542

Weight: 9.2kg

Load Rating:
5 Tonne in Concrete



Rain Drain - 3m complete with Terracotta Plastic Grate

Product Code: 003541

Weight: 9.2kg

Load Rating:
5 Tonne in Concrete



Rain Drain - 3m complete with Portland Grey Plastic Grate

Product Code: 003543

Weight: 9.2kg

Load Rating:
5 Tonne in Concrete



Rain Drain - 3m complete with Heritage Green Plastic Grate

Product Code: 003544

Weight: 6.7kg

Load Rating:
5 Tonne in Concrete





Channel Grates / 90° Corner complete with Grate

1m - Black Plastic Grate Only



Perfect for paths, driveways and gardens

Product Code: 002079

Weight: 1.6kg

Load Rating:
5 Tonne in Concrete



9 319022 020790

1m - Black Heel Guard Plastic Grate Only



Perfect for pedestrian areas

Product Code: 002071

Weight: 0.7kg

Load Rating:
5 Tonne in Concrete



9 319022 020714

1m - Galvanised Steel Grate Only



Hard wearing heavy duty galvanised steel grate

Product Code: 002089

Weight: 1.7kg

Load Rating:
5 Tonne in Concrete



9 319022 020899

1m - Stainless Steel Grate Only



Durability and appearance with 304 Stainless Steel

Product Code: 002090

Weight: 1.5kg

Load Rating:
5 Tonne in Concrete



9 319022 020905

1m - 316 Architectural Steel Grate complete with Surround Only



316 Stainless Steel wedge wire perfect for high end pedestrian applications

Product Code: 003227

Weight: 2.5kg

Load Rating:
5 Tonne in Concrete



9 319022 032274

500mm - Ductile Iron Grate Only - Class C - Civil



Perfect for commercial applications with slow moving heavy vehicles

Product Code: 002091

Weight: 2.4kg

Load Rating:
CLASS C
5000kg Heavy Duty



9 319022 020912

1m - Sandstone Plastic Grate Only



Perfect for paths, driveways and gardens

Product Code: 002095

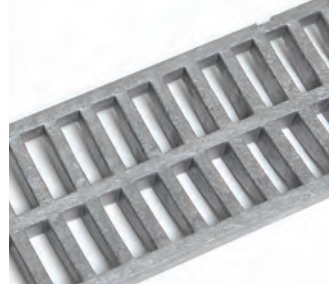
Weight: 1.7kg

Load Rating:
5 Tonne in Concrete



9 319022 020950

1m - Portland Grey Plastic Grate Only



Perfect for paths, driveways and gardens

Product Code: 001203

Weight: 1.7kg

Load Rating:
5 Tonne in Concrete

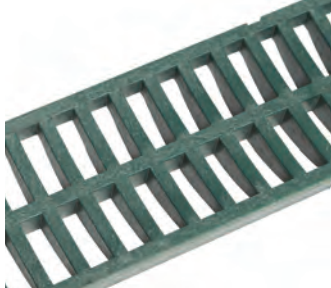


9 319022 012030



Channel Grates Only / 90° Corner complete with Gate

1m - Heritage Green Plastic Gate Only



Perfect for paths, driveways and gardens

Product Code: 002086

Weight: 1.7kg

Load Rating:
5 Tonne in Concrete



1m - Terracotta Plastic Gate Only



Perfect for paths, driveways and gardens

Product Code: 002093

Weight: 1.7kg

Load Rating:
5 Tonne in Concrete



Rain Drain - Corner complete with Black Plastic Gate



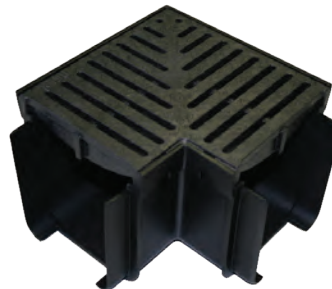
Product Code: 003565

Weight: 0.42kg

Load Rating:
5 Tonne in Concrete



Rain Drain - Corner complete with Black Heel Guard Plastic Gate



Product Code: 003570

Weight: 0.49kg

Load Rating:
5 Tonne in Concrete



Rain Drain - Corner complete with Galvanised Steel Gate



Product Code: 003575

Weight: 0.51kg

Load Rating:
5 Tonne in Concrete



Rain Drain - Corner complete with Stainless Steel Gate



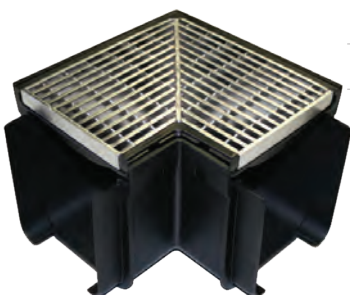
Product Code: 003576

Weight: 0.51kg

Load Rating:
5 Tonne in Concrete



Rain Drain - Corner complete with 316 Architectural Gate



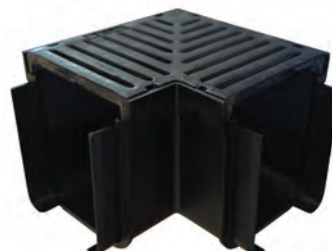
Product Code: 003577

Weight: 0.75kg

Load Rating:
5 Tonne in Concrete



Rain Drain - Corner complete with Ductile Iron Gate - Class C



Product Code: 003581

Weight: 1.35kg

Load Rating:
CLASS C
5000kg Heavy Duty



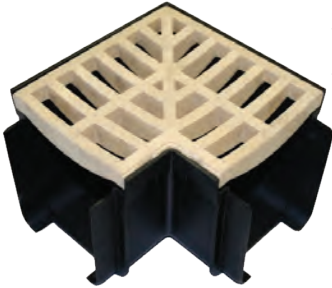


90° Corner complete with Grate / Inline Pit complete with Grate

**Rain Drain - Corner
complete with Sandstone
Plastic Grate**

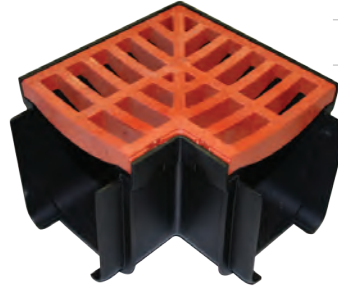
Product Code: 003567

Weight: 0.42kg

Load Rating:
5 Tonne in Concrete
**Rain Drain - Corner complete
with Terracotta Plastic Grate**

Product Code: 003566

Weight: 0.42kg

Load Rating:
5 Tonne in Concrete
**Rain Drain - Corner
complete with Portland
Grey Plastic Grate**

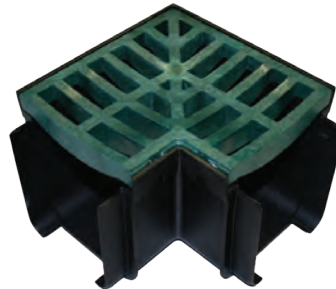
Product Code: 003568

Weight: 0.42kg

Load Rating:
5 Tonne in Concrete
**Rain Drain - Corner
complete with Heritage
Green Plastic Grate**

Product Code: 003569

Weight: 0.42kg

Load Rating:
5 Tonne in Concrete
**Rain Drain - Inline Pit
complete with Black
Plastic Grate**

Product Code: 003585

Weight: 1.2kg

Load Rating:
5 Tonne in Concrete
**Rain Drain - Inline Pit
complete with Black
Heel Guard Plastic Grate**

Product Code: 003590

Weight: 1.23kg

Load Rating:
5 Tonne in Concrete
**Rain Drain - Inline Pit
complete with
Galvanised Grate**

Product Code: 003595

Weight: 1.2kg

Load Rating:
5 Tonne in Concrete
**Rain Drain - Inline Pit
complete with Stainless
Steel Grate**

Product Code: 003596

Weight: 1.2kg

Load Rating:
5 Tonne in Concrete



Inline Pit complete with Grate / Garage Pack

Rain Drain - Inline Pit complete with Architectural Grate



Product Code: 003597

Weight: 1.2kg

Load Rating:
5 Tonne in Concrete



9 319022 035978

Rain Drain - Inline Pit complete with Ductile Iron Grate - Class C



Product Code: 003601

Weight: 2.45kg

Load Rating:

CLASS C
5000kg Heavy Duty



9 319022 036012

Rain Drain - Inline Pit complete with Sandstone Plastic Grate



Product Code: 003587

Weight: 1.23kg

Load Rating:
5 Tonne in Concrete



9 319022 035879

Rain Drain - Inline Pit complete with Terracotta Plastic Grate



Product Code: 003586

Weight: 1.23kg

Load Rating:
5 Tonne in Concrete



9 319022 035862

Rain Drain - Inline Pit complete with Portland Grey Plastic Grate



Product Code: 003588

Weight: 1.23kg

Load Rating:
5 Tonne in Concrete



9 319022 035886

Rain Drain - Inline Pit complete with Heritage Green Plastic Grate



Product Code: 003589

Weight: 1.2kg

Load Rating:
5 Tonne in Concrete



9 319022 035893

Rain Drain - Garage Pack complete with 4x1m Channel Black Plastic Grate, 1x End Cap, 1x End Outlet



Product Code: 003602

Weight: 8.52kg

Load Rating:
5 Tonne in Concrete



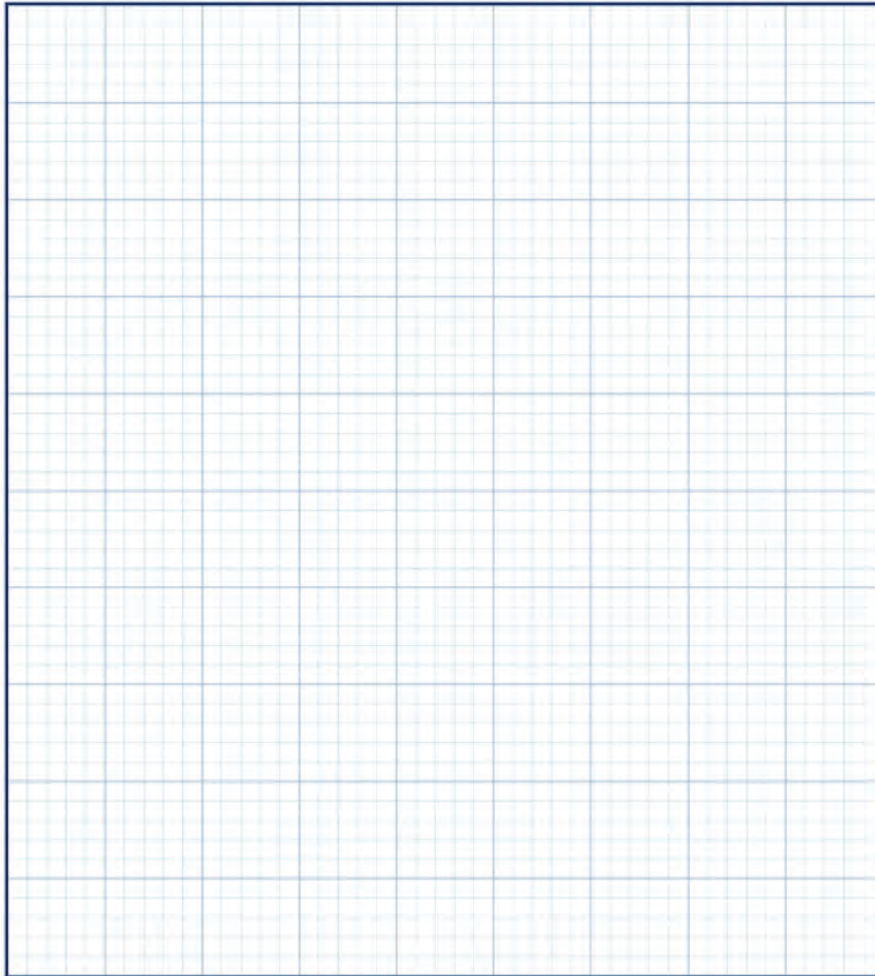
9 319022 036029





Drainage Planner

Design your own drainage system



1 Inline Pit
 Qty required



4 Leaf Guard
 Qty required



7 Bottom Outlet
 Qty required



2 Corner
 Qty required



5 End Cap
 Qty required



1m Channel Qty
 3m Channel Qty



3 Joiner
 Qty required



6 End Outlet
 Qty required

For more information
 or to view the video
 installation, visit
www.reln.com.au

Easy installation in four simple steps



1. Prepare Ground

- Prepare ground with 50mm deep compacted sand base
- Allow for a minimum of 100mm backfill of concrete on each side
- Fix a

string line to set finished surface level • For best run-off allow for a fall of approx 5mm every 1m length

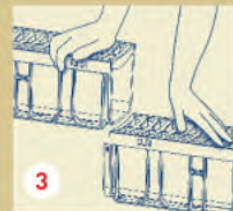


2. Lay Out

ASSEMBLE CHANNEL & GRATE PRIOR TO INSTALLATION

- Lay out Rain Drain® components to check

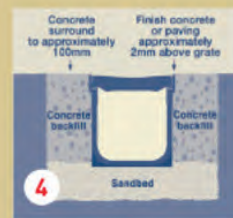
installation • Locate pipe outlet at lowest end of installation • Rain Drain® can be cut to length with saw



3. Join Components

- Join channels and components
- Joints and end caps can be sealed with silicone
- Join 90mm PVC

stormwater pipe to Inline Pit, End or Bottom Outlet with PVC plumbers glue



4. Pour Concrete

- Rain Drain® installations must be set in concrete
- Cover grate with tape to protect from concrete splash
- Pour concrete

and finish top surface 2mm above level of the grate • Allow full cure before removing grates or vehicle use – 3 days • Grates can be removed by inserting screw driver into slot and twisting gently to lift grate

