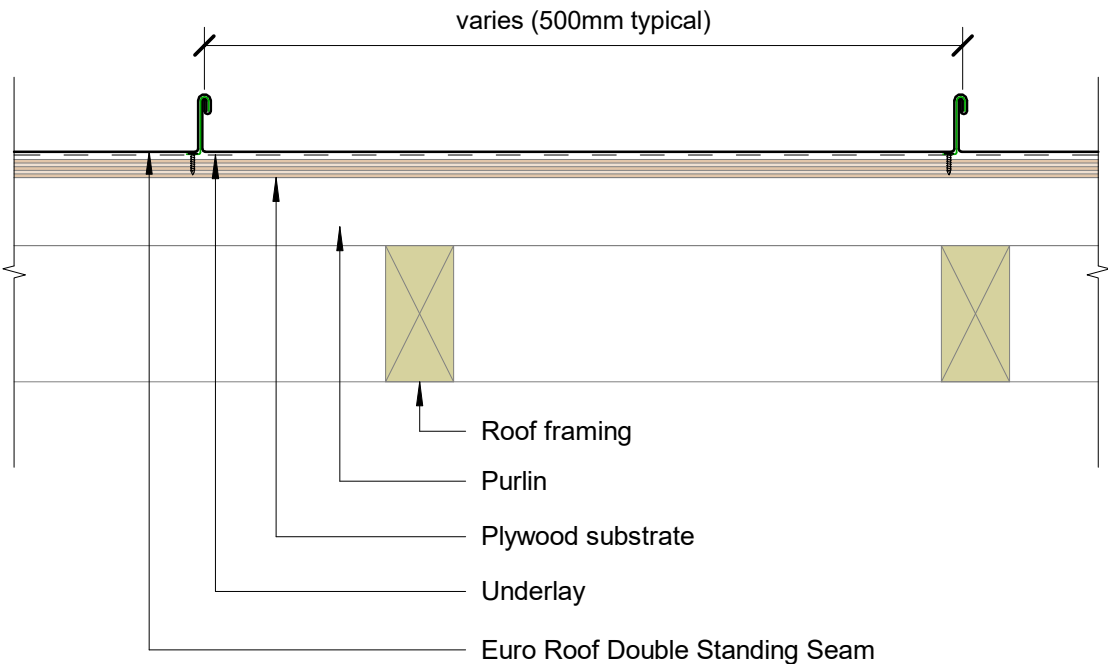
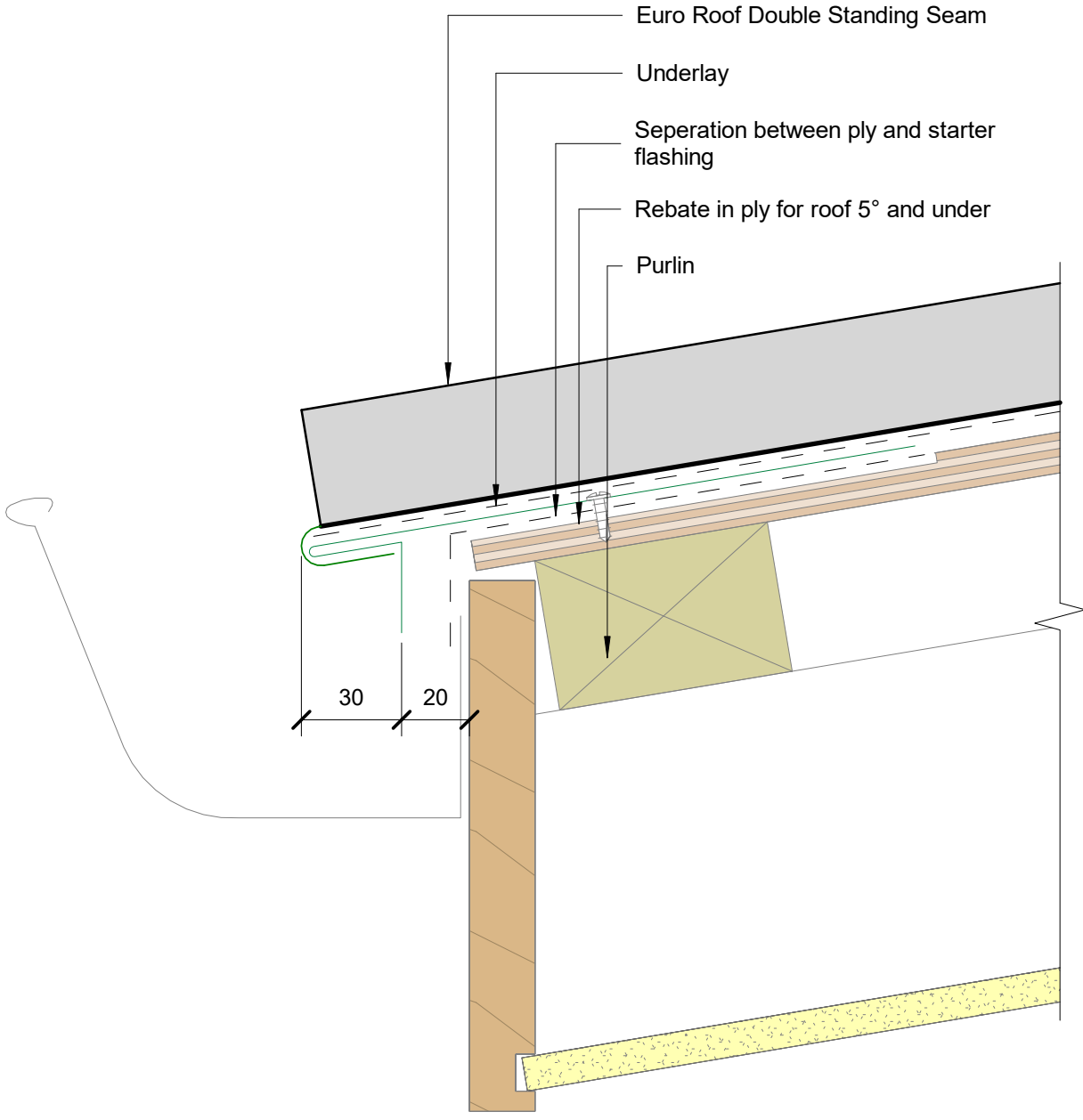


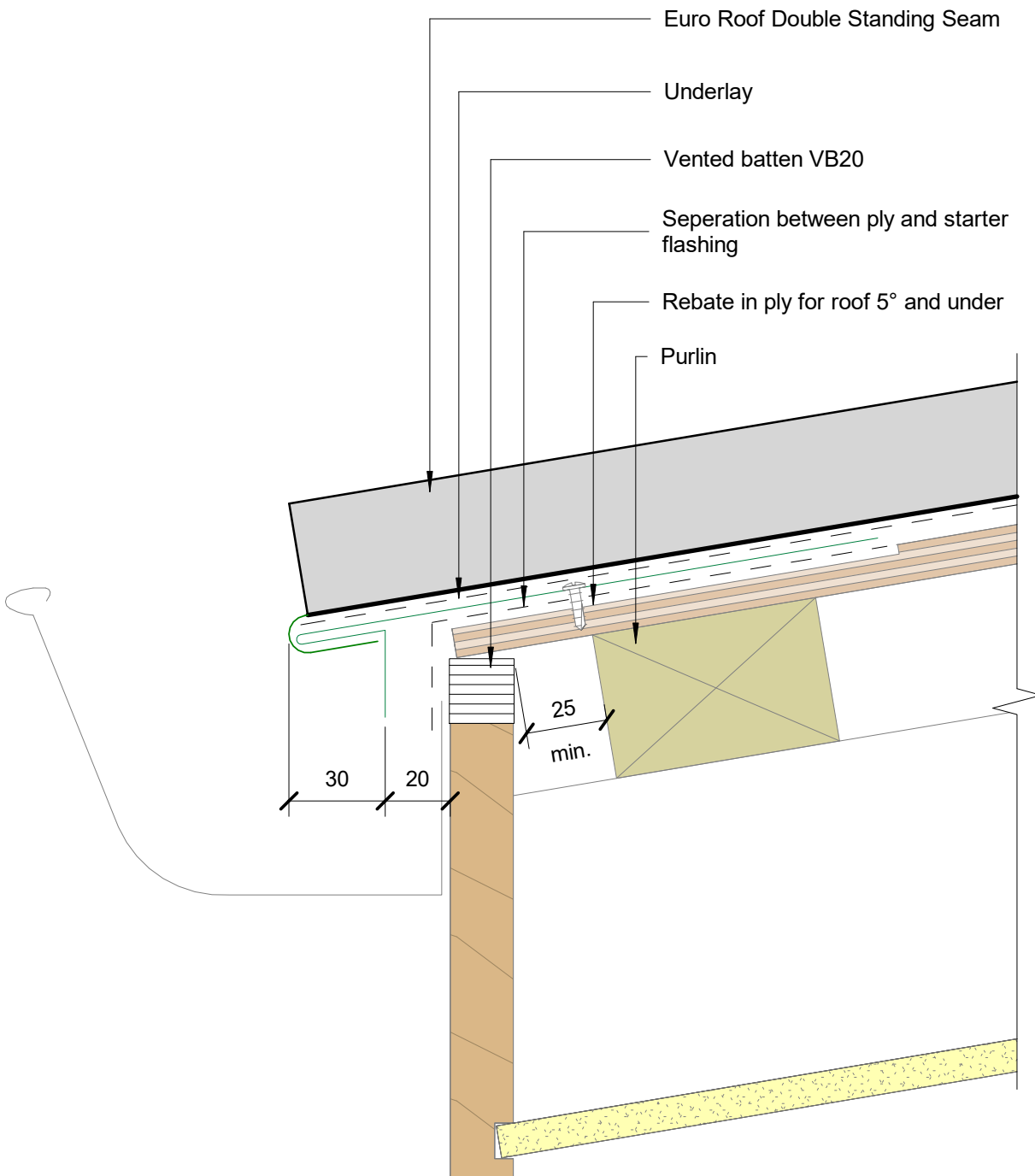
Euro Roof Double Standing Seam 38

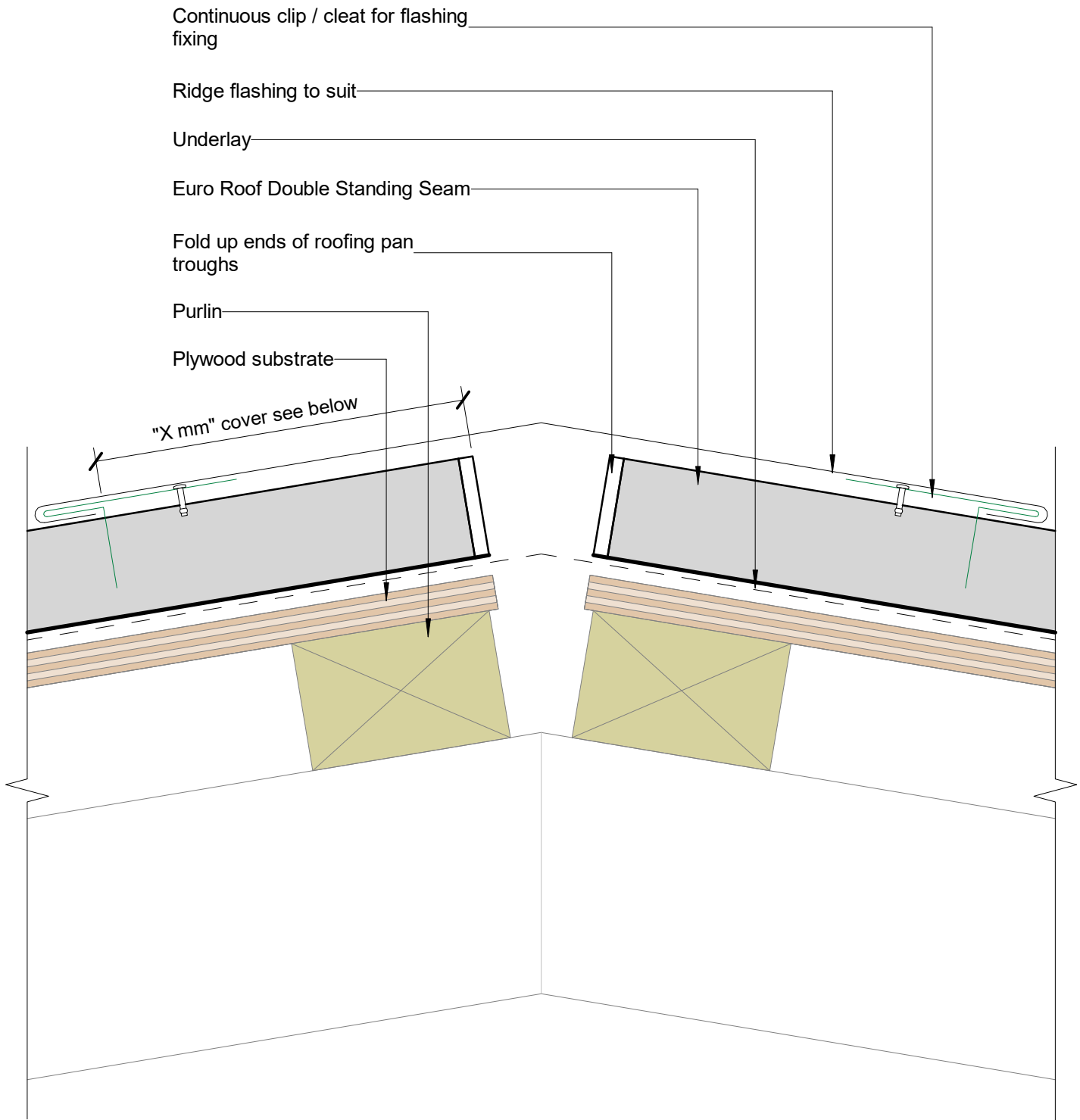
Scale 1:2



Scale 1:5

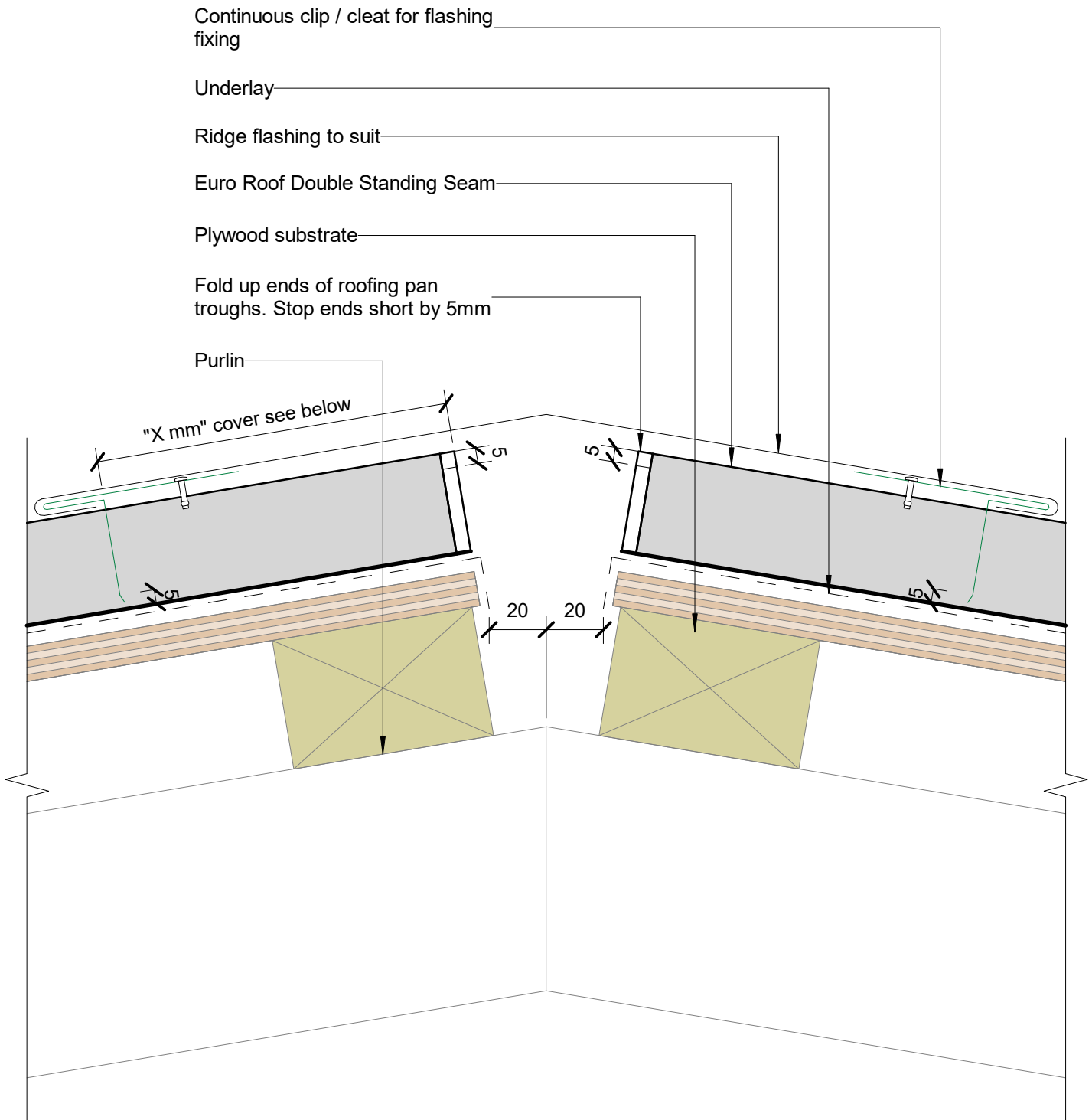






Aprons Typical (X mm):

- 130mm in situation 1: Low, Medium and High wind zones where roof pitch $\geq 10^\circ$
- 200mm in situation 2: All roof pitches in Very High wind zones
Low, Medium and High wind zones where roof pitch $\leq 10^\circ$
- 200mm in situation 3: All roof pitches in Extra High wind zones

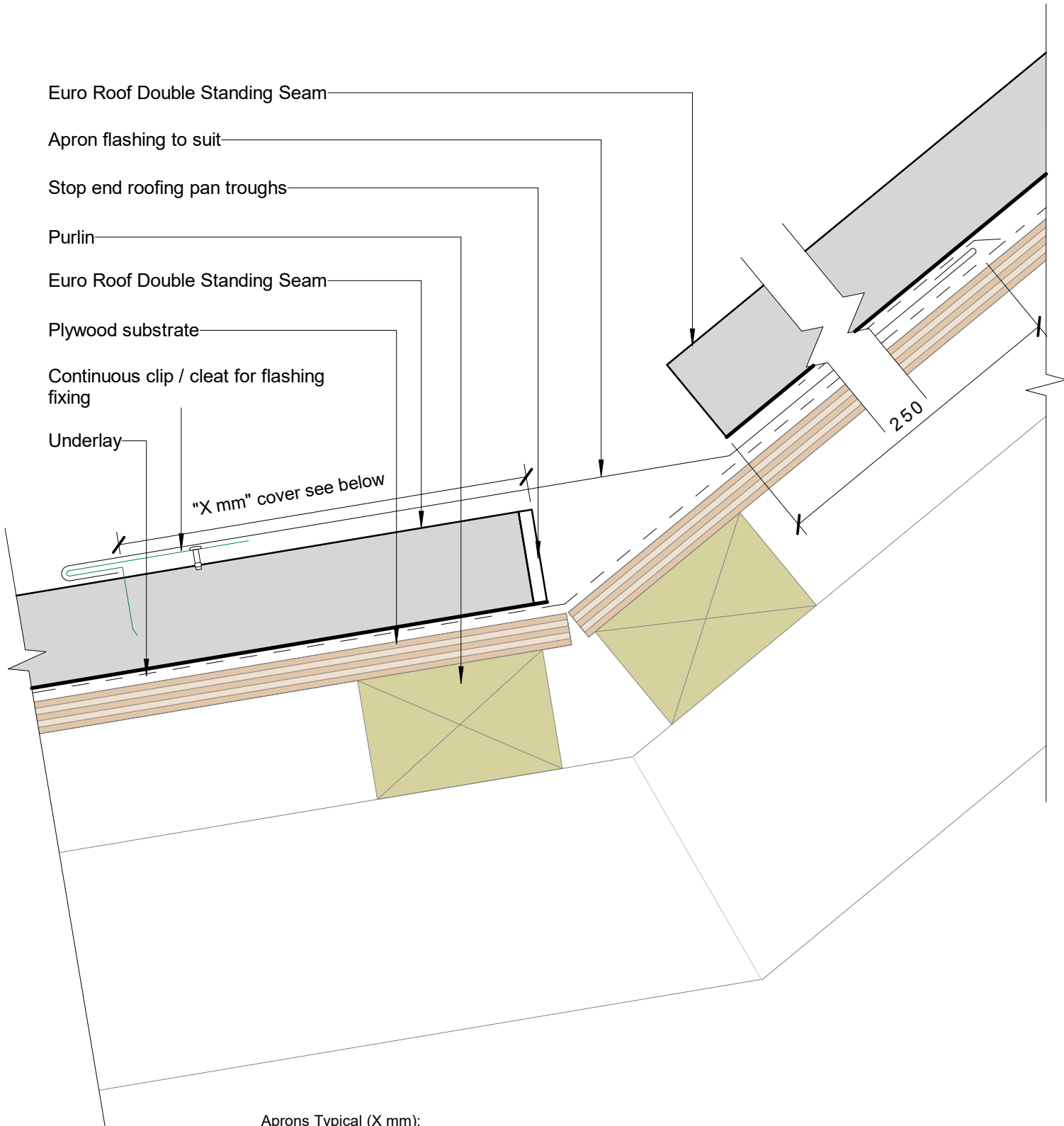


Aprons Typical (X mm):

130mm in situation 1: Low, Medium and High wind zones where roof pitch $\geq 10^\circ$

200mm in situation 2: All roof pitches in Very High wind zones
Low, Medium and High wind zones where roof pitch $\leq 10^\circ$

200mm in situation 3: All roof pitches in Extra High wind zones



Aprons Typical (X mm):

- 130mm in situation 1: Low, Medium and High wind zones where roof pitch $\geq 10^\circ$
- 200mm in situation 2: All roof pitches in Very High wind zones
Low, Medium and High wind zones where roof pitch $\leq 10^\circ$
- 200mm in situation 3: All roof pitches in Extra High wind zones

Timber batten to suit seam height
by builder

Stop end roofing pan troughs

Verge flashing to suit

Euro Roof Double Standing Seam

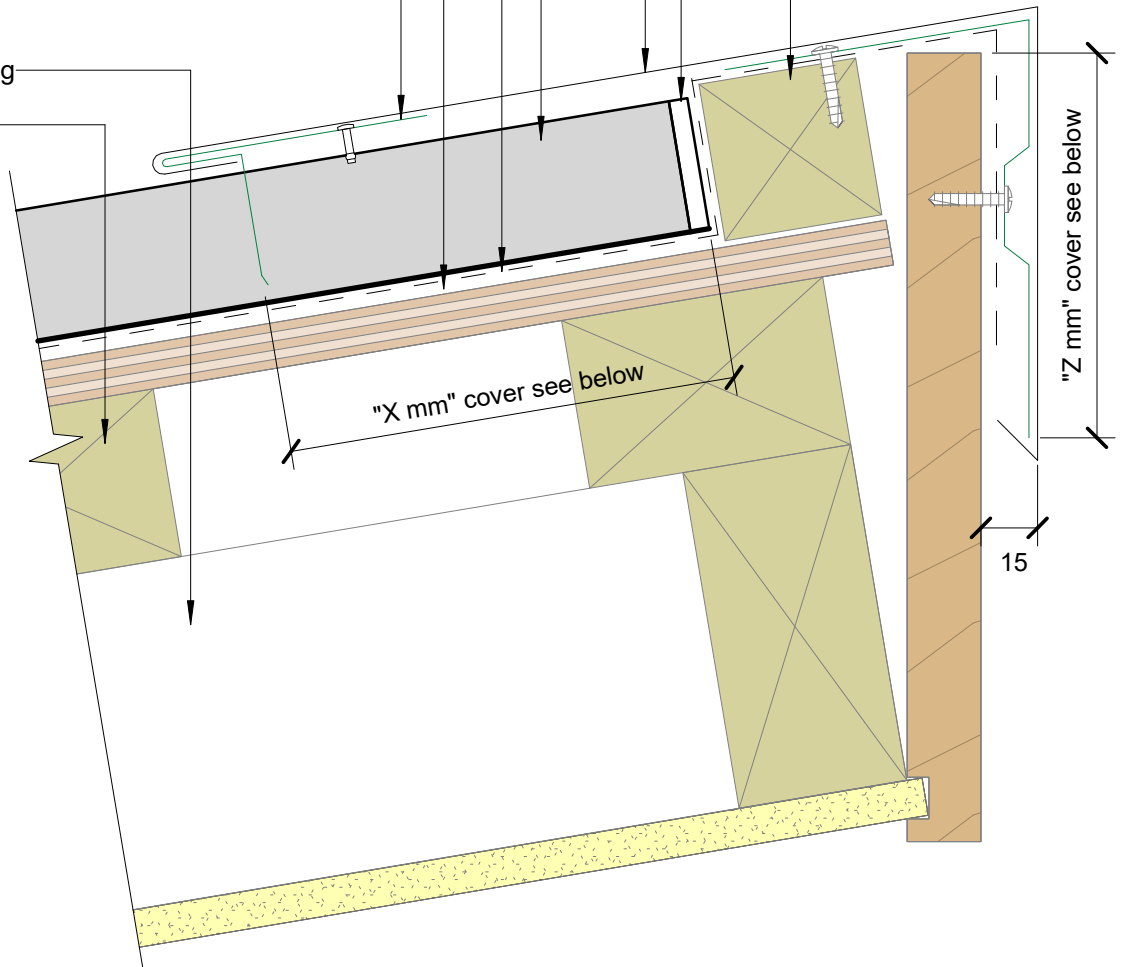
Underlay

Plywood substrate

Continuous clip / cleat for flashing
fixing

Roof framing

Purlin



Aprons Typical (X mm):

130mm in situation 1: Low, Medium and High wind zones where roof pitch $\geq 10^\circ$

200mm in situation 2: All roof pitches in Very High wind zones
Low, Medium and High wind zones where roof pitch $\leq 10^\circ$

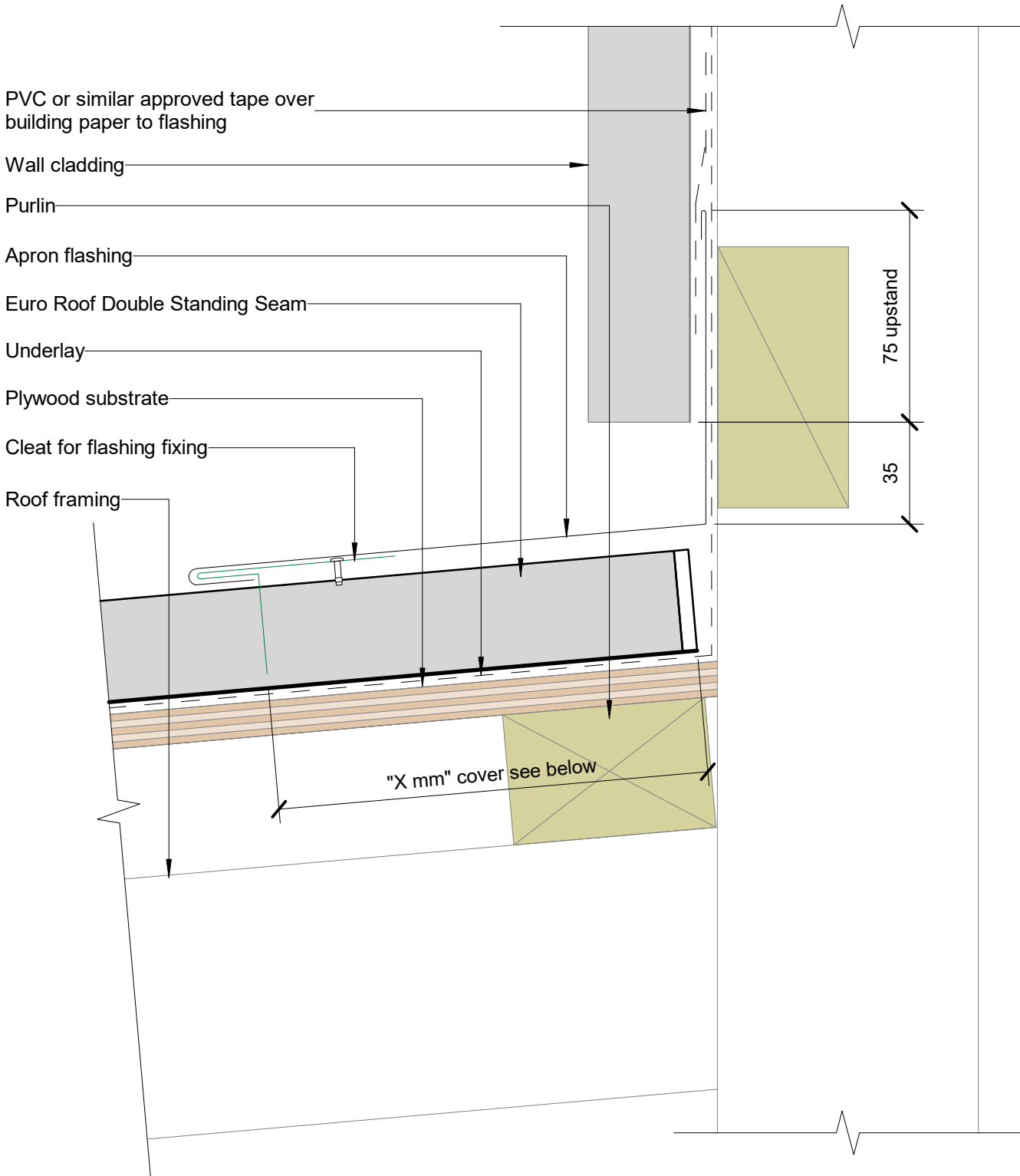
200mm in situation 3: All roof pitches in Extra High wind zones

Barge Typical (Z mm): excluding drip edge:

50mm in situation 1: Low, Medium and High wind zones where roof pitch $\geq 10^\circ$

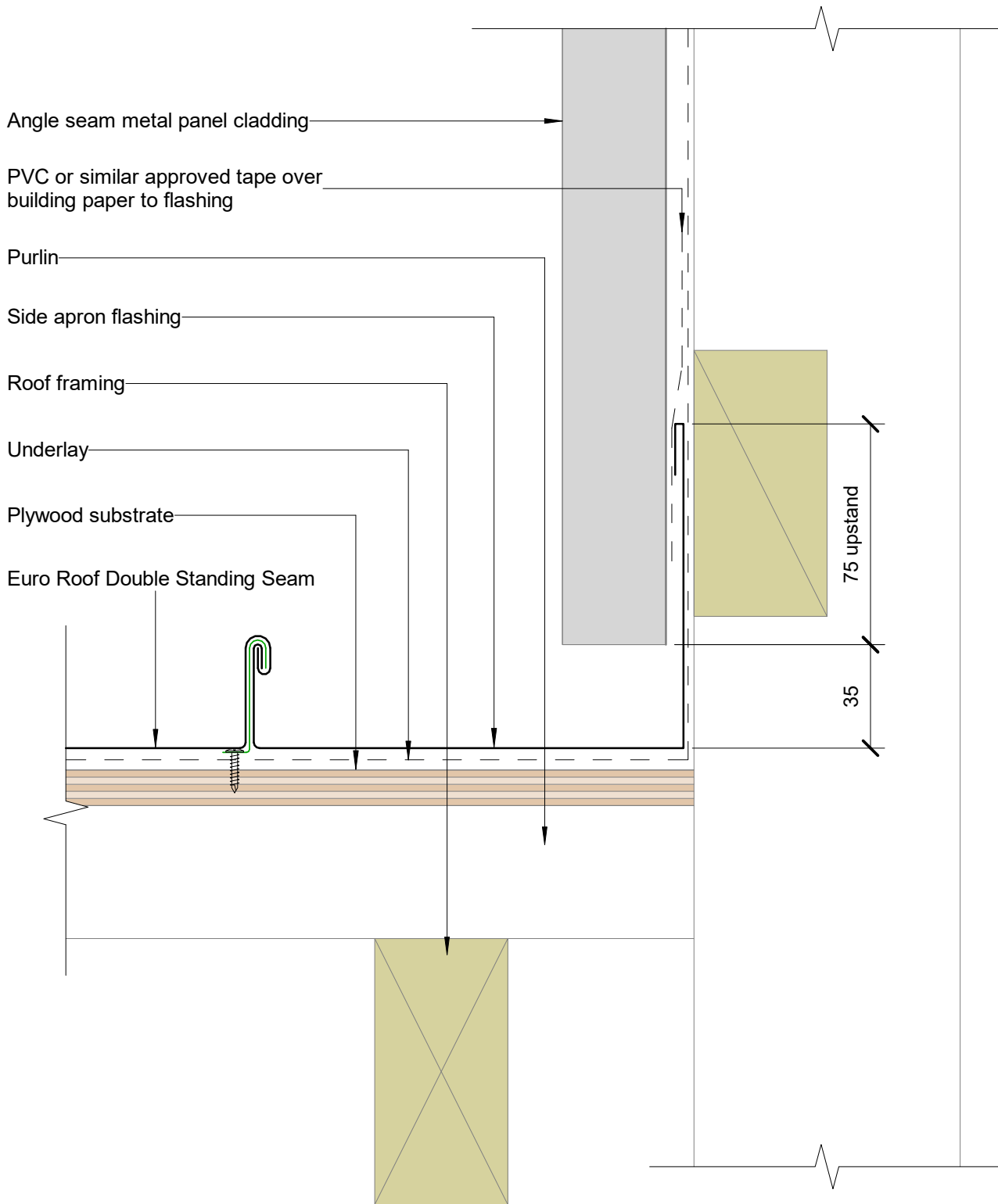
70mm in situation 2: All roof pitches in Very High wind zones
Low, Medium and High wind zones where roof pitch $\leq 10^\circ$

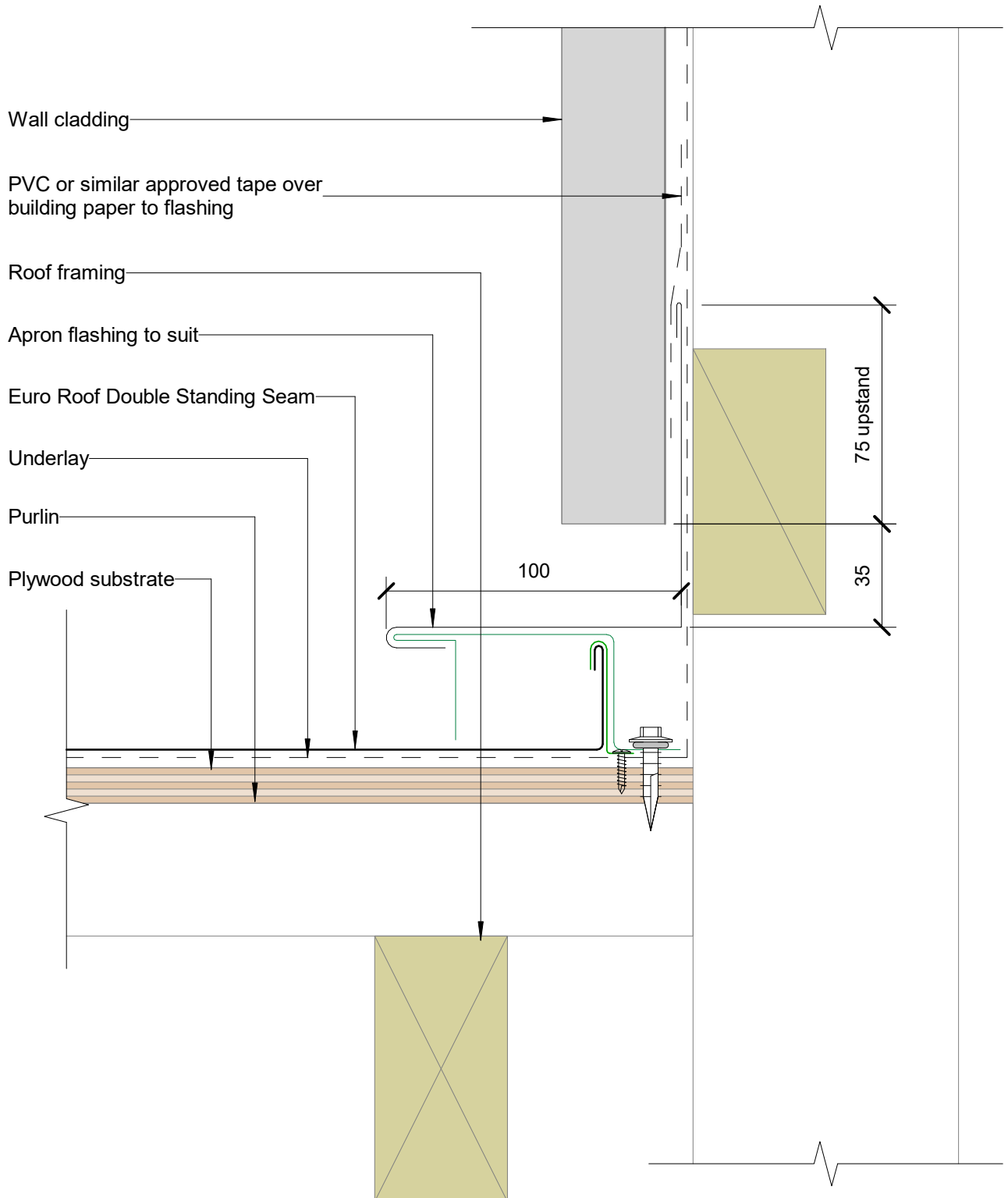
90mm in situation 3: All roof pitches in Extra High wind zones

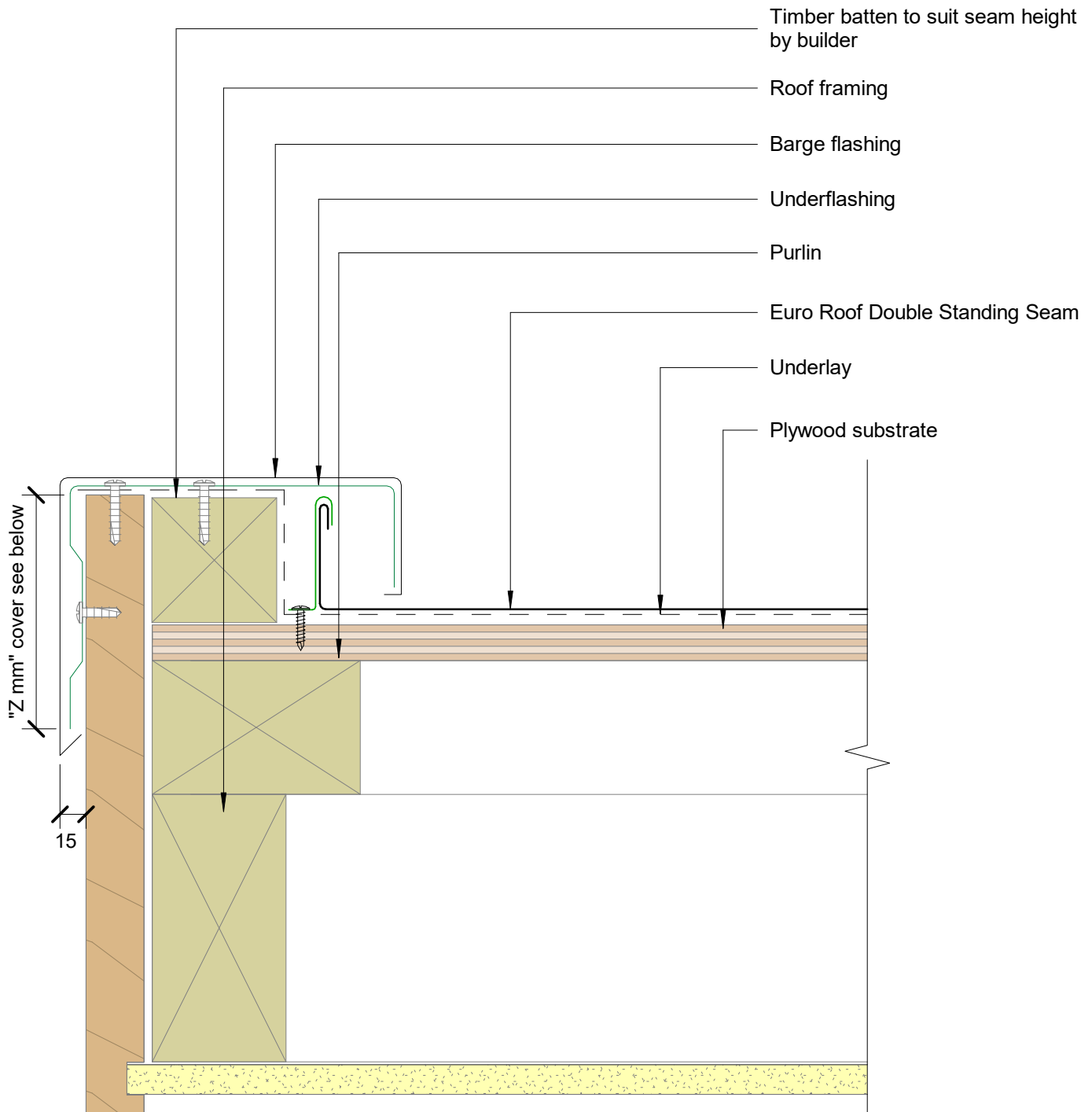


Aprons Typical (X mm):

- 130mm in situation 1: Low, Medium and High wind zones where roof pitch $\geq 10^\circ$
- 200mm in situation 2: All roof pitches in Very High wind zones
Low, Medium and High wind zones where roof pitch $\leq 10^\circ$
- 200mm in situation 3: All roof pitches in Extra High wind zones





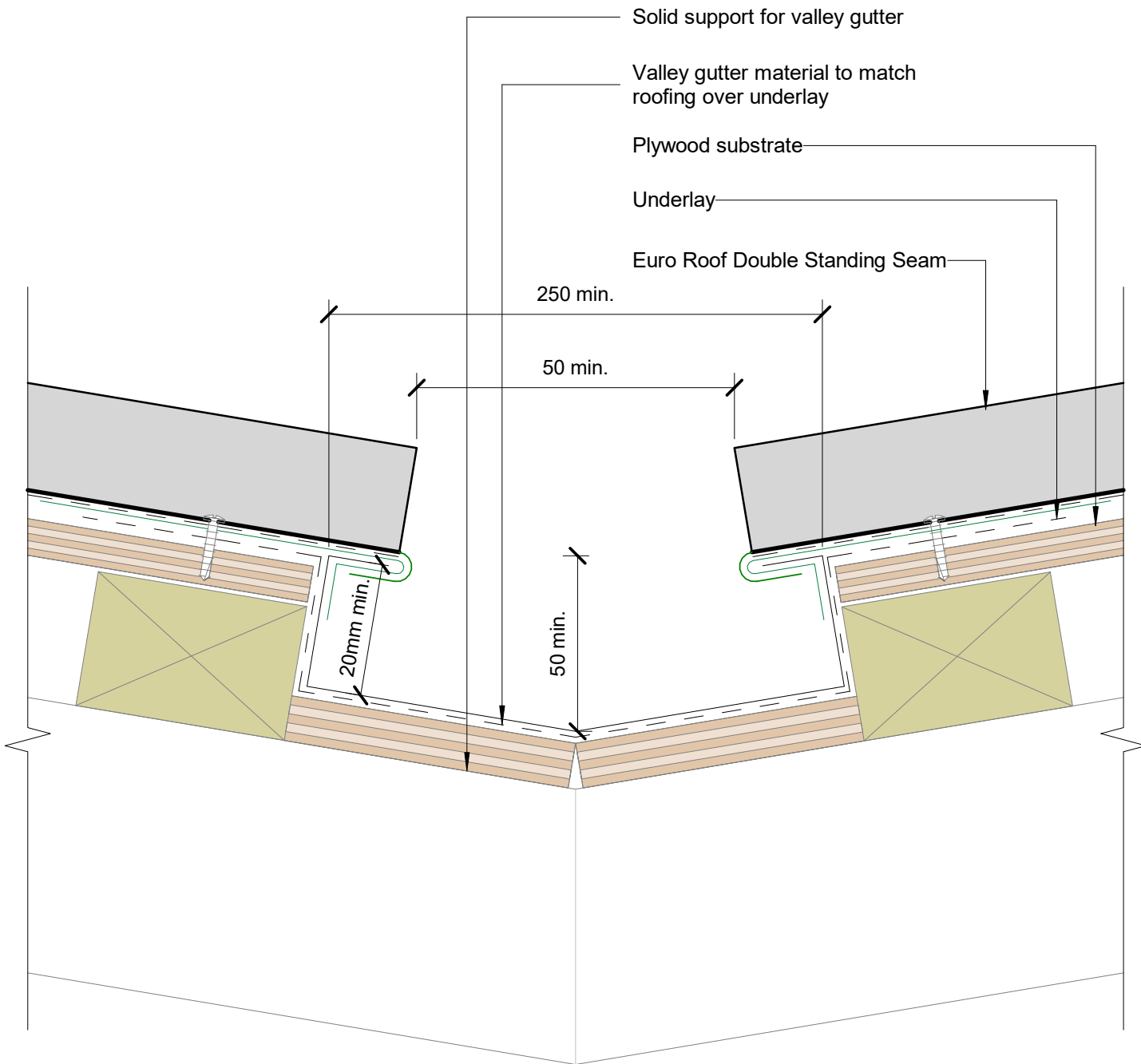


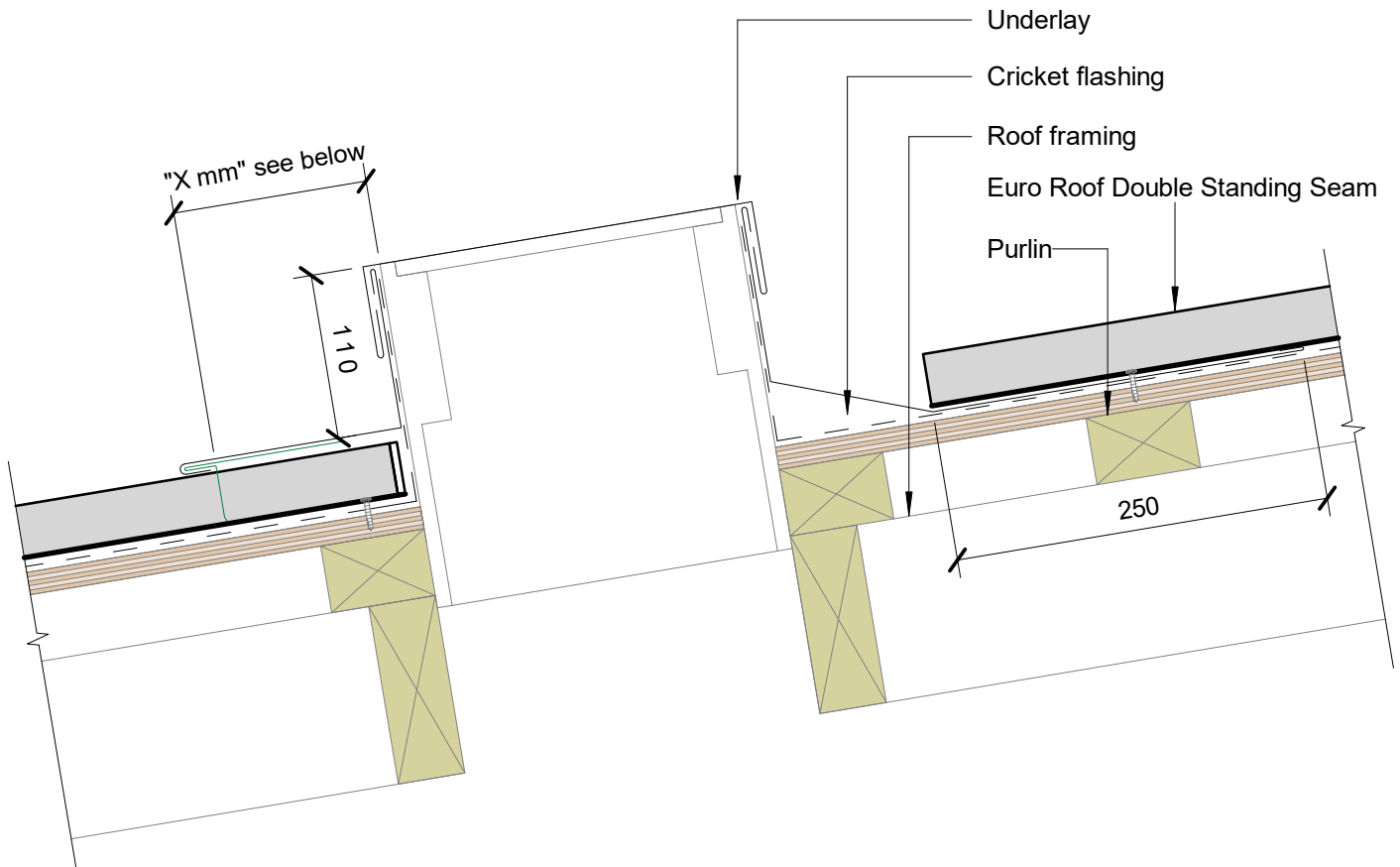
Barge Typical (Z mm): excluding drip edge:

50mm in situation 1: Low, Medium and High wind zones where roof pitch $\geq 10^\circ$

70mm in situation 2: All roof pitches in Very High wind zones
Low, Medium and High wind zones where roof pitch $\leq 10^\circ$

90mm in situation 3: All roof pitches in Extra High wind zones





Aprons Typical (X mm):

- 130mm in situation 1: Low, Medium and High wind zones where roof pitch $\geq 10^\circ$
- 200mm in situation 2: All roof pitches in Very High wind zones
Low, Medium and High wind zones where roof pitch $\leq 10^\circ$
- 200mm in situation 3: All roof pitches in Extra High wind zones

