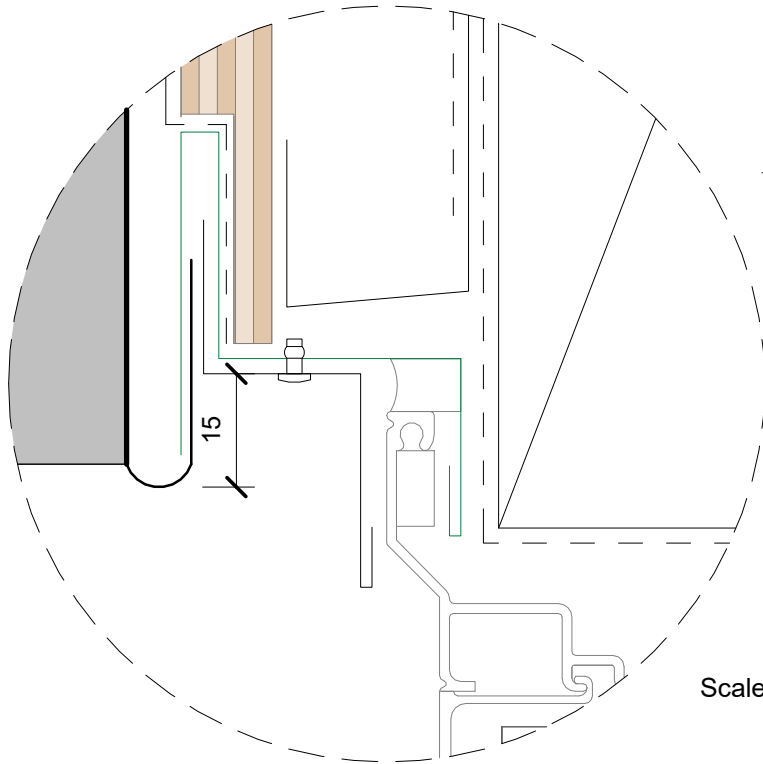
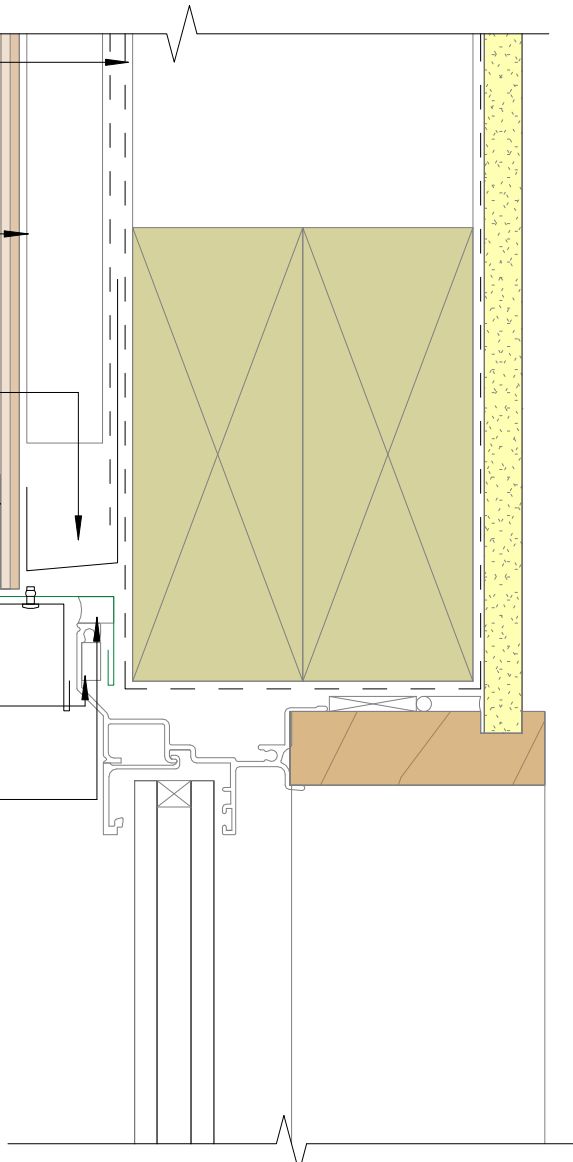


- Building wrap
- Underlay
- Euro Wall Roll Seam vertical
- Vertical cavity batten
- Plywood substrate
- Proprietary metal cavity closure by Metal Design Solutions, non punched fall to one side. 100mm into cavity each side of opening
- 50mm x 3mm rebate in ply
- Cell closed inseal tape by others
- 10mm gap between joinery and flashing, seal with MS silicone sealant - by others

15 drip edge



Scale 1:2



Scale 1:5