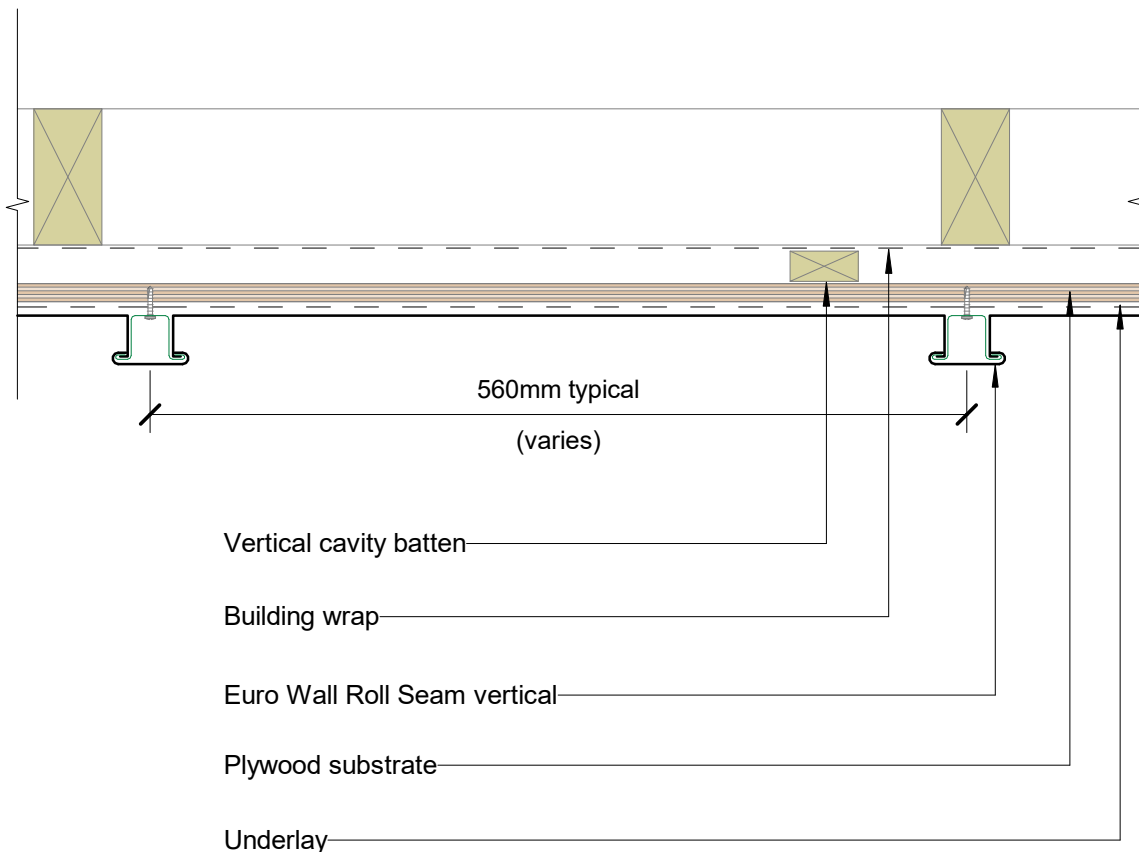
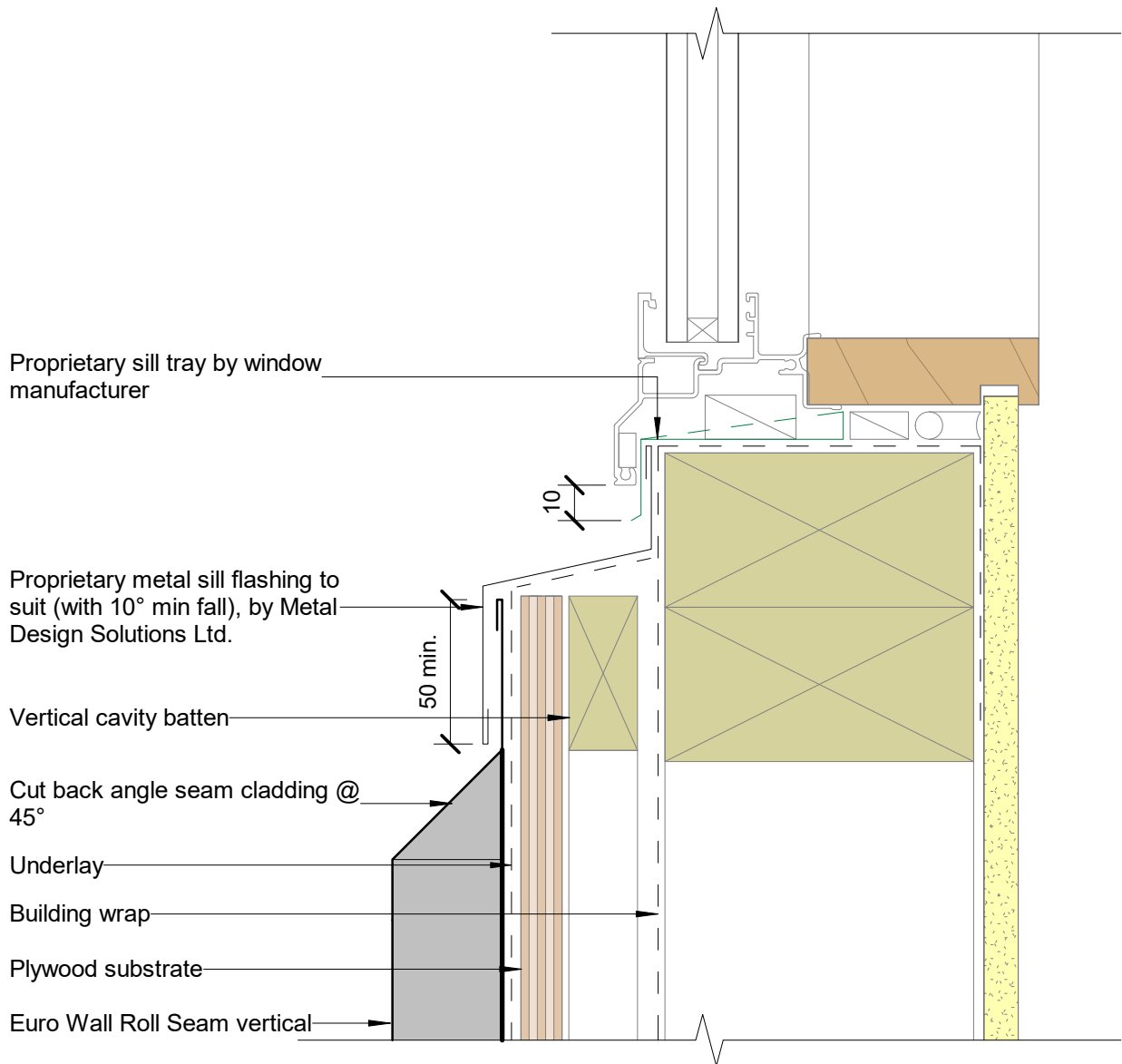


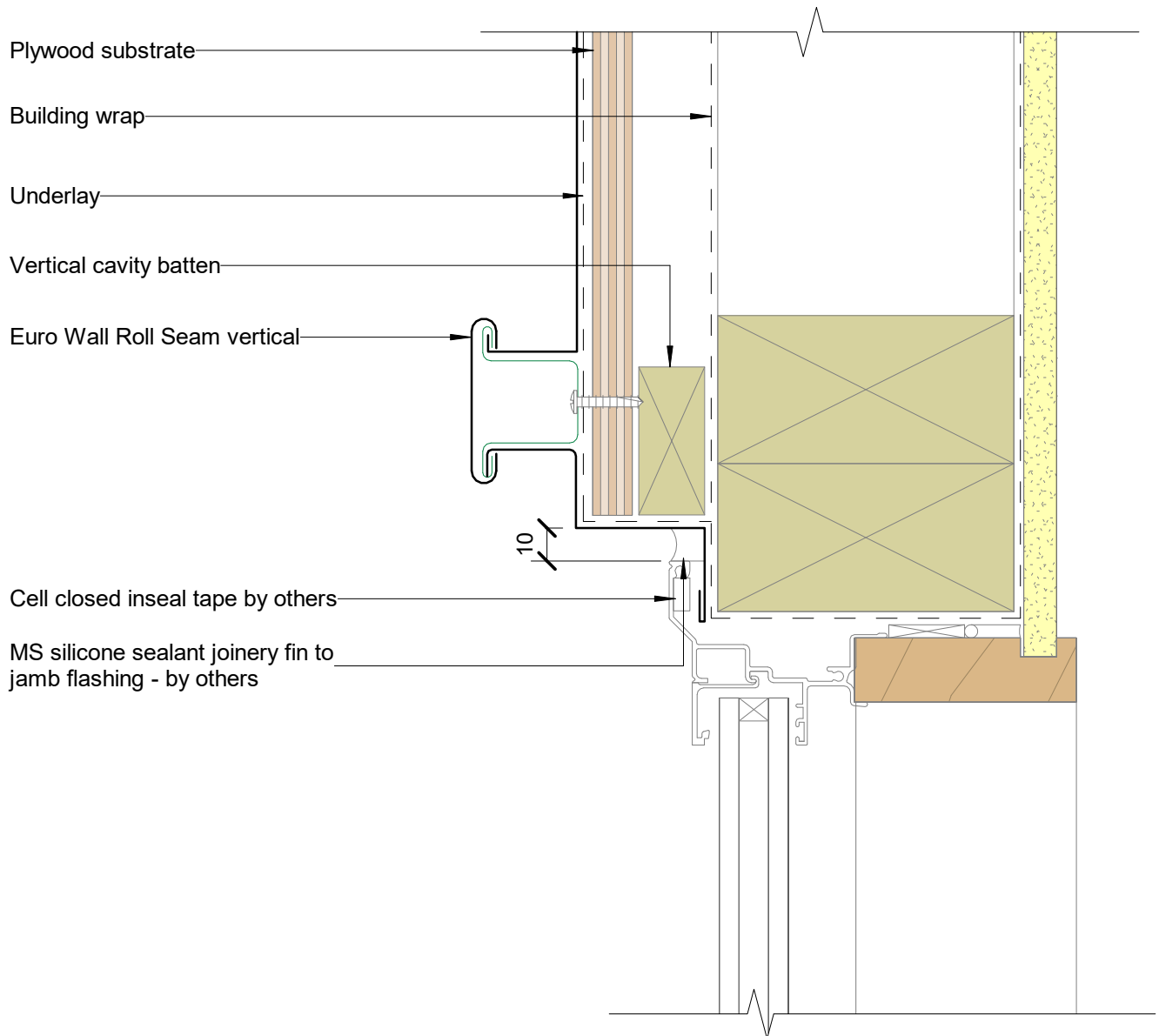
Euro Wall Roll Seam vertical

Scale 1:2



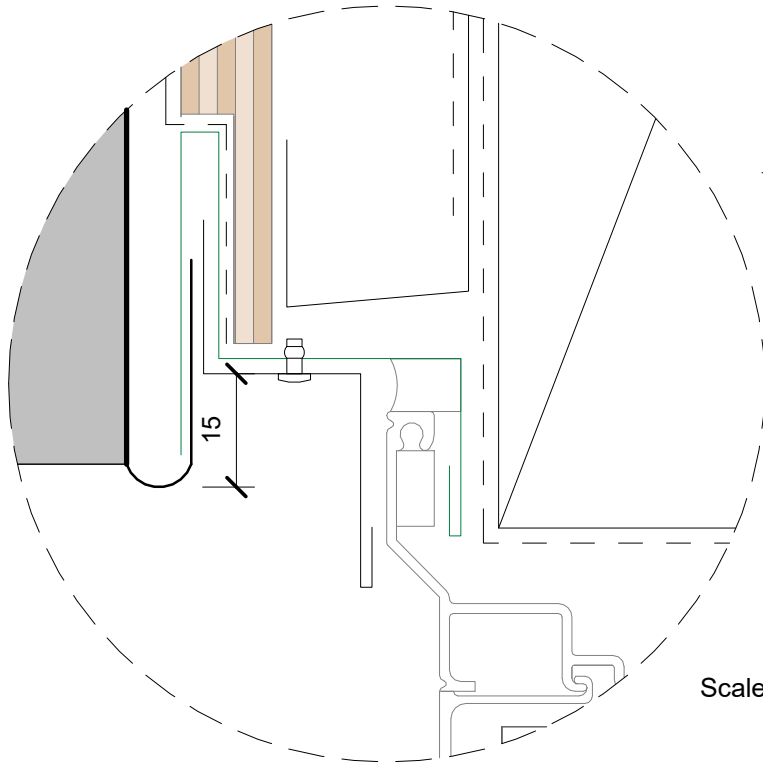
Scale 1:5



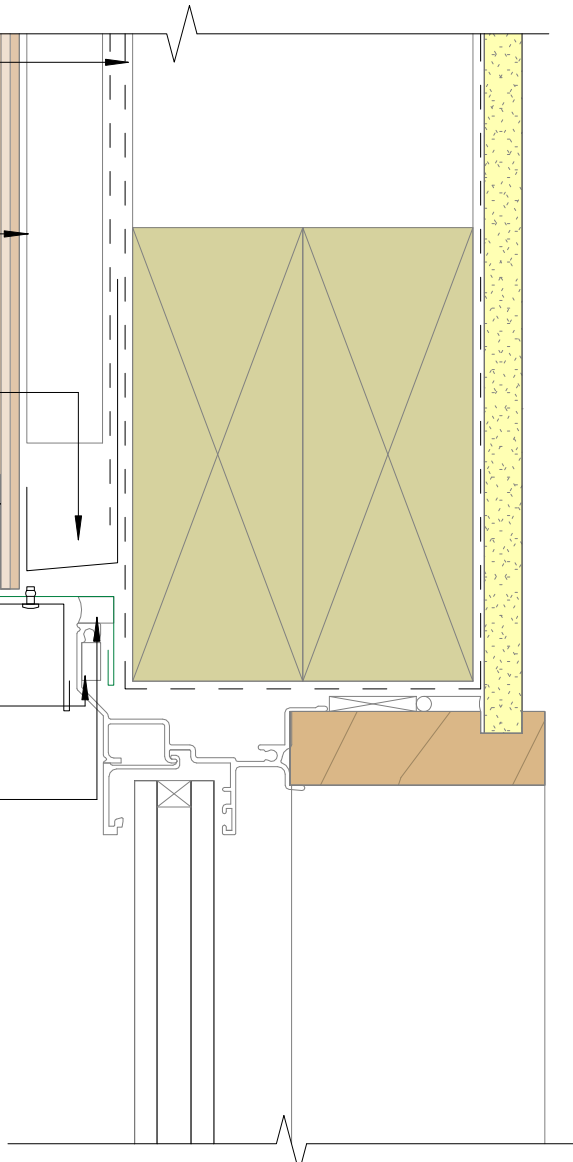


- Building wrap
- Underlay
- Euro Wall Roll Seam vertical
- Vertical cavity batten
- Plywood substrate
- Proprietary metal cavity closure by Metal Design Solutions, non punched fall to one side. 100mm into cavity each side of opening
- 50mm x 3mm rebate in ply
- Cell closed inseal tape by others
- 10mm gap between joinery and flashing, seal with MS silicone sealant - by others

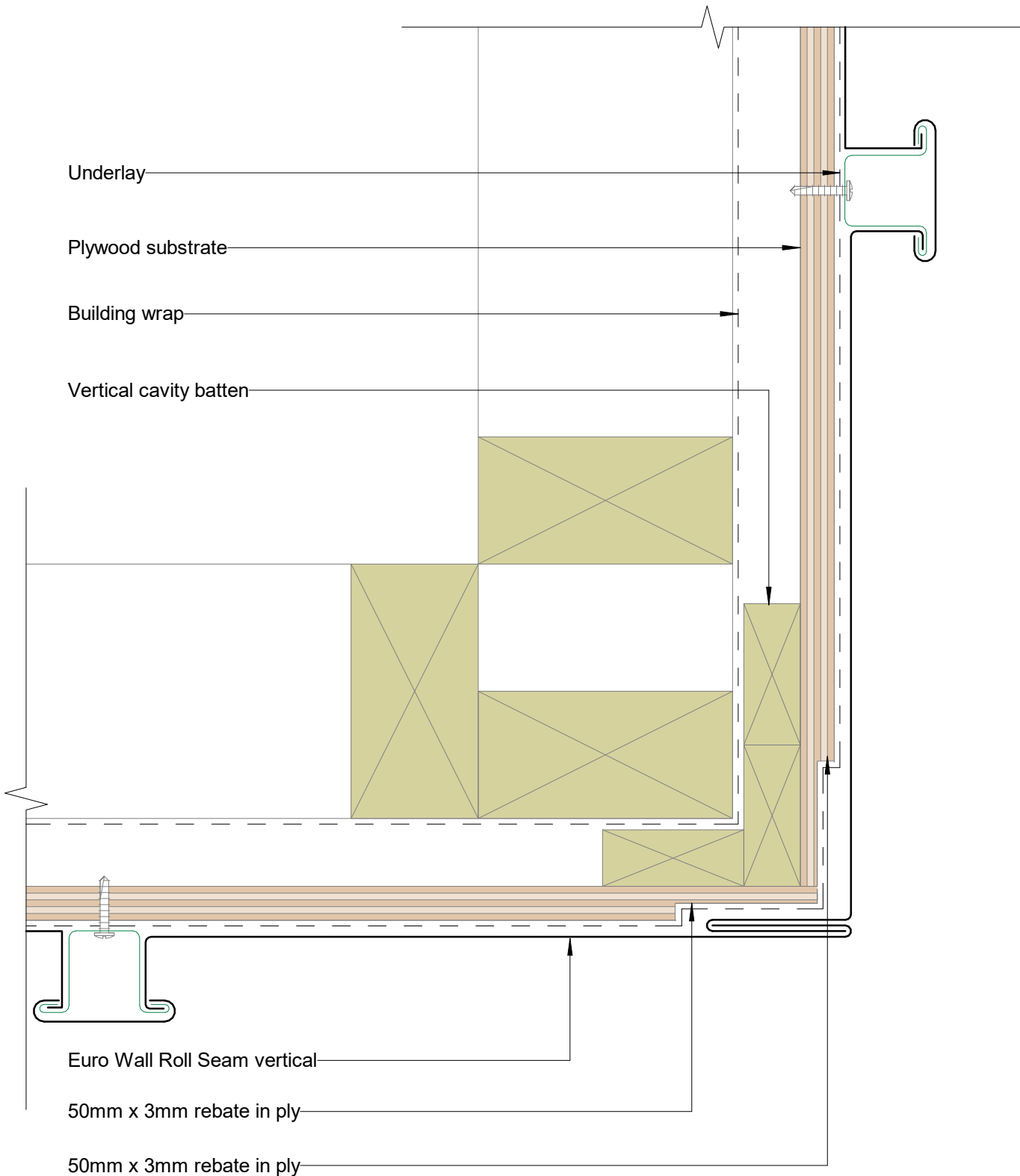
15 drip edge

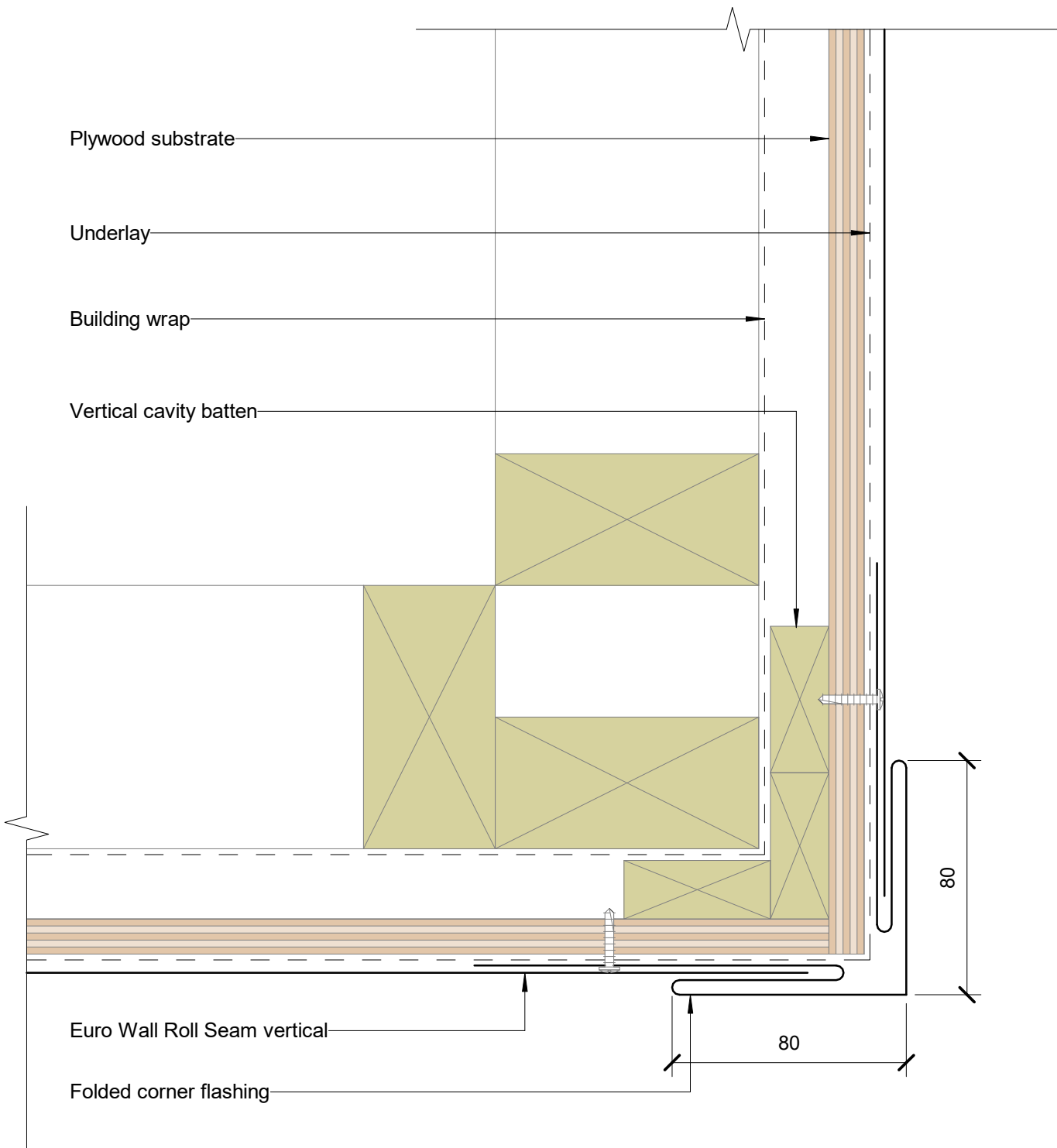


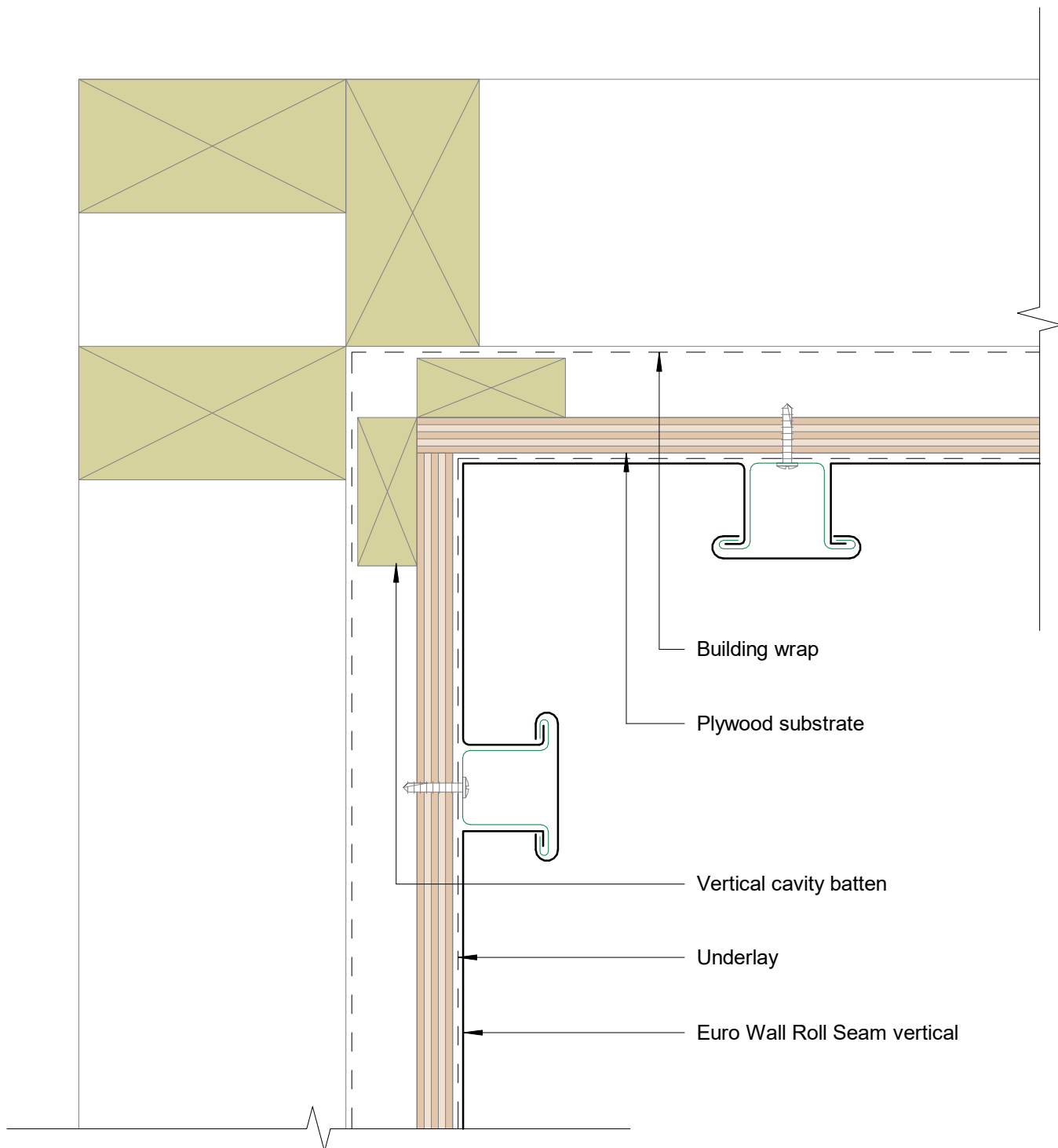
Scale 1:2

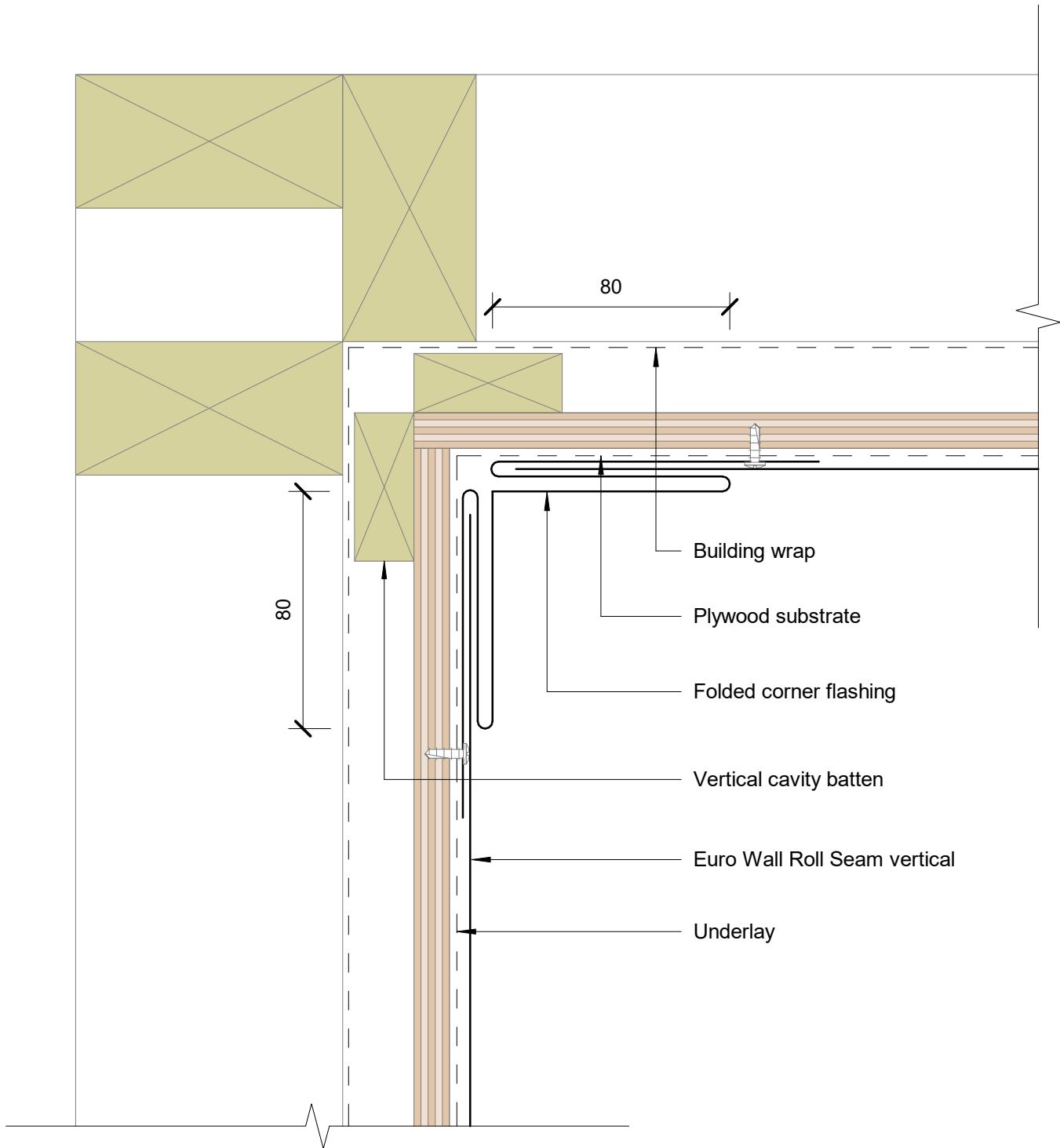


Scale 1:5

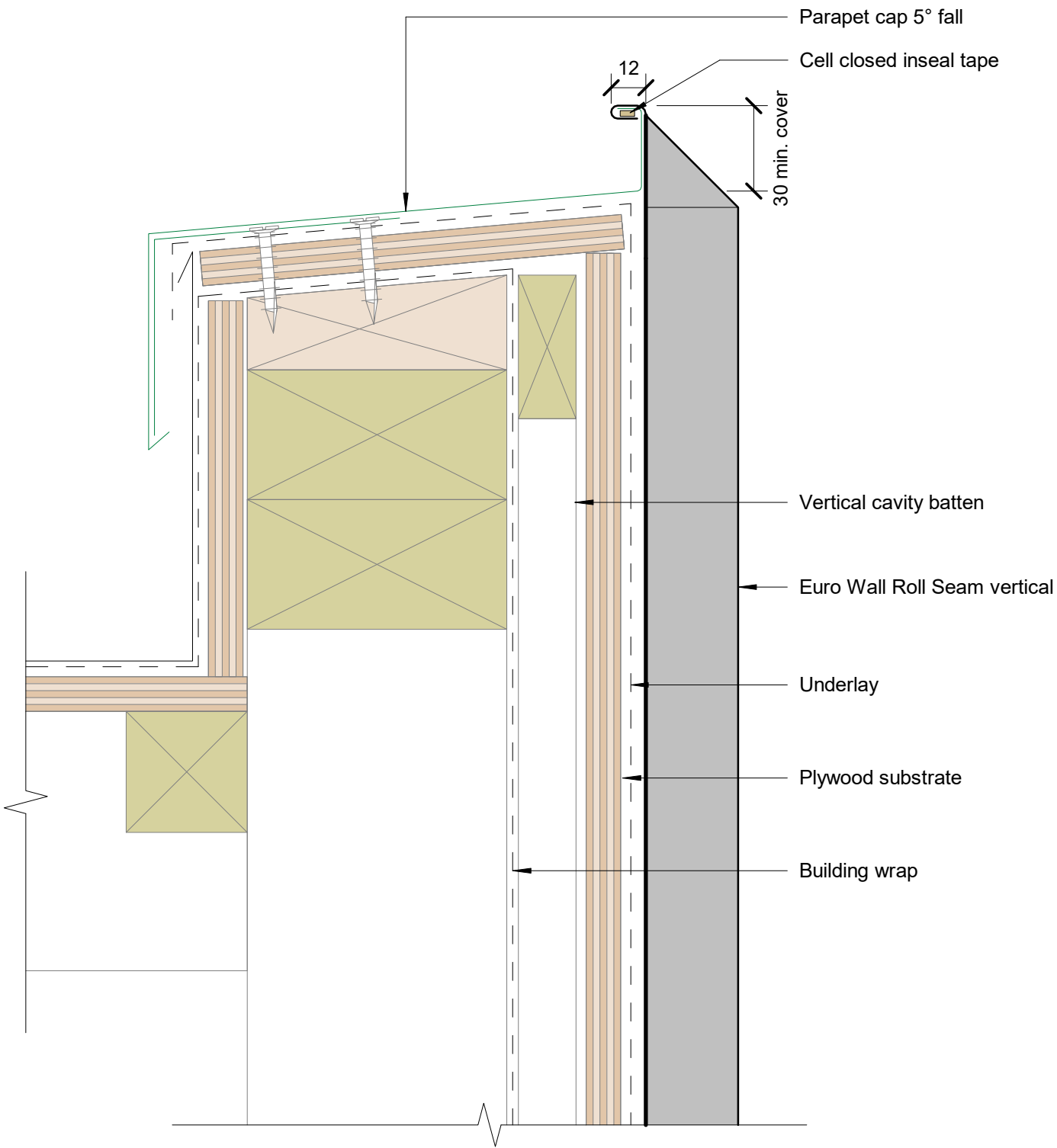


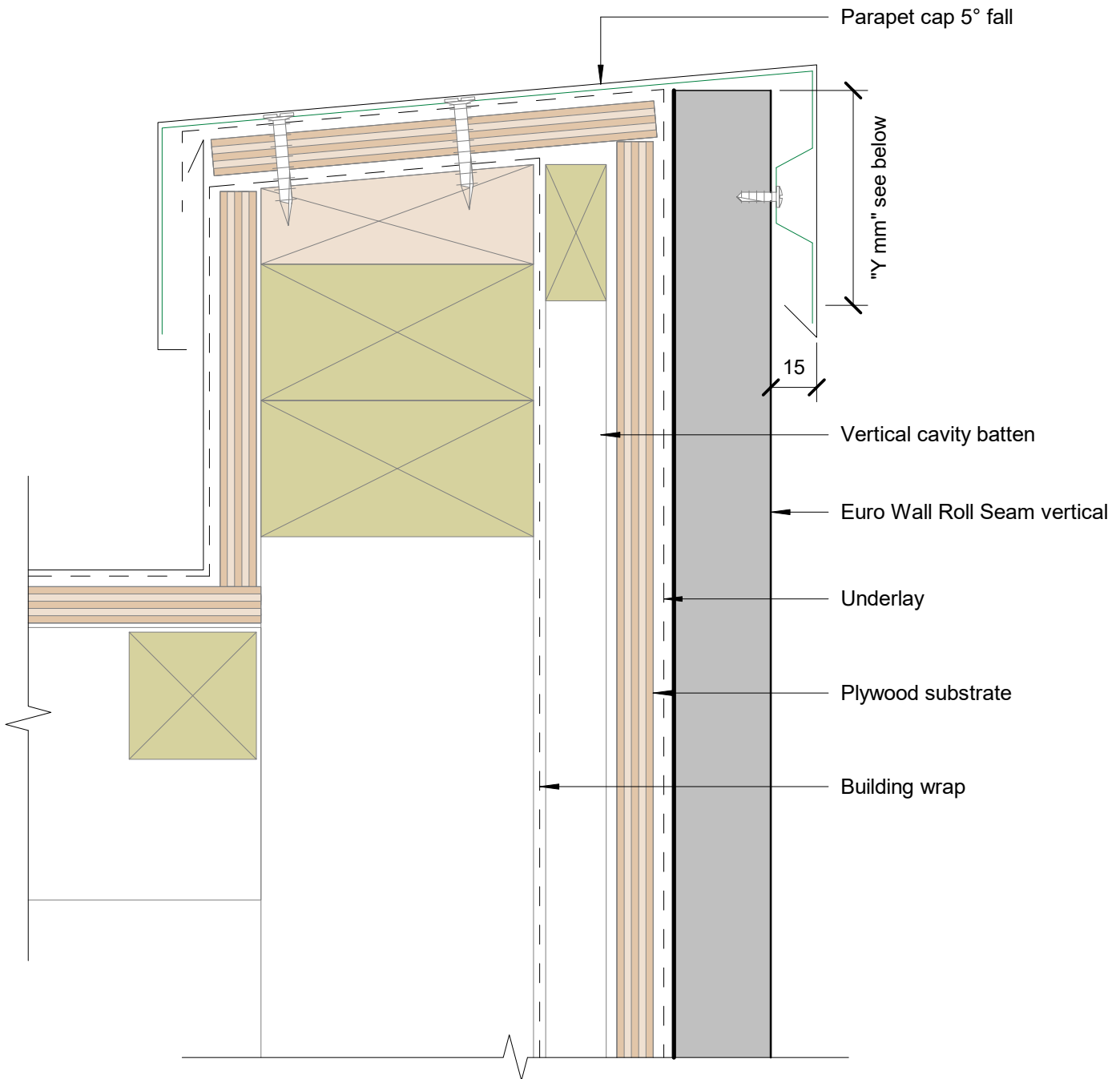












Parapet Typical (Y mm): excluding drip edge:

50mm in situation 1: Low, Medium and High wind zones

70mm in situation 2: Very High, Low, Medium and High wind zones

90mm in situation 3: Extra High wind zones

