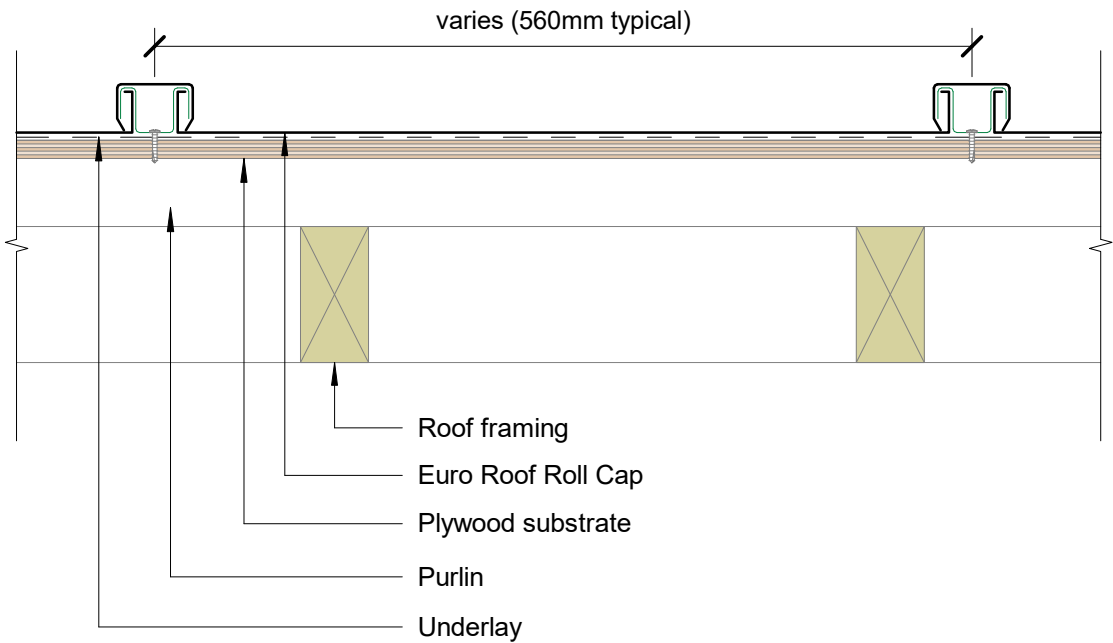
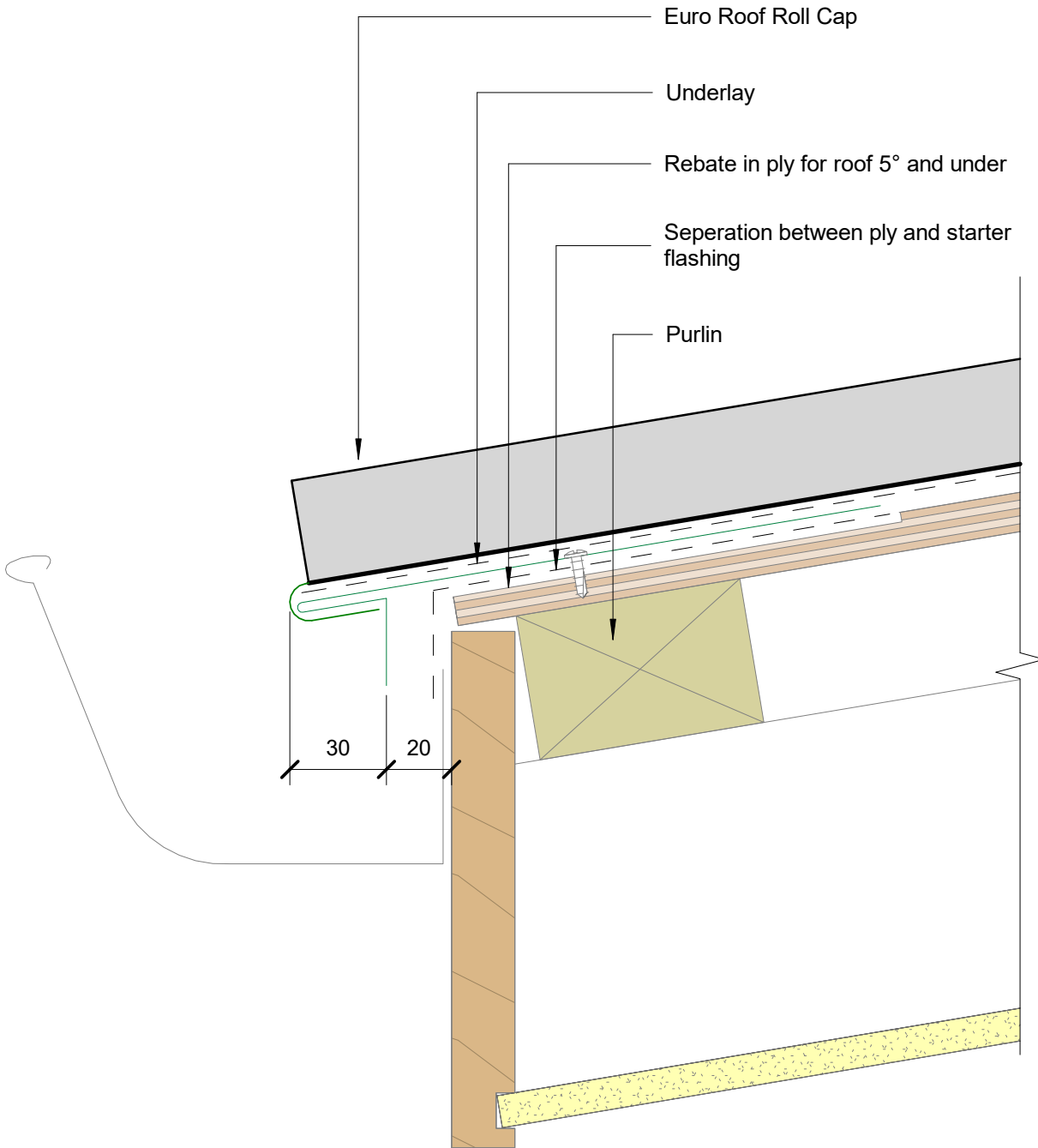


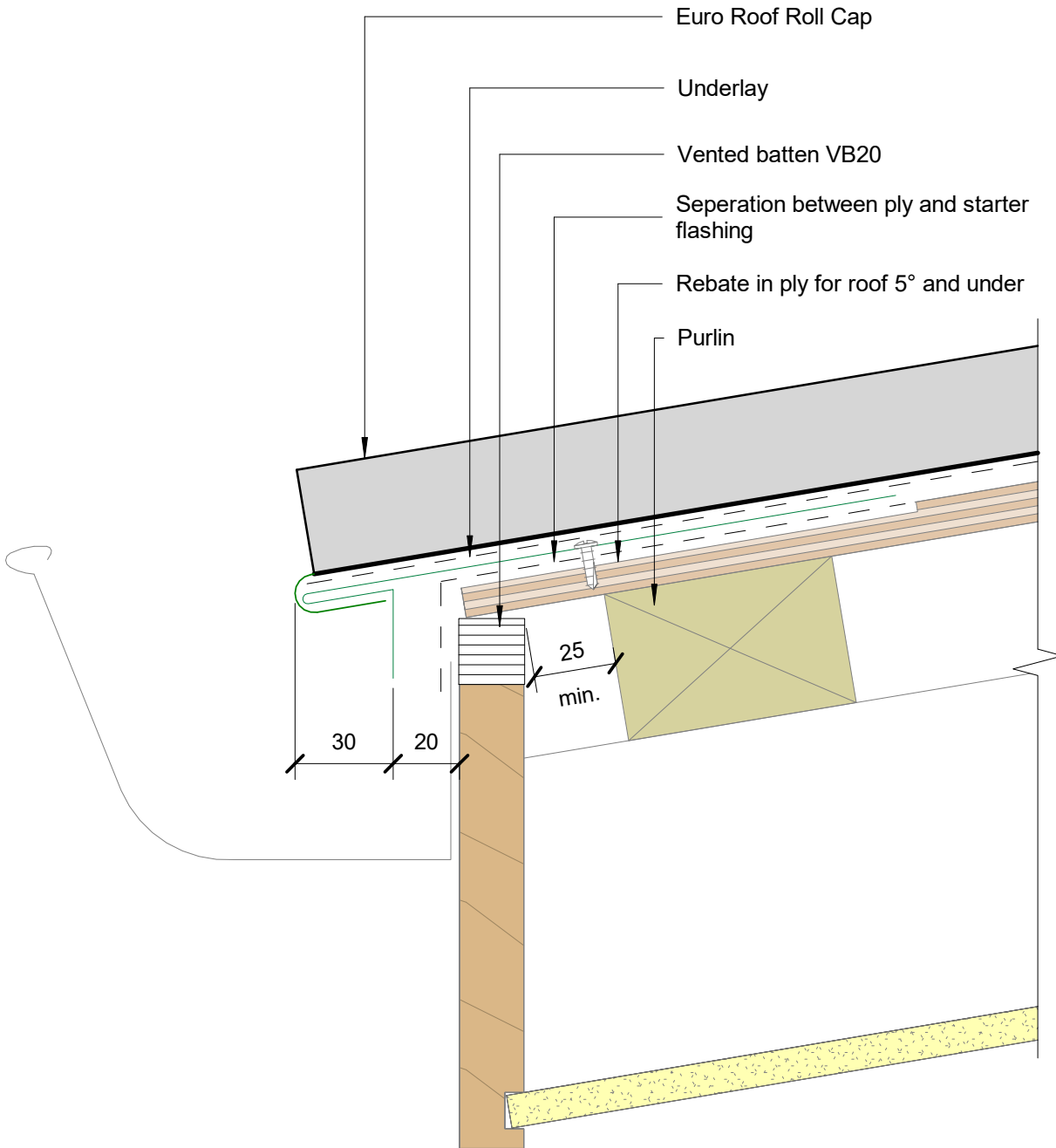
Euro Roof Roll Cap

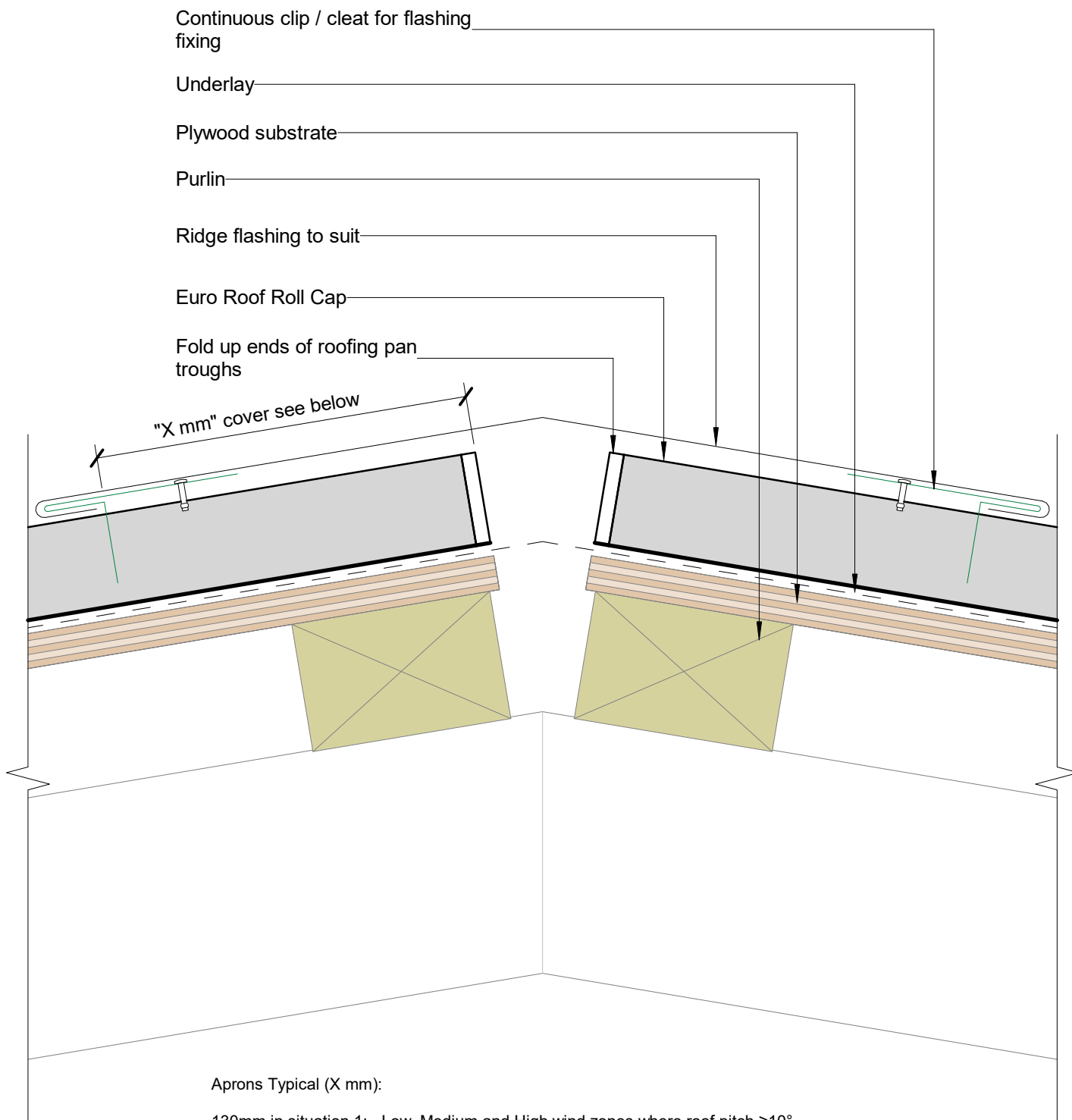
Scale 1:2



Scale 1:5

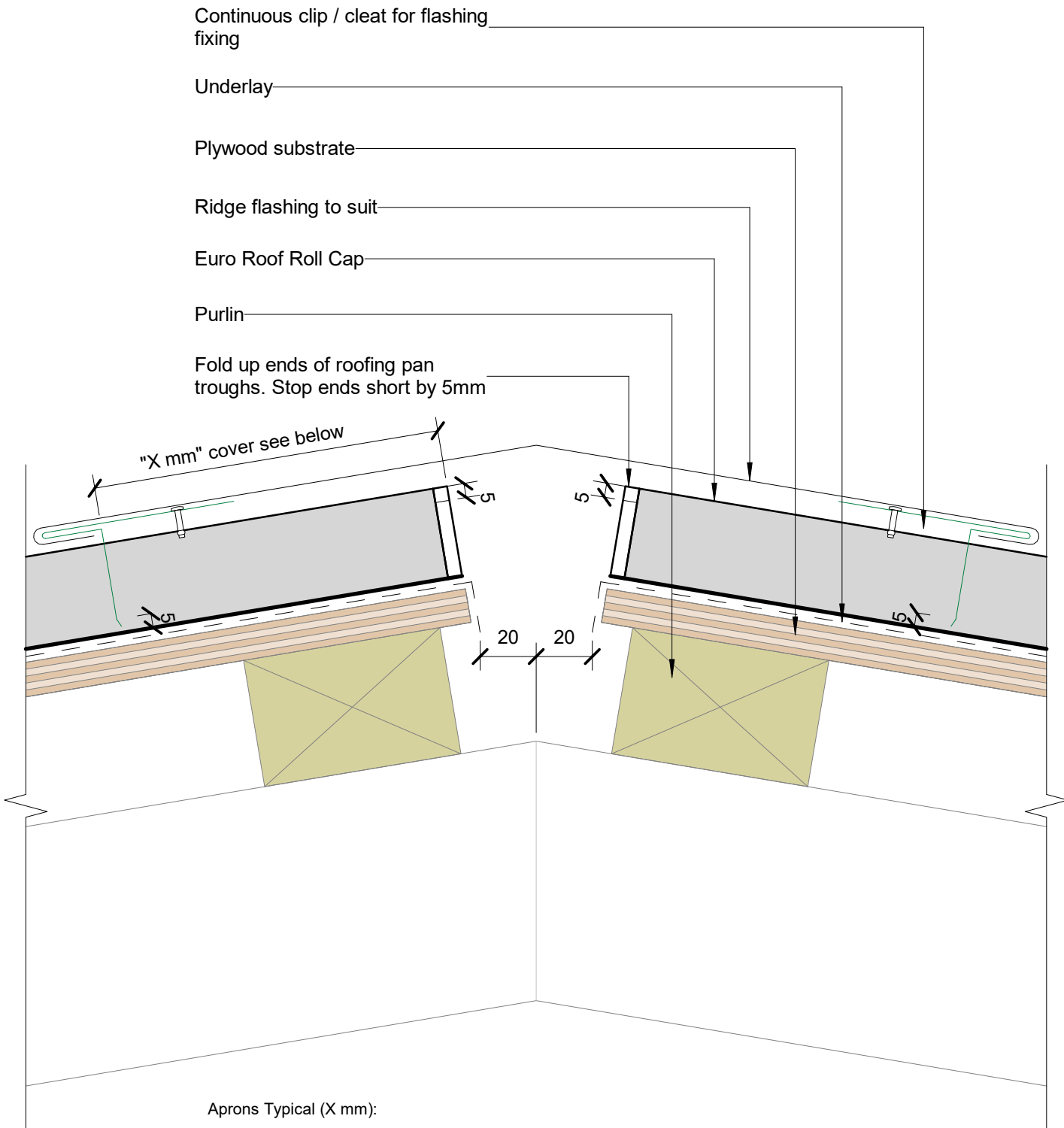






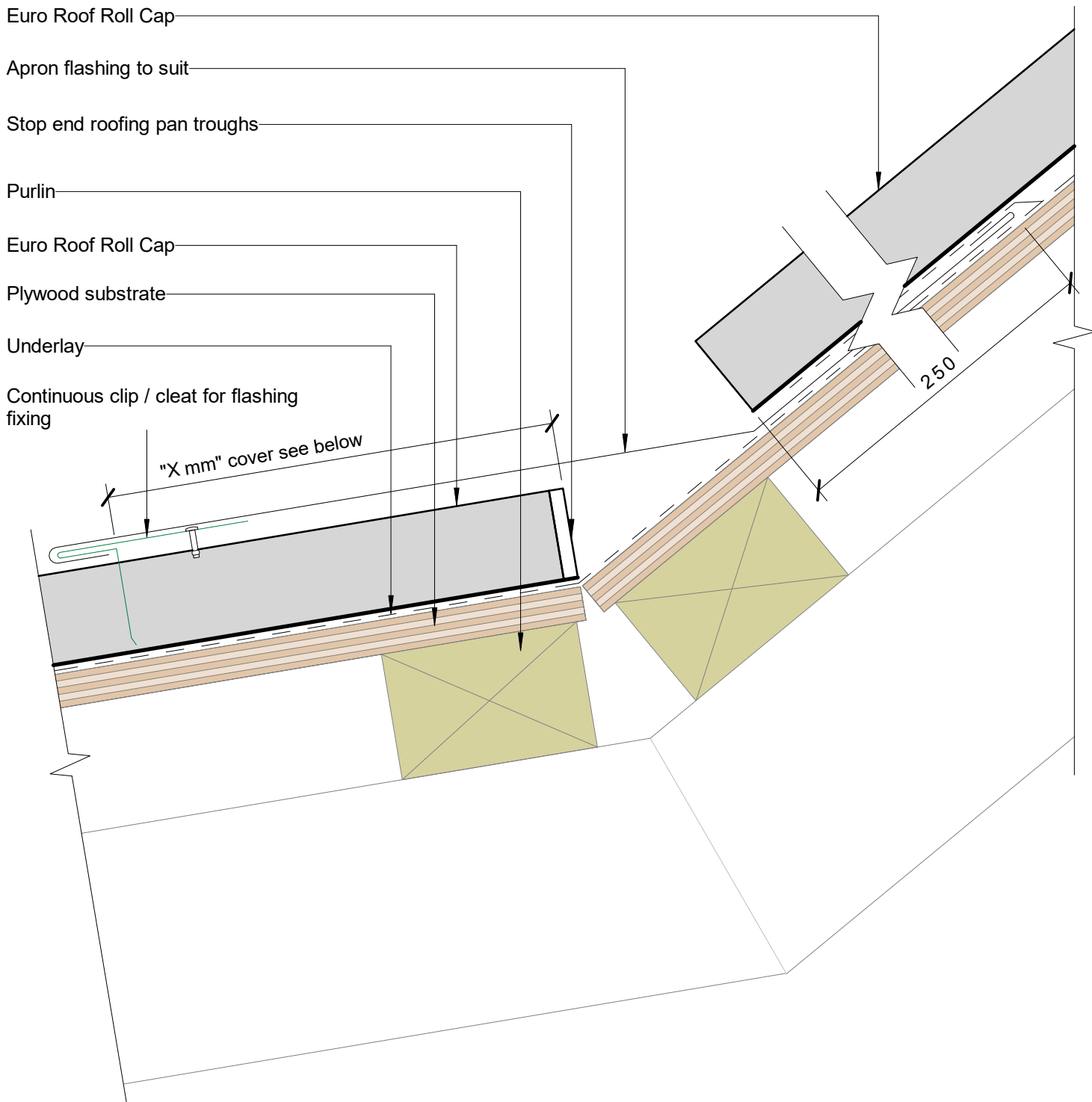
Aprons Typical (X mm):

- 130mm in situation 1: Low, Medium and High wind zones where roof pitch $\geq 10^\circ$
- 200mm in situation 2: All roof pitches in Very High wind zones
Low, Medium and High wind zones where roof pitch $\leq 10^\circ$
- 200mm in situation 3: All roof pitches in Extra High wind zones



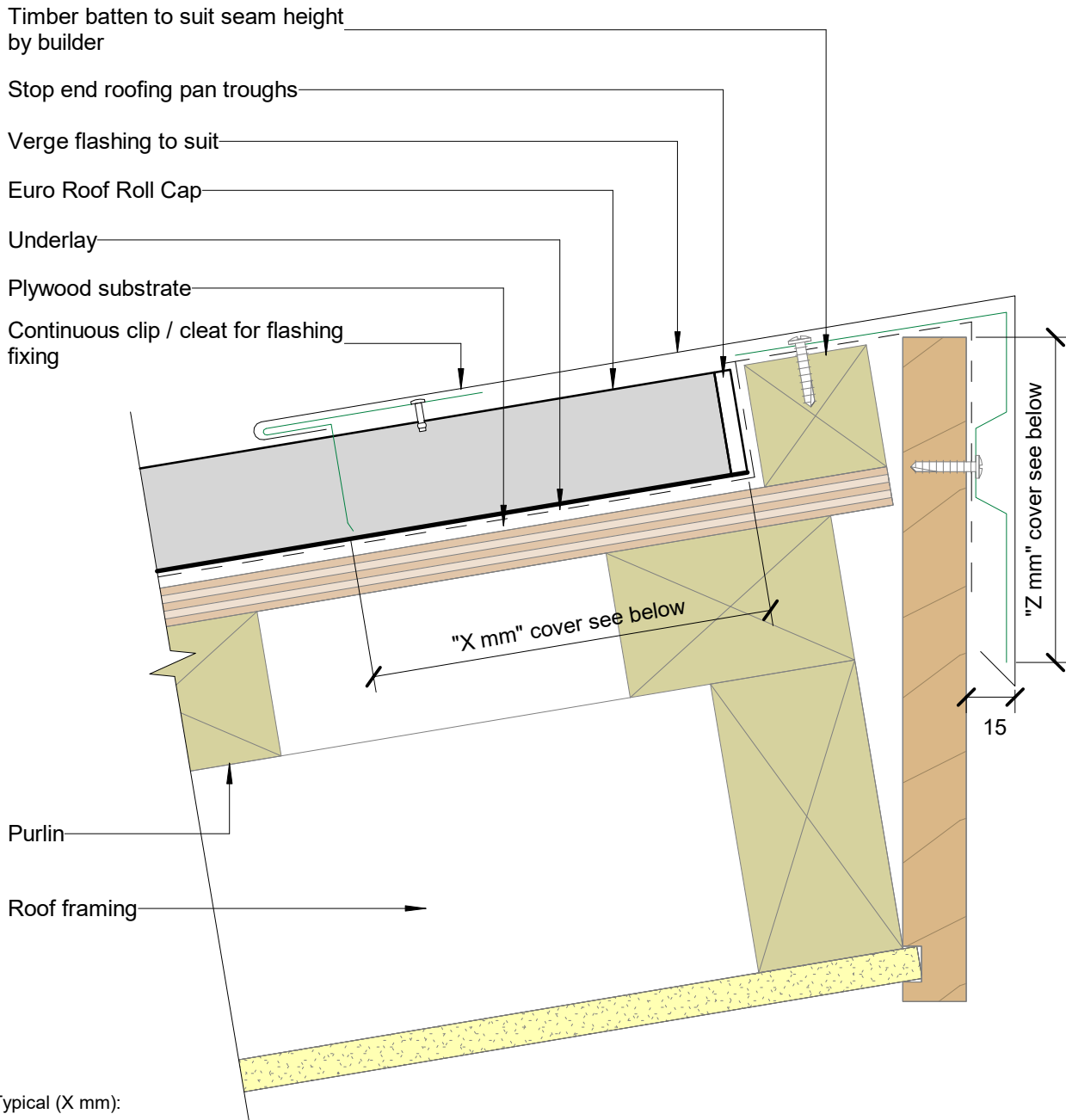
Aprons Typical (X mm):

- 130mm in situation 1: Low, Medium and High wind zones where roof pitch $\geq 10^\circ$
- 200mm in situation 2: All roof pitches in Very High wind zones
Low, Medium and High wind zones where roof pitch $\leq 10^\circ$
- 200mm in situation 3: All roof pitches in Extra High wind zones



Aprons Typical (X mm):

- 130mm in situation 1: Low, Medium and High wind zones where roof pitch $\geq 10^\circ$
- 200mm in situation 2: All roof pitches in Very High wind zones
Low, Medium and High wind zones where roof pitch $\leq 10^\circ$
- 200mm in situation 3: All roof pitches in Extra High wind zones

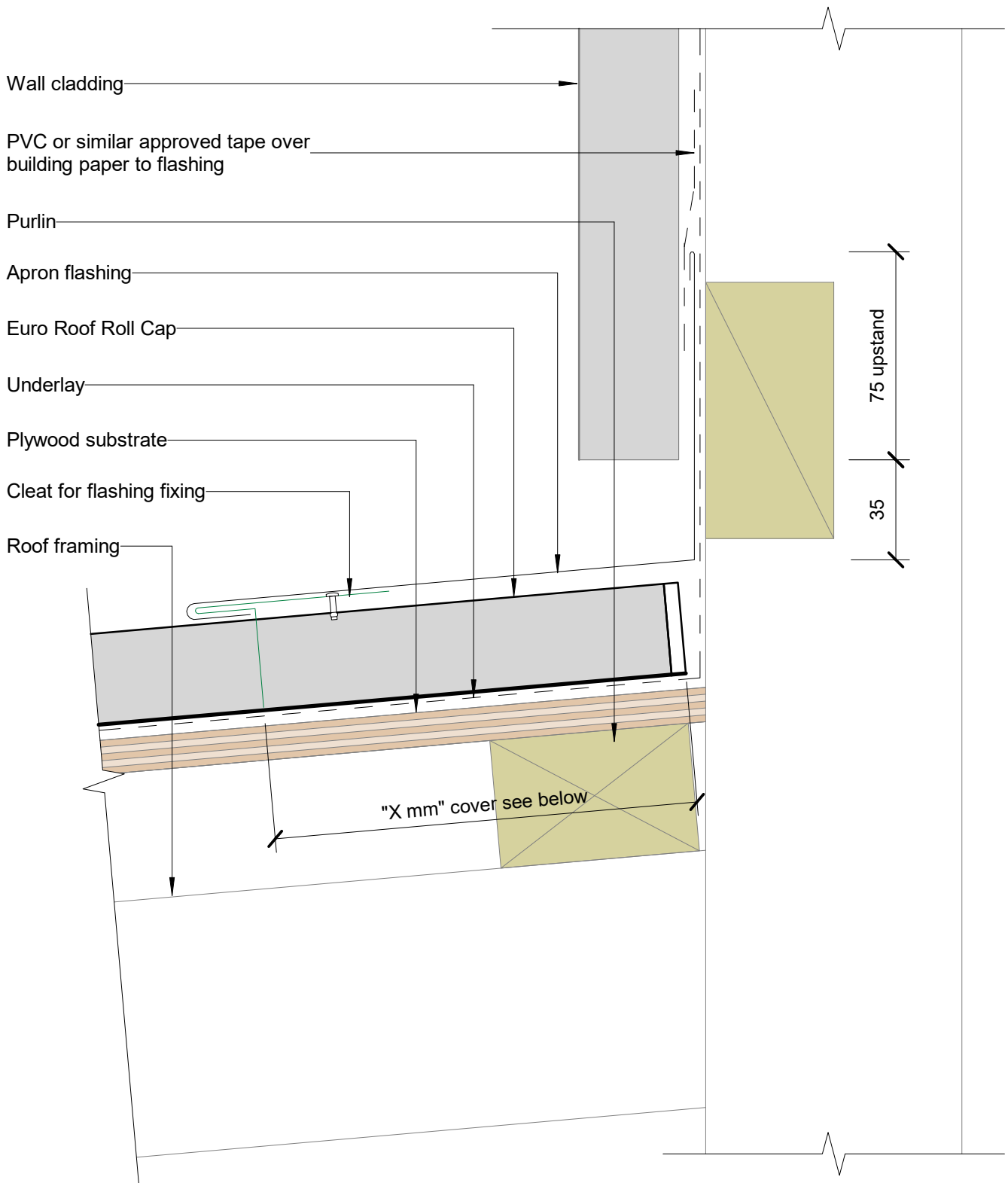


Aprons Typical (X mm):

- 130mm in situation 1: Low, Medium and High wind zones where roof pitch $\geq 10^\circ$
- 200mm in situation 2: All roof pitches in Very High wind zones
Low, Medium and High wind zones where roof pitch $\leq 10^\circ$
- 200mm in situation 3: All roof pitches in Extra High wind zones

Barge Typical (Z mm): excluding drip edge:

- 50mm in situation 1: Low, Medium and High wind zones where roof pitch $\geq 10^\circ$
- 70mm in situation 2: All roof pitches in Very High wind zones
Low, Medium and High wind zones where roof pitch $\leq 10^\circ$
- 90mm in situation 3: All roof pitches in Extra High wind zones

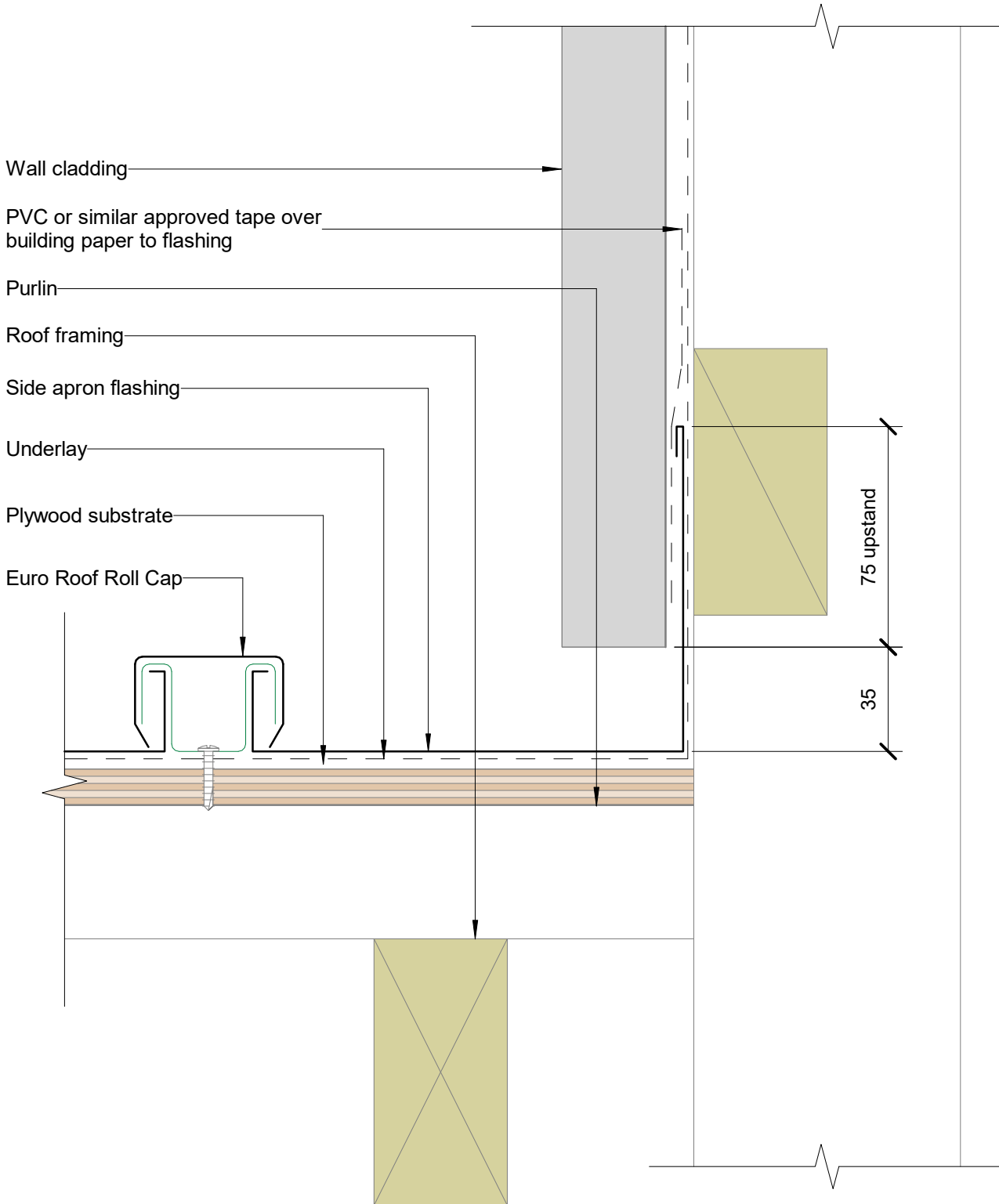


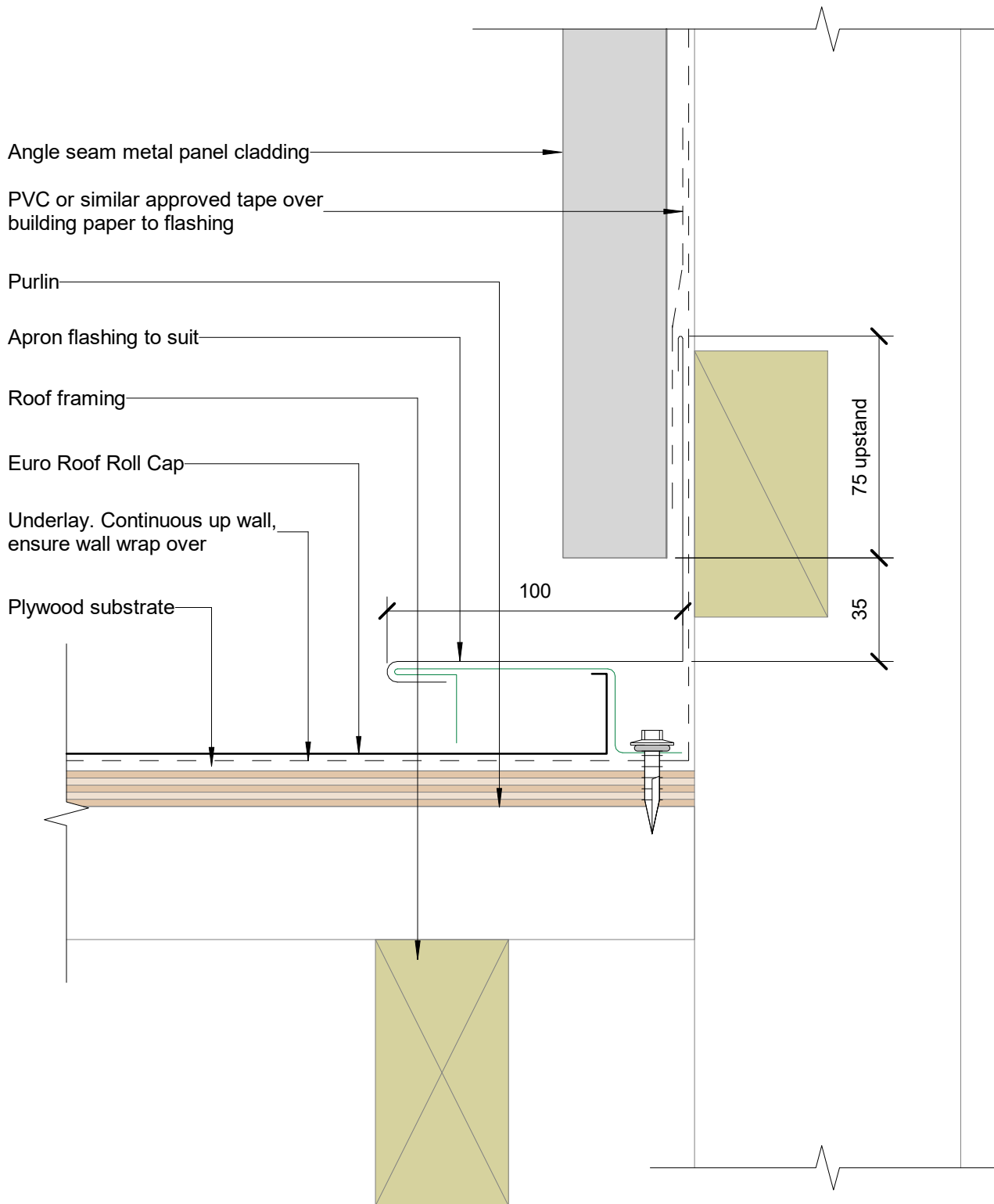
Aprons Typical (X mm):

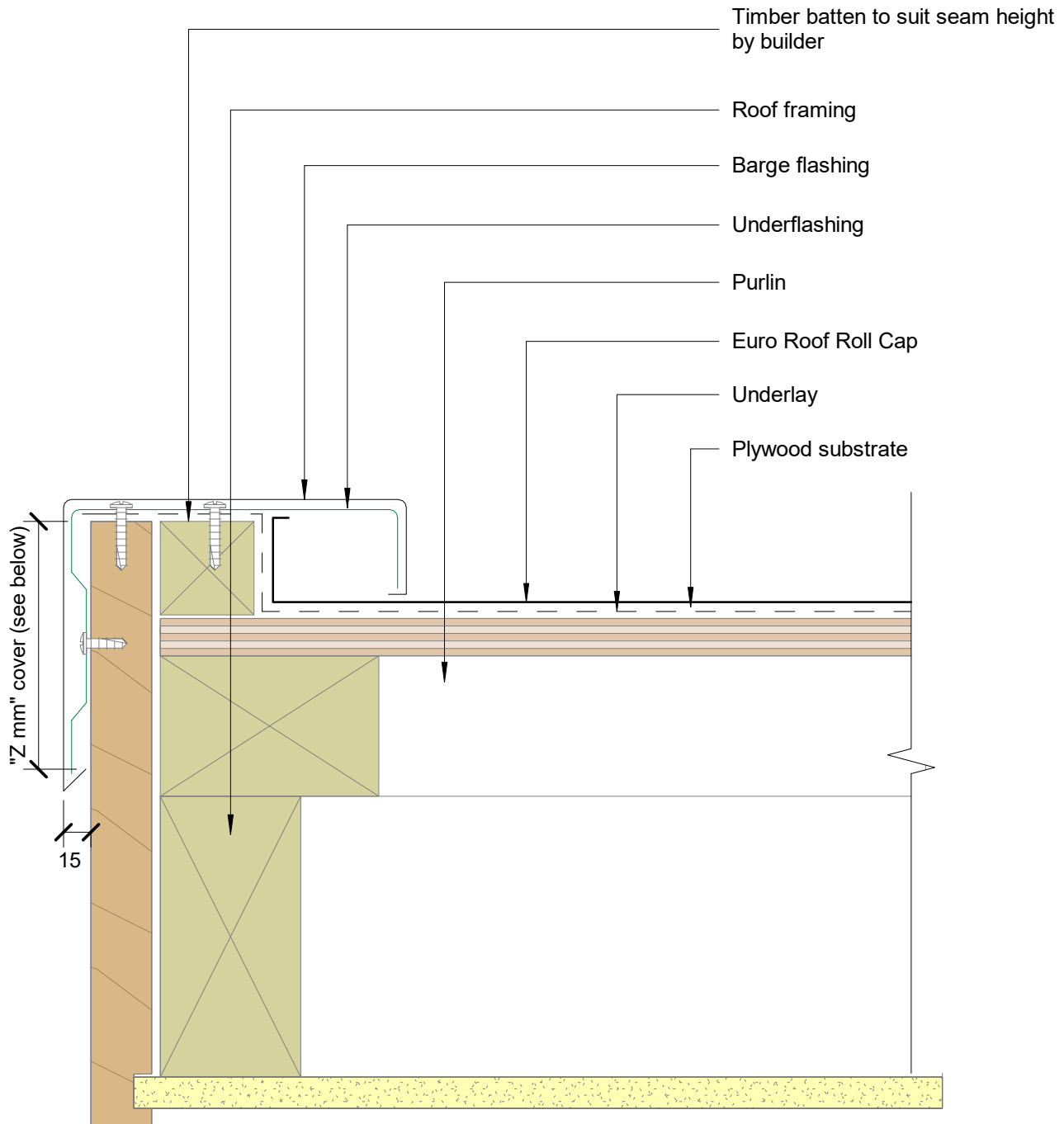
130mm in situation 1: Low, Medium and High wind zones where roof pitch $\geq 10^\circ$

200mm in situation 2: All roof pitches in Very High wind zones
Low, Medium and High wind zones where roof pitch $\leq 10^\circ$

200mm in situation 3: All roof pitches in Extra High wind zones

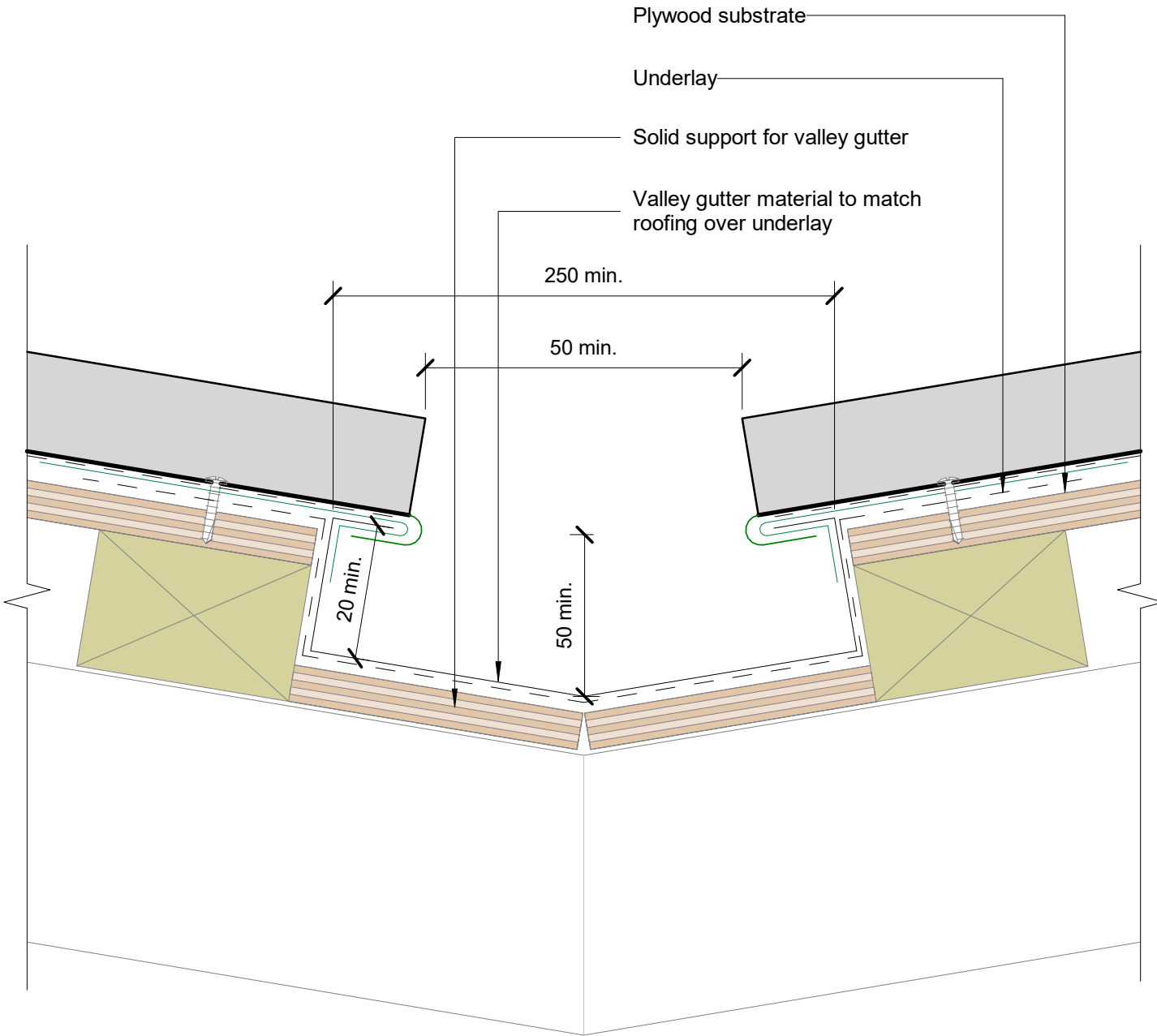


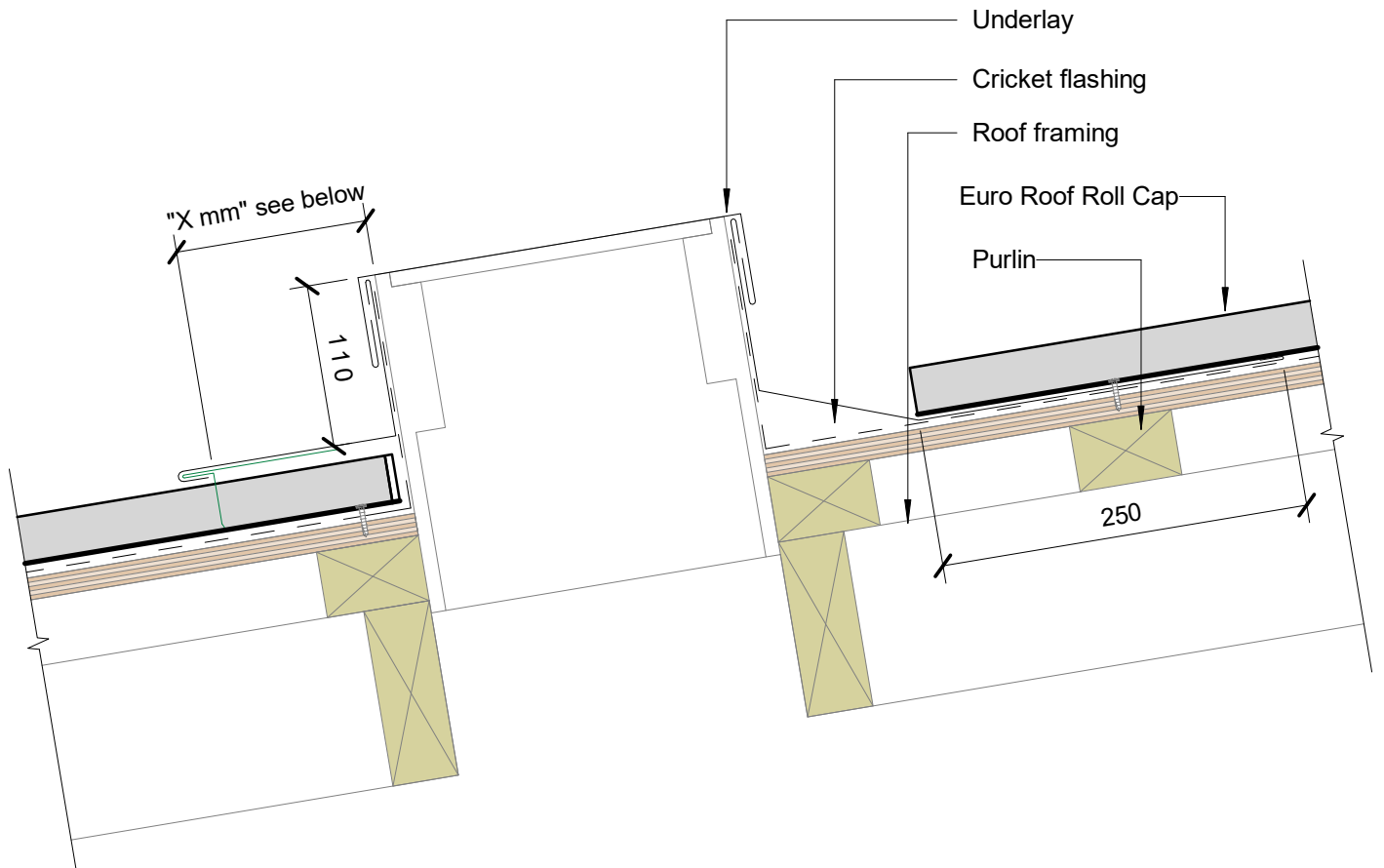




Barge Typical (Z mm): excluding drip edge:

- 50mm in situation 1: Low, Medium and High wind zones where roof pitch $\geq 10^\circ$
- 70mm in situation 2: All roof pitches in Very High wind zones
Low, Medium and High wind zones where roof pitch $\leq 10^\circ$
- 90mm in situation 3: All roof pitches in Extra High wind zones





Aprons Typical (X mm):

- 130mm in situation 1: Low, Medium and High wind zones where roof pitch $\geq 10^\circ$
- 200mm in situation 2: All roof pitches in Very High wind zones
Low, Medium and High wind zones where roof pitch $\leq 10^\circ$
- 200mm in situation 3: All roof pitches in Extra High wind zones

