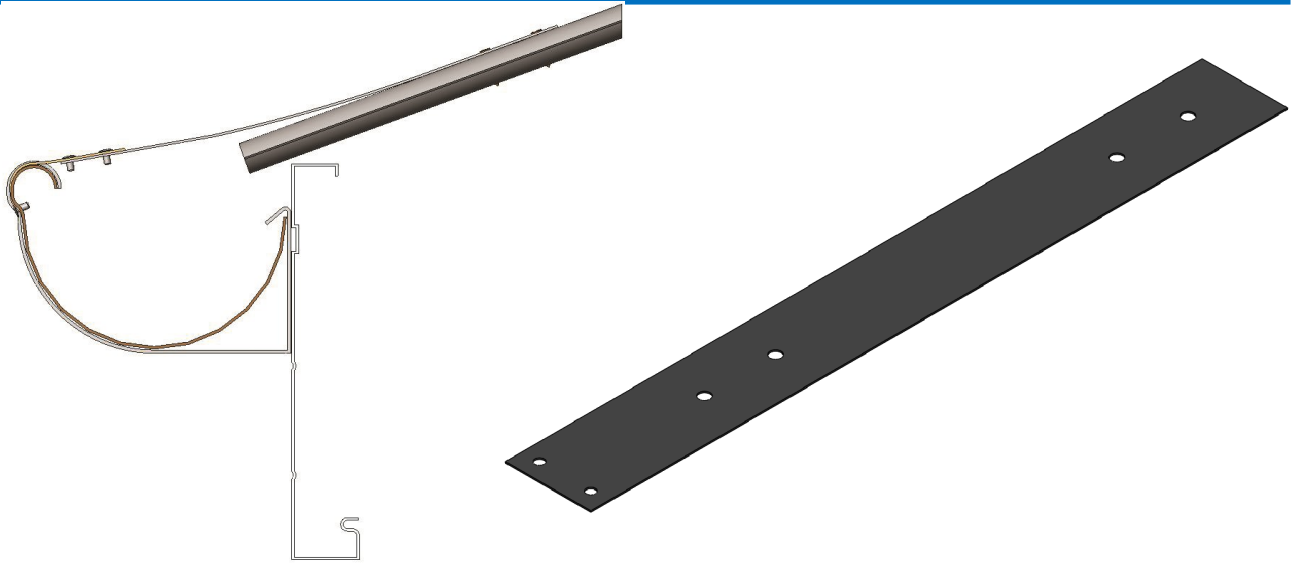




SNOWSTRAPS



| PRODUCT SPECIFICATIONS | | SNOW LOADING ZONES | Max altitude @ 1.5 kPa |
|--|---|--|------------------------|
| MagnaFlow™ Pre-painted Steel | 0.55mm G300 with a minimum of 200gsm alloy/zinc coating. | Zone 1– Gisborne/South of Taupo/ South of New Plymouth | 850 |
| Pure Copper Copper 3/4 Hard | 0.55mm Grade C12200 | Zone 2–Buller & Westland | 850 |
| Tip Material (when attaching to copper) | 1.60mm Brass-hard | Zone 3–Nelson/Marlborough | 850 |
| Recommended Maximum spacing | Centred between spouting brackets or at a maximum of 600mm | Zone 4–Canterbury/Central Otago / Otago, North of Waitati | 350 |
| Recommended Fixings | Minimum Class 4 screw fasteners compatible with substrate and bracket material. | Zone 5–Southland/ Otago, south of Waitati | 400 |

| | |
|------------------------|--|
| Scope of use | Continuous Group snow solutions are intended to provide additional fixings to assist gutters from collapse in light to medium snow falls. Rare snow falls or “Marine” snow falls may exceed the maximum 2 KPa limit detailed in NZS 3604 and may require specific design. |
| NZBC Compliance | New Zealand is divided (in NZS3604) into six zones where the maximum snow load is 2 kPa. Any areas above specific altitudes in these areas require specific design. Projections such as gutters, flashings and chimneys need additional fixings and detailing to resist loads from sliding snow. Continuous Group Snow straps are solely an additional fixing as described in MRM –COP section 3.8 |
| Durability | All copper and aluminium products listed above are fit for purpose in environment zone B, C, D and E* Pre-painted steel products are fit for purpose in environment Zone B and C* They may be used in environment zone D subject to a pre-approval warranty application based on site address* *In all cases, areas with high wind &/or salt &/or thermal/industrial atmospheric conditions may require specific engineering design (S.E.D) |
| Maintenance | Continuous Group snow solutions require regular maintenance to ensure the useful life of the products. Minimum maintenance interval of every 6 months or as often as needed to avoid build up of contaminants (dirt, salt, pollen etc.) on the product surface. Simply spray and rinse with water and/or if necessary scrub with a soft nylon brush. More information and specific maintenance products are available on our website www.continuous.co.nz/care-and-maintenance |
| Warranty | MagnaFlow™ : Environment zone B & C–10 year paint warranty ; 12 year perforation warranty. MagnaFlow™ : Environment zone D–10 year paint warranty ; 10 year perforation warranty. Pure Copper & EuraMax : 20 year material and perforation warranty. Full details and conditions of our comprehensive warranty can be found at www.continuous.co.nz/warranties |