

CEMINTEL[®]

CEMENT INTELLIGENCE

AIR BARRIER RIGID AIR BARRIER

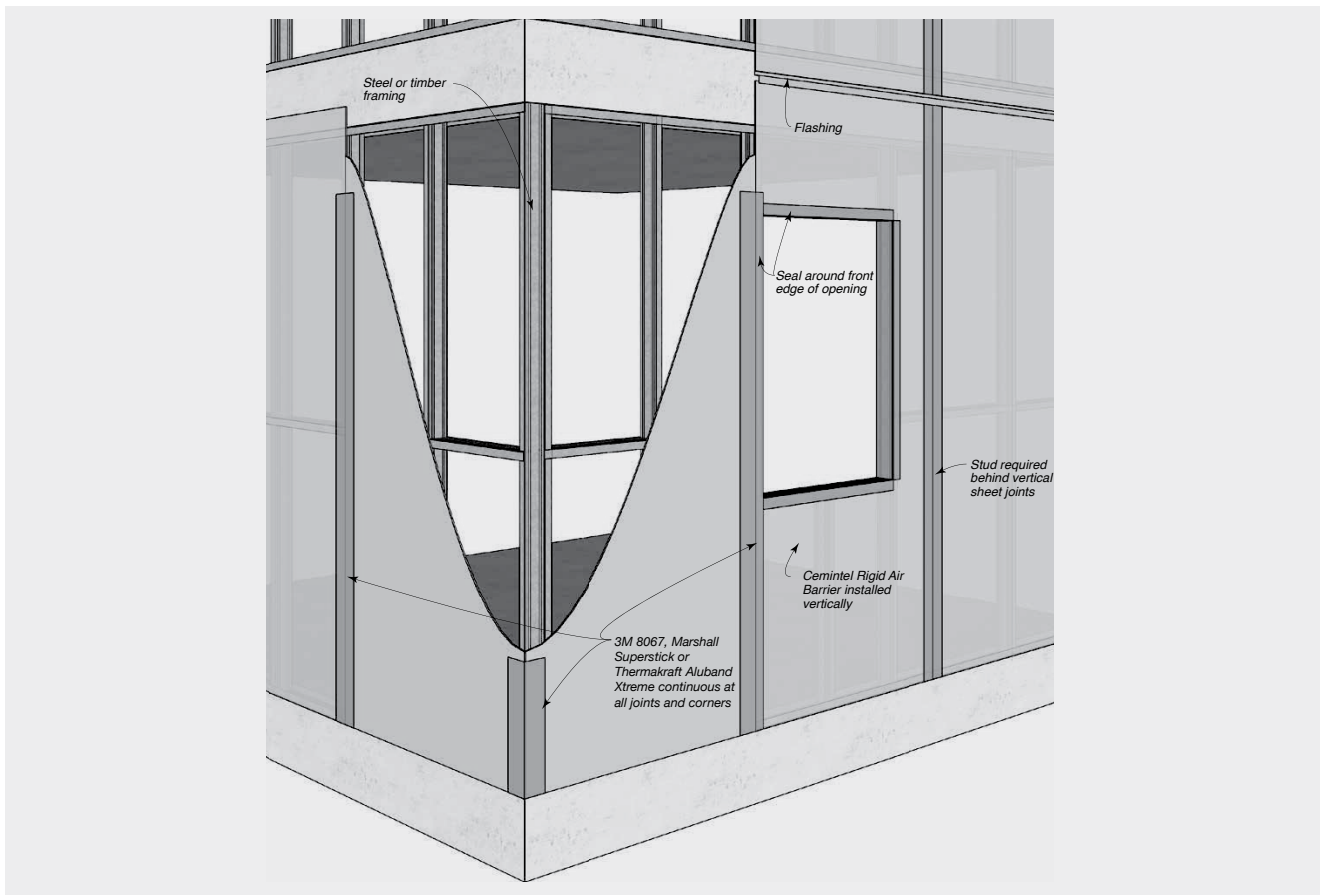
Cemintel Rigid Air Barrier is a 6mm, square edged fibre cement panel that is sealed on the face and edges using CeminSeal[®] water block technology.

Designed for use as a rigid wall underlay behind wall cladding systems, Cemintel Rigid Air Barrier can also be used to provide bracing for timber framed buildings within the scope of NZS3604.

Cemintel Rigid Air Barrier is designed for use with pressure equalised cladding systems to produce effective weather-resistant facades.



System Overview



Cemintel Code	Thickness (mm)	Width (mm)	Length (mm)	Mass (Nominal)	Panels per pack
170076	6	1200	3000	9.4kg/m ²	30
452432	6	1200	2450	9.4kg/m ²	30

Note: Rigid Air Barrier™ can be made to order. Minimum order quantities and lead times apply. Refer to Cemintel[®] for more information.

CEMINTEL®




CEMENT INTELLIGENCE

AIR BARRIER RIGID AIR BARRIER – COMPONENTS & ACCESSORIES

Cemintel Rigid Air Barrier

Product	Width (mm)	Length (mm)	Thickness (mm)
Cemintel Rigid Air Barrier	1200	3000	6
Cemintel Rigid Air Barrier	1200	2450	6

Product/Accessories/Tools for Installing Cemintel Rigid Air Barrier

Other Accessories	Description	Size	Quantity
NAILS (FOR TIMBER)			
	Nails for fixing Cemintel Rigid Air Barrier to timber framing 40 x 2.8 flat head hot dip galvanised or stainless steel ring shank	2.8 x 40mm	Supplied by others
SCREWS (FOR STEEL)			
	Screws for fixing Cemintel Rigid Air Barrier to steel framing 40 x 10g button head	10g x 40mm	Supplied by others
	3M 8067, Marshall Superstick or Thermakraft Aluband Xtreme - Used to seal vertical and horizontal joints around openings, corners and flashings.	75mm wide (For sheet joints) 150mm wide (For window and door)	Supplied by others
	Flashings and Cappings – flashings are to be designed and installed in accordance with NZBC E2.		Supplied by others

