



TEL: 09 579-8895
FAX: 09 579-2933
EMAIL: sales@nzfiredoors.co.nz

NZ Fire Doors Ltd,
89 Gavin Street, Ellerslie,
PO Box 12709, Penrose 1642,
Auckland, New Zealand.
www.nzfiredoors.co.nz

Data sheet

I-30-H: Interior 30 minute FRR hung door, single or pair

Our most popular 30 minute FRR interior fire, smoke and acoustic door set, the I-30-H is available in singles or pairs. The door leaf is a solid composite timber core faced with an integral MDF layer (S-CORE). The standard door set is supplied sealer coated on both faces, as well as top and bottom, or you can specify a facing and/or kickplate.

- Leaf sizes up to 2030 high x 1200 wide or 2700 high x 910 wide per leaf
- Thickness 44 mm
- Weight 19.8 kg /m²
- Acoustic singles and doubles up to STC 33

- Leaf sizes up to 2350 high x 1200 wide or 2700 high x 1200 wide per leaf
- Thickness 55 mm
- Weight 28.2 kg /m²
- Acoustic singles and doubles up to STC 34

FACING OPTIONS

- Paint quality factory sealed
- Timber veneer full height
- High pressure laminate full height
- Vinyl to 1000 mm
- 1 mm stainless steel kickplate to 1000 mm – both sides
- "U" Groove (5mm w x 2.5mm d) and decorative options available

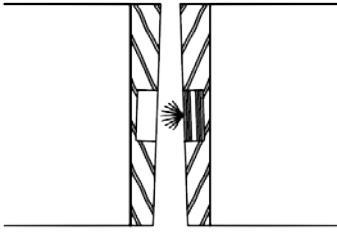
LEAF EDGE DETAILS

- 7 mm pine clashing to hinge edge/s
- 7 mm pine clashing to leading edge (Flush pairs & Singles)
- 18 mm pine clashing to leading edge of rebated pairs
- Bullnose (Ali)

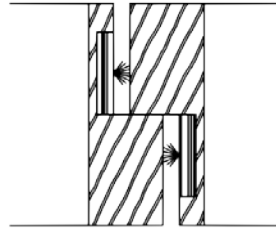
PAIR MEETING STYLES

Timber (the standard option)

Flush

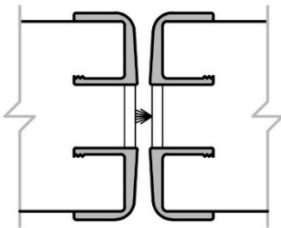


Rebated

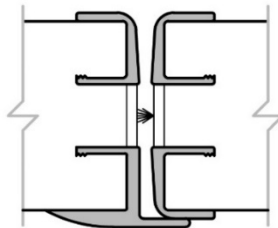


Aluminium (surcharge applies)

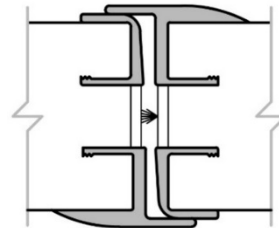
Bullnose C/C



Bullnose C/J



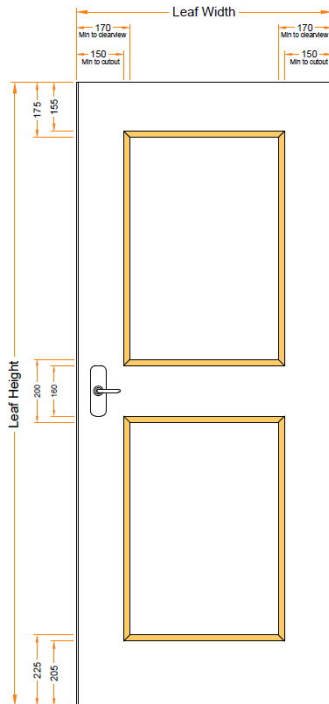
Bullnose J/J



GLAZING OPTIONS

Pyro 15 mm fire glass is used for all options. In addition to the standard options shown below, we offer bespoke designs that are available on request from our sales team. The maximum glazed area's are detailed below, subject to minimum clearances.

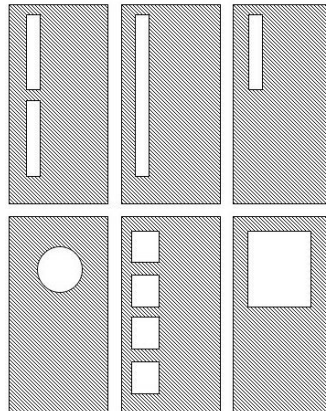
Placement dimensions



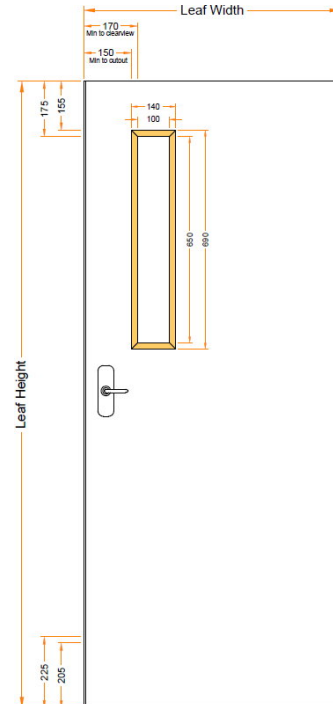
Glass types & size limitations

APPROVED GLASS & CLEARVIEW SIZES				
Rating	Glass	Max Height	Max Width	Max Area
NFR	10.38	2250	860	1.935 m ²
-/30/-	Pyro 15	2250	860	1.935 m ²
-/30/30	Pyro 15	2250	860	1.935 m ²
-/60/-	Pyro 15	1830	610	0.92 m ²
-/60/30	Pyro 15	1830	610	0.92 m ²
-/60/60	Pyro 15	650	100	0.065 m ²
-/60/60	Pyro 23	1700	300	0.51 m ²
-/60/60	Pyro 23	450	450	0.2 m ²
E-/60/30	Pyro 15	814	504	0.41 m ²
-/240/30	Robax 6mm	600	100	0.06 m ²
-/240/-	Robax 6mm	750	150	0.11 m ²

Some possible design idea's



Gun Slot design

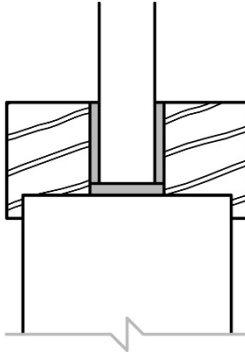


GLAZING BEAD OPTIONS

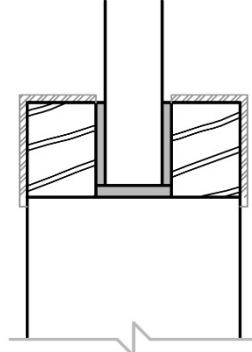
Square (standard)

- No additional charge
- Includes optional aluminium overcap

Square Bead with Lip



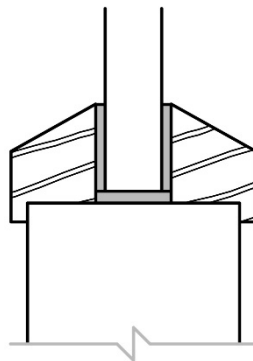
Aluminium Bead



Bevel (previous standard)

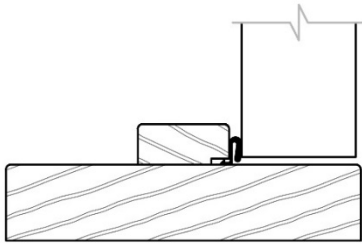
- Optional
- No aluminium cap option

Bevel Bead with Lip



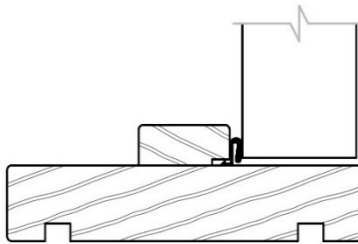
30 - 32 mm PQ timber (types 1, 2 & 3), width 81 – 350mm, with (30 x 12) planted stops, full width available at extra cost (other timber options available by request) or 1.6 mm electrogalv steel (types 5, 6, 7 & Speedwall), paint quality or powdercoat options available

T1 – Timber



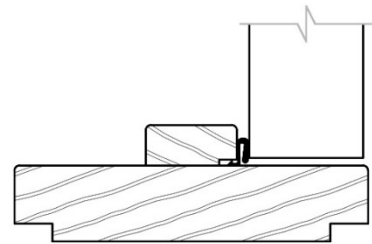
Timber flat for architrave

T2 - Timber



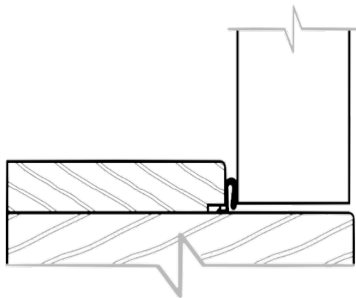
Grooved for wall lining to suit (12 mm reveals)

T3 - Timber



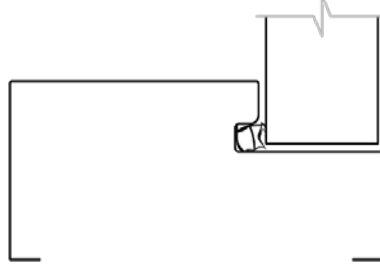
Rebated for wall lining to suit (non-standard surcharge may apply)

Timber – Full Width planted stop



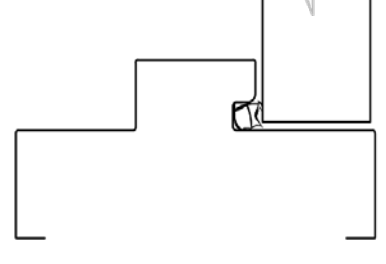
Available for all timber profiles (non- standard surcharge applies)

T5 – ~~Steel~~Timber



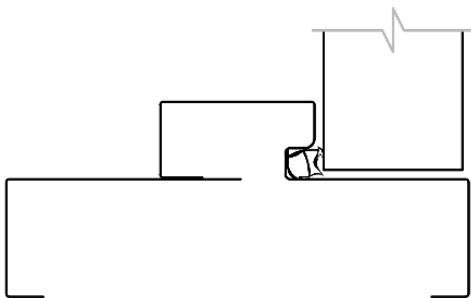
Steel width 106 – 350mm

T6 – ~~Steel~~Timber



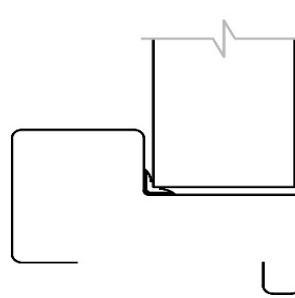
Steel width 141 – 203mm

T7 – two piece split steel



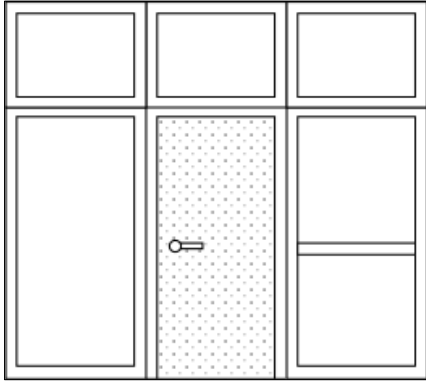
Ideal for retrofit situations. No additional charge. Min 104mm if masonry wall, Min 112 mm if stud wall – no max

Steel Speedwall



Requires Speedwall C track (80mm end cap)

The I-30-H is available in a range of sidelight and overlight combinations that are generally made to order. If you require a sidelight or overlight, please contact a member of our sales team to discuss and confirm specific design and pricing details.



- Max overall combined height 3000 mm
- 45 mm timbers throughout.
- No limit to overall width.
- Each module is limited by weight, transport and on site handling capabilities.
- Max door height 2700 mm
- Sidelights with optional mid rail – consider manifestation needs

APPROVED HARDWARE

The minimum requirement is for a fire door to be self-closing and self-latching. Hardware must be selected from NZ Fire Doors' Approved Hardware list from the column '30 min'. Fitting any hardware that inhibits self-closing or self-latching is not approved by NZS 4520

IMPORTANT: Fitting untested or inappropriate hardware may affect the performance of the door and will void the warranty.