



X260 MEDI-VET[®] SteriTouch[®]

Technical Data Sheet

Issued: 3rd September 2020
Document #: TDS 260 V1 NZ
Page 1 of 3

CURING WATERPROOFING & ANTIMICROBIAL PROTECTION

Description & Uses

X260 Medi-Vet[®] is a single pack one application spray on system that deeply penetrates new or existing concrete, provides curing, permanent waterproofing, and deep matrix resistance to bacteria, moulds and fungi. **X260 Medi-Vet[®]** with, safe silver ion, **SteriTouch[®]** has independent antimicrobial testing showing complete protection against *E.coli* and *Methicillin Resistant Staphylococcus aureus*. **X260 Medi-Vet[®]** conforms to the moisture suppressant requirements as per New Zealand Floor Covering Standard: **NZAS1884-2013**. Provides an effective moisture barrier for impervious floor coverings and coatings and achieves the cure requirements of **NZS 3109:1997** and **NZS 3101:Part 1:2006**.



Features and Benefits

- Will cure concrete equal to water pond curing.
- Permanently waterproofs concrete from any direction.
- Moisture barrier for impervious coatings and coverings.
- Proven control of *E.coli* and *Staphylococcus aureus*- MRSA
- Makes concrete impermeable, increasing longevity.
- Exceptional densifier and hardener for concrete.
- Increases tensile & compressive strength.
- Resists freeze thaw damage.
- Retards efflorescence.
- Can be used on vertical or horizontal substrates.
- Zero VOC, environmentally friendly, user safe.
- Compatibility with most floorcovering systems and coatings.
- After trade friendly.
- Indefinite shelf life.
- Reduces dry shrinkage cracking.
- Stabilises pH.
- Minimum site disruption, trafficable after 2 hours.
- Water cleanup.

Physical and Chemical Properties

Appearance:	Low viscosity cloudy-white liquid.
Odour:	Almost none.
pH:	Ca. 11.4
Initial Boiling Point / Boiling Range:	> 100°C @ 760 mm Hg.
Flash-point:	Not applicable.
Flammability (solid, gas):	Not applicable.
Relative Density:	Ca. 1.10 @ 20°C.
Upper/Lower Flammability or Explosive Limits:	Not applicable.
Solubility:	Fully miscible in water.
Auto-ignition Temperature:	Product is not self-igniting.
Viscosity:	Low.
Volatile Organic Compounds(VOC) Content:	0.0 % w/w.

Recommended Substrate Conditions & Preparation

Freshly Placed Concrete: 5m² per litre.
Existing Concrete: 5m² per litre

Important Notes:

1. Wax, paint, curing compounds or a burnished surface restricting access to concrete's interior must be chemically or mechanically removed for **X260 Medi-Vet[®]** to penetrate and work properly.
2. Areas of high porosity have a faster penetration rate. These areas appear dry immediately after spraying and will require additional product.
3. Do not apply on frozen substrate or when temperature is below 3°C when getting colder. Call for advice if applying during colder periods.
4. Do NOT apply if rain is forecast within 3 hours.
5. Before applying any paint, adhesives or any other coatings on existing cured concrete, wait 24 hours after application with **X260 Medi-Vet[®]**. Pressure wash or sand and clean, then check visually to be satisfied purging has completed (If required a second or subsequent coats may be required). Always follow coating manufactures surface preparation requirements.
6. **X260 Medi-Vet[®]** may etch glass/tiles or dull brushed and shiny aluminium and can be difficult to remove from other surfaces once it dries. Cover and mask surrounding surfaces or rinse immediately if sprayed. Avoid walking product on other finishes.
7. We recommend the use of a painters mask during application. Refer to MSDS available from www.giltedge.co.nz



THE NAME SAYS IT ALL

X260 MEDI-VET[®] SteriTouch[®]

Technical Data Sheet

Issued: 3rd September 2020
Document #: TDS 260 V1 NZ
Page 2 of 3

Application Guide

Note: In hot climates, mist-wet the surface with water and remove any puddles prior to application. Employ best practice hot weather placement methods.

On Already-Set Concrete: Apply **X260 Medi-Vet[®]** using a low-pressure non-atomizing, spray apparatus such as a pump-tank or battery pack sprayer complete with fan spray nozzle. Holding spray tip (eg .019" - .024") 150mm from surface, apply **X260 Medi-Vet[®]** at minimum rate of **5m² per litre** with an overlapping spray pattern of 50%. Begin application at the lowest elevation. For example, walls and slopes should be applied side to side, from the bottom up.

Using a soft broom sweep and spread out puddled product as it penetrates. Do not allow product to puddle dry on the surface (remove off surface after one hour). If product gels on the surface remove with a squeegee. Before applying any paint, adhesives or any other coatings, wait a minimum of 24 hours after application

of **X260 Medi-Vet[®]**. Check that concrete surface is dry and any purging has completed. Pressure wash or sand clean. Always follow coating or covering manufacturer's surface preparation requirements.

At Time of Pour:

Apply with a low-pressure non-atomizing, spray apparatus such as a pump-tank or battery pack sprayer. **X260 Medi-Vet[®]** is ideally applied to the newly-poured concrete surface as soon as is practical following its surface finishing phase. Should conditions require the surface to be walked on, for application, concrete should be allowed the time to adequately set, so as not to imprint or mar its surface during application. Recommended minimum coverage rate is **5m² per litre**. Floor coverings and coatings can be installed after 14 days from concrete placement and **X260 Medi-Vet[®]** application.

Additional Data and Precautions

Available in 5, 15, 200 and 1000 litre containers.

1. Protect areas not intended for coverage.

2. In windy conditions take care to avoid spray drift damage to parked vehicles and buildings.

Warranty Registration & Training

An issued 15 year warranty is project specific and will require us to provide consultation, a site specific specification and a registered specification/warranty number prior to the commencement of product application. A Warranty Application Form, will be forwarded to the applicator, and must be completed in full by the applicator, and forwarded to **Gilt Edge Industries** at the end of the project.

For all customers requiring a written warranty, all applicators must be fully trained, and approved by either **Gilt Edge Industries** or **Protect Crete NZ Ltd**. Full training and installation advice is available for the full **Protect Crete** product range. Call your local **Gilt Edge** store to arrange this complimentary help today.

www.giltedge.co.nz

Testing and Certifications

Middle Tennessee
State University
Testing and Review



Test		Control Sample	Medi Vet Sample	Results Comparison
Designation	Property	All concrete controls are water cured		
AS 1012.9 ASTM C39	Compressive Strength	28.9MPa 4,191 psi	31.0 MPa 4,496 psi	7% Increase
AS 1012.8 ASTM C78	Flexural Strength	2.52 MPa 365 psi	2.89 MPa 419 psi	15% Increase
Chaplin AbraderA	brasion Loss	2.47 mm 0.10 in	1.46 mm 0.06 in	41% Reduction
Surface Dusting		2.57 g/0.25 m ²	1.78 g/0.25 m ²	31% Reduction
ASTM C1202	Rapid Chloride Penetration	597 / 543 / 10.097 Coulombs	148 / 136 / 6.582 Coulombs	35% to 75% Reduction
HKHA B2.9	Sorptivity	0.164 mm/(min) ^{1/2}	0.010 mm/(min) ^{1/2}	94% Reduction
ACCI Water Permeability Tset	Water Permeability	1.5 x 10 ⁻¹³ m/s	2.5 x 10 ⁻¹⁴ m/s	83% Reduction
USACOE C48	Water Permeability	NA	0 Leakage @ 30.5 m Head Pressure 0 Leakage @ 100 ft Head Pressure	
DIN 1048W	ater Permeability	98.4 mm @ 0.33 hrs 3.9 in @ 0.33 hrs	5.5 mm @ 72 hrs 0.22 in @ 72 hrs	94% Reduction
ASTM C666	Mass Loss @ 300 Freeze/Thaw Cycles	4.80%0	.70%	85% Reduction
ISO 22196 JIS Z 2801:2000	Antimicrobial Performance*	Number of live organisms (Colony Forming Units)		>99.995% Reduction
		0 Hours 140000 24 Hours 220000	0 Hours 140000 24 Hours < 10	

*Test bacteria: *Escherichia coli*, Methicillin resistant *Staphylococcus aureus*

May 2018



For more information visit: www.protectcretenz.co.nz or www.giltedge.co.nz



PROTECT CRETE NZ Ltd
PO Box 10080, Rotorua Mail Centre
Rotorua 3046
Ph: +64 9 441 9003
Email: sales@protectcretenz.co.nz



Gilt Edge Industries
CHC: 03 379 7067
AKL: 09 443 7067
PH: 0800 445833
Email: help@giltedge.co.nz

Technical & Sales Assistance
Email: sales@giltedge.co.nz
www.giltedge.co.nz

Manufactured by Oxtex Australia



THE NAME SAYS IT ALL

X260 MEDI-VET[®] SteriTouch[®]

Technical Data Sheet

Issued: 3rd September 2020
Document #: TDS 260 V1 NZ
Page 3 of 3



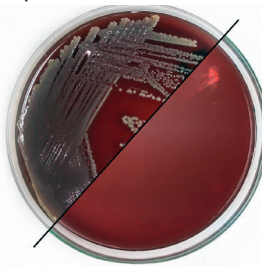
SteriTouch is an established brand in antimicrobial technology, based in the UK. The anti microbial performance of **X260 Medi-Vet[®]** is confirmed by independent laboratory testing to the international standards (JIS and ISO) and is proven to be 99.99% effective against MRSA and E.coli (test reports available on request). With the combination of **SteriTouch[®] X260 Medi-Vet[®]** creates a permanent barrier against the growth of bacteria, biofilm and moulds.

SteriTouch is safe. SteriTouch is an additive based on ionic silver. We do not use nano-silver, triclosan or other organic antimicrobial additives which have health and environmental concerns. The additives we use are non-leaching and non-sensitising.

SteriTouch gives continuous protection. Ionic silver based additives will not lose efficacy due to leaching or migration, they are evenly dispersed and embedded through out **X260 Medi-Vet[®]** even scratches and abrasion do not effect the antimicrobial performance. Cleaning chemicals such as chlorine bleach, disinfectants, alcohol and even harsh industrial products like MEK (methyl ethol keytone) will no diminish the antimicrobial properties of **X260 Medi-Vet[®]**

Independent Antimicrobial Test Report

Evaluation of the antimicrobial performance of samples containing antimicrobial additives. All testing is conducted by an independent laboratory using the ISO 22196 / JIS Z 2801:2000 test method, briefly summarised as follows;
Each test sample is inoculated with a suspension of the test organism. The inoculation is held in contact with the test sample using a sterile polyethylene film. All test samples are inoculated in triplicate, with an additional



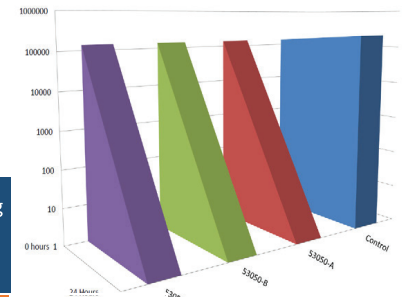
three replicates of the control. The bacterial population on three control replicates is evaluated immediately following inoculation.

This is assumed to be the initial population on all test samples (i.e. the population at zero hours. The remaining samples are incubated for the test period (24 hours) at 35°C, at which time the bacterial population is evaluated.

MRSA (Methaicillin Resistant Staphylococcus aureus)

Tested at 35°C

Sample		Number of live organisms (Colony Forming Units)		% reduction of Colony Forming Units, expressed as comparison with control	
		0 hours	24 hours		
Control	Untreated polyethelene film	140000	220000	N/A	
53050-A	X260 Medi-Vet with ST1156	140000	<10	>99.99991% Reduction	EXCELLENT
53050-B	X260 Medi-Vet with ST1156	140000	<10	>99.99991% Reduction	EXCELLENT
53050-C	X260 Medi-Vet with ST1156	140000	<10	>99.99991% Reduction	EXCELLENT

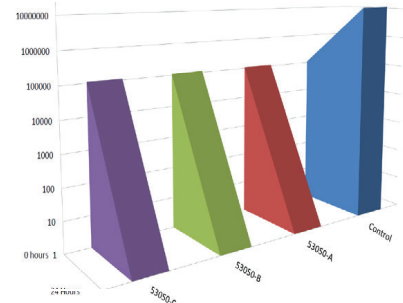


Notes: CFU = Colony Forming Units
The theoretical limit of detection is 10 CFU. If no bacteria are recovered the result is reported as "10 CFU".

Escherichai coli

Tested at 35°C

Sample		Number of live organisms (Colony Forming Units)		% reduction of Colony Forming Units, expressed as comparison with control	
		0 hours	24 hours		
Control	Untreated polyethelene film	110000	120000000	N/A	
53050-A	X260 Medi-Vet with ST1156	110000	<10	>99.99991% Reduction	EXCELLENT
53050-B	X260 Medi-Vet with ST1156	110000	<10	>99.99991% Reduction	EXCELLENT
53050-C	X260 Medi-Vet with ST1156	110000	<10	>99.99991% Reduction	EXCELLENT



For more information visit: www.protectcretenz.co.nz or www.giltedge.co.nz



PROTECT CRETE NZ Ltd
PO Box 10080, Rotorua Mail Centre
Rotorua 3046
Ph: +64 9 441 9003
Email: sales@protectcretenz.co.nz



Gilt Edge Industries
CHC: 03 379 7067
AKL: 09 443 7067
PH: 0800 445833
Email: help@giltedge.co.nz

Technical & Sales Assistance
Email: sales@giltedge.co.nz
www.giltedge.co.nz

Manufactured by Oxtex Australia