



**GILT EDGE ARCHITECTURAL**  
YOUR SPECIFICATION PARTNER

## **Gilt Edge Architectural Wet Rooms Design**

### **GILT EDGE ARCHITECTURAL SEAMLESS FLOORING SYSTEMS**

#### **HEALTHCARE - WET ROOMS: SCREEDED 'SET DOWN' SUBFLOORS AND SHEET VINYL FLOOR/WALL COVERINGS INSTALLATION GUIDLINES**

**SCOPE:**

For the installation of Preformed Wet Room and Shower Subfloors 'Set Downs', Including Waterproof Membrane Integration, and the Installation of Specified Commercial Sheet Vinyl Floor /Wall Coverings.

NB: To safeguard the long term structural integrity of facility interiors, the integration of a 'Second Line of Defence Water Proof Membrane System' is an essential element in Subfloors 'Set Downs' Systems Application.

The following installation guidelines are to be read in conjunction with project specific architectural plans and documentation.

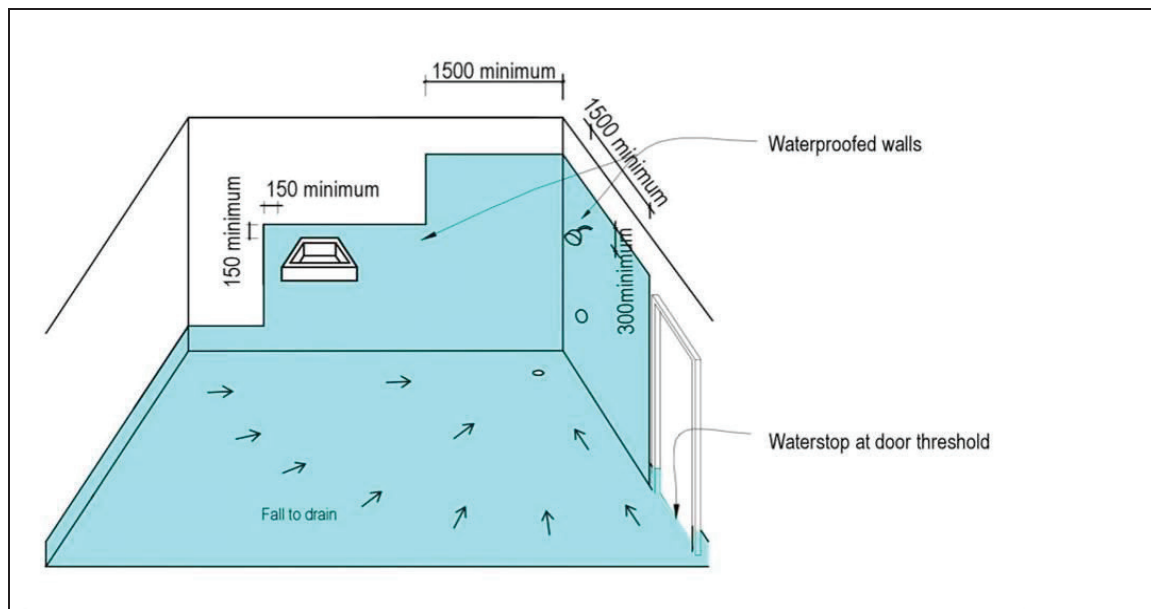
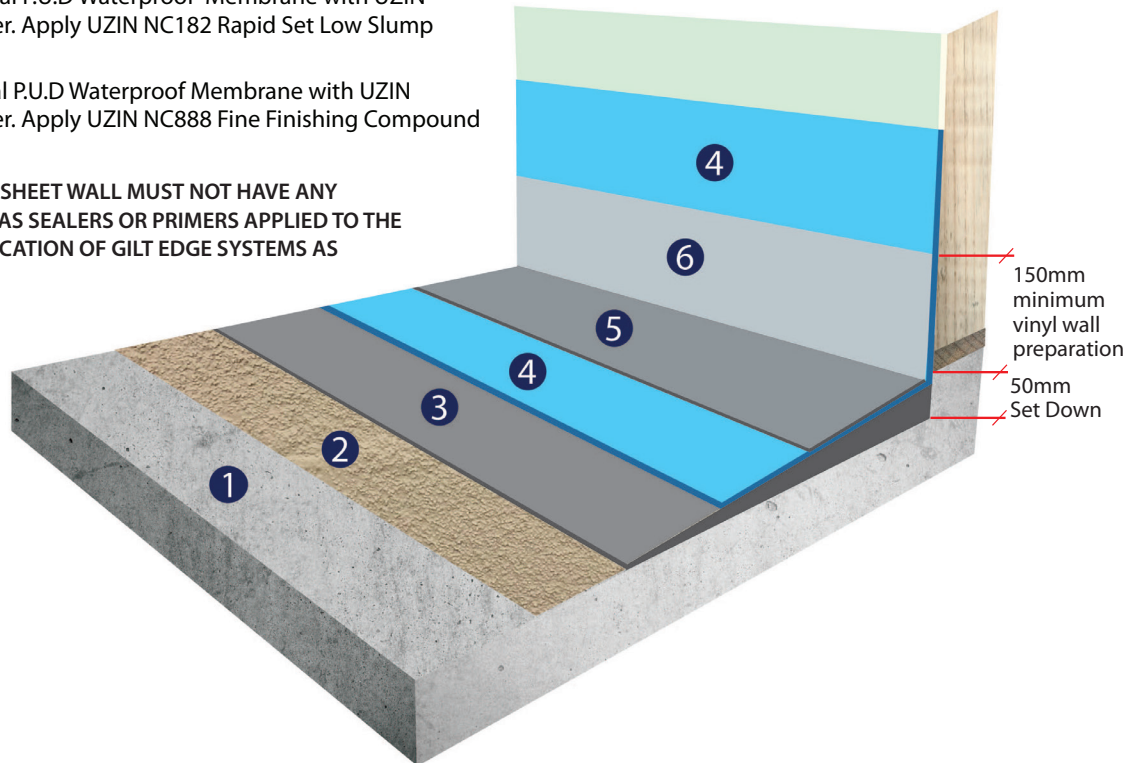
The following installation guidelines are to be read in conjunction with the accompanying specification: *GE Healthcare Wetrooms IW 01042020*



## Typical Subfloors 'Set Downs' Systems Application.

- ① Concrete Subfloor treated with Protect Crete Densi-Proof at time of pour with 50mm Minimum 'Set Down' built in Concrete Subfloor
- ② UZIN PE520 Waterbased Additive/Primer mixed with UZIN SC980 Low Shrink Rapid set Cement to form brush applied Bonding Screed.
- ③ UZIN SC980 Low Shrink Rapid set Cement mixed 1 Part to 4 Parts Sand/Aggregate Blend to form Bulk Fill Screed.
- ④ Floors: Prime UZIN SC980 Screed with Roberts Universal Primer. Apply RLA Flexiseal P.U.D Waterproof Membrane.
- ④ Walls: Prime GIB Aqualine or Other Sheet Wall with Roberts Universal Primer. Apply RLA Flexiseal P.U.D Waterproof Membrane
- ⑤ Floors: Prime RLA Flexiseal P.U.D Waterproof Membrane with UZIN PE 280 Waterbased Primer. Apply UZIN NC182 Rapid Set Low Slump Mortar to Smooth.
- ⑥ Walls: Prime RLA Flexiseal P.U.D Waterproof Membrane with UZIN PE 280 Waterbased Primer. Apply UZIN NC888 Fine Finishing Compound to Smooth.

NB: GIB AQUALINE OR OTHER SHEET WALL MUST NOT HAVE ANY SURFACE TREATMENTS SUCH AS SEALERS OR PRIMERS APPLIED TO THE SURFACE PRIOR TO THE APPLICATION OF GILT EDGE SYSTEMS AS SPECIFIED



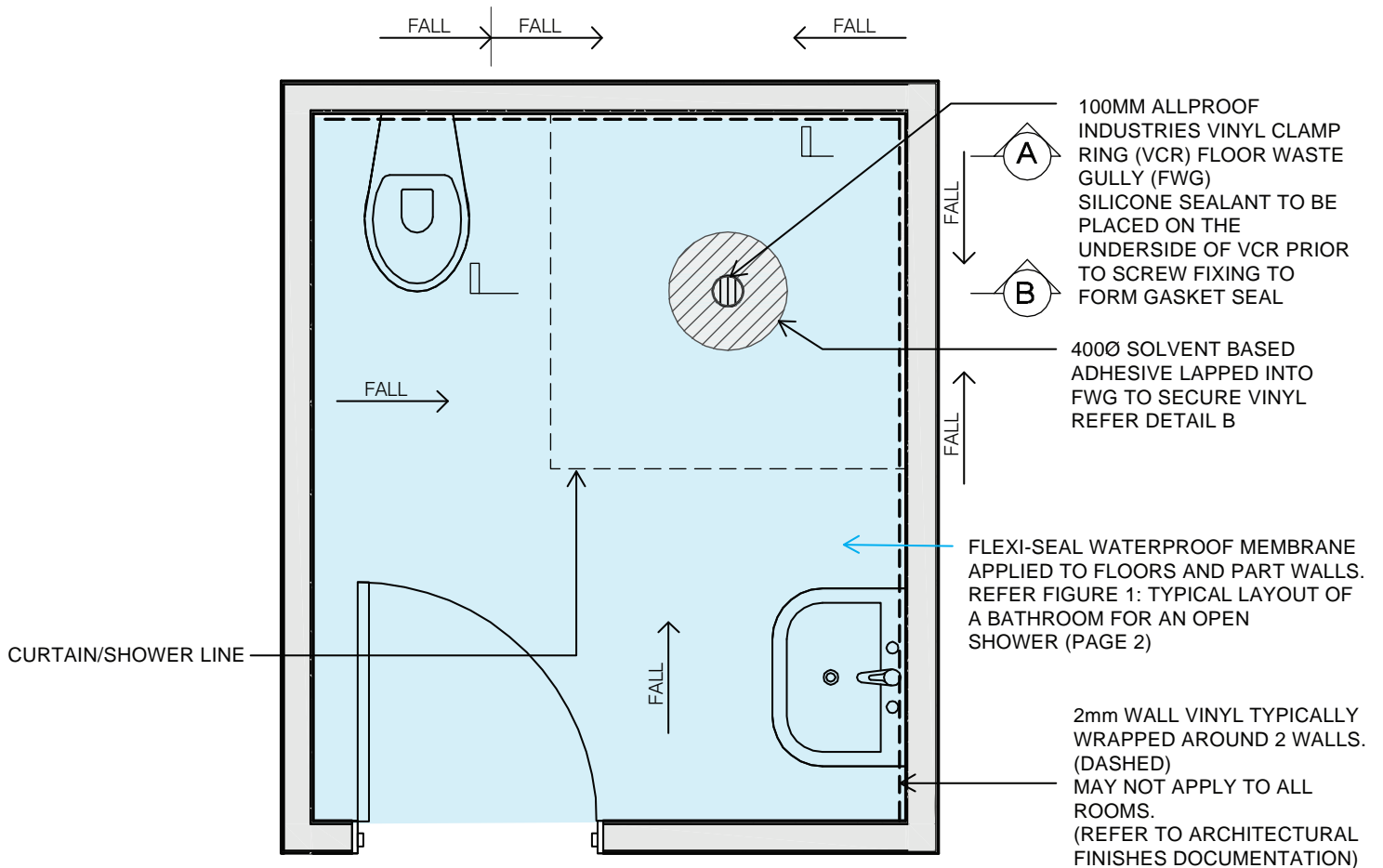
**Figure 1: Typical layout of a bathroom for an open shower**

Note that for a slide shower the membrane must extend 600mm past the length of the pick (also called a hand-held shower rose).

Illustration sourced from Code of Practice for Internal Wet Area Membranes. Consultation Version July 2016

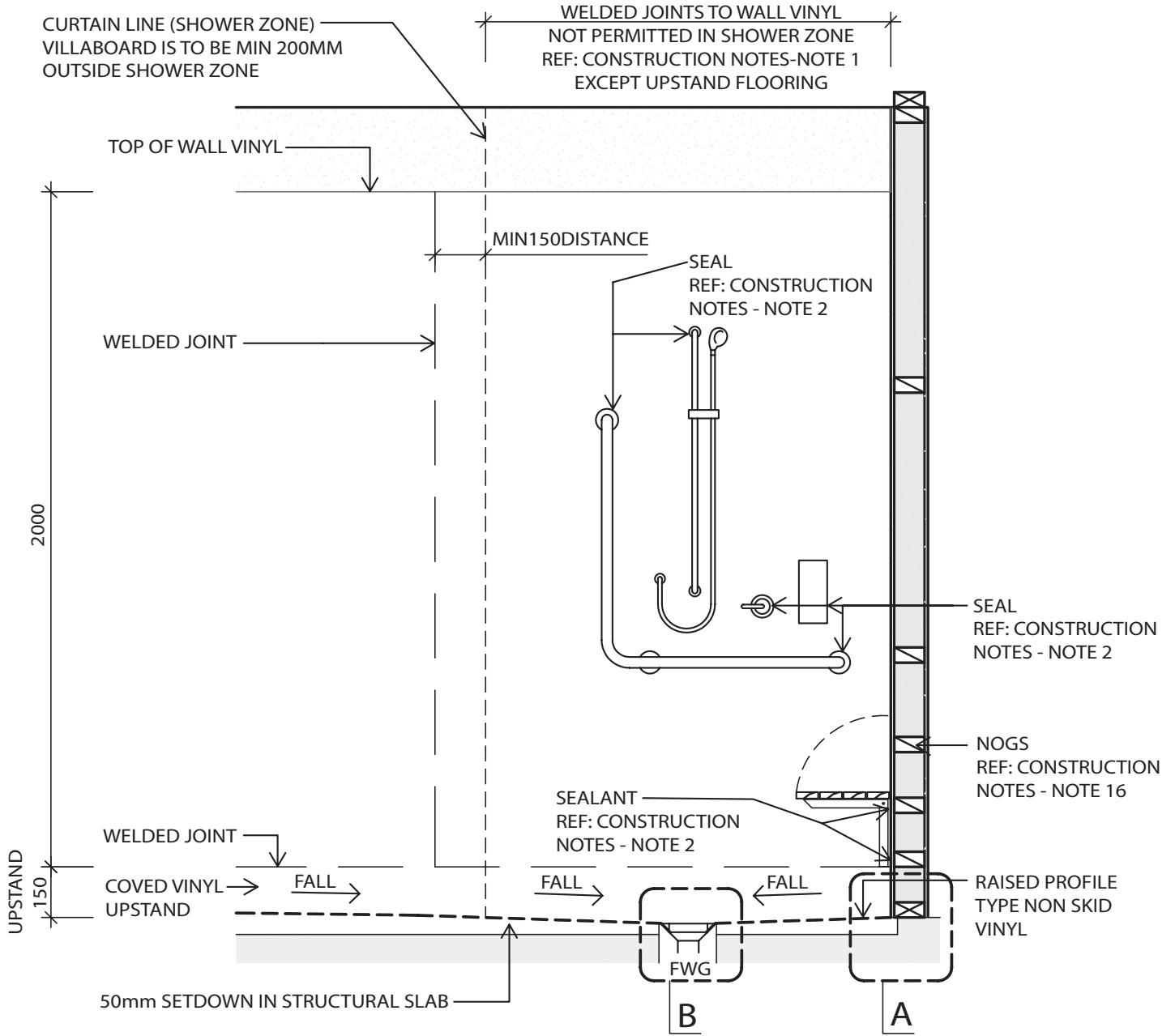
# TYPICAL BATHROOM/SHOWER PLAN

SCALE 1 : 25



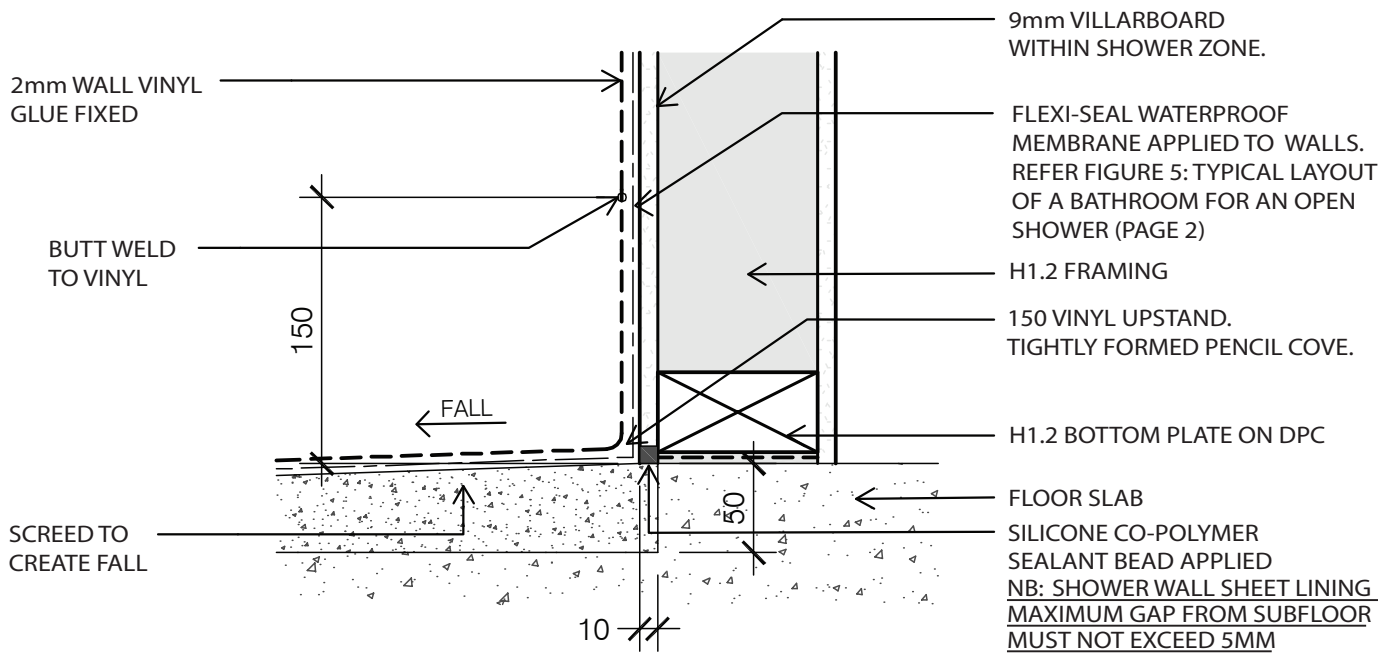
# TYPICAL SHOWER CROSS SECTION

SCALE 1 : 20



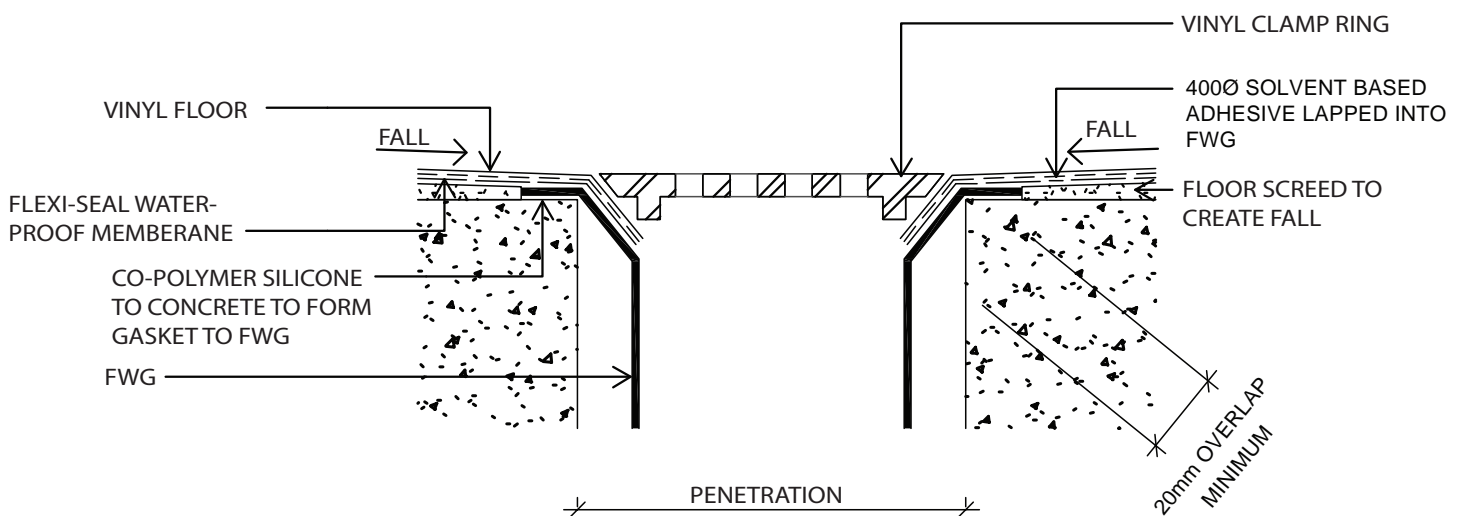
# DETAIL A - FLOOR COVING

SCALE 1:5



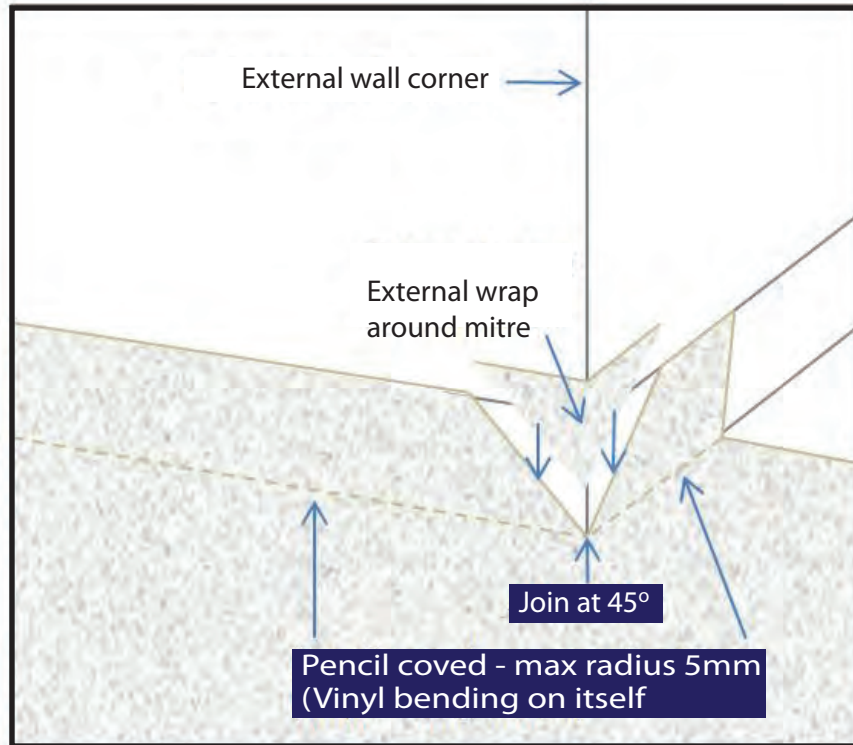
# DETAIL B - TYPICAL FWG

SCALE 1:4

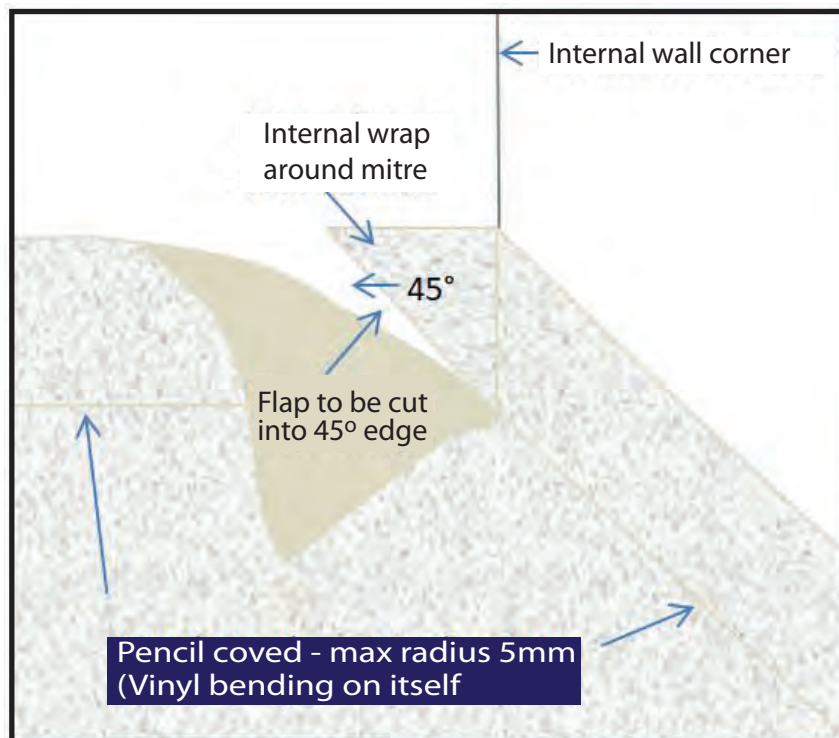


# Vinyl Coving: Pencil Cove

External pencil coved wrap around mitre



Internal pencil coved wrap around mitre



Pencil coving is based on a recommendation from the vinyl manufacturer and also whether the vinyl type is able to bend on itself without creasing (radius 5mm)

Illustrations sourced from Floor NZ Best Practice Guidelines—Resilient Floor Coverings Planning & Installation Version June 2019

# CONSTRUCTION NOTES

## Vinyl Joins and Penetrations

1. Vertical joints not permitted inside shower curtain line.
2. Any penetrations to be well filled with appropriate co-polymer sealers prior to applying mechanical fasteners.
3. Joins on internal corners not permitted. - Locate join minimum 150mm from a corner.
4. Joins on external corners not permitted. - Locate join minimum 150mm from a corner.
5. External corner - floor to wall junction to be butterfly type.
6. Internal corner - floor to wall junction to be 45deg angle type.
7. Shower wall sheet lining maximum gap from floor must not exceed 5mm.
8. All welding to be as per manufacturer instructions, well fused, no burning. Joints chamfered or grooved to about 75% of the thickness prior to welding.
9. All welds to be double trimmed.

## Vinyl Types

10. Raised profile type non-skid safety vinyl to be used in shower bases.
11. Contract commercial wall vinyl types for wet areas as specified.

## Laying Method

12. Shower base non-skid vinyl coved min 150-200mm above floor.
13. Coving: Tightly formed pencil cove.
14. Upper sheets to be laid horizontal to avoid joins.
15. Vinyl floor and up stand must be neatly trimmed and sealed around door frames. Gaps greater than 1.5mm prior to sealing will not be accepted.

## General Notes

16. All fixings to have solid nogs or studs fitted before installing wall linings.  
Typically along a 2m wall that includes a shower keep vinyl 2000 above 150 cove to capture an adjacent fitting such as a toilet pan or hand basin.

