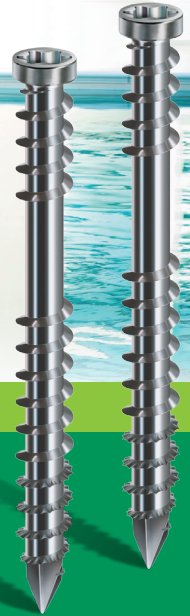


The SPAX logo is located in the top right corner, featuring the word "SPAX" in white, bold, sans-serif capital letters inside a green square. The letter "X" is enclosed within a white circle.

Decking

## The ideal Stainless Steel Screw for Timber Decking



### **SPAX Decking Screw**

particularly suited for coastal and corrosive areas

- Available in 304 A2 or 316 A4 stainless steel
- Permanent protection against corrosion
- Also suitable for 140x19 decking boards
- Cylinder head
- Fixing thread
- CUT point
- Easy screwing\*
- SPAX typical ground serrations
- T-STAR plus recess

\*We recommend pre-drilling

**IMPORTANT**  
Scan QR code  
for instructions  
before using  
this product.



**MADE IN GERMANY**

SPAX PACIFIC PTY. LTD. · ALTENLOH, BRINCK & CO - GROUP

Australia · PO Box 975 · Gordonvale · QLD 4865 | Phone: 07 4056 2009 | info@spaxpacific.com

New Zealand · PO Box 55104 · Eastridge · Auckland 1146 | Phone: 09 570 7447 | info@spaxpacific.co.nz

[www.spaxpacific.com](http://www.spaxpacific.com)



# The ideal Stainless Steel Screw for Timber Decking

## SPAX Decking Screw

Stainless Steel A2/304

**A2**  
AISI 304

**A2**

Dimensions [mm]					Packaging unit	SPAX-No.
Thread Ø d1	Length total Ls	Maximum board-thickness	Length partial thread LgT	BIT size T	SPAX BOX [pieces]	
<b>5.0</b> Ø d <sub>k</sub> = 7.0 mm	40	12	21	25	200	0537000500403
	50	19	21	25	200	0537000500503
	60	24	26	25	100	0537000500603
	70	28	31	25	100	0537000500703
	80	32	36	25	100	0537000500803

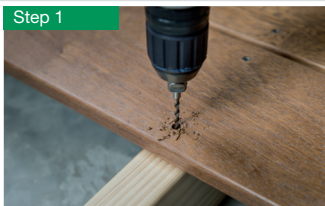
## SPAX Decking Screw

Stainless Steel A4/316

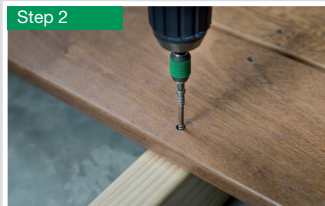
**A4**  
AISI 316

**A4**

Dimensions [mm]					Packaging unit	SPAX-No.
Thread Ø d1	Length total Ls	Maximum board-thickness	Length partial thread LgT	BIT size T	SPAX BOX [pieces]	
<b>6.0</b> Ø d <sub>k</sub> = 7.0mm	40	12	23	25	200	0538000600403
	50	19	23	25	100	0538000600503
	60	24	28	25	100	0538000600603
	80	32	40	25	100	0538000600803
	100	40	40	25	100	0538000601003



**Step 1:** Drill the boards and substructure with a SPAX Step Drill. Use the complete length of the drill at the highest possible speed (around 3,000 rpm).



**Step 2:** Drive the decking screw straight in with a *T-STAR plus* T25 BIT without stopping until the head is flush.



**Result:** Impeccable visual appearance with minimal splitting. Long lasting connection with minimum movement due to fixing thread.