

Ultratop System

“terrazzo alla veneziana effect” Dynastone Color aggregates

ULTRA-FAST SETTING CEMENTITIOUS SYSTEM TO CREATE POLISHED FLOORS WITH A “TERRAZZO ALLA VENEZIANA EFFECT”

Products used:

Primer SN - Quartz 1.2

Dynastone Color - Mapefloor I 910

Ultratop - Ultratop Stucco

Mapefloor Finish 630

Mapelux Opaca or Mapelux Lucida

DESCRIPTION

ULTRATOP SYSTEM “terrazzo alla veneziana effect” DYNASTONE COLOR aggregates is a system to create polished floors similar to the “terrazzo alla veneziana”, by applying a 15 to 20 mm thick layer of **DYNASTONE COLOR**, artificial coloured aggregates and **ULTRATOP**, self-levelling, ultra-fast setting cementitious mortar inside civil environments, such as shopping centres, show-rooms, schools, museums, theatres, shops, offices, apartments, etc. The polishing cycle is carried out using the dry technique with special diamond-tipped tools.

ULTRATOP SYSTEM “terrazzo alla veneziana effect” floorings are left on view to form finished floors and may be used in the decorative sectors of buildings for civil use.

CLASSIFICATION ACCORDING TO EN 13813

Smoothing layers of **ULTRATOP** applied as specified in the attached Technical Data Sheet are classified as CT - C40 - F10 - A9 - A2_{fl}-s1 in compliance with EN 13813 Standards.

WHERE TO USE

Decorative floorings inside civil buildings and for smoothing and levelling layers on new and old substrates to make them suitable for pedestrian traffic in apartments, offices, shops, show-rooms, restaurants, museums, theatres and shopping centres.

ULTRATOP SYSTEM

“terrazzo alla veneziana effect”

is used in:

- residential buildings, shops, restaurants, schools, museums, theatres and exhibition halls to make new polished floors with a “terrazzo alla veneziana” effect;
- pedestrian areas in shopping centres.

PERFORMANCE AND ADVANTAGES OF THE SYSTEM

- May be applied manually at a thickness of between 15 and 40 mm.
- Dries quickly, polishing operations may be carried out approximately 2 days after application.
- The dry-polishing technique leaves the rounded **DYNASTONE COLOR** aggregates on view and highlights its perfect physical and chemical compatibility with **ULTRATOP**.
- Guarantees perfectly flat, smooth, reflective surfaces.

COLOURS AVAILABLE

ULTRATOP is available in the following colours: light grey, white, beige, red, anthracite and standard (beige to light brown).

DYNASTONE COLOR aggregates are available in the following colours: white, yellow, orange, red, brown, green and blue.

Floors made using **ULTRATOP** may have an uneven colour, typical of cementitious products.

CONSUMPTION

Primer:

PRIMER SN

0.3-0.6 kg/m² per layer, according to the characteristics of the substrate

Aggregates:

DYNASTONE COLOR 10 kg/m² per cm of thickness

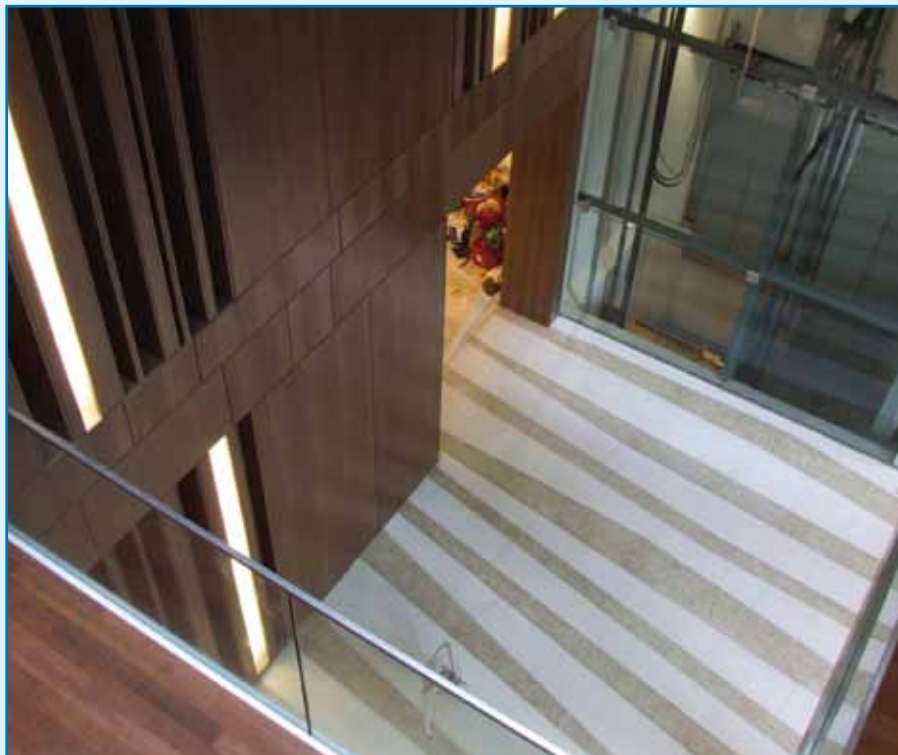
Binder for Dynastone Color:

MAPEFLOOR I 910 1 kg per 20 kg of Dynastone Color

Self-levelling mortar:

ULTRATOP

10 kg/m² per cm of thickness



Ultratop System

“terrazzo alla veneziana effect” Dynastone Color aggregates

Grout:

ULTRATOP STUCCO according to the micro porosities of the substrate

Finishing layer:

MAPEFLOOR FINISH 630 0.1-0.2 kg/m²

Wax:

MAPELUX OPACA 50 g/m²
MAPELUX LUCIDA 50 g/m²

The consumption figures for the *primer* are based on a shot-blasted surface. Consumption increases if the *primer* is applied on rougher or highly porous surfaces.

PREPARATION OF THE SURFACE

1. Characteristics of the substrate

Before applying **ULTRATOP SYSTEM “terrazzo alla veneziana effect”** the substrate on which the flooring is to be applied must be carefully analysed. To obtain a good finish, the following must be checked:

- That there are no materials which could potentially prevent the bond of the successive layers, such as:
 - cement laitance;
 - dust detached or loose portions;
 - protective wax, curing products, paraffin or efflorescence;
 - oil stains or layers of resin;
 - traces of paint or chemical products.
 Any other kind of pollutant which may compromise the bond of the coating must be removed before applying the product. If the substrate is polluted by such elements, it MUST be prepared by carrying out a special preparation cycle. If required, contact the Technical Services Department for advice on the most suitable preparation cycle.
- The level of humidity in the substrate must be no higher than 4% and a suitable vapour barrier must be installed.
- The pull off strength of the substrate must be more than 1.5 N/mm².

If all the above conditions are completed with **ULTRATOP SYSTEM “terrazzo alla veneziana effect”** may be applied on concrete industrial floors, conventional or polymer-modified cementitious screeds, controlled-shrinkage screeds such as those made using **MAPECEM** or **TOPCEM**, old cement and ceramic tiles, if prepared correctly.

2. Preparation of the substrate

It is very important that the surface is prepared correctly to guarantee correct installation and get the best performance from **ULTRATOP SYSTEM “terrazzo alla veneziana effect”**.

The most suitable method to prepare the surface is by shot-blasting or milling. All dust must then be removed

TECHNICAL DATA (a +23°C)

Compressive strength (Ultratop + Dynastone Color - ratio 1:1) (N/mm ²):	after 7 days ≥ 50	after 28 days ≥ 55
Flexural strength (Ultratop + Dynastone Color - ratio 1:1) (N/mm ²):	after 7 days ≥ 9	after 28 days ≥ 10
Resistance to abrasion after 28 days (EN 13813 : 2002) Böhme abrasion test (Ultratop + Dynastone Color - ratio 1:1) (cm ³ /50 cm ²):	9	
Colours available (Ultratop):	light grey, white, beige, red, anthracite and standard	
Colours available (Dynastone Color):	white, yellow, orange, red, brown, green and blue	

with a vacuum cleaner. Do not use chemical preparation methods, such as acid rinsing, or aggressive percussion tools, otherwise the substrate may be damaged.

Any defects present, such as cracks, must be repaired beforehand using either **EPORIP** or **EPOJET**, according to the width and depth of the defects.

If the floor is in a particularly poor condition or if there are holes or pitting, use **MAPEGROUT SV** as it is or mixed with **MORTAR GRAVEL**. Before applying the mix of **DYNASTONE COLOR/MAPEFLOOR I 910**, cementitious and/or ceramic or natural stone surfaces must be primed with **PRIMER SN**, and where necessary, reinforced with **MESH 320**, glass fibre mesh and fully sprinkled with **QUARTZ 1.2**. After applying **PRIMER SN** let it dry out for 12-24 hours, according to the surrounding temperature. Before casting the **DYNASTONE COLOR** aggregates mixed with **MAPEFLOOR I 910**, remove excess sand with a vacuum cleaner.

3. Preliminary checks before application

Make sure that all the checks indicated in point 1 “Characteristics of the substrate” have been carried out, and that all the operations indicated in point 2 “Preparation of the substrate” have been carried out correctly.

The surrounding temperature must be between +5°C and +35°C.

4. Preparation and application of the products

Carefully follow the preparation instructions indicated in the Technical Data Sheet for each single product which forms the complete cycle.

• Primer for concrete/ceramic/cementitious substrates/natural stone surfaces (PRIMER SN)

Pour component B into component A and mix well with a low-speed drill with a spiral mixing attachment to form a smooth, homogenous blend. Apply an even layer of **PRIMER SN** on the surface with a metal trowel or smooth rake. Where required, embed **MESH 320** glass fibre mesh in the layer of the *primer*. Immediately

after application, the fresh surface of **PRIMER SN** must be fully sprinkled with **QUARTZ 1.2** to form a perfect bond with the next layer. Leave **PRIMER SN** to dry for 12-24 hours, according to the surrounding temperature. Before spreading the **DYNASTONE COLOR/MAPEFLOOR I 910** mix on the surface remove excess sand with a vacuum cleaner.

• Preparation and application of the DYNASTONE COLOR/MAPEFLOOR I 910 mix

Apply a coat of **MAPEFLOOR I 910** (two-component epoxy binder) on the primed substrate with a short-haired roller to promote adhesion, while preparing a mix made from **MAPEFLOOR I 910** and **DYNASTONE COLOR** aggregates at a ratio of 1:20 in a concrete mixer. Blend the components together for a few minutes and pour the mix onto the surface just after applying the **MAPEFLOOR I 910** (spread on the mix while the **MAPEFLOOR I 910** is still fresh).

Compact the mix immediately after spreading with a flat trowel or a power trowel.

Leave it to harden for at least 24 hours (at 20-23°C). Lower temperatures lead to longer hardening times.

• Preparation and application of the ULTRATOP mix

Pour a 25 kg sack of **ULTRATOP** into a container with 5.0÷5.5 litres of clean water while mixing and keep mixing with a low-speed electric mixer to form a smooth, lump-free, self-levelling blend. Let it stand for 2-3 minutes and mix the blend again before application. Only prepare quantities of **ULTRATOP** which may be applied within 15 minutes at +23°C. The workability time varies according to the surrounding temperature and reduces as the temperature increases.

If larger quantities of the product are required for medium to large surfaces, we recommend mixing the product in a vertical mixer.

When preparing the product in a mixer, the amount of water required for blending the product is the same

as for manual mixing. Keep mixing the product until it is completely blended before spreading it on the surface. Spread the fresh **ULTRATOP** mix on the surface of the hardened **DYNASTONE COLOR**, making sure that all the gaps between the aggregates are completely filled. Use a rubber trowel or spreader to help the mortar penetrate into the gaps around the **DYNASTONE COLOR**.

N.B. When applying the product, follow the pattern of the expansion joints in the substrate. On particularly large surfaces, form distribution joints at least every 50 m², which must be reduced to 25-30 m² on heated floors. Seal the joints with **MAPEFLEX PU45** single-component, thixotropic, quick-hardening polyurethane sealant and adhesive with a high modulus of elasticity for sealing expansion and distribution joints. Insert **MAPEFOAM** closed-cell polyethylene foam cord in the joint beforehand to obtain the required depth and avoid the sealant sticking to the bottom of the joint.

- **Polishing the floor**

2 days after applying the mix, the surface may be dry-polished using a polishing machine with diamond-tipped disks until a smooth, shiny reflective surface is formed. After the first "roughing" pass which exposes the surface porosity, clean the surface of the floor with a damp sponge and grout with **ULTRATOP STUCCO** in the same colour as **ULTRATOP**. Wait until **ULTRATOP STUCCO** is completely dry (approximately 24 hours) before carrying out the final polishing cycle with special polishing equipment.

- **Finishing coat**

The finishing treatment is carried out by using a wax mop to apply two coats of **MAPEFLOOR FINISH 630**, protective



Preparing the mix of Dynastone Color + Mapefloor I 910

transparent finish coat which reduces the absorption of the floor. In order to make routine cleaning and maintenance operations easier, we recommend applying an even coat of **MAPELUX OPACA** or **MAPELUX LUCIDA** special metal-filled, double-reticulation, high-strength wax over the entire surface of the floor.

5. Hardening and step-on times

The coating made from **ULTRATOP** and **DYNASTONE COLOR** is ready for use after carrying out the dry polishing treatment, approximately 2 days after applying **ULTRATOP** in normal climatic conditions (+23°C - 50% R.H.). Lower temperatures lead to longer hardening and step-on times.



Dry polishing the flooring

CLEANING AND MAINTENANCE

Regular cleaning and maintenance operations increase the life of the treated floor, improves its appearance and reduces its capacity to collect dirt. Floors created using **ULTRATOP SYSTEM "terrazzo alla veneziana effect"** are generally easy to wash with neutral detergents, or with alkali detergents diluted at a concentration of from 5 to 10% in water.

MAPEFLOOR MAINTENANCE KIT is available for maintenance operations, and includes **MAPELUX LUCIDA** metal-filled wax, **MAPEFLOOR WAX REMOVER** and **MAPEFLOOR CLEANER ED** detergent for daily cleaning operations.

NOTE

Recommendations regarding safe handling of the products are contained in the Safety Data Sheet for each single component in the cycle. However, the use of protective gloves and goggles is recommended when mixing and applying the products.

If the cycle is applied on different surfaces to those mentioned above, or in climatic conditions and/or final uses not mentioned above, please contact the Technical Assistance Department at MAPEI S.p.A.



Application of Ultratop on the hardened surface of Dynastone Color



