



SMART Washroom

Redefining Washroom Innovation

dolphinsolutions.co.uk



SMART Washroom

More than just improving the washroom experience, Dolphin's SMART washroom is about redefining innovation in design, function, and performance, whilst keeping the highest sustainability standards in mind. More than just a practical and sensible investment in SMART products and the future of the washroom, it's an investment into your staff by emphasizing innovation to cultivate engagement, care, and agility in a beautifully diverse company culture. And more than just helping building owners and managers to work in line with best practices, the SMART washroom empowers your business to demonstrate sustainability with its monitoring functions, encouraging changes in processes and behaviours, such as optimising water and energy usage and saving. With sensor taps, urinal flush sensors, WC flush plates, touch-free soap dispensers, the ALAVO washwall system, no washroom can be any smarter than that.

- > Sensor Taps
- > ALAVO



ALAVO

Modular Mirror WashWall system, including sensor taps and soap dispensers, hand dryers or paper towels, LED lighting, both for new installations and for renovations.

- Designed for both new installations and for renovations.
- Integrated SMART technology to monitor activations, water usage and hygiene flushing for minimizing Legionnaire's disease risk. Enables predictive maintenance with alarm and tasks showing on visual dashboard. See example over page.
- Soap reservoir refill notification to prompt soap replenishment and paper towel refills.
- Bluetooth interface for straightforward control of settings and service functions via smartphone app and integration with IoT systems.



Sensor Taps

- > Mains powered sensor taps, both for new installations and for renovations.
- > Outstanding monitoring of activations, water usage and water temperature readings for minimizing Legionnaires disease risk.
- > Customised settings and operating modes incl. intelligent water saving function.
- > Bluetooth interface for straightforward control of settings and service functions via smartphone app and integration with IoT systems.

THRU PANEL



**DOLPHIN
INFORM WALL
TAP**
DS111

> Complies with the following certifications; BREAM, SKA, LEED, WELL



**DOLPHIN
INFORM SLIM-
LINE WALL TAP**
DS113

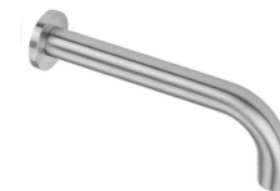
> Complies with the following certifications; BREAM, SKA, LEED, WELL



**DOLPHIN
INFORM WALL
TAP**
DS121

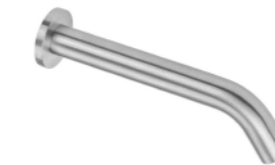
> Complies with the following certifications; BREAM, SKA, LEED, WELL

WALL PLATE



**DOLPHIN
INFORM WALL
TAP**
DS112

> Complies with the following certifications; BREAM, SKA, LEED, WELL



**DOLPHIN
INFORM SLIM-
LINE WALL TAP**
DS114

> Complies with the following certifications; BREAM, SKA, LEED, WELL



**DOLPHIN
INFORM WALL
TAP**
DS122

> Complies with the following certifications; BREAM, SKA, LEED, WELL

Sensor Taps

- > Mains powered sensor taps, both for new installations and for renovations.
- > Outstanding monitoring of activations, water usage and water temperature readings for minimizing Legionnaires disease risk.
- > Customised settings and operating modes incl. intelligent water saving function.
- > Bluetooth interface for straightforward control of settings and service functions via smartphone app and integration with IoT systems.

BASIN



**DOLPHIN
INFORM SLIM-
LINE BASIN TAP**
DS211

> Complies with the following certifications; BREAM, SKA, LEED, WELL



**DOLPHIN
INFORM BASIN
TAP**
DS221

> Complies with the following certifications; BREAM, SKA, LEED, WELL



**DOLPHIN
INFORM BASIN
TAP**
DS213

> Complies with the following certifications; BREAM, SKA, LEED, WELL



**DOLPHIN
INFORM BASIN
TAP**
DS223

> Complies with the following certifications; BREAM, SKA, LEED, WELL

How it works

What it does:

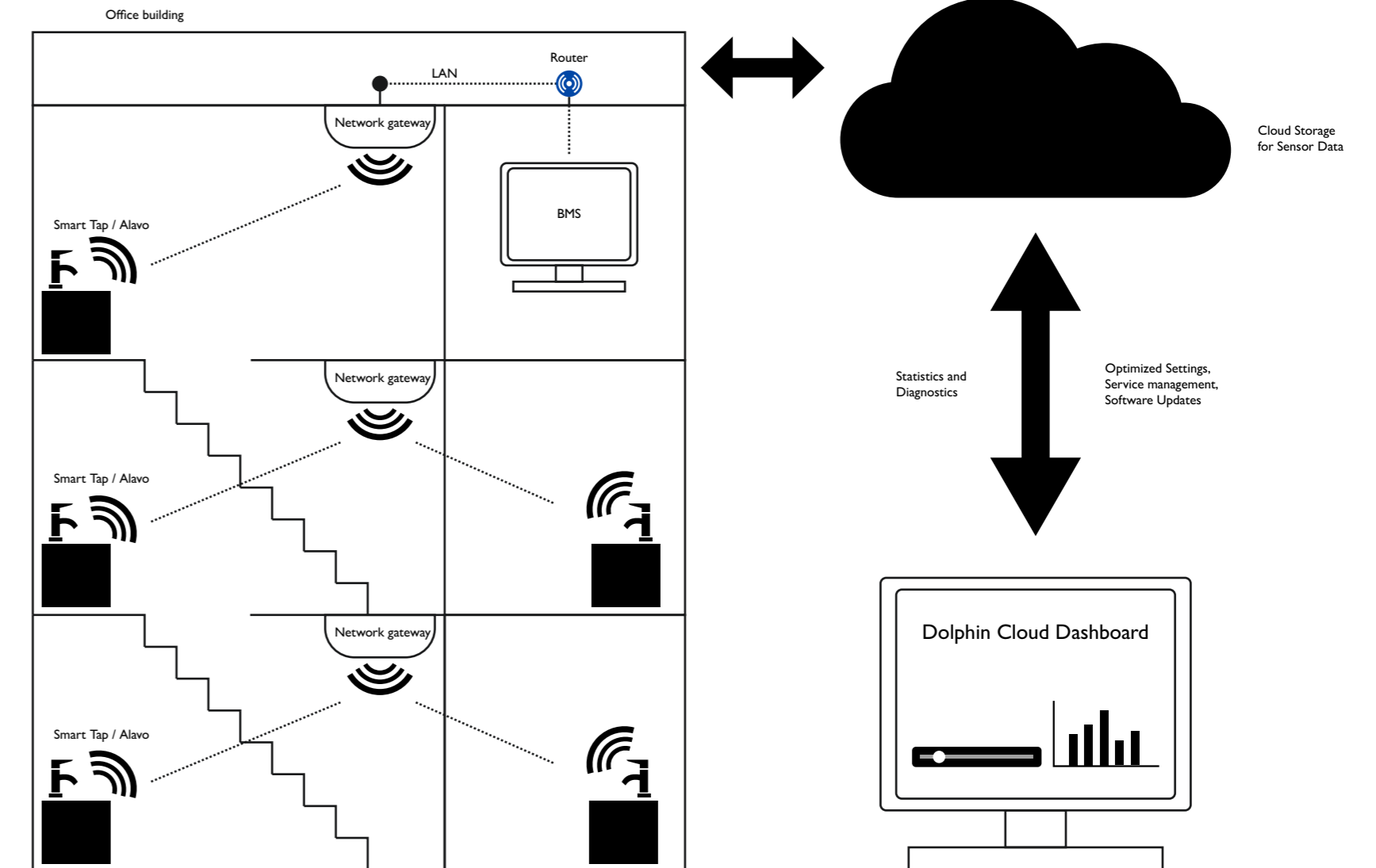
The Dolphin cloud provide access for your customers to the data of their installations with the following key aspects:

- > Statistics: provide access to the historical statistic data of an installation (usages, water consumption for a building / floor/ room / fitting, including distribution over time).

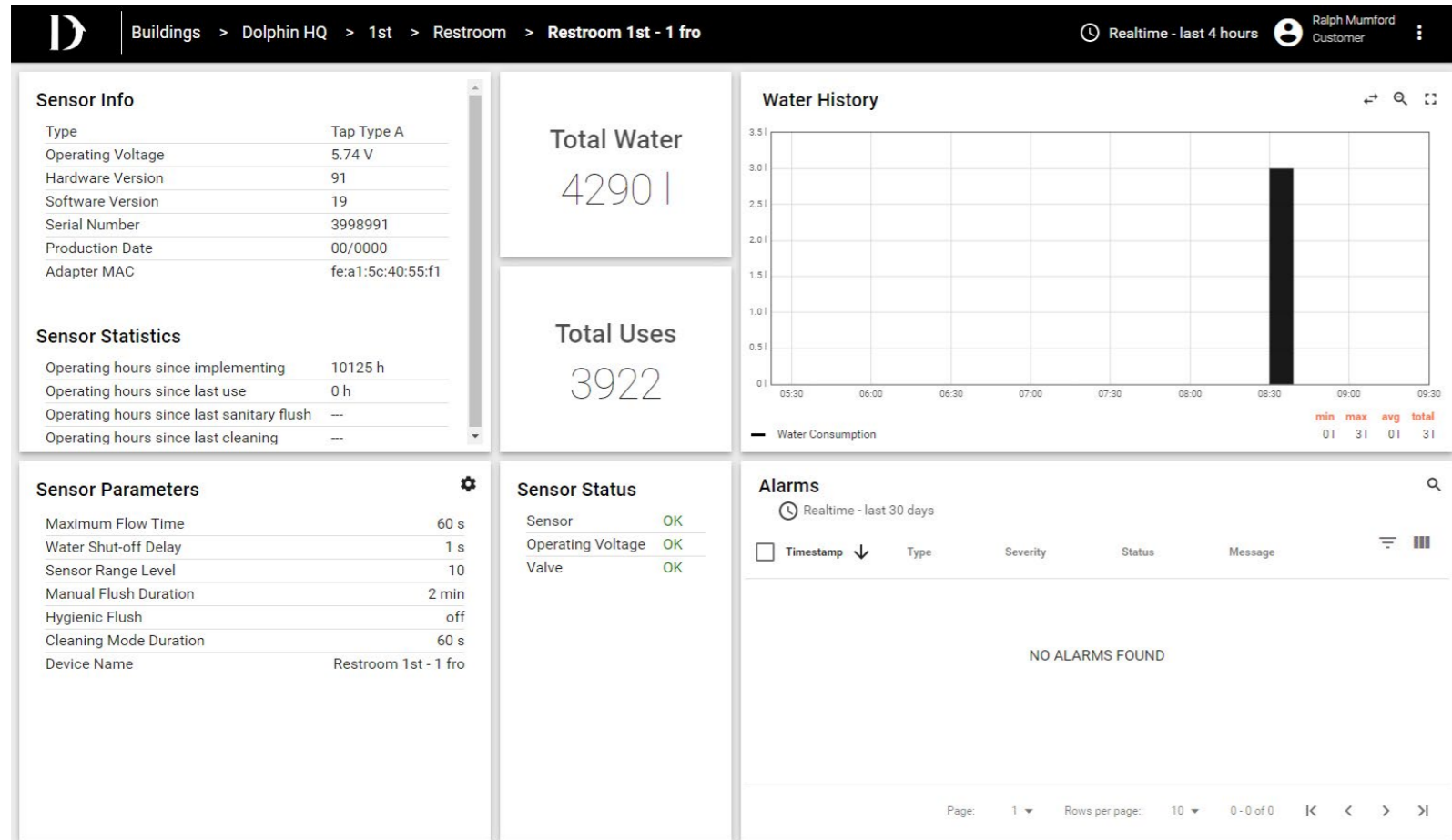
- > Diagnosis: provides access to all diagnostic data, finds defects.

- > Settings: provides access to sensor settings, change settings of fittings. The basic functionality of the Dolphin cloud is in line with the Dolphin App for the sensors, adding drill down and data aggregation on different level with grouping of sensors.

Dolphin Inform System Architecture:		
Device	Description	Interfaces
Sensor	Sensor products for sanitary or water management applications e.g. taps, WCs, urinals	> Bluetooth 4 LE p2p
Gateway	Network gateway as an interface from sensor products (Bluetooth) to the local network (MQTT)	> Bluetooth > Ethernet / MQTT
Dolphin Cloud	Cloud solutions, storing data from sensor products and providing dashboards with statistic, analytics etc.	> MQTT (to sensors / gateways) > http or https (to clients)



Dolphin Cloud Dashboard



Our Story

Let's start with the obvious reason for making us your go-to supplier of all things washroom-related: the exceptional quality and immense breadth of our product range. We've got it all. From dispensers to hot air dryers, taps and bins to baby change units, every item we sell is intelligently designed, not just to look good but to be truly fit-for-purpose.

And then there's our proven expertise. We've been working with architects, contractors and developers to create beautiful, high performance commercial washrooms for nearly 20 years; and we couldn't be more proud of what we have achieved together.

From the Shard to the Royal Shakespeare Theatre, Sydney Airport to St Pancras International, Wimbledon to Wells Cathedral, you'll find Dolphin washrooms – looking great, and performing brilliantly – in an incredible range of prestigious settings around the globe.

First established in South Africa over 30 years ago, Dolphin now has offices in the UK, France and Australia, and distributors worldwide. Recent acquisitions of businesses within the washroom sector has seen Dolphin grow, around the globe.

Sustainability & Certification

We are committed to our products having minimum impact upon the global environment and considering a building's users' wellbeing. To that end, we fully support clients and projects which look to obtain and achieve sustainable building standards including BREEAM, WELL, SKA and LEED.

Dolphin products can contribute to water and energy efficiency, noise reduction, sanitation and hygiene credits across the applicable sustainability certifications. Our team of washroom experts are able to advise on the key credits/areas that can be achieved or count towards certifications in relation to specifying or installing our products within a building. We are always happy to come and discuss your unique project sustainability and building performance considerations.



BREEAM

Dolphin Solutions' products support efficient water consumption and therefore the potential water savings by meeting the defined flow rates of BREEAM which reflect the highest performance levels set out in the standard (4/5).



WELL

Washrooms are featured in a number of the WELL concepts including Air, Water, Nourishment and Community. Dolphin Solutions' products contribute to WELL's scoring with hygiene being a focus for almost all of our products and our expertise in accessibility allowing for inclusive and compliant design.



LEED

LEED's 'efficiency first' approach to water and energy consumption to building defines criteria which Dolphin's products conform to as standard. Our products contribute to points across the categories for Water Efficiency and Energy and Atmosphere.



Copyright © 2021 Dolphin Solutions Ltd., All rights reserved.

Our mailing address is:
Dolphin Solutions Ltd, Southpoint, Compass Park,
Bodiam, Robertsbridge, TN32 5BS

