

Mount Options



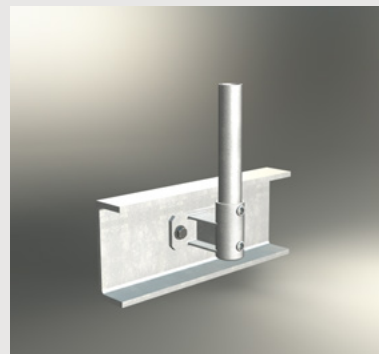
T2 - Top Mount (2 Fixings)

Concrete - using M12 x 100mm galvanized screwbolts
Steel - using M16 hi-tensile galvanized bolts



F2 - Face Mount (2 Fixings)

Concrete - using M12 x 100mm galvanized screwbolts
Steel - using M16 hi-tensile galvanized bolts



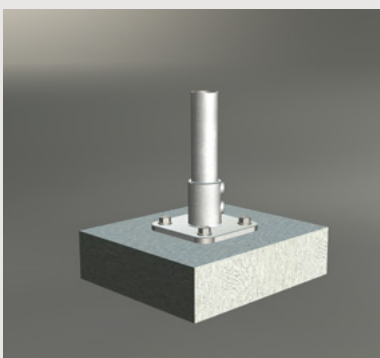
C11 - Channel Mount (2 Fixings)

110 mm Offset
Steel - using M16 hi-tensile galvanized bolts



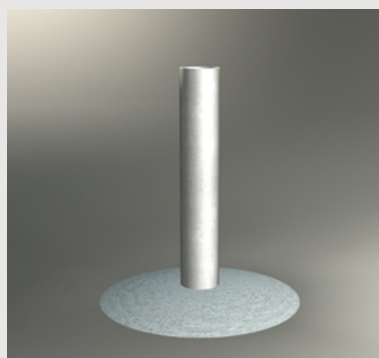
C13 - Channel Mount (2 Fixings)

130 mm Offset
Steel - using M16 hi-tensile galvanized bolts



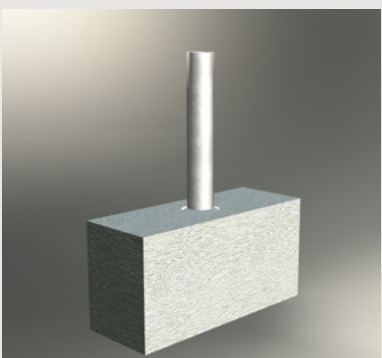
T4 - Top Mount (4 Fixings)

Concrete - using M12 x 100mm galvanized screwbolts
Steel - using M16 hi-tensile galvanized bolts



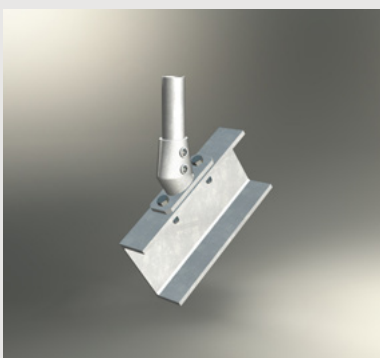
GD - Inground Mount

As per engineers' specifications



CD - Cored Mount

As per engineers' specifications



AM - Angle Mount (2 Fixings)

Concrete - using M12 x 100mm galvanized screwbolts
Steel - using M16 hi-tensile galvanized bolts



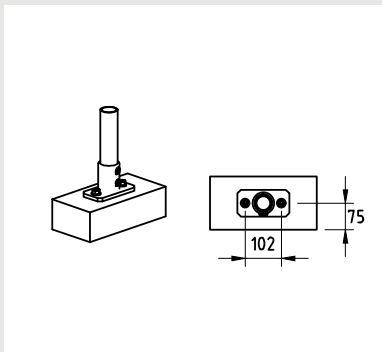
CY - Conveyor Mount (2 Fixings)

Steel - using M16 hi-tensile galvanized bolts

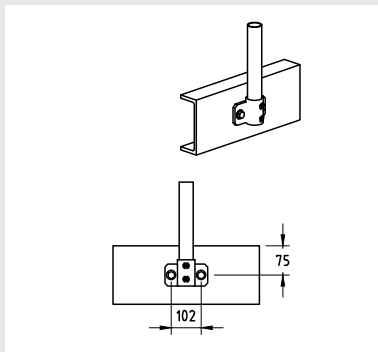
IMPORTANT

Fixing type, size & number per mount are recommendations only. Consequent selection & use remains the specifier and/or installer's responsibility, taking into account the intended application, load ratings & actual conditions on the particular site. Refer manufacturer's recommendations & specifications, user manuals and engineers' specifications /recommendations.

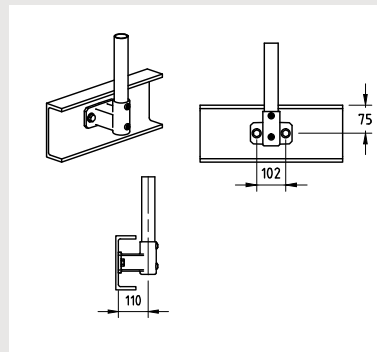
Mount Dimensions



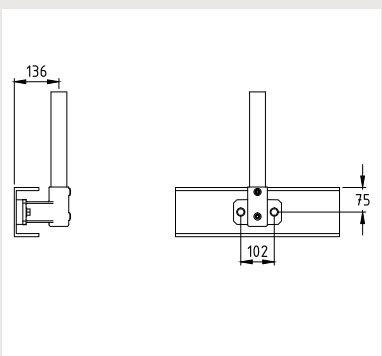
T2 - Top Mount (2 Fixings)



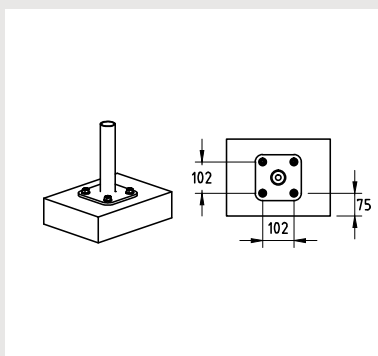
F2 - Face Mount (2 Fixings)



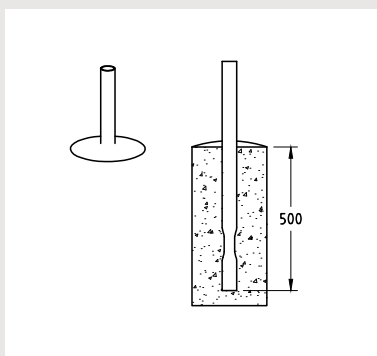
C11 - Channel Mount (2 Fixings)



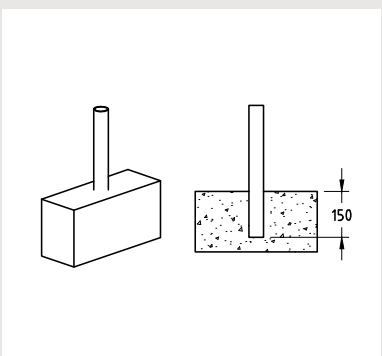
C13 - Channel Mount (2 Fixings)



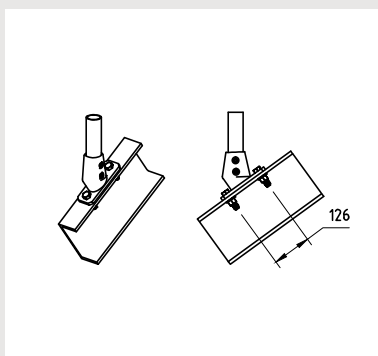
T4 - Top Mount (4 Fixings)



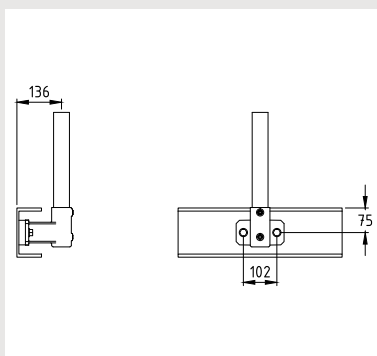
GD - Inground Mount



CD - Cored Mount



AM - Angle Mount (2 Fixings)



CY - Conveyor Mount (2 Fixings)

IMPORTANT

Fixing type, size & number per mount are recommendations only. Consequent selection & use remains the specifier's and/or installer's responsibility, taking into account the intended application, load ratings & actual conditions on the particular site. Refer manufacturer's recommendations & specifications, user manuals and engineers' specifications/recommendations.