



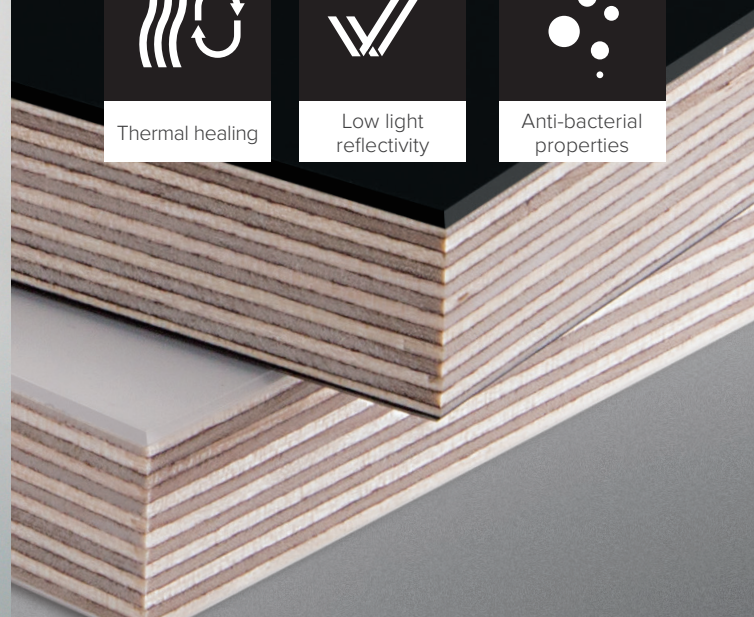
Thermal healing



Low light reflectivity



Anti-bacterial properties



**plytech**  
CREATIVE STRENGTH

**POLARIS**  
Innovative matt material

**Its surface features are truly extraordinary.**

**Polaris HPL**

European Birch finished with the revolutionary Polaris HPL (high pressure laminate).

**SIZE:**

3000 x 1250mm

**THICKNESSES:**

18, 24mm

**COLOURS:**

Matt black, Matt white



Anti-fingerprint



Scratch resistant



Heat resistant

**Innovative matt material for interior design.**

**TECHNICAL SPECIFICATIONS:**

Standard – EN 636-2

Finish – High Pressure Laminate 1mm

Wood Raw Material – European Birch

Density – average 700kg/m<sup>3</sup>

Class – Hardwood, non-durable

Glue Bond – EN 314-3: Class 2 Exterior

Glue Formaldehyde Emissions – ULEF:

Ultra-Low Emitting Formaldehyde.

**ENVIRONMENT:**

Environment Protection Standard: ISO 14001:2005

Quality Management Standard: ISO 9001:2009

ULEF: No harmful emissions

FSC Certified

PEFC Certified.

**HANDLING AND STORAGE:**

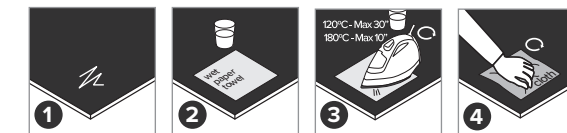
Plywood is a natural product that can be affected by changes in ambient weather conditions, causing previously flat sheets to bow or twist. All precautions are taken to minimise this effect, however once the plywood has left our warehouse we cannot guarantee sheets to remain flat. This is particularly important where free standing kitchen/cabinet doors are concerned.

**CLEANING & MAINTENANCE:**

Just use a damp cloth with warm water or mild detergents. When needed, it is suggested to use a melamine (magic) sponge for cleaning the surface.

In case of micro scratches, please refer to the specific surface thermal healing instructions.

**THERMAL HEALING INSTRUCTIONS:**



1. Superficial defects caused by micro-scratches
2. Place a dampened kitchen roll sheet on the area where the micro-scratches can be seen
3. Position the heated iron onto the surface that needs to be repaired. Do not leave the iron on the part of the surface for more than 10 seconds
4. Rinse the repaired area with lukewarm water and microfibre cloth

The surface should now be healed.

**General precautions:** Polaris must never be treated with products containing abrasive substances, such as sandpaper or steel wool. Products with high acid or very alkaline content should be avoided. Avoid furniture polishes and wax based cleaners, because they tend to form a sticky layer to which the dirt adheres.